

Vanleigh **RV**
— LET THE JOURNEY BE YOUR HOME —



2017 VILANO



LEFT TO RIGHT
Van, Bob and Leigh Tiffin

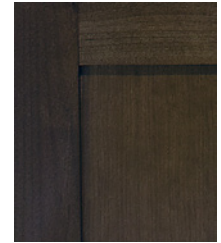
We understand that you have many options to consider when purchasing a new RV and we thank you for taking the time to consider ours. Our family has been in the RV manufacturing industry for over 40 years. The Vanleigh team gets to work well before dawn every morning with one goal in mind, to create the best built product in the marketplace. We believe in building a product that we would want to RV in, whether it's for a weekend getaway or a year-long hiatus. That's why every Vanleigh RV is made knowing that our customer's journey is their home.



Vilano 365RL | galley slide with ceiling fan option |



2017 VILANO Solid Wood Cabinetry



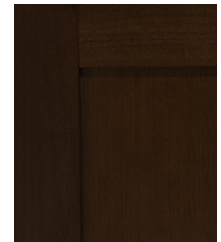
Mocha



English
Chestnut



Amber
Glaze



Cordovan
Glaze

cordovan glaze wood cabinetry

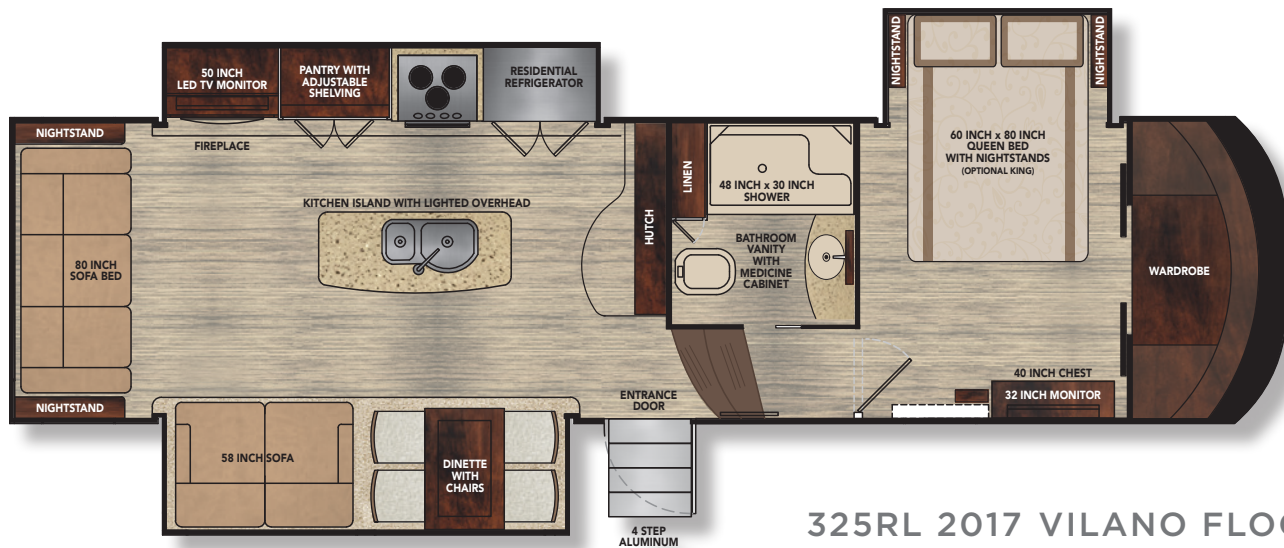
2017 VILANO



amber glaze wood cabinetry | pebble furniture | ceiling fan and solar shade options



amber glaze wood cabinetry



325RL 2017 VILANO FLOORPLAN



english chestnut wood cabinetry



amber glaze wood cabinetry

2017 VILANO 325RL

GVWR 16,000

Dry Weight 12,500*

Cargo Carrying 3,500

Width 101"

Height 12' 11" **

Length 34' 7" ***

Fresh Water Cap. 54 gal

Grey Water Cap. 48 gal

Black Water Cap. 45 gal

Water Heater 10 gal

Furnace 42K BTU

LP Cap. 60 lbs

Hitch Weight 2,700****

- * unloaded and based off of an average
- ** to top of A/Cs
- *** from pinbox to rear ladder
based on standard build, no options
- **** unloaded and based off of an average



cordovan glaze wood cabinetry



amber glaze wood cabinetry



325RL 2017 VILANO





english chestnut wood cabinetry

2017 VILANO 365RL

GVWR 16,000

Dry Weight 13,100*

Cargo Carrying 2,900

Width 101"

Height 12' 11" **

Length 38' 11" ***

Fresh Water Cap. 54 gal

Grey Water Cap. 90 gal

Black Water Cap. 45 gal

Water Heater 10 gal

Furnace 42K BTU

LP Cap. 60 lbs

Hitch Weight 2,800****

* unloaded and based off of an average

** to top of A/Cs

*** from pinbox to rear ladder
based on standard build, no options

**** unloaded and based off of an average



mocha wood cabinetry



mocha wood cabinetry | ceiling fan option

365RL 2017 VILANO

2017 Vilano Features

LIVING AREA

- Full Profile Ceiling Throughout
- Full Overlay Hardwood Cabinetry and Faceframes
- Hardwood Slide-Out Fascia Throughout
- Hardwood Window Valances Throughout
- 8'0" Main Floor Slideout Boxes
- Multiplex Wiring System w/ Digital Homescreen
- Soft Touch Padded Vinyl Ceiling Throughout
- Recessed LED Ceiling Lighting Throughout
- Roller Shades (Night)
- Dimming Function on Living and Bedroom Area Lighting
- High Quality Furniture Made in the U.S.A.

KITCHEN

- Solid Surface Kitchen Countertops
- Solid Surface Sink and Range Covers
- Residential Kitchen Faucet with Pull Down
- Stainless Steel Microwave and Oven
- Sealed Burner Range
- 18 Cu Ft. Samsung French Door Refrigerator
- 1,000 Watt Pure Sine Wave Inverter
- Stainless Drawer Guides
- Hardwood Dinette Table and Chairs
- Legless Dinette Table
- Oversized 70/30 Stainless Steel Sink
- Galley Area Air Automatic Ceiling Vent
- Hardwood Ceiling Décor Package with Recessed LED Lighting
- Oversized Pantry with Motion Sensored Lighting
- Tile Backsplashes
- Residential Kitchen Faucet with Pull-Down Sprayer

HOME ENTERTAINMENT

- 50" LED TV in Living Area
- 5100K BTU Residential Fireplace
- Sound Bar with Surround Sound in Living Area
- Entertainment Center with Bluetooth, DVD, Aux Controls
- Exterior Speakers
- 32" LED Bedroom TV
- PreWire for Solar Panels
- King Jack Digital Antennae

BEDROOM

- Memory Foam King Mattress
- Dual USB Ports in Nightstands
- Backlit Handrail to Bedroom
- Solid Vinyl Flooring Throughout Bedroom
- Hardwood Window Valances

- Residential Hardwood Headboard
- Hardwood Six-Drawer Dresser
- Full Sized Wardrobe with Motion Sensored Lighting
- Side-by-Side Washer Dryer Prep
- Full-Sized Underbed Storage Area

HEATING AND COOLING

- Dual Low-Pro 15K BTU A/Cs Standard
- Prewire for Third 15K BTU A/C with Triple Zone Thermostat
- 42K BTU Furnace
- 5K BTU Electric Fireplace
- R-45 Floor and Roof Insulation
- R-11 Sidewall Insulation
- Whisper Quiet A/C System
- Fully Enclosed and Heated Underbelly with Heat Return
- 12V Electric Tank Heaters
- 10 Gallon Gas/Electric Hot Water Heater
- 16" Wide Return A/C Ducts for Max Airflow

EXTERIOR AND CONSTRUCTION

- Noble T60 High Gloss Fiberglass Exterior
- Tubular Aluminum Framed Sidewalls
- 12V Electric Dump Gates for Black and Gray Tank with Manual Override
- 16" on Center Tubular Aluminum Floor
- 16" on Center Aluminum Roof Joists
- Framed, Laminated, and Insulated Slide Box Floors and Ceilings
- Laminated Slide Box End Walls
- Aluminum A/C Boxes Welded to Frame
- Roof Backer For All Crown Molding
- Tubular Aluminum Upper Support Wall

- Dual Copper Water Manifolds
- Powdercoated Aluminum Wet-Bay
- Labeled Wire Harnesses
- Protective Wire Looms
- LED Exterior Lighting System
- Pre-Wire for Backup Camera
- Slam-Latch Baggage Doors
- Motion Sensored Lighting in Pass Thru Compartment

OPTIONAL EQUIPMENT

- Goodyear "G" Rated Tires
- Disc Brakes
- Generator Prep
- Pre Wire for Traveler Satellite
- Dirt Devil Central Vac System
- Residential Dishwasher (365RL Only)
- 3rd 15K BTU Low Profile A/C
- Second Awning Mounted to Slidebox
- Dual Pane Windows
- Convection Microwave
- Programmable Combination Safe
- Ceiling Fan
- Solar Shades (Day Shades)
- Flexair Pinbox
- Electric Power Cord Reel
- Queen Bed (325RL Floorplan)

Some interior furnishings not included. Some photos shown in literature have optional equipment. All options may not be available in every model. Because of progressive improvements, specifications, standard and optional equipment are subject to change without notice or obligation. For a complete and up-to-date list of available options and specifications, as well as Vanleigh's full line of RVs, visit vanleighrv.com.

YOUR LOCAL VANLEIGH RV DEALER:

Colton RV
North Tonawanda, NY 14120
(716) 694-0188
(800) 628-4889
www.ColtonRV.com



26 Industrial Drive | Burnsville, MS 38833
Phone 662-612-4040 | Fax 662-655-0913

customercare@vanleighrv.com

www.vanleighrv.com