

November 2009

HORNET

by Keystone

HIDEOUT

by Keystone



HORNET HIDEOUT

www.keystone-hornet.com
www.keystone-hideout.com

“Defining Its Class”



Shown above, the 30RKDS is a camper's dream. Rich wood tones, inviting decors and well designed layouts enhance your camping experience. Upgraded features like the full size air hide-a-bed sofa and 26" LCD TV are items our customers have come to expect.

www.keystone-horner.com



Your walk-a-round queen size bed comes with a headboard, bedspread, storage underneath and with an upgraded Evergreen Sleep System Mattress. In the 30RKDS you get an extra full sized wardrobe and drawers in our unique wardrobe slide-out design.

Decors



Saddlebrook



Brookstone

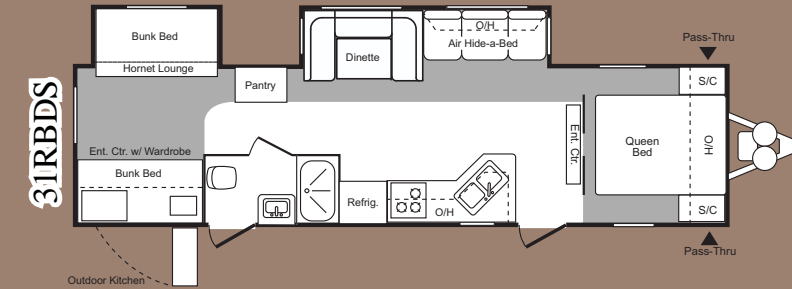
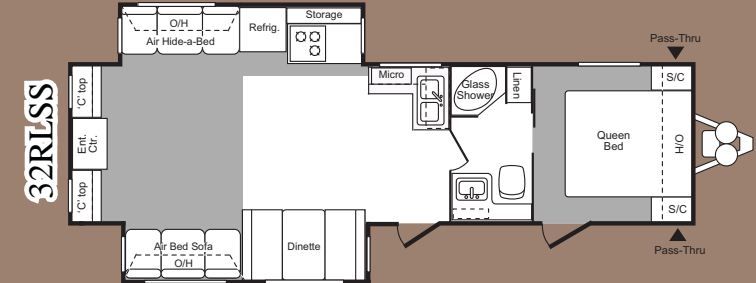
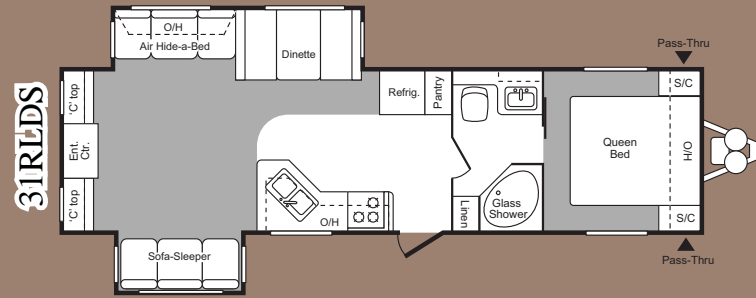
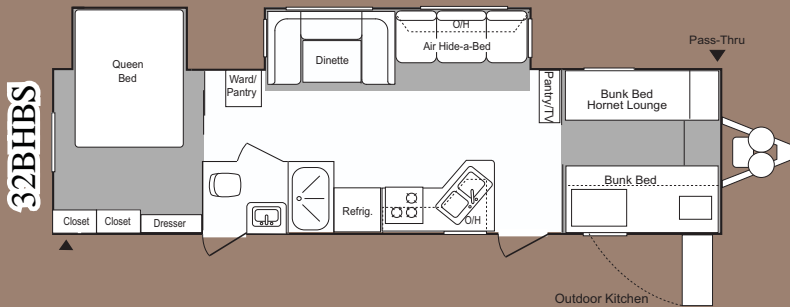
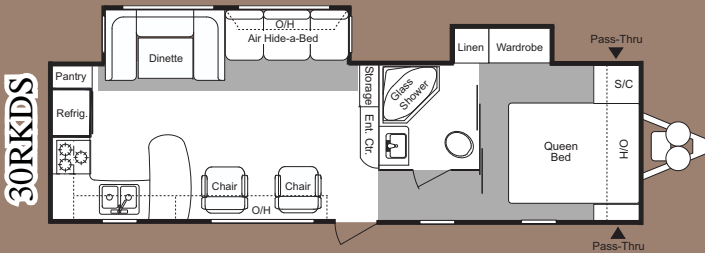
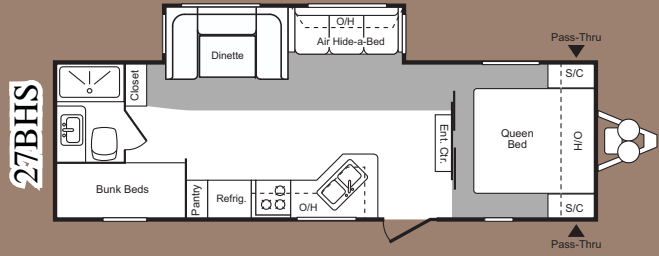
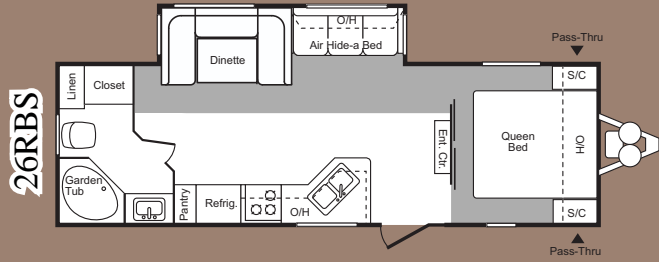


Black Star



Your Hornet kitchen has more storage space than most competitors. Our 7' (84") ceilings allow us to maximize our overhead storage space. Our matching appliances coordinate beautifully in our elegant kitchen. Waste paper basket storage, large kitchen sink with hi-rise faucet, sink cover, multiple drawers with metal guides, raised panel hardwood cabinet doors, wood core (Not Fiberboard) cabinet framing and large pantry are all features you expect in your new home away from home. The 30RKDS kitchen shown here has a huge peninsula counter top that provides abundant preparation area, as well as loads of extra storage. Your Hornet kitchen comes complete with standard microwave, oven, 3 burner range, and two door refrigerator with five control settings. With your 30RKDS panoramic living room windows, you will enjoy the beauty of your surroundings.

Hornet Floor Plans



ITEM	26RBS	27BHS	28RLS	30RKDS	31RBDS	31RLDS	32BHBS	32RLSS
Shipping Weight	6494	6526	6930	7355	7775	7615	TBD	7894
Carrying Capacity	2991	3064	2800	2445	1935	1930	TBD	1951
Hitch	685	790	930	790	910	940	TBD	1045
Exterior Length	29' 10"	30' 3"	31' 11"	33'	35' 5"	34' 1"	TBD	34' 7"
Exterior Width	8'	8'	8'	8'	8'	8'	TBD	8'
Ext Height - Top of A/C	11' 5"	11' 5"	11' 5"	"11' 5"	11' 5"	11' 5"	TBD	11' 5"
Fresh Water Capacity	45	45	45	45	45	45	TBD	45
Waste Water Capacity	38	32	38	38	38	38	TBD	38
Grey Water Capacity	70	38	38	76	38	76	TBD	38
LPG Capacity (lb.)	60	60	60	60	60	60	TBD	60
Tire Size	225/75R 15D	225/75R 15D	225/75R 15D	225/75R 15D	225/75R 15D	225/75R 15D	TBD	225/75R 15D
Awning Length	16'	16'	21'	18'	21'	18'	TBD	12'

www.keystone-hornet.com

Hornet Features

Exterior

- ★ Walk on Roof
- ★ Electric Awning
- ★ Filon Front Cap
 - Ladder Backers
 - Powder Coated I-Beam Frame
 - Cambered Chassis
 - Enclosed A-Frame
 - Four Heavy Duty Stab Jacks
- ★ EZ Trax™ Suspension System
- ★ Aluminum Rims
 - Easy Lube Axles
 - Full Length Outriggers
 - Dual Battery Rack
 - Two 30lbs Bottles with Cover and Auto Change Over
 - Awning-Color Coordinated
 - Heated and Enclosed Fresh Water
 - Fender Skirts
 - Diamond Plate
 - Exterior Speakers
 - Black Radius Window Frames
 - TV Antenna with Booster
 - Radio Antenna
 - Roof Vents
 - Cable Hook Up
 - GFI Electrical Outlets
 - Seamless One Piece Roof
 - Radius Skirting
 - Pass Thru Storage (Queen Bed)
 - Hose Storage in the Bumper
 - .024 Gauge Aluminum Siding
 - R-7 Insulation throughout
 - Rain Gutters with Down Spouts
 - Four Stage Slide Room Seals
 - Roto-Cast Seamless Holding Tanks

★ Defining Its Class

All Features Not Available on all Models.

Interior

- ★ 26" LCD TV
 - 13'500 BTU Air Conditioner
 - True Sound Entertainment System (with AM/FM, CD, DVD, MP3 Jack)
 - Foam Core Insulated A/C Ducts
 - Wall Paper Border
- ★ 72" Slide Ceiling Height
 - 30K BTU Furnace
 - 6 Gallon Gas / Electric DSI Quick Recovery Water
 - Heater with By-Pass Kit
 - Flex Pex Tubing w/10 Year Warranty
- ★ 84" Interior Height
 - Wall switches for the Lights
 - RG6 Cable and Satellite
 - Sculptured Valances with Lambrequins
 - Panoramic Dinette Window
 - Deep Slide Room Cabinets
 - Shirt Closets
- ★ 60 x 80 Air Mattress Hide-A-Bed Sofa

Bed Room

- TV Hook Up
- Bedsprad-Master Bedroom
- Bed Storage with Air Shocks
- Four Cabinets Above the Queen Bed
- Reading Light

Bath

- ★ Porcelain Toilet w/Foot Flush
 - Tub Surround
 - Shower Exhaust Fan
 - Large Medicine Cabinet
 - Robe and Towel Hooks

Kitchen

- 12 Volt Shur Flo™ Water Pump
- Three Drawers
- Silverware Divider
- Holding Tank Monitor Panel - Oven
- Range with Hi-Output Burner
- 6 cu ft Refrigerator (5 Settings)
- Exhaust Fan with Light
- Microwave
- Reversible Dinette Cushions
- Largest Residential Kitchen Sink
- High Rise Kitchen Faucet
- Waste Basket Storage
- ★ Wood Core Cabinet Stiles (Pre-Drilled and Hand Screwed)
 - Mortise and Tenon Door Joints
 - Raised Panel Upper Cabinet Doors
 - Overhead Cabinets Above the Sink
 - Sink Cover
 - Metal Drawer Guides
 - Counter top Extensions

Construction

- Aggressive Front Profile
- Darco Wrapped Floor Secured on the Top of the Floor
- ★ 5/8" Seamless Sub-Floor
- ★ Sub-Floor Limited Lifetime Warranty
 - 2" Wall Studs 16" on Center
 - LVL Beam Over the Slide Rooms
 - 2" x 6" Framing Around the Slide Room
 - 4-1/2" Crowned Roof
 - Truss Cleats on Both Sides
 - Double Trussed at Openings
 - Hurricane Straps Throughout
 - Loomed Wiring
 - Radius Corner Blocks
 - Radius Storage Doors

Safety

- Safety Chains
- Break Away Switch
- Electric Brakes on all Wheels
- Carbon Monoxide Detector
- L.P. Detector
- Smoke Detector
- Fire Extinguisher
- GFI Electrical Outlets
- Tinted Safety Glass
- Radial Tires
- ★ EZ Trax™ Suspension System
 - Extended Grab Handle

Options

- Spare Tire Carrier, Cover
- Rear Ladder
- Two Swivel Rockers (31RLDS)
- Free Standing Dinette
- 15,000 BTU Air Conditioner



HORNET

www.keystone-hornet.com

HORNET

by Keystone

Hornet Features

- | | |
|-------------------------------------|-----------------------------------------------|
| 1. "One Piece" Rubber Roof | 12. 6 Gallon Gas / Electric DSI Water Heater |
| 2. 3/8" OSB Roof Decking | 13. Easy Lube Axles |
| 3. R7 Insulation | 14. "Four Point" Stabilizer Jacks |
| 4. Hurricane Straps | 15. R7 Insulation |
| 5. Hitch Light | 16. Black Framed, Tinted Safety Glass Windows |
| 6. Dual Battery Tray | 17. Rain Gutter with Down Spouts |
| 7. Twin 30# L.P. Bottles with Cover | 18. Exterior Speakers |
| 8. Pass Through Storage | 19. Color Matched Awning |
| 9. 5/8" Seamless Floor Decking | 20. 13,500 BTU Ducted Air Conditioner |
| 10. Residential Carpet | |
| 11. Easy Lift Steps | |

Roof Features

- | | |
|-------------------------|-------------------------------|
| - R7 Insulation | - Walk On Roof |
| - 3/8" OSB Roof Decking | - 4-1/2" Crowned Roof Decking |



- | | |
|--------------------------------------|---------------------------------------------|
| - Radius Roof Trusses w/ 16" Ducting | - Trusses are Cleated on Both Sides |
| - Double Trusses at Openings | - Foam Core Insulated Air Conditioner Ducts |



www.keystone-hornet.com

Frame and Floor Features

*Darco Underbelly is
Wrapped and Secured
Over the Top of the Floor*

*"Space Saver" Heated
and Enclosed Fresh
Water Tank*



*One Piece I-Beam
Powder Coated Frame*

*5/8" x 24' OSB Floor
Decking with a Limited
Lifetime Warranty*

*Full Width
Outriggers*

HIDEOUT

by Keystone

Hideout Features

1. "One Piece" Rubber Roof
2. .024" Baked Enamel Siding
3. Twin 20# L.P. Bottles
4. Dual Battery Tray
5. Residential Carpet
6. Hurricane Straps
7. 5/8" Seamless Floor Decking
8. Oversized Pass Through Storage
9. Window Corner Blocks
10. Easy Lift Steps
11. Easy Lube Axles
12. Bumper Sewer Hose Storage
13. Black Framed with Tinted Safety Glass Windows
14. Rain Gutter with Down Spouts
15. Exterior Speakers
16. 2" Studded Walls, 16" on Center
17. 13,500 BTU Ducted Air Conditioner
18. Color Matching Awning
19. R7 Insulation



This
Keystone RV
Rides On
Radial Tires
Meets or Exceeds All U.S.
Department of
Transportation (D.O.T.)
Safety Standards

www.keystone-hideout.com

Hideout Construction



Your Hideout's 7' ceilings, 6' slide room ceilings and large windows offer you plenty of room, storage and comfort. Full storage area under the sofa sleeper, or a or a storage drawer under the air mattress hide a bed option. Your overhead cabinets in the slide room are plenty deep enough for your full size dinner plates. Your bench cushions are reversible and easily lift for under the bench storage access. Storage above the huge rear window is bonus for those shopping sprees while traveling to your favorite destinations.

HIDEOUT

by Keystone

www.keystone-hideout.com



You have a lot of the comforts of home in your new Hideout's kitchen. Standard is your 3 burner range, exhaust fan with light, oven, largest sink in the industry with a high rise faucet, kitchen drawers with metal glides, microwave oven with carousel, warm color counter top, waste basket storage, pantry in most models, overhead storage and cabinets.

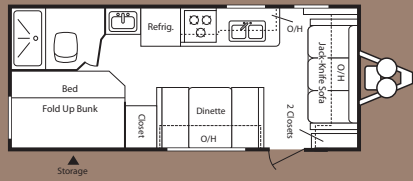


Your 30BHDS kids room will provide that extra eating space, play area, game room or huge sleeping quarters that every camper desires.

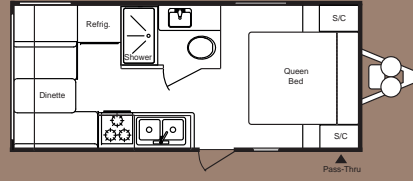


Your bedroom comes with lots of cabinet and hanging storage space. Air shocks under the bed provide easy access to yet more storage space under the bed.

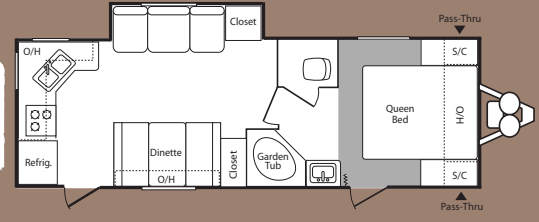
19FLB



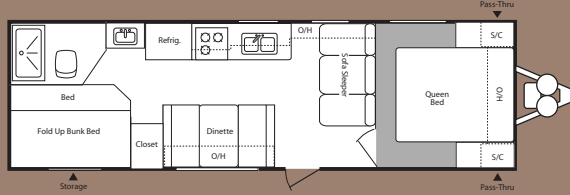
20RD



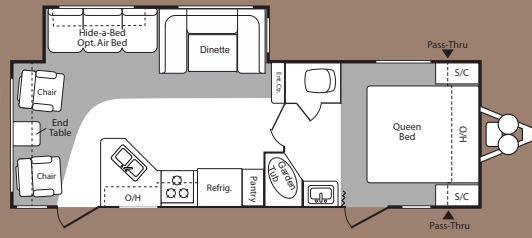
23RKS



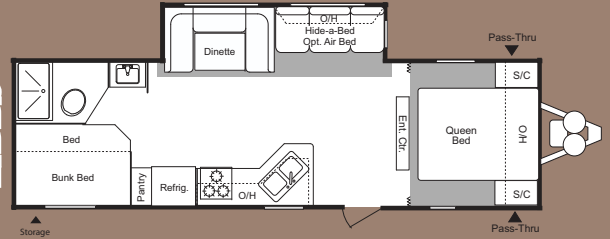
26B



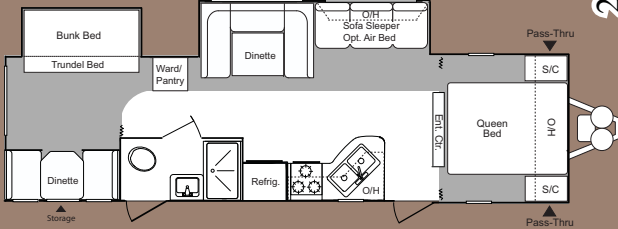
26RLS



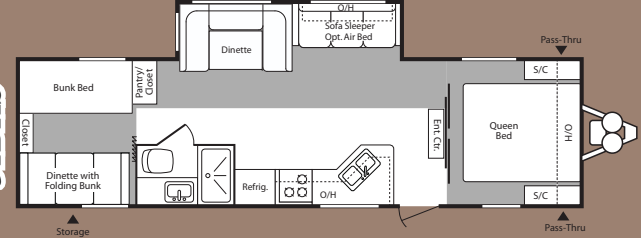
27DBS



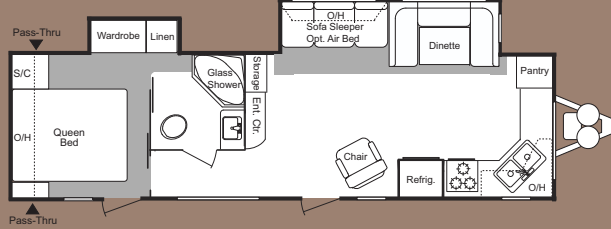
30BHDS



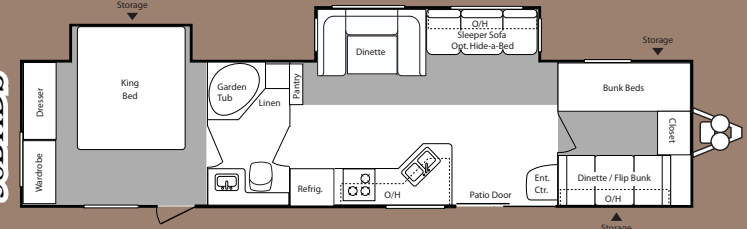
31BHS



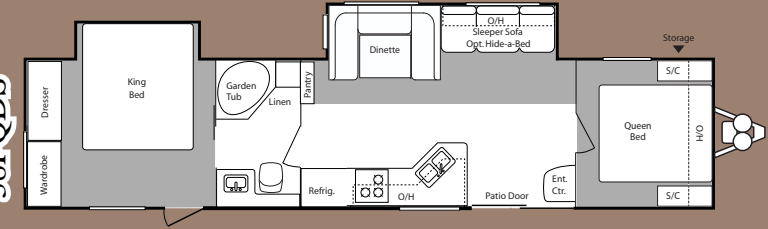
30FKDS



38BHDS



38FQDS



HIDEOUT

by Keystone

Specifications

ITEM	19FLB	20RD	23RKS	26B	26RLS	27DBS	30BHDS	30FKDS	31BHS	38BHDS	38FQDS
Shipping Weight	4165	TBD	5265	5142	5992	6425	7245	7285	6680	8249	8154
Carrying Capacity	2635	TBD	2160	2458	1708	1455	2400	2620	2895	2833	1861
Hitch	425	TBD	650	600	730	880	548	1105	775	1235	1215
Exterior Length	23'	TBD	28' 6"	29' 11"	29'	31' 10"	33' 11"	33' 2"	33' 9"	39' 10"	39' 10"
Exterior Width	8'	TBD	8'	8'	8'	8'	8'	8'	8'	8'	8'
Ext Height - Top of A/C	10' 6"	TBD	10' 6"	10' 6"	11' 3"	11' 3"	11' 3"	11' 5"	10' 10"	11' 5"	11' 5"
Fresh Water Capacity	45	TBD	45	45	45	45	45	45	45	45	45
Waste Water Capacity	32	TBD	38	32	38	32	38	38	38	38	38
Grey Water Capacity	38	TBD	64	38	38	38	38	76	38	38	38
LPG Capacity (lb.)	60	TBD	60	40	60	40	40	40	60	40	40
Tire Size	205/75R 14C	TBD	205/75R 14C	205/75R 14C	205/75R 15D	205/75R 14D	225/75R 15D	225/75R 15D	225/75R 15D	225/75R 15D	225/75R 15D
Awning Length	12'	TBD	21'	16'	16'	16'	21'	21'	16'	21'	21'

Hideout Features

Exterior

- Walk on Roof
- Ladder Backers (N/A 19FLB)
- Powder Coated I-Beam Frame
- Cambered Chassis
- Two Heavy Duty Stab Jacks
- Easy Lube Axles
- Full Length Outriggers
- Dual Battery Rack
- Two 20 lbs. L.P.. Bottles
- Awning-Color Coordinated
- Heated and Enclosed Fresh Water
- Fender Skirts
- Exterior Speakers
- Black Radius Window Frames
- TV Antenna with Booster
- Radio Antenna
- Roof Vents
- Cable Hook Up
- GFI Electrical Outlets
- Seamless One Piece Roof
- Radius Skirting
- Oversized Pass Thru Storage (Queen Bed)
- Hose Storage in the Bumper
- .024 Gauge Aluminum Siding
- R-7 Insulation throughout
- Rain Gutters with Down Spouts
- Four Stage Slide Room Seals
- Roto-Cast Seamless Holding Tanks

Interior

- 12 Volt 55 Amp Converter
- 13,500 BTU Ducted Air Conditioner
- True Sound Entertainment Center (AM/FM, CD, MP3 Jack)
- Foam Core Insulated A/C Ducts
- Wall Paper Border
- 30K BTU Furnace
- 6 Gallon DSI Quick Recovery Water Heater with By-Pass Kit
- Flex Pex Tubing w/10 Year Warranty
- 34" Interior Height
- 6' Ceilings in the Slide Rooms
- Wall switches for the Lights
- RG-6 Cable and Satellite
- Lumber core Cabinet Pre-Drilled and Screwed Stiles
- Decorative Window Treatments
- Panoramic Dinette Window
- Jack Knife Sofa-Standard
- Mini Blinds
- 11 3/4" Deep Slide Room Cabinets

Bath

- Porcelain Toilet w/Foot Flush
- Tub Surround
- Shower Exhaust Fan
- Large Medicine Cabinet

Bedroom

- TV Hook Up
- King Slide Bedroom (38BHDS Only)
- Bedsprad-Master Bedroom
- Bed Storage with Air Shocks
- Four Cabinets Above the Queen Bed
- Master Bed-Innerspring Mattress
- Reading Light

Safety

- Safety Chains
- Break Away Switch
- Electric Brakes on all Wheels
- Carbon Monoxide Detector
- L.P. Detector
- Smoke Detector
- Fire Extinguisher
- GFI Electrical Outlets
- Tinted Safety Glass
- Radial Tires

Kitchen

- 12 Volt Water Pump
- Drawers with Metal Guides
- Silverware Divider
- Holding Tank Monitor Panel
- Oven
- Range with Hi-Output Burner
- 6 cu. ft. Refrigerator with 5 Settings
- Microwave
- Reversible Dinette Cushions
- Largest Residential Kitchen Sink
- High Rise Kitchen Faucet
- Waste Basket Storage
- Wood Core Cabinet Stiles
- (Pre-Drilled and Hand Screwed)
- Mortise and Tenon Door Joints
- Overhead Cabinets Above the Sink

Options

- Exterior Shower
- Spare Tire Carrier
- Air Bed Sofa (N/A 19FLB, 20RD, 23RKS, 26B)
- Rear Ladder (N/A 19FLB)
- 15,000 BTU Air Conditioner
- Four Stabilizer Jacks
- Gas/Electric DSI water heater
- Residential refer (38BHDS Only)
- Twin 30# L.P. Bottles w/Cover

All Features Not Available on all Models.

HIDEOUT
by Keystone

www.keystone-hideout.com





26" LCD, DVD Tru-Sound Entertainment System



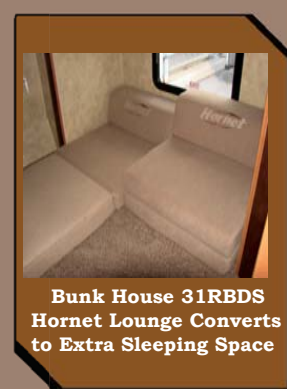
Rotating Grab Handle Assures a Solid Handle for Safety During Exit and Entry.



L.P. Cover With Access Hatch



EZ Trax Axle System Creates a Smoother more Stable Ride



Bunk House 31RBDS Hornet Lounge Converts to Extra Sleeping Space



Walk on Roof Allows Easy Access for Maintenance

160" Wide Mega Slide!

Single Pedestal Table is portable and Easy to Move in and out of the Booth

Ottoman Coffee Table Even More Storage!

5 cu. ft. Storage Drawer Perfect for Storing Bedding



60 x 80 Queen Air Mattress Hide-a-Bed for Comfort Sleeping



Electric Awning is Easy to Use with "One Touch"



72" Slideout Height

84" Ceiling Height

Outdoor Kitchen

- 1 L.P. Quick Connect for BBQ
- 2 Integrated Sink with Hot and Cold Water
- 3 12' Quick Connect Shower Hose
- 4 Large Counter top with Extension
- 5 Drink Refrigerator
- 6 Backed and Wired for a TV with Cable
- 7 Upper Storage Cabinet
- 8 Storage Drawer
- 9 Utensil Drawer

HORNET

by Keystone



2642 Hackberry Drive Goshen, Indiana 46526
(574) 535-2100 www.keystone-hornet.com

Product information is as accurate as possible as of the date of publication of this brochure. Features, floor plans, and specifications are subject to change without notice. Please also consult Keystone's web site at www.keystone.rv.com for more current product information and specifications. **CAUTION:** Owners of Keystone recreational vehicles are solely responsible for the selection and proper use of tow vehicles. All customers should consult with a motor vehicle manufacturer or their dealer concerning the purchase and use of suitable tow vehicles for Keystone products. Keystone disclaims any liability or damages suffered as a result of the selection, operation, use or misuse of a tow vehicle. **KEYSTONE'S LIMITED WARRANTY DOES NOT COVER DAMAGE TO THE RECREATIONAL VEHICLE OR THE TOW VEHICLE AS A RESULT OF THE SELECTION, OPERATION, USE OR MISUSE OF THE TOW VEHICLE.** November 2009.

Dealer:

Colton RV
North Tonawanda, NY 14120
(716) 694-0188
(800) 628-4889
www.ColtonRV.com

Colton RV
Orchard Park, NY 14127
(716) 957-3250
(800) 628-4889
www.Coltonrv.com