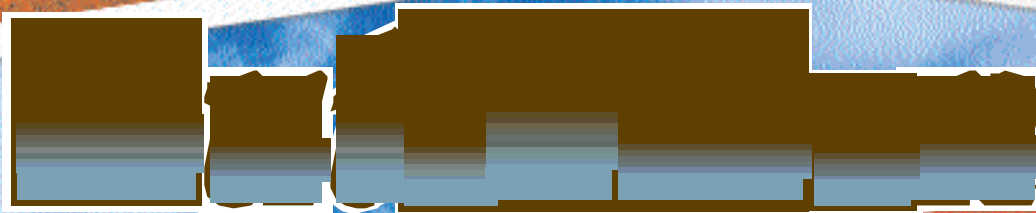


Sport



Lite



2004

Classic



SRV



Going Places...

2004 Dutchmen Sport

24G-M5 shown in Jumble Blue.

High End Designer Decors

Bead Board Cabinet Doors

Congoleum Residential Flooring

Oversized Dinettes

Spacious kitchens with ample storage

23T

Expandables feature 60 x 80 queen beds

23T in Joust Rose

* Some features shown are optional



Discover the Dutchmen difference when you choose a 2004 Sport travel trailer, fifth wheel or expandable. Loaded with features and constructed with Dutch craftsmanship, the 2004 Dutchmen Sport is your best value when it's time for your next recreational vehicle.

With innovative floorplans ranging from 18' to 38', Sport is sure to offer the right floorplan for your family.

From the frame up, Sport's features set it apart from the crowd.

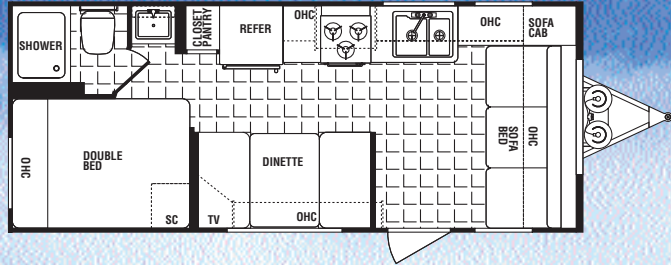
Wood sidewall framing 16" on center, fully-decked, walk-on rubber roof, I-beam steel chassis, aerodynamic profile

and radius corner tinted windows are some of the standard features on the 2004 Sport.

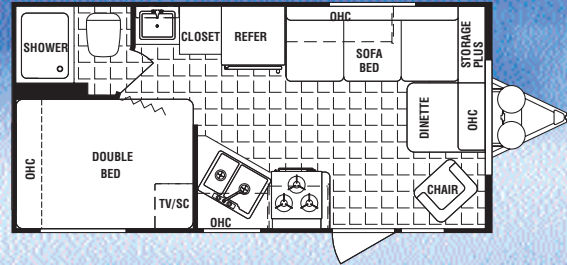
The Sport Interior is a step above the competition.

Residential cabinet doors, Congoleum flooring, luxurious designer decors, and brand name kitchen appliances are a few of the features that make Sport your best RV value.

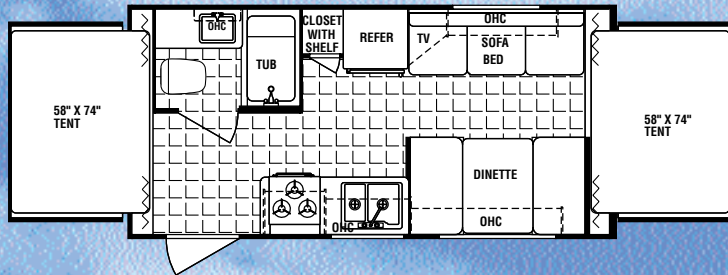
2004 Sport Travel Trailers



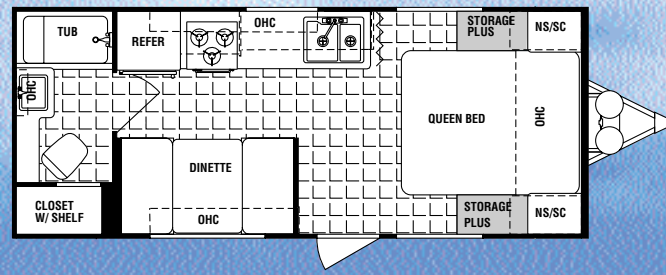
18B



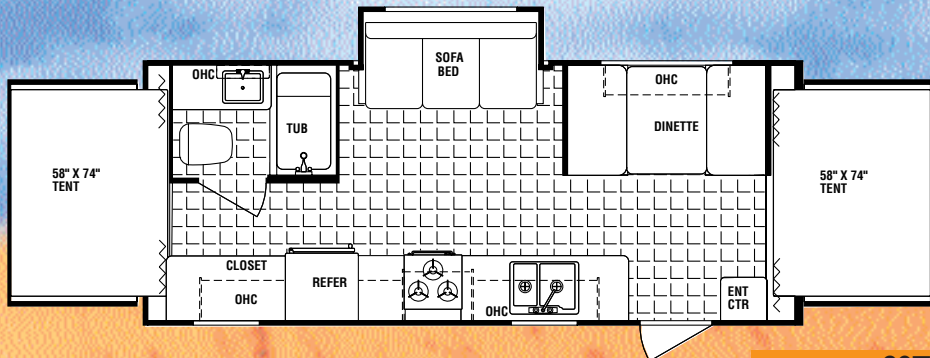
19F



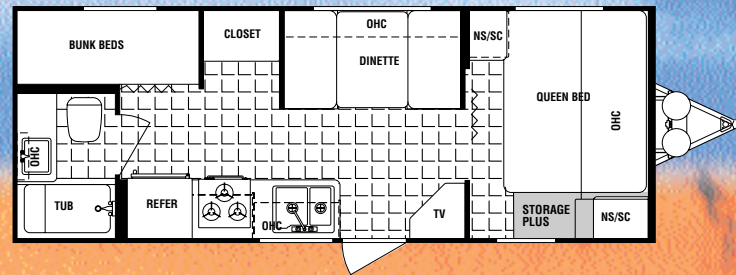
19T



23F



23T

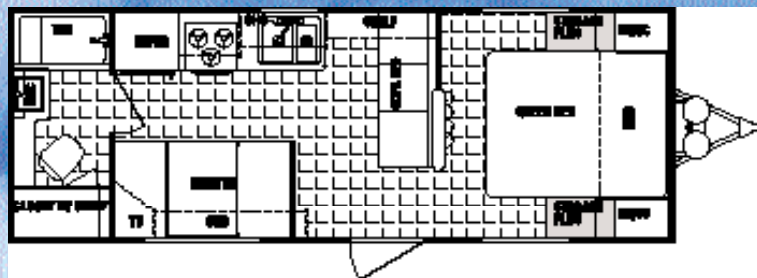


Option T

24B



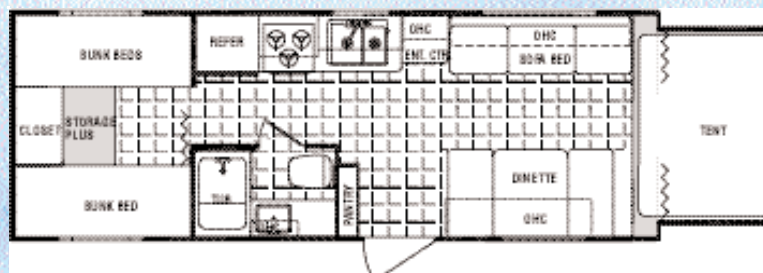
2004 Sport Travel Trailers



25F



25G



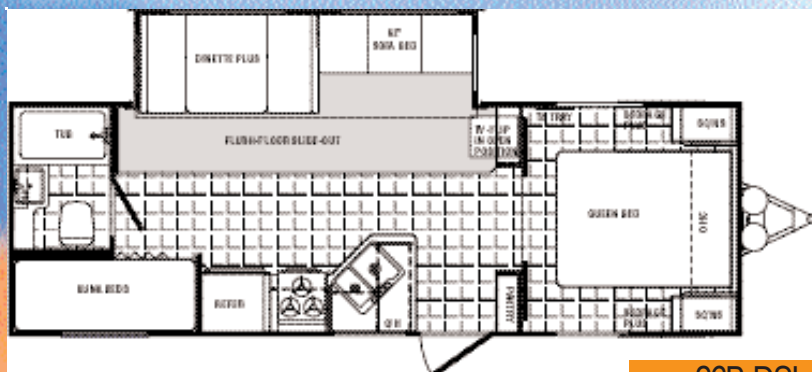
25QT

Option E, T, V, J



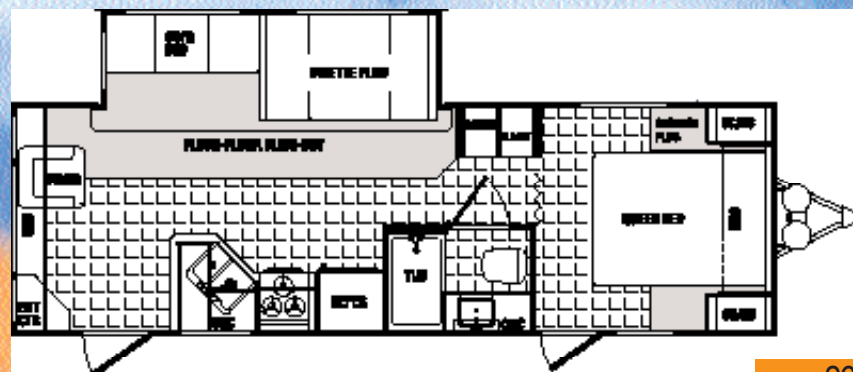
26B

Option T



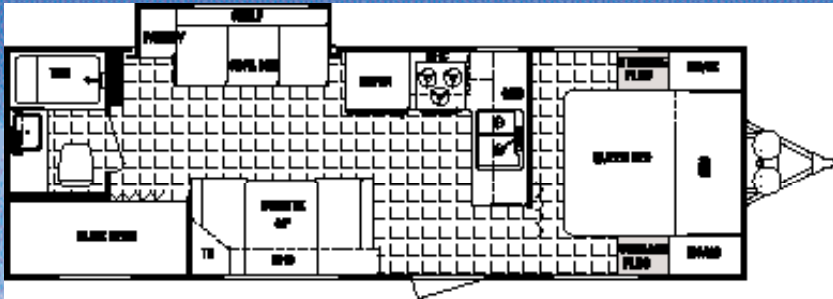
26B-DSL

Option T



26L-DSL

2004 Sport Travel Trailers



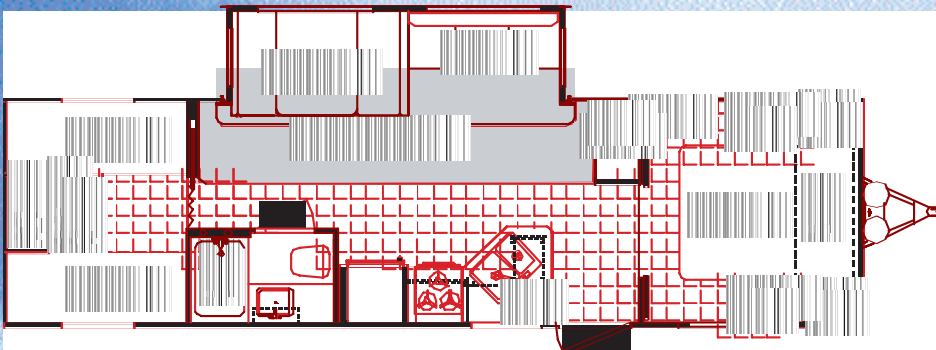
Option T

28B-SSL



Option E, J, T, V

29Q



Option T, J

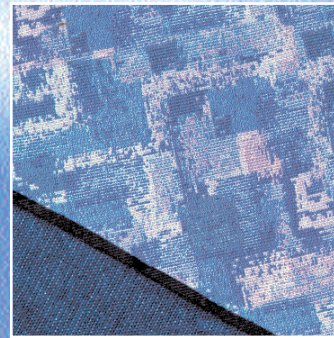
31B-DSL



Option E, T

38B-DSL

Sport Décors



Jumble Blue



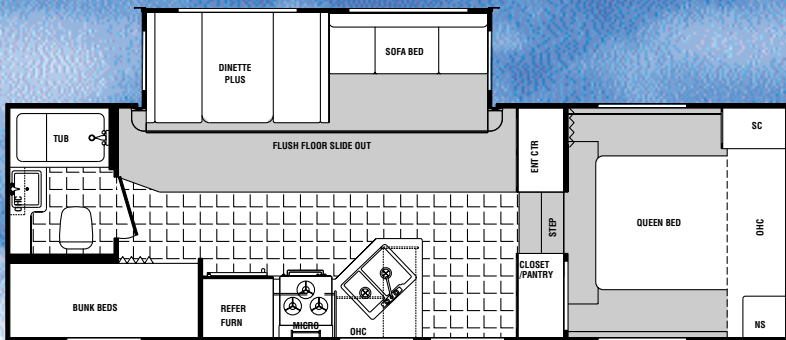
Joust Rose or Green



Many floorplans feature unique storage concepts including the Store-mor rear garage.

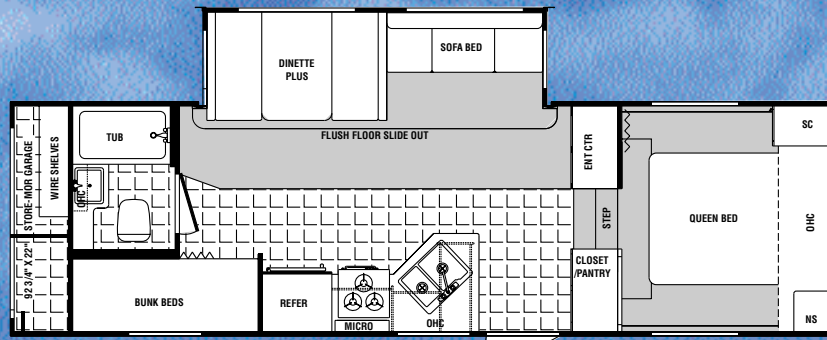


2004 Sport Fifth Wheels



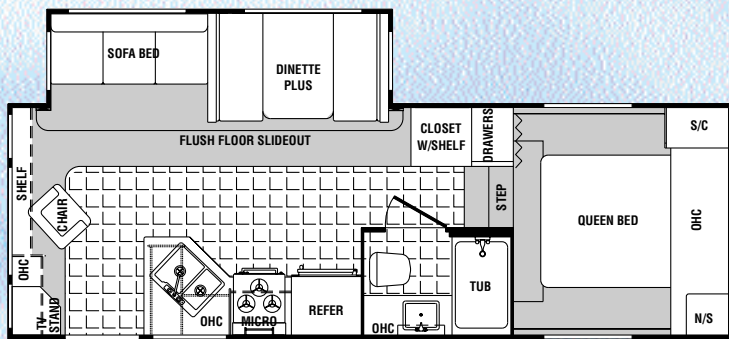
Option T

24B-M5

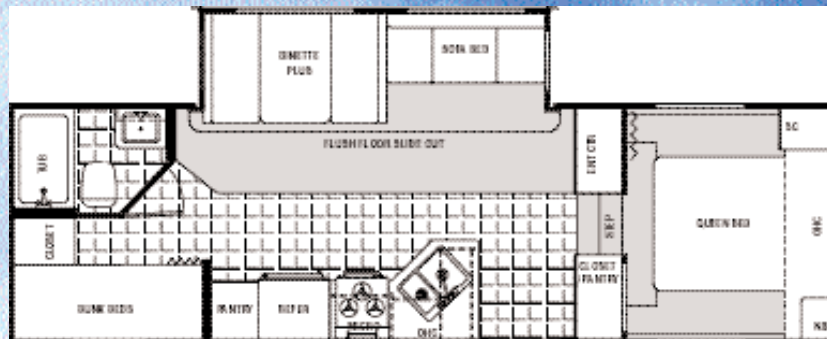


Option T

24G-M5



24L-M5



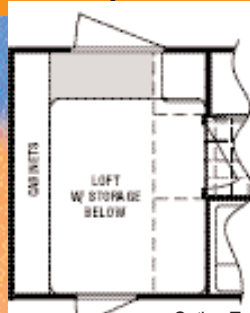
Option T

27B-M5

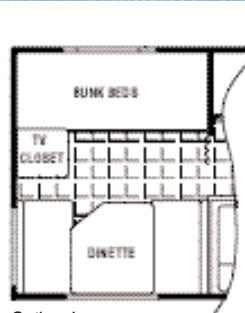


Choose the Pac-N-Play option available on floorplans with bunks to maximize your exterior storage. It's large enough to store bikes, lawn chairs and coolers.

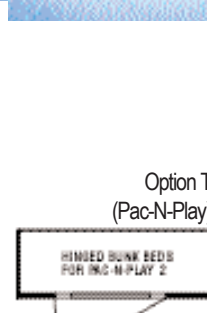
Sport Options



Option E



Option J



Option T
(Pac-N-Play)



Option V (Pac-N-Play)

2004 Dutchmen Lite

27BG shown in Mont Blanc Rose.

Designer Décor and fabrics

Congoleum residential vinyl flooring



26QB shown in Mont Blanc Rose.

Décor coordinated bedspreads, pillow shams and headboards.



Three-burner range, oven and microwave are standard

Double bowl sink with high rinse faucet

26QB Rear Kitchen



* Some features shown are optional

Designed to be towed by most SUV's and light trucks, the Dutchmen Lite is your best choice when it comes to lightweight travel trailers. Choosing a lightweight travel trailer doesn't mean you have to give up the features and options you want in your next recreational vehicle. Floorplans with

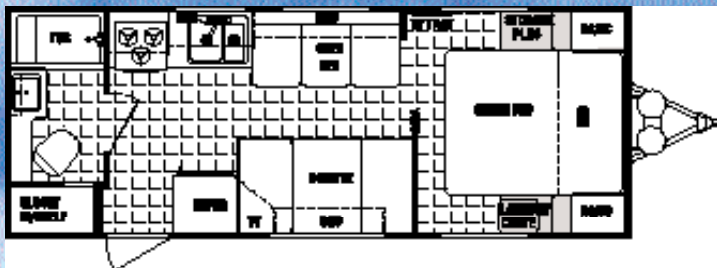
spacious kitchens and baths highlight the 2004 Lite product line. Plus, Dutchmen Lite travel trailers feature abundant interior and exterior storage. Many bunkhouse floorplans feature the optional Pac-N-Play exterior storage compartment. Just fold up the bunks to create an

oversized storage compartment for bikes, lawn chairs, coolers, and all your camping gear. Dutchmen Lite - Your choice for lightweight travel trailers.

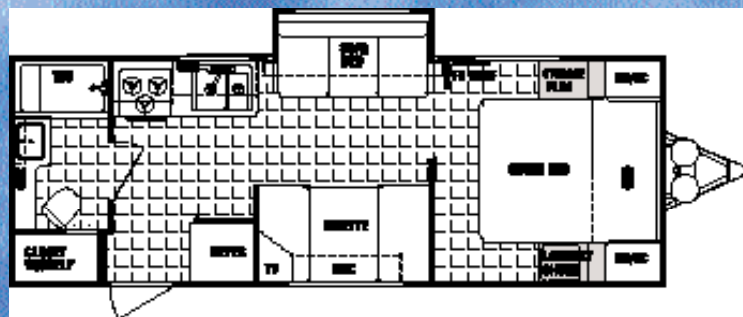




2004 Lite Travel Trailers



24QB

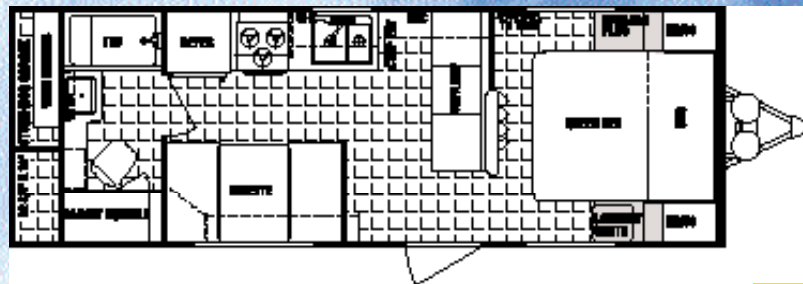


24QB-SSL

Floorplan Coming Soon!

Option T

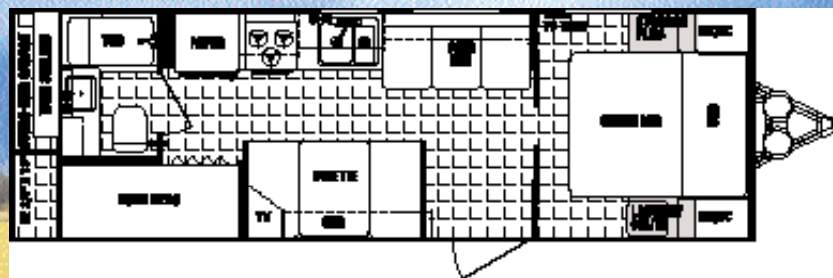
25BH-SSL



25FG



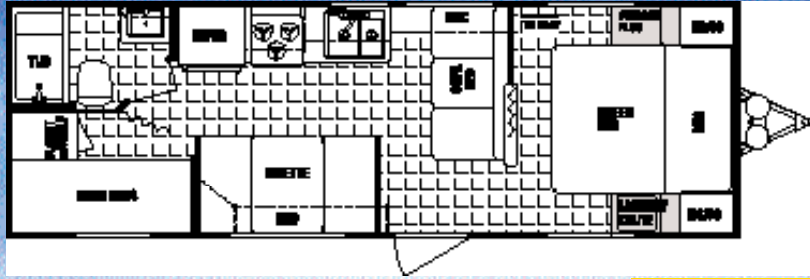
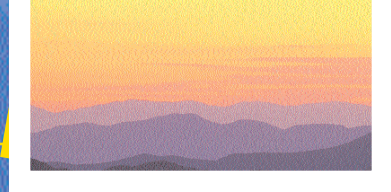
26QB-SSL



Option T

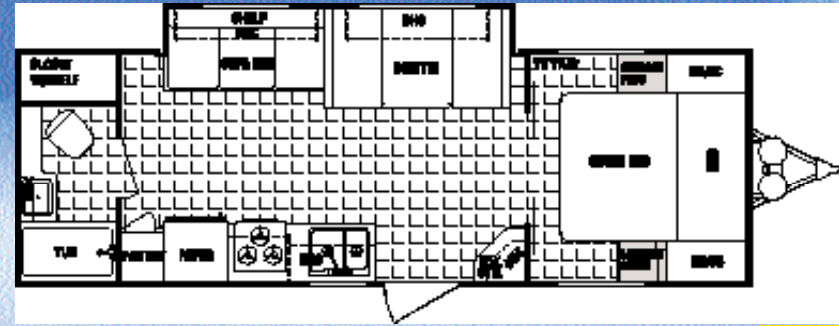
27BG

2004 Lite Travel Trailers

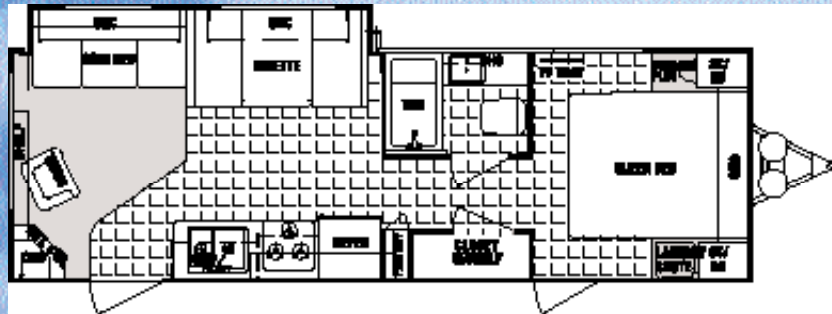


Option T, P, B

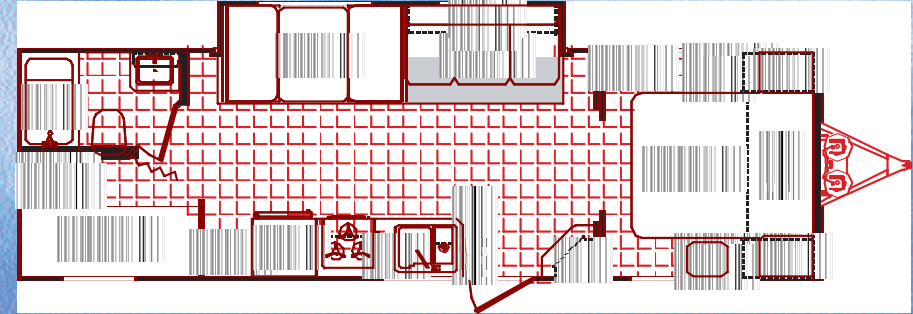
27BH



27FB-SL

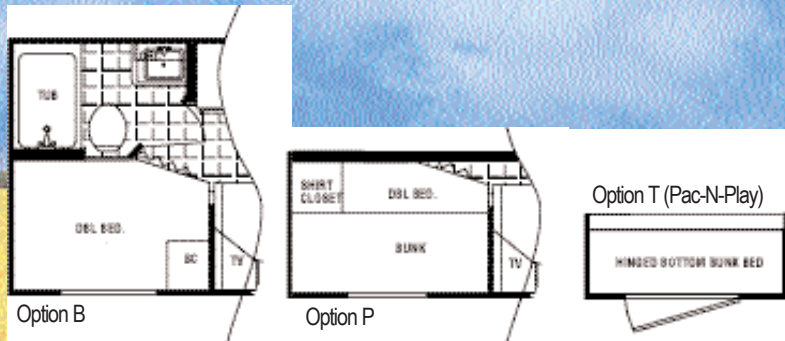


28RL-SL



30BH-SSL

Lite Travel Trailer Options



Lite Travel Trailer Décors



Ocean Blue



Mont Blanc Rose or Green



Blossom Green

2004 Dutchmen Classic



Fifth Wheels feature 6'7" tall slideouts

Large Bay Windows

Optional Sleeper Sofa

Optional Rocker Recliners

Optional round free-standing dinette

Solid maple hardwood doors are standard

Bedroom slides feature a wall-to-wall front closet and a large four drawer dresser

33RL Bedroom

33RL Kitchen

Angled galleys feature additional overhead storage cabinets

33RL shown in Bar Harbor Green.

* Some features shown are optional



Classic: The best choice for features, luxury, and value. Choose a Classic travel trailer, mid-profile fifth wheel or high-profile fifth wheel and find floorplans featuring spacious living areas, functional kitchens, large bathrooms and bedrooms and abundant storage.

Built with pride and Dutch craftsmanship; Classics are loaded with all the features to make your time on the road as enjoyable as your time at home.

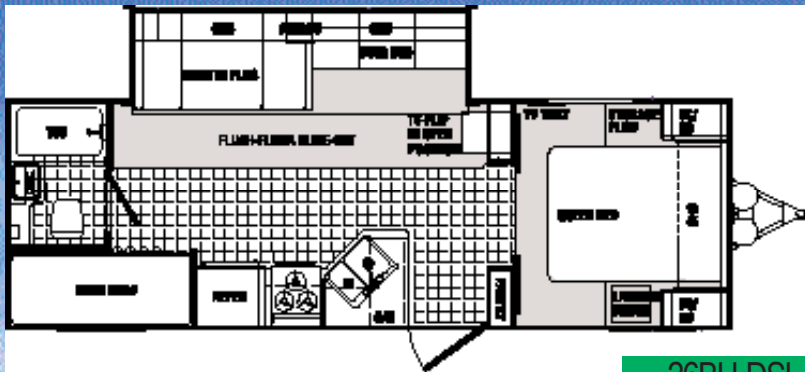
Solid maple cabinet doors, residential tile-like linoleum, brushed nickel hardware, high-end designer decors and

fabrics highlight some of the standard features on the 2004 Classic.

Available upgrade features include a free standing solid wood dinette, hide-a-bed sofa, rocker recliners, 8 cu. ft Norcold refrigerator, and ceiling fans.

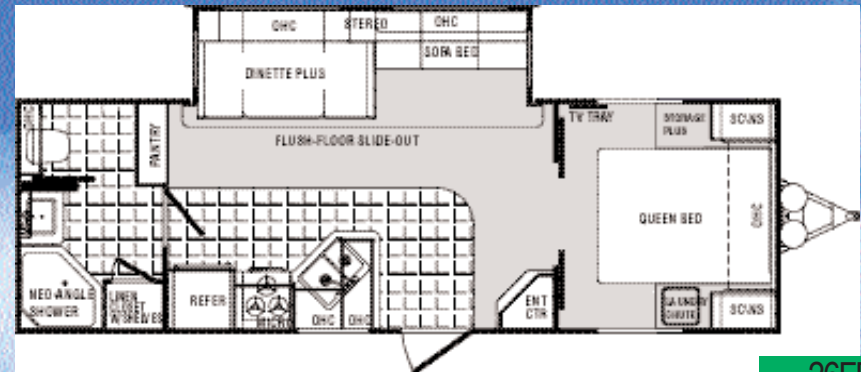
Whether you choose the traditional aluminum construction or the optional laminated fiberglass package, the 2004 Dutchmen Classic offers the most value for your dollar.

2004 Classic Travel Trailers

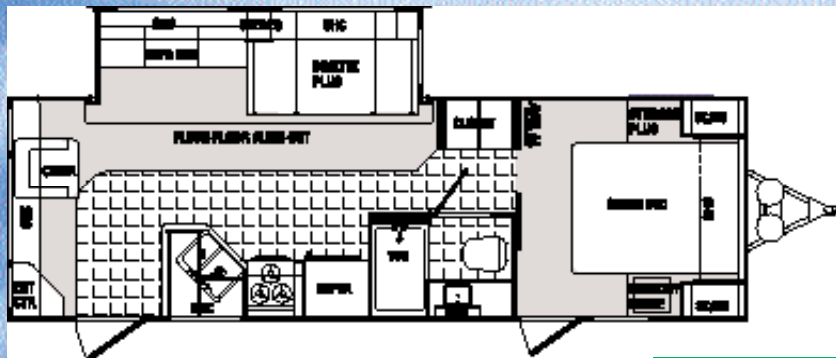


Option T

26BH-DSL



26FB-DSL



26RL-SDL



Option M (Rear)

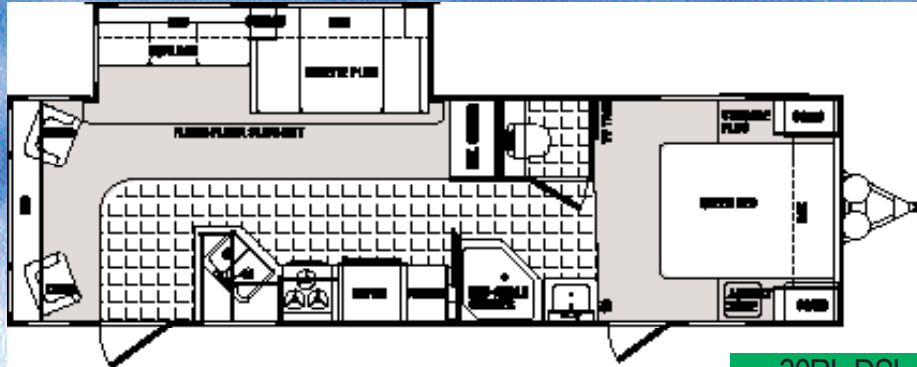
27FK-DSL



Classic's bedrooms include large wardrobes, deep overhead cabinets, designer bedspreads and headboards.

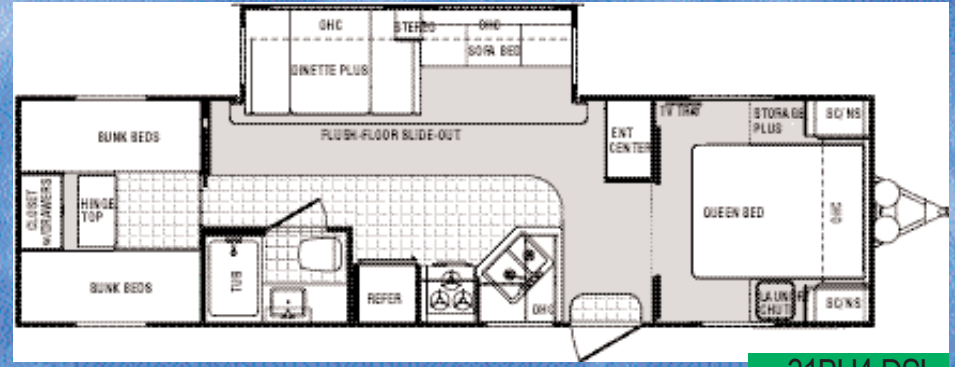


2004 Classic Travel Trailers



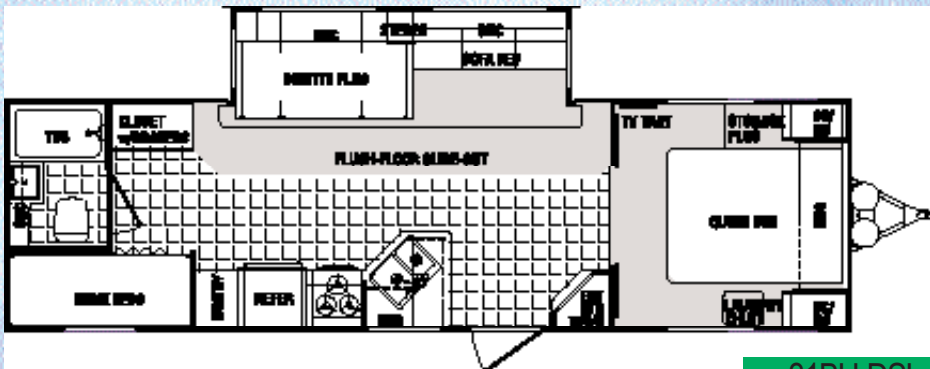
Option M

30RL-DSL



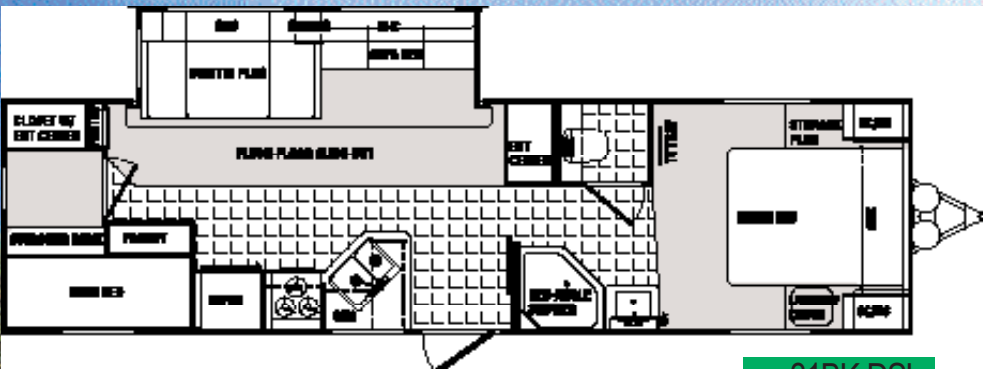
Option T

31BH4-DSL



Option T

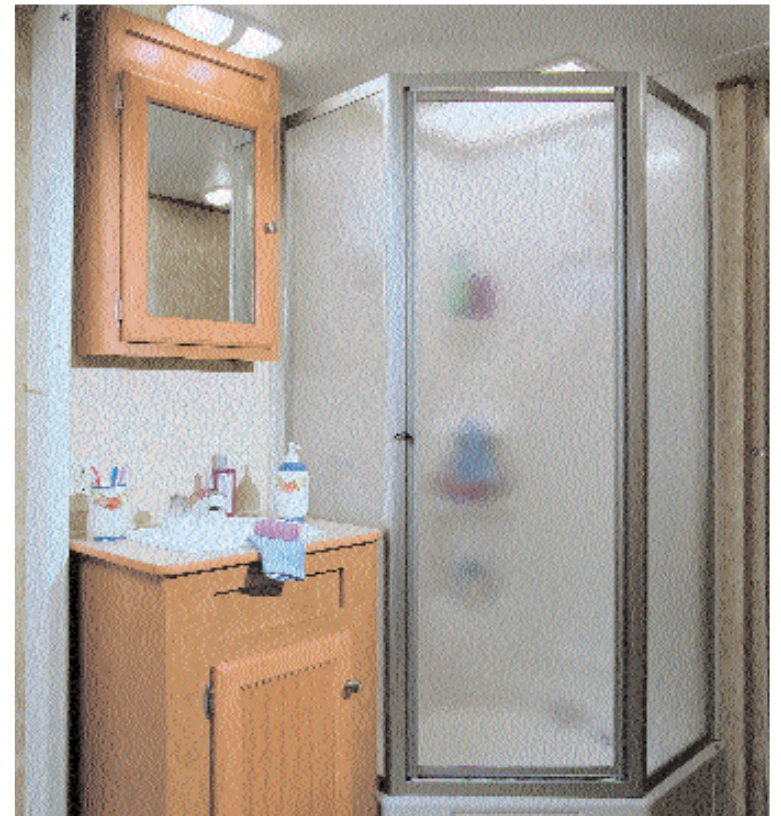
31BH-DSL



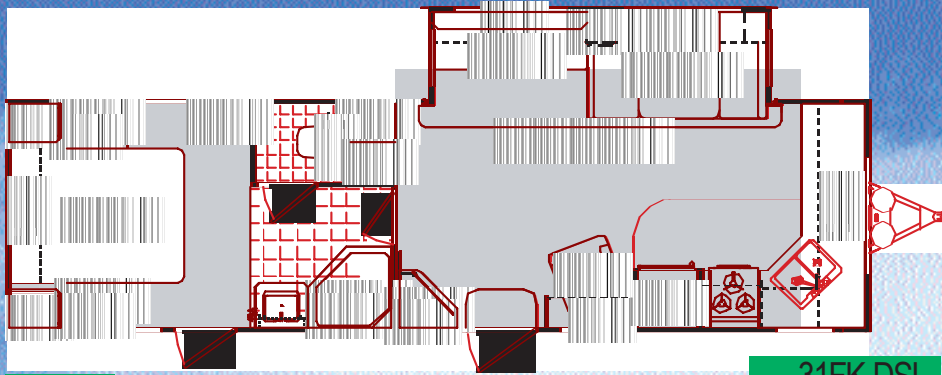
Option D, M, Y, T

31BK-DSL

Many Classic floorplans feature a walk-thru bath with a large Neo-Angle Shower.

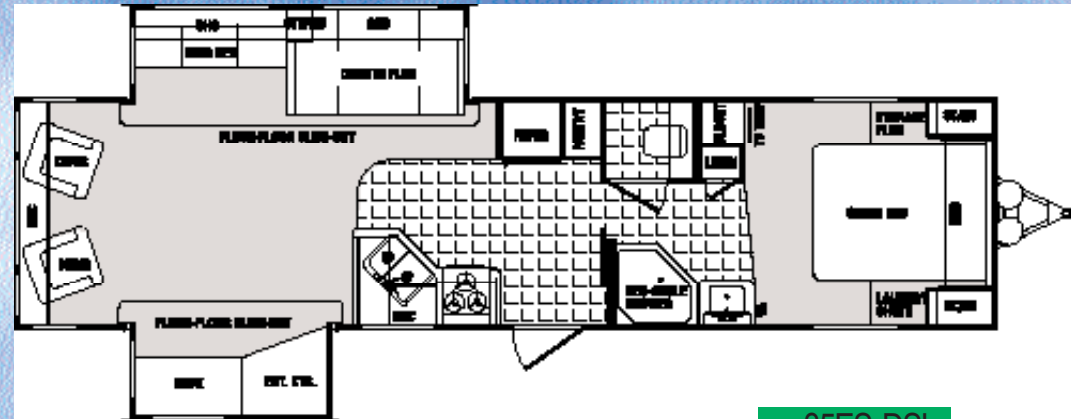


2004 Classic Travel Trailers



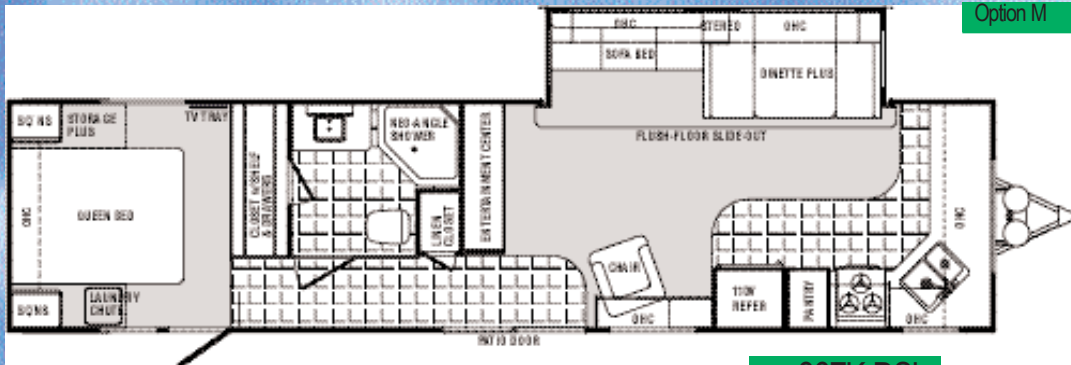
Option M

31FK-DSL



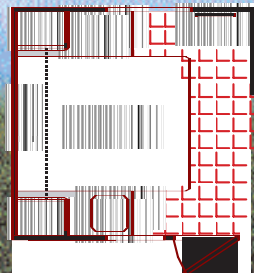
Option M

35ES-DSL

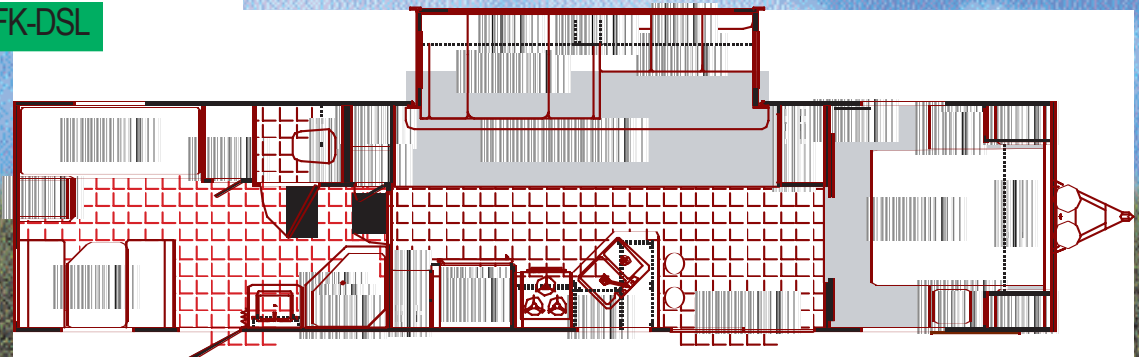


Option M (rear) (vanity replaces closet with drawers)

36FK-DSL



Option L



38FB-DSL

Option L (rear), M (rear), N, T (off door side), X (rear)



2004 Classic Travel Trailers

Classic Travel Trailer Options



Option D



Option M



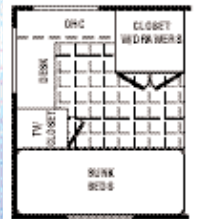
Option N



Option T
Pac-N-Play



Option Y



Option X



Option M (rear only), N (front), T (front)

38BH-DSL

Classic Décors



Bar Harbor Green



Mont Brook Blue

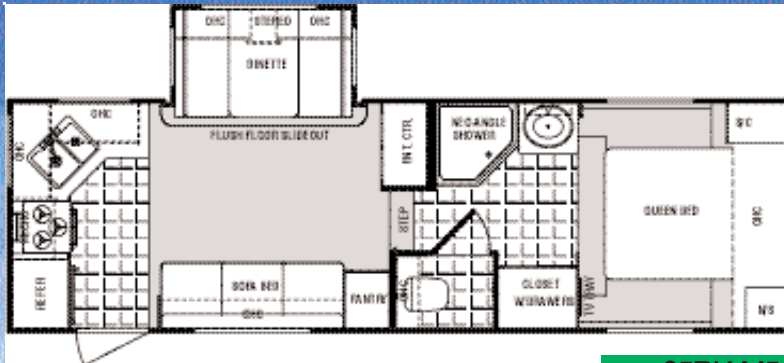


Judith Rose

31BK



2004 Classic Mid-Profile Fifth Wheels



25RK-M5



28RK-M5



27RL-M5



Option D, T, Y

28BH-M5



27RL-M5 in Mont Brook Blue

Mid-profile fifth wheels feature the new "modified flat floor bath deck" for increased head room in the bath/bedroom and a large exterior pass-thru storage compartment.



27RL-M5

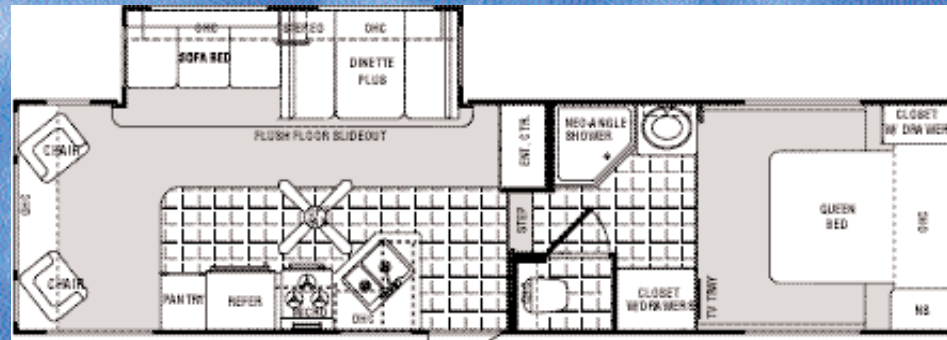


2004 Classic High-Profile Fifth Wheels



Option K

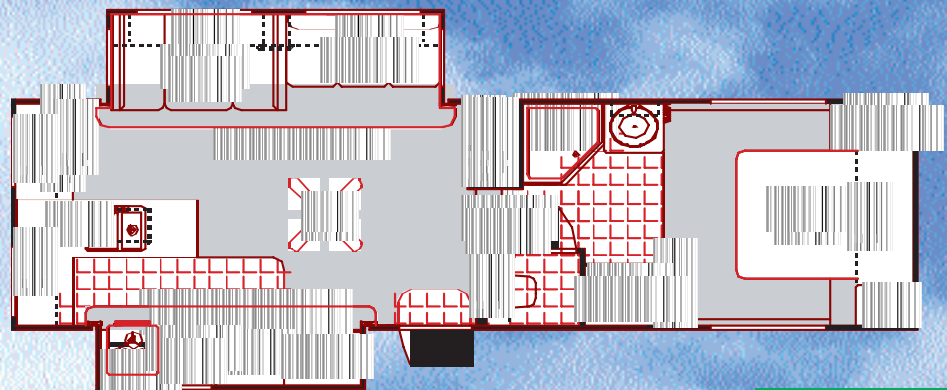
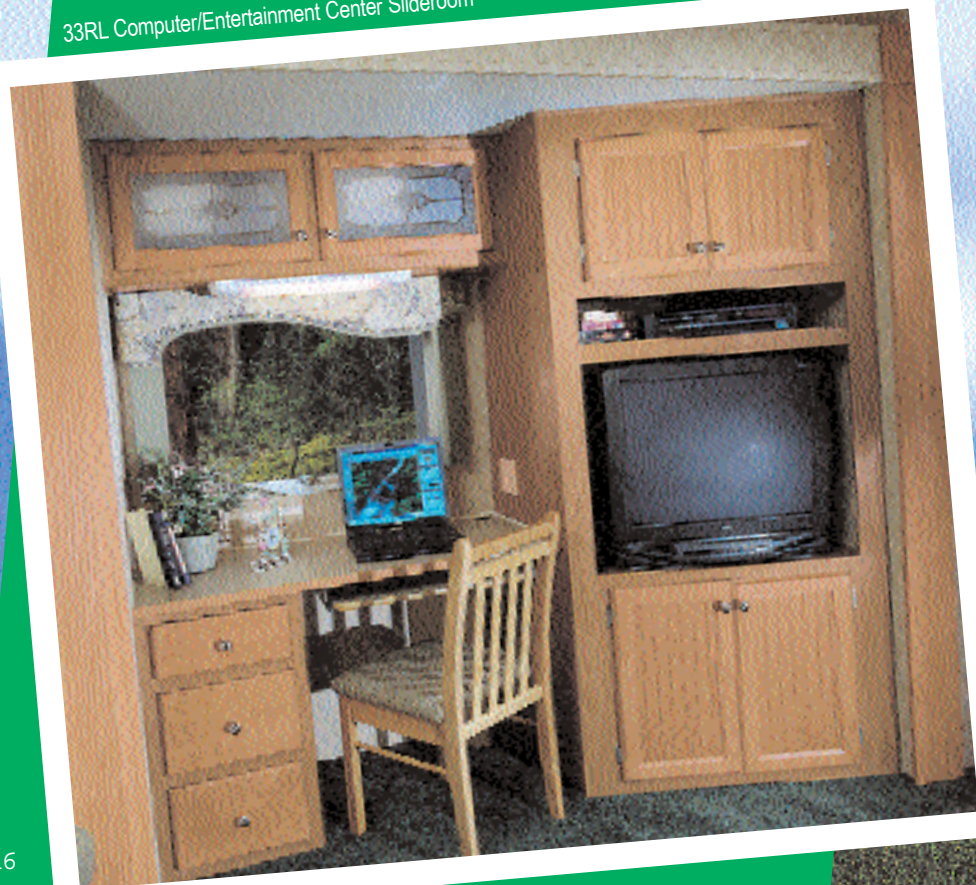
29RL-H5



Option K

31RL-H5

33RL Computer/Entertainment Center Slideroom



Option K

32CG-H5



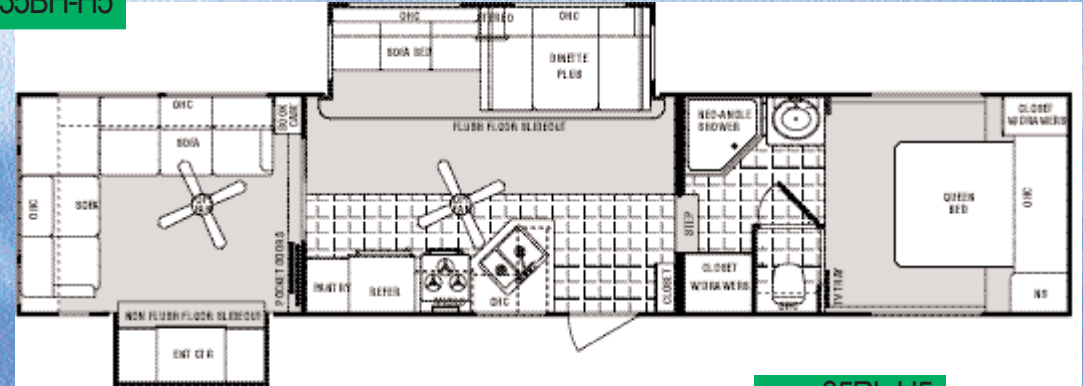
Option K

33RL-H5

2004 Classic High-Profile Fifth Wheels

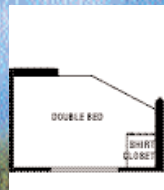


Option K, N, P, B, J (N/A rear door), T, X (W/D on bath deck only)



Option K

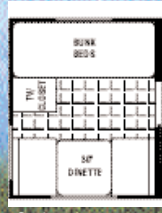
Classic Fifth Wheel Options



Option B



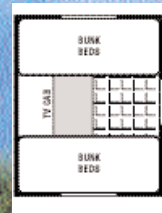
Option D



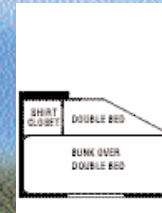
Option J



Option K



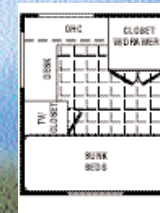
Option N



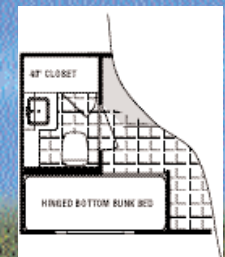
Option P



Option I
(Pac-N-Play)



Option X



Option T
(Pac-N-Play)

2004 Victory Lane SRV's

Sport Recreational Vehicles



Traveling is an adventure. Now you can take your favorite outdoor toys with you on your journey with the 2004 Sport Recreational Vehicle from Dutchmen. Available in both travel trailers and fifth wheels, and with large cargo areas, we are sure to have the model that meets your needs.

But our SRV's are more than just a garage, that's why our living quarters include the same interior appointments and features found on the rest of the Dutchmen line. So, enjoy traveling in a Dutchmen Victory Lane SRV, and remember you can take it with you!



35SRV with optional diamond-plate ramp door

White laminated cabinets

Key locking door to living area

SRV's feature cargo areas up to 12' deep

Optional diamond-plate ramp door

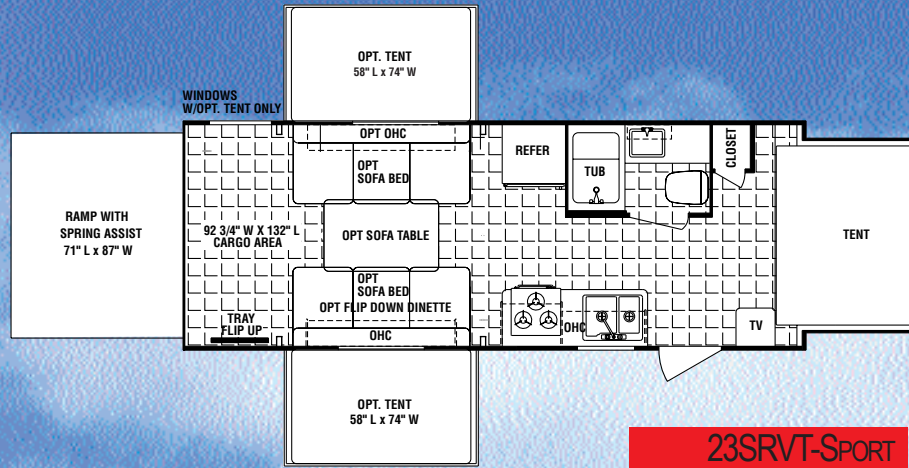


23SRV with optional side tents



35SRV

2004 SRV* Travel Trailers



23SRVT-SPORT

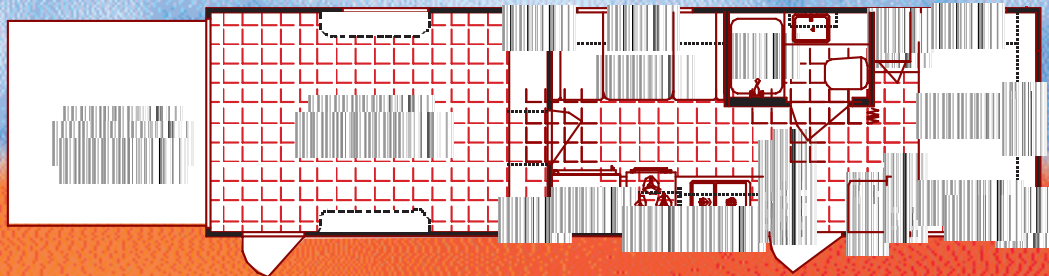


23SRVT with optional side tents and folding sofa beds.

Victory Lane SRV's include up to nine 500 lb. capacity, heavy-duty tie-down rings.



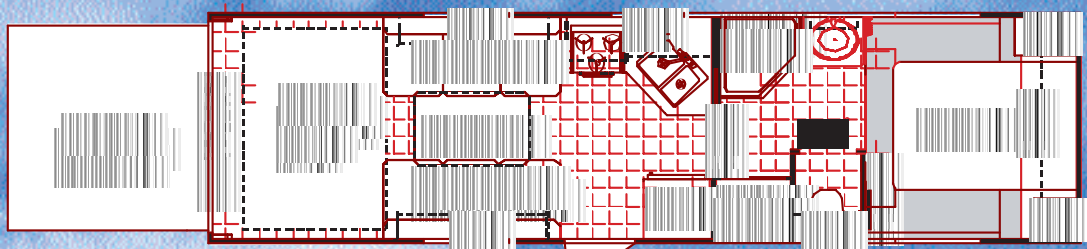
24SRV-CLASSIC



28SRV-CLASSIC



2004 SRV* Fifth Wheels



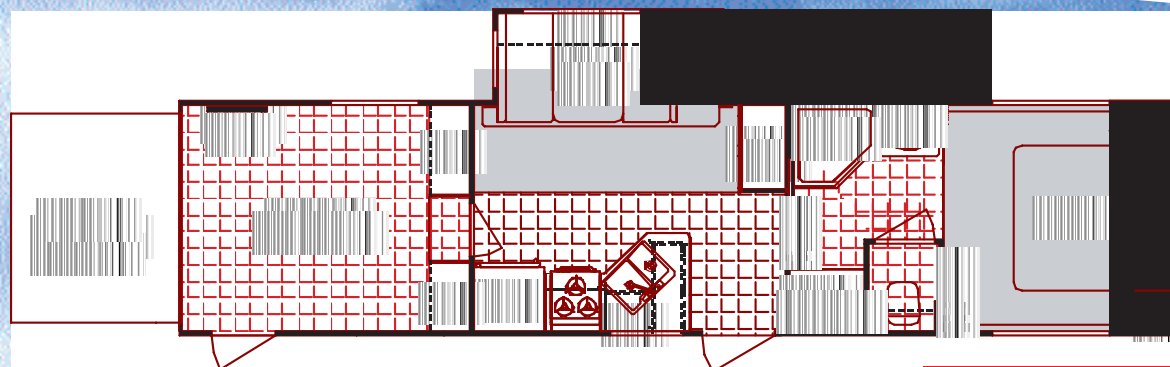
26SRV-M5 CLASSIC

Upgrade your SRV with the optional removable rear ladder or diamond-plate ramp door.

The diamond-plate ramp door extension is standard!

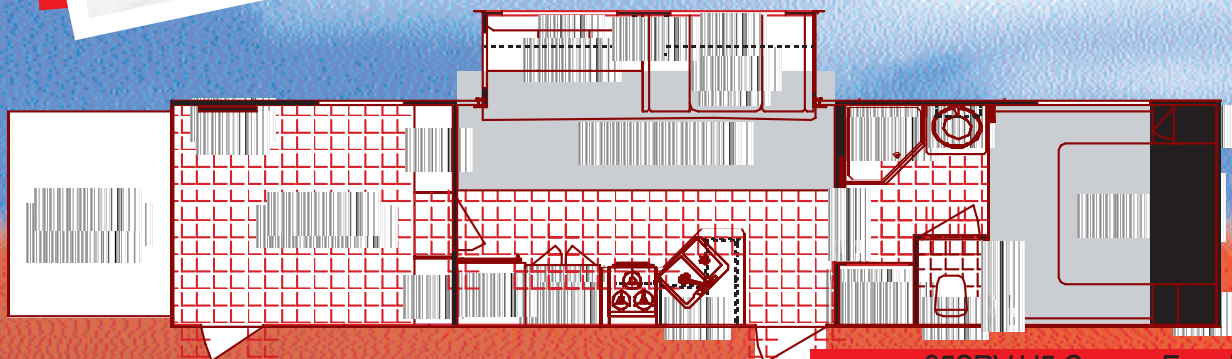


Classic SRV's feature a generator prep option. Onan LP Generators are also available.



Option K

32SRV-H5 CLASSIC



Option K

35SRV-H5 CLASSIC FIFTH WHEEL

See Sport Décors and Options for the 23SRVT. Use the Classic Décors and Options for all other floorplans.

Specifications and Weights

Model	Model Line	Exterior Width	Exterior Height	Exterior Length	Hitch Dry Weight	Gross Vehicle Weight	Unloaded Vehicle Weight	Net Cargo Weight	Fresh Water Capacity	Grey Water Capacity	Black Water Capacity	Tire Size	Furnace Size (BTU's)
18B	Dutchmen Sport TT	N/A	N/A	N/A	N/A	N/A	N/A	N/A	N/A	N/A	N/A	N/A	N/A
19F	Dutchmen Sport TT	8ft	10'3"	20'3"	508	7700	3990	3710	36	30	30	ST205/75D15 (C)	20000
19T	Dutchmen Sport TT	8ft	10'3"	20'4"	472	7700	3908	3792	36	30	30	ST205/75D15 (C)	20000
23F	Dutchmen Sport TT	8ft	10'3"	23'6"	512	7700	4204	3496	36	30	30	ST205/75D15 (C)	20000
23T	Dutchmen Sport TT	8ft	10'3"	23'6"	598	7700	4694	3006	36	30	30	ST205/75D15 (C)	20000
24B	Dutchmen Sport TT	8ft	10'3"	25'3"	540	7700	4452	3248	36	30	30	ST205/75D15 (C)	20000
25F	Dutchmen Sport TT	8ft	10'3"	26'3"	492	7700	4348	3352	36	30	30	ST205/75D15 (C)	20000
25G	Dutchmen Sport TT	8ft	10'3"	27'9"	522	7700	4828	2872	36	30	30	ST205/75D15 (C)	25000
25QT	Dutchmen Sport TT	8ft	10'3"	26'6"	668	7700	4598	3102	36	30	30	ST205/75D15 (C)	20000
26B	Dutchmen Sport TT	8ft	10'3"	27'8"	570	7700	4726	2974	36	30	30	ST205/75D15 (C)	25000
26B-DSL	Dutchmen Sport TT	8ft	11'	28'5"	916	9680	6412	3268	46	30	30	ST225/75R(D)	31000
26L-DSL	Dutchmen Sport TT	8ft	11'	30'2"	694	7700	6378	1322	47	30	30	ST205/75R15 (C)	31000
28B-SSL	Dutchmen Sport TT	8ft	10'3"	29'4"	506	7700	5268	2432	36	30	30	ST205/75D15 (C)	31000
29Q	Dutchmen Sport TT	8ft	10'7"	31'3"	660	7700	5338	2362	36	30	30	ST205/75D15 (C)	31000
31B-DSL	Dutchmen Sport TT	8ft	11'	33'2"	1018	9680	7134	2546	46	30	30	ST225/75R15 (D)	34000
38F-DSL	Dutchmen Sport TT	8ft	11'	39'2"	1184	11176	7930	3246	46	30/30	30	ST225/75R15 (D)	34000
24B-M5	Dutchmen Sport FW	8ft	12'1"	27'10"	1164	10560	6976	3584	46	30	30	ST225/75R15 (D)	31000
24G-M5	Dutchmen Sport FW	8ft	12'4"	29'11"	1356	10560	7278	3282	46	30	30	ST225/75R15 (D)	31000
24L-M5	Dutchmen Sport FW	8ft	12'	26'0"	986	10560	6720	3840	46	30	30	ST225/75R15 (D)	31000
27B-M5	Dutchmen Sport FW	8ft	12'5"	29'8"	990	10560	7326	3234	46	30	30	ST225/75R15 (D)	31000
24BH-SSL	Dutchmen LiteTT	N/A	N/A	N/A	N/A	N/A	N/A	N/A	N/A	N/A	N/A	N/A	N/A
24QB	Dutchmen Lite TT	8ft	10'3"	25'3"	486	7700	4720	2980	36	30	30	ST205/75D15 (C)	20000
24QB-SSL	Dutchmen Lite TT	8ft	10'3"	26'2"	528	7700	4906	2794	36	30	30	ST205/75D15 (C)	25000
25FG	Dutchmen Lite TT	8ft	10'3"	27'9"	522	7700	4828	2872	36	30	30	ST205/75D15 (C)	25000
26QB-SSL	Dutchmen Lite TT	8ft	10'3"	27'8"	464	7700	5316	2384	36	30	30	ST205/75D15 (C)	25000
27BG	Dutchmen Lite TT	8ft	10'3"	29'3"	456	7700	5170	2530	36	30	30	ST205/75D15 (C)	25000
27BH	Dutchmen Lite TT	8ft	10'3"	28'7"	642	7700	5006	2694	36	30	30	ST205/75D15 (C)	25000
27FB-SL	Dutchmen Lite TT	8ft	10'3"	28'6"	734	7700	5364	2336	36	30	30	ST205/75D15 (C)	31000
28RL-SL	Dutchmen Lite TT	8ft	10'3"	29'3"	554	7700	5280	2420	36	30	30	ST205/75D15 (C)	31000
30BH-SL	Dutchmen Lite TT	N/A	N/A	N/A	N/A	N/A	N/A	N/A	N/A	N/A	N/A	N/A	N/A
26BH-DSL	Dutchmen Classic TT	8ft	11'	28'5"	916	9680	6758	2922	46	30	30	ST225/75R15 (D)	31000
26FB-DSL	Dutchmen Classic TT	8ft	11'	29'9"	684	9680	6416	3264	46	30	30	ST225/75R15 (D)	31000
26RL-DSL	Dutchmen Classic TT	8ft	11'	30'2"	758	9680	6738	2942	46	30	30	ST225/75R15 (D)	31000
27FK-DSL	Dutchmen Classic TT	8ft	11'	30'0"	1046	9680	6738	2942	46	30/30	30	ST225/75R15 (D)	31000
30RL-DSL	Dutchmen Classic TT	8ft	11'	32'3"	796	9680	7060	2620	46	30	30	ST225/75R15 (D)	31000
31BH-DSL	Dutchmen Classic TT	8ft	11'	32'6"	1328	9680	6682	2998	46	30	30	ST225/75R15 (D)	34000
31BH4-DSL	Dutchmen Classic TT	8ft	11'	33'3"	1032	9680	7236	2444	46	30	30	ST225/75R15 (D)	34000
31BK-DSL	Dutchmen Classic TT	8ft	11'	34'8"	1016	9680	7442	2238	46	30/30	30	ST225/75R15 (D)	34000
31FK-DSL	Dutchmen Classic TT	8ft	11'	33'2"	1200	9680	6874	2806	46	30/30	30	ST225/75R15 (D)	34000
35ES-DSL	Dutchmen Classic TT	8ft	11'	37'5"	976	11176	8274	2902	46	30/30	30	ST225/75R15 (D)	34000
36FK-DSL	Dutchmen Classic TT	8ft	11'	37'7"	892	9680	7790	1890	46	30/30	30	ST225/75R15 (D)	34000
38BH-DSL	Dutchmen Classic TT	8ft	11'	N/A	1014	11176	7962	3214	46	30	30	ST225/75R15 (D)	34000
38FB-DSL	Dutchmen Classic TT	8ft	11'	39'2"	1176	11176	8146	3030	46	30	30	ST225/75R15 (D)	34000
25RK-M5	Dutchmen Classic FW	8ft	12'2"	28'8"	1108	10560	7222	3338	46	30/30	30	ST225/75R15 (D)	34000
27RL-M5	Dutchmen Classic FW	8ft	12'2"	30'2"	1412	10560	7718	2842	46	30/30	30	ST225/75R15 (D)	31000
28BH-M5	Dutchmen Classic FW	8ft	12'4"	32'6"	1346	10560	8072	2488	46	30/30	30	ST225/75R15 (D)	34000
28CG-M5	Dutchmen Classic FW	N/A	N/A	N/A	N/A	N/A	N/A	N/A	N/A	N/A	N/A	N/A	N/A
28RK-H5	Dutchmen Classic FW	8ft	12'2"	31'8"	1372	10560	7822	2738	46	30/30	31	ST225/75R15 (D)	34000
29RL-H5	Dutchmen Classic FW	8ft	12'6"	33'2"	1536	12192	8300	3892	46	30/30	30	ST225/75R15 (D)	34000
31RL-H5	Dutchmen Classic FW	8ft	12'6"	34'0"	1570	12192	8640	3552	46	30/30	30	ST225/75R15 (D)	34000
*32CG-H5	Dutchmen Classic FW	8ft	12'2"	31'8"	1508	10560	7834	2726	46	30/30	30	ST225/75R15 (D)	34000
33RL-H5	Dutchmen Classic FW	8ft	12'6"	35'9"	1456	12480	9140	3340	46	30/30	30	LT235/85R16 (E)	34000
35BH-H5	Dutchmen Classic FW	8ft	12'6"	37'9"	1670	12480	9336	3144	46	30/30	30/30	LT235/85R16 (E)	34000
*35RL-H5	Dutchmen Classic FW	8ft	12'9"	38'2"	1924	14400	10462	3938	46	30/30	30	LT235/85R16 (E)	34000
23SRV	Dutchmen Sport SRV TT	8ft	10'5"	25'2"	814	7700	4834	2866	36	30	30	ST205/75D15 (C)	20000
24SRV	Dutchmen Sport TT	8ft	11'7"	26'	1062	11176	6122	5054	30	30	30	ST225/75R15 (D)	31000
28SRV	Dutchmen Sport TT	8ft	11'3"	37'10"	1072	11176	7268	3908	100	31	31	ST225/75R15 (D)	31000
26SRV-M5	Dutchmen Sport FW	N/A	N/A	N/A	N/A	N/A	N/A	N/A	N/A	N/A	N/A	N/A	N/A
32SRV-H5	Dutchmen Sport FW	N/A	N/A	N/A	N/A	N/A	N/A	N/A	N/A	N/A	N/A	N/A	N/A
*35SRV-H5	Dutchmen Sport FW	8ft	12'9"	39'3"	1916	14400	10440	3960	100	30/30	30	LT235/85R16 (E)	35000

*Laminate only.

2004 Features and Options

2004 STANDARDS & FEATURES	Sport	Lite	Classic	SRV
Exterior Construction				
Chassis ALKO Leaf Spring Axle			N/A	N/A
ALKO leaf spring axles with Easy Lube feature (DSL & Fifth Wheels)	N/A	N/A		
Extended pin boxes (not all models)		N/A		
I-beam cambered chassis				
Large support outriggers w/solid continuous weld				
Hitch light	N/A			*
Rear bumper with sewer hose storage				
Double or triple entry steps-welded to frame				
Tandem axles with 4 wheel electric brakes				
Track guided electric powered flush floor slide-out system in living room large slide (DSL models)		N/A		
Manual slide-out system on SSL and SL models			N/A	N/A
Rotocast holding tanks				
Twin 30# LP bottles with cover				
Walls				
Aerodynamic front profile with diamond plate rock guard - Travel Trailers				
1-1/2"x2" walls on 16" centers (non DSL)			N/A	N/A
2"x2" walls on 16" centers (DSL models)		N/A		
2" belt rail around the perimeter for extra strength				
Reinforced studding around all entry doors and windows				
Fiberglass insulation-R7				
Quad lock slide seal system (models w/slide rooms)				
Tinted radius clamp ring windows				
Rain gutter w/corner downspout along the roof line				
Duo pane patio sliding door on 36" up travel trailers	N/A	N/A		N/A
Flush combo entry latch/dead-bolt lock				
Pre-wired for digital satellite system				
Radius exterior Storage Plus compartments (where possible)				
30" radius entry door (most floor plans)				
Locking insulated luggage doors with finger pulls				
Detachable 30 amp power cord DSL Models Only - Sport		N/A		
Ratio light				
Steel reinforced ramp door with flip ramp transition panel	N/A	N/A	N/A	
Pancake light in exterior storage compartments	N/A			
Roof				
1 piece seamless EPDM rubber roof (12 year rubber warranty)				
Radius 5" truss roof rafters				
3/8" wood roof decking full length of the unit - walk on roof				
5/8" exterior grade tongue & groove plywood floor				
Ducted air conditioning (22 and up models)				
Interior				
Décor				
Congoleum tile like linoleum				
Luxurious color coordinated designer interiors				
Coat hooks (most models)	N/A			
Door globe light over dinette	N/A			

2004 STANDARDS & FEATURES	Sport	Lite	Classic	SRV
Brushed nickel cabinet door hardware				
Dutch maple interior wood color				
Designer valances				
Living room/bedroom carpet	OPT	OPT		
Living room carpet (DSL models)		N/A		
Mini-blinds throughout				
Solid wood raised panel cabinet doors- galley	N/A	OPT		
Bead board cabinet doors				
Metal drawer guides on all storage drawers				
Oversized storage drawers				
Laminated countertops				
Roof vents	N/A			
Slide-out overhead cabinets (living room slide only)	OPT			*
Swivel rocker (not all models)				
Wall clock in living room slide-out	N/A	N/A		*
Kitchen				
44" booth dinette plus (DSL models)		N/A		
Double bowl white acrylic sink with high rise faucet				
Reversible dinette seats				
Cabinet door below dinette				
Exterior baggage door below dinette	N/A			
Sink cover	N/A			
Stove cover	OPT	OPT		*
Bath				
ABS tub surround				
Medicine cabinet with mirror				
Shower curtain (Most models)				
Glass shower door (Neo Angle Showers)	OPT	N/A		*
Towel bar with coat hooks				
12 volt power exhaust roof vent in bath	N/A			
GFI protected 110 volt duplex receptacle				
Thetford toilet				
Bedroom				
Designer reading lights in bedroom	N/A			*
Door coordinated bedspread				
Door coordinated headboard	N/A			
2 pillows on queen bed	N/A	N/A		*
Laundry chute (most models)	N/A			
Innerspring mattress				
Misc				
Cargo area tie downs (SRV's)		N/A	N/A	
Garage area access door	N/A	N/A	N/A	
Garage storage cabinets-white laminate (enclosed garages)	N/A	N/A	N/A	
Spring assisted rear ramp door		N/A	N/A	

2004 Features and Options

2004 STANDARDS & FEATURES	Sport	Lite	Classic	SRV
Appliances/Equipment				
13.5 BTU A/C	OPT			
3 burner high-output cook top		N/A	N/A	N/A
3 burner high-output range with oven	OPT			*
6 gallon gas water heater		N/A	N/A	N/A
6 gallon quick recovery gas DSI water heater	N/A			
A&E patio awning	OPT			
AM/FM stereo cassette with CD player	OPT			
Cable TV hook-up				
Demand water pump				
Fire extinguisher				
Hydro flame forced air, DSI furnace with wall thermostat				
LPG leak detector				
Microwave oven	OPT			
Norcold double door gas/electric refrigerator				
TV antenna with power booster	OPT			
Range hood with 12 volt light and exhaust fan				
Smoke detector				
55 amp converter with built in battery charger				
Wall mounted systems monitor panel				
Water heater bypass				
110 volt residential style refer on travel trailers 36' and up travel trailers	N/A	N/A		N/A
120 volt duplex receptacles throughout				
120 volt patio receptacle				
2004 OPTIONS (Not all options available on all floorplans)				
Laminate Package (Classics and SRV Fifth Wheels)	N/A	N/A	OPT	*
Laminated aluminum framed walls				
Front lower Diamond Plate (TT's)				
Roll front fiberglass cap on high profile 5th wheels				
Roll front ABS cap on mid-profile 5th wheels				
Comfort Package includes: (parts available independently)				
13.5 BTU A/C, A&E Awning, AM/FM stereo w/CD player, TV antenna, Stove cover, 3 burner range w/oven and Microwave.	OPT	STD	STD	*
3 burner range with oven replacing 3 burner cook top	OPT	STD	STD	STD
6 gal. gas/electric water heater w/DSI	OPT	OPT	OPT	OPT
Air Conditioner - 15,000 BTU A/C (Some Models)	OPT	N/A	OPT	*
Aluminum rims	N/A	N/A	OPT	*
Bedroom carpet and pad (non 5th wheels)	OPT	OPT	STD	STD
Bedroom slide out (see floor plan options)	N/A	N/A	OPT	OPT
Bi-fold shower door	N/A	OPT	OPT	*
Ceiling fan with light (high-profile 5th wheels)	N/A	N/A	OPT	*
Day/night shades	N/A	N/A	OPT	*
Electric front jacks - fifth wheels	OPT	N/A	OPT	*
Electric motor slideout	OPT	OPT	STD	*
Enclosed insulated underbelly (Available with Fiberglass Package only)	N/A	N/A	OPT	*
Exterior Vitco grill (Most models)	OPT	OPT	OPT	OPT
Extra large 8 cu. ft. refer	N/A	N/A	OPT	*
Fantastic fan in cargo or living areas w/train sensor	N/A	N/A	OPT	*

2004 OPTIONS	Sport	Lite	Classic	SRV
Fold away dinette (see floorplans)	N/A	N/A	N/A	*
Free standing dinette with 4 chairs - round (DSL models)	N/A	N/A	OPT	*
Free standing dinette with 4 chairs - square (DSL models)	OPT	N/A	OPT	*
Front fiberglass cap on fifth wheels - High profile models	N/A	N/A	OPT	OPT
Front ABS cap on M5 fifth wheels	N/A	N/A	OPT	OPT
Front and/or rear stabilizer jacks	OPT	OPT	OPT	OPT
*Garage floor diamond plate (not all models)	N/A	N/A	N/A	OPT
*Generator installed (laminite H5 and most SRV's)	N/A	N/A	OPT	*
Generator prep (laminite H5 and most SRV's)	N/A	N/A	OPT	*
Hide-a-bed sofa (DSL models only)	OPT	N/A	OPT	OPT
Living room carpet and pad (std. all DSL models)	OPT	OPT	STD	*
Norcold double door gas/electric refrigerator (36' & up travel trailers)	N/A	N/A	OPT	N/A
Phone jack	N/A	N/A	OPT	*
Poly-Air roof insulation - adds R-7	N/A	N/A	OPT	*
Power tongue front jack (travel trailers)	N/A	N/A	OPT	OPT
Ramp door diamond plate	N/A	N/A	N/A	OPT
Rear garage window	N/A	N/A	N/A	*
Rear ladder	N/A	OPT	OPT	OPT
Rear screen door (roll-away screen door)	N/A	N/A	N/A	OPT
Recliner (DSL models)	N/A	N/A	OPT	OPT
Safety glass	OPT	OPT	OPT	OPT
Stare lights	N/A	N/A	OPT	OPT
Skylight in tub area	OPT	OPT	OPT	OPT
Slide out overhead cabinets	OPT	OPT	STD	STD
Slide tray for Storage Plus (some models)	OPT	OPT	OPT	OPT
Solid maple cabinet doors	N/A	OPT	STD	*
Solid maple raised panel cabinet doors in slide (DSL models)	N/A	N/A	OPT	*
Solid maple raised refer front	N/A	OPT	OPT	*
Solid maple slide fascia	N/A	N/A	OPT	*
Spare tire kit with carrier	OPT	OPT	OPT	OPT
Spray away exterior shower	OPT	OPT	OPT	OPT
Ultra heat pads -12 volt - all tanks	N/A	N/A	OPT	*
Washer dryer prep (see floorplans)	N/A	N/A	OPT	OPT
Water filter with spot	N/A	N/A	OPT	OPT

Vehicle loading- Every effort has been made to provide the greatest number of options for the recreation vehicle owner. Along with these choices comes the responsibility to manage the loads that are imposed by the choices that they remain within the manufacturer's specified chassis weight limits. Do not overload the recreation vehicle.

Dry weights based on standard features- Some optional equipment not included. Net carrying capacity (NCC) is determined by subtracting unloaded vehicle weight (UWV) from gross vehicle weight (GVWR) and includes fluids, options and cargo. Liquid capacities and weights are approximations only.

W/awning- This information is intended as a guide only. Weights of individual vehicles may vary.

2004 Optional Décors



Rocky Mountain Elk



The Rocky Mountain Elk Foundation

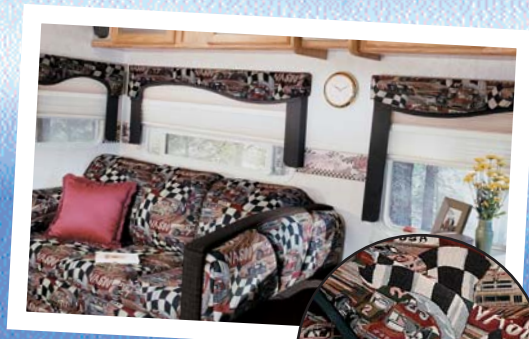
is an international wildlife habitat conservation organization with a mission of ensuring the future of elk, other wildlife and their habitat. Now in its 18th year, the Elk Foundation already has conserved or enhanced more than 3.8 million acres – an area 50 percent larger than Yellowstone National Park – of habitat for elk and other wildlife. The organization boasts a record 138,000 members, 115,000 supporters and 3,000 volunteers. Working together in an ambitious 5-year campaign called “Pass It On,” the Elk Foundation and its many supporters are on track to conserve an additional 2 million

acres by 2005, restore elk to long-empty native ranges, and ensure an elk country legacy for future generations. To learn more, visit www.elkfoundation.org or call 1-800- CALL ELK. Dutchmen makes a donation with every RME purchase – new owners receive a 1 year free membership to the Rocky Mountain Elk Foundation. Available in Lites, Classics and SRV's.

Richard Childress Racing Edition

RV owners love racing and so does Dutchmen. We are absolutely thrilled to be associated with Richard Childress Racing, one of the elite teams in stock car racing. RCR is the only team in history to earn championships in all three major stock car series.

Dutchmen's association with Richard Childress Racing has inspired the RCR edition. Available in Classic and SRV's, the RCR package is sure to be a winner with every racing fan. Order yours today!



35SRV with RCR interior



Richard Childress

The Industry's Best Warranty – By Far!

We are so confident in the design and construction of our products that they are covered by Thor's Limited Warranty.

Your warranty includes:

- One-year Bumper to Hitch Limited Warranty
- Two-year Structural and Appliance Limited Warranty and much more!

**see warranty statement for details.*

Product information, specifications, and photography in this brochure were as accurate as possible at time of printing. Photographs may contain some features that are optional on your vehicle. Since we continually strive to improve our products, actual products may differ. Prices and specifications are subject to change without notice. All capacities are approximate and dimensions are nominal. Some features shown are optional and may be different or unavailable in Canada.

Vehicles are designed for recreational use only and not intended for use as a primary residence.



This brochure is printed in part on recycled paper as part of Thor's corporate effort to minimize waste and conserve our natural resources. Providing safe, fuel-efficient recreational vehicles is Thor's way of further demonstrating our role as the industry leader in safeguarding our nation's environment.



THOR
AMERICA'S BEST RV VALUE

2164 Caragana Court • Goshen, IN 46526

574.534.1224 • Fax 574.533.3807

Service, Warranty and Parts 574.537.0700

www.dutchmen-rv.com

Budget RV Outlet of Buffalo
4817 Lake Ave.
Blasdell, NY 14219
www.budgetrvoutlet.com