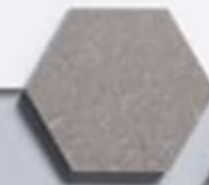


2019

BAY STAR/SPORT *gas motor coaches*



2019

BAY STAR/SPORT *gas motor coaches*



SAY HELLO *to* SUBSTANCE

While competitors may greet you with stick-on graphics, faux wood cabinetry, and a level of fit and finish that doesn't look or feel, well, finished, one look at Bay Star and Bay Star Sport is all it takes to discover that these are no ordinary gas-powered coaches. Engineered and assembled to the Newmar standard of quality, both models present a higher level of style, refinement, and versatility by way of 16 combined floor plan selections decorated by contrasting fabrics, carved wood accents, and more.

BAY STAR ELDORADO DÉCOR *(Pictured)*



SAY HELLO *to* SUBSTANCE

While competitors may greet you with stick-on graphics, faux wood cabinetry, and a level of fit and finish that doesn't look or feel, well, finished, one look at Bay Star and Bay Star Sport is all it takes to discover that these are no ordinary gas-powered coaches. Engineered and assembled to the Newmar standard of quality, both models present a higher level of style, refinement, and versatility by way of 16 combined floor plan selections decorated by contrasting fabrics, carved wood accents, and more.

BAY STAR ELDORADO DÉCOR *(Pictured)*







style with soul



Mustang full-paint Masterpiece™ finish

style with soul



Mustang full-paint Masterpiece™ finish

THE 2019 BAY STAR SPORT

FLOOR PLANS

6 available at 27, 28, 30, 32, and 33 feet

HIGHLIGHTS & AMENITIES

18-22,000 lb. Ford® F-53 chassis with hydraulic leveling jacks

Carefree of Colorado® power side awning and automatic entrance steps

Cummins® Onan generator, lit exterior storage, and frameless windows

Side and rearview cameras and power side mirrors with defrost

THE 2019 BAY STAR SPORT

FLOOR PLANS

6 available at 27, 28, 30, 32, and 33 feet

HIGHLIGHTS & AMENITIES

18-22,000 lb. Ford® F-53 chassis with hydraulic leveling jacks

Carefree of Colorado® power side awning and automatic entrance steps

Cummins® Onan generator, lit exterior storage, and frameless windows

Side and rearview cameras and power side mirrors with defrost

Space for all



Floor plan 3014 with Mustang décor | Astoria glazed maple wood cabinetry

Space for all



Floor plan 3014 with Mustang décor | Astoria glazed maple wood cabinetry



LOOKS MADE *for* LIFE

Demonstrating the power of simplicity, the 2019 Bay Star Sport brings a minimalist design approach to the forefront, with dark Mustang décor fabrics complemented by a light Astoria wood finish. Enlivened by standard LED lighting, Bay Star Sport acts as a natural host, thanks to the dropdown bunk bed or bunk sofa available on select floor plans. And with two in-coach Wi-Fi options available along with a Vizio® LED TV and DVD player, it's obvious that this is a coach purpose-built for the modern family.

74-INCH JACKKNIFE SOFA



LOOKS MADE *for* LIFE

Demonstrating the power of simplicity, the 2019 Bay Star Sport brings a minimalist design approach to the forefront, with dark Mustang décor fabrics complemented by a light Astoria wood finish. Enlivened by standard LED lighting, Bay Star Sport acts as a natural host, thanks to the dropdown bunk bed or bunk sofa available on select floor plans. And with two in-coach Wi-Fi options available along with a Vizio® LED TV and DVD player, it's obvious that this is a coach purpose-built for the modern family.

74-INCH JACKKNIFE SOFA

ASTORIA GLAZED - MAPLE WOOD CABINETS



Available 12 cu. ft. refrigerator

ASTORIA GLAZED - MAPLE WOOD CABINETS



Available 12 cu. ft. refrigerator

great taste all around

THE *right* INGREDIENTS

Bay Star Sport serves up a galley that's equal parts flavorful and accommodating, positioning a stainless steel double-bowl sink surrounded by a solid-surface countertop across from an available dinette booth. A chrome mosaic backsplash adds style, while glazed hardwood cabinet doors tout concealed hinges and come decorated with brushed nickel door and drawer hardware. What's more, an available four-door refrigerator offers plenty of room for leftovers.



great taste all around

THE *right* INGREDIENTS

Bay Star Sport serves up a galley that's equal parts flavorful and accommodating, positioning a stainless steel double-bowl sink surrounded by a solid-surface countertop across from an available dinette booth. A chrome mosaic backsplash adds style, while glazed hardwood cabinet doors tout concealed hinges and come decorated with brushed nickel door and drawer hardware. What's more, an available four-door refrigerator offers plenty of room for leftovers.



Take a look around



Travertine-patterned vinyl tile flooring

Take a look around



Travertine-patterned vinyl tile flooring



LOVE *the* JOURNEY

Modern technology and innovative breakthroughs make open-road travel in the 2019 Bay Star Sport a breeze. The cockpit features an available power-adjustable driver's seat and stowable table along with a standard passenger workstation. And with a Bluetooth®-compatible Sony® radio, custom-tuned JBL® speakers, and available Rand McNally® navigation, both entertainment and direction are easy to find. Choose floor plan 3014 and access an enclosed mid-ship bath led by an expansive 40" x 30" shower.

SOLID-SURFACE WOOD VANITY



LOVE *the* JOURNEY

Modern technology and innovative breakthroughs make open-road travel in the 2019 Bay Star Sport a breeze. The cockpit features an available power-adjustable driver's seat and stowable table along with a standard passenger workstation. And with a Bluetooth®-compatible Sony® radio, custom-tuned JBL® speakers, and available Rand McNally® navigation, both entertainment and direction are easy to find. Choose floor plan 3014 and access an enclosed mid-ship bath led by an expansive 40" x 30" shower.

SOLID-SURFACE WOOD VANITY

Take it all with you



BASK *in* THE GLOW

Make peaceful nights and sun-filled mornings a part of your everyday routine with Bay Star Sport, where each floor plan is enhanced by an extra-large bedroom window, Vizio® LED TV, and a redesigned wardrobe space that includes a large shirt closet and five mitered hardwood drawers. A standard queen-size bed is upgraded to a king on floor plan 3226, while character is added courtesy of layered window treatments and an upholstered headboard with rectangular padding.

Take it all with you



BASK *in* THE GLOW

Make peaceful nights and sun-filled mornings a part of your everyday routine with Bay Star Sport, where each floor plan is enhanced by an extra-large bedroom window, Vizio® LED TV, and a redesigned wardrobe space that includes a large shirt closet and five mitered hardwood drawers. A standard queen-size bed is upgraded to a king on floor plan 3226, while character is added courtesy of layered window treatments and an upholstered headboard with rectangular padding.



BACKLIT SLIDEOUT FASCIA



BACKLIT SLIDEOUT FASCIA

Ready for adventure



Ready for adventure





GO THERE *do that*

The 2019 Bay Star Sport is equipped to take you and your family far beyond the local campground, with an available 5.5 kW generator, standard hydraulic leveling jacks, and a generous allotment of well-lit basement storage space. And if you're planning to frequent cold-weather states, frameless windows can be upgraded to a new double-pane variety, while power side mirrors also include a defrost feature.



GO THERE *do that*

The 2019 Bay Star Sport is equipped to take you and your family far beyond the local campground, with an available 5.5 kW generator, standard hydraulic leveling jacks, and a generous allotment of well-lit basement storage space. And if you're planning to frequent cold-weather states, frameless windows can be upgraded to a new double-pane variety, while power side mirrors also include a defrost feature.

EXTERIOR *and* INTERIOR DÉCOR



MUSTANG EXTERIOR

Awning Color: Sierra Brown



MUSTANG INTERIOR

a. Furniture/ Fabric b. Carpet c. Counter Top



PALOMINO EXTERIOR

Awning Color: Black/Gray



PALOMINO INTERIOR

a. Furniture/ Fabric b. Carpet c. Counter Top

EXTERIOR *and* INTERIOR DÉCOR



MUSTANG EXTERIOR

Awning Color: Sierra Brown



MUSTANG INTERIOR

a. Furniture/ Fabric b. Carpet c. Counter Top



PALOMINO EXTERIOR

Awning Color: Black/Gray



PALOMINO INTERIOR

a. Furniture/ Fabric b. Carpet c. Counter Top

BAY STAR SPORT FLOOR PLANS



ASTORIA GLAZED MAPLE



CALYPSO GLAZED MAPLE



HARBOUR GLAZED MAPLE



Length: 27' 11"

2702

Length	27'11"
Width	101.5"
App. Overall Height	12'04"
Interior Width	95.5"
Interior Height	80"
Grey Tank	60 gal.
Sewage Tank	40 gal.
Water Tank	75 gal.
Propane Tank	25 gal.
Furnace	30,000 btu



Length: 28' 11"

2813

Length	28'11"
Width	101.5"
App. Overall Height	12'04"
Interior Width	95.5"
Interior Height	80"
Grey Tank	60 gal.
Sewage Tank	40 gal.
Water Tank	75 gal.
Propane Tank	25 gal.
Furnace	30,000 btu

BAY STAR SPORT FLOOR PLANS



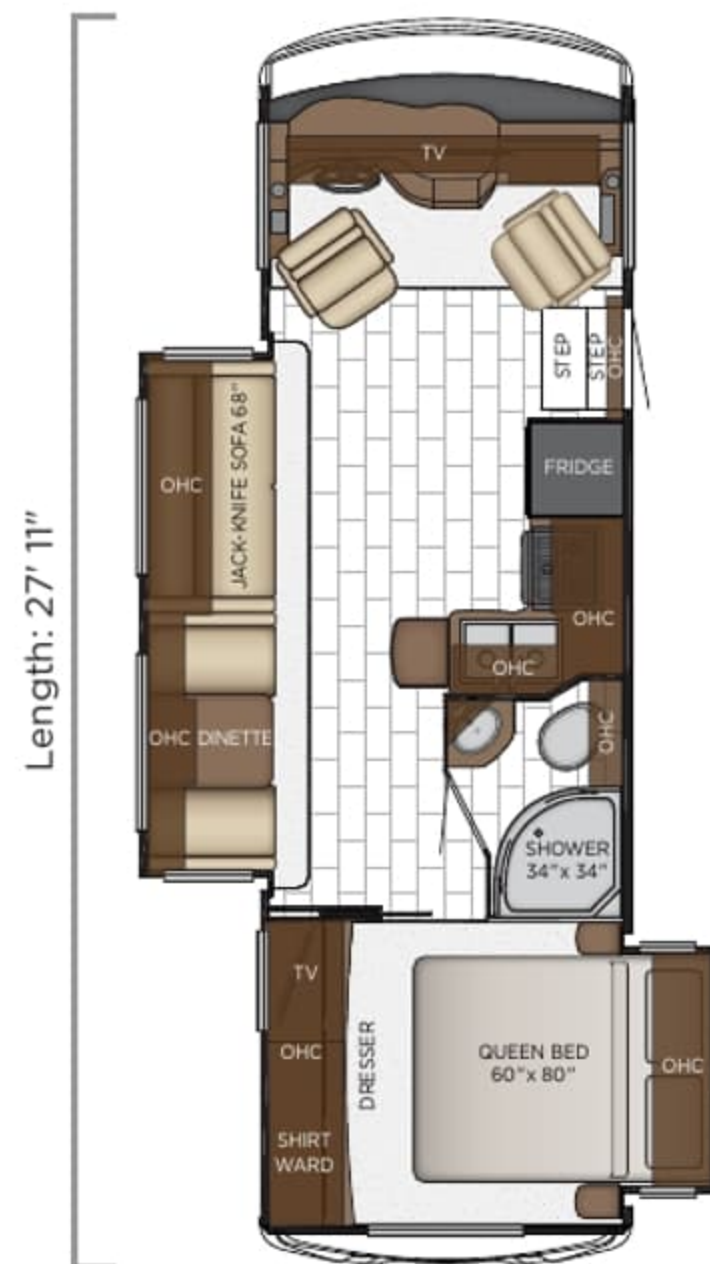
ASTORIA GLAZED MAPLE



CALYPSO GLAZED MAPLE



HARBOUR GLAZED MAPLE



Length: 27' 11"

2702

Length	27'11"
Width	101.5"
App. Overall Height	12'04"
Interior Width	95.5"
Interior Height	80"
Grey Tank	60 gal.
Sewage Tank	40 gal.
Water Tank	75 gal.
Propane Tank	25 gal.
Furnace	30,000 btu

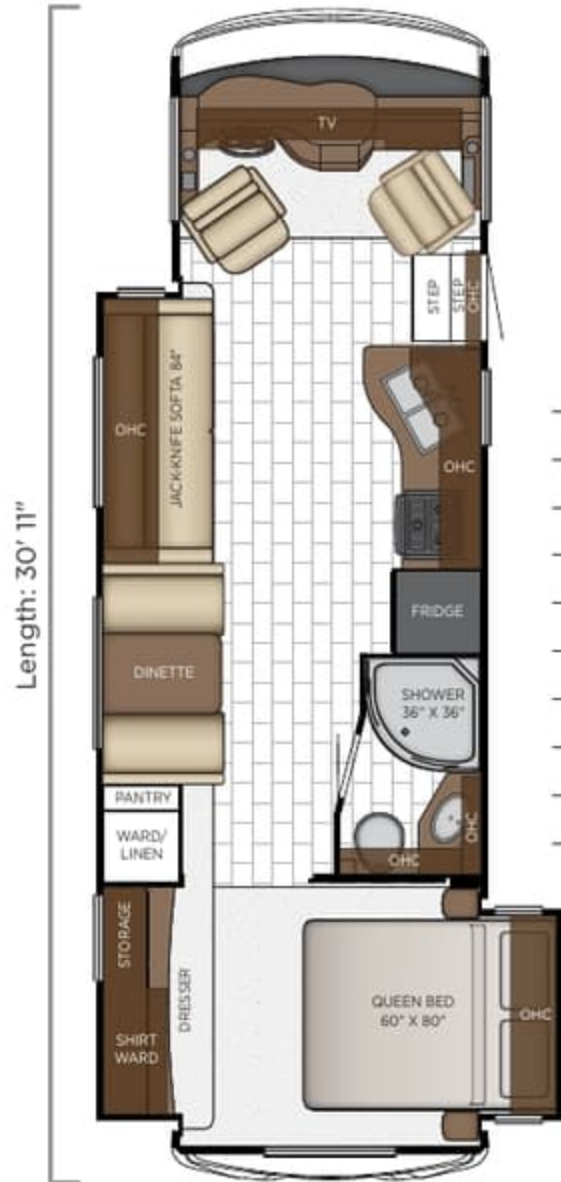


Length: 28' 11"

2813

Length	28'11"
Width	101.5"
App. Overall Height	12'04"
Interior Width	95.5"
Interior Height	80"
Grey Tank	60 gal.
Sewage Tank	40 gal.
Water Tank	75 gal.
Propane Tank	25 gal.
Furnace	30,000 btu

BAY STAR SPORT



3008

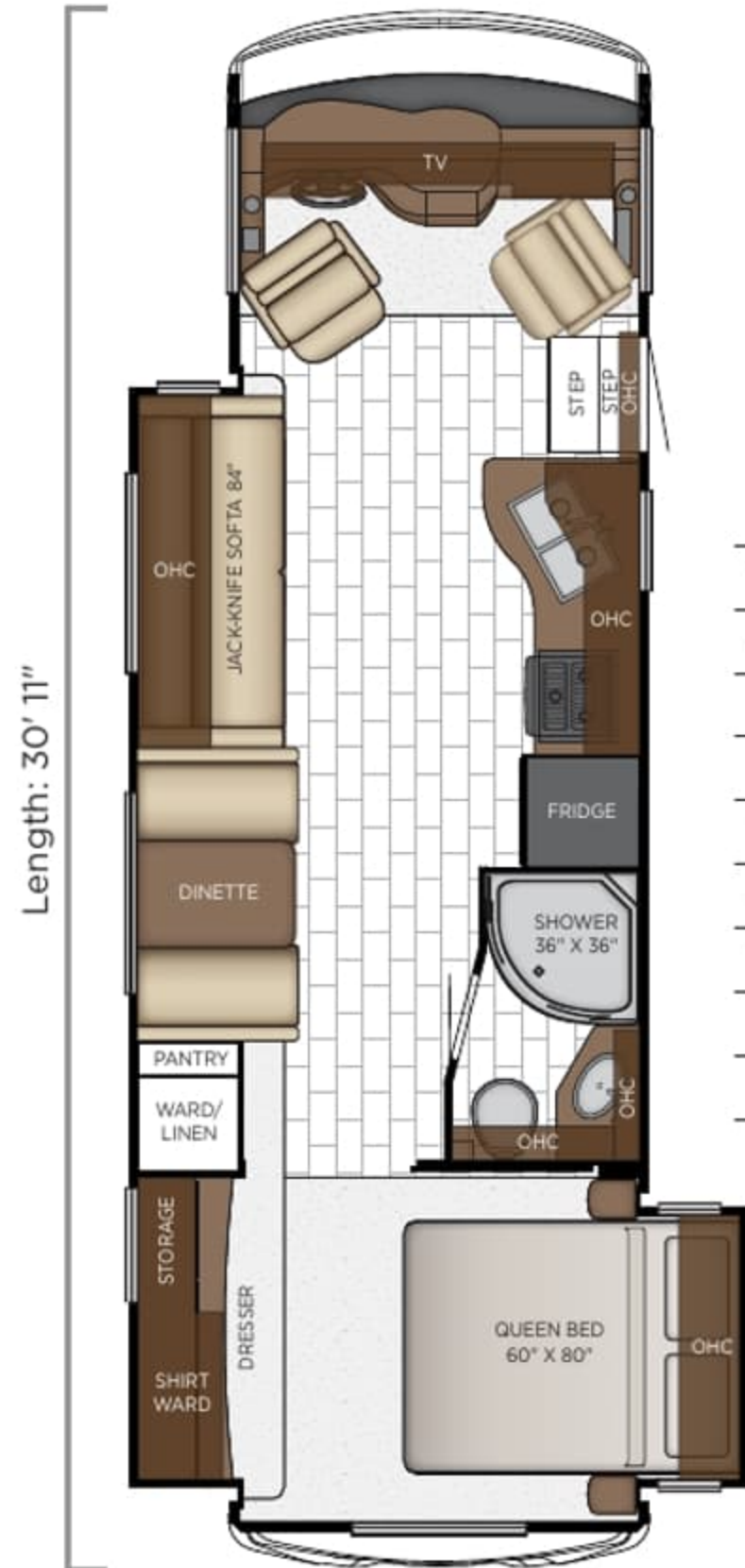
Length	30'11"
Width	101.5"
App. Overall Height	12'04"
Interior Width	95.5"
Interior Height	80"
Grey Tank	60 gal.
Sewage Tank	40 gal.
Water Tank	75 gal.
Propane Tank	25 gal.
Furnace	30,000 btu



3014

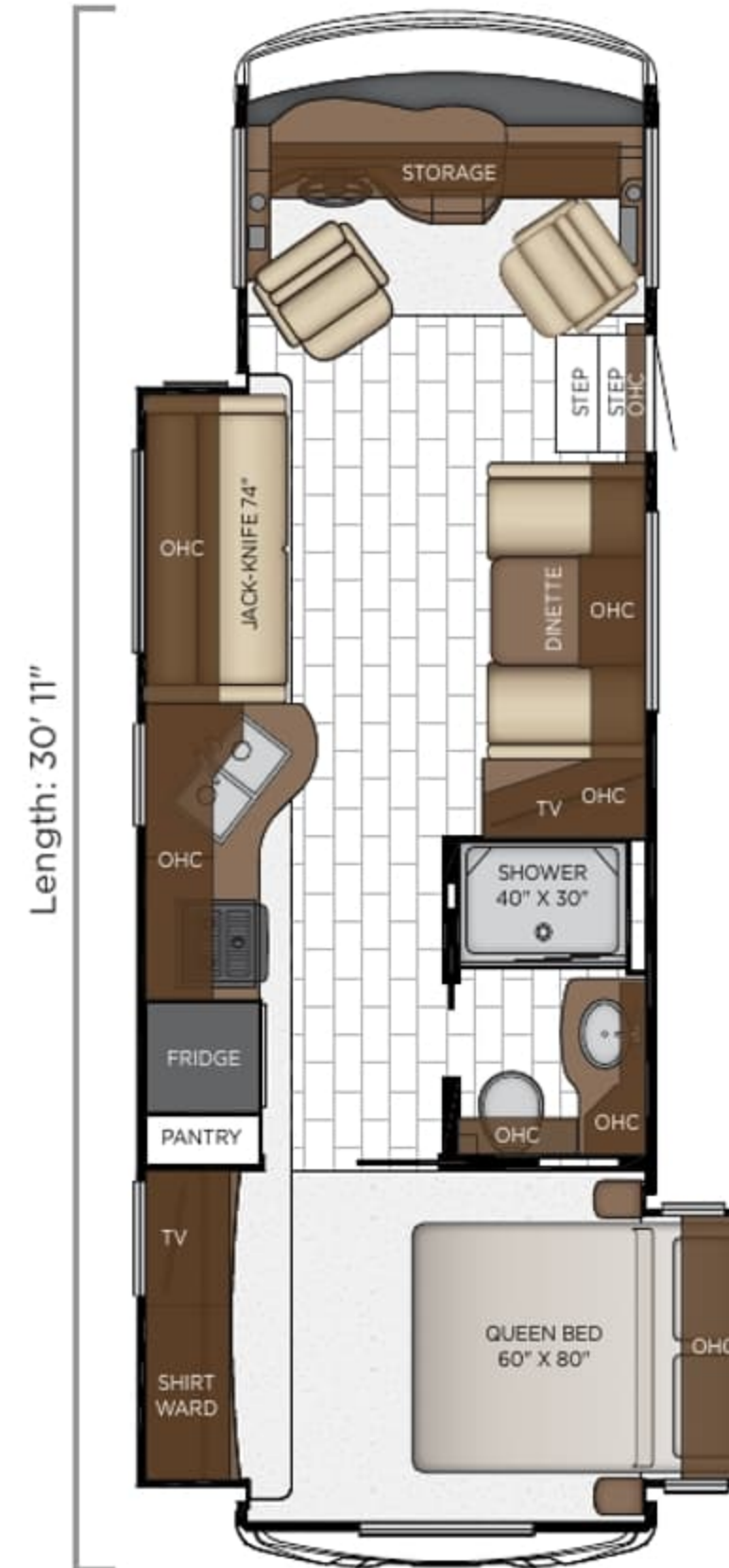
Length	30'11"
Width	101.5"
App. Overall Height	12'04"
Interior Width	95.5"
Interior Height	80"
Grey Tank	60 gal.
Sewage Tank	40 gal.
Water Tank	75 gal.
Propane Tank	25 gal.
Furnace	35,000 btu

BAY STAR SPORT



3008

Length	30'11"
Width	101.5"
App. Overall Height	12'04"
Interior Width	95.5"
Interior Height	80"
Grey Tank	60 gal.
Sewage Tank	40 gal.
Water Tank	75 gal.
Propane Tank	25 gal.
Furnace	30,000 btu



3014

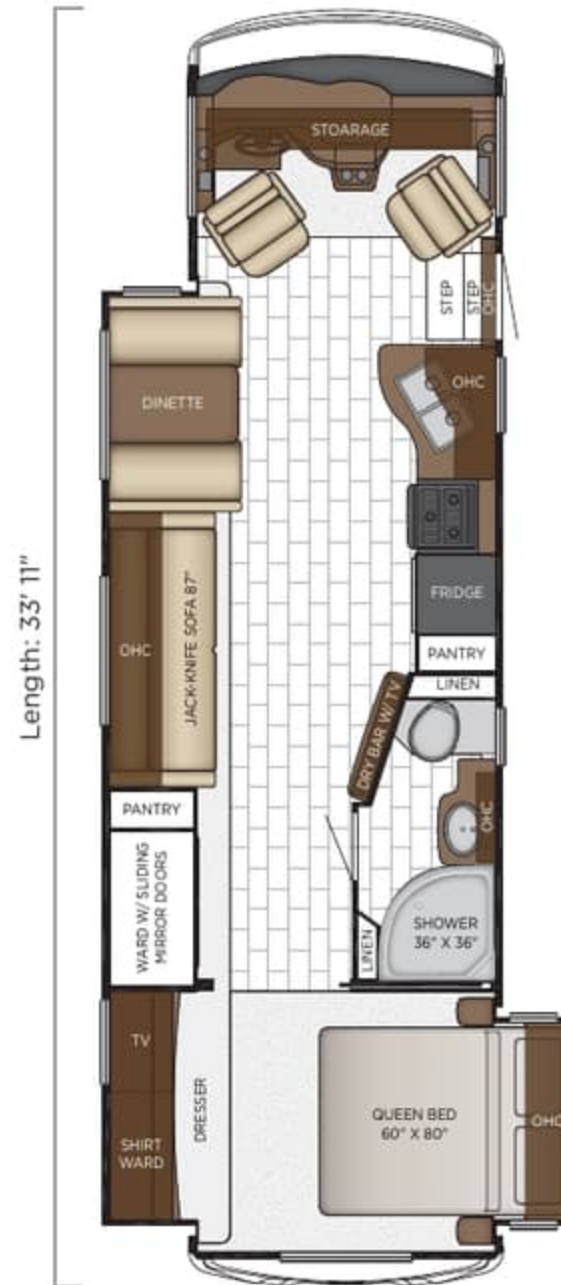
Length	30'11"
Width	101.5"
App. Overall Height	12'04"
Interior Width	95.5"
Interior Height	80"
Grey Tank	60 gal.
Sewage Tank	40 gal.
Water Tank	75 gal.
Propane Tank	25 gal.
Furnace	35,000 btu

FLOOR PLANS



3226

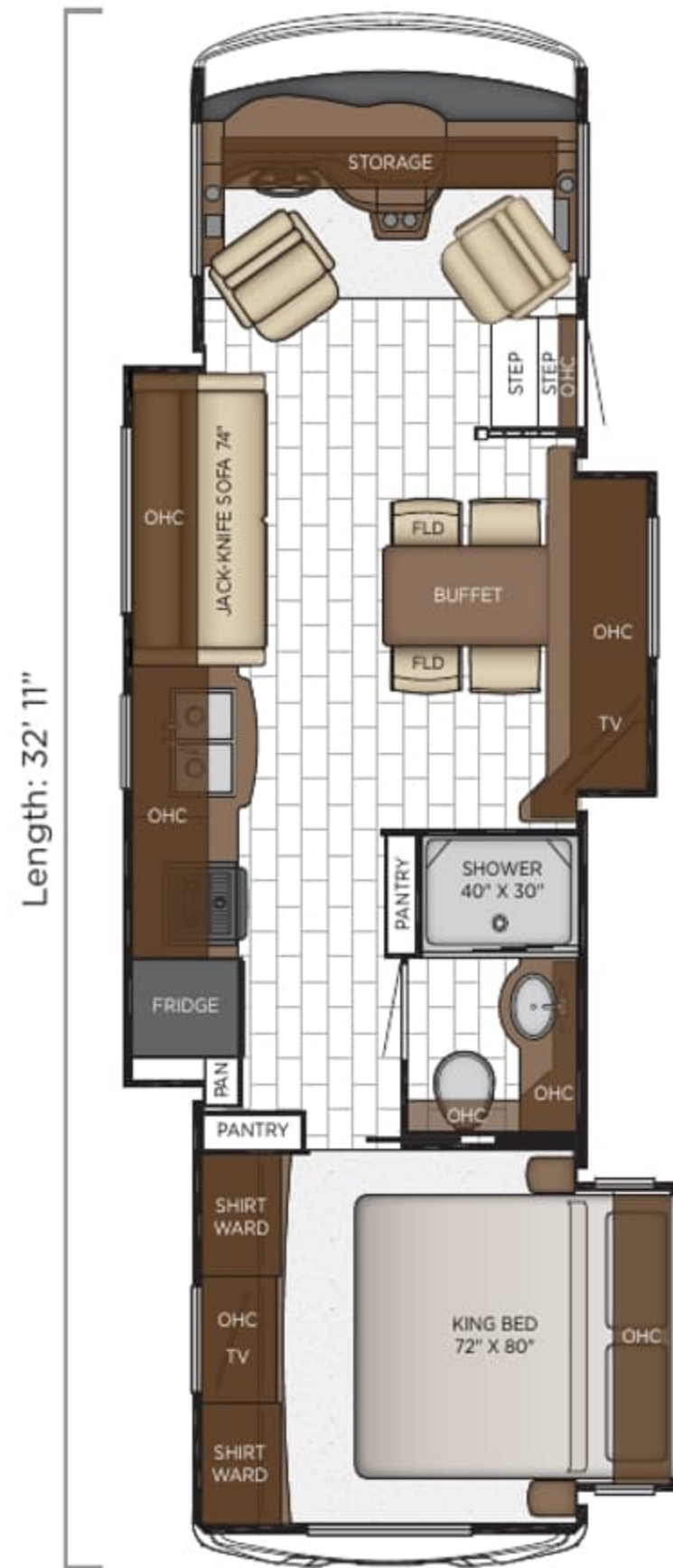
Length	32'11"
Width	101.5"
App. Overall Height	12'04"
Interior Width	95.5"
Interior Height	80"
Grey Tank	60 gal.
Sewage Tank	40 gal.
Water Tank	75 gal.
Propane Tank	25 gal.
Furnace	30,000 btu



3307

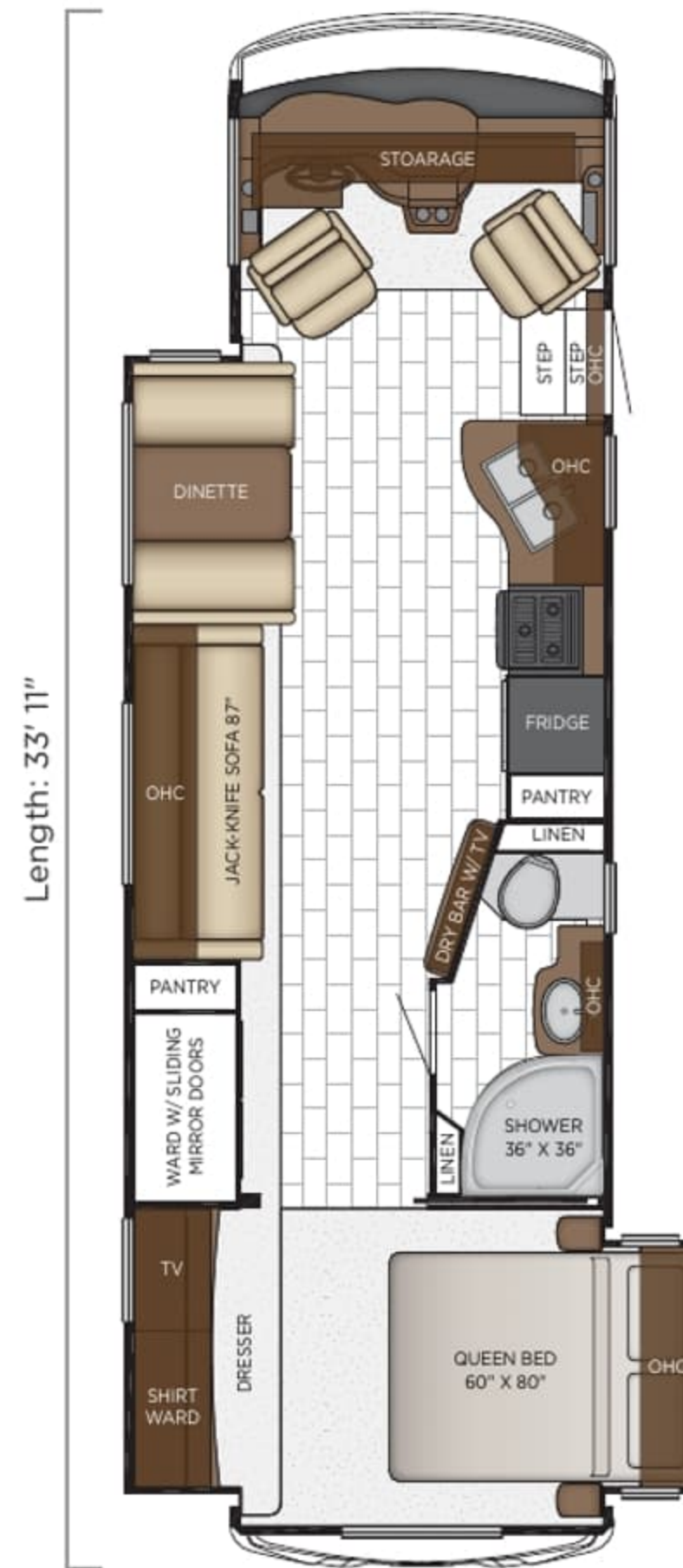
Length	33'11"
Width	101.5"
App. Overall Height	12'04"
Interior Width	95.5"
Interior Height	80"
Grey Tank	60 gal.
Sewage Tank	40 gal.
Water Tank	75 gal.
Propane Tank	25 gal.
Furnace	30,000 btu

FLOOR PLANS



3226

Length	32'11"
Width	101.5"
App. Overall Height	12'04"
Interior Width	95.5"
Interior Height	80"
Grey Tank	60 gal.
Sewage Tank	40 gal.
Water Tank	75 gal.
Propane Tank	25 gal.
Furnace	30,000 btu



3307

Length	33'11"
Width	101.5"
App. Overall Height	12'04"
Interior Width	95.5"
Interior Height	80"
Grey Tank	60 gal.
Sewage Tank	40 gal.
Water Tank	75 gal.
Propane Tank	25 gal.
Furnace	30,000 btu



EXTERIOR FEATURES

Exterior Masterpiece Full Painted Graphics with Clearcoat Finish

Dura Shield Protection on Front Cap

Lighted Exterior Storage Compartments

Automatic Step for Entrance Door

Convex Exterior Mirrors with Defrost & Remote Control

Rear Hitch for Towing Car

Assist Handle at Entrance Door

Undercoating

Mud Flaps

Hydraulic Leveling Jacks

OPTIONS

Rear Ladder

Flagpole Bracket

CONSTRUCTION FEATURES

BriteTEK™ Roof with Walkable Deck

Gelcoated Fiberglass Exterior Sidewalls, Front & Rear Caps

Aluminum-Frame Sidewalls & Roof Construction, on 16" Center

5/8" Foam Insulation Laminated in Sidewalls & Ceiling

Automatic Mechanical Lock Arms on Bedroom Slideout Room - Scissor Style - 2813 Only



WINDOWS, AWNINGS & VENTS

One Piece Tinted Windshield

Frameless Single Pane Tinted Safety Glass Windows

Power Vent in Kitchen & Bathroom

Skylight Above Shower

Carefree Travel'r Side Awning

Rear Window*

OPTIONS

Slideout Covers

Frameless Double-Pane Tinted Safety Glass Windows

Egress Door with Ladder System*

CHASSIS FEATURES

Ford® F-53 Chassis 18,000 lb. on 27' Floor Plans

Ford® F-53 Chassis 20,500 lb. on 28'-32' Floor Plans

Ford® F-53 Chassis 22,000 lb. on 33' Floor Plans

Cruise Control

Tilt Steering Wheel

Stainless Steel Wheel Simulators

Anti-Lock Braking System

AIR CONDITIONING & HEATING

13.5M Brisk® Central Air Conditioner

Dash Heater and Air Conditioner

Propane Gas Furnace with Ducted Heat

Driver & Passenger Overhead Dash Fans

OPTIONS

15.0M Penguin™ Heat Pump Central Air Conditioner.

Two 13.5 Penguin Heat Pump A/C, 5.5 Onan Generator, 50 Amp Electrical Service with Energy Management System*

ELECTRICAL FEATURES

4.0 kW Cummins Onan® Generator with Remote Switch and Automatic Changeover

30 Amp Electrical Service with Flexible Cord and Automatic Transfer Switch

Two 12 Volt House Batteries

Manual Battery Disconnect Switch for House Battery

12 Volt Auxiliary Receptacle on Dashboard

45 Amp Converter

Daytime Running Lights

Emergency Engine Start Switch

LED Interior Lighting

Manually Operated Hold-To-Run Slideout Switch

Cable TV Connection

USB Outlet at Dash for Driver Use

Drain Lift Pump with 1000 Inverter*

OPTIONS

1000 Watt Inverter Run to TV's*



EXTERIOR FEATURES

Exterior Masterpiece Full Painted Graphics with Clearcoat Finish

Dura Shield Protection on Front Cap

Lighted Exterior Storage Compartments

Automatic Step for Entrance Door

Convex Exterior Mirrors with Defrost & Remote Control

Rear Hitch for Towing Car

Assist Handle at Entrance Door

Undercoating

Mud Flaps

Hydraulic Leveling Jacks

OPTIONS

Rear Ladder

Flagpole Bracket

CONSTRUCTION FEATURES

BriteTEK™ Roof with Walkable Deck

Gelcoated Fiberglass Exterior Sidewalls, Front & Rear Caps

Aluminum-Frame Sidewalls & Roof Construction, on 16" Center

5/8" Foam Insulation Laminated in Sidewalls & Ceiling

Automatic Mechanical Lock Arms on Bedroom Slideout Room - Scissor Style - 2813 Only

WINDOWS, AWNINGS & VENTS

One Piece Tinted Windshield

Frameless Single Pane Tinted Safety Glass Windows

Power Vent in Kitchen & Bathroom

Skylight Above Shower

Carefree Travel'r Side Awning

Rear Window*

OPTIONS

Slideout Covers

Frameless Double-Pane Tinted Safety Glass Windows

Egress Door with Ladder System*

CHASSIS FEATURES

Ford® F-53 Chassis 18,000 lb. on 27' Floor Plans

Ford® F-53 Chassis 20,500 lb. on 28'-32' Floor Plans

Ford® F-53 Chassis 22,000 lb. on 33' Floor Plans

Cruise Control

Tilt Steering Wheel

Stainless Steel Wheel Simulators

Anti-Lock Braking System

AIR CONDITIONING & HEATING

13.5M Brisk® Central Air Conditioner

Dash Heater and Air Conditioner

Propane Gas Furnace with Ducted Heat

Driver & Passenger Overhead Dash Fans

OPTIONS

15.0M Penguin™ Heat Pump Central Air Conditioner

Two 13.5 Penguin Heat Pump A/C, 5.5 Onan Generator, 50 Amp Electrical Service with Energy Management System*

ELECTRICAL FEATURES

4.0 kW Cummins Onan® Generator with Remote Switch and Automatic Changeover

30 Amp Electrical Service with Flexible Cord and Automatic Transfer Switch

Two 12 Volt House Batteries

Manual Battery Disconnect Switch for House Battery

12 Volt Auxiliary Receptacle on Dashboard

45 Amp Converter

Daytime Running Lights

Emergency Engine Start Switch

LED Interior Lighting

Manually Operated Hold-To-Run Slideout Switch

Cable TV Connection

USB Outlet at Dash for Driver Use

Drain Lift Pump with 1000 Inverter*

OPTIONS

1000 Watt Inverter Run to TV's*



PLUMBING & BATH FEATURES

Demand Water System
Sewage Holding-Tank Rinse
Water Heater Bypass System
Dometic® 310 China Bowl Stool
ABS Shower Surround with Shower Door
Systems Monitor Panel

INTERIOR FEATURES

Vinyl Ceiling Panels
Pleated Window Shades
Decorative Wall Art*
Mini Blinds in Kitchen and Bathroom Windows
Vinyl Floor in Kitchen, Living Area and Bathroom
Carpeting in Bedroom and on Slideout Floors
Interior Assist Handle at Main Entrance Door
Quilted Bedspread and Accent Pillow
Inlaid Six Panel Design Interior Passage Swing Doors
Auto-Motion Power Shade at Windshield & Manual Shades at Driver & Passenger Side Windows
Dash Panel Color Coordinated ABS
Integrated Window Blind System on Entry Door

CABINETS & FURNITURE

Calypso Glazed Maple Mitered Designer Cabinet Doors-Matte Finish
Concealed Hinges on Cabinet Doors
Drawers with Full Extension Ball Bearing Guides
Polished Solid Surface Countertop in Kitchen with Stainless Steel Sink
Solid Surface Countertops in Bathroom and Bedroom
Flexsteel® Deluxe Leather Sofa and Front Seats
Passenger Seat Work Station

Lifts on Bed Top
Smooth-Top Mattress
OPTIONS
Astoria Glazed Maple Mitered Designer Cabinets-Matte Finish
Harbour Glazed Maple Mitered Designer Cabinets-Matte Finish
Drop Down Bunk Bed Over Driver/Passenger Seats with Electric Release Latches and Bunk Ladder*
Plush Pillow Top Mattress
Folding Cockpit Table
Side Folding Hide-A-Bed Sofa 87"*
Fold-N-Tumble Sofa*
Buffet Dinette*
Combo Buffet Dinette, Two Fixed/Two Folding Chairs*
Six Way Power Driver Seat
King Bed* (2813 Only)

APPLIANCES

Raised Panel Refrigerator Door Insert
Three-Burner Range with Oven
Range Hood with Light and Fan*
Microwave
Norcold® 8 Cf. Refrigerator
6 gal. Gas/Electric Water Heater with Electric Ignition
OPTIONS
Norcold 10 Cf. Refrigerator with Icemaker on 2813 Floor Plan
Norcold 12 Cf. 4-Door Refrigerator with Icemaker and Wood Panel Inserts*
Icemaker Added to Standard Norcold Refrigerator

AUDIO, VIDEO & ACCESSORIES

LED TV in Living Area (TV sizes vary per Floor Plan)
32" LED TV in Bedroom
Dash Radio/CD Player with Harman/JBL 180 Watt Sound System - with Bluetooth
DVD Player with Coax Switcher
Rearview Color Monitor System with Audio
Side-view Cameras Displayed onto Rearview Monitor Screen
Winegard Digital Crank-Up TV Antenna
TV Jack and 110 Volt Recept in Door Side Exterior Storage Compartment
Satellite Dish Prep on Roof
10 Bc Fire Extinguisher, Smoke Detector, Propane and Carbon Monoxide Detector
OPTIONS
WiFiRanger Sky3 Pack Router
Winegard Cellular In Motion Wifi
Winegard Cellular In Motion Wifi Prep WiFi Ranger SkyPro Cellular Router
SiriusXM® Radio Capability with Antenna (Does Not Include Monthly Subscription*)
Xite Dash Radio, 6" Monitor with Rand McNally Navigation

*Check with dealership on floor plan availability.

The content in our literature depicts and describes products that are subject to change. For the most recent images and information, please visit NewmarCorp.com.



PLUMBING & BATH FEATURES

Demand Water System
Sewage Holding-Tank Rinse
Water Heater Bypass System
Dometic® 310 China Bowl Stool
ABS Shower Surround with Shower Door
Systems Monitor Panel

INTERIOR FEATURES

Vinyl Ceiling Panels
Pleated Window Shades
Decorative Wall Art*
Mini Blinds in Kitchen and Bathroom Windows
Vinyl Floor in Kitchen, Living Area and Bathroom
Carpeting in Bedroom and on Slideout Floors
Interior Assist Handle at Main Entrance Door
Quilted Bedspread and Accent Pillow
Inlaid Six Panel Design Interior Passage Swing Doors
Auto-Motion Power Shade at Windshield & Manual Shades at Driver & Passenger Side Windows
Dash Panel Color Coordinated ABS
Integrated Window Blind System on Entry Door

CABINETS & FURNITURE

Calypso Glazed Maple Mitered Designer Cabinet Doors-Matte Finish
Concealed Hinges on Cabinet Doors
Drawers with Full Extension Ball Bearing Guides
Polished Solid Surface Countertop in Kitchen with Stainless Steel Sink
Solid Surface Countertops in Bathroom and Bedroom
Flexsteel® Deluxe Leather Sofa and Front Seats
Passenger Seat Work Station

Lifts on Bed Top
Smooth-Top Mattress
OPTIONS
Astoria Glazed Maple Mitered Designer Cabinets-Matte Finish
Harbour Glazed Maple Mitered Designer Cabinets-Matte Finish
Drop Down Bunk Bed Over Driver/Passenger Seats with Electric Release Latches and Bunk Ladder*
Plush Pillow Top Mattress
Folding Cockpit Table
Side Folding Hide-A-Bed Sofa 87"*
Fold-N-Tumble Sofa*
Buffet Dinette*
Combo Buffet Dinette, Two Fixed/Two Folding Chairs*
Six Way Power Driver Seat
King Bed* (2813 Only)

APPLIANCES

Raised Panel Refrigerator Door Insert
Three-Burner Range with Oven
Range Hood with Light and Fan*
Microwave
Norcold® 8 Cf. Refrigerator
6 gal. Gas/Electric Water Heater with Electric Ignition
OPTIONS
Norcold 10 Cf. Refrigerator with Icemaker on 2813 Floor Plan
Norcold 12 Cf. 4-Door Refrigerator with Icemaker and Wood Panel Inserts*
Icemaker Added to Standard Norcold Refrigerator

AUDIO, VIDEO & ACCESSORIES

LED TV in Living Area (TV sizes vary per Floor Plan)
32" LED TV in Bedroom
Dash Radio/CD Player with Harman/JBL 180 Watt Sound System - with Bluetooth
DVD Player with Coax Switcher
Rearview Color Monitor System with Audio
Side-view Cameras Displayed onto Rearview Monitor Screen
Winegard Digital Crank-Up TV Antenna
TV Jack and 110 Volt Recept in Door Side Exterior Storage Compartment
Satellite Dish Prep on Roof
10 Bc Fire Extinguisher, Smoke Detector, Propane and Carbon Monoxide Detector
OPTIONS
WiFiRanger Sky3 Pack Router
Winegard Cellular In Motion Wifi
Winegard Cellular In Motion Wifi Prep WiFi Ranger SkyPro Cellular Router
SiriusXM® Radio Capability with Antenna (Does Not Include Monthly Subscription*)
Xite Dash Radio, 6" Monitor with Rand McNally Navigation

***Check with dealership on floor plan availability.**

The content in our literature depicts and describes products that are subject to change. For the most recent images and information, please visit NewmarCorp.com.

The details matter



Eldorado full-paint Masterpiece™ finish

The details matter



Eldorado full-paint Masterpiece™ finish

THE 2019 BAY STAR

FLOOR PLANS

10 available at 30, 31, 32, 34, and 36 feet

HIGHLIGHTS & AMENITIES

22-24,000 lb. Ford® F-53 chassis with 320-horsepower gas engine

Bath and a half and full-wall slide floor plans available

50-amp service, 5.5 kW generator, and energy management system

Stainless steel outdoor kitchen available on select floor plans

THE 2019 BAY STAR

FLOOR PLANS

10 available at 30, 31, 32, 34, and 36 feet

HIGHLIGHTS & AMENITIES

22-24,000 lb. Ford® F-53 chassis with 320-horsepower gas engine

Bath and a half and full-wall slide floor plans available

50-amp service, 5.5 kW generator, and energy management system

Stainless steel outdoor kitchen available on select floor plans

Everything you want



Floor plan 3408 with Eldorado décor

Everything you want



Floor plan 3408 with Eldorado décor



WIDENING *the* GAP

With a modern character derived from its chic décor and carefully chosen design elements, looks alone distinguish the 2019 Bay Star. But it's the unexpected extras that further separate Bay Star from its contemporaries. Take floor plan 3408 for example, which grants you residential amenities like a Flexsteel® Hide-A-Bed sofa with a pair of storage ottomans, a retractable Vizio® LED TV, and a dry bar with china cabinet. In addition, select floor plans offer a bunk sofa or set of plush recliner chairs.

AVAILABLE IN-COACH WI-FI



WIDENING *the* GAP

With a modern character derived from its chic décor and carefully chosen design elements, looks alone distinguish the 2019 Bay Star. But it's the unexpected extras that further separate Bay Star from its contemporaries. Take floor plan 3408 for example, which grants you residential amenities like a Flexsteel® Hide-A-Bed sofa with a pair of storage ottomans, a retractable Vizio® LED TV, and a dry bar with china cabinet. In addition, select floor plans offer a bunk sofa or set of plush recliner chairs.

AVAILABLE IN-COACH WI-FI

MITERED CABINET DOORS



Calypso glazed maple hardwood cabinetry

MITERED CABINET DOORS



Calypso glazed maple hardwood cabinetry

prepare to enjoy

A delectable
ENSEMBLE

Whether it's a family dinner, a quiet breakfast, or a quick snack, there's no better place to start than the Bay Star kitchen, and perhaps nowhere better to eat and enjoy than the available buffet dinette. Stunning handmade cabinetry comes in one of three glazed finishes, and a new recessed three-burner range stays hidden beneath a solid-surface cover. Stainless steel complements a standard Whirlpool® convection microwave and double-bowl sink, while floor plan 3408 includes a pantry with full-length shelves.



prepare to enjoy

A delectable **ENSEMBLE**

Whether it's a family dinner, a quiet breakfast, or a quick snack, there's no better place to start than the Bay Star kitchen, and perhaps nowhere better to eat and enjoy than the available buffet dinette. Stunning handmade cabinetry comes in one of three glazed finishes, and a new recessed three-burner range stays hidden beneath a solid-surface cover. Stainless steel complements a standard Whirlpool® convection microwave and double-bowl sink, while floor plan 3408 includes a pantry with full-length shelves.



See the possibilities



Available vinyl tile flooring

See the possibilities



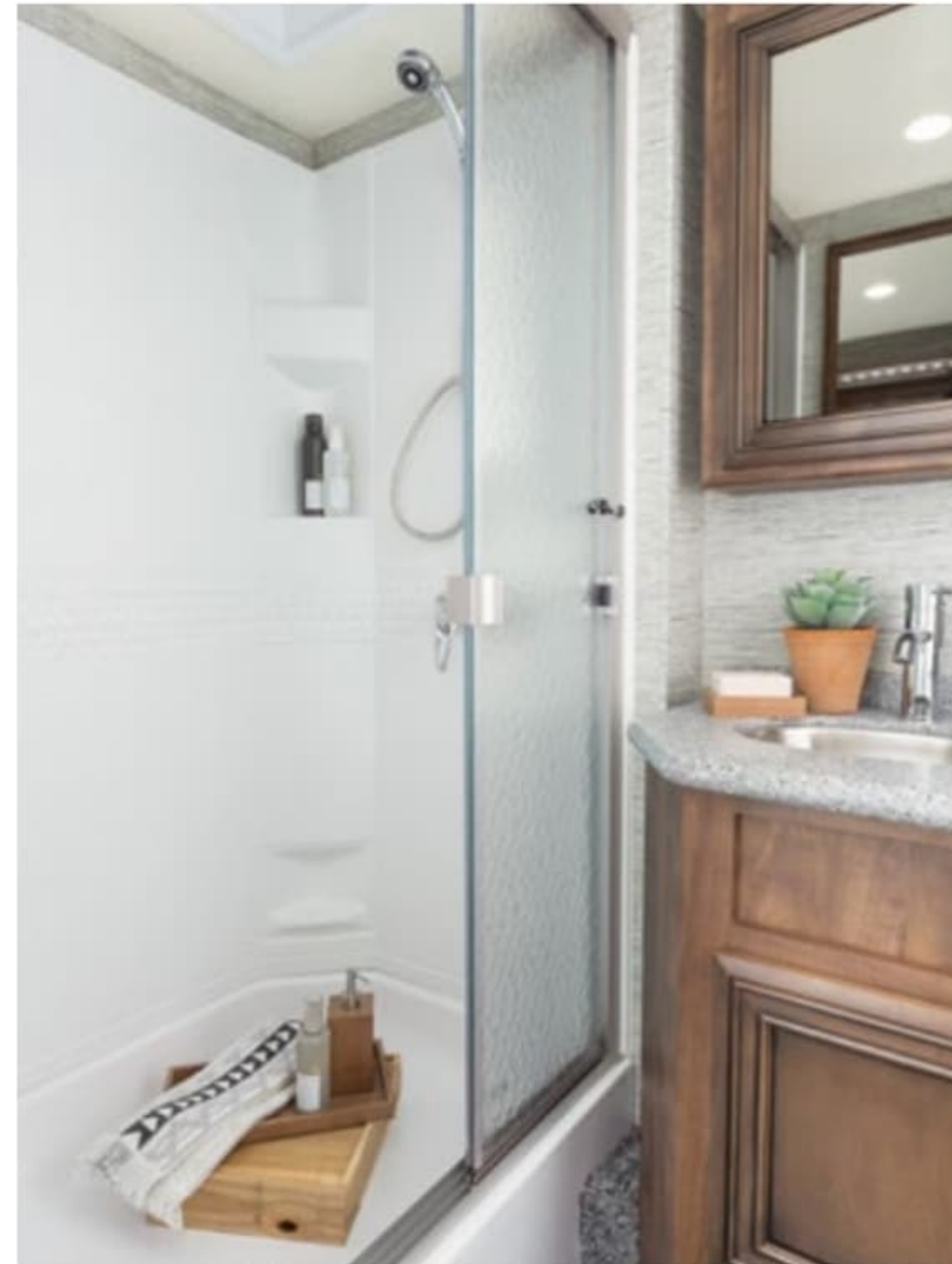
Available vinyl tile flooring



MORE WAYS to ROLL

Choosing your perfect motorhome is all about having options. Searching for in-coach entertainment? A Blu-ray player, overhead-mounted LED TV, and a Bose® Solo 5 soundbar can all be had. And in the master bath, a new 40"x30" sliding door shower is available too. Of course, Bay Star includes plenty of standard features, starting with rear and side-view cameras, JBL® cockpit audio, a power-adjustable driver's seat, and a passenger-seat footrest and workstation.

MEDICINE AND LINEN CABINETS



MORE WAYS to ROLL

Choosing your perfect motorhome is all about having options. Searching for in-coach entertainment? A Blu-ray player, overhead-mounted LED TV, and a Bose® Solo 5 soundbar can all be had. And in the master bath, a new 40"x30" sliding door shower is available too. Of course, Bay Star includes plenty of standard features, starting with rear and side-view cameras, JBL® cockpit audio, a power-adjustable driver's seat, and a passenger-seat footrest and workstation.

MEDICINE AND LINEN CABINETS

Bring it all with you



OUTFITTED to IMPRESS

Not big on packing light? Several 2019 Bay Star floor plans house both rear-wall and shirt wardrobe spaces, and all include ample drawer and cabinet space. And to keep all of your favorites looking new, skip the laundromat and spring for the available Whirlpool® stacked washer and dryer. And let's not forget about rest and relaxation, as Bay Star presents you with both king and queen bed arrangements along with a plush pillow top mattress and an in-room LED TV.

Bring it all with you



OUTFITTED *to* IMPRESS

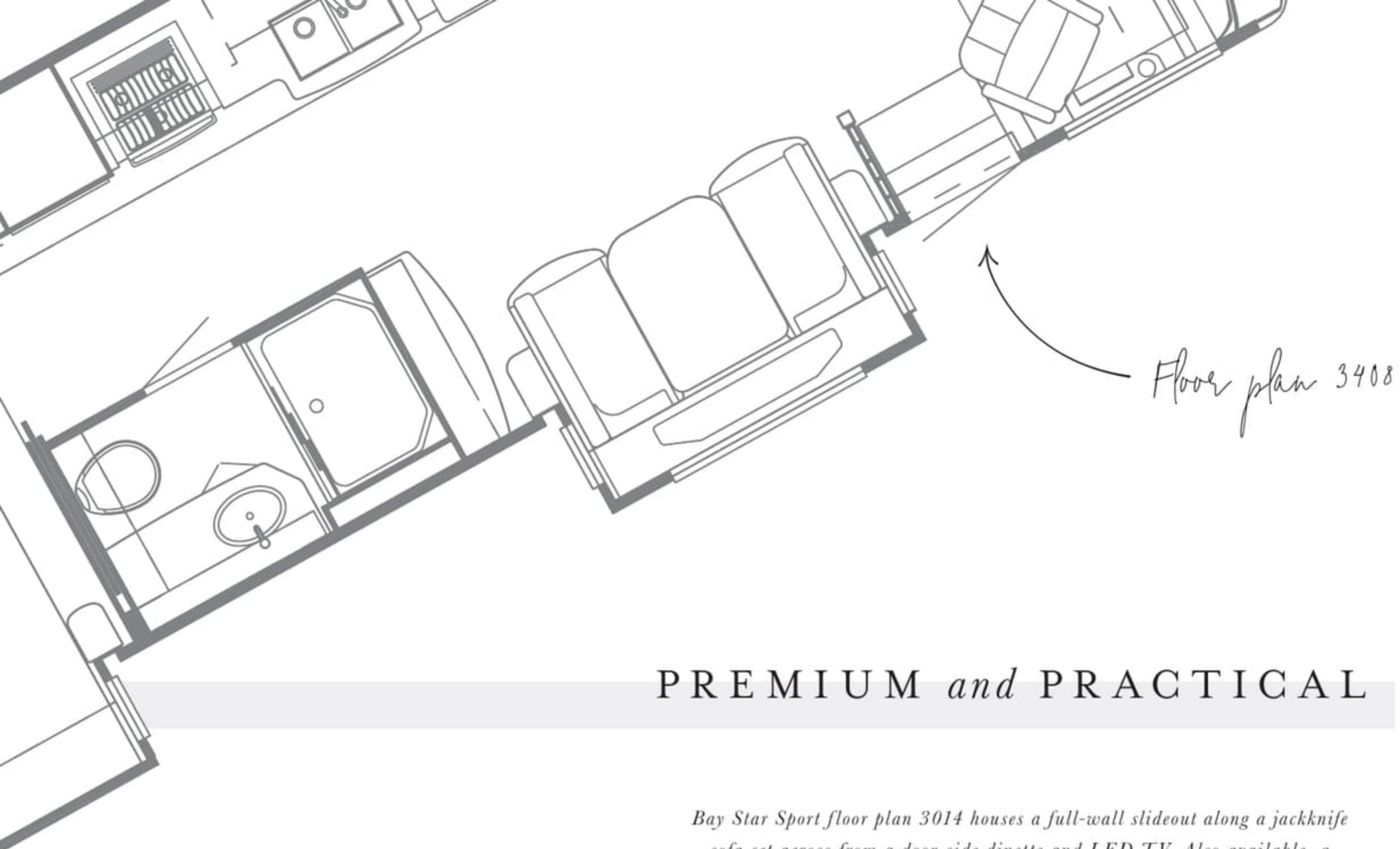
Not big on packing light? Several 2019 Bay Star floor plans house both rear-wall and shirt wardrobe spaces, and all include ample drawer and cabinet space. And to keep all of your favorites looking new, skip the laundromat and spring for the available Whirlpool® stacked washer and dryer. And let's not forget about rest and relaxation, as Bay Star presents you with both king and queen bed arrangements along with a plush pillow top mattress and an in-room LED TV.



DUAL NIGHTSTANDS



DUAL NIGHTSTANDS



PREMIUM *and* PRACTICAL

Bay Star Sport floor plan 3014 houses a full-wall slideout along a jackknife sofa set across from a door-side dinette and LED TV. Also available, a dropdown bunk bed with an electric release hatch is accessible by way of an easy-to-use ladder. New for 2019, Bay Star floor plan 3408 boasts three slideouts, including a full-wall slide made possible by a 24,000 lb. Ford® chassis. If it's storage you need, 3408 delivers by way of a patio-side dinette with pull-out drawers, a large pantry and spacious china cabinet.



Floor plan 3408

PREMIUM *and* PRACTICAL

Bay Star Sport floor plan 3014 houses a full-wall slideout along a jackknife sofa set across from a door-side dinette and LED TV. Also available, a dropdown bunk bed with an electric release hatch is accessible by way of an easy-to-use ladder. New for 2019, Bay Star floor plan 3408 boasts three slideouts, including a full-wall slide made possible by a 24,000 lb. Ford® chassis. If it's storage you need, 3408 delivers by way of a patio-side dinette with pull-out drawers, a large pantry and spacious china cabinet.

SLEEK *and* SOPHISTICATED

Bursting with cosmopolitan influence, Eldorado décor aligns textures formed using diamond and star shapes with light, uncluttered base fabrics to create a clean, modern design with ample dimension. The result is a soft, open space that is able to maintain a sharp, detailed look and feel using elements such as black front seat accents, nailhead trim, and a mosaic kitchen backsplash.

Eldorado décor



SLEEK *and* SOPHISTICATED

Bursting with cosmopolitan influence, Eldorado décor aligns textures formed using diamond and star shapes with light, uncluttered base fabrics to create a clean, modern design with ample dimension. The result is a soft, open space that is able to maintain a sharp, detailed look and feel using elements such as black front seat accents, nailhead trim, and a mosaic kitchen backsplash.

Eldorado décor →



EXTERIOR *and* INTERIOR DÉCOR



ELDORADO EXTERIOR

Awning Color: Charcoal Tweed



ELDORADO INTERIOR

a. Furniture/ Fabric b. Carpet c. Counter Top



WHITECAP EXTERIOR

Awning Color: Linen Tweed



WHITECAP INTERIOR

a. Furniture/ Fabric b. Carpet c. Counter Top

EXTERIOR *and* INTERIOR DÉCOR



ELDORADO EXTERIOR

Awning Color: Charcoal Tweed



ELDORADO INTERIOR

a. Furniture/ Fabric b. Carpet c. Counter Top



WHITECAP EXTERIOR

Awning Color: Linen Tweed



WHITECAP INTERIOR

a. Furniture/ Fabric b. Carpet c. Counter Top

LUXURY VINYL PLANK FLOORING



ASTORIA GLAZED
MAPLE FLOORING



CALYPSO GLAZED
MAPLE FLOORING



HARBOUR GLAZED
MAPLE FLOORING



ASTORIA GLAZED MAPLE



CALYPSO GLAZED MAPLE



HARBOUR GLAZED MAPLE

LUXURY VINYL PLANK FLOORING



ASTORIA GLAZED
MAPLE FLOORING



CALYPSO GLAZED
MAPLE FLOORING



HARBOUR GLAZED
MAPLE FLOORING



ASTORIA GLAZED MAPLE



CALYPSO GLAZED MAPLE



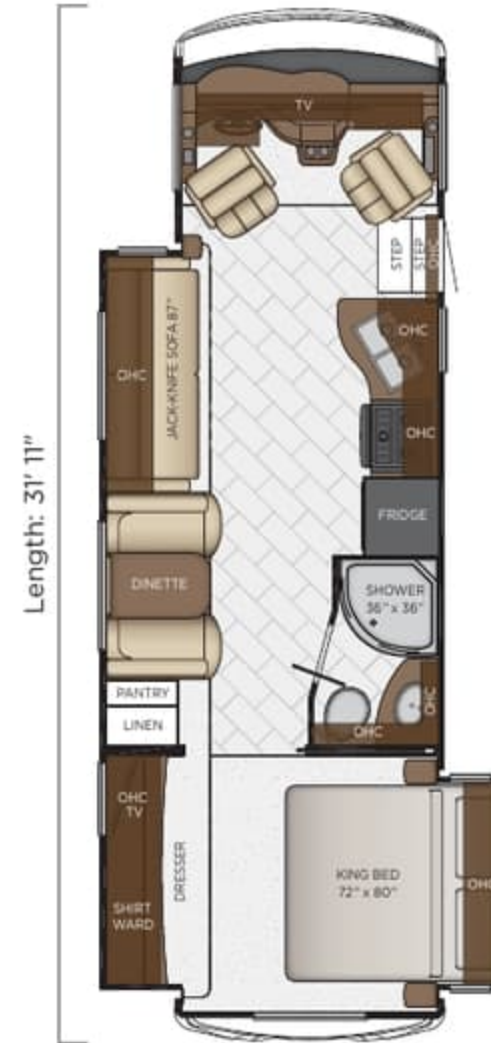
HARBOUR GLAZED MAPLE

BAY STAR



3014

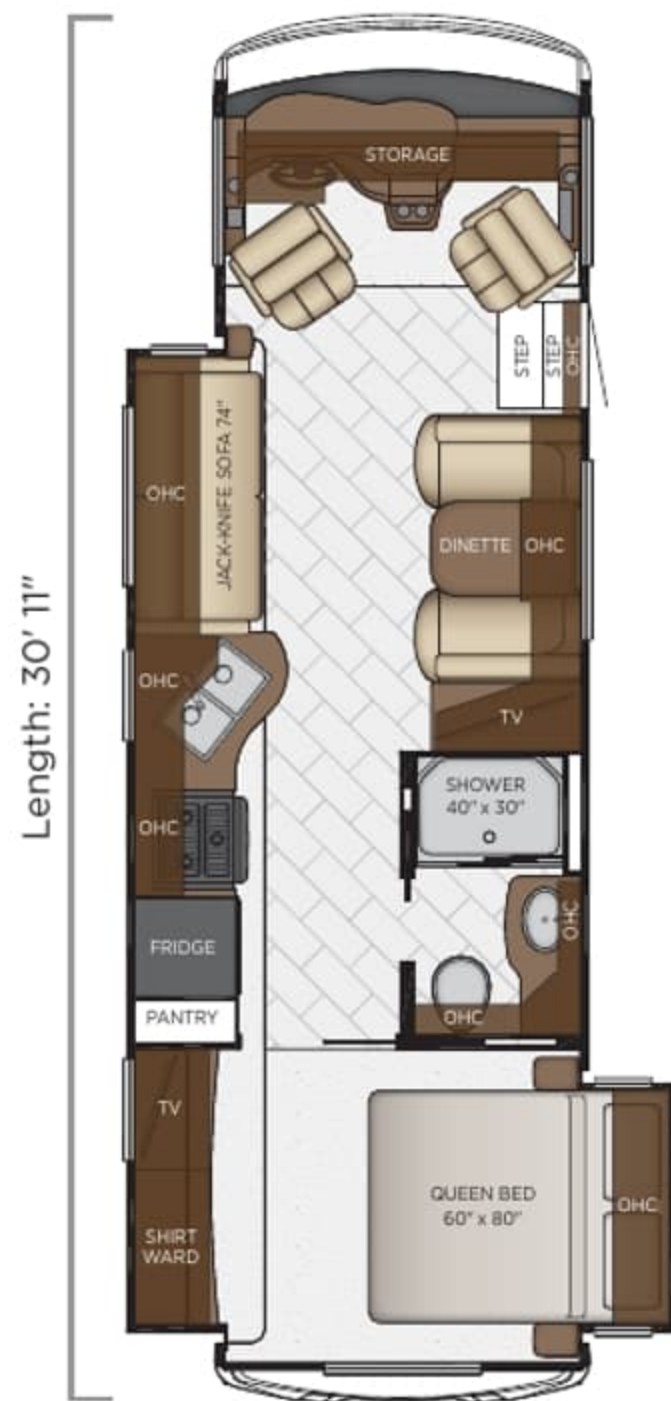
Length	30'11"
Width	101.5"
App. Overall Height	12'08"
Interior Width	95.5"
Interior Height	80"
Grey Tank	60 gal.
Sewage Tank	40 gal.
Water Tank	75 gal.
Propane Tank	25 gal.
Furnace	40,000 btu



3124

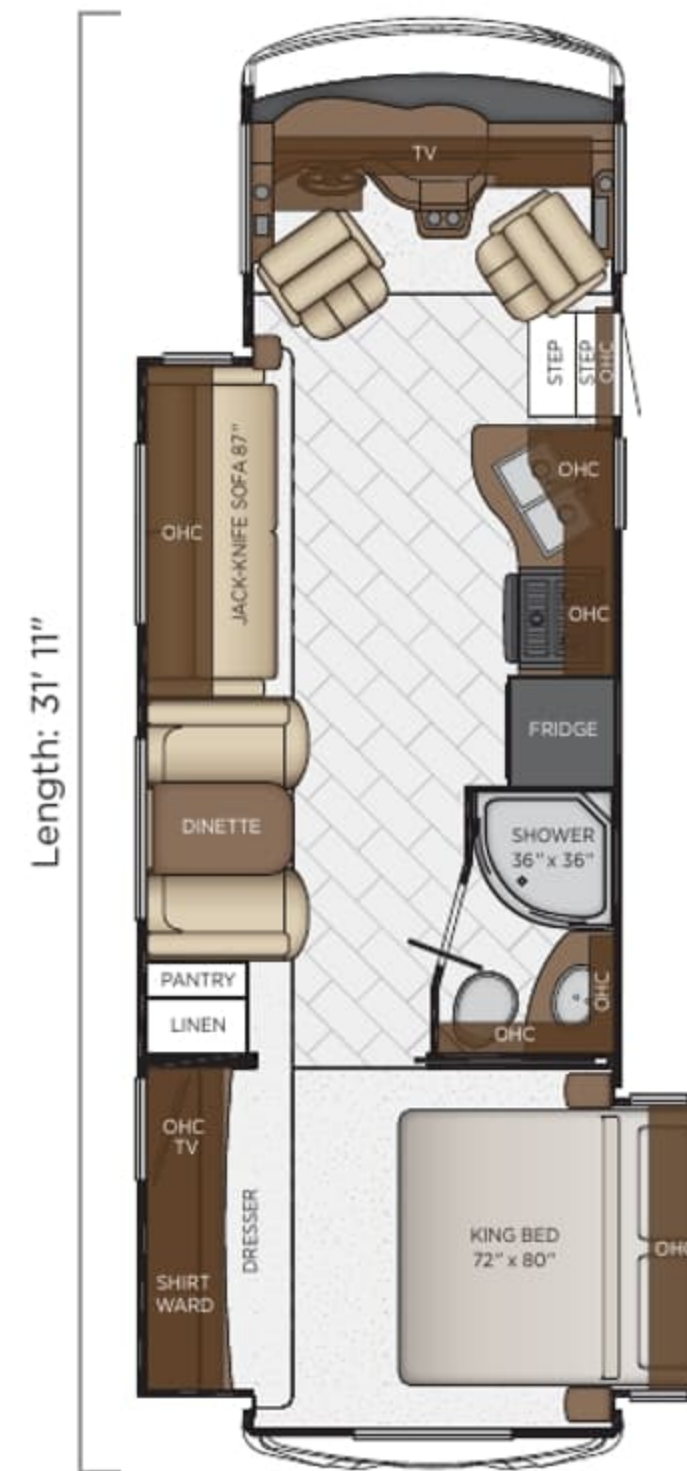
Length	31'11"
Width	101.5"
App. Overall Height	12'08"
Interior Width	95.5"
Interior Height	80"
Grey Tank	60 gal.
Sewage Tank	40 gal.
Water Tank	75 gal.
Propane Tank	25 gal.
Furnace	40,000 btu

BAY STAR



3014

Length	30'11"
Width	101.5"
App. Overall Height	12'08"
Interior Width	95.5"
Interior Height	80"
Grey Tank	60 gal.
Sewage Tank	40 gal.
Water Tank	75 gal.
Propane Tank	25 gal.
Furnace	40,000 btu



3124

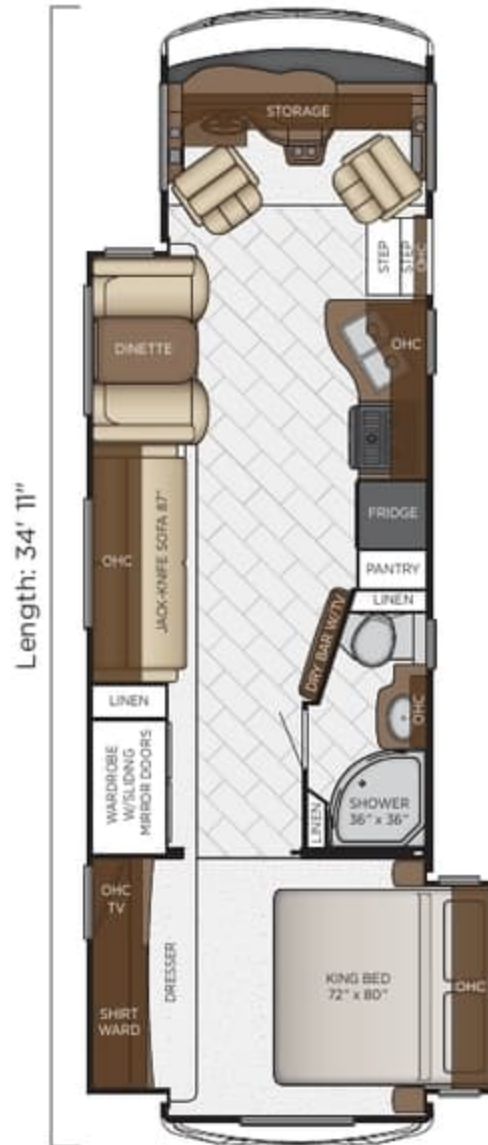
Length	31'11"
Width	101.5"
App. Overall Height	12'08"
Interior Width	95.5"
Interior Height	80"
Grey Tank	60 gal.
Sewage Tank	40 gal.
Water Tank	75 gal.
Propane Tank	25 gal.
Furnace	40,000 btu

FLOOR PLANS



3226

Length	32'11"
Width	101.5"
App. Overall Height	12'08"
Interior Width	95.5"
Interior Height	80"
Grey Tank	60 gal.
Sewage Tank	40 gal.
Water Tank	75 gal.
Propane Tank	25 gal.
Furnace	40,000 btu



3401

Length	34'11"
Width	101.5"
App. Overall Height	12'08"
Interior Width	95.5"
Interior Height	80"
Grey Tank	60 gal.
Sewage Tank	40 gal.
Water Tank	75 gal.
Propane Tank	25 gal.
Furnace	40,000 btu



3408

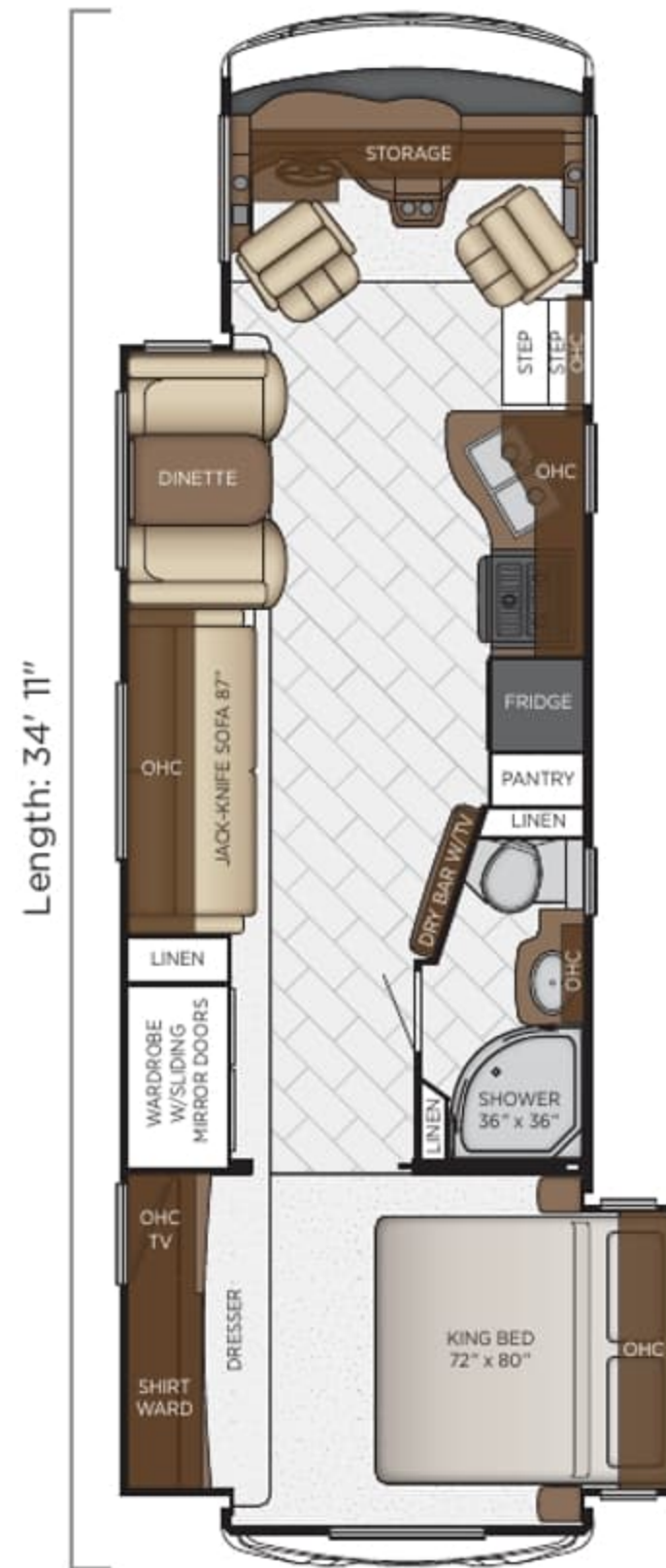
Length	34'11"
Width	101.5"
App. Overall Height	12'08"
Interior Width	95.5"
Interior Height	80"
Grey Tank	60 gal.
Sewage Tank	40 gal.
Water Tank	75 gal.
Propane Tank	25 gal.
Furnace	40,000 btu

FLOOR PLANS



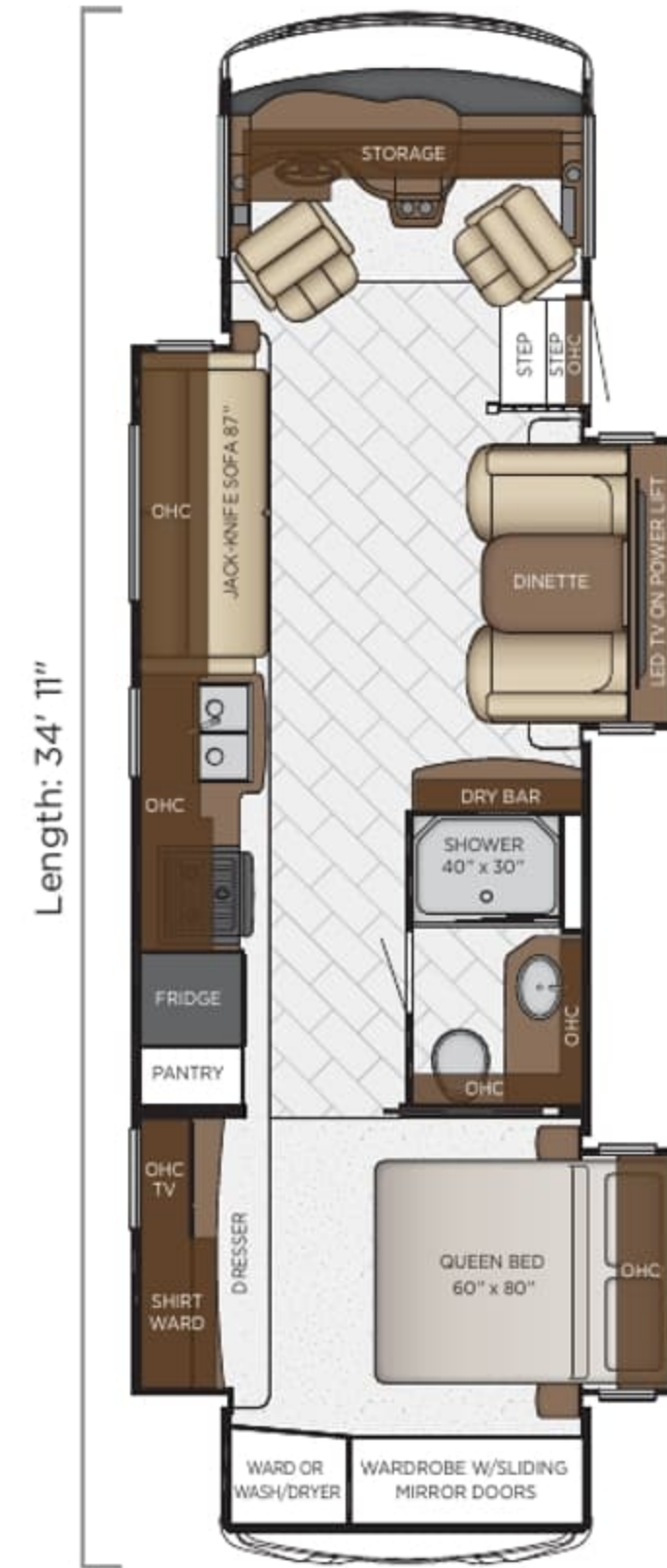
3226

Length	32'11"
Width	101.5"
App. Overall Height	12'08"
Interior Width	95.5"
Interior Height	80"
Grey Tank	60 gal.
Sewage Tank	40 gal.
Water Tank	75 gal.
Propane Tank	25 gal.
Furnace	40,000 btu



3401

Length	34'11"
Width	101.5"
App. Overall Height	12'08"
Interior Width	95.5"
Interior Height	80"
Grey Tank	60 gal.
Sewage Tank	40 gal.
Water Tank	75 gal.
Propane Tank	25 gal.
Furnace	40,000 btu



3408

Length	34'11"
Width	101.5"
App. Overall Height	12'08"
Interior Width	95.5"
Interior Height	80"
Grey Tank	60 gal.
Sewage Tank	40 gal.
Water Tank	75 gal.
Propane Tank	25 gal.
Furnace	40,000 btu

BAY STAR



Length: 34' 11"

3414

Length	34'11"
Width	101.5"
App. Overall Height	12'08"
Interior Width	95.5"
Interior Height	80"
Grey Tank	60 gal.
Sewage Tank	40 gal.
Water Tank	75 gal.
Propane Tank	25 gal.
Furnace	40,000 btu

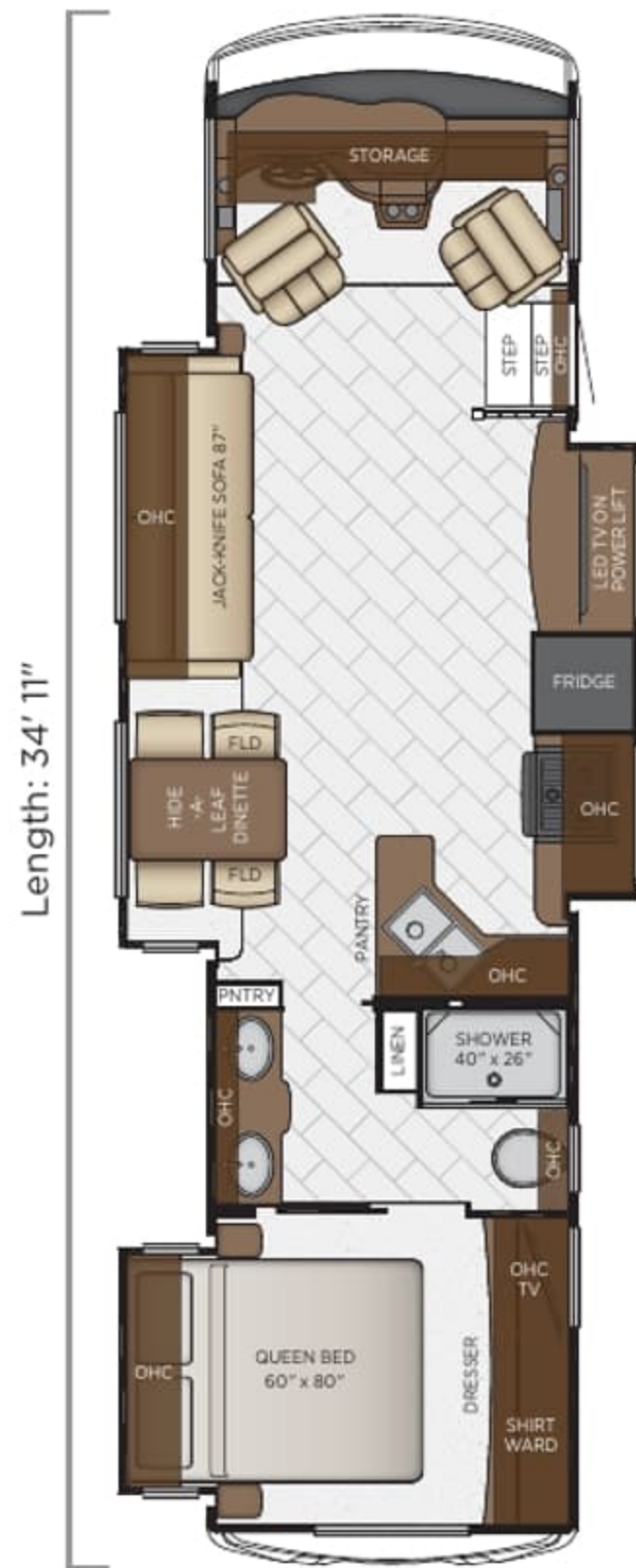


Length: 34' 11"

3419

Length	34'11"
Width	101.5"
App. Overall Height	12'08"
Interior Width	95.5"
Interior Height	80"
Grey Tank	60 gal.
Sewage Tank	40 gal.
Water Tank	75 gal.
Propane Tank	25 gal.
Furnace	40,000 btu

BAY STAR



3414

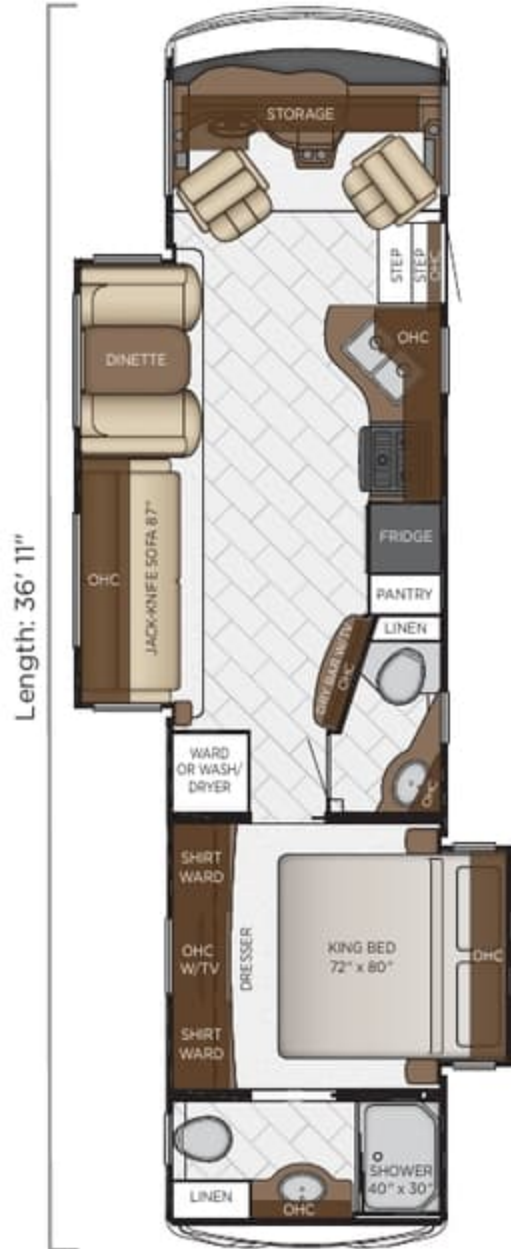
Length	34'11"
Width	101.5"
App. Overall Height	12'08"
Interior Width	95.5"
Interior Height	80"
Grey Tank	60 gal.
Sewage Tank	40 gal.
Water Tank	75 gal.
Propane Tank	25 gal.
Furnace	40,000 btu



3419

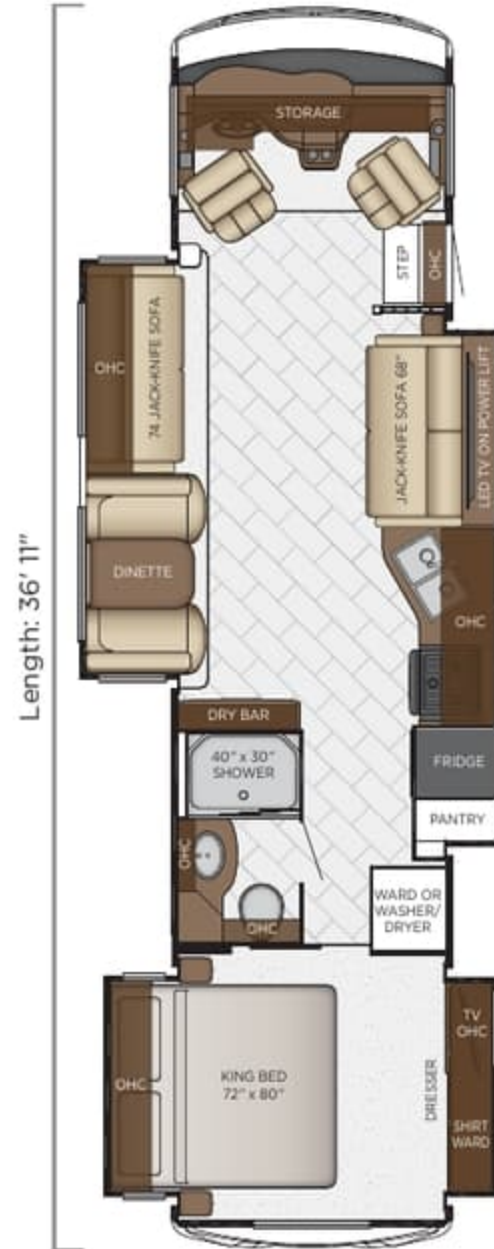
Length	34'11"
Width	101.5"
App. Overall Height	12'08"
Interior Width	95.5"
Interior Height	80"
Grey Tank	60 gal.
Sewage Tank	40 gal.
Water Tank	75 gal.
Propane Tank	25 gal.
Furnace	40,000 btu

FLOOR PLANS



3609

Length	36'11"
Width	101.5"
App. Overall Height	12'08"
Interior Width	95.5"
Interior Height	80"
Grey Tank	60 gal.
Sewage Tank	92 gal.
Water Tank	75 gal.
Propane Tank	25 gal.
Furnace	40,000 btu



3626

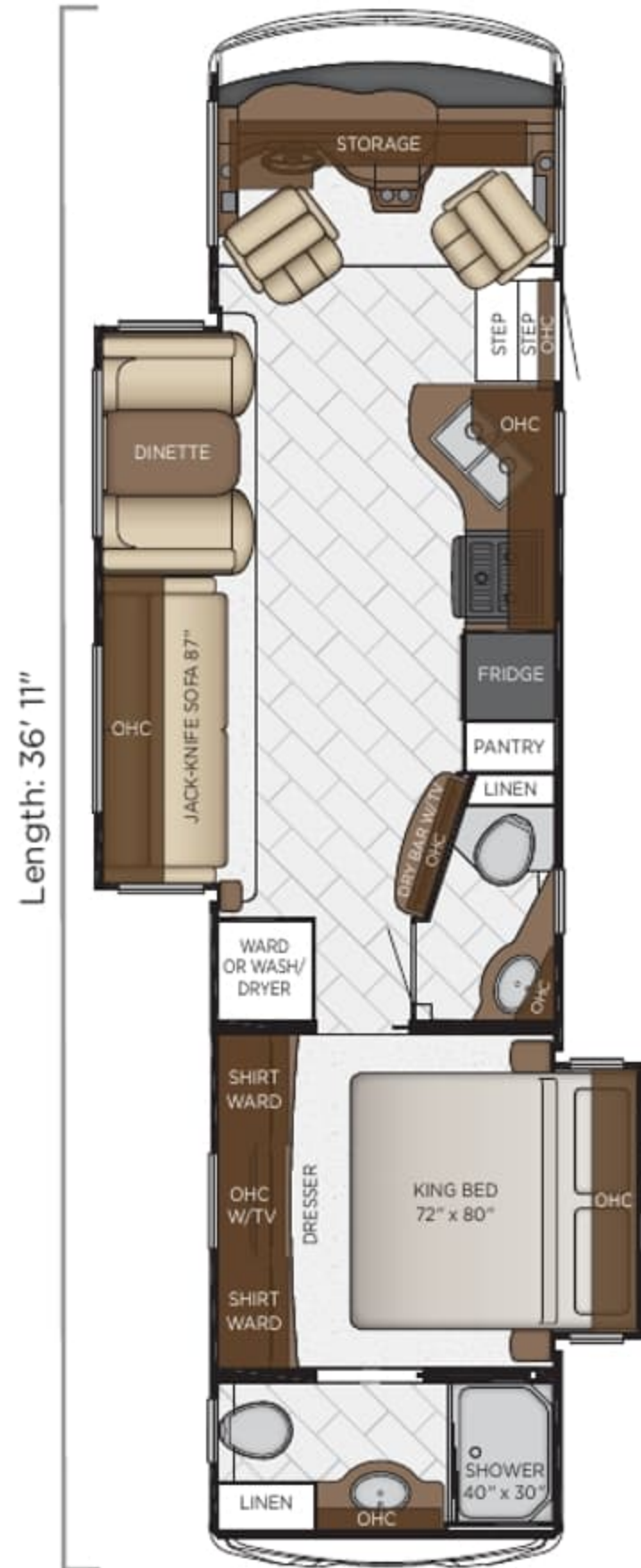
Length	36'11"
Width	101.5"
App. Overall Height	12'08"
Interior Width	95.5"
Interior Height	80"
Grey Tank	60 gal.
Sewage Tank	40 gal.
Water Tank	75 gal.
Propane Tank	25 gal.
Furnace	40,000 btu



3628

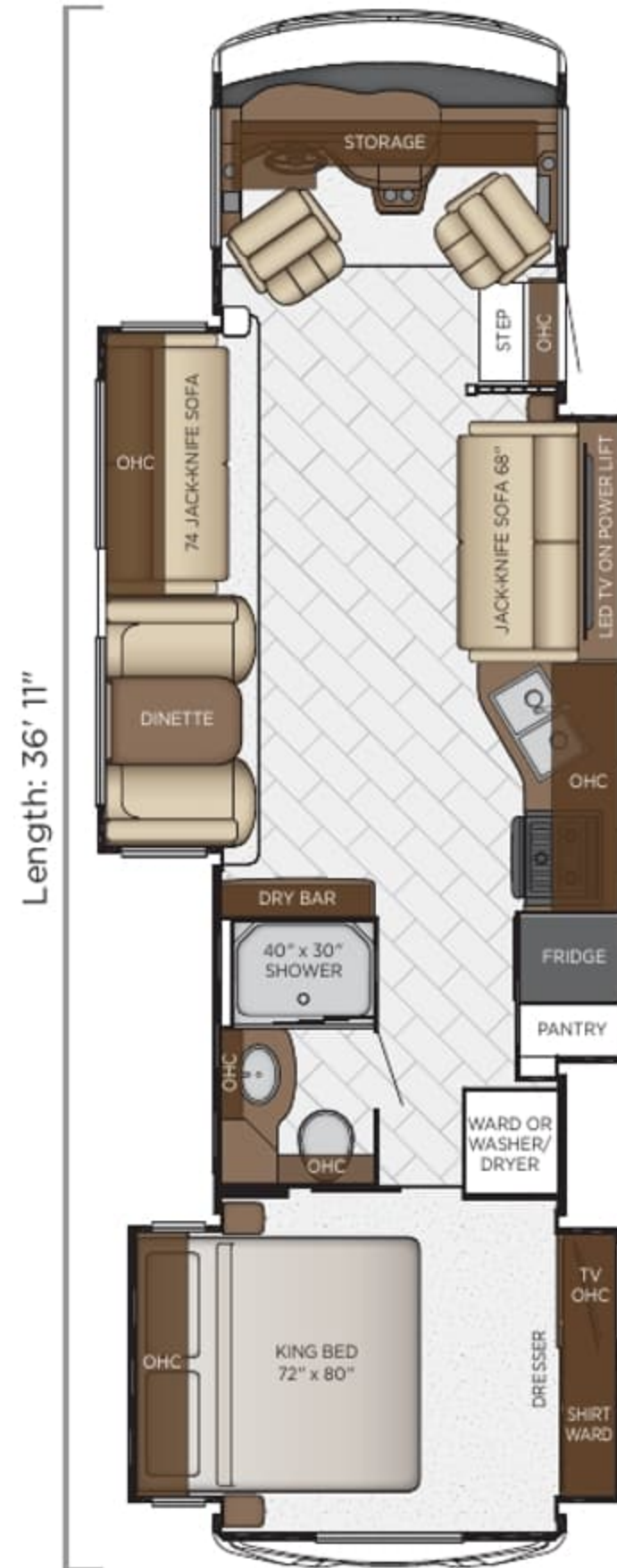
Length	36'11"
Width	101.5"
App. Overall Height	12'08"
Interior Width	95.5"
Interior Height	80"
Grey Tank	60 gal.
Sewage Tank	40 gal.
Water Tank	75 gal.
Propane Tank	25 gal.
Furnace	40,000 btu

FLOOR PLANS



3609

Length	36'11"
Width	101.5"
App. Overall Height	12'08"
Interior Width	95.5"
Interior Height	80"
Grey Tank	60 gal.
Sewage Tank	92 gal.
Water Tank	75 gal.
Propane Tank	25 gal.
Furnace	40,000 btu



3626

Length	36'11"
Width	101.5"
App. Overall Height	12'08"
Interior Width	95.5"
Interior Height	80"
Grey Tank	60 gal.
Sewage Tank	40 gal.
Water Tank	75 gal.
Propane Tank	25 gal.
Furnace	40,000 btu



3628

Length	36'11"
Width	101.5"
App. Overall Height	12'08"
Interior Width	95.5"
Interior Height	80"
Grey Tank	60 gal.
Sewage Tank	40 gal.
Water Tank	75 gal.
Propane Tank	25 gal.
Furnace	40,000 btu

QUALITY YOU CAN FEEL

Like a fine home, the 2019 Bay Star and Bay Star Sport are framed 16 inches on center, and are covered by a BriteTEK™ roof with walkable decking and an integrated gutter rail.

BAY STAR SPORT

FLOOR PLAN	ENGINE HP	AXLE RATIO	FUEL CAP.	WHEEL BASE	FRONT GAWR	REAR GAWR	TAG GAWR	GVWR	GCWR	APP. UVW	APP. NCC
2702	320	4.30	80 gal.	172	7000 lb.	12000 lb.	n/a	18000 lb.	23000 lb.	15190 lb.	2810 lb.
2813	320	5.38	80 gal.	184	7500 lb.	13500 lb.	n/a	20500 lb.	26000 lb.	16800 lb.	3700 lb.
3008	320	5.38	80 gal.	200	7500 lb.	13500 lb.	n/a	20500 lb.	26000 lb.	17150 lb.	3350 lb.
3014	320	5.38	80 gal.	200	7500 lb.	13500 lb.	n/a	20500 lb.	26000 lb.	17300 lb.	3200 lb.
3226	320	5.38	80 gal.	208	7500 lb.	13500 lb.	n/a	20500 lb.	26000 lb.	17700 lb.	2800 lb.
3307	320	5.38	80 gal.	216	8000 lb.	15000 lb.	n/a	22000 lb.	26000 lb.	17900 lb.	4100 lb.

BAY STAR

FLOOR PLAN	ENGINE HP	AXLE RATIO	FUEL CAP.	WHEEL BASE	FRONT GAWR	REAR GAWR	TAG GAWR	GVWR	GCWR	APP. UVW	APP. NCC
3014	320	5.38	80 gal.	200	8000 lb.	15000 lb.	n/a	22000 lb.	26000 lb.	17700 lb.	4300 lb.
3124	320	5.38	80 gal.	200	8000 lb.	15000 lb.	n/a	22000 lb.	26000 lb.	18237 lb.	3763 lb.
3226	320	5.38	80 gal.	208	8000 lb.	15000 lb.	n/a	22000 lb.	26000 lb.	18308 lb.	3682 lb.
3401	320	6.17	80 gal.	228	9000 lb.	15500 lb.	n/a	24000 lb.	30000 lb.	19665 lb.	4335 lb.
3408	320	6.17	80 gal.	234	9000 lb.	15500 lb.	n/a	24000 lb.	30000 lb.	20573 lb.	3427 lb.
3414	320	6.17	80 gal.	228	9000 lb.	15500 lb.	n/a	24000 lb.	30000 lb.	19148 lb.	4852 lb.
3419	320	6.17	80 gal.	234	9000 lb.	15500 lb.	n/a	24000 lb.	30000 lb.	20573 lb.	3427 lb.
3609	320	6.17	80 gal.	242	9000 lb.	15500 lb.	n/a	24000 lb.	30000 lb.	20880 lb.	3120 lb.
3626	320	6.17	80 gal.	252	9000 lb.	15500 lb.	n/a	24000 lb.	30000 lb.	20538 lb.	3426 lb.
3628	320	6.17	80 gal.	252	9000 lb.	15500 lb.	n/a	24000 lb.	30000 lb.	20538 lb.	3462 lb.

The content in our literature depicts and describes products that are subject to change. For the most recent images and information, please visit NewmarCorp.com.

Lengths, heights, widths and dry weights are approximate. Weight will vary based on optional equipment added to the above base weight.

GAWR: Gross Axle Weight Rating is the maximum permissible weight for an axle.

GVWR: Gross Vehicle Weight Rating is the maximum permissible weight for a fully loaded motor coach.

GCWR: Gross Combination Weight Rating is the value specified by the manufacturer of the vehicle as the maximum allowable loaded weight of this motor coach and any towed trailer or towed vehicle.

UVW: Unloaded Vehicle Weight is the weight of this motor coach as built at the factory with full fuel, engine oil and coolants. Does not include cargo, fresh water, propane gas or dealer-installed accessories.

NCC: Net Carrying Capacity is the maximum weight of all occupants, including the driver, personal belongings, food, fresh water, waste water, propane gas, tools, tongue weight of towed vehicle, dealer-installed accessories, etc., that can be carried by the motor coach.

Specifications supplied by the chassis manufacturer.

Bay Star Sport; Bay Star:

Roof R-Value = 16

Sidewall R-Value = 11

Floor R-Value = 11

QUALITY YOU CAN FEEL

Like a fine home, the 2019 Bay Star and Bay Star Sport are framed 16 inches on center, and are covered by a BriteTEK™ roof with walkable decking and an integrated gutter rail.

BAY STAR SPORT

FLOOR PLAN	ENGINE HP	AXLE RATIO	FUEL CAP.	WHEEL BASE	FRONT GAWR	REAR GAWR	TAG GAWR	GVWR	GCWR	APP. UVW	APP. NCC
2702	320	4.30	80 gal.	172	7000 lb.	12000 lb.	n/a	18000 lb.	23000 lb.	15190 lb.	2810 lb.
2813	320	5.38	80 gal.	184	7500 lb.	13500 lb.	n/a	20500 lb.	26000 lb.	16800 lb.	3700 lb.
3008	320	5.38	80 gal.	200	7500 lb.	13500 lb.	n/a	20500 lb.	26000 lb.	17150 lb.	3350 lb.
3014	320	5.38	80 gal.	200	7500 lb.	13500 lb.	n/a	20500 lb.	26000 lb.	17300 lb.	3200 lb.
3226	320	5.38	80 gal.	208	7500 lb.	13500 lb.	n/a	20500 lb.	26000 lb.	17700 lb.	2800 lb.
3307	320	5.38	80 gal.	216	8000 lb.	15000 lb.	n/a	22000 lb.	26000 lb.	17900 lb.	4100 lb.

BAY STAR

FLOOR PLAN	ENGINE HP	AXLE RATIO	FUEL CAP.	WHEEL BASE	FRONT GAWR	REAR GAWR	TAG GAWR	GVWR	GCWR	APP. UVW	APP. NCC
3014	320	5.38	80 gal.	200	8000 lb.	15000 lb.	n/a	22000 lb.	26000 lb.	17700 lb.	4300 lb.
3124	320	5.38	80 gal.	200	8000 lb.	15000 lb.	n/a	22000 lb.	26000 lb.	18237 lb.	3763 lb.
3226	320	5.38	80 gal.	208	8000 lb.	15000 lb.	n/a	22000 lb.	26000 lb.	18308 lb.	3682 lb.
3401	320	6.17	80 gal.	228	9000 lb.	15500 lb.	n/a	24000 lb.	30000 lb.	19665 lb.	4335 lb.
3408	320	6.17	80 gal.	234	9000 lb.	15500 lb.	n/a	24000 lb.	30000 lb.	20573 lb.	3427 lb.
3414	320	6.17	80 gal.	228	9000 lb.	15500 lb.	n/a	24000 lb.	30000 lb.	19148 lb.	4852 lb.
3419	320	6.17	80 gal.	234	9000 lb.	15500 lb.	n/a	24000 lb.	30000 lb.	20573 lb.	3427 lb.
3609	320	6.17	80 gal.	242	9000 lb.	15500 lb.	n/a	24000 lb.	30000 lb.	20880 lb.	3120 lb.
3626	320	6.17	80 gal.	252	9000 lb.	15500 lb.	n/a	24000 lb.	30000 lb.	20538 lb.	3426 lb.
3628	320	6.17	80 gal.	252	9000 lb.	15500 lb.	n/a	24000 lb.	30000 lb.	20538 lb.	3462 lb.

The content in our literature depicts and describes products that are subject to change. For the most recent images and information, please visit NewmarCorp.com.

Lengths, heights, widths and dry weights are approximate. Weight will vary based on optional equipment added to the above base weight.

GAWR: Gross Axle Weight Rating is the maximum permissible weight for an axle.

GVWR: Gross Vehicle Weight Rating is the maximum permissible weight for a fully loaded motor coach.

GCWR: Gross Combination Weight Rating is the value specified by the manufacturer of the vehicle as the maximum allowable loaded weight of this motor coach and any towed trailer or towed vehicle.

UVW: Unloaded Vehicle Weight is the weight of this motor coach as built at the factory with full fuel, engine oil and coolants. Does not include cargo, fresh water, propane gas or dealer-installed accessories.

NCC: Net Carrying Capacity is the maximum weight of all occupants, including the driver, personal belongings, food, fresh water, waste water, propane gas, tools, tongue weight of towed vehicle, dealer-installed accessories, etc., that can be carried by the motor coach.

Specifications supplied by the chassis manufacturer.

Bay Star Sport; Bay Star:

Roof R-Value = 16

Sidewall R-Value = 11

Floor R-Value = 11

FEATURES *and* OPTIONS



Bay Star cockpit

EXTERIOR



EXTERIOR FEATURES

Exterior Masterpiece Full Painted Graphics with Clearcoat Finish

Dura Shield Protection on Front Cap

Lighted Exterior Storage Compartments

Automatic Step for Entrance Door

Convex Exterior Mirrors with Defrost & Remote Control

Rear Hitch for Towing Car

Assist Handle at Entrance Door

Undercoating

Mud Flaps

Hydraulic Leveling Jacks

OPTIONS

Rear Ladder

Flagpole Bracket

CONSTRUCTION FEATURES

BriteTEK™ Roof with Walkable Deck

Gelcoated Fiberglass Exterior Sidewalls, Front & Rear Caps

Aluminum-Frame Sidewalls & Roof Construction, on 16" Center

5/8" Foam Insulation Laminated in Sidewalls & Ceiling

Polar Pak R19 Batten Insulation in Roof

OPTIONS

Stainless Steel Exterior Kitchen on Door Side Rear of Unit*

FEATURES *and* OPTIONS



Bay Star cockpit

EXTERIOR



EXTERIOR FEATURES

Exterior Masterpiece Full Painted Graphics with Clearcoat Finish

Dura Shield Protection on Front Cap

Lighted Exterior Storage Compartments

Automatic Step for Entrance Door

Convex Exterior Mirrors with Defrost & Remote Control

Rear Hitch for Towing Car

Assist Handle at Entrance Door

Undercoating

Mud Flaps

Hydraulic Leveling Jacks

OPTIONS

Rear Ladder

Flagpole Bracket

CONSTRUCTION FEATURES

BriteTEK™ Roof with Walkable Deck

Gelcoated Fiberglass Exterior Sidewalls, Front & Rear Caps

Aluminum-Frame Sidewalls & Roof Construction, on 16" Center

5/8" Foam Insulation Laminated in Sidewalls & Ceiling

Polar Pak R19 Batten Insulation in Roof

OPTIONS

Stainless Steel Exterior Kitchen on Door Side Rear of Unit*



WINDOWS AWNINGS & VENTS

One Piece Tinted Windshield

Frameless Double Pane Tinted Safety Glass Windows

Fan-Tastic Vent with Rain Sensor in Kitchen and Bathroom

Skylight Above Shower

Dometic® Weather Pro Side Awning with Aluminum Weather Shield

Slideout Covers

Rear Window*

OPTIONS

Bunk Windows*

Egress Door with Ladder System*

CHASSIS FEATURES

Ford® F-53 Chassis 22,000 lb. 33' Floor Plans

Ford® F-53 Chassis 24,000 lb. on 34'-36' Floor Plans

Cruise Control

Tilt Steering Wheel

Aluminum Wheels

Anti-Lock Braking System

AIR CONDITIONING & HEATING

Two 13.5 Penguin Heat Pump A/C, 5.5 Onan Generator, 50 Amp Electrical Service with Energy Management System

Dash Heater and Air Conditioner

Defrost Fans Built into Front Overhead

Propane Gas Furnace with Ducted Heat

OPTIONS

Auxiliary Heater in Bedroom

ELECTRICAL FEATURES

Two 12 Volt House Batteries

Battery Disconnect Switch for House Battery

12 Volt Auxiliary Receptacle on Dashboard

45 Amp Converter

Daytime Running Lights

Emergency Engine Start Switch

LED Ceiling Lights

Manually Operated Hold-To-Run Slideout Switch

Cable TV Connection

10 Watt Solar Panel to Charge Chassis Battery

Drain Lift Pump with 1000 Inverter*

Lights in Wardrobes

USB Chargers at Driver/Passenger Seat Area

OPTIONS

1000 Watt Inverter Run to TV's*

Solar Prep with Six Gauge Wire from Roof to House Battery Compartment



PLUMBING & BATH FEATURES

Demand Water System

Sewage Holding Tank Rinse

Water Heater Bypass System

Dometic® 310 China Bowl Stool

ABS Shower Surround with Shower Door

Systems Monitor Panel

Exterior Shower

OPTIONS

Water Filter for Entire Unit

INTERIOR FEATURES

Integrated Window Blind System on Entry Door

Vinyl Ceiling Panels

Decorative Wall Art*

Mini Blinds in Kitchen and Bathroom Windows

Vinyl Floor in Kitchen, Living Area and Bathroom

Carpeting in Bedroom and on Slideout Floors

Interior Assist Handle at Main Entrance Door

Quilted Bedspread and Accent Pillow

Inlaid Six Panel Design Interior Passage Swing Doors

Auto-Motion Manual Double Roller Shades on Windows Behind Driver/Passenger Area

Auto-Motion Power Shade at Windshield & Manual Shades at Driver & Passenger Side Windows

Dash Panel Color Coordinated ABS

Shoe Storage Located in Entrance Door Step Compartment*

OPTIONS

Vinyl Tile Floor in Place of Vinyl Floor



WINDOWS AWNINGS & VENTS

One Piece Tinted Windshield

Frameless Double Pane Tinted Safety Glass Windows

Fan-Tastic Vent with Rain Sensor in Kitchen and Bathroom

Skylight Above Shower

Dometic® Weather Pro Side Awning with Aluminum Weather Shield

Slideout Covers

Rear Window*

OPTIONS

Bunk Windows*

Egress Door with Ladder System*

CHASSIS FEATURES

Ford® F-53 Chassis 22,000 lb. 33' Floor Plans

Ford® F-53 Chassis 24,000 lb. on 34'-36' Floor Plans

Cruise Control

Tilt Steering Wheel

Aluminum Wheels

Anti-Lock Braking System

AIR CONDITIONING & HEATING

Two 13.5 Penguin Heat Pump A/C, 5.5 Onan Generator, 50 Amp Electrical Service with Energy Management System

Dash Heater and Air Conditioner

Defrost Fans Built into Front Overhead

Propane Gas Furnace with Ducted Heat

OPTIONS

Auxiliary Heater in Bedroom

ELECTRICAL FEATURES

Two 12 Volt House Batteries

Battery Disconnect Switch for House Battery

12 Volt Auxiliary Receptacle on Dashboard

45 Amp Converter

Daytime Running Lights

Emergency Engine Start Switch

LED Ceiling Lights

Manually Operated Hold-To-Run Slideout Switch

Cable TV Connection

10 Watt Solar Panel to Charge Chassis Battery

Drain Lift Pump with 1000 Inverter*

Lights in Wardrobes

USB Chargers at Driver/Passenger Seat Area

OPTIONS

1000 Watt Inverter Run to TV's*

Solar Prep with Six Gauge Wire from Roof to House Battery Compartment

PLUMBING & BATH FEATURES

Demand Water System

Sewage Holding Tank Rinse

Water Heater Bypass System

Dometic® 310 China Bowl Stool

ABS Shower Surround with Shower Door

Systems Monitor Panel

Exterior Shower

OPTIONS

Water Filter for Entire Unit

INTERIOR FEATURES

Integrated Window Blind System on Entry Door

Vinyl Ceiling Panels

Decorative Wall Art*

Mini Blinds in Kitchen and Bathroom Windows

Vinyl Floor in Kitchen, Living Area and Bathroom

Carpeting in Bedroom and on Slideout Floors

Interior Assist Handle at Main Entrance Door

Quilted Bedspread and Accent Pillow

Inlaid Six Panel Design Interior Passage Swing Doors

Auto-Motion Manual Double Roller Shades on Windows Behind Driver/Passenger Area

Auto-Motion Power Shade at Windshield & Manual Shades at Driver & Passenger Side Windows

Dash Panel Color Coordinated ABS

Shoe Storage Located in Entrance Door Step Compartment*

OPTIONS

Vinyl Tile Floor in Place of Vinyl Floor



CABINETS & FURNITURE

Calypso Glazed Maple Mitered Designer Cabinet Doors-Matte Finish

Concealed Hinges on Cabinet Doors

Drawers with Full-Extension Ball Bearing Guides

Polished Solid Surface Countertop in Kitchen with Stainless Steel Sink

Solid Surface Countertops in Bathroom and Bedroom

Flexsteel® Ultralux Leather Sofa and Front Seats

Lifts on Bed Top

Plush Pillow Top Mattress

Passenger Seat Work Station

Six Way Power for Driver Seat

Manual Foot Rest on Passenger Seat

Pullout Pantry Shelves*

Mesh Cell Phone Holder at Each Bunk*

OPTIONS

Astoria Glazed Maple Mitered Designer Cabinets-Matte Finish

Harbour Glazed Maple Mitered Designer Cabinets-Matte Finish

Combination Desk with Buffet Dinette Table, 2 Fixed & 2 Folding Chairs*

Combination Desk/Dinette with Free Standing Hidden Leaf Table, 2 Fixed & 2 Folding Chairs*

Buffet Dinette with Free Standing Table*

Buffet Dinette*

Free Standing Hidden Leaf Dinette Table, 2 Fixed & 2 Folding Chairs*

Dropdown Bunk Bed Over Driver/Passenger Seats with Electric Release Latches and Bunk Ladder*

Dropdown Bunk Bed Over Driver/Passenger Seats with Electric Release Latches, 32" TV in Front Overhead and Bunk Ladder*

Folding Cockpit Table

Hide-A-Bed Sofa with Innerspring Mattress*

2 Recliners - Off Door Side, Fold-N-Tumble - Door Side*

Off Door Side-Side Folding Hide-A-Bed Sofa with Innerspring Mattress*

Off Door Side 74" Fold-N-Tumble Sofa with Air Mattress*

Side Folding Hide-A-Bed Sofa with Innerspring Mattress*

87" Sofa/Bunk*

Flexsteel® Euro Booth Dinette*

Two Ottomans*

APPLIANCES & ACCESSORIES

Raised Panel Refrigerator Door Insert Panel

Recessed Three-Burner Range with Oven and Solid Surface Cover

30" Over the Range Stainless Steel Microwave

Norcold® 10 Cf. Refrigerator

6 gal. Gas/Electric Water Heater with Electronic Ignition

OPTIONS

Norcold 12 Cf. 4-Door Refrigerator with Icemaker and Raised Panel Door Inserts*

Whirlpool® 11 Cf. Refrigerator with Dedicated 1000W Pure Sine Inverter, 2 Extra Batteries & Icemaker*

Whirlpool® 11 Cf. Refrigerator with Dedicated 1000W Pure Sine Inverter & 2 Extra Batteries*

Icemaker Added to Standard Norcold Refrigerator*

Icemaker Added to Standard Norcold Refrigerator with Heated Water Line*

30" Convection Stainless Steel Microwave with Recessed 3 Burner Cooktop

Fireplace in Living Area*

110 Volt Heat Pads for Holding Tanks

Prep For Two Piece Washer/Dryer*

Whirlpool® Two Piece Stacked Washer/Dryer*



AUDIO, VIDEO & ACCESSORIES

Vizio LED TV & DVD Player in Living and Bedroom Areas (TV sizes vary per Floor Plan)

Dash AM/FM Radio and CD Player with Harman/JBL 180 Watt Sound System

Rearview Color Monitor System with Audio

Winegard Digital Crank-Up TV Antenna

Satellite Dish Prep on Roof

High Definition Component Wiring

TV Jack and 110 Volt Recept in Door Side Exterior Storage Compartment

Bluetooth Microphone for Sony Dash Radio

10 Bc Fire Extinguisher, Smoke Detector, Propane and Carbon Monoxide Detector

Side-view Cameras Displayed onto Rearview Monitor Screen

OPTIONS

Vizio 32" LED TV in Front Overhead

Vizio 32" LED TV in Sidewall*

Two Blu-ray Disc Players

SiriusXM® Radio Capability with Antenna (Does Not Include Monthly Subscription)

Bose Solo 5 Soundbar Sound System

WiFiRanger Sky3 Pack Router

Xite Dash Radio, 6" Monitor with Rand McNally Navigation

Winegard® Automatic Open Face Satellite Dish

Winegard® Automatic Dome Satellite Dish

Winegard® In Motion Dome Satellite Dish

Winegard® Automatic Open Face SWM Satellite

Winegard® Cellular In Motion Wifi Required Cellular Subscription Through Winegard

Winegard® Cellular In Motion Wifi Prep

Xite Dash Radio, 6" Monitor with Rand McNally Navigation

WiFiRanger SkyPro LTE Cellular Router

*Check with dealership on floor plan availability.

The content in our literature depicts and describes products that are subject to change. For the most recent images and information, please visit NewmarCorp.com.



CABINETS & FURNITURE

Calypso Glazed Maple Mitered Designer Cabinet Doors-Matte Finish
Concealed Hinges on Cabinet Doors
Drawers with Full-Extension Ball Bearing Guides
Polished Solid Surface Countertop in Kitchen with Stainless Steel Sink
Solid Surface Countertops in Bathroom and Bedroom
Flexsteel® Ultralux Leather Sofa and Front Seats
Lifts on Bed Top
Plush Pillow Top Mattress
Passenger Seat Work Station
Six Way Power for Driver Seat
Manual Foot Rest on Passenger Seat
Pullout Pantry Shelves*
Mesh Cell Phone Holder at Each Bunk*
OPTIONS
Astoria Glazed Maple Mitered Designer Cabinets-Matte Finish
Harbour Glazed Maple Mitered Designer Cabinets-Matte Finish
Combination Desk with Buffet Dinette Table, 2 Fixed & 2 Folding Chairs*
Combination Desk/Dinette with Free Standing Hidden Leaf Table, 2 Fixed & 2 Folding Chairs*
Buffet Dinette with Free Standing Table*
Buffet Dinette*
Free Standing Hidden Leaf Dinette Table, 2 Fixed & 2 Folding Chairs*
Dropdown Bunk Bed Over Driver/Passenger Seats with Electric Release Latches and Bunk Ladder*
Dropdown Bunk Bed Over Driver/Passenger Seats with Electric Release Latches, 32" TV in Front Overhead and Bunk Ladder*
Folding Cockpit Table
Hide-A-Bed Sofa with Innerspring Mattress*
2 Recliners - Off Door Side, Fold-N-Tumble - Door Side*

Off Door Side-Side Folding Hide-A-Bed Sofa with Innerspring Mattress*
Off Door Side 74" Fold-N-Tumble Sofa with Air Mattress*
Side Folding Hide-A-Bed Sofa with Innerspring Mattress*
87" Sofa/Bunk*
Flexsteel® Euro Booth Dinette*
Two Ottomans*

APPLIANCES & ACCESSORIES

Raised Panel Refrigerator Door Insert Panel
Recessed Three-Burner Range with Oven and Solid Surface Cover
30" Over the Range Stainless Steel Microwave
Norcold® 10 Cf. Refrigerator
6 gal. Gas/Electric Water Heater with Electronic Ignition
OPTIONS
Norcold 12 Cf. 4-Door Refrigerator with Icemaker and Raised Panel Door Inserts*
Whirlpool® 11 Cf. Refrigerator with Dedicated 1000W Pure Sine Inverter, 2 Extra Batteries & Icemaker*
Whirlpool® 11 Cf. Refrigerator with Dedicated 1000W Pure Sine Inverter & 2 Extra Batteries*
Icemaker Added to Standard Norcold Refrigerator*
Icemaker Added to Standard Norcold Refrigerator with Heated Water Line*
30" Convection Stainless Steel Microwave with Recessed 3 Burner Cooktop
Fireplace in Living Area*
110 Volt Heat Pads for Holding Tanks
Prep For Two Piece Washer/Dryer*
Whirlpool® Two Piece Stacked Washer/Dryer*



AUDIO, VIDEO & ACCESSORIES

Vizio LED TV & DVD Player in Living and Bedroom Areas (TV sizes vary per Floor Plan)
Dash AM/FM Radio and CD Player with Harman/JBL 180 Watt Sound System
Rearview Color Monitor System with Audio
Winegard Digital Crank-Up TV Antenna
Satellite Dish Prep on Roof
High Definition Component Wiring
TV Jack and 110 Volt Recept in Door Side Exterior Storage Compartment
Bluetooth Microphone for Sony Dash Radio
10 Bc Fire Extinguisher, Smoke Detector, Propane and Carbon Monoxide Detector
Side-view Cameras Displayed onto Rearview Monitor Screen
OPTIONS
Vizio 32" LED TV in Front Overhead
Vizio 32" LED TV in Sidewall*
Two Blu-ray Disc Players
SiriusXM® Radio Capability with Antenna (Does Not Include Monthly Subscription)
Bose Solo 5 Soundbar Sound System
WiFiRanger Sky3 Pack Router
Xite Dash Radio, 6" Monitor with Rand McNally Navigation
Winegard® Automatic Open Face Satellite Dish
Winegard® Automatic Dome Satellite Dish
Winegard® In Motion Dome Satellite Dish
Winegard® Automatic Open Face SWM Satellite
Winegard® Cellular In Motion Wifi Required Cellular Subscription Through Winegard
Winegard® Cellular In Motion Wifi Prep
Xite Dash Radio, 6" Monitor with Rand McNally Navigation
WiFiRanger SkyPro LTE Cellular Router

*Check with dealership on floor plan availability.

The content in our literature depicts and describes products that are subject to change. For the most recent images and information, please visit NewmarCorp.com.

THE NEWMAR CUSTOMER EXPERIENCE

The Newmar difference goes beyond our industry-leading motor coaches to deliver you with an unrivaled ownership experience.



QUALITY FROM THE START

Every Newmar is crafted one at a time by folks who have spent an average of eight years building them. And each coach we assemble must undergo more than 1,000 tests and checks before ever leaving our factory.



CAREFULLY SELECTED DEALERS

We view our dealership network in terms of quality, not quantity. Each of our dealers acts as a partner in our shared mission to exceed your highest of expectations, for an ownership experience that's second to none from day one.



EVERYTHING IN ONE PLACE

As a Newmar owner, you'll find resources specific to your coach through Newgle, an easy-to-use knowledge base that houses everything from user guides to technical support documents.



FRIENDS FOR LIFE

*Meet fellow owners through the **Newmar Kountry Klub**, a top social club for RV travelers that hosts rallies and other special events throughout the U.S. and Canada.*



SEAMLESS SERVICE

When you join the Newmar family, we pair you with a dedicated service specialist with expert knowledge of your exact coach. Available 24/7, our service specialists guarantee dealer warranty authorizations within four business hours and ship all in-stock parts the same day, free of charge.



ROCK-SOLID PROTECTION

*All models include a one-year/unlimited mileage limited warranty and a five-year, non-transferable structural warranty that covers your coach's superstructure in the event it fails to perform. **Ask your Newmar dealer for more details.***

THE NEWMAR CUSTOMER EXPERIENCE

The Newmar difference goes beyond our industry-leading motor coaches to deliver you with an unrivaled ownership experience.



QUALITY FROM THE START

Every Newmar is crafted one at a time by folks who have spent an average of eight years building them. And each coach we assemble must undergo more than 1,000 tests and checks before ever leaving our factory.



CAREFULLY SELECTED DEALERS

We view our dealership network in terms of quality, not quantity. Each of our dealers acts as a partner in our shared mission to exceed your highest of expectations, for an ownership experience that's second to none from day one.



EVERYTHING IN ONE PLACE

As a Newmar owner, you'll find resources specific to your coach through Newgle, an easy-to-use knowledge base that houses everything from user guides to technical support documents.



FRIENDS FOR LIFE

*Meet fellow owners through the **Newmar Kountry Klub**, a top social club for RV travelers that hosts rallies and other special events throughout the U.S. and Canada.*



SEAMLESS SERVICE

When you join the Newmar family, we pair you with a dedicated service specialist with expert knowledge of your exact coach. Available 24/7, our service specialists guarantee dealer warranty authorizations within four business hours and ship all in-stock parts the same day, free of charge.



ROCK-SOLID PROTECTION

*All models include a one-year/unlimited mileage limited warranty and a five-year, non-transferable structural warranty that covers your coach's superstructure in the event it fails to perform. **Ask your Newmar dealer for more details.***

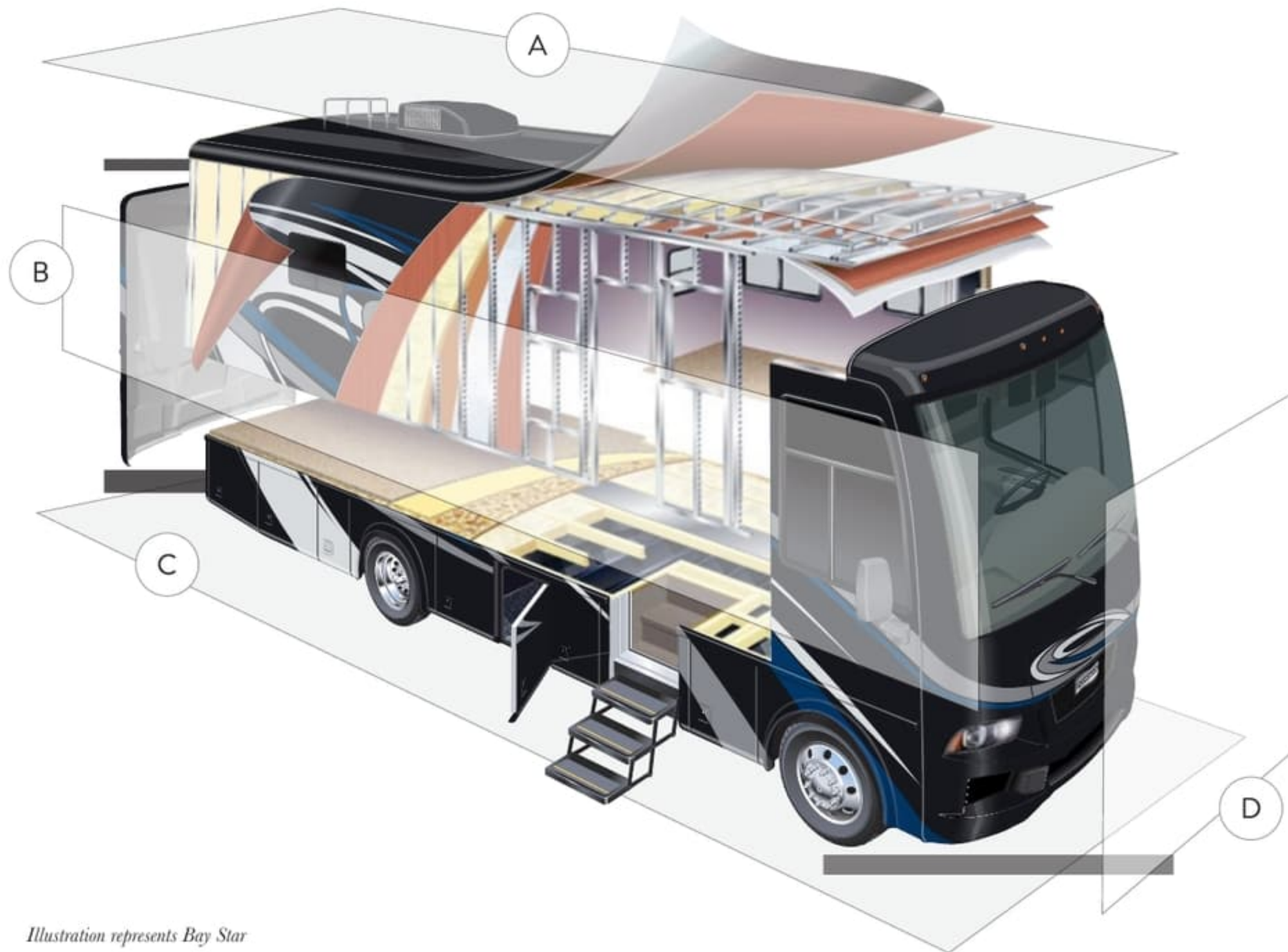


Illustration represents Bay Star

A. ROOF

BriteTEK™ Roof with Walkable Decking

Batten Insulation

A/C Ducting

16" on Center Aluminum Framing

Kraft Paper Vapor Barrier

5/8" Bead Foam

3/16" Panel

Padded Vinyl Overlay

B. SIDEWALL

Interior Wall Panel

5/8" Bead Foam

Kraft Paper Vapor Barrier

Batten Insulation

Composite One-Piece Gelcoat Exterior Sidewall

Aluminum Framing

C. FLOOR

Carpet

Batten Insulation

Carpet Padding

16" on Center Wood Framing

5/8" Floor Decking

Polyethylene Moisture Barrier

D. EXTERIOR

13.5M Penguin Central Air Conditioner

One-Piece Windshield

Frameless, Tinted Safety Glass Windows

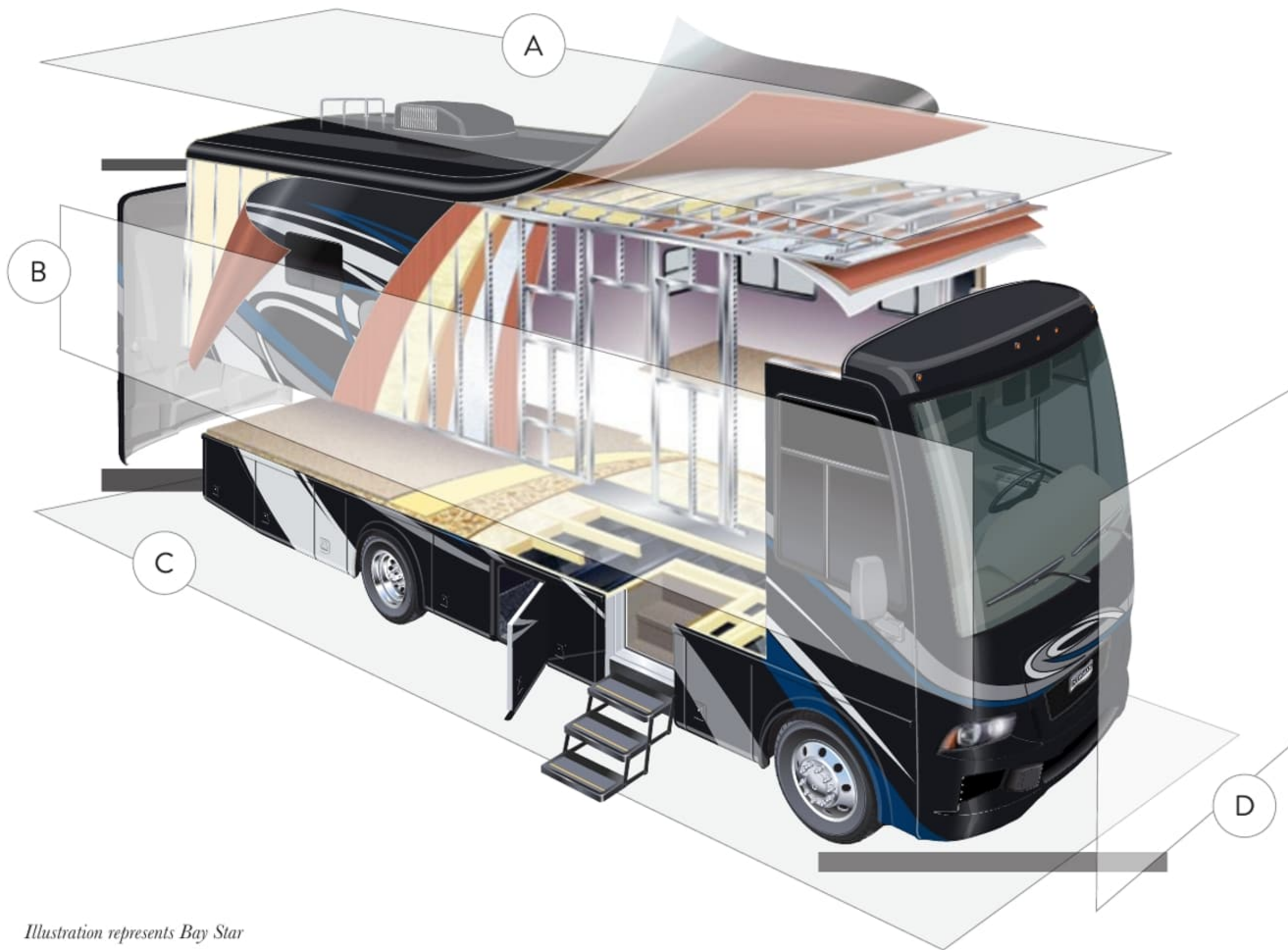


Illustration represents Bay Star

A. ROOF

BriteTEK™ Roof with Walkable Decking

Batten Insulation

A/C Ducting

16" on Center Aluminum Framing

Kraft Paper Vapor Barrier

5/8" Bead Foam

3/16" Panel

Padded Vinyl Overlay

B. SIDEWALL

Interior Wall Panel

5/8" Bead Foam

Kraft Paper Vapor Barrier

Batten Insulation

Composite One-Piece Gelcoat Exterior Sidewall

Aluminum Framing

C. FLOOR

Carpet

Carpet Padding

5/8" Floor Decking

Batten Insulation

16" on Center Wood Framing

Polyethylene Moisture Barrier

D. EXTERIOR

13.5M Penguin Central Air Conditioner

One-Piece Windshield

Frameless, Tinted Safety Glass Windows

OUR PARTNERS

Newmar Quality Begins With The Company We Keep

You deserve class-leading performance from names you can trust. That's why we only work with suppliers dedicated to providing our customers with unrivaled quality, comfort, and support.



BASF

The Coatings division of BASF is a global expert in the development and production of innovative and sustainable OEM and refinish coatings that deliver solutions beyond your imagination.



INDUSTRIAL FINISHES

Industrial Finishes has supported RV manufacturers for over four decades. The Industrial Finishes paint process delivers uncompromising quality, providing your coach with a true "Masterpiece" finish.



FLEXSTEEL RECREATION

Flexsteel Recreation offers innovative furniture designed for a life that rarely sits still. Comfortable and space-saving, Flexsteel furniture ensures your RV is always ready for dining, sleeping, or hosting guests.



SONY

Beautifully designed Sony TVs and Blu-ray players combine to deliver an immersive picture and true-to-life sound. Revolutionize every aspect of your in-coach entertainment experience with Sony.



Driven By You

FREIGHTLINER CUSTOM CHASSIS

Freightliner Custom Chassis are renowned for their exceptional ride, excellent maneuverability, advanced chassis technology, and nationwide 24/7 factory-direct support.



SPARTAN MOTORS

Spartan Motors is an American company with over 30 years of experience designing and manufacturing the premier motorhome chassis, which provides superior performance, exceptional safety ratings, and industry-leading technology.

OUR PARTNERS

Newmar Quality Begins With The Company We Keep

You deserve class-leading performance from names you can trust. That's why we only work with suppliers dedicated to providing our customers with unrivaled quality, comfort, and support.



BASF

The Coatings division of BASF is a global expert in the development and production of innovative and sustainable OEM and refinish coatings that deliver solutions beyond your imagination.



INDUSTRIAL FINISHES

Industrial Finishes has supported RV manufacturers for over four decades. The Industrial Finishes paint process delivers uncompromising quality, providing your coach with a true "Masterpiece" finish.



FLEXSTEEL[®]
RECREATION

FLEXSTEEL RECREATION

Flexsteel Recreation offers innovative furniture designed for a life that rarely sits still. Comfortable and space-saving, Flexsteel furniture ensures your RV is always ready for dining, sleeping, or hosting guests.



SONY

Beautifully designed Sony TVs and Blu-ray players combine to deliver an immersive picture and true-to-life sound. Revolutionize every aspect of your in-coach entertainment experience with Sony.



Driven By You

FREIGHTLINER CUSTOM CHASSIS

Freightliner Custom Chassis are renowned for their exceptional ride, excellent maneuverability, advanced chassis technology, and nationwide 24/7 factory-direct support.



SPARTAN MOTORS

Spartan Motors is an American company with over 30 years of experience designing and manufacturing the premier motorhome chassis, which provides superior performance, exceptional safety ratings, and industry-leading technology.



OUR PEOPLE MAKE *the* DIFFERENCE

*Newmar was founded in 1968 for one simple reason:
to build a better RV.*

*Since then, we've focused our efforts and energy on creating
residential-quality "homes on wheels," complete with
handmade cabinetry and designer décors.*

*And every Newmar is handcrafted one at a time by men and
women who have spent an average of eight years assembling
them, resulting in superior-quality coaches that fully surpass
their mass-produced competition.*

*Here, we don't just take the responsibility of designing,
engineering, and constructing your motorhome seriously, we
take it personally. Because in the end, our goal is not to win
your trust, but earn it. Not once, but every single time you
hit the road.*

Join us, and discover the Newmar difference for yourself.





OUR PEOPLE MAKE *the* DIFFERENCE

*Newmar was founded in 1968 for one simple reason:
to build a better RV.*

*Since then, we've focused our efforts and energy on creating
residential-quality "homes on wheels," complete with
handmade cabinetry and designer décors.*

*And every Newmar is handcrafted one at a time by men and
women who have spent an average of eight years assembling
them, resulting in superior-quality coaches that fully surpass
their mass-produced competition.*

*Here, we don't just take the responsibility of designing,
engineering, and constructing your motorhome seriously, we
take it personally. Because in the end, our goal is not to win
your trust, but earn it. Not once, but every single time you
hit the road.*

Join us, and discover the Newmar difference for yourself.



WHEN YOU KNOW
the DIFFERENCE



Newmar Corporation | 355 N Delaware St | PO Box 30 | Nappanee, IN 46550-0030 | 574-773-7791 | Fax 574-773-2895

NewmarCorp.com

WHEN YOU KNOW
the DIFFERENCE



Colton RV & Marine
3122 Niagara Falls Blvd
North Tonawanda, NY 14120
(716) 694-0188
www.ColtonRV.com

Colton RV & Marine
3443 Southwestern Blvd.
Orchard Park, NY 14127
(716) 957-3250
www.Coltonrv.com

Newmar Corporation | 355 N Delaware St | PO Box 30 | Nappanee, IN 46550-0030 | 574-773-7791 | Fax 574-773-2895

NewmarCorp.com