



SPORTTREK TOURING EDITION

Luxury Travel Trailers



Designed for campers, by campers.



SPORTTREK TOURING EDITION

Luxury Travel Trailers



Designed for campers, by campers.

SPORTTREK TOURING EDITION

Touring's kitchens are elegant, yet functional, and exhibit all the features of your home kitchen. Island units boast an appliance hutch, and all offer generous storage, skylights with shades, lift-out utility tray and waste basket storage.

(STT333VMI shown)

SportTrek Touring Edition is all you could desire and more. You'll soon find this to be your home away from home with modern farmhouse cabinetry and residential size appliances.

KEY FEATURES:

- Luxury travel trailer with modern farmhouse design
- All floorplans have bedroom slideouts, including seven with king beds
- Solid surface kitchen countertops
- Automotive painted full fiberglass front cap with panoramic automotive front window
- Eight floorplans with outside kitchens
- Two fireplaces producing up to 9,500 BTUs of electric heat

SportTrek Touring STT333VMI, shown in Ash Décor, boasts an island kitchen with solid surface countertop and extremely comfortable seating accommodations.



Bedrooms offer barn-style door(s), storage galore, upgraded foam mattress, USB and 110V access above the bed, CPAP-sized shelf with 110V outlet, and TV/satellite connections. In addition, two gas struts assist in lifting the bed to access under-bed storage. (STT333VMI shown)



Living spaces are a dream, with 30-inch fireplaces in the living room and master bedroom. TVs are either 40-inch or 50-inch, depending on floorplan (STT333VMI shown with 50" TV).



Most models feature a cozy window seat in the master bedroom, with additional storage under the bench to maximize the space. (STT343VIK shown)

SPORTTREK TOURING EDITION

Touring's kitchens are elegant, yet functional, and exhibit all the features of your home kitchen. Island units boast an appliance hutch, and all offer generous storage, skylights with shades, tilt-out utility tray and waste basket storage. (STT333VMI shown)



SportTrek Touring Edition is all you could desire and more. You'll soon find this to be your home away from home with modern farmhouse cabinetry and residential size appliances.

KEY FEATURES:

- Luxury travel trailer with modern farmhouse design
- All floorplans have bedroom slideouts, including seven with king beds
- Solid surface kitchen countertops
- Automotive painted full fiberglass front cap with panoramic automotive front window
- Eight floorplans with outside kitchens
- Two fireplaces producing up to 9,500 BTUs of electric heat



SportTrek Touring STT333VMI, shown in Ash Décor, boasts an island kitchen with solid surface countertop and extremely comfortable seating accommodations.



Bedrooms offer barn-style door(s), storage galore, upgraded foam mattress, USB and 110V access above the bed, CPAP-sized shelf with 110V outlet, and TV/satellite connections. In addition, two gas struts assist in lifting the bed to access under-bed storage. (STT333VMI shown)



Living spaces are a dream, with 30-inch fireplaces in the living room and master bedroom. TVs are either 40-inch or 50-inch, depending on floorplan (STT333VMI shown with 50" TV).



Most models feature a cozy window seat in the master bedroom, with additional storage under the bench to maximize the space. (STT343VIK shown)

SPORTREK TOURING EDITION FLOORPLANS



STT272VRK

UVW - 7,220 lbs. | Exterior Length - 31' 6" | Sleeps - 6



STT302VRB

UVW - 7,500 lbs. | Exterior Length - 33' 3" | Sleeps - 4



STT312VBH

UVW - 7,980 lbs. | Exterior Length - 35' 9" | Sleeps - 10



STT333VFK

UVW - 9,040 lbs. | Exterior Length - 36' 8" | Sleeps - 4



STT333VMI

UVW - 8,850 lbs. | Exterior Length - 36' 8" | Sleeps - 4



STT336VRK

UVW - 8,860 lbs. | Exterior Length - 37' 8" | Sleeps - 4



STT343VBH

UVW - 9,040 lbs. | Exterior Length - 37' 8" | Sleeps - 11

SPORTTREK TOURING EDITION FLOORPLANS



STT272VRK

UVW - 7,220 lbs. | Exterior Length - 31' 6" | Sleeps - 6



STT302VRB

UVW - 7,500 lbs. | Exterior Length - 33' 3" | Sleeps - 4



STT312VBH

UVW - 7,980 lbs. | Exterior Length - 35' 9" | Sleeps - 10



STT333VFK

UVW - 9,040 lbs. | Exterior Length - 36' 8" | Sleeps - 4



STT333VMI

UVW - 8,850 lbs. | Exterior Length - 36' 8" | Sleeps - 4



STT336VRK

UVW - 8,860 lbs. | Exterior Length - 37' 8" | Sleeps - 4



STT343VBH

UVW - 9,040 lbs. | Exterior Length - 37' 8" | Sleeps - 11

SPORTREK TOURING EDITION FLOORPLANS



STT343VIB

UVW – 8,950 lbs. | Exterior Length – 38' 2" | Sleeps – 11



STT343VIK

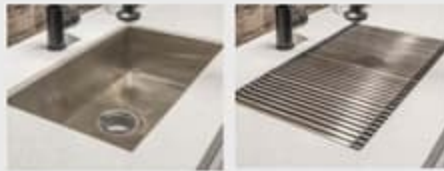
UVW – 8,970 lbs. | Exterior Length – 37' 5" | Sleeps – 4



10 CU FT double-door refrigerator with antique white cabinet front.



Flush-mounted 21-inch stove with glass cover and accent lighting.



Sink cover drains food and dishes, and rolls out of the way for sink use.



Cozy X2 – standard 30-inch bedroom fireplace produces 5,000 BTUs of electric heat, plus an additional standard 30-inch living room fireplace provides ambience throughout the trailer.

Safe Tek Box hidden charging station and valuables storage.



Tri-fold sofa is easy to convert and comfortable, whether used as a sofa or a bed (VBF).



Pantry provides tons of storage with adjustable shelves.

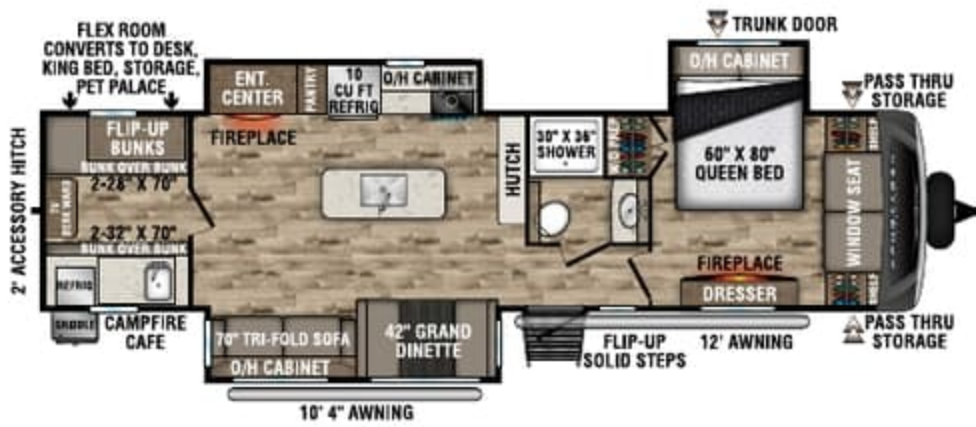


Theater seating w/heat, massage & USB ports (VBF).

	STT272VRK	STT302VRB	STT312VBH	STT333VFK	STT333VMI	STT336VRK	STT343VBH	STT343VIB	STT343VIK
UVW (Unloaded Vehicle Weight)*	7,220	7,500	7,980	9,040	8,850	8,860	9,040	8,950	8,970
Dry Hitch Weight*	780	920	950	1,120	1,220	1,110	1,210	1,210	1,150
Dry Axle Weight*	6,440	6,580	7,030	7,920	7,630	7,750	7,830	7,740	7,820
CCC (Cargo Carrying Capacity)	2,045	1,780	1,360	1,760	1,960	1,935	1,755	1,838	1,815
Interior Height	82"	82"	82"	82"	82"	82"	82"	82"	82"
Exterior Height with A/C	11' 4"	11' 4"	11' 4"	11' 6"	11' 6"	11' 6"	11' 6"	11' 6"	11' 6"
Exterior Width	96"	96"	96"	96"	96"	96"	96"	96"	96"
Exterior Length**	31' 6"	33' 3"	35' 9"	36' 8"	36' 8"	37' 8"	37' 8"	38' 2"	37' 5"
Refrigerator (Cubic Feet)	10	10	10	10	10	10	10	10	10
Water Heater Cap. (Gal. G/E w/DSI)	6	6	6	6	6	6	6	6	6
Fresh Water Capacity (Gallon)	45	45	45	45	45	45	45	45	45
Black Water Capacity (Gallon)	34.5	34.5	34.5	34.5	34.5	34.5	69	34.5	34.5
Gray Water Capacity (Gallon)	69	69	34.5	69	34.5	69	69	34.5	34.5
LP Gas Capacity (Lbs.)	60	60	60	60	60	60	60	60	60
Furnace BTUs (1,000s)	30	30	30	30	30	30	30	30	30
Tire Size	15"	15"	15"	15"	15"	15"	15"	15"	15"
Awning	16'	20'	20'	16'/10' 4"	16'/10' 4"	15'/10' 4"	20'	12'/10' 4"	14'/10' 4"

*This weight reflects the rolling average unit weight for each model. Your trailer weight will vary according to optional equipment.
 **Exterior length is measured from rear of bumper to leading edge of coupler.

SPORTREK TOURING EDITION FLOORPLANS



STT343VIB

UVW – 8,950 lbs. | Exterior Length – 38' 2" | Sleeps – 11



STT343VIK

UVW – 8,970 lbs. | Exterior Length – 37' 5" | Sleeps – 4



10 CU FT double-door refrigerator with antique white cabinet front.



Flush-mounted 21-inch stove with glass cover and accent lighting.



Sink cover drains food and dishes, and rolls out of the way for sink use.



Cozy X2 – standard 30-inch bedroom fireplace produces 5,000 BTUs of electric heat, plus an additional standard 30-inch living room fireplace provides ambience throughout the trailer.

Safe Tek Box hidden charging station and valuables storage.



Pantry provides tons of storage with adjustable shelves.



Tri-fold sofa is easy to convert and comfortable, whether used as a sofa or a bed (VBF).



Theater seating w/heat, massage & USB ports (VBF).

	STT272VRK	STT302VRB	STT312VBH	STT333VFK	STT333VMI	STT336VRK	STT343VBH	STT343VIB	STT343VIK
UVW (Unloaded Vehicle Weight)*	7,220	7,500	7,980	9,040	8,850	8,860	9,040	8,950	8,970
Dry Hitch Weight*	780	920	950	1,120	1,220	1,110	1,210	1,210	1,150
Dry Axle Weight*	6,440	6,580	7,030	7,920	7,630	7,750	7,830	7,740	7,820
CCC (Cargo Carrying Capacity)	2,045	1,780	1,360	1,760	1,960	1,935	1,755	1,838	1,815
Interior Height	82"	82"	82"	82"	82"	82"	82"	82"	82"
Exterior Height with A/C	11' 4"	11' 4"	11' 4"	11' 6"	11' 6"	11' 6"	11' 6"	11' 6"	11' 6"
Exterior Width	96"	96"	96"	96"	96"	96"	96"	96"	96"
Exterior Length**	31' 6"	33' 3"	35' 9"	36' 8"	36' 8"	37' 8"	37' 8"	38' 2"	37' 5"
Refrigerator (Cubic Feet)	10	10	10	10	10	10	10	10	10
Water Heater Cap. (Gal. G/E w/DSI)	6	6	6	6	6	6	6	6	6
Fresh Water Capacity (Gallon)	45	45	45	45	45	45	45	45	45
Black Water Capacity (Gallon)	34.5	34.5	34.5	34.5	34.5	34.5	69	34.5	34.5
Gray Water Capacity (Gallon)	69	69	34.5	69	34.5	69	69	34.5	34.5
LP Gas Capacity (Lbs.)	60	60	60	60	60	60	60	60	60
Furnace BTUs (1,000s)	30	30	30	30	30	30	30	30	30
Tire Size	15"	15"	15"	15"	15"	15"	15"	15"	15"
Awning	16'	20'	20'	16'/10' 4"	16'/10' 4"	15'/10' 4"	20'	12'/10' 4"	14'/10' 4"

*This weight reflects the rolling average unit weight for each model. Your trailer weight will vary according to optional equipment.

**Exterior length is measured from rear of bumper to leading edge of coupler.

ELITE PACKAGE 1.4

Venture LevelMate PRO
Go Power roof-mounted solar prep
Tucked bumper w/2" accessory hitch
Live edge accent tops
Rear backup lighting
Exterior docking station
Venture connectivity board w/
bluetooth control
Modern farmhouse design
WIFI prep
Entry door w/clear-view window
HDMI/DVD stereo w/5.1 AMP USB charger
Western Pine board accent walls
New cabinet pulls
40" or 50" smart TV w/swing arm
Modern farmhouse-style passage doors
RV Airflow System w/up to 40% more
A/C air flow
Oval stainless steel bathroom sink
Heirloom comforter w/pillow package
Serta Foam King or Queen mattress
21" Furrion Oven
10 CU FT double-door refrigerator
Large single-bowl under-mount
stainless steel kitchen sink
(2) dish drying sink covers
Venture cutting board
Fiberglass slide out end walls
Pet defender screen protector
Beaflor slide out floors (no carpet)

WEATHER-SHIELD PACKAGE (MANDATORY)

Forced air heated & enclosed
underbelly
Enclosed gate valves
360 degree residential fiberglass
insulation
360 degree radiant foil insulation
Radiant foil-wrapped tanks & reflective
PVC roof membrane w/ limited lifetime
warranty
Azdel Onboard composite panels

SPORTTREK TOURING PACKAGE (MANDATORY)

Pass-thru motion light
5/8" tongue & groove plywood
floor decking
NXG Huck bolt frame
EZ Lube hubs

Under-mount spare tire
Rear ladder
Walkable roof
Hot & cold outside shower
Black tank flush system
Furrion marine-grade detachable
power cord
Prewired for backup camera
Stabilizer accent lighting
LED lighted power awning
Keyed Alike key system
Battery disconnect
Safe-Tek hidden storage w/
charging center
82" interior ceiling
72" slideout height
Flip-up solid step
Automotive panoramic front window
Window seat (most models)
Friction hinge entry door
Interior entry door motion light
6 GAL Gas/Electric DSI water heater
15K BTU A/C, 50A service w/2nd
A/C prep
Full-extension ball bearing drawer guides
Stainless steel appliances
3-burner high-output range w/flush-
mount glass cover
Microwave

EXTERIOR LUXURY PACKAGE (MANDATORY)

Painted fiberglass front cap
w/integrated LED light
Upgraded graphics package
BAL independent electric stabilizer jacks
Lighted power tongue jack
Tinted frameless windows
Slam-latch baggage doors
w/magnetic catches
Motion-activated pass-thru storage light
Foldup trek step

Ash Décor

Venture bottle opener/dog tie down
(2) 30 LB LP tanks w/cover
Screen Shot screen door

INTERIOR LUXURY PACKAGE (MANDATORY)

Solid-surface kitchen countertops
Designer valances w/fabric nightshades
Solid hardwood cabinet doors
& drawer faces
Motion-activated interior entry light
Beaflor wood plank flooring w/7-year
limited warranty
Porcelain foot-flush toilet
Deluxe tri-fold sofa & theater seats
(varies by model)
King bed master suite (queen 343VBH,
343VIB)
Washer/dryer prep (VBF)
Heat & massage in theater seating (VBF)
(2) 30" frameless fireplaces

OPTIONS

LevelMate PRO leveling system
Off-the-Grid solar PKG, incl. (1) 100W
panel & controller
Tri-fold sofa
2nd A/C
40" smart TV (including swing arm
bracket) (272, 302, 312, 343VIB, 343VBH)
50" smart TV (including swing arm
bracket) (333s, 336, 343VIK)
King-U sofa (super-slide models only)
Theater seating w/heat, massage, & USB
ports IPO tri-fold (272VRK, 302, 312)
Swing-away bumper-mount griddle
Furrion observation/backup camera
Booth dinette, table, & chairs
Maxx Air bedroom fan
8 CU FT gas/electric refrigerator

Slate Décor

ELITE PACKAGE 1.4

Venture LevelMate PRO
Go Power roof-mounted solar prep
Tucked bumper w/2" accessory hitch
Live edge accent tops
Rear backup lighting
Exterior docking station
Venture connectivity board w/
bluetooth control
Modern farmhouse design
WIFI prep
Entry door w/clear-view window
HDMI/DVD stereo w/5.1 AMP USB charger
Western Pine board accent walls
New cabinet pulls
40" or 50" smart TV w/swing arm
Modern farmhouse-style passage doors
RV Airflow System w/up to 40% more
A/C air flow
Oval stainless steel bathroom sink
Heirloom comforter w/pillow package
Serta Foam King or Queen mattress
21" Furrion Oven
10 CU FT double-door refrigerator
Large single-bowl under-mount
stainless steel kitchen sink
(2) dish drying sink covers
Venture cutting board
Fiberglass slide out end walls
Pet defender screen protector
Beauflor slide out floors (no carpet)

WEATHER-SHIELD PACKAGE (MANDATORY)

Forced air heated & enclosed
underbelly
Enclosed gate valves
360 degree residential fiberglass
insulation
360 degree radiant foil insulation
Radiant foil-wrapped tanks & reflective
PVC roof membrane w/ limited lifetime
warranty
Azdel Onboard composite panels

SPORTREK TOURING PACKAGE (MANDATORY)

Pass-thru motion light
5/8" tongue & groove plywood
floor decking
NXG Huck bolt frame
EZ Lube hubs

Under-mount spare tire
Rear ladder
Walkable roof
Hot & cold outside shower
Black tank flush system
Furrion marine-grade detachable
power cord
Prewired for backup camera
Stabilizer accent lighting
LED lighted power awning
Keyed Alike key system
Battery disconnect
Safe-Tek hidden storage w/
charging center
82" interior ceiling
72" slideout height
Flip-up solid step
Automotive panoramic front window
Window seat (most models)
Friction hinge entry door
Interior entry door motion light
6 GAL Gas/Electric DSI water heater
15K BTU A/C, 50A service w/2nd
A/C prep
Full-extension ball bearing drawer guides
Stainless steel appliances
3-burner high-output range w/flush-
mount glass cover
Microwave

EXTERIOR LUXURY PACKAGE (MANDATORY)

Painted fiberglass front cap
w/integrated LED light
Upgraded graphics package
BAL independent electric stabilizer jacks
Lighted power tongue jack
Tinted frameless windows
Slam-latch baggage doors
w/magnetic catches
Motion-activated pass-thru storage light
Foldup trek step

Ash Décor

Venture bottle opener/dog tie down
(2) 30 LB LP tanks w/cover
Screen Shot screen door

INTERIOR LUXURY PACKAGE (MANDATORY)

Solid-surface kitchen countertops
Designer valances w/fabric nightshades
Solid hardwood cabinet doors
& drawer faces
Motion-activated interior entry light
Beauflor wood plank flooring w/7-year
limited warranty
Porcelain foot-flush toilet
Deluxe tri-fold sofa & theater seats
(varies by model)
King bed master suite (queen 343VBH,
343VIB)
Washer/dryer prep (VBF)
Heat & massage in theater seating (VBF)
(2) 30" frameless fireplaces

OPTIONS

LevelMate PRO leveling system
Off-the-Grid solar PKG, incl. (1) 100W
panel & controller
Tri-fold sofa
2nd A/C
40" smart TV (including swing arm
bracket) (272, 302, 312, 343VIB, 343VBH)
50" smart TV (including swing arm
bracket) (333s, 336, 343VIK)
King-U sofa (super-slide models only)
Theater seating w/heat, massage, & USB
ports IPO tri-fold (272VRK, 302, 312)
Swing-away bumper-mount griddle
Furrion observation/backup camera
Booth dinette, table, & chairs
Maxx Air bedroom fan
8 CU FT gas/electric refrigerator

Slate Décor

EXTERIOR FEATURES



Multi-directional Power awning with LED lights

Frameless windows

Slam latch baggage doors with magnetic catches

Painted full fiberglass front cap w/panoramic automotive front window



All SportTrek Tourings feature a solid flip-up step and friction-hinged entry door with Screen Shot screen door.



This Campfire Café outside kitchen includes large refrigerator, pullout griddle, sink with hot and cold water and tons of storage areas. It's standard on the 333VFK, 333VMI, 336VRK and the 343VIK.



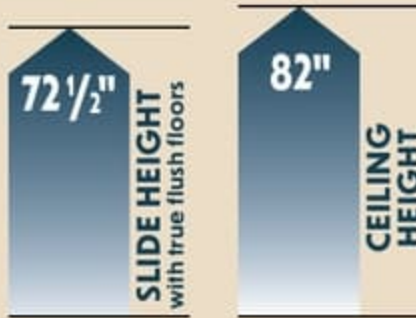
4 power stabilizer jacks, each with its own independent motor.



2-inch accessory hitch is integrated into the frame.



Available Off-the-Grid solar package.



LevelMate PRO lets you level your unit on the first try! This feature calculates and displays the height required to achieve a perfectly level position.



SportTrek Touring's Weather Shield features a radiant foil barrier, forced heat, enclosed underbelly, and enclosed gate valves.



SPORTTREK TOURING CONSTRUCTION



985 N 900 W | Shipshewana, IN 46565 | www.venture-rv.com

Due to continual research and advances, manufacturer reserves the right to change specifications, design, price, and equipment without notice, and assumes no responsibility for any error in this literature.

Some items shown are not included as standard or optional equipment.

©2022 Venture | 00/00/22 | 00M

EXTERIOR FEATURES



Multi-directional Power awning with LED lights

Frameless windows

Slam latch baggage doors with magnetic catches

Painted full fiberglass front cap w/panoramic automotive front window



All SportTrek Tourings feature a solid flip-up step and friction-hinged entry door with Screen Shot screen door.



This Campfire Café outside kitchen includes large refrigerator, pullout griddle, sink with hot and cold water and tons of storage areas. It's standard on the 333VFK, 333VMI, 336VRK and the 343VIK.



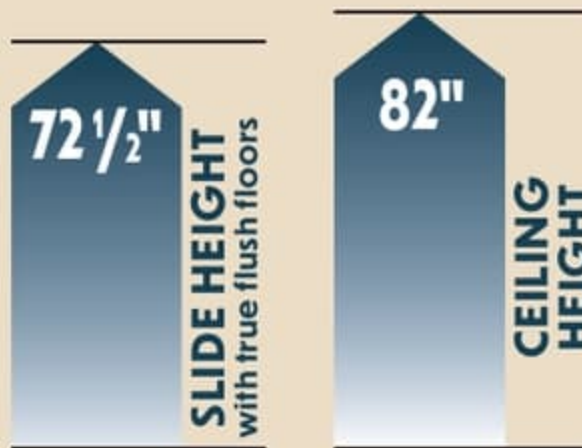
4 power stabilizer jacks, each with its own independent motor.



2-Inch accessory hitch is integrated into the frame.



Available Off-the-Grid solar package.



LevelMate PRO lets you level your unit on the first try! This feature calculates and displays the height required to achieve a perfectly level position.



SportTrek Touring's Weather Shield features a radiant foil barrier, forced heat, enclosed underbelly, and enclosed gate valves.



SPORTTREK TOURING CONSTRUCTION



985 N 900 W | Shipshewana, IN 46565 | www.venture-rv.com

Due to continual research and advances, manufacturer reserves the right to change specifications, design, price, and equipment without notice, and assumes no responsibility for any error in this literature. Some items shown are not included as standard or optional equipment.

©2022 Venture | 00/00/22 | 00M

Colton RV & Marine
3122 Niagara Falls Blvd
North Tonawanda, NY 14120
(716) 694-0188
www.ColtonRV.com

Colton RV & Marine
3443 Southwestern Blvd.
Orchard Park, NY 14127
(716) 957-3250
www.Coltonrv.com