

Jayco | Melbourne & Melbourne Prestige Class C Motorhome



MELBOURNE & MELBOURNE PRESTIGE

COMPACT COMFORT AND LUXURY



2+3
YEAR | YEAR
WARRANTY

INTERIOR DESIGN



HUNTINGTON



Wood



Floor



Countertop



Main Fabric



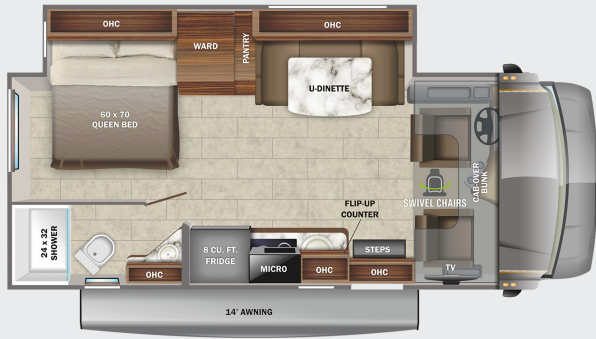
Furniture



MELBOURNE

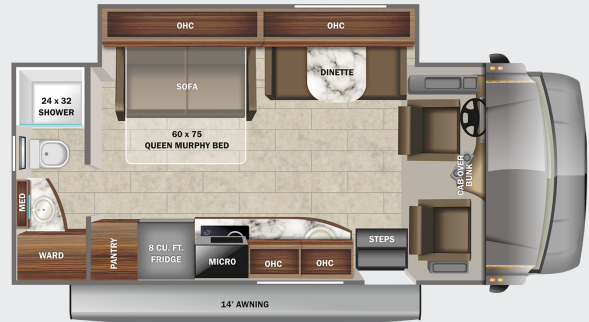
24L

OPTIONS: A, B



24R

OPTIONS: A, B

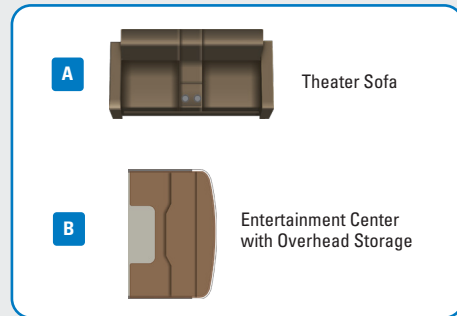


24T

OPTIONS: B



OPTIONS



EXTERIOR SELECTIONS



Alloy Full-Body Paint



Titanium Full-Body Paint



Standard Graphics Package

STANDARDS & OPTIONS

CUSTOMER VALUE PACKAGE

One-piece, seamless, fiberglass front cap
 Frameless windows
 Heated holding tanks (12V pads)
 Heated, remote-controlled, side-view mirrors
 Electric patio awning with LED lights
 Backup and side-view cameras
 Keyless cab entry
 Sony® infotainment center with Apple®
 CarPlay™ and Android Auto™
 Swivel driver and passenger seats
 with boosters

DRIVING

Mercedes-Benz® 3500 chassis with
 170 in. wheelbase
 GVWR- 11,030 lb.
 GCWR- 15,250 lb.
 V-6 Turbo 188 HP diesel engine with electronic
 fuel injection and 325 ft.-lb. torque
 7-speed automatic transmission
 220-amp alternator
 E-rated highway tires- 215/85R16
 Front and rear disc, 4-wheel anti-lock brakes
 5,000 lb. rear hitch receiver with dual
 connector 7-pin plug
 12V chassis battery
 24.5 gal. fuel tank
 5.8 gal. DEF tank
 Driver and passenger airbags
 Power windows and door locks
 Tilt steering wheel
 A/C and cruise control
 Auxiliary start switch
 Privacy curtains for cab area

EXTERIOR

StrongholdVBL™ roof, floor and sidewalls
 Bead-foam insulation (R-24 max roof, R-9
 max floor, R-5 max walls)
 TPO laminated roof

Fiberglass running boards
 Fiberglass exterior walls with vinyl graphics
 Electric stabilizer jacks
 Slideout cover awnings
 Entrance door with industry's largest
 travel-view window
 Electric-powered entrance step with
 integrated house battery compartment
 12V house battery
 Exterior utility center
 Winterization drain system
 Black tank flush
 Outside shower
 12V demand water pump
 Onan® 3,600-watt LP generator
 Transfer switch with reverse polarity protection
 30-amp electrical service
 Solar prep
 12.2 gal. propane tank (41 lb.)
 LP quick-connect hookup
 Flush-mount LED marker lights
 Third brake light
 4 in. tube bumper with sewer hose storage

INTERIOR

83 in. interior ceiling height with padded
 vinyl ceiling
 High-intensity, LED ceiling lights
 LED-lit slideout fascia
 Hardwood cabinet doors and drawers
 Ball-bearing drawer guides
 Jayco-exclusive, easy-operation legless
 dinette table (24R)
 U-shaped dinette with stow away
 pedestal legs (24L)
 12V USB charging station in dinette area
 2-point lap safety belts in all designated
 seating locations
 Pleated blackout shades
 13,500 BTU A/C
 30,000 BTU auto-ignition ducted furnace

6 gal. gas/electric water heater and water
 heater bypass
 Powered roof vent in living area with
 wall switch
 LED HD Smart Fire TV in living area
 Prep for satellite dish
 Cable TV hookup with RG-6 coax
 Digital antenna with signal booster
 8 cu. ft. gas/electric refrigerator
 Suburban 2-burner, drop-in cooktop with
 flush cover
 Convection microwave
 Stainless steel sink with wooden
 cover/cutting board
 LED-lit, pressed countertops
 Flip-up countertop extension (select models)
 Decorative kitchen backsplash
 Water filtration system
 Shower with decorative surround and skylight
 Stainless steel bathroom sink
 Toilet with foot flush
 Powered roof vent in bathroom with
 wall switch
 Queen-size bed with bedspread (24L)
 Queen-size power Murphy bed (24R)
 (2) Twin-size beds (24T)
 Bedroom TV prep
 Large wardrobes
 Overhead bunk with 750 lb. capacity and
 safety net with 300 lb. capacity
 Smoke alarm
 Carbon monoxide detector

OPTIONS

Front entertainment center with 32 in. LED TV
 3,200-watt diesel generator
 Folding windshield sun shade
 4-point hydraulic leveling jacks
 Theater seating ILO dinette (24L)
 190W solar panel with dual controller and
 second house battery

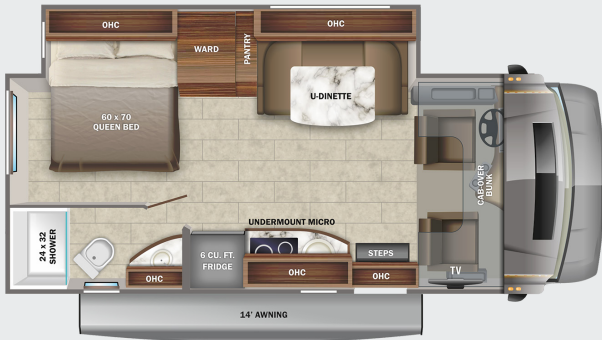
FLOORPLAN	GVWR (lbs.)	GCWR (lbs.)	WHEEL BASE	OVERALL LENGTH	EXTERIOR HEIGHT WITH SATELLITE AND A/C	EXTERIOR WIDTH	INTERIOR HEIGHT	FRESH WATER CAPACITY (gal.)	GRAY WASTE WATER CAPACITY (gal.)	BLACK WASTE WATER CAPACITY (gal.)
24L	11,030	15,250	170.3"	25' 2"	11' 5"	96"	83"	43	31	31
24R	11,030	15,250	170.3"	25' 2"	11' 5"	96"	83"	35	31	31
24T	11,030	15,250	170.3"	25' 2"	11' 5"	96"	83"	43	31	31



MELBOURNE PRESTIGE

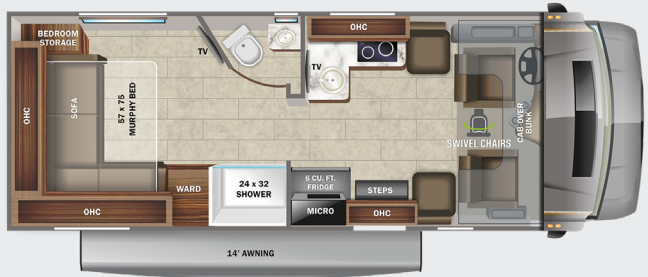
24LP

OPTIONS: A, B



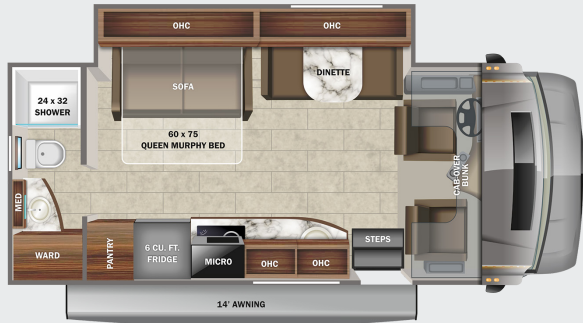
24NP

OPTIONS: B



24RP

OPTIONS: A, B



24TP

OPTIONS: B



OPTIONS

A



Theater Sofa

B



B+ Front Cap with Overhead Storage

EXTERIOR SELECTIONS



Oceanview Full-Body Paint



Oxford Full-Body Paint



Sienna Full-Body Paint



Sycamore Full-Body Paint

STANDARDS & OPTIONS

CUSTOMER VALUE PACKAGE

One-piece, seamless, fiberglass front cap
Automotive-bonded, panoramic window in front cap with power shade
Frameless windows
Backup camera
Girard® armless patio awning with LED light strip
1,000-watt inverter
Heated holding tanks (12V pads)
Truma AquaGo Comfort Plus tankless water heater
Keyless cab entry
Ultraleather® swivel driver and passenger seats with boosters

DRIVING

Premium Mercedes-Benz® 3500 chassis with 170 in. wheelbase.
Upgraded premium chassis features include:
- Active brake assist
- Chrome grill package
- Adaptive cruise control
- Heated captain's seats
- Smartphone tray with wireless charging
- Upgraded lighting package
- Rain-sensing wiper system
- Leather steering wheel
- Lane-keeping assist
- Traffic sign assist
GVWR- 11,030 lb.
GCWR- 15,250 lb.
V-6 Turbo 188 HP diesel engine with electronic fuel injection and 325 ft.-lb. torque
7-speed automatic transmission
220-amp alternator
E-rated highway tires- 215/85R16
Aluminum rims
Front and rear disc, 4-wheel anti-lock brakes
5,000 lb. rear hitch receiver with dual connector 7-pin plug
12V chassis battery
24.5 gal. fuel tank
5.8 gal. DEF tank
Heated, remote-controlled, side-view mirrors
10.25 in. integrated Mercedes-Benz® infotainment center with GPS
Driver and passenger airbags

Power windows and door locks
Tilt steering wheel
A/C and cruise control
Auxiliary start switch
Cab area privacy curtain

EXTERIOR

StrongholdVBL™ roof, floor and sidewalls
Bead-foam insulation (R-24 max roof, R-9 max floor, R-5 max walls)
One-piece, seamless, fiberglass roof
Partial fiberglass rear cap
Premium Sikkens full-body paint
Electric stabilizer jacks
Slideout cover awnings
Entrance door with industry's largest travel-view window
Electric-powered entrance step with integrated house battery compartment
(2) 12V house batteries
190W solar panel with dual controller
Aluminum skirt-hung baggage doors
12.2 gal. propane tank (41 lb.)
LP quick-connect hookup
Exterior utility center
Winterization drain system
Black tank flush
Outside shower
12V demand water pump
Onan® 3,600-watt LP generator
Transfer switch with reverse polarity protection
30-amp electrical service
Flush-mount LED marker lights
Third brake light

INTERIOR

Custom-molded ABS surround in cab-over area
Overhead bunk with 750 lb. capacity
JAYCOMMAND® powered by Firefly
80 in. interior ceiling height with padded vinyl ceiling
High-intensity, LED ceiling lights
High-gloss hardwood fascia
Tecnoform® high-gloss cabinetry
Ball-bearing drawer guides

Jayco-exclusive, easy-operation legless dinette table (24RP)
U-shaped dinette with stow away pedestal legs (24LP)
12V USB charging station in dinette area
2-point lap safety belts in all designated seating locations
Day/night roller shades
15,000 BTU low-profile A/C
20,000 BTU auto-ignition ducted furnace
Powered roof vent in living area with wall switch
LED living room TV
Blu-Ray™ player in living area
Prep for satellite dish
Cable TV hookup with RG-6 coax
Winegard 2.0 Wi-Fi/4G antenna
6 cu. ft. gas/electric/12V refrigerator
Suburban 2-burner, drop-in cooktop with flush cover
Under-mounted convection microwave
Tecnoform® high-gloss countertops
Stainless steel sink with wooden cover/cutting board
Decorative kitchen backsplash
Water filtration system
Shower with decorative surround and skylight
Stainless steel bathroom sink
Porcelain toilet with foot flush
Powered roof vent in bathroom with wall switch
Queen-size bed with bedspread (24LP)
Queen-size power Murphy bed (24RP)
(2) Twin-size beds (24TP)
Under-bed storage (select models)
Bedroom TV prep
Large wardrobes
Smoke alarm
Carbon monoxide detector

OPTIONS

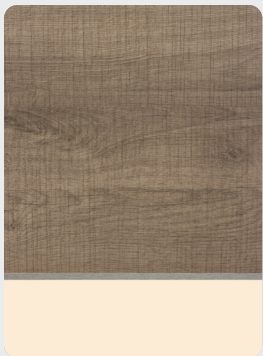
Hydraulic leveling jacks
3,200-watt diesel generator
B-Plus front cap
Theater seating ILO dinette (N/A 24TP)
Folding windshield sun shade

FLOORPLAN	GVWR (lbs.)	GCWR (lbs.)	WHEEL BASE	OVERALL LENGTH	EXTERIOR HEIGHT WITH SATELLITE AND A/C	EXTERIOR WIDTH	INTERIOR HEIGHT	FRESH WATER CAPACITY (gal.)	GRAY WASTE WATER CAPACITY (gal.)	BLACK WASTE WATER CAPACITY (gal.)
24LP	11,030	15,250	170.3"	25' 2"	10' 11"	96"	80"	43	31	31
24NP	11,030	15,250	170.3"	25' 2"	10' 11"	96"	80"	29	31	31
24RP	11,030	15,250	170.3"	25' 2"	10' 11"	96"	80"	35	31	31
24TP	11,030	15,250	170.3"	25' 2"	10' 11"	96"	80"	43	31	31

INTERIOR DESIGN



DENMARK



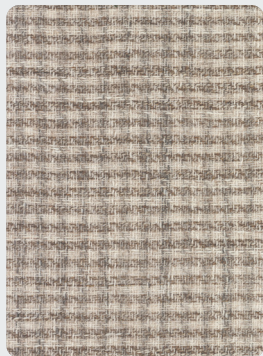
Wood



Floor



Countertop



Main Fabric



Accent Fabric

THE JAYCO DIFFERENCE



1. **One-piece seamless fiberglass front cap** for increased durability and protection
2. **750 lb. overhead bunk capacity** offers nearly 250 lbs. more than the industry average for greater safety and peace of mind
3. **Integrated electric step** maximizes ground clearance and floor space
4. **Integrated third brake light** improves safety on the road
5. **Stronghold VBL™** vacuum-bonded, laminated floor, sidewalls and roof
6. **Frameless windows** make exterior maintenance easier than ever and give the unit a sleek, modern look

2+3
YEAR | YEAR
LIMITED | STRUCTURAL
WARRANTY

TRAVEL WITH CONFIDENCE • NO ONE OFFERS A BETTER WARRANTY

At Jayco, we build our RVs to handle every adventure, then back them with our industry-leading 2+3 limited warranty. Our 2-year limited warranty has you covered for 2 camping seasons. That's 730 days. In addition, our 3-year structural limited warranty has you covered for 3 camping seasons or 1,095 days. You won't find a better limited warranty in the business, because the only strings that we attach are those that deliver the ultimate in reliability. That's the Jayco difference. So go explore. For a copy of our 2-year limited + 3-year structural limited warranty with complete terms and conditions, please contact your local Jayco dealer.

Meet your Jayco Dealer

Colton RV & Marine
3122 Niagara Falls Blvd
North Tonawanda, NY 14120
(716) 694-0188
www.ColtonRV.com

Colton RV & Marine
3443 Southwestern Blvd.
Orchard Park, NY 14127
(716) 957-3250
www.Coltonrv.com



Scan QR
code for
specification
definitions



Some specs at the time of print may include estimates.
For the most updated information, please visit Jayco.com.

Jayco, Inc. | P.O. Box 460 | Middlebury, IN 46540

See dealer for further information and prices. All information in this brochure and on www.jayco.com is the latest available at the time of publication approval. Jayco reserves the right to make changes and to discontinue models without notice or obligation. Photography may show optional equipment or props used for decoration purposes only. RVs built for sale in Canada may differ to conform to Canadian codes. JAYCO and the JAYCO BIRD IN FLIGHT are registered trademarks of Jayco, Inc. Printed in USA 3/22 ©2022 Jayco, Inc. 257068

Jayco - Part of the Jayco Family of Companies