

2016

ALLEGRO RED®



**TIFFIN**  
MOTORHOMES





SHOWN 38 QBA FLOOR PLAN WITH SILVER SAND EXTERIOR PAINT SCHEME



SHOWN 38 QBA FLOOR PLAN WITH ENGLISH CHESTNUT CABINETS & VANILLA BEAN INTERIOR



COUNTERTOP UPGRADE & BACKSLASH





ALLEGRO RED

2016

# RED means go.

Built with the quality, comfort, and affordability of our popular Allegro model, the Allegro RED is powered by the might and muscle of a Rear Engine Diesel (RED). The added benefits are impressive. Increased torque and horsepower tackle steep hills and tight turns, while better fuel efficiency lets you log more miles for less gas. Spacious floor plans extending up to 39' 8" comfortably accommodate everyone and everything including many standard luxury features.

THE QUALITY YOU TRUST WITH THE POWER YOU CRAVE.

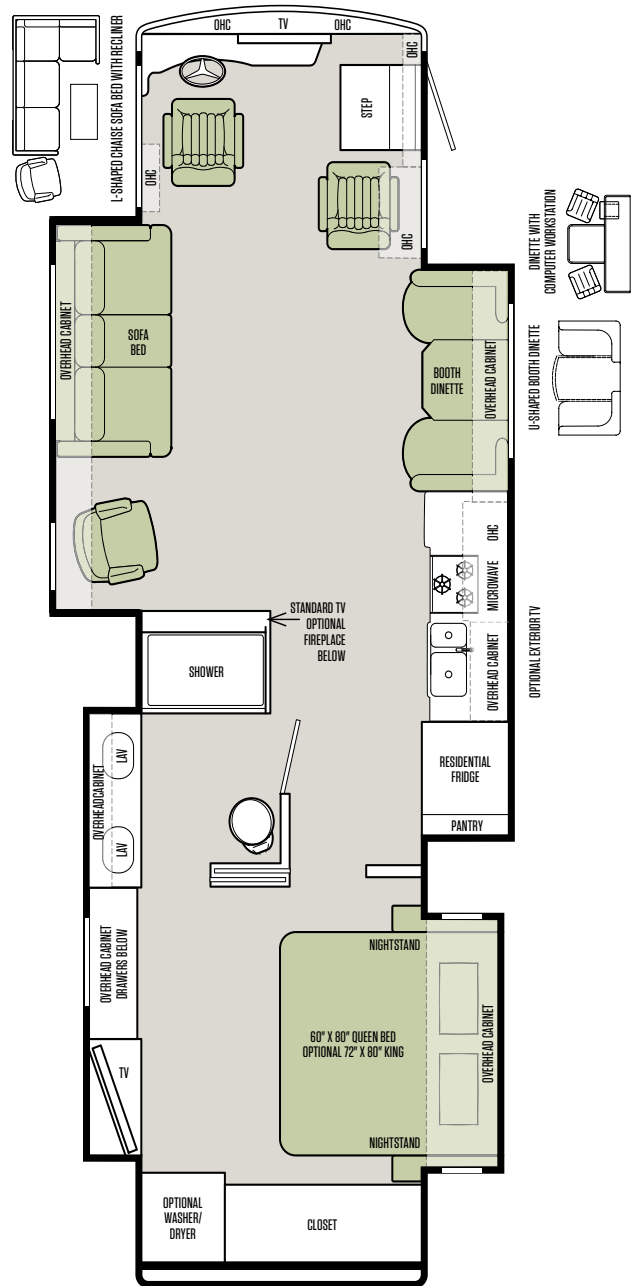
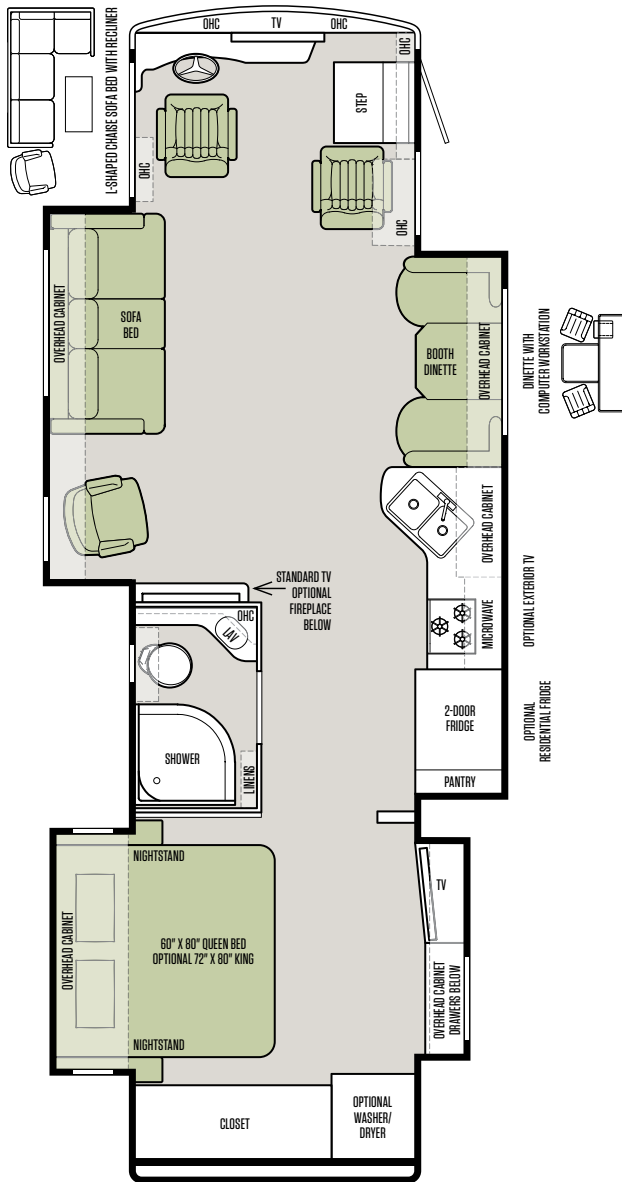


SHOWN 38 QBA FLOOR PLAN WITH ENGLISH CHESTNUT CABINETS & VANILLA BEAN INTERIOR

Tiffin floor plans: Thoughtful in every detail and in every dimension.

33 AA

37 PA

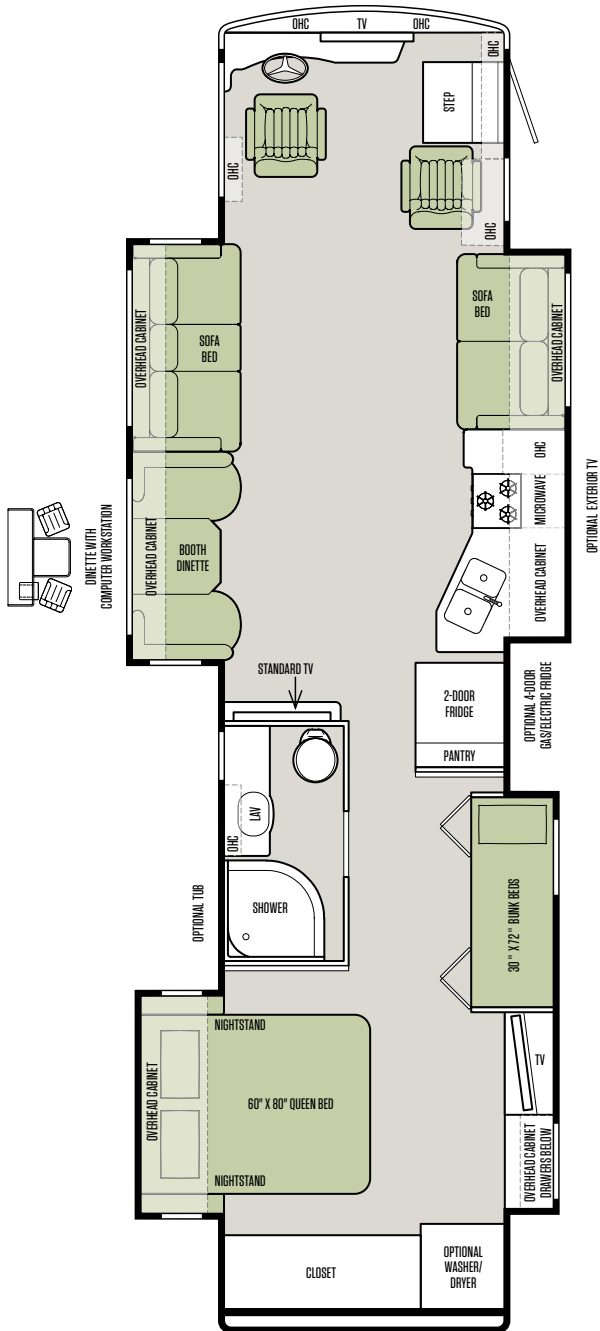


FLOOR PLANS

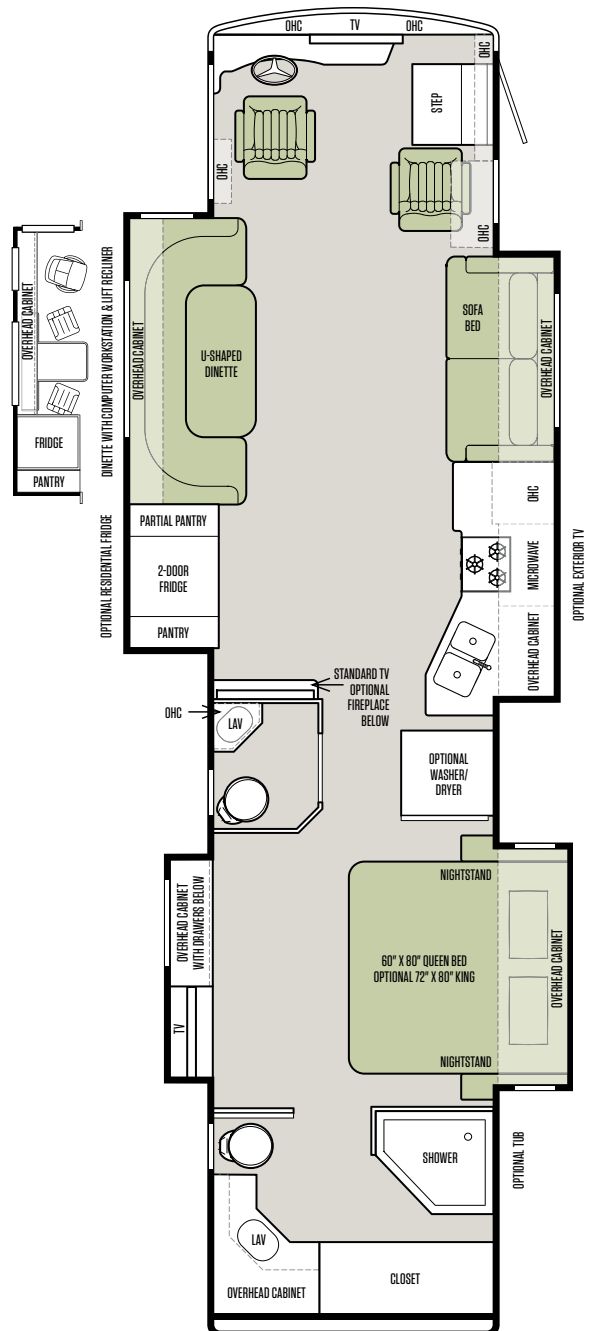


The design of every Tiffin floor plan must meet four essential criteria:  
**Maximum space.** **Optimal organization.** **Relaxation plus.** **Elegant atmosphere.**  
**MORE** plans offer your family the most comfortable layout for life on the road.

38 QBA



38 QRA



Note: If optional furniture combinations are selected, window locations may vary from diagram shown.



# Now it's time to personalize your coach.

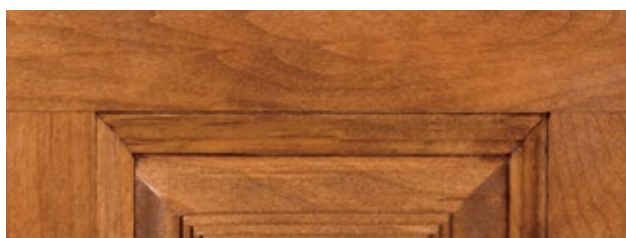
1

Start with our handcrafted hardwood cabinetry available in your choice of luxury finishes: Cordovan, English Chestnut or Mocha.

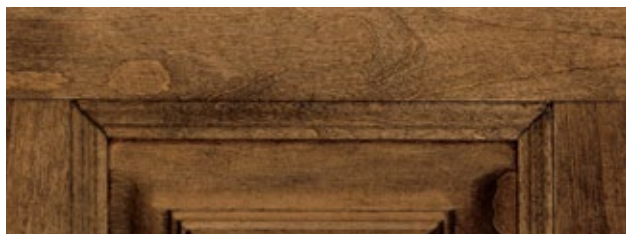
## CABINETS



CORDOVAN

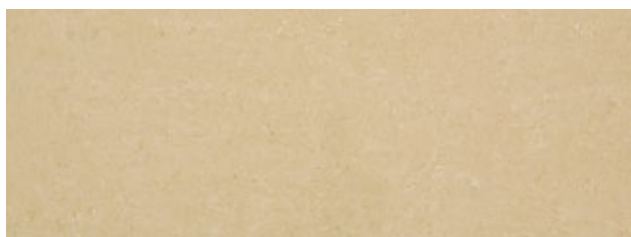


ENGLISH CHESTNUT

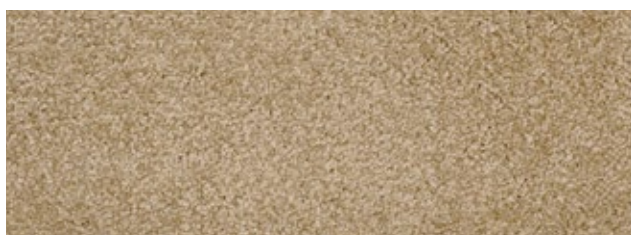


MOCHA

## STANDARD FLOORING



TILE



CARPET

2

Then, add texture with your choice of designer fabric suites: Cocoa, Irongate, or Vanilla Bean. All fabrics are treated for stain resistance.

## COCOA

### LIVING AREA & KITCHEN



PILLOWS



VALANCE

### KITCHEN



BACKSPLASH

### COUNTERTOP

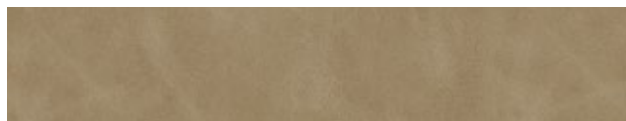


STANDARD



UPGRADE

### SOFA & COCKPIT SEATS



STANDARD LEATHER

### BEDROOM



INTERIOR DÉCOR

Express yourself by choosing fine appointments, from cabinet finishes and flooring to fabric textures for every interior. In the 2016 Allegro RED you'll be able to go in style no matter where you go.

**IRONGATE**

LIVING AREA & KITCHEN



PILLOWS



VALANCE

KITCHEN



BACKSPLASH

COUNTERTOP

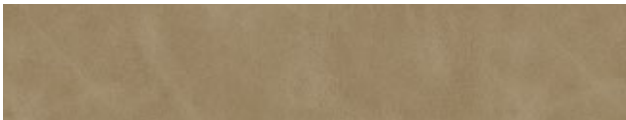


STANDARD



UPGRADE

SOFA & COCKPIT SEATS



STANDARD LEATHER

BEDROOM



**VANILLA BEAN**

LIVING AREA & KITCHEN



PILLOWS



VALANCE

KITCHEN



BACKSPLASH

COUNTERTOP

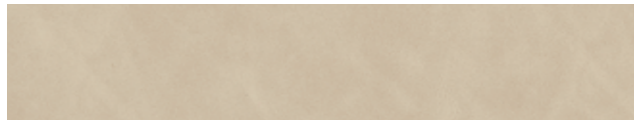


STANDARD



UPGRADE

SOFA & COCKPIT SEATS



STANDARD LEATHER

BEDROOM





EXTERIOR DÉCOR

FULL-BODY PAINT SCHEMES

PREMIUM PAINT SYSTEM

Our eight-step full-body paint system features premium grade paints sealed with four layers of superclear coat with ultraviolet protection. An additional layer of scratch-resistant plastic coating protects the front of the coach, stairwell, and entry door lock.



MAROON CORAL



SILVER SAND



OCEANSIDE



SUNLIT SAND



ROCKY MOUNTAIN BROWN



WHITE MAHOGANY



**AUTOMOTIVE**

- Standard on All Models:**
- Raised Rail Chassis Frame
  - Full Air Brakes
  - Air Ride Suspension
  - Exhaust Brake

**CHASSIS OPTIONS**

Freightliner® Rear Engine Diesel Chassis:	33 AA	37 PA	38 QBA	38 QRA
Cummins ISB 6.7-liter Electronic Diesel, Turbocharged, Aftercooled Engine	S	S	S	S
Allison 2500 MH 6-speed Automatic Transmission with Lock-up	S		S	S
Peak HP 340 HP @ 2,600 RPM	S		S	S
Peak Torque (lb. – Ft. Max Net) 660 @ 1,600 RPM	S		S	S
GAWR – Front	11,000 lb	340 HP Engine	11,000 lb	11,000 lb
GAWR – Rear	18,500 lb	Not	18,500 lb	18,500 lb
GWR	29,500 lb	Available	29,500 lb	29,500 lb
GCWR	33,000 lb	On	33,000 lb	33,000 lb
Wheel Base	198"	This	252"	252"
Tire Size	275/80R22.5	Model	275/80R22.5	275/80R22.5
Fuel Tank (Gallons) – Dual Fuel Fill	100		100	100
DEF Tank* (Gallons)	13		13	13
Alternator Amps	160		160	160
Trailer Hitch Capacity	5,000 lb		5,000 lb	5,000 lb
	<b>33 AA</b>	<b>37 PA</b>	<b>38 QBA</b>	<b>38 QRA</b>
Allison 3000 MH 6-speed Automatic Transmission with Lock-up	O	S	O	O
Peak HP 360 HP @ 2,600 RPM	O	S	O	O
Peak Torque (lb. – Ft. Max Net) 800 @ 1,800 RPM	O	S	O	O
GAWR – Front	12,000 lb	12,000 lb	12,000 lb	12,000 lb
GAWR – Rear	20,000 lb	20,000 lb	20,000 lb	20,000 lb
GWR	32,000 lb	32,000 lb	32,000 lb	32,000 lb
GCWR	42,000 lb	42,000 lb	42,000 lb	42,000 lb
Wheel Base	198"	252"	252"	252"
Tire Size	275/80R22.5	275/80R22.5	275/80R22.5	275/80R22.5
Fuel Tank (Gallons) – Dual Fuel Fill	100	100	100	100
DEF Tank* (Gallons)	13	13	13	13
Alternator Amps	160	160	160	160
Trailer Hitch Capacity	10,000 lb	10,000 lb	10,000 lb	10,000 lb

\*Diesel Exhaust Fluid (DEF) is the active component used in Selective Catalytic Reduction (SCR) engines to reduce nitrogen oxide emissions by 90% to meet EPA standards.

**WEIGHTS & MEASURES**

Overall:	33 AA	37 PA	38 QBA	38 QRA
Overall Length (Approximate**)	35' 2"	39' 2"	39' 8"	39' 8"
Overall Height with Roof Air (Maximum)	12' 10"	12' 10"	12' 10"	12' 10"
Interior Height	84"	84"	84"	84"
Overall Width	101"	101"	101"	101"
Interior Width	96"	96"	96"	96"
Fresh Water (Gallons)	90	90	90	90
Black Water (Gallons)	50	50	50	50
Grey Water (Gallons)	70	70	70	70
LPG Tank (Gallons; can only be filled to 80% capacity)	24	24	24	24
Basement Storage (Cubic Feet – Approximate)	83.75	119	160	160
Minimum Garage Height	13'	13'	13'	13'

\*\*The approximated coach lengths do not include side-view mirrors and rear ladders.

**COCKPIT**

- Standard on All Models:**
- Tilt Steering Wheel
  - Manual Solar & Privacy Shades on Side Windows
  - USB Dash Receptacle
  - Dual Dash Fans
  - Power Halo Leatherette Driver & Passenger Seats
  - Fire Extinguisher
  - Wood Drawers in Dash
  - Power Solar & Privacy Windshield Shades
  - Adjustable Seatbelt Brackets
  - Lighted Instrument Panel
  - Satellite-Ready Radio (Subscription Required)
  - Power Passenger Seat Footrest
  - CD Player & AM/FM Stereo
  - 12 V Dash Receptacle
  - 12 V Disconnect Switch
  - Overhead TV

Available Options:	33 AA	37 PA	38 QBA	38 QRA
In-Dash Navigation System	O	O	O	O

## GENERAL EXTERIOR

### Standard on All Models:

- Fiberglass Front & Rear Caps
- Tinted One-piece Windshield
- 8.0 kw Onan® Generator
- Horizontal Mounted Wipers
- Heated Power Mirrors
- Exterior Patio Light
- Power Patio Awning
- Automatic Entry Door Awning
- Awning(s) over Slide-outs
- Chrome Wheel Liners
- Quiet AC Roof-ducted System
- Two Low Profile Roof ACs (13,500 BTUs)
- Double Electric Step
- 1/4" Thick Single Pane Windows
- Convenient Access Doors with Gas Shocks
- Single Handle Lockable Storage Door Latches
- Heated Holding Tank Compartment
- Four 6 V Auxiliary Batteries
- Park Telephone Ready
- Digital TV Antenna
- Cable TV Ready
- 50 Amp Service
- Black Holding Tank Flush System
- Exterior Rinse Hose/Shower
- Gravity Water Fill
- Color Back-up Monitor
- 110 V Exterior Receptacle
- Undercoating
- Roof Ladder
- External Tripod Satellite Hook-up
- Exterior Storage Compartment Lights
- Chrome Mirror Heads with Integrated Turn Signal Cameras
- Full-body Paint
- Hydraulic Automatic Leveling Jacks
- Front Cap Protective Film

### Available Options:

	33 AA	37 PA	38 QBA	38 QRA
In-Motion Satellite Dish	○	○	○	○
Air Horns	○	○	○	○
Two Low Profile Roof ACs with Heat Pumps (15,000 BTUs)	○	○	○	○
Exterior TV	○	○	○	○
Mud Flap with Diffuser	○	○	○	○
Exterior Slide-out Tray***	○	○	○	○

\*\*\*Exterior Slide-out Tray & Central Vacuum Cleaner cannot be optioned together.

## GENERAL INTERIOR

### Standard on All Models:

- High Gloss Raised Panel Hardwood Cabinet Doors
- Solid Wood Cabinet Fascias
- Soft Touch Vinyl Ceiling
- TV in Entertainment Center
- Ceramic Tile Flooring in Living Room & Bath Area
- Treated Carpet & Fabrics
- Ball Bearing Drawer Slides
- Chainless Solar & Privacy Shades
- Power Roof Vents
- Tank Level Monitor System
- Smoke Detector
- 10-gallon DSI Gas/Electric Water Heater
- Power Step Well Cover
- 2000 Watt Sine Wave Inverter
- Carbon Monoxide Detector
- LED Lighting
- Extraordinaire™ AC System
- LPG Leak Detector
- Home Theater Surround Sound System (Includes DVD Player)

### Available Options:

	33 AA	37 PA	38 QBA	38 QRA
Cordovan Solid Cabinet Doors & Drawer Fronts	○	○	○	○
English Chestnut Solid Cabinet Doors & Drawer Fronts	○	○	○	○
Mocha Solid Cabinet Doors & Drawer Fronts	○	○	○	○
Stacked Washer/Dryer	○	○	○	○
Central Vacuum Cleaner****	○	○	○	○

\*\*\*\*Exterior Slide-out Tray & Central Vacuum Cleaner cannot be optioned together.

## LIVING AREA/DINETTE

### Available Options:

	33 AA	37 PA	38 QBA	38 QRA
Leatherette Booth Dinette on Passenger Side	S	S	NA	NA
Leatherette Booth Dinette on Driver Side	NA	NA	S	NA
Leatherette DE Sofa/Sleeper on Driver Side	NA	NA	S	NA
Leatherette Hide-A-Bed Sofa/Sleeper & One Recliner on Driver Side	S	S	○	NA
Leatherette L-Shaped Sofa and Recliner on Driver Side	○	○	NA	NA
Leatherette Hide-A-Bed Sofa/Sleeper on Passenger Side	NA	NA	NA	S
Leatherette U-Shaped Dinette on Driver Side	NA	NA	NA	S
Leatherette U-Shaped Dinette on Passenger Side	NA	○	NA	NA
Leatherette DE Sofa/Sleeper on Passenger Side	NA	NA	S	NA
Dinette with Computer Workstation	○	○	○	NA
Dinette with Computer Workstation & One Recliner	NA	NA	NA	○
Fireplace Below TV in Entertainment Center	○	○	NA	○

All options may not be available in every model. Because of progressive improvements, specifications, standard & optional equipment are subject to change without notice or obligation. For a complete & up-to-date list of available options & specifications, as well as information on Tiffin's full line of motorhomes, visit [tiffinmotorhomes.com](http://tiffinmotorhomes.com).



**KITCHEN**

- Standard on All Models:**
- Double Bowl Kitchen Sink with Single Lever Satin Nickel Faucet
  - Solid Surface Backsplashes
  - Microwave with Exterior Venting
  - Solid Surface Galley Countertop
  - 3-burner Recessed Cooktop with Gas Oven
  - Large 2-door Refrigerator with Pantry
  - Solid Surface Cooktop Cover

Available Options:	33 AA	37 PA	38 QBA	38 QRA
Convection Microwave	○	○	○	○
3-burner Cooktop with Convection Microwave	○	○	○	○
2-door Gas/Electric Refrigerator with Icemaker	○	NA	○	○
4-door Gas/Electric Refrigerator with Icemaker	○	NA	○	○
Solid Wood Refrigerator Panels (2-door Refrigerator)	○	NA	○	○
Residential Refrigerator	○	S	NA	○
Full Tile Backsplash	○	○	○	○

**BEDROOM**

- Standard on All Models:**
- Wardrobe with Automatic Light
  - TV
  - Inner Spring Queen Mattress (60" x 80")
  - Bed Comforter with Throw Pillows
  - Carpeted Flooring
  - Solar/Privacy Shades

Available Options:	33 AA	37 PA	38 QBA	38 QRA
King Bed Mattress (72" x 80")	○	○	NA	○
Bunk Beds (30" x 72") with Bunk Ladder/Convertible Wardrobe	NA	NA	S	NA
DVD Monitors in Bunk Beds	NA	NA	○	NA
Bedroom Ceiling Fan	○	○	○	○

**BATH**

- Standard on All Models:**
- Medicine Cabinet
  - Molded Fiberglass One-piece Shower
  - Roof Vent Fan
  - Skylight in Shower with Sliding Cover
  - Solid Surface Vanity Top

Available Options:	33 AA	37 PA	38 QBA	38 QRA
Tub (in Place of Shower)	NA	NA	○	○

**WARRANTY**

The Tiffin Five-Star Warranty.  
The best in the business, bar none.



At Tiffin Motorhomes, we build for quality first and foremost, limiting our production to just 12 coaches a day to ensure meticulous craftsmanship. It may not be the most business-savvy way to run a company but it is the best way. By investing the time and effort to do things right, we want you, as a Tiffin owner, to have the utmost confidence in your coach, as well as a peace of mind you won't find with other manufacturers. You see, not only do we stand proudly behind our product, we stand behind you as well.

★ **10**

**YEAR**  
CONSTRUCTION  
WARRANTY

The structural integrity of the welded frame of entire coach is warranted for 10 years.

★ **5**

**YEAR**  
DELAMINATION  
WARRANTY

We guarantee against all exterior fiberglass delamination or wall separation for 5 years.

★ **1**

**YEAR**  
COMPREHENSIVE  
WARRANTY

Your coach is warranted against defects in materials and workmanship for 12 months, or 12,000 miles of use.

★ **1**

**YEAR**  
COACH ROADSIDE  
SERVICES

Available through Coach-Net, the country's largest RV emergency road service, this program provides 24/7 access to responsive roadside and technical assistance.

★ **Ongoing  
Owner  
Support**

No other motorhome company can compare with Tiffin's exceptional customer service. Email us at [service@tiffinmotorhomes.com](mailto:service@tiffinmotorhomes.com) or call: **256/356.8661**.



## A family business built around yours.

Tiffin Motorhomes is proud to be one of the few family-owned manufacturers in the industry, and it makes a significant difference in how our company operates versus our competitors. With the Tiffin name on every coach, building a superior motorhome isn't just our occupation. It's a matter of personal pride, a pursuit we have committed our lives to perfecting.

**LEFT TO RIGHT: TIM TIFFIN, VAN TIFFIN,  
BOB TIFFIN, AND LEX TIFFIN**

**GO TO [TIFFINMOTORHOMES.COM](http://TIFFINMOTORHOMES.COM)**

Visit us on the web for more information on the 2016 Allegro RED and all 2016 Tiffin Motorhomes, along with the latest product and specification updates. Plus, watch videos and see other exclusive web content. You can also follow us on Facebook and Twitter.

FOR PARTS & SERVICE CALL [256/356.8661](tel:2563568661)



[FACEBOOK.COM/TIFFINMOTORHOMES](https://www.facebook.com/tiffinmotorhomes)



[TWITTER.COM/TIFFINMOTORHOME](https://www.twitter.com/tiffinmotorhome)

Colton RV  
North Tonawanda, NY 14120  
(716) 694-0188  
(800) 628-4889  
[www.ColtonRV.com](http://www.ColtonRV.com)

Colton RV  
Orchard Park, NY 14127  
(716) 957-3250  
(800) 628-4889  
[www.ColtonRV.com](http://www.ColtonRV.com)