

TIFFIN

CLASS-A

BYWAY

2024



Premium Paint System



Our eight-step, full-body paint system features premium grade paints sealed with three layers of clear coat with ultraviolet protection. An additional layer of high-performance film protects the front of the coach and select areas.



G1 EURO BLUE



G1 NASA



G1 SCARLET THUNDER

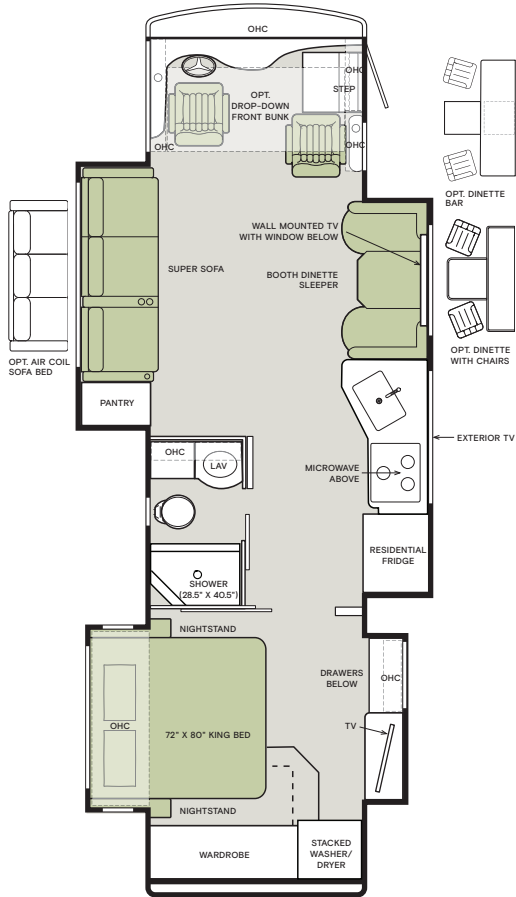


G1 FROSTED GRANITE

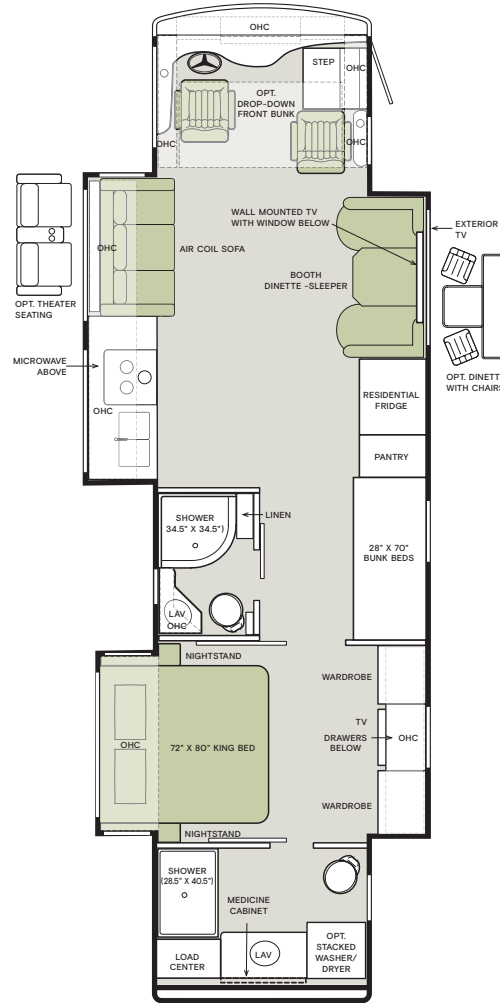
Images shown are representations of paint layouts only and do not reflect all exterior features or options. Colors shown may slightly differ from colors on actual product. Initial MY2024 Model Change Plans, Subject to Change in Full Production

Floor Plans

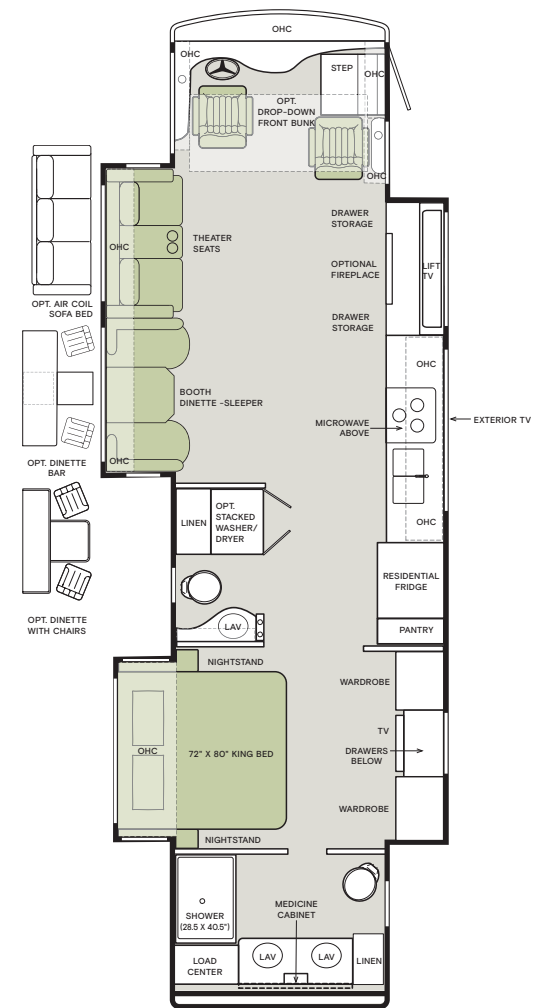
33 FL



38 BL



38 CL



The design of every Byway floor plan must meet four essential criteria: Maximum space, Optimal organization, Relaxation plus, and Elegant atmosphere. Tiffin's MORE Plans offer your family the most comfortable layout for life on the road.

If optional furniture combinations are selected, window locations may vary from diagram shown.

All options may not be available in every model. Because of progressive improvements and specifications, standard and optional equipment are subject to change without notice or obligation.

For a complete and up-to-date list of available options and specifications, visit tiffinmotorhomes.com.

Interior Décor

Make your experience on the road all your own. Express yourself by choosing from interior selections such as cabinet finishes and décor options for every part of your motorhome. In the 2024 Byway, you'll be able to travel in style no matter where your adventure takes you.

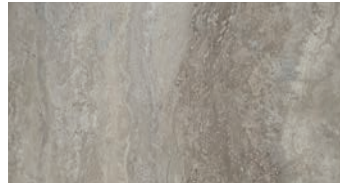


**MR. BOB TIFFIN
RECOMMENDS
MOONDANCE
DÉCOR PACKAGE
WITH SANDSTONE
CABINETS.**

FLOORING



SEAGRASS Luxury Vinyl Tile



MONTEANO Luxury Vinyl Tile

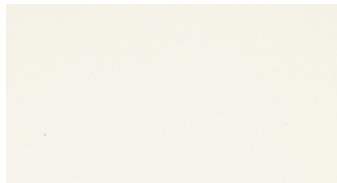
CABINETS



SANDSTONE



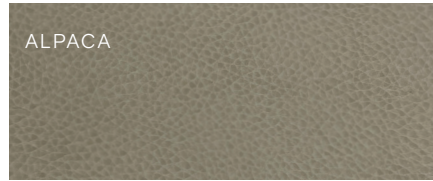
SHADOW



WHITE LINEN

Images shown are representations of paint layouts only and do not reflect all exterior features or options. Colors shown may slightly differ from colors on actual product. Colors of interior decor options shown may vary from colors on actual product.

MOONDANCE



ALPACA

FURNITURE



WINDOW TREATMENT



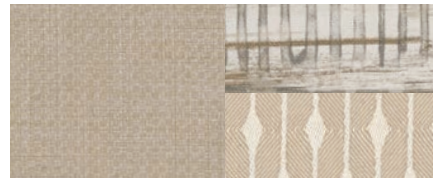
BACKSPLASH



COUNTERTOP

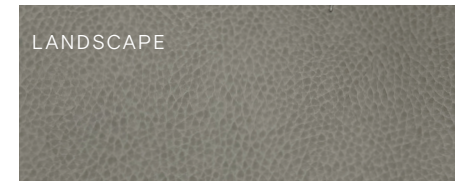


LIVING ROOM



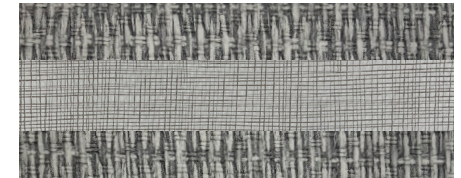
MASTER SUITE

IRON MOUNTAIN



LANDSCAPE

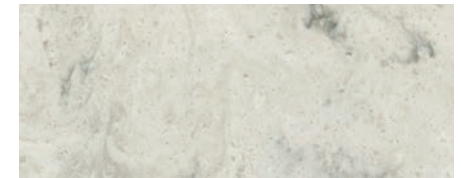
FURNITURE



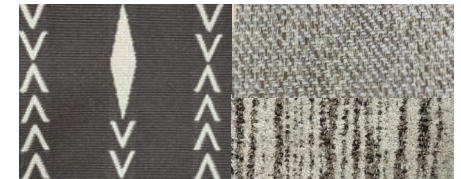
WINDOW TREATMENT



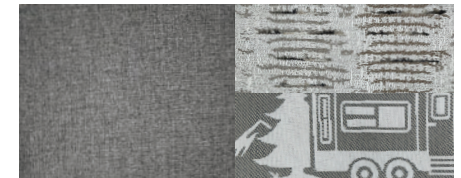
BACKSPLASH



COUNTERTOP



LIVING ROOM



MASTER SUITE

Specifications, Features, and Options

KEY : S : Standard Feature | O : Optional Feature; Additional costs may apply | D : Dependent; Availability is dependent on selection of another option | - : Not Available

WEIGHTS AND MEASURES	33 FL	38 BL	38 CL
DIMENSIONS			
Overall Length (approx.) ¹	35'2"	39'6"	39'6"
Wheel Base	198"	252"	252"
Overall Width ¹	101"	101"	101"
Overall Height	12'10"	12'10"	12'10"
Minimum Garage Height	14'	14'	14'
Interior Height	84"	84"	84"
Interior Width	96"	96"	96"
Square Footage (approx.) ²	330	350	350
Basement Storage (cubic feet, approx.)	71	118	118
WEIGHT LIMITS			
GAWR-Front (pounds)	10,000	10,410	10,410
GAWR-Rear (pounds)	18,000	17,590	19,000
GVWR (pounds)	28,000	28,000	29,410
Maximum Trailer Weight (pounds) ³	5,000	5,000	5,000
Hitch Rating (pounds)	5,000	5,000	3,590
GCWR (pounds)	33,000	33,000	33,000
CAPACITIES			
Fuel Tank (gallons)	90	90	90
DEF Tank (gallons) ⁴	13	13	13
Fresh Water (gallons)	70	70	70
Grey Water (gallons)	50	65	65
Black Water (gallons)	50	65	65
LPG Tank (gallons) ⁵	24	24	24
QUANTITIES			
Number of Slideouts	4	3	3
Sleeping Capacity ⁶	3 to 5	4 to 7	2 to 5
Sleeping Areas ⁶	2 to 4	3 to 6	1 to 4
Seat Belts ⁶	5 to 7	4 to 7	4 to 6
Seating Capacity ⁶	7 to 9	6 to 9	6 to 8

¹ The approximated coach width and length does not include side-view mirrors and rear ladders.

² Square footage was calculated with the slide-outs fully extended.

³ Maximum Trailer Weight is dependent on the loading and towing variables which include the GVWR, GAWR, and GCWR, as well as adequate trailer brakes.

⁴ Diesel Exhaust Fluid (DEF) is the active component used in Selective Catalytic Reduction (SCR) engines to reduce nitrogen oxide emissions by 90% to meet EPA standards.

⁵ LPG tank can only be filled to 80% capacity.

⁶ Dependent on furniture and dinette options.

CHASSIS AND DRIVETRAIN

- Freightliner® XCS Straight Rail Rear Engine Diesel Chassis
- Cummins® B6.7 340 HP Diesel Engine with 700 lb-ft Torque
- 160-Amp Alternator
- Allison® 2500 MH 6-speed Automatic Transmission with Lock-up Torque Converter
- Aluminum Wheels
- Front and Rear 255/80R 22.5 Tires
- (2) 12-Volt Flooded Lead-Acid Chassis Batteries
- Hydraulic Leveling Jacks with control panel²
- Neway® Air Ride Front Suspension
- Freightliner® V-Series V-Ride Rear Suspension
- Custom Tuned Sachs® Shock Absorbers
- Rear Radiator
- Front Disc Brakes and Rear Drum Brakes
- Full Air Brake System with Automatic Slack Adjusters
- Single Stage Variable Geometry Turbocharger (VGT) Engine Brake
- Manual Parking Brake
- Tire Pressure Monitoring
- Adaptive Cruise Control
- Automatic Traction Control
- Collision Mitigation with Forward Warning and Active Braking
- Electronic Stability Control

¹ Peak horsepower achieved at 2,600 RPM. Peak torque achieved at 1,600 RPM.

² Valid™ Air Leveling System is no longer available.

CONSTRUCTION

- Seamless One-piece Gel-coat Fiberglass Molded Roof Cap
- 5 1/4" Formed Roof Insulation
- Tubular Aluminum Roof Skeleton Frames
- Quiet Air Cooling System
- One-piece Molded Gel-coat Fiberglass Front and Rear Caps
- Steel Cockpit Overhead Support Frame
- Crane® Composites Noble® Select All-Composite Exterior Sidewalls
- Tubular Aluminum Wall Skeleton Frames
- High-performance Thermal Insulation in Sidewalls
- Steel Floor Skeleton
- Engineered Wood Sub-flooring
- 1 1/2" Thick Thermal Insulation in Floor
- Steel Basement Construction
- Rust Protective Undercoating
- Hydraulic Slide-out Mechanisms

ELECTRICAL

- Liquid Propane (LP) Coach¹
- Spyder Controls Multiplex System
- Firefly Integrations Mira Module²
- Centralized 5.5" Spyder System Main Monitor
- Interior Entryway Spyder Switch Panel
- Conveniently Located Spyder Switch Panels Throughout Coach
- 8.0-Kilowatt Onan® Quiet Diesel Generator
- Generator Slide Tray
- 2,000-Watt Pure Sine Wave Inverter Charger with Auto-Gen Start and Interior Remote Control³
- (4) 6-Volt, 230-Amp Hours Flooded Lead-Acid House Batteries
- Battery Slide-out Tray
- (2) 15,000-BTU Air Conditioners with Heat Pumps
- Wall-mounted Thermostat with Built-in Temperature Sensor
- (1) 35,000-BTU and (1) 30,000-BTU Ducted Furnaces
- 50-Amp Shore Power
- Prep for Solar Panels⁴
- Auxiliary Solar Port
- HD Over-the-air Antenna
- Park Cable and Ground Satellite Hook-up
- Prep for In-motion Satellite
- Blu-ray™ Player
- Satellite Receiver⁵
- Prep for Wi-Fi Booster
- 12-Volt Breaker Panel
- 12-Volt Disconnect Switch
- Rotary Disconnect Switches for House Batteries, Chassis Batteries, and Inverter
- Ground Fault Circuit Interrupter (GFCI) Outlets at Galley, Lavatories, and Sewer Bay
- 110-Volt Exterior Receptacle
- Surge Guard® Transfer Switch
- USB Receptacles Throughout Coach

ELECTRICAL OPTIONS

	33 FL	38 BL	38 CL
In-motion Satellite Dish ⁶	O	O	O
Wi-Fi Booster	O	O	O

¹ Propane is used to power the ducted furnaces, the water heater, and the liquid propane cooktop.

² Download the accompanying Vegatouch app to control your coach locally within Bluetooth range.

³ Automatic generator start capabilities controlled through Spyder Controls Multiplex System.

⁴ Includes docking ports for aftermarket solar panels.

⁵ Requires subscription.

⁶ High-definition programming is not available on a domed satellite antenna unless you subscribe to DISH Network®.

PLUMBING

- Truma AquaGo™ Comfort Instant Water Heater¹
- Water Heater Bypass System
- Aqua View Showermiser™
- Water Filter
- Water Pump Switch Access from Spyder System and Sewer Bay Board
- Low-point Water Drain Lines
- Black Holding Tank Flush System
- Gravity Water Fill
- Heated Fresh and Holding Tank Compartment via Heat Duct
- Tank Level Monitor System
- Centralized Exterior Sewer Bay with Gravity Black and Grey Evacuation Ports
- Exterior Rinse Hose with Shower Head
- Sewer Bay Hand Sanitizer and Paper Towel Holders

¹ Controllable through the Truma control panel and the Spyder System control panels.

EXTERIOR

- Full-body Paint with (3) Layers of Clear Coat
- Single-colored Slide-out Endwalls
- High Performance Protective Film on Front Cap and Select Areas
- (1) Girard® Side-mounted Powered Patio Awning with Integrated LED Lighting
- Girard® Slide-out Toppers
- Side-swinging Exterior Storage Doors with Gas Shocks
- Lockable Handles on Compartment Doors
- Motion-sensor Lights in Cargo Bay
- 120-Volt and 12-Volt Outlets Inside Cargo Bays
- Charcoal Carpet Cargo Walls
- Fiberglass Reinforced Plastic Basement Floor
- Framed, Single-Pane Windows
- Exterior Patio Light
- Daytime Running Lights
- Docking Lights
- Chrome Power Heated Side-View Mirrors with Integrated Cameras
- Exterior TV with Soundbar
- Fast Charge USB ports within Exterior TV Compartment
- Lightweight Entry Door with Integrated Screen
- Entry Door Grab Handle
- Deadbolt Front Entrance Lock
- Automatic Double Entry Step
- Mud Flaps

EXTERIOR OPTIONS

	33 FL	38 BL	38 CL
Lippert™ On-The-Go™ Ladder ¹	O	O	O

¹ All units will ship with a Lippert™ On-The-Go™ Prepped Receiver installed.

Specifications, Features, and Options (Cont'd)

INTERIOR					
<ul style="list-style-type: none"> Handcrafted Overhead Cabinetry Carpeted Step Well with Composite Steps Manual Step Well Cover Recessed Step Well Lighting Living Area TV ¹ Solid Surface Galley Countertop Treated Carpet in Slide-out Floors 	<ul style="list-style-type: none"> Handcrafted Slide-out Fascia Soft Touch Vinyl Ceiling Dimmable LED Lighting Prep for Washer and Dryer Carbon Monoxide Detector LPG Leak Detector Smoke Detector 	<ul style="list-style-type: none"> Fire Extinguisher Solar and Privacy Shades Soft-closing Drawers Powered Roof Vents Interior Grab Handle at Entry Door Egress Windows Throughout Coach 	33 FL	38 BL	
INTERIOR OPTIONS			33 FL	38 BL	38 CL
Treated Fabric Suites	Moondance		O	O	O
	Iron Mountain		O	O	O
Upholstery Fabrics	Ultrafabrics® Montage Alpaca ²		D	D	D
	Ultrafabrics® Montage Landscape ³		D	D	D
Cabinetry Stain	Shadow		O	O	O
	Sandstone		O	O	O
	White Linen		O	O	O
Floor Tiles ⁴	Sea Grass Luxury Vinyl Tile		O	O	O
	Monteano Luxury Vinyl Tile		O	O	O
Standalone Living Area Fireplace			-	-	O
Stacked Washer and Dryer			O	O	O
Central Vacuum Cleaner			O	O	O

¹ Moved to new location above dinette on 33 AL. Removes section of overhead cabinetry on 33 AL.

² Always paired with Moondance Fabric Suite.

³ Always paired with Iron Mountain Fabric Suite.

DRIVER'S COMPARTMENT

<ul style="list-style-type: none"> Ultrafabrics® Montage Power Driver and Passenger Seats Dual Driver And Passenger Seat Armrests Swivel Bases for Driver and Passenger Seats Adjustable Seatbelt Brackets Passenger Seat Footrest Tilt and Telescoping Steering Wheel with Integrated Controls Adjustable Accelerator and Brake Pedals Ergonomic Dash with Graphite Accents Mounted Dash Fans Cupholders on Driver and Passenger Side Digital Dash Cluster (1) Center Storage Drawer 	<ul style="list-style-type: none"> Generator Start & Stop Rocker Switch USB Dash Receptacles 12-Volt Dash Receptacle Backlit Dash Rocker Switches Passenger Console Controls for Map Light, Fan, and Step Well Light Driver and Passenger Map Lights One-piece Panoramic Windshield Single-motor Intermittent Windshield Wipers Automatic LED Headlights Side-view Cameras ¹ Color Back-up Camera 7" High Definition LED Multichannel Monitor for Side-view and Back-up Cameras 	<ul style="list-style-type: none"> Stereo with AM & FM Radio, CD Player, and Satellite Radio ² Ceiling Mounted Speakers In-dash Navigation System Overhead Cabinetry with Wooden Panel Doors Auxiliary Start Switch Concealed Air Horn Manual Opening Driver Side Window Solid, Non-opening Passenger Side Window Powered Solar and Privacy Windshield Shade Manual Solar and Privacy Shades on Side Windows
---	--	---

DRIVER'S COMPARTMENT OPTIONS	33 FL	38 BL	38 CL
Front Overhead Drop-Down Bunk ³	O	O	O

¹ Subscription required for satellite radio.

² Integrated within side-view mirrors and activated by turn signals.

³ Mattress measures 72" x 30". Decreases overhead storage capacity. Maximum weight limit of drop-down bunk is 250 pounds. Now includes telescoping ladder.

DINETTE AND LIVING AREA		SLEEPS	SEATS	SEATBELTS	33 FL	38 BL	38 CL
Driver Side Dinette	72" Booth Dinette-Sleeper ¹	1	4	2	S	S	S
	72" Dinette with Chairs ²	-	2	-	O	O	O
	72" Dinette Bar ³	-	2	-	O	O	O
Driver Side Furniture	95" Super Sofa ⁴	1	3	3	S	-	-
	68" Theater Seating	-	2	2	-	-	S
	68" Air Coil Sofa Bed ⁵	2	2	2	-	-	O
Passenger Side Furniture	74" Theater Seating	-	2	2	-	S	-
	74" Air Coil Sofa Bed ⁵	2	2	2	-	O	-
Passenger Side Bunk Beds (28" x 70")		2	-	-	-	S	-

¹ Booth Dinette-Sleeper converts to 69" x 45" sleeping area.

² Formerly known as "Dinette Computer Workstation". The printer bump-out was removed for more leg room. The keyboard and printer trays have been converted to a drawer and a fixed shelf to maximize storage. Includes (2) freestanding accent chairs and (2) wooden folding chairs.

³ Includes (2) freestanding accent chairs and (2) wooden folding chairs.

⁴ Consists of a flip and fold sofa bed, a 27" single theater seat, and a center console. Flip and fold sofa bed converts to 70" X 51" sleeping area.

⁵ Mattress measures 72" x 52" and requires external pump.

KITCHEN

<ul style="list-style-type: none"> 15-Cubic Foot Stainless Steel Residential Refrigerator with Bottom Freezer ¹ 1.7-Cubic Foot Smart Convection Microwave with Air Fry 	<ul style="list-style-type: none"> Large Kitchen Sink with Single Level Faucet and Pull-down Sprayer Panoramic Galley Window 	<ul style="list-style-type: none"> LED Countertop Lighting Full Tile Backsplash Solid Surface Galley Countertop, Sink, and Cooktop Cover
---	--	---

KITCHEN OPTIONS		33 FL	38 BL	38 CL
Cooking Appliances	Three-Burner Liquid Propane Cooktop	S	S	S
	Oven Range with Liquid Propane Cooktop	O	O	O

¹ Refrigerator volume is approximated.

BEDROOM

<ul style="list-style-type: none"> Memory Foam King Mattress (72" x 80") Under Bed Storage Bedside Windows Overhead Cabinets with Headboard 	<ul style="list-style-type: none"> Bed Comforter with Throw Pillows Handcrafted Privacy Door LED Reading Lights Nightstand with Hardwood Finished Top 	<ul style="list-style-type: none"> Mounted Bedroom TV Centralized Entertainment Center ¹ Wardrobe with Drawers Underneath
---	---	---

¹ Houses Blu-ray™ player, satellite receiver, and cable TV hook-up.

BATHROOM

<ul style="list-style-type: none"> (1) Porcelain Master Bathroom Sink Solid Surface Lavatory Top Handheld Shower Head with Slide Bar 	<ul style="list-style-type: none"> Shower Skylight Towel and Toilet Paper Holders Mirrored Medicine Cabinet 	<ul style="list-style-type: none"> Roof Vent Fan Base Cabinet
---	--	---

BATHROOM OPTIONS		33 FL	38 BL	38 CL
Number of Bathrooms	(1) Bathroom	S	-	-
	(1) Bathroom and (1) Half-bath ¹	-	S	S
Shower	One-Piece Molded Fiberglass Shower (28.5" x 40.5")	S	-	S
	(2) One-Piece Molded Fiberglass Showers (28.5" x 40.5" & 34.5" x 34.5")	-	S	-
Toilet	(1) Gravity Flush Toilet	S	-	-
	(1) Gravity Flush Toilet and (1) Macerator Toilet	-	S	S

¹ All half-baths contain a toilet and a solid surface countertop with a single porcelain sink.

1

YEAR OR 12,000 MILES
LIMITED WARRANTY

5

YEARS OR 50,000 MILES
DELAMINATION
LIMITED WARRANTY

10

YEARS OR 50,000 MILES
CONSTRUCTION
LIMITED WARRANTY

1

YEAR COACH
ROADSIDE SERVICE



ONGOING
CUSTOMER SUPPORT

FOR SALES CALL 256-356-8661 AND PARTS & SERVICE CALL 256-356-0261 OR VISIT TIFFINMOTORHOMES.COM

105 2ND ST NW RED BAY, AL 35582  

Colton RV & Marine
3122 Niagara Falls Blvd
North Tonawanda, NY 14120
(716) 694-0188
www.ColtonRV.com

Colton RV & Marine
3443 Southwestern Blvd.
Orchard Park, NY 14127
(716) 957-3250
www.Coltonrv.com



TIFFIN

MOTORHOMES

All trademarks and logos are owned or used under license by Tiffin Motor Homes, Inc. and include, but are not limited to: TIFFIN®, MANY ADVENTURES, ONE DREAM™, ALLEGRO®, ALLEGRO BREEZE®, ALLEGRO RED®, PHAETON®, ALLEGRO BUS®, ZEPHYR®, WAYFARER®, ROUGHING IT SMOOTHLY®, OPEN ROAD®, POWERGLIDE®, CAHABA®, BYWAY™, CONVOY™, BRONZE™, and associated logos and emblems. Unauthorized use of any trademark of Tiffin Motor Homes, Inc. is strictly prohibited.
© Copyright 2023 Tiffin Motor Homes, Inc.

For all information concerning the limited warranty provided by Tiffin, please refer to the full written limited warranty set forth on the Tiffin website or held by our authorized dealerships.
Please note, some interior furnishings not included. Revised 12/13/23