

TIFFIN

2025

CLASS-A

# OPEN ROAD ALLEGRO



## What's New Summary - Open Road Allegro

### WHAT'S NEW

---

- Optional Theater Seating on all Floor Plans (Except 36 LA)
  - Sandstone Cabinets
  - Dish Receiver Box Removed when Satellite is Not Installed
  - “Built by Tiffin Motorhomes in Red Bay, AL” Sticker Added
  - Exterior Ladder Standard
  - New Generation 11 Paint Scheme
  - Starlink® Prep at Sewer Board (Optional)
- No Longer Available**
- Shadow Cabinets
  - Generation 9 Paint Scheme
  - Sunlit Sand Exterior Color

## Premium Paint System

The eight-step, full-body paint system features premium grade paints sealed with three layers of clear coat with ultraviolet protection. An additional layer of high-performance film protects the front of the coach and select areas.

## Generation 10 Paint Schemes



G10 BARCELONA



G10 NASA



G10 WHITE MAHOGANY



G10 FROSTED GRANITE

## Generation 11 Paint Schemes

NEW



G11 BARCELONA



G11 NASA



G11 WHITE MAHOGANY



G11 FROSTED GRANITE

Images shown are representations of paint layouts only and do not reflect all exterior features or options. Colors shown may slightly differ from colors on actual product.

## Floor Plans and Specifications

FLOOR PLAN	Overall Length (approx.) <sup>1</sup>	Wheel Base	Overall Width <sup>1</sup>	Overall Height	Garage Height	Interior Height	Interior Width	Square Footage (approx.) <sup>2</sup>	Basement Storage (cubic feet, approx.)	GAWR-Front (pounds)	GAWR-Rear (pounds)	GVWR (pounds)	Maximum Trailer Weight (pounds) <sup>3</sup>	Hitch Rating (pounds)	GCWR (pounds)
32 FA	34' 3"	228"	101"	12' 10"	14'	84"	96"	315	140	9,000	15,500	24,000	5,000	5,000	30,000
32 SA	34' 3"	228"	101"	12' 10"	14'	84"	96"	300	140	9,000	15,500	24,000	5,000	5,000	30,000
34 PA	36' 1"	252"	101"	12' 10"	14'	84"	96"	355	203	9,000	15,500	26,000	4,000	5,000	30,000
36 LA	37' 6"	252"	101"	12' 10"	14'	84"	96"	330	203	9,000	15,500	26,000	5,000	5,000	30,000
36 UA	38'	252"	101"	12' 10"	14'	84"	96"	355	203	9,000	15,500	26,000	4,000	5,000	30,000

<sup>1</sup> The approximated coach width and length does not include side-view mirrors and rear ladders.

<sup>2</sup> Square footage was calculated with the slide-outs fully extended.

<sup>3</sup> Maximum trailer weight is dependent on the loading and towing variables which include the GVWR, GAWR, and GCWR, as well as adequate trailer brakes.

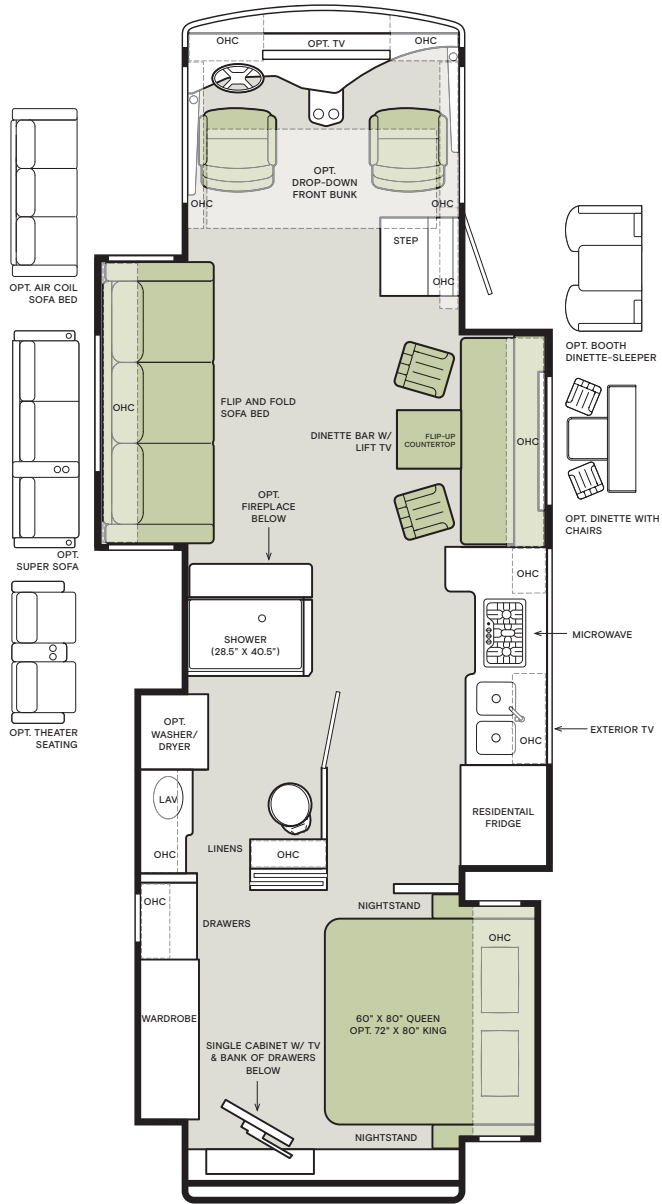


The design of every Open Road floor plan must meet four essential criteria: Maximum space, Optimal organization, Relaxation plus, and Elegant atmosphere. Tiffin's MORE Plans offer your family the most comfortable layout for life on the road.

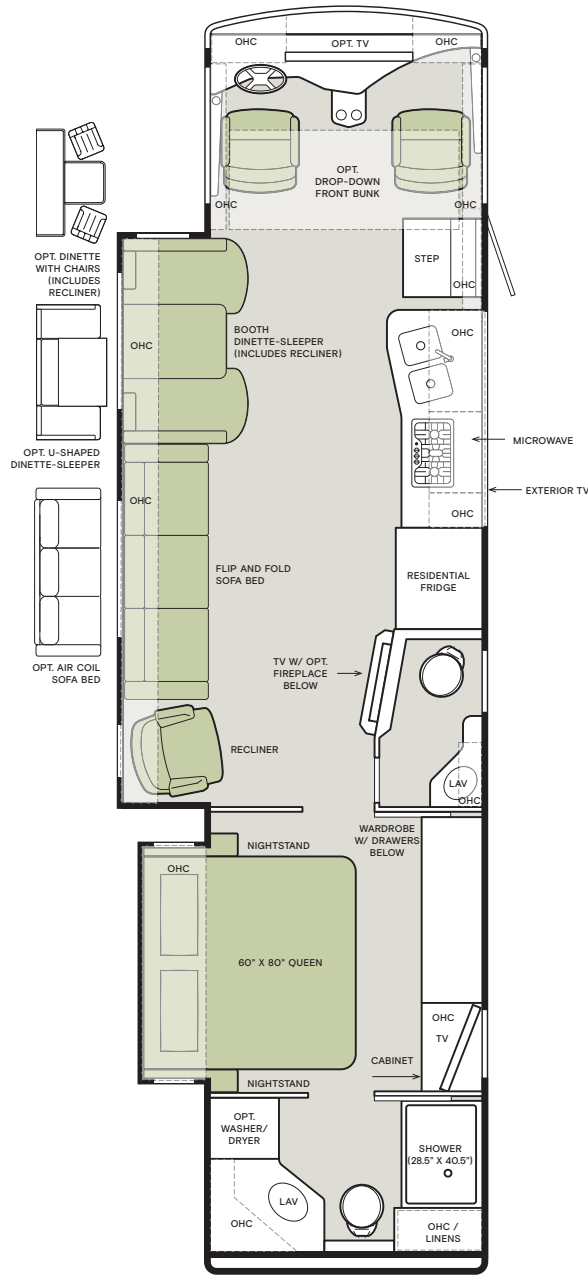


If optional furniture combinations are selected, window locations may vary from diagram shown. All options may not be available in every model. Because of progressive improvements and specifications, standard and optional equipment are subject to change without notice or obligation. For a complete and up-to-date list of available options and specifications, visit [tiffinmotorhomes.com](http://tiffinmotorhomes.com).

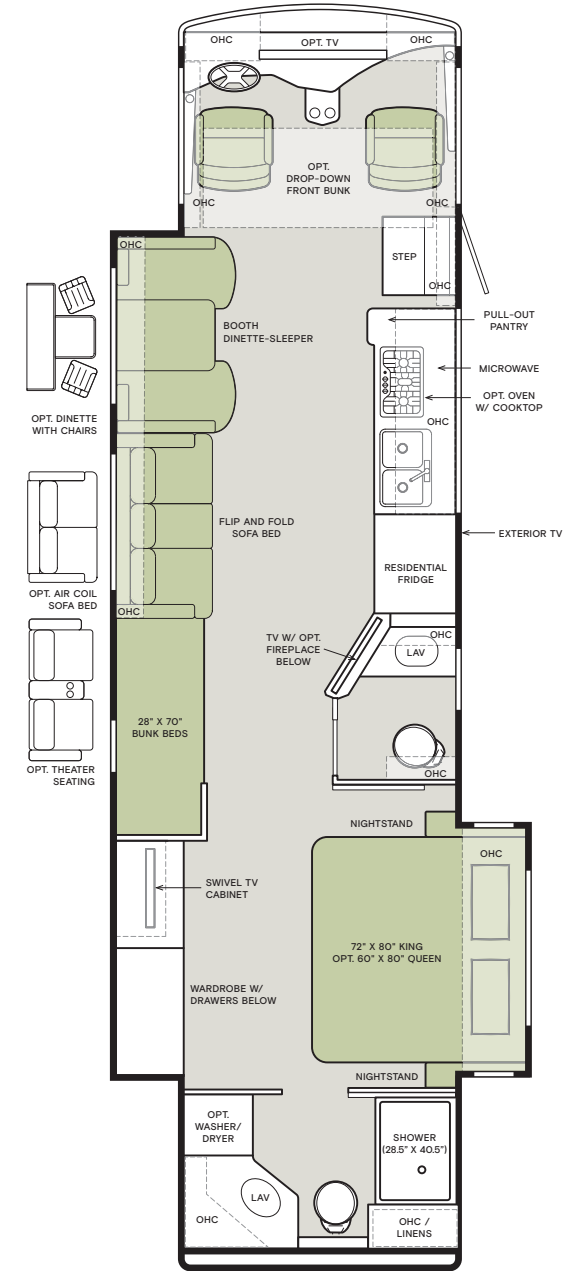
34 PA



36 LA



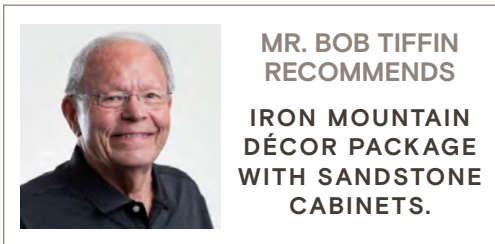
36 UA



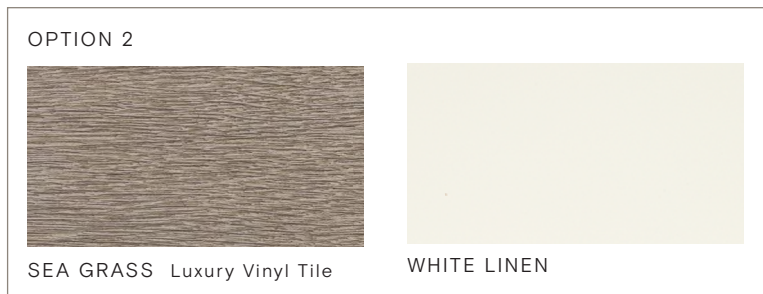
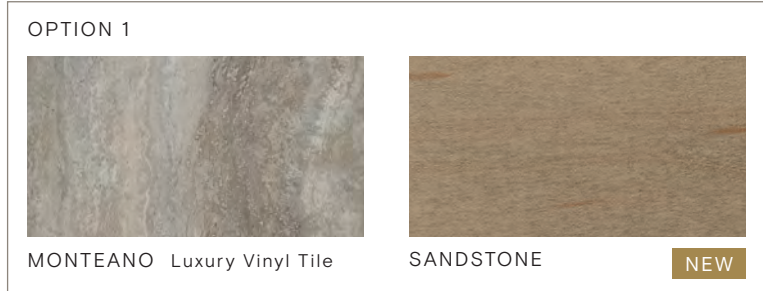
If optional furniture combinations are selected, window locations may vary from diagram shown. All options may not be available in every model. Because of progressive improvements and specifications, standard and optional equipment are subject to change without notice or obligation. For a complete and up-to-date list of available options and specifications, visit [tiffinmotorhomes.com](http://tiffinmotorhomes.com).

## Interior Décor

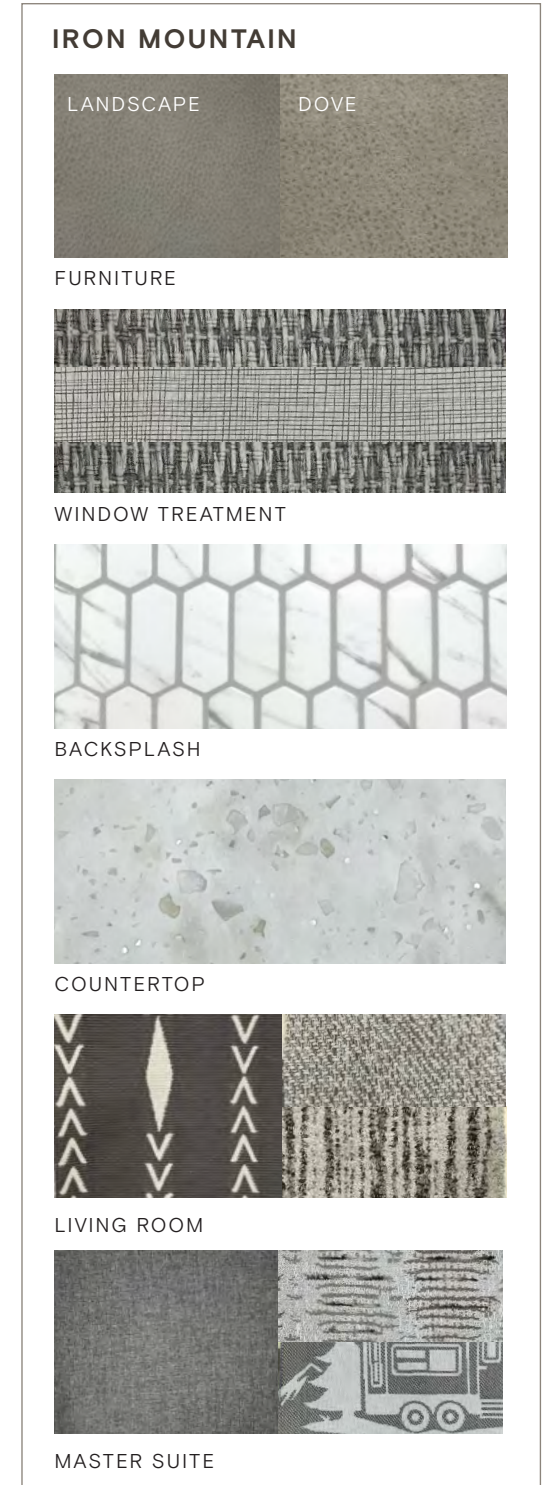
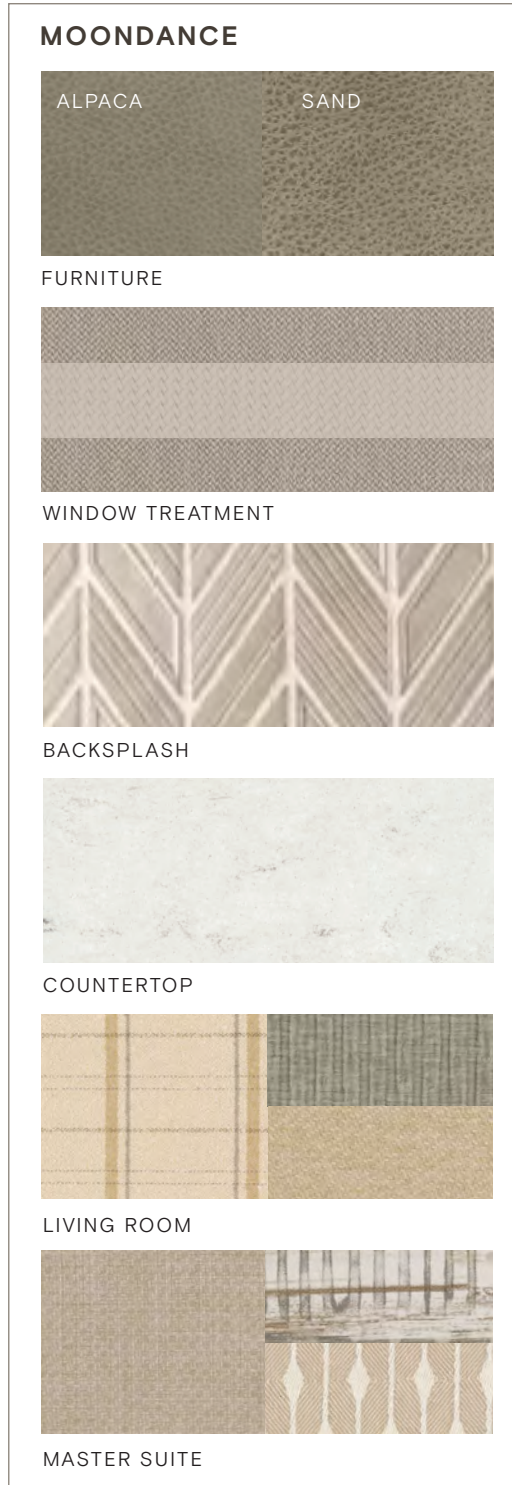
Make your experience on the road all your own. Express yourself by choosing from interior selections such as cabinet finishes and décor options for every part of your motorhome. In the 2024 Open Road, you'll be able to travel in style no matter where your adventure takes you.



## FLOORING AND CABINET OPTIONS



Images shown are representations of paint layouts only and do not reflect all exterior features or options. Colors shown may slightly differ from colors on actual product. Colors of interior decor options shown may vary from colors on actual product.



Colton RV & Marine  
3122 Niagara Falls Blvd.  
North Tonawanda, NY 14120  
(716) 694-0188  
www.ColtonRV.com

Colton RV  
3443 Southwestern Blvd.  
Orchard Park, NY 14127  
(716) 957-3250  
www.ColtonRV.com

Colton RV  
489 Bushkill Plaza LN #9665  
Wind Gap, PA 18091  
(610) 863-5239  
www.ColtonRV.com

1

YEAR OR 12,000 MILES  
LIMITED WARRANTY

3

YEAR DELAMINATION  
LIMITED WARRANTY WITH  
NO MILEAGE LIMITATION

5

YEAR CONSTRUCTION  
LIMITED WARRANTY WITH  
NO MILEAGE LIMITATION

1

YEAR COACH  
ROADSIDE SERVICE

∞

ONGOING  
CUSTOMER SUPPORT

FOR SALES CALL 256-356-8661 AND PARTS & SERVICE CALL 256-356-0261 OR VISIT [TIFFINMOTORHOMES.COM](http://TIFFINMOTORHOMES.COM)

105 2ND ST NW RED BAY, AL 35582 [f](#) [i](#)



**TIFFIN**

MOTORHOMES

All trademarks and logos are owned or used under license by Tiffin Motor Homes, Inc. and include, but are not limited to: TIFFIN®, MANY ADVENTURES, ONE DREAM™, ALLEGRO®, ALLEGRO BREEZE®, ALLEGRO RED®, PHAETON®, ALLEGRO BUS®, ZEPHYR®, WAYFARER®, ROUGHING IT SMOOTHLY®, OPEN ROAD®, BYWAY™, and associated logos and emblems. Unauthorized use of any trademark of Tiffin Motor Homes, Inc. is strictly prohibited.

© Copyright 2024 Tiffin Motor Homes, Inc.

For all information concerning the limited warranty provided by Tiffin, please refer to the full written limited warranty set forth on the Tiffin website or held by our authorized dealerships.

Please note, some interior furnishings not included. Revised: 6/11/2024