

# VILANO

2018



**VANLEIGH RV**  
— BUILT AROUND YOU —





## VANLEIGH RV

We understand that you have many options to consider when purchasing a new RV, and we thank you for taking the time to consider ours. Our family has been in the RV manufacturing industry for over 40 years. The Vanleigh team gets to work well before dawn every morning with one goal in mind, to create the best built product in the marketplace. We believe in building a product that we would want to RV in, whether it's for a weekend getaway or a yearlong hiatus. That's why every Vanleigh RV is made knowing that our customer's journey is their home.

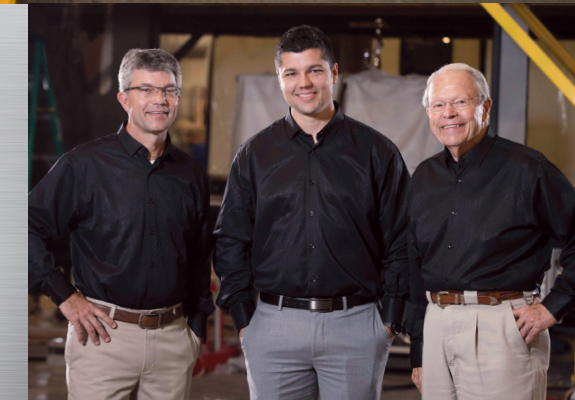


BUILT-IN ADVENTURE



365 DAYS

— *A Year* —



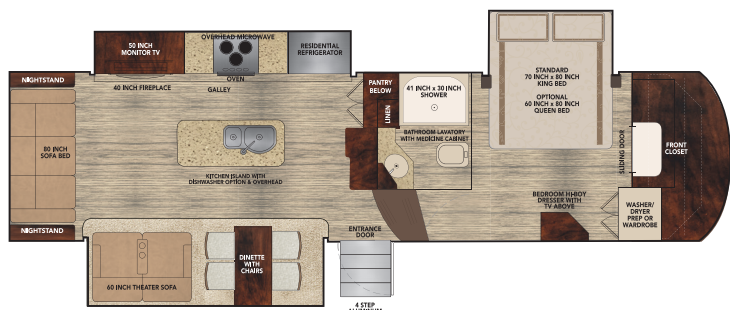


LIFE IS A  
  
**JOURNEY**  
 Start Here



## FLOOR PLANS

### 320GK VILANO REAR LIVING



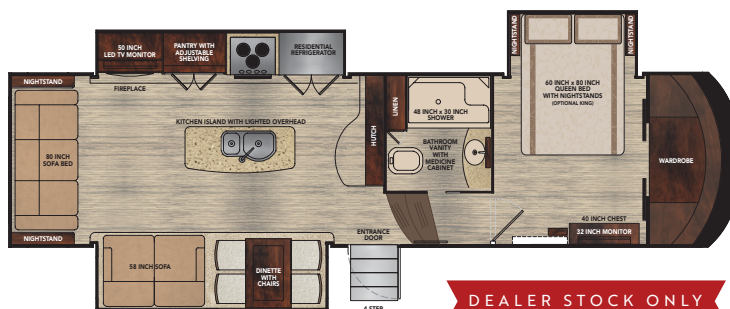
### 2018 SPECIFICATIONS

GVWR 16,000  
 Dry Weight 12,400\*  
 Cargo Carrying 3,600  
 Width 101"  
 Height 12' 11" \*\*  
 Length 34' 11" \*\*\*  
 Fresh Water Cap. 54 gal

Grey Water Cap. 90 gal  
 Black Water Cap. 45 gal  
 Water Heater 10 gal  
 Furnace 42K BTU  
 LP Cap. 60 lbs  
 Hitch Weight 2,600\*\*\*

- \* unloaded and based off of an average
- \*\* to top of A/Cs
- \*\*\* from pinbox to rear ladder based on standard build, no options
- \*\*\*\* unloaded and based off of an average

### 325RL VILANO REAR LIVING



### 2018 SPECIFICATIONS

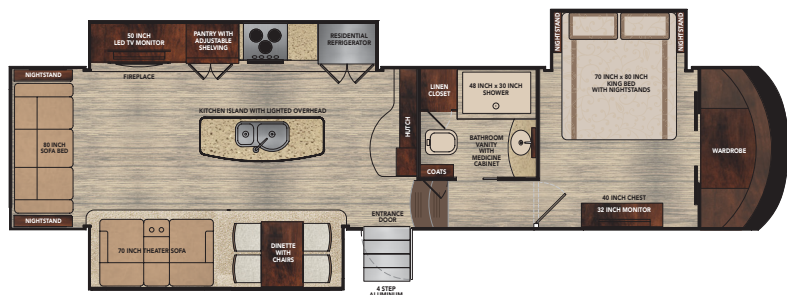
GVWR 16,000  
 Dry Weight 12,500\*  
 Cargo Carrying 3,500  
 Width 101"  
 Height 12' 11" \*\*  
 Length 34' 7" \*\*\*  
 Fresh Water Cap. 54 gal

Grey Water Cap. 48 gal  
 Black Water Cap. 45 gal  
 Water Heater 10 gal  
 Furnace 42K BTU  
 LP Cap. 60 lbs  
 Hitch Weight 2,600\*\*\*

- \* unloaded and based off of an average
- \*\* to top of A/Cs
- \*\*\* from pinbox to rear ladder based on standard build, no options
- \*\*\*\* unloaded and based off of an average

DEALER STOCK ONLY

### 365RL VILANO REAR LIVING



### 2018 SPECIFICATIONS

GVWR 16,000  
 Dry Weight 13,000\*  
 Cargo Carrying 2,900  
 Width 101"  
 Height 12' 11" \*\*  
 Length 38' 11" \*\*\*  
 Fresh Water Cap. 54 gal

Grey Water Cap. 90 gal  
 Black Water Cap. 45 gal  
 Water Heater 10 gal  
 Furnace 42K BTU  
 LP Cap. 60 lbs  
 Hitch Weight 2,800\*\*\*\*

- \* unloaded and based off of an average
- \*\* to top of A/Cs
- \*\*\* from pinbox to rear ladder based on standard build, no options
- \*\*\*\* unloaded and based off of an average

### 369FB VILANO FRONT BATH & HALF



### 2018 SPECIFICATIONS

GVWR 16,000  
 Dry Weight 14,100\*  
 Cargo Carrying 1,900  
 Width 101"  
 Height 12' 11" \*\*  
 Length 38' 11" \*\*\*  
 Fresh Water Cap. 54 gal

Grey Water Cap. 90 gal  
 Black Water Cap. 45 gal  
 Water Heater 10 gal  
 Furnace 42K BTU  
 LP Cap. 60 lbs  
 Hitch Weight 3,100\*\*\*\*

- \* unloaded and based off of an average
- \*\* to top of A/Cs
- \*\*\* from pinbox to rear ladder based on standard build, no options
- \*\*\*\* unloaded and based off of an average

### 370GB VILANO GRAND BAR



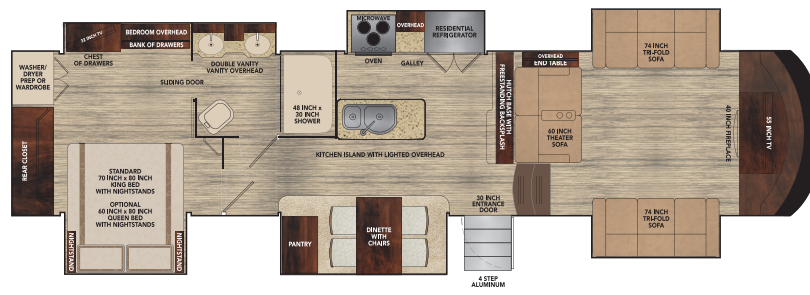
### 2018 SPECIFICATIONS

GVWR 16,000  
 Dry Weight 14,000\*  
 Cargo Carrying 1,900  
 Width 101"  
 Height 12' 11" \*\*  
 Length 38' 11" \*\*\*  
 Fresh Water Cap. 54 gal

Grey Water Cap. 90 gal  
 Black Water Cap. 45 gal  
 Water Heater 10 gal  
 Furnace 42K BTU  
 LP Cap. 60 lbs  
 Hitch Weight 3,100\*\*\*\*

- \* unloaded and based off of an average
- \*\* to top of A/Cs
- \*\*\* from pinbox to rear ladder based on standard build, no options
- \*\*\*\* unloaded and based off of an average

### 375FL VILANO FRONT LIVING



### 2018 SPECIFICATIONS

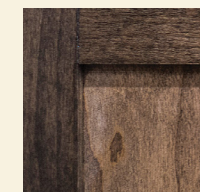
GVWR 16,000  
 Dry Weight 14,500\*  
 Cargo Carrying 1,500  
 Width 101"  
 Height 12' 11" \*\*  
 Length 40' 6" \*\*\*  
 Fresh Water Cap. 54 gal

Grey Water Cap. 90 gal  
 Black Water Cap. 45 gal  
 Water Heater 10 gal  
 Furnace 42K BTU  
 LP Cap. 60 lbs  
 Hitch Weight 3,300\*\*\*\*

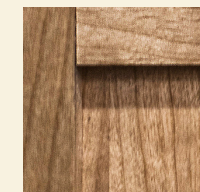
- \* unloaded and based off of an average
- \*\* to top of A/Cs
- \*\*\* from pinbox to rear ladder based on standard build, no options
- \*\*\*\* unloaded and based off of an average

## STANDARD SOLID WOOD Cabinetry

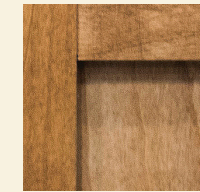
All of our wood cabinetry is made of solid wood and is manufactured on-site in the Vanleigh cabinet shop.



Mocha



Amber Glaze



English Chestnut

# THE NEW 369FB

THE ALL NEW BATH & 1/2 FLOOR PLAN VILANO FROM VANLEIGH RV:

Motor home style bedroom w/ opposing slides

Slide in bathroom w/ dual vanities and full size shower

Only bath & 1/2 under 39 ft

Over 6 ft wide pass-through storage

No carpet in the upper deck (bedroom/bath)

8 ft slide boxes in kitchen and living room

Motorhome style macerator toilet (Tecma)

6 ft 6 in ceiling height in bedroom/bath



Amber Glaze Wood Cabinetry | Pebble Furniture | Ceiling Fan



Living Area & 1/2 Bath



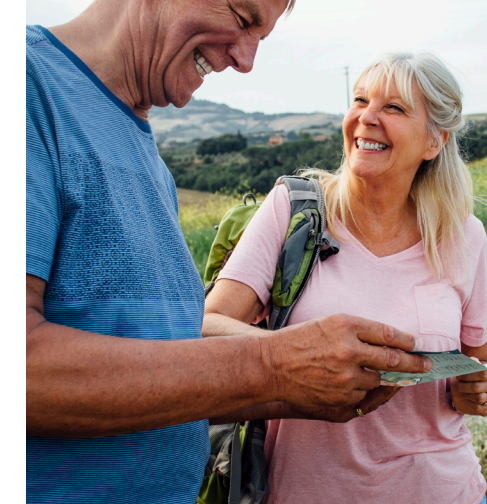
Master Suite & Front Full Bath



Standard Queen w/ King Optional



VILANO 369FB Bath & 1/2



GETTING THERE



Is Half

THE FUN





NOT ALL WHO  
  
 WANDER  
 — Are Lost —



375FL Front Living Great Room  
 Mocha Wood Cabinetry



VILANO 365RL



365RL Rear Living



365RL Standard King  
 w/ Queen Optional



365RL Rear Living Kitchen | Amber Glaze Wood Cabinetry



375FL Front Living Kitchen | English Chestnut Wood Cabinetry



VILANO 375FL



325RL Rear Living Kitchen | Mocha Wood Cabinetry



325RL Standard Queen w/ King Optional



VILANO  
 325RL



### LIVING AREA

- Full Profile Ceiling Throughout
- Full Overlay Hardwood Cabinetry and Faceframes
- Hardwood Slide-Out Fascia Throughout
- Hardwood Window Valances Throughout
- 8 ft Main Floor Slideout Boxes
- Multiplex Wiring System w/ Digital Homescreen
- Soft Touch Padded Vinyl Ceiling Throughout
- Recessed LED Ceiling Lighting Throughout
- Roller Shades (Night)
- Dimming Function on Living and Bedroom Area Lighting
- High Quality Furniture Made in the U.S.A.
- Ceiling Fan
- Dirt Devil® Central Vac System

### KITCHEN

- Solid Surface Kitchen Countertops
- Solid Surface Sink and Range Covers
- Residential Freendo Kitchen Faucet with Pull Down Sprayer
- Stainless Steel Microwave and Oven
- Residential Chef Collection Burner Range - Furrion
- 18 cu ft Samsung French Door Refrigerator
- 1,000 watt Pure Sine Wave Inverter - Magnum
- Stainless Drawer Guides
- Solid Surface Dinette Table and Chairs
- Legless Dinette Table
- Oversized 70/30 Stainless Steel Sink
- Galley Area Air Automatic Ceiling Vent
- Hardwood Ceiling Décor Package with Recessed LED Lighting
- Oversized Pantry with Motion Sensored Lighting
- Tile Backsplashes
- Convection Microwave

### HOME ENTERTAINMENT

- 50 in LED TV in Living Area
- 7200 BTU Residential Fireplace
- Sound Bar with Surround Sound in Living Area
- Entertainment Center with Bluetooth, DVD, Aux. Controls

- Exterior Speakers
- 32 in LED Bedroom TV
- Prewire for Solar Panels
- King Jack™ Digital Antennae

### BEDROOM

- Cool Gel Memory Foam™ King/Queen Mattress
- Dual USB Ports in Nightstands
- Backlit Handrail to Bedroom
- Solid Vinyl Flooring throughout Bedroom
- Hardwood Window Valances
- Residential Hardwood Headboard
- Hardwood Drawer Dresser
- Full-Sized Wardrobe with Motion Sensored Lighting
- Full-Sized Underbed Storage Area

### HEATING AND COOLING

- Dual Low-Pro 15000 BTU A/Cs Standard Coleman Mach 8
- Prewire for Third 15000 BTU A/C with Triple Zone Thermostat
- 42000 BTU Furnace
- 7200 BTU Electric Fireplace
- R-45 Floor and Roof Insulation
- R-11 Sidewall Insulation
- Whisper Quiet A/C System
- Fully Enclosed and Heated Underbelly with Heat Return
- 12V Electric Tank Heaters
- 10 gal Gas/Electric Quick Recovery Hot Water Heater
- 16 in Wide Return A/C Ducts for Max Airflow

### EXTERIOR AND CONSTRUCTION

- Noble T60 High Gloss Fiberglass Exterior
- Tubular Aluminum Framed Sidewalls
- 12V Electric Dump Gates for Black and Gray Tank with Manual Override
- 16 in on Center Tubular Aluminum Floor
- 16 in on Center Aluminum Roof Joists
- Framed, Laminated, and Insulated Slide Box Floors and Ceilings
- Laminated Slide Box End Walls

- Aluminum A/C Boxes Welded to Frame
- Roof Backer for All Crown Molding
- Tubular Aluminum Upper Support Wall
- Dual Copper Water Manifolds
- Powdercoated Aluminum Wet Bay
- Standard "G" Rated Tires
- Labeled Wire Harnesses
- Protective Wire Looms
- LED Exterior Lighting System
- Prewire for Backup Camera
- Slam-Latch Baggage Doors
- Motion Sensored Lighting in Pass-Through Compartment

### OPTIONAL EQUIPMENT

- Generator Prep
- Prewire for Traveler Satellite
- Residential Dishwasher (excluding the 375FL)
- Third 15000 BTU Low Profile A/C
- Second Awning Mounted to Slidebox
- Dual Pane Windows
- Solar Shades (Day Shades)
- Electric Power Cord Reel
- King Bed (standard 365RL/375FL)
- Gas/Electric Refrigerator
- 5.5 Onan Marquis Gold LP Generator
- Splendide Front Load Washer & Dryer
- Heat Pump

Some interior furnishings not included. Some photos shown in literature have optional equipment. All options may not be available in every model. Because of progressive improvements, specifications, standard and optional equipment are subject to change without notice or obligation. For a complete and up-to-date list of available options and specifications, as well as Vanleigh's full line of RVs, visit [vanleighrv.com](http://vanleighrv.com).

# VILANO



— BUILT AROUND YOU —



**VANLEIGH RV**



## BUILT AROUND YOU

We've always prided ourselves in putting our owners first. To build the best product and service it, with the same quality and care. It's at the core of who we are. We appreciate your consideration of Vanleigh RV.

— Bob and Leigh Tiffin

# All warranties are not created equal.



See why ours stand the test. At Vanleigh RV, building a quality coach is our primary focus. Our warranty reflects our confidence in the construction of our units. From the beginning phases of production, we have pressurized water on our units. Throughout our production process, we run systems checks on every component in the RV. Once your RV is completed, it is taken outside to our onsite campground where it is hooked up to full services and put through an additional PDI inspection. We are proud to offer this accountability to our customers along with the following basic limited warranties:

### 3 Year Construction Warranty:

The structure of the welded frame of the RV is warranted for 3 years (36 months)

### 1 Year Base Comprehensive Warranty:

Your coach has a limited warranty against defects in materials and workmanship for 12 months of ownership

### Ongoing Owner Support

Vanleigh is proud to offer exceptional customer support. E-mail us at [customercare@vanleighrv.com](mailto:customercare@vanleighrv.com) or call us at 662-612-4040. We build our units with tested and proven components. Many of these components carry their own respective warranties. Please see owner's manual for the warranties of components.



## VANLEIGH RV

BUILT AROUND YOU

26 Industrial Drive | Burnsville, MS 38833  
Phone 662-612-4040 | Fax 662-655-0913  
[customercare@vanleighrv.com](mailto:customercare@vanleighrv.com) • [www.vanleighrv.com](http://www.vanleighrv.com)



## TIFFIN

### YOUR LOCAL VANLEIGH RV DEALER:

Colton RV  
North Tonawanda, NY 14120  
(716) 694-0188  
(800) 628-4889  
[www.ColtonRV.com](http://www.ColtonRV.com)