

2014

Allegro RED®

TIFFIN MOTORHOMES



AMERICA'S FAVORITE MOTOR HOME BUILDER

**MADE TO MOVE YOU.**

**ALLEGRO RED 2014**

The most value-packed model in the Tiffin line-up.

**AS AN ENTRY-LEVEL DIESEL PUSHER**, the Allegro RED presents you with the best of both worlds: The exceptional affordability, reliability, and value of our entry-level Allegro merged with the fuel-efficient, power-packed advantages of a rear diesel engine. To this already attractive union, Tiffin ups the ante with a multitude of standard features considered luxury upgrades by other RV manufacturers: Automatic HWH hydraulic jacks. Diamond Shield protection. Hardwood cabinetry. Complete water filtration system. Full undercoating. And the list goes on. Take a closer look at the Allegro RED. There's a lot to like.

**FOR ADDITIONAL CONTENT**, download the free LAYAR app on your tablet or Smart Phone, and scan the photos with this logo:





SHOWN 33 AA WITH SILVER SAND EXTERIOR

TAKE A CLOSER LOOK AT THE COMPLETE 360 INTERIORS







ROTATING CAPTAIN'S CHAIRS



HIGH-DEFINITION REAR/SIDE MONITOR



OVERHEAD COCKPIT TV

## COCKPIT

# When you're behind this wheel, RED means go.

The Allegro RED is satisfying to drive, rewarding you with each press of the accelerator. Equipped with full air brakes, an exhaust brake, and an optional air horn, the coach is powered by a hefty Cummins ISB 6.7-liter turbocharged 340 HP diesel engine on a custom Freightliner® chassis. Air cushioned suspension, enhanced by nimble aluminum wheels, expertly balances ride and handling as road conditions change, ensuring smooth steering and easy maneuverability. The raised rail rear engine chassis design provides multiple benefits, creating a quieter, more spacious driver's cab in front and maximizing storage capacity underneath.

### ABOVE AND BEYOND

Thoughtful features throughout the driver's cab demonstrate Tiffin's understanding of RV owners, such as automatic HWH leveling jacks that stabilize the coach with a press of a lever. An ICC switch that flashes running lights to thank other drivers for assistance when passing or changing lanes. A power stairwell cover that fits across the entryway for more floor space. And a 100-gallon fuel tank that can be easily accessed from both sides of the coach.

### IN THE ZONE

Before take-off, optimize your view of the road with adjustable tilt steering and optional multi-position power captain's chair, and log your destination into the optional in-dash navigation system. Review your LED display for an instant system check, with reports on engine and transmission temperatures, oil pressure, and brake fluid level. Count on your computer co-pilot to also monitor "miles to empty," engine hours, trip meter, outside temperature, and, of course, the odometer.

### ALL AROUND YOU

Tiffin's exclusive Triplevision system transmits full-color images and sound to an in-dash monitor from cameras on sides and rear, allowing traffic to be viewed from multiple perspectives before changing lanes. The monitor can be calibrated for brightness, color, tint, and contrast, useful when transitioning between day and night use. When parked, the cameras can serve as a security system to keep tabs on activity around your coach.





TAKE A CLOSER LOOK AT OUR WINDOWS AND SHADES



**FLOOR PLANS**

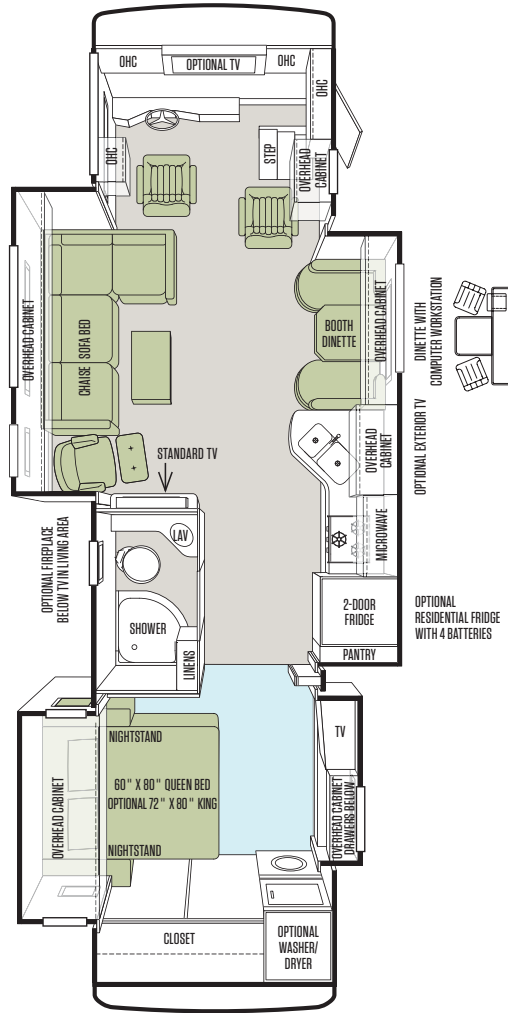
# Full-sized livability in your choice of dimensions.

With floor plans to accommodate the whole family or just the two of you, there's an Allegro RED that fits your lifestyle. Customize to your taste with interior décor palettes designed to add warmth and personality. You'll have plenty of luggage capacity to bring along everything you need, courtesy of a raised rail chassis that maximizes space under the coach, giving you up to 160 cubic feet of storage. For your convenience, basement compartments feature interior lights, Tiffin-built custom doors with single handle lockable latches, and full pass-through access.

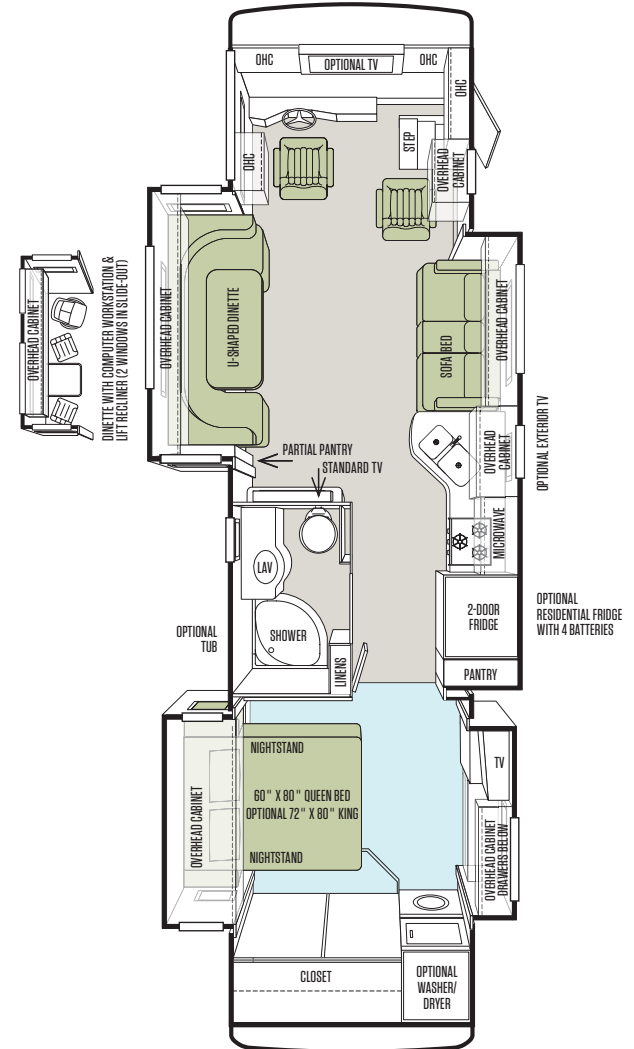
**TIFFIN INNOVATION: EXTRAORDINAIRE™ AC SYSTEM**

The interior ambiance in your Tiffin coach is enhanced by a state-of-the-art heating and cooling method, developed by Tiffin engineers for exclusive use in our luxury coaches. Modeled on residential-style systems, it uses adjustable registers and return vents placed the length of the ceiling to keep the airflow moving in a circular pattern to maintain your desired interior temperature. Whisper quiet and incredibly efficient, it easily lives up to its name — Extraordinaire.

33 AA



34 QFA



TAKE A CLOSER LOOK AT OUR INNOVATIVE AC SYSTEM

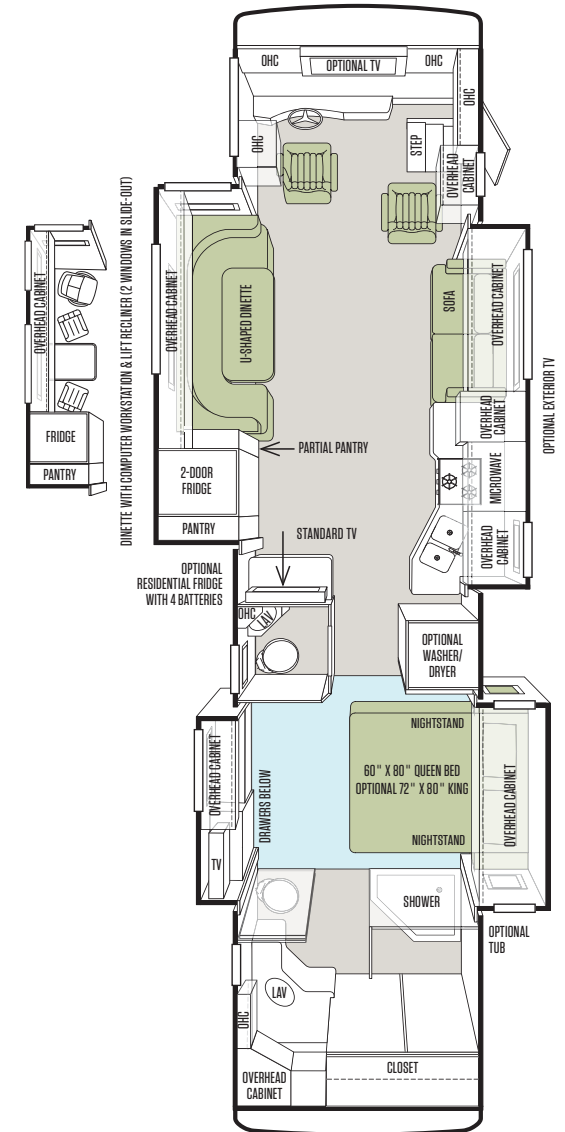
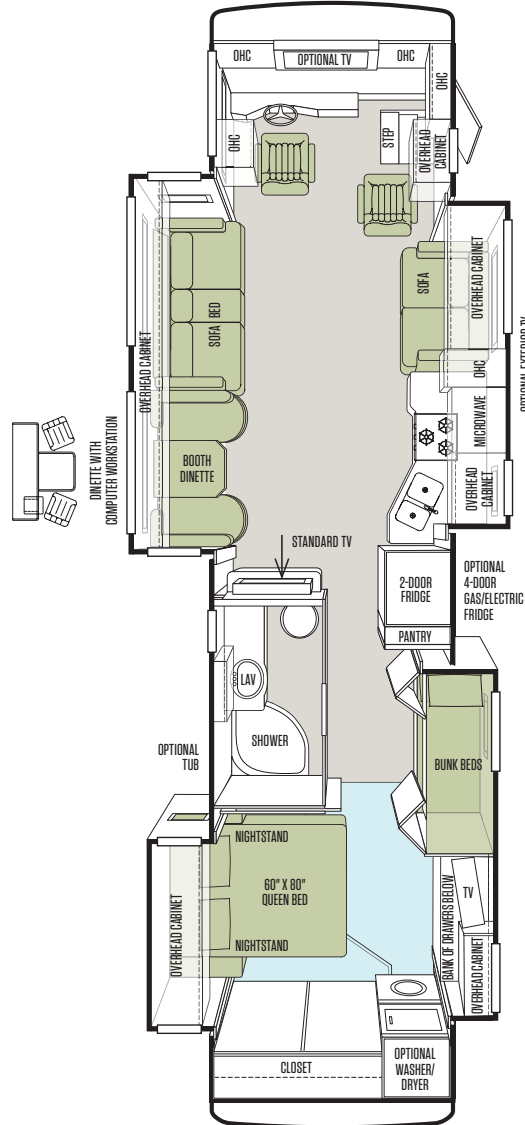
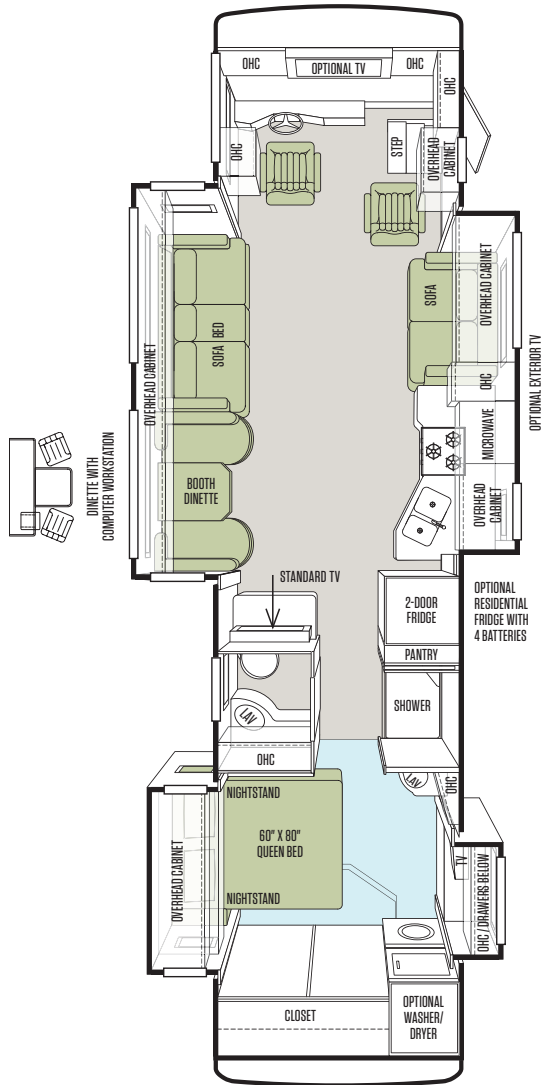


FLOOR PLANS

36 QSA

38 QBA

38 QRA







TAKE A CLOSER LOOK AT OUR SEAMLESS ROOF CONSTRUCTION



## LIVING AREAS

# Comforts you never imagined. Craftsmanship we never overlook.

There's nothing quite like exploring the world in your Allegro RED. Outside, ever-changing vistas promise new adventures, while inside spacious living quarters surround you with familiar comforts. With 7' ceilings, floor plans up to 38', and four slide-outs, the RED offers exactly the space you need, along with a host of helpful features to make the traveling life carefree, from residential-style air conditioning and energy-efficient LED lighting to wind-resistant awnings for entry door, slide-outs, and patio. This year, the beauty of high quality ceramic tile flooring, upgraded from vinyl, is now standard in the main cabin.

### RELAX

Five floor plans present a multiple choice of seating arrangements, allowing you to personalize conversation areas. Among the options are Halo leatherette sofas, offering a comfortable seat anytime; each sofa also converts to sleeping space. A popular choice for tailgaters is the U-shaped dinette, which seats seven around the table. After the celebration, with a few simple adjustments, it becomes an extra bed for a guest not ready to leave.

### ENTERTAIN

The Allegro RED excels in entertainment features, turning up the notch on movie night with a home theater surround sound entertainment system. Enjoy the action on the standard Panasonic HD TV positioned mid-ship, for viewing from the sofas, dinette, or pivoting cockpit chairs. Another HD TV, also standard, is perfectly placed for watching in bed. For more viewing areas, opt for an overhead TV in the cockpit or an exterior TV to enjoy under the patio awning.

### ENJOY

Concealed in the exterior front cap, and yet easily accessible when needed, is an 8.0 kw Onan® generator. This unobtrusive location directs sound waves away from the coach for more enjoyable usage. To reserve generator capacity, rely on an onboard 2000-watt inverter to power appliances, such as microwave, TVs, coffeemaker, even your hair dryer. Especially handy when staying in national park campgrounds, as many limit the use of generators or do not have electrical hook-ups.

SHOWN **33 AA FLOOR PLAN** CAMOMILE FABRIC SUITE WITH ENGLISH CHESTNUT CABINETS



OPTIONAL RECLINER BESIDE OPTIONAL FIREPLACE



OPTIONAL COMPUTER WORKSTATION



L-SHAPED CHAISE STANDARD ON 33 AA



DOUBLE BOWL STAINLESS STEEL SINK



OPTIONAL DINETTE WITH COMPUTER WORKSTATION



RECESSED THREE-BURNER COOKTOP

## KITCHEN

# Now serving a five-course kitchen at a starter price.

From ingenious storage solutions to top-rated name brand appliances, the Allegro RED kitchen makes meal prep as easy as pie. There's no skimping on key ingredients, either: Three-burner recessed cooktop with gas oven, microwave, and a double bowl kitchen sink come standard, as do solid-surface countertops, backsplashes, and cooktop covers. The galley is designed with a built-in two-door fridge with pantry, which can be customized with optional icemaker or additional doors. There's even a residential refrigerator option, a handy onboard convenience for tailgaters, families with growing teens, or anyone who wants all the comforts of home.

### EASY TO MAINTAIN

Housekeeping aboard the RED is never a chore. Floors in the main cabin are low maintenance ceramic tile, with stain-resistant carpet in slide-outs and bedroom. Opt for the central vacuum system and you can clean the entire coach in about 20 minutes. An optional Splendide washer is equipped with all the features of a top quality residential washer, just in a smaller travel-sized version. The accompanying dryer is also energy efficient to conserve power.

### EASY TO ORGANIZE

Storage in your RED kitchen will handily surpass the capacity of competitor's similar-sized models, as well as many larger models, too. As in all Tiffin coaches, cabinetry is handcrafted in our own wood mill and custom-fit to maximize available storage for a specific floor plan. Strong, sturdy cabinets with adjustable shelves are designed to house supplies securely during travel to minimize or eliminate the possibility of shifting or spilling. Drawers glide completely open for easy access to contents in back.



### TIFFIN STORE-IT-ALL™ ASSURANCE

Rest assured, this Tiffin coach will surpass a competitor's model of equivalent size in the quantity and quality of storage.





TAKE A CLOSER LOOK AT TIFFIN STORAGE IN ACTION







TAKE A CLOSER LOOK AT LED LIGHTING



## BEDROOM / BATH

# Is there a lovelier sound than peace and quiet?

Your private hideaway from the outside world is never far away with the Allegro RED master suite. Here, relaxing in restful silence, is when you'll truly appreciate Tiffin's superior construction methods, from the thick multi-layered fiberglass walls and padded ceiling to custom-built dual-pane windows. For maximum exterior protection from water, wind, and noise intrusion, a one-piece insulated fiberglass roof cap, a Tiffin innovation, fits snugly over the entire coach. Solar and privacy shades block prying eyes or sun rays, while the heavy duty aluminum frame entry door locks securely with deadbolt for complete peace of mind.

### SLEEP

Rest assured, you'll get your beauty sleep on the master suite's hotel-quality innerspring mattress, which comes with standard queen or optional king. With the right mix of floor plan and furniture options, the RED can host up to eight overnight guests. The bunk bed option is perfect for families. Kids love having their own space, and since each bunk is designed exactly the same with a window, privacy curtain, and optional monitor for DVD player, there's less chance of squabbling.

### BATHE

Bathing quarters in the Allegro RED vary by floor plan yet all provide a comfortable level of privacy, as well as plentiful storage and top-quality finishings. The one-piece molded fiberglass shower stall is an attractive standard feature, while families traveling with children may prefer the optional tub. Two onboard bathrooms is a popular choice, with one reserved for guests and another exclusively for the master bedroom occupants. Located the entire width of the rear coach, the en-suite bath offers a more residential-style layout.

SHOWN **33 AA FLOOR PLAN** CAMOMILE FABRIC SUITE WITH ENGLISH CHESTNUT CABINETS



HANDCRAFTED CABINERY



SOLID SURFACE COUNTERTOPS IN BATH



MOLDED FIBERGLASS SHOWER STALL



STACKED WASHER/DRYER

## INTERIOR DÉCOR

With upscale finishings and intricate design details, Tiffin Motorhomes sets the standard for interior luxury in the RV industry, providing a beautiful backdrop personalized to your taste. For the 2014 Allegro RED, you have three exclusive interior fabric suites to choose from. All designed to complement the hardwood cabinetry built by hand by our Red Bay craftsmen, as well as your personal decorative touches.

### CABINETS



MEDIUM ALDERWOOD



ENGLISH CHESTNUT

### FLOORING



CARPET



TILE

### AUTUMN FABRIC SUITE

#### LIVING AREA



DINETTE



ACCENT



COUNTERTOPS

#### SOFA & DRIVER/PASSENGER SEAT



STANDARD LEATHER

#### BEDROOM



MAIN



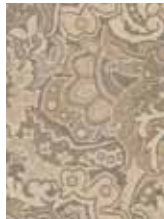
ACCENT



BACKSPASH

### CAMOMILE FABRIC SUITE

#### LIVING AREA



DINETTE



ACCENT



COUNTERTOPS

#### SOFA & DRIVER/PASSENGER SEAT

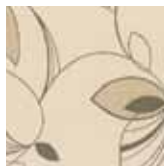


STANDARD LEATHER

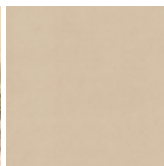
#### BEDROOM



MAIN



ACCENT



BACKSPASH

### SUNSET FABRIC SUITE

#### LIVING AREA



DINETTE



ACCENT



COUNTERTOPS

#### SOFA & DRIVER/PASSENGER SEAT

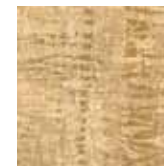


STANDARD LEATHER

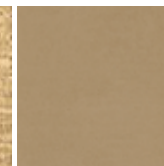
#### BEDROOM



MAIN



ACCENT



BACKSPASH

Allegro RED cabinet doors & fascias are made of solid wood, & all cabinet finishes are available in combination with any fabric suite. All options may not be available in every model. Because of progressive improvements, specifications, standard & optional equipment are subject to change without notice or obligation. For a complete & up-to-date list of available options & specifications, visit [tiffinmotorhomes.com](http://tiffinmotorhomes.com)



## SPECIFICATIONS

### LIVING AREA/DINETTE

AVAILABLE OPTIONS:	33 AA	34 QFA	36 QSA	38 QBA	38 QRA
Contemporary Booth Dinette with Large Pullout Storage Drawers	S	NA	S	S	NA
Halo Leatherette DE Sofa/Sleeper	NA	NA	O	O	NA
Halo Leatherette Air Coil Hide-A-Bed Sofa/Sleeper on Passenger Side	NA	S	NA	NA	O
Halo Leatherette L-shaped Chaise Sofa/Sleeper on Driver Side	S	NA	NA	NA	NA
Halo Leatherette Air Coil Hide-A-Bed Sofa/Sleeper on Driver Side	NA	NA	O	O	NA
Halo Leatherette DE Sofa/Sleeper	NA	NA	O	O	NA
Halo Leatherette U-shaped Dinette with Drop Down Table	NA	S	NA	NA	S
Dinette with Computer Workstation	O	NA	O	O	NA
Dinette with Computer Workstation & One Euro Recliner	NA	O	NA	NA	O
Fireplace Below Midsection TV	O	NA	NA	NA	NA

### KITCHEN

#### STANDARD ON ALL MODELS:

- Double Bowl Kitchen Sink with Single Lever Bronze Faucet
- Solid Surface Galley Countertop
- Solid Surface Backsplashes
- Solid Surface Cooktop Cover
- Large 2-door Refrigerator with Pantry
- Stacked Drawers
- 3-burner Recessed Cooktop with Gas Oven
- Microwave with Exterior Venting

AVAILABLE OPTIONS:	33 AA	34 QFA	36 QSA	38 QBA	38 QRA
Convection Microwave	O	O	O	O	O
Cooktop & Convection Microwave (No Gas Oven)	O	O	O	O	O
2-door Gas/Electric Refrigerator with Icemaker	O	O	O	O	O
4-door Gas/Electric Refrigerator with Icemaker	O	O	O	O	O
Solid Wood Refrigerator Panels	O	O	O	O	O
Residential Refrigerator with 4 Batteries	O	O	O	NA	O

### BATH

#### STANDARD ON ALL MODELS:

- Medicine Cabinet
- Skylight in Shower & LED Light
- Bronze Vanity Faucet
- Molded Fiberglass One-piece Shower
- Solid Surface Vanity Top
- Fantastic® Fan

AVAILABLE OPTIONS:	33 AA	34 QFA	36 QSA	38 QBA	38 QRA
Tub (in Place of Shower)	NA	O	NA	O	O

### BEDROOM

#### STANDARD ON ALL MODELS:

- Wardrobe with Automatic Light
- Bed Comforter with Throw Pillows
- TV
- Wall-to-wall Carpet
- Innerspring Queen Mattress (60" x 80")
- Chainless Solar/Privacy Shades

AVAILABLE OPTIONS:	33 AA	34 QFA	36 QSA	38 QBA	38 QRA
King Bed Mattress (72" x 80")	O	O	NA	NA	O
Bunk Beds (32" x 72") with Bunk Ladder/Convertible Wardrobe	NA	NA	NA	S	NA
DVD Monitors in Bunk Beds	NA	NA	NA	O	NA
Bedroom Ceiling Fan	O	O	O	O	O

**WARRANTY**

You won't find a better warranty because you won't find a better-built coach.

The Tiffin Five-Star Warranty.  
The best in the business, bar none.



At Tiffin Motorhomes, we build for quality first and foremost, limiting our production to just 12 coaches a day to ensure meticulous craftsmanship. It may not be the most business-savvy way to run a company but it is the best way. By investing the time and effort to do things right, we want you, as a Tiffin owner, to have the utmost confidence in your coach, as well as a peace of mind you won't find with other manufacturers. You see, not only do we stand proudly behind our product, we stand behind you as well.

★ 10

**YEAR  
CONSTRUCTION  
WARRANTY**

The structural integrity of the welded frame of entire coach is warranted for 10 years.

★ 5

**YEAR  
DELAMINATION  
WARRANTY**

We guarantee against all exterior fiberglass delamination or wall separation for 5 years.

★ 1

**YEAR  
COMPREHENSIVE  
WARRANTY**

Your coach is warranted against defects in materials and workmanship for 12 months, or 12,000 miles of use.

★ 1

**YEAR  
PREMIER COACH  
ROADSIDE SERVICES**

Available through Coach-Net, the country's largest RV emergency road service, this program provides 24/7 access to responsive roadside and technical assistance.

★ Ongoing  
Owner  
Support

No other motor home company can compare with Tiffin's exceptional customer service. Email us at [service@tiffinmotorhomes.com](mailto:service@tiffinmotorhomes.com) or call us at 256/356.0261.



## EXTERIOR DÉCOR

### FULL-BODY PAINT SCHEMES



GOLD CORAL



ROCKY MOUNTAIN BROWN



MAROON CORAL



SILVER SAND



OCEANSIDE



SUNLIT SAND

### PREMIUM PAINT SYSTEM

Our six-step full-body paint system features premium grade BASF paints sealed with three layers of superclear coat with ultraviolet protection. An additional layer of scratch-resistant plastic coating protects the front of the coach, stairwell, and entry door lock.

TAKE A CLOSER LOOK AT OUR PAINT SYSTEM IN ACTION



## SPECIFICATIONS

### COCKPIT

#### STANDARD ON ALL MODELS:

- Tilt Steering Wheel
- Dual Dash Fans
- Wood Drawers in Dash
- Lighted Instrument Panel
- CD Player & AM/FM Stereo
- 12 V Dash Receptacle
- Power Solar/Privacy Windshield Shades
- 12 V Disconnect Switch
- USB Dash Receptacle
- Fire Extinguisher
- Manual Solar/Privacy Shades on Side Windows
- Adjustable Seatbelt Brackets
- Halo Leatherette Power Driver & Passenger Seats with Passenger Footrest

AVAILABLE OPTIONS:	33 AA	34 QFA	36 QSA	38 QBA	38 QRA
Satellite-ready Radio (Requires Subscription)	<input type="checkbox"/>	<input type="checkbox"/>	<input type="checkbox"/>	<input type="checkbox"/>	<input type="checkbox"/>
In-dash Navigation System	<input type="checkbox"/>	<input type="checkbox"/>	<input type="checkbox"/>	<input type="checkbox"/>	<input type="checkbox"/>
Overhead TV	<input type="checkbox"/>	<input type="checkbox"/>	<input type="checkbox"/>	<input type="checkbox"/>	<input type="checkbox"/>

### GENERAL INTERIOR

#### STANDARD ON ALL MODELS:

- High Gloss Raised Panel Hardwood Cabinet Doors
- Solid Wood Cabinet Fascias
- Soft Touch Vinyl Ceiling
- Midsection TV
- Ceramic Tile Flooring in Living Room Area
- Scotchgard® Treated Carpet in Slide-outs
- Ball Bearing Drawer Slides
- Chainless Solar/Privacy Shades
- Power Roof Vents
- Tank Level Monitor System
- Smoke Detector
- 10-gallon DSI Gas/Electric Water Heater
- Power Step Well Cover
- 2000 Watt Inverter
- Carbon Monoxide Detector
- LED Bulbs
- Extraordinaire™ AC System
- LPG Leak Detector
- Home Theater Surround Sound System (Includes DVD Player)

AVAILABLE OPTIONS:	33 AA	34 QFA	36 QSA	38 QBA	38 QRA
Medium Alderwood Solid Cabinet Doors & Drawer Fronts	<input type="checkbox"/>	<input type="checkbox"/>	<input type="checkbox"/>	<input type="checkbox"/>	<input type="checkbox"/>
English Chestnut Solid Cabinet Doors & Drawer Fronts	<input type="checkbox"/>	<input type="checkbox"/>	<input type="checkbox"/>	<input type="checkbox"/>	<input type="checkbox"/>
Stacked Washer/Dryer	<input type="checkbox"/>	<input type="checkbox"/>	<input type="checkbox"/>	<input type="checkbox"/>	<input type="checkbox"/>
Central Vacuum Cleaner	<input type="checkbox"/>	<input type="checkbox"/>	<input type="checkbox"/>	<input type="checkbox"/>	<input type="checkbox"/>

### GENERAL EXTERIOR

#### STANDARD ON ALL MODELS:

- Fiberglass Front & Rear Caps
- Tinted One-piece Windshield
- 8.0 kw Onan® Generator
- Horizontal Mounted Wipers
- Heated Power Mirrors
- Exterior Patio Light
- Power Patio Awning with Aluminum Weather Shield
- Automatic Entry Door Awning
- Awning(s) over Slide-outs
- Chrome Wheel Liners
- Two High Profile Roof ACs
- Double Electric Step
- 1/4" Thick Single Pane Windows
- Convenient Access Doors with Gas Shocks
- Single Handle Lockable Storage Door Latches
- Heated Water & Holding Tank Compartment
- Four 6 V Auxiliary Batteries
- Digital TV Antenna
- Cable TV Ready Hook-up
- 50 Amp Service
- Black Holding Tank Flush System
- Exterior Rinse Hose/Shower
- Gravity Water Fill
- Color Back-up Monitor
- 110 V Exterior Receptacle
- Undercoating
- Roof Ladder
- External Tripod Satellite Hook-up
- Exterior Storage Compartment Lights
- Chrome Mirror Heads with Integrated Turn Signal Cameras
- BASF Full-body Paint
- Hydraulic Automatic Leveling Jacks
- Front Cap Protective Film

AVAILABLE OPTIONS:	33 AA	34 QFA	36 QSA	38 QBA	38 QRA
Automatic Satellite Dish*	<input type="checkbox"/>	<input type="checkbox"/>	<input type="checkbox"/>	<input type="checkbox"/>	<input type="checkbox"/>
Air Horns	<input type="checkbox"/>	<input type="checkbox"/>	<input type="checkbox"/>	<input type="checkbox"/>	<input type="checkbox"/>
Two High Profile Roof ACs with Heat Pumps (Requires 8.0 kw Generator/Replaces Both Standard ACs)	<input type="checkbox"/>	<input type="checkbox"/>	<input type="checkbox"/>	<input type="checkbox"/>	<input type="checkbox"/>
Exterior TV	<input type="checkbox"/>	<input type="checkbox"/>	<input type="checkbox"/>	<input type="checkbox"/>	<input type="checkbox"/>

\*High-definition programming is not available on a domed satellite antenna unless you subscribe to DISH Network®.



## SPECIFICATIONS

### AUTOMOTIVE

#### STANDARD ON ALL MODELS:

- Raised Rail Chassis Frame
- Air Ride Suspension
- Full Air Brakes
- Exhaust Brake

### CHASSIS OPTIONS

FREIGHTLINER® REAR ENGINE DIESEL CHASSIS:	33 AA	34 QFA	36 QSA	38 QBA	38 QRA
Cummins ISB 6.7-liter Electronic Diesel, Turbocharged, Aftercooled Engine	S	S	S	S	S
Peak HP – 340 HP @ 2,600 RPM	S	S	S	S	S
Peak Torque (lb – Ft. Max Net) 660 @ 1,600 RPM	S	S	S	S	S
Allison 2500 MH 6-speed Automatic with Lock-up	S	S	S	S	S
GAWR – Front	12,000 lb	12,000 lb	12,000 lb	12,000 lb	12,000 lb
GAWR – Rear	17,500 lb	17,500 lb	17,500 lb	17,500 lb	17,500 lb
GVWR	29,500 lb	29,500 lb	29,500 lb	29,500 lb	29,500 lb
GCWR	33,000 lb	33,000 lb	33,000 lb	33,000 lb	33,000 lb
Wheel Base	198"	198"	228"	252"	252"
Tire Size	275/80R22.5	275/80R22.5	275/80R22.5	275/80R22.5	275/80R22.5
Fuel Tank (Gallons) – Dual Fuel Fill	100	100	100	100	100
DEF Tank* (Gallons)	13	13	13	13	13
Alternator Amps	160	160	160	160	160
Trailer Hitch Capacity	5,000 lb	5,000 lb	5,000 lb	5,000 lb	5,000 lb

\*Diesel Exhaust Fluid (DEF) is the active component used in Selective Catalytic Reduction (SCR) engines to reduce nitrogen oxide emissions by 90% to meet EPA standards.

### WEIGHTS & MEASURES

OVERALL:	33 AA	34 QFA	36 QSA	38 QBA	38 QRA
Overall Length (Approximate)	35' 3"	36' 1"	36' 9"	38' 9"	38' 9"
Overall Height with Roof Air (Maximum)	12' 10"	12' 10"	12' 10"	12' 10"	12' 10"
Interior Height	84"	84"	84"	84"	84"
Overall Width	101"	101"	101"	101"	101"
Interior Width	96"	96"	96"	96"	96"
Fresh Water (Gallons)	90	90	90	90	90
Black Water (Gallons)	50	50	50	50	50
Grey Water (Gallons)	70	70	70	70	70
LPG Tank (Gallons; can only be filled to 80% capacity)	24	24	24	24	24
Basement Storage (Cubic Feet – Approximate)	83.75	87	150	160	160
Minimum Garage Height	13'	13'	13'	13'	13'



All options may not be available in every model. Because of progressive improvements, specifications, standard & optional equipment are subject to change without notice or obligation. For a complete & up-to-date list of available options & specifications, as well as information on Tiffin's full line of motor homes, visit [tiffinmotorhomes.com](http://tiffinmotorhomes.com) or scan the QR Code with your Smart Phone.



# We build our coaches to the highest standards: Yours.

Tiffin Motorhomes never set out to become the largest Class A manufacturer in the country. Our goal was to build the kind of motor home that we — a family who loves the RV lifestyle — would want to own, a coach with advanced engineering, the most durable parts, the finest materials. A motor home that makes each and every road trip feel like a vacation — relaxed and fun.

From the start, we consulted the experts, the people who put motor homes to the test — our kindred spirits, fellow RV owners. Today, more than four decades later, this ongoing collaboration is at the heart of our success.

Listening to what our customers want is the reason Tiffin leads the industry in innovations. Offers more floor plans than anyone else. More storage. The industry's best warranty. It's why RV dealers consistently give us their highest rankings for quality, design, reliability, and value. It's why, among more than 50 Class A models on the market, our coaches are consistently among the top sellers. And it's why we've earned the highest owner loyalty rating in the industry.

Any motor home can get you from here to there. The feeling you get as you enjoy every carefree mile in between is why you buy a Tiffin.




**MADE TO MOVE YOU.**

## **GO TO TIFFINMOTORHOMES.COM**

Visit us on the web for more information on the 2014 Allegro RED and all 2014 Tiffin Motorhomes, along with the latest product and specification updates. Plus, watch videos and see other exclusive web content. You can also join us on Facebook and Twitter.

FOR PARTS & SERVICE CALL **256/356.0261**

 [FACEBOOK.COM/TIFFINMOTORHOMES](https://www.facebook.com/tiffinmotorhomes)

 [TWITTER.COM/TIFFINMOTORHOME](https://www.twitter.com/tiffinmotorhome)

### YOUR LOCAL TIFFIN DEALER:

**Colton RV**  
North Tonawanda, NY 14120  
(716) 694-0188  
(800) 628-4889  
[www.ColtonRV.com](http://www.ColtonRV.com)

**Colton RV**  
Orchard Park, NY 14127  
(716) 957-3250  
(800) 628-4889  
[www.ColtonRV.com](http://www.ColtonRV.com)

