

ADMIRAL

2020 CLASS A GAS



HOLIDAY
RAMBLER

holidayrambler.com





HOLIDAY RAMBLER

Lead the Way

The 2020 Admiral gives luxury a whole new meaning. Across five versatile floorplans, you'll find premium features, modern décors, and impeccable styling. In just the kitchen alone, cabinetry is enhanced by frosted glass doors, a glass cover completes the range for more cooking space, and under cabinet lighting creates a relaxed atmosphere in the evening. The Admiral also features an accent wall so you can add that personalized touch, an Illumaplex system for whole coach control, and a Hide-A-Loft™ drop-down queen bed.

The Admiral also brings all-new updated technology, furniture, and appliances, including an Insignia residential refrigerator and WiFiRanger™ that will boost your WiFi connectivity. Then, there's the Bluetooth® stereo in the bedroom and an optional washer and dryer.

Outside, the Admiral features beautiful exterior graphics with optional partial paint that's complemented by frameless windows. Here, you'll also find pass-through storage for all your gear, plus a 50" TV and exterior shower for more time under the sun. And no matter how you travel, you're accompanied by the Bilstein® Steering Stabilizer System and solid construction.



ADMIRAL 34J
SUNRISE GRAPHICS



THE ADMIRAL CHASSIS

The Admiral chassis puts strength, stability, and reliability front and center. Perfect for trips requiring large carrying capacities, and built to store everything you need with pass-through storage. The Admiral is built on the ideal chassis for optimum balance and control on Holiday Rambler gas motorhomes.



Chassis Warranty provided by Ford®



28A

29M

32S

34J

35R

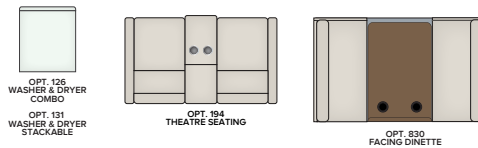
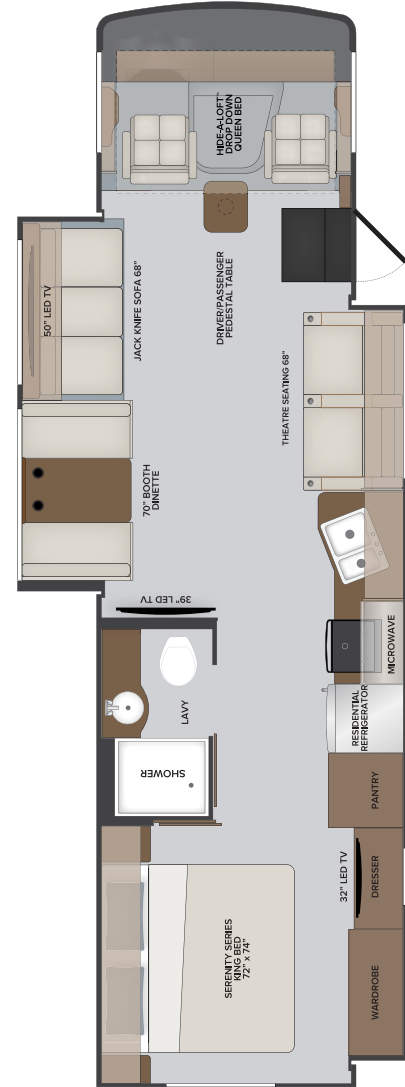
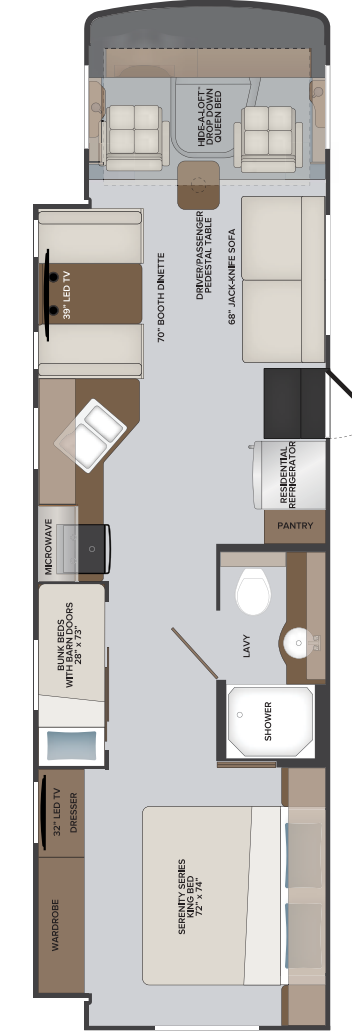
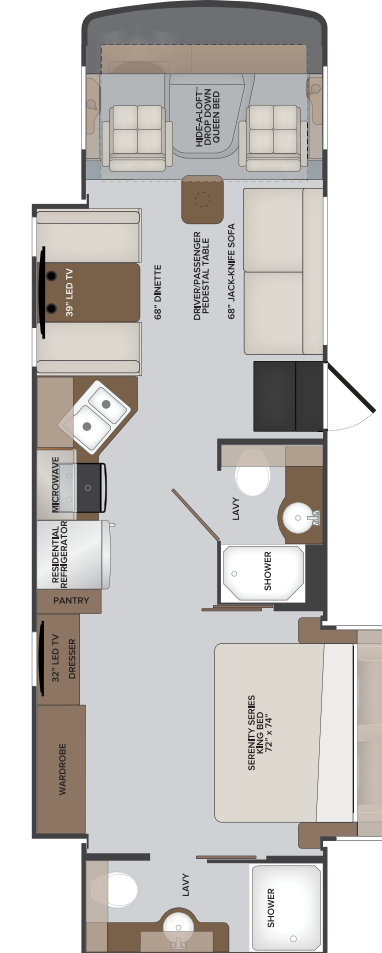
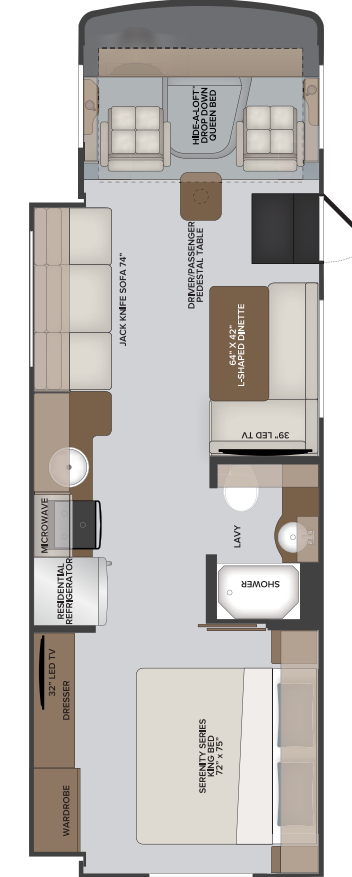
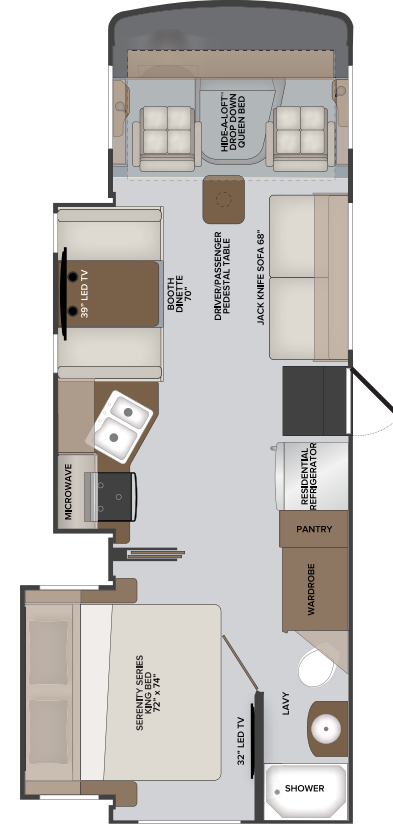
ADMIRAL FLOORPLANS

With the 2020 Admiral's, you'll also find new modern decor packages and styling options, as well as floorplan-specific features like stackable washer/dryer prep (35R), and even an exterior kitchenette on the 29M and 34J. The bunk bed area has added functional stylized barn doors in the 34J floorplan.

There's plenty of room and storage to bring along all your favorite comforts of home. Thanks to well thought-out floorplans with our long list of standards and additional upgradeable features, there's more standards now than ever to make you feel right at home with functional living space.

The 32S has two full lavy areas, all the floorplans boast generous master bedrooms and wardrobe areas. The 35R boasts a large 50" LED TV and standard theatre seating for a roomy entertaining area or enough space for a rainy day in on a long trip making you a total envy at the campground.

So, take your pick from five spacious floorplans, load-up and hit the road.



OPT. 126
WASHER & DRYER
COMBO

OPT. 131
WASHER & DRYER
STACKABLE

OPT. 194
THEATRE SEATING

OPT. 830
FACING DINETTE

OPTIONS

- 089 UPGRADED WIFI PACKAGE
- 096 KING STATIONARY SATELLITE SYSTEM
- 105 DOMETIC 8CF DOUBLE DOOR REFRIGERATOR-LP
- 126 WASHER/DRYER-ALL IN ONE COMBO
- 131 WASHER/DRYER-STACKABLE
- 194 THEATRE SEATING SOFA
- 230 ROOF VENT RAIN COVERS
- 331 5.5KW GEN W/DUAL A/C

- 342 DUAL A/C W/EMS-LP REFRIGERATOR
- 343 DUAL A/C W/EMS-RES REFRIGERATOR
- 435 CSA-PKG FORD
- 447 CSA FORD INSTRUMENT PANEL
- 605 DUAL GLAZED WINDOWS
- 830 FACING DINETTE
- 953 POWER DRIVER SEAT

OPTIONS:
089, 096, 105, 230, 342, 343,
435, 447, 605, 953

OPTIONS:
089, 096, 105, 230, 331, 435,
447, 605, 830, 953

OPTIONS:
089, 096, 105, 194, 230, 331,
435, 447, 605, 953

OPTIONS:
089, 096, 105, 194, 230, 435,
447, 605, 953

OPTIONS:
089, 096, 105, 126, 131, 230, 435,
447, 605, 953



ADMIRAL 28A
CHATEAU DÉCOR WITH
NUTMEG CABINETRY

ADMIRAL 28A
CHATEAU INTERIOR WITH
NUTMEG CABINETS



THEATRE SEATING OPTION
(STANDARD ON 35R)
BROWNSTONE DÉCOR WITH
WHISPERING WIND CABINETS



ADMIRAL STANDARDS | OPTIONS

| EXTERIOR | 28A | 29M | 32S | 34J | 35R |
|--|-----|-----|-----|-----|-----|
| Aerodynamic Fiberglass Cap w/Hood and Automotive Headlighting | S | S | S | S | S |
| Rear Laminated Wall w/Automotive Lighting | S | S | S | S | S |
| ABS Wheel Well Trims | S | S | S | S | S |
| TPO Roof - Thermoplastic Polyolefin | S | S | S | S | S |
| Legged Electric Patio Awning w/LED Lighting | S | S | S | S | — |
| Legless Electric Patio Awning w/LED Lighting | — | — | — | — | S |
| Entry Awning | — | — | — | — | S |
| Radiused Entry Door w/Screendoor/Strut/Latch/Deadbolt Lock | S | S | S | S | S |
| Window Above Entry Door | S | S | S | S | — |
| Slide-Out Awning Toppers (Above All Slideouts) | S | S | S | S | S |
| Slam Latch Luggage Door Handles - Black | S | S | S | S | S |
| Entry Grab Handle | S | S | S | S | S |
| Power Entry Step w/Light - Exterior | S | S | S | S | S |
| Bottom/Side Swing Radiused, Color Matched Fiberglass Luggage Doors | S | S | S | S | S |
| Single Pane Frameless Windows | S | S | S | S | S |
| Dual Pane Frameless Windows | O | O | O | O | O |
| Patio LED Light | S | S | S | S | S |
| Clearance/Marker Lighting Front/Side/Rear | S | S | S | S | S |
| Gravity Fresh Water Fill | S | S | S | S | S |
| Enclosed Exterior Waste Station w/Discharge Valves | S | S | S | S | S |
| Trailer Hitch w/7-Way Round Tow Connection (8,000 lbs.) | S | S | S | S | S |
| TV Antenna - Unidirectional King Controls Jack Antenna | S | S | S | S | S |
| LP Connection | S | S | S | S | S |
| Four Point Fully Automatic Hydraulic Leveling Jacks | S | S | S | S | S |
| Rear Ladder | S | S | S | S | S |
| Vinyl Graphics | S | S | S | S | S |
| Partial Paint w/Vinyl Graphics | — | O | O | O | O |
| Roof Vent Rain Covers | O | O | O | O | O |
| Roof Mount Satellite Dish Prep | S | S | S | S | S |
| KING® Universal Satellite System | O | O | O | O | O |
| Exterior Kitchen w/Mini-Fridge/Microwave/Sink/Storage | — | S | — | S | — |

| CAB EXTERIOR | 28A | 29M | 32S | 34J | 35R |
|--|-----|-----|-----|-----|-----|
| Automotive One-piece Windshield | S | S | S | S | S |
| Daytime Running Lights | S | S | S | S | S |
| Driver/Passenger Slider Windows | S | S | S | S | S |
| Automotive Style Windshield Wiper System | S | S | S | S | S |
| Doggy Window - Passenger | S | S | S | S | S |
| Exterior Mounted Sideview Cameras | S | S | S | S | S |
| Power/Heated Mirrors w/Turn Signals - Remote, Black | S | S | S | S | S |
| CAB INTERIOR | 28A | 29M | 32S | 34J | 35R |
| Driver Chair w/Reclining Back/Swivel - Manual Controls | S | S | S | S | S |
| Driver Chair w/Reclining Back/Swivel - 6-way Power Controls | O | O | O | O | O |
| Passenger Chair w/Reclining Back, Swivel and Manual Controls | S | S | S | S | S |
| Side Panels w/Cupholders - Driver/Passenger | S | S | S | S | S |
| Cupholders - Driver/Passenger | S | S | S | S | S |
| Power Windshield Roller Shade | S | S | S | S | S |
| Manual Roller Shades - Driver/Passenger Window | S | S | S | S | S |
| Overhead Map Lighting - Driver/Passenger | S | S | S | S | S |
| Black Instrument Gauges w/Electronic Information Center | S | S | S | S | S |
| Dash Air Conditioning/Heat High-output | S | S | S | S | S |
| Electronic Cruise Control | S | S | S | S | S |
| Windshield Wipers w/Delay | S | S | S | S | S |
| Remote Switch for Power/Heated Mirrors | S | S | S | S | S |
| Steering Wheel w/Tilt Column | S | S | S | S | S |
| Boss® Stereo w/AM/FM/Bluetooth® w/Backup Camera Screen | S | S | S | S | S |
| Side Console Dash Stereo Speakers | S | S | S | S | S |
| USB and Auxiliary Inputs | S | S | S | S | S |
| Seat Belts - 3 Point Driver & Passenger w/Adjustable Straps | S | S | S | S | S |
| 12V Accessory Ports | S | S | S | S | S |
| 110-Volt AC Outlets | S | S | S | S | S |
| Automotive Style Dash w/Workstation | S | S | S | S | S |
| Generator On/Off Switch | S | S | S | S | S |
| Colored Fiberglass Engine Cover w/Snack Tray | S | S | S | S | S |
| Auto Leveling Jack Controls | S | S | S | S | S |

| Center Table - Driver/Passenger | S | S | S | S | S |
|---|-----|-----|-----|-----|-----|
| Auxiliary Start Switch | S | S | S | S | S |
| Hide-A-Loft™ Drop Down Queen Bed | S | S | S | S | S |
| INTERIOR | 28A | 29M | 32S | 34J | 35R |
| Sofa - Jack-knife | S | S | S | S | S |
| Sofa - Theatre Seating | O | — | O | O | S |
| Facing Booth Dinette w/Dinette Table/Single Door Storage | S | O | S | S | S |
| L-Shape Dinette w/Single Door Storage | — | S | — | NA | — |
| Solid Surface Galley Top w/Sink Covers | — | — | S | S | S |
| SurfX Tops Throughout (Excluding Galley) | — | — | S | S | S |
| SurfX Tops Throughout | S | S | — | — | — |
| Feature Wall w/Accent Wall Covering | S | S | S | S | S |
| Flat Ceiling w/Soft-Touch Vinyl | S | S | S | S | S |
| Lino Flooring Throughout | S | S | S | S | S |
| Non-Ozite Lined Cabinet Interiors w/Adjustable Shelving | S | S | S | S | S |
| Full Extension Drawer Guides w/Latches | S | S | S | S | S |
| Hidden Euro Hinges and Struts | S | S | S | S | S |
| Cabinet Doors - Solid Wood, Raised Panel | S | S | S | S | S |
| Galley Overhead Glass Inserts | S | S | S | S | S |
| Slideout Fascia - Interior Wood Color Coordinating | S | S | S | S | S |
| Valances w/Lambrequins | S | S | S | S | S |
| Manual Night Roller Shades | S | S | S | S | S |
| Energy Efficient 3" LED Flush Mount Ceiling and Under Cabinet Reading Lights Throughout | S | S | S | S | S |
| Faucets/Fixtures/Hardware Brushed Nickel | S | S | S | S | S |
| INTERIOR ENTRY | 28A | 29M | 32S | 34J | 35R |
| Battery Disconnect | S | S | S | S | S |
| Interior Entry Grab Handle - Metal | S | S | S | S | S |
| Entry Steps w/Molded Rubber Tread | S | S | S | S | S |
| KITCHEN | 28A | 29M | 32S | 34J | 35R |
| Refrigerator - Residential Stainless Steel - Insignia | S | S | S | S | S |
| Refrigerator LP - 8 cu.ft. - Dometic | O | O | O | O | O |
| Range w/Oven 3-Burner Drop-In | S | S | S | S | S |
| Microwave Stainless Steel Over the Range | S | S | S | S | S |

| Backsplash | S | S | S | S | S |
|---|-----|-----|-----|-----|-----|
| Sink - Stainless Steel Single Bowl | — | S | — | — | — |
| Sink - Stainless Steel Double Bowl | S | — | S | S | S |
| Residential Faucet - Single Handle w/Pullout Sprayer | S | S | S | S | S |
| Adjustable Shelves Throughout | S | S | S | S | S |
| Power Ceiling Vent | S | S | S | S | S |
| BEDROOM/ BUNK AREA | 28A | 29M | 32S | 34J | 35R |
| King Bed | S | S | S | S | S |
| Bunk Beds | — | — | — | S | — |
| Designer Bedspread, Headboard, Pillow Shams & Pillows | S | S | S | S | S |
| 120V/USB Ports | S | S | S | S | S |
| Reading Lights | S | S | S | S | S |
| LAVY | 28A | 29M | 32S | 34J | 35R |
| Sink - Top-Mounted Stainless Steel | S | S | S | S | S |
| Residential Faucet - Single Handle | S | S | S | S | S |
| Medicine Cabinet w/Mirror | S | S | S | S | S |
| ABS Shower Surround | S | S | S | S | S |
| Glass Shower Door | S | S | S | S | S |
| Shower Skylight | S | S | S | S | S |
| Metal Shower Head w/Sliding Adjustable Bar/Soap Dish/Matching Single Valve Faucet | S | S | S | S | S |
| Standard Toilet - Porcelain | S | S | S | S | S |
| Macerator Toilet - Porcelain | — | — | S | — | — |
| Power Ceiling Vent | S | S | S | S | S |
| ENTERTAINMENT | 28A | 29M | 32S | 34J | 35R |
| 32" Flat Screen LED TV (Bedroom) | S | S | S | S | S |
| 32" Flat Screen LED TV (Bunk) | — | — | — | S | — |
| 39" Flat Screen LED TV (Living Area) | S | S | S | S | S |
| 50" Flat Screen LED TV (Living Area) | — | — | — | — | S |
| Living Area Ceiling Speakers | S | S | S | S | S |
| Bluetooth® Coach System in Bedroom w/Exterior Speakers | S | S | S | S | S |
| Exterior Entertainment Center w/50" LED TV | S | S | S | S | S |

| ELECTRIC & UTILITIES | 28A | 29M | 32S | 34J | 35R |
|--|-----|-----|-----|-----|-----|
| A/C - Single 15,000 BTU w/Chill Grill | S | S | S | — | — |
| A/C - Dual 13,500 BTU | — | O | O | S | S |
| A/C - Dual 11,000 w/4.0 Generator/EMS | O | — | — | — | — |
| Furnace 30,000 BTU | S | S | S | — | — |
| Furnace 34,000 BTU | — | — | — | S | S |
| 50 AMP Service | S | S | S | S | S |
| 55 AMP Power Converter | S | S | S | S | S |
| Inverter - Single 1000w | S | S | — | — | — |
| Inverter - Single 2000w | — | — | S | S | S |
| WiFiRanger™Sky4 | S | S | S | S | S |
| WiFiRanger™SkyPro Pack | O | O | O | O | O |
| Solar Panel Pre-Wire | S | S | S | S | S |
| Multiplex Wiring Control System w/4.3" Touchscreen Panel | S | S | S | S | S |
| Auxiliary Batteries 6V (2) | S | S | S | S | S |
| Generator - 4.0KW Onan® Quiet | S | S | S | — | — |
| Generator - 5.5KW Onan® Quiet | — | O | O | S | S |
| Auto Gen Start | — | S | S | S | S |
| Master Battery Disconnect Switch | S | S | S | S | S |
| Water Pump - 12V 3GPM High Capacity Shurflo® Water Pump | S | S | — | S | S |
| Water Pump - 12V 5.3GPM High Capacity AquaJet® Water Pump | — | — | S | — | — |
| Water Purification System | S | S | S | S | S |
| Water Heater Bypass System | S | S | S | S | S |
| City Water Hookup | S | S | S | S | S |
| Exterior Shower | S | S | S | S | S |
| Cable TV/Satellite Hookup | S | S | S | S | S |
| Black Holding Tank Flush System - San-T-Flush | S | S | S | S | S |
| Single Location Monitor Panel w/LPG, Touch Sensor Tank Monitoring/Battery Readouts | S | S | — | — | — |
| CO/Smoke Detectors/Fire Extinguisher | S | S | S | S | S |
| GFCI Receptacle in Exterior Storage | S | S | S | S | S |
| Washer/Dryer Prep - Combo | — | — | — | — | S |
| Washer/Dryer - Combo | — | — | — | — | O |
| Washer/Dryer - Stackable | — | — | — | — | O |



EXTERIOR ENTERTAINMENT CENTER



Exterior Entertainment Center with 50" LED TV. Standard on all floorplans

EXTERIOR KITCHEN



Exterior Kitchen includes sink, microwave, mini refrigerator, additional slide-out prep counterspace, electrical outlets and tons of storage. Available on floorplans 29M, 34J

Product information, photography and illustrations included in this publication were as accurate as possible at the time of printing.

**CSA standards may require substitution or deletion to achieve conformance

DIMENSIONS & CAPACITIES

| MODEL | 28A | 29M | 32S | 34J | 35R |
|---|--------|--------|--------|--------|--------|
| Overall Length (inches) ^a | 29' 3" | 31' 0" | 33' 6" | 36' 0" | 36' 0" |
| Overall Height (inches with A/C) ^{5,6} | 12' 4" | 12' 4" | 12' 4" | 12' 4" | 12' 4" |
| Overall Width (inches maximum) ^{5,6} | 100" | 100" | 100" | 100" | 100" |
| Interior Height (inches maximum) | 82" | 82" | 82" | 82" | 82" |
| Interior Width (inches maximum) | 96" | 96" | 96" | 96" | 96" |
| Patio Awning Width (feet & inches) | 20' 0" | 20' 0" | 14' 0" | 22' 0" | 18' 0" |
| Interior Storage (cu. ft.) | 81" | 92" | 97" | 110" | 130" |
| Exterior Storage (cu. ft.) | 70" | 45" | 83" | 82" | 160" |
| Fresh Water Holding Tank (gal) | 50 | 50 | 50 | 50 | 50 |
| Grey Water Holding Tank (gal) | 37 | 37 | 74 | 37 | 37 |
| Black Water Holding Tank (gal) | 37 | 37 | 37 | 37 | 37 |
| Appliance Propane Tank (gal) (WC) | 14 | 14 | 14 | 14 | 14 |
| Water Heater Tank (gal) | 6 | 6 | 10 | 6 | 6 |

CHASSIS

| MODEL | 28A | 29M | 32S | 34J | 35R |
|-------------------------------|--------|--------|--------|--------|--------|
| Wheelbase (inches) | 190" | 190" | 208" | 228" | 228" |
| GVWR (lbs) ¹ | 16,000 | 18,000 | 22,000 | 22,000 | 22,000 |
| Front GAWR (lbs) ² | 6,500 | 7,000 | 8,000 | 8,000 | 8,000 |
| Rear GAWR (lbs) ² | 11,000 | 12,000 | 15,000 | 15,000 | 15,000 |
| GCWR (lbs) ³ | 21,000 | 23,000 | 26,000 | 26,000 | 26,000 |
| Hitch Rating Weight (lbs) | 8,000 | 8,000 | 8,000 | 8,000 | 8,000 |
| Tongue Weight (lbs) | 800 | 800 | 800 | 800 | 800 |
| Fuel Capacity (gal) | 80 | 80 | 80 | 80 | 80 |

FORD® CHASSIS

Model: Ford®
 Engine: 6.8L Triton V10
 Transmission: Ford® 6-Speed, Automatic w/Overdrive
 Alternator: 175 AMP
 Torque: 460 lb.-ft. @ 3,000 RPM
 Horsepower: 320 HP @ 3,900 RPM



EXTERIOR CHOICES



SUNRISE



HORIZON



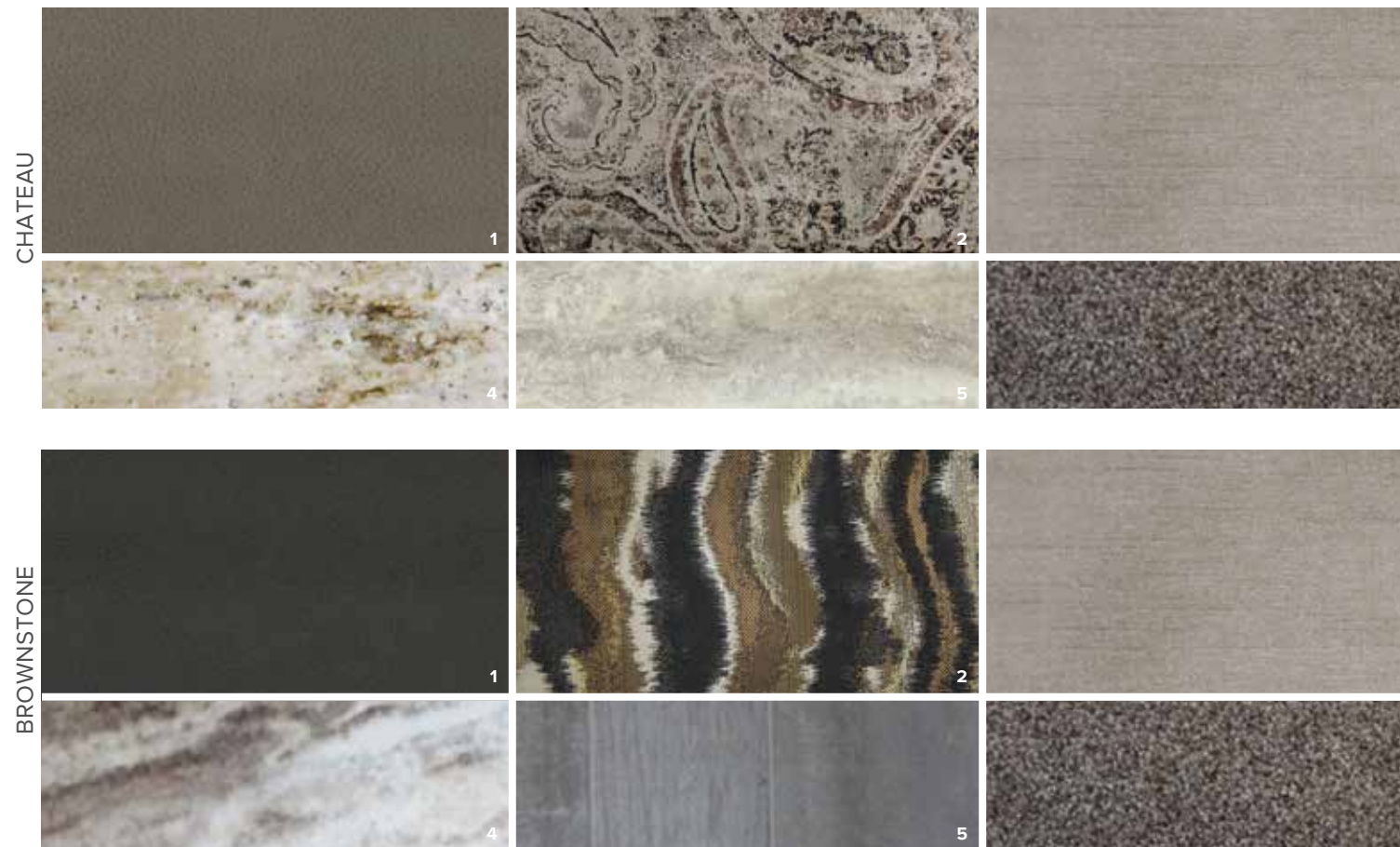
SUNRISE — PARTIAL PAINT



HORIZON — PARTIAL PAINT

Partial Paint is not available on 28A

DÉCOR



1-SOFA 2-LIVING ACCENT 3-BEDSPREAD 4-COUNTERTOP 5-FLOORING 6-CARPET

CABINETRY



INTERIOR DESIGNER CHOICES:

Holiday Rambler exclusive interior designer recommends:

Chateau Décor pairs well with all cabinetry, Amber, Nutmeg or Whispering Wind glazes

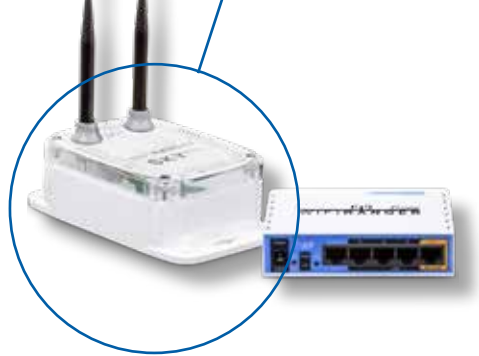
Brownstone Décor pairs well with Nutmeg cabinetry

Visit our website for more photos and to build your 2020 Admiral at holidayrambler.com.

ADMIRAL TOP FEATURES



RENEWABLE SAFE POWER
Each Admiral is pre-wired for a solar panel which allows the adding of an after market solar panel.



WiFi RANGER™ SKY4 DC (STANDARD)
Boost a weak signal to get online in no time with this private secure WiFi booster.

WiFi RANGER™ SKY4 PROPACK w/LTE (UPGRADE)
Upgrade to this cellular internet modem that includes a cell booster and GPS upgrade.



BONDED WINDSHIELD
Feel safer with this automotive style curved bonded windshield. This automotive inspired design bonds the windshield along the entire perimeter of the glass. This increases the structural strength and also reduces the risk of stress cracks.



TUFF PLY ENGINEERED VINYL ROOF
Protect yourself from the elements with this state-of-the-art one-piece roof. Constructed out of "Tuff-Ply" or Thermoplastic Poly Olefin is as tough as it comes and is very low maintenance.



BILSTEIN® STEERING STABILIZER SYSTEM (STANDARD)
Every Admiral is standard equipped with this shock absorber system that dampens the bumps and vibrations of the road in the steering system. Bilstein allows for easier control to the front-end steering.



DESIGNER KITCHEN ELEMENTS

Meal prep with ease and in style with solid surface countertops with glass range cover provides additional countertop work space and a residential refrigerator. New style Dometic three-burner range is standard. Upgrade to a Dometic 8cf double door refrigerator for longer trips. Bonus under cabinet LED lighting added giving the comforts of home.



WASHER/DRYER OPTIONS (UPGRADE)

All the amenities of home-sweet-home with washer and dryer options available on the 35R floorplan. Choose from an all-in one combo unit or a stackable unit conveniently tucked away in the master bedroom.



AUTO GENERATOR START

Batteries need charging? A/C needs to kick on? This feature will automatically turn on your generator to give them some juice and then turn off when they have enough charge.



AUTO HYDRAULIC LEVELING SYSTEM (STANDARD)

Save time and avoid hassle by leveling and stabilizing your RV with the push of a button.



KING EURO TOP MATTRESS

Sleep like royalty in this spacious 74" x 74" luxurious residential style bed with a king euro top mattress.



HIDE-A-LOFT™ DROP DOWN QUEEN BED (STANDARD)

Standard in every Admiral is a Hide-A-Loft drop down queen sized bed including mattress. The additional sleep quarters has 600lb capacity and industry leading headroom.

DISCLAIMER

1. GVWR (Gross Vehicle Weight Rating) is the maximum permissible weight of this fully loaded motorhome. The GVWR is equal to or greater than the sum of the (UVW) unloaded vehicle weight plus the (OCCC) occupant cargo-carrying capacity*.
 2. GAWR (Gross Axle Weight Rating) is the maximum permissible loaded weight a specific axle is designed to carry.
 3. GCWR (Gross Combined Weight Rating) is the value specified by the motorhome manufacturer as the maximum allowable loaded weight of this motorhome with its towed vehicle. Towing and braking capacities may be different. Refer to Holiday Rambler and chassis manufacturer's manuals for complete information.
 4. Length measured from front bumper to rear bumper (excludes accessories).
 5. Excludes safety equipment and awnings.
 6. Motorhomes feature a body width over 96" which will restrict your access to certain roads. Before purchasing, you should research any state and/or province road laws which may affect your usage.
 7. Tank manufacturer's listed water capacity (WC). Actual propane capacity is 80% of water listing as required by the safety code.
- * The chassis manufacturer recommends the installation of a supplemental brake control system to activate the brakes on the vehicle or trailer you are towing. Hitch receiver ratings expressed are maximum for the hitch receiver installed and may require the purchase of additional equipment that is dependent on the weight of the towed load. Consult with hitch receiver manufacturer for further information.
- * UVW and OCCC are found on the label containing the federal certification tag in each RV.
- ** The Minimum Towable Load of this vehicle is the available weight capacity, up to GCWR, when the coach is fully loaded to maximum GVWR. However, if the coach is loaded to something less than maximum GVWR, that extra available weight capacity can be added to your Towable Load. For example, if your coach is loaded to 1000lbs less than maximum GVWR, your Towable Load increases accordingly. Do not exceed the hitch rating weight, GVWR or GCWR.
- ** Seatbelts and locations are shown in the brochure for display purposes only. Actual numbers and locations will vary by model.
- *** All 2020 REV Recreation Group motorhomes include a limited one-year/15,000-mile coach warranty and three-year/45,000-mile structural warranty, whichever occurs first, and is fully transferable for the first 12 months.



OUR VERY OWN HOLIDAY RAMBLER MOTORHOME SERVICE CENTERS

At Holiday Rambler, we strive to deliver peace-of-mind at every turn. Our devotion to customer service starts with our trusted dealer network and spans to our own staff of motorhome service professionals at REV Recreation Group's regional technical centers. The motorhome service centers are strategically located throughout the United States to provide you convenient service wherever the road takes you.

Below, you'll find the closest motorhome service center, as well as a list of the other centers. Please visit www.holidayrambler.com/motorhome-service-centers to schedule a Service Appointment.

East Coast REV Technical Center
800-509-3417

West Coast REV Technical Center
877-466-6226

RV OWNERCARE

Limited one-year/15,000-mile coach warranty and three-year/45,000-mile structural warranty, whichever occurs first, and it is fully transferable for the first 12 months. RV OWNERCARE is one of the RV industry's most comprehensive programs and includes systems, appliances, components and construction, with no deductible and no service charge.

Chassis Warranty provided by Ford®

YOUR LOCAL DEALER

Colton RV & Marine
3122 Niagara Falls Blvd
North Tonawanda, NY 14120
(716) 694-0188
www.ColtonRV.com

Colton RV & Marine
3443 Southwestern Blvd.
Orchard Park, NY 14127
(716) 957-3250
www.Coltonrv.com



Holiday Rambler is part of REV Recreation Group, a division of REV Group, Inc., a family of 29 industry-leading motor vehicle brands. At REV Group, we innovate, design and build products that connect and protect thousands of people every day—our trusted vehicles are engineered with the utmost rigor and precision to deliver the highest levels of performance, reliability, durability and safety.

holidayrambler.com
revgroup.com

CONTACT US

To locate a dealer near you, visit our website at www.holidayrambler.com or call 1-877-252-4666. We can also be contacted at Holiday Rambler Customer Relations, P.O. Box 1007, Decatur, IN 46733.

IMPORTANT—PLEASE READ: Product information, photography and illustrations included in this publication were as accurate as possible at the time of printing. For further product information and changes, please visit our website at www.holidayrambler.com or contact your local Holiday Rambler dealer. Prices, materials, design and specifications are subject to change without notice. All weights, fuel, liquid capacities and dimensions are approximate. Holiday Rambler has designed its recreational vehicles to provide a variety of uses for customers. Each vehicle features optimal seating, sleeping, storage and fluid capacities. The user is responsible for selecting the proper combination of loads (i.e., occupants, equipment, fluids, cargo, etc.) to ensure that the vehicle's capacities are not exceeded.