

**STARCRAFT**

**LAUNCH  
OUTFITTER**



# ROAD TRIP.



**CAMPING** | *pure and simple.*

## CHASE ADVENTURE. CHERISH THE JOURNEY.

We are seekers and boundary pushers, and this is our time. Time to chart our own course. To leave with nothing but our gear and a free spirit, and to discover everything along the way. Starcraft RV has been satisfying adventure seekers for over 50 years. Our heritage is deeply rooted in family values, exceptional craftsmanship and leading edge innovation. Like you, we look forward to seeing where our next journey takes us.

**Create your next experience of a lifetime in a Starcraft RV.**



QUALITY YOU CAN  
COUNT ON SINCE 1903.



Go the distance with our **3-Year Limited Structural Warranty** plus a 1-Year Limited Manufacturer's Warranty—freedom from worry is your best travel companion.



Shield your investment with our **Magnum Roof System™**. Testing revealed our advanced design to be 50 percent stronger than the competition.



Enjoy longer life with **TuffShell™**.

Tackle the toughest conditions head on with our exclusive TuffShell vacuum-bonded laminate, reinforced with heavy-duty fiberglass and welded aluminum frames.



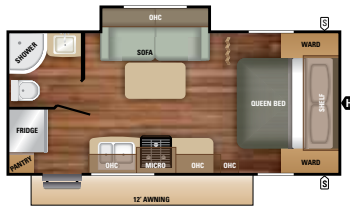
Protect the environment with **Starcraft EcoAdvantage™**. Obtain peace of mind with our longstanding commitment to protecting the environment.

SPECIFICATIONS	21FBS	24BHS	24ODK	24RLS	27BHU	187TB	207RB	239TBS
Unloaded Vehicle Weight (lbs.)	4,070	5,415	5,455	5,270	6,050	3,830	3,965	5,140
Dry Hitch Weight (lbs.)	337	681	645	585	519	413	398	641
Exterior Length	23' 6"	29' 1"	29' 1"	29' 4"	33' 3"	21' 3"	22' 9"	26' 12"
Exterior Width	96"	96"	96"	96"	96"	96"	96"	96"
Exterior Height with A/C	122"	129"	129"	127"	129"	122"	122"	127"
Interior Height	78"	78"	78"	78"	78"	78"	78"	78"
Fresh Water Capacity (gals.)*	28	48	48	48	48	28	28	28
Gray Wastewater Capacity (gals.)	30	30	30	30	61	30	30	30
Black Wastewater Capacity (gals.)	30	30	30	30	30	30	30	30
Sleeping Capacity	3-4	8-10	3-4	4-6	8-10	7-8	4-5	8-10

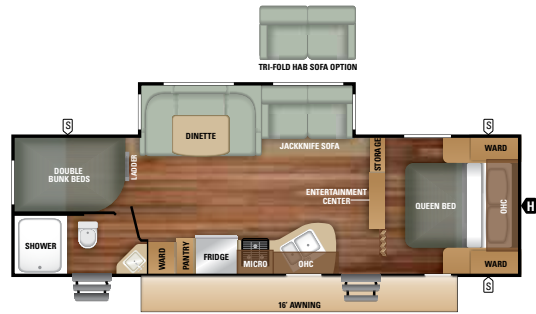
\*Includes water heater

LEARN MORE ABOUT OUR  
STANDARD FEATURES AND  
FULL OPTIONS PACKAGES AT  
[starcraftcamping.com](http://starcraftcamping.com)

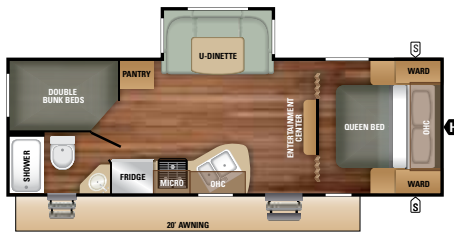
21FBS



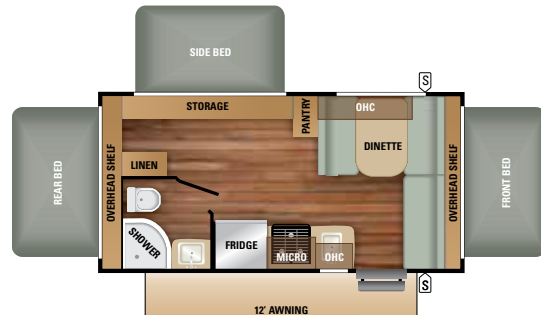
27BHU



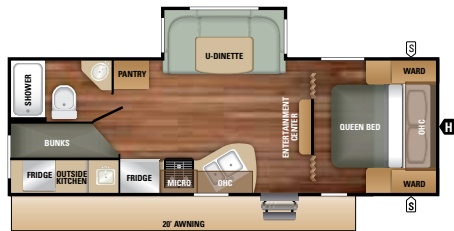
24BHS



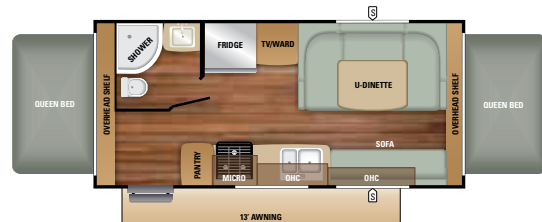
187TB



24ODK



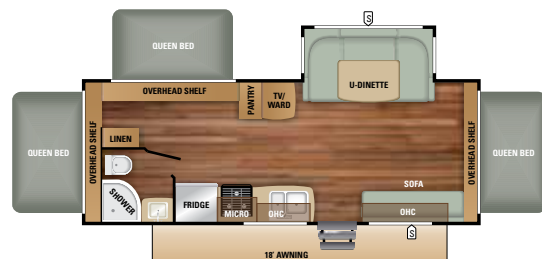
207RB



24RLS



239TBS



TRI-FOLD HAB SOFA OPTION

## KITCHEN AMENITIES

- Rich Barrington Espresso hardwood cabinetry
- Residential high-rise faucet
- 6 cu. ft. refrigerator
- 2-burner stove with oven
- Microwave

## COMFORT & ENTERTAINMENT

- 600 lb. rated double bunks
- Bedspread
- Valances with pleated shades
- 12v CD/DVD stereo with USB input
- Powered bathroom ventilation
- Foot flush toilet
- 13,500 BTU air conditioner standard; 15,000 BTU air conditioner option
- Omni-directional digital TV/AM/FM antenna with powered amplifier

## EXTERIOR FEATURES

- Structural steel I-beam frame
- Walkable crowned truss roof rafters with 3/8" decking
- Spare tire with carrier
- 20 lb. LP bottles
- Solar prep
- Heat-enclosed underbelly
- Outside shower



CAMPING | *pure and simple.*

**THE STARCRAFT  
COMPETITIVE ADVANTAGE:**

YOUR COMFORT AND  
CONVENIENCE COME FIRST.

- Generous 6-gallon gas DSI water heater
- Install-ready cable and satellite prep
- Sturdy screwed lumber core cabinet stiles
- Sleek easy-clean shower surround
- EZ-Store detachable cord
- Galvanized steel wheel wells
- Convenient one-touch electric awning with LED lighting



**NOTES**

---



---



---



---



---



---



---

**LOCAL DEALER INFO**

Colton RV & Marine  
 3122 Niagara Falls Blvd  
 North Tonawanda, NY 14120  
 (716) 694-0188  
[www.ColtonRV.com](http://www.ColtonRV.com)

Colton RV & Marine  
 3443 Southwestern Blvd.  
 Orchard Park, NY 14127  
 (716) 957-3250  
[www.Coltonrv.com](http://www.Coltonrv.com)

**STARCRAFT**

536 Michigan Street | Topeka, IN 46571 USA | (800) 945-4787 | [starcraftcamping.com](http://starcraftcamping.com)

Unloaded Vehicle Weight (UVW): Sometimes referred to as "Dry Weight," UVW means the typical weight of this trailer as built at the factory. The UVW, as used in product literature and other promotional materials, does not include cargo, fresh water, propane, options or dealer-installed accessories. Hitch Weight (HW): The hitch weight, as used in product literature and other promotional materials, does not include cargo, fresh water, propane gas, options or dealer-installed accessories. The addition of these types of items will either add to or subtract from the stated hitch weight. It is important for your safety and enjoyment that your tow vehicle be adequately sized and equipped to tow and handle the GVWR of the RV you select. Review weights and rating of your tow vehicle and consult a competent advisor for questions or advice. Whether you are new to RVing or a veteran, get a feel for the performance of your tow vehicle before heading out on the roadways. When you tow an RV, you must drive differently than when you drive a single vehicle. Practice hooking up, driving, backing up and braking in a safe environment or seek out professional instruction. Starcraft affixes a weight label to each RV which lists weight information for that vehicle. See specifications chart on the respective pages of this brochure.

Starcraft RV | 536 Michigan Street | Topeka, IN 46571 See dealer for further information and prices. All information in this brochure and on [www.StarcraftCamping.com](http://www.StarcraftCamping.com) is the latest available at the time of publication approval. Starcraft RV reserves the right to make changes and to discontinue models without notice or obligation. Photography may show optional equipment or props used for decoration purposes only. RVs built for sale in Canada may differ to conform to Canadian codes. Starcraft and the S are registered trademarks of Jayco, Inc. Printed in U.S.A. 86,000 09/2017