

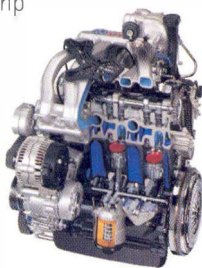
[1999 Rialta®]

B Y W I N N E B A G O I N D U S T R I E S



We put more into it, so you get more out of it.

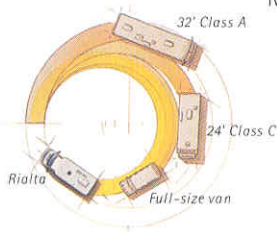
The new Rialta from Winnebago Industries comes packed with more amenities and conveniences than ever to make any getaway more enjoyable. And its compact size makes it so easy to load up and get on the road, you'll be tempted to get away a lot more often. Once on the road you'll appreciate the kind of engineering that makes the Rialta an investment that will take you down the road for years to come. For starters, unlike Class B conversion vans, the Rialta isn't adapted from another vehicle. It's engineered from the ground up. So starting with an all-new VW chassis and a stout but fuel-efficient 140 hp Volkswagen-engineered VR6 engine, Rialta is constructed with the same strict standards as larger Winnebago Industries motor homes. Which means every one of your adventures, while possibly spur of the moment, will always be full of comfort.



*The 1999 Rialta is
equipped with a 2.8
liter VR6 engine.*



More fun to drive. More ways to escape.



Rialta has a tighter turning radius than a Class A or Class C motor home, or even a full-size van.

Measuring in at a little less than

22 feet, the Rialta is surprisingly easy and fun to drive.

In fact, it has a turning radius that more closely resembles

that of a car than a motor home.

This makes things like parallel

parking and negotiating a drive-

thru easy for the novice, and downright exhilarating for

a veteran. The Rialta's handling is a pleasant surprise

as well. Front-wheel drive, four-wheel disc brakes,

fully independent strut suspension and a four-speed

automatic transmission make it easy to maneuver. In

fact, it's so easy to drive, you'll be just as likely to take it

across town as across the country. And while it's true

the Rialta is exceedingly maneuverable and simple to

own and operate, don't let its size fool you. The Rialta

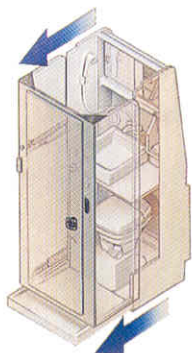
is loaded with the same kind of creature comforts and

conveniences found in motor homes nearly twice its

size. So no matter where the spirit moves you, the

Rialta will make sure you get there in style.

More intelligent use of space.



The walls of the bath slide out to give you more room to clean up and use the available shower. When the walls slide in, there's more space to walk around in the coach.

Perhaps the greatest asset of the Rialta is its uncanny use of space. Every available inch has been utilized in a way that could only come from Winnebago Industries engineering. Take the bathroom, for example. It's constructed with telescoping walls. When extended, there's room for a toilet, folding sink, medicine cabinet with mirrored sliding doors, two built-in towel bars and, amazingly enough, an available shower package. And since no bathroom would be complete without a powered overhead fan, there's one of those too. In the rear dinette models, you'll even find a large, lighted wardrobe cleverly positioned just rear of the bath. Why go to all this trouble fitting so many comforts into the Rialta? Because at Winnebago Industries, we want everyone to experience the full motor home experience, no matter what size coach you prefer to drive.



[Hidden advantages]

The Rialta is full of surprises, including a convenient storage area that's accessible through the rear cap. Inside the compartment you'll even find a power cord for quick hookups.



Cuisine on the go. The galley is packed with features including a microwave, sink and available oven. A high-output three-burner range top gives you more cooking flexibility while a range top cover makes efficient use of space.



Dinner is served. At the rear of the roomy dinette area there is a wide, flat counter top with convenient cupholders and hideaway storage for the dinette. An overhead bedding shelf above the counter top gives you plenty of room to store blankets and other bedding.



Very cool. This new floorplan includes a 35 percent larger refrigerator/freezer with drawers below and a counter on top for a TV.



Full comfort ahead. Hinged armrests and multi-adjustable recliner mechanisms combined with adjustable lumbar support in the driver's seat ensure comfort for long and short excursions.



Cozy nights. Sleep the night away on the full-length bed created by the converted dinette. Side windows open to a cool evening breeze while the rear counter top becomes a convenient nightstand.

[Model 22FD standard]



Store it. This floorplan features side cabinetry, a wardrobe and a double bed. The overhead shelf is perfect for storing linens, while a pullout TV shelf accommodates a 13" TV.



Sleep on it. The underbed storage area is roomy enough to hold sports equipment and other bulky items.



Pack it in. You'll wonder how Class B van owners live without Rialta's generous storage space. The rear sleeping area includes a vanity with TV shelf, ample wardrobe and more cabinetry for storing all kinds of provisions.



Sky's the limit. A skylight helps illuminate the efficient galley, which includes a single-door Norcold refrigerator and microwave.



Hidden convenience. The innovative bathroom contains telescoping walls and a mirrored medicine cabinet with sliding doors. And unlike conversion vans, the Rialta is roomy enough to include a sink, lavatory and available shower.

[Model 22FD optional]



Twice the comfort. The available twin-bed floorplan has two shirt closets, a nightstand and additional storage space under the right bed. There's also a removable pedestal table located in the center aisle.



Bed and breakfast. The well-lit dinette features an available leather upgrade and a new beverage tray and backwall table storage for converting the area into a sleeping space. Overhead you'll find a convenient blanket shelf and an available videocassette player.



Built to suit you. The wardrobe is full-length for any size garment and has a carpeted floor.



Redefining reclining. Three reclining positions on the rear captain's chairs make travel more comfortable. Fold them down to create additional sleeping space.



Quick fix. Preparing food is easy in this model with a two-burner range top and microwave. A flip-up counter extension and drop-in sink cover add valuable work space.



First-class travel. Comfortable driver and passenger seats in the cab offer the convenience of armrest supports. There's also an available 9" color TV with remote.

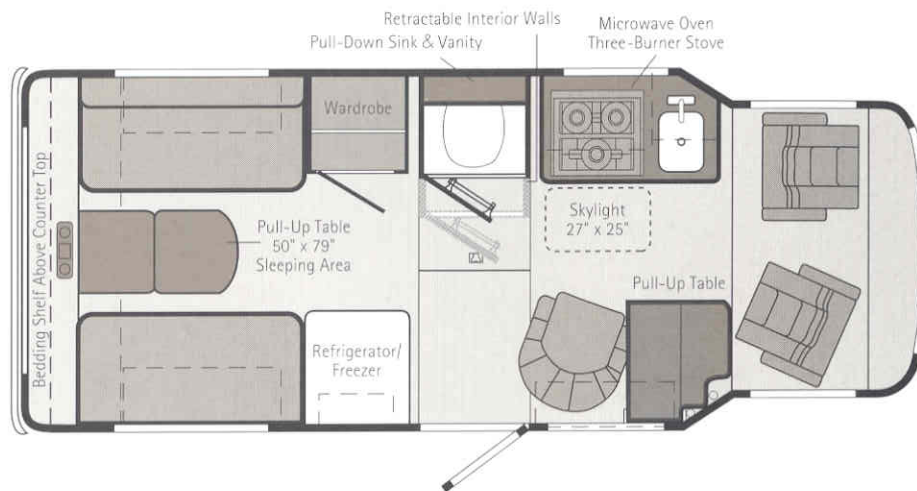
More ways to make
the Rialta uniquely yours.

[New Floorplan]

22HD

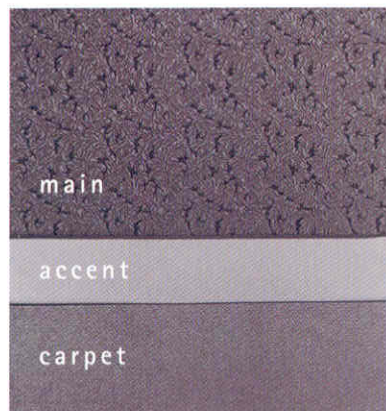
This new floorplan has a larger refrigerator/freezer, increased galley storage space and a three-burner range top.

Length	21'8"	Exterior Width	7'4"
Interior Width	6'10.5"	Interior Height-Max.	6'2"

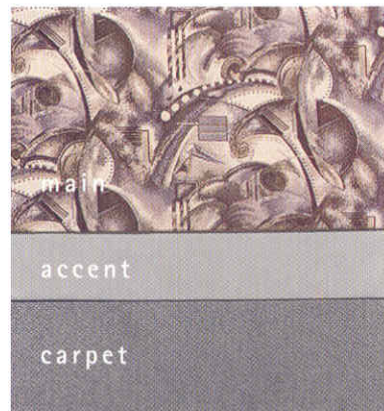


[Interiors]

Slate



Cyber



[Exterior Valances]

Smoke



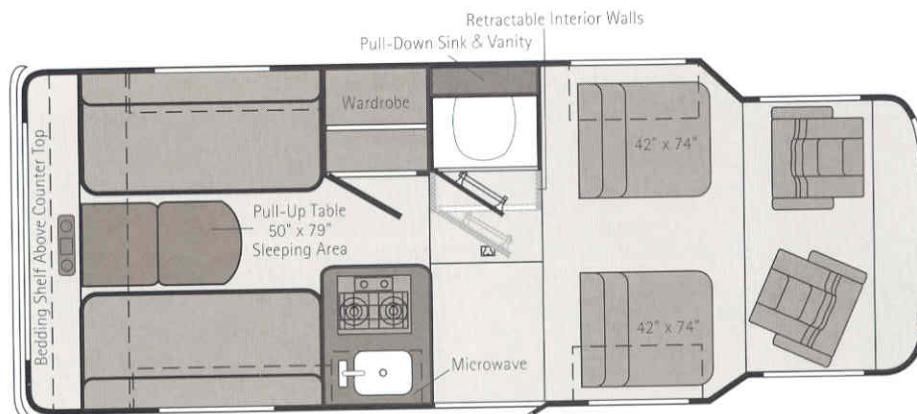
Plum Haze



22QD

This model features four captain's chairs up front and a rear dinette. Both the dinette and the rear captain's chairs convert into generous sleeping spaces.

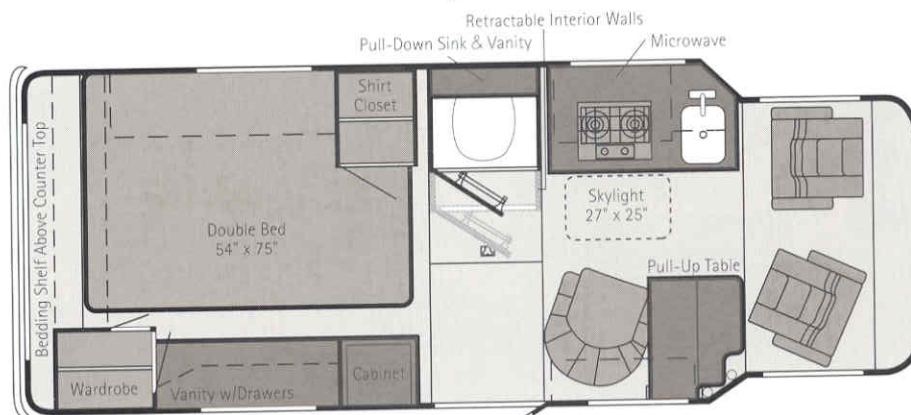
Length	21'8"	Exterior Width	7'4"
Interior Width	6'10.5"	Interior Height-Max.	6'2"



22FD (Standard)

This floorplan includes a large double bed and a rear passenger side vanity and storage compartments. There's also a pull-up table and swivel lounge chair with a skylight overhead.

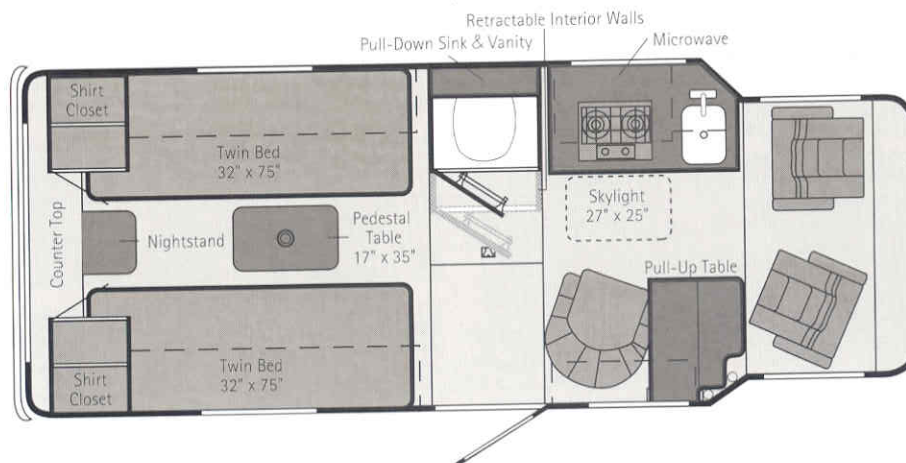
Length	21'8"	Exterior Width	7'4"
Interior Width	6'10.5"	Interior Height-Max.	6'2"



22FD (Optional)

Like the standard unit, this model has wood grain cabinetry. It also has twin beds with storage under the right bed, a pedestal table, a nightstand and shirt closets.

Length	21'8"	Exterior Width	7'4"
Interior Width	6'10.5"	Interior Height-Max.	6'2"



Note: Dashed lines denote overhead areas.

Comes already packed.



The welded tubular aluminum framework is stronger and lighter than the wood used on other vehicles this size.

Our exclusive interlocking joint system connects the roof and walls for a more durable, better-sealed body.



The available exterior wash station with pump switch is perfect for quick cleanups.



The rear storage compartment contains a convenient power cord. And since the spare tire is located under the chassis, the area offers room for bulky items.

The large back window comes with an available wiper/washer and available defogger/defroster to enhance visibility when changing lanes or backing out of driveways.

Every unit is pre-wired for an available roof air conditioner.

We've developed Thermo-Panel® sidewall construction that combines lightweight, structural integrity and durability.



Rialta's aerodynamic styling and even weight distribution help it maintain an impressive 16.34 miles per gallon combined.*

Alarms that detect smoke, LP gas and carbon monoxide are standard equipment.

The low-mounted driver and passenger side mirrors are electronically controlled and heated.

Select appliances are secured with steel tie-downs, an exclusive Winnebago Industries safety feature.

Headlights and turn signals are flush-mounted to reduce drag.

Chassis-supplied daytime running lights are standard.

The 140 hp VR6 engine offers improved fuel economy and quieter operation.

To make sure each unit is watertight, we conduct a water test simulating an intense rainfall.



Low entrance doors and non-slip tread strips on the running boards make getting in and out easier.

Every Rialta comes with a 2-year/24,000-mile warranty on the coach body, chassis and cab and a 5-year/50,000-mile warranty on the power train.

For even greater cooking flexibility, the 22HD galley includes a microwave, sink, three-burner range top, available oven and larger refrigerator/freezer.

There are six radio speakers throughout the cab and coach, and an available CD player.

Recent simulated wind tunnel tests confirmed Rialta has virtually zero drag along the sides of the vehicle, offering exceptional performance and fuel efficiency.



The low entrance step enables you to load gear with ease.

New streamlined valance panels add a luxurious look to a luxurious ride.

The complete rear floor is made of steel for superior strength, and is electrocoated and undercoated to resist corrosion.

Unlike conversion vans, the Rialta comes with a furnace to keep you comfortable on chilly nights.

*Combined average of city and highway using U.S. EPA testing guidelines. Ambient temperature 85°F.

[Specifications]

	220D	22FD	22HD
1998 Rialta			
Length	21'8"	21'8"	21'8"
Exterior Height w/Roof Air*	8'6"	8'7"	8'7"
Exterior Height w/o Roof Air*	7'7"	7'8"	7'8"
Exterior Width	7'4"	7'4"	7'4"
Interior Height – Maximum	6'2"	6'2"	6'2"
Interior Width	6'10.5"	6'10.5"	6'10.5"
Fuel Capacity	21.1 gal.	21.1 gal.	21.1 gal.
Fresh Water Capacity w/Heater	20 gal.	20 gal.	20 gal.
Holding Tank Capacity – Black Water	13 gal.	13 gal.	13 gal.
Holding Tank Capacity – Gray	9 gal.	6 gal.	6 gal.
LP Capacity (W.C.) ^Ø	7 gal.	7 gal.	7 gal.
GVWR	7,275 lbs.	7,275 lbs.	7,275 lbs.
GCWR	9,275 lbs.	9,275 lbs.	9,275 lbs.
Wheelbase	152"	152"	152"

S Standard
O Optional

	220D	22FD	22HD
Automotive			
Chassis – Volkswagen – 2.8 L fuel-injected gas engine, 4-speed electrically controlled automatic transmission, 280-amp. battery/150-amp. alternator	S	S	S
Springs (air) – rear auxiliary	O	O	O
Tires (radial) w/spare	S	S	S
Driver Conveniences			
Time delay interior cab lighting	S	S	S
12-V electrical supply/lighter	S	S	S
Battery charge control – dual, automatic	S	S	S
Beverage tray w/cupholders	S	S	S
Cruise control	S	S	S
Curtain – front wraparound	S	S	S
Defogger/defroster – rear window	O	O	O
Door locks – power	S	S	S
Floor mats – rubber	S	S	S
Automotive heater/air conditioner – in-dash and auxiliary rear automotive heater	S	S	S
Auxiliary ceiling mount fan w/4 outlets	S	S	S
Auxiliary cab ceiling air conditioner w/4 outlets	O	O	O
Hood release – interior, remote control	S	S	S
Exterior mirrors – low mounted, electronically controlled, heated	S	S	S
Start circuit – auxiliary	S	S	S
Steering – power assisted	S	S	S
Sunvisors	S	S	S
Trim panels – driver and passenger doors, includes storage	S	S	S
Windows – cab (power)	S	S	S
Windshield wipers (intermittent)	S	S	S
Wiper/washer – rear window	O	O	O
Front Seating Area			
Seats (cab) – reclining mid-back design, headrests, armrests, lumbar support, swivel/slide pedestals, 3-point retracting seat belts	S	S	S

S Standard
O Optional

	220D	22FD	22HD
Seats (companion) – adjustable reclining back, headrests, converts to a bed (42" x 74"), 3-point retracting seat belts	S		
Leather faced seat upgrade	O	O	O
Lounge chair and cabinet w/fold-up table, magazine rack and cup holders	S	S	
110-V AC outlet, 12-V DC receptacle	S	S	S
Entertainment			
Deluxe sound system – includes 4 deluxe speakers and one sub-woofer (replaces standard speakers)	O	O	O
Stereo w/cassette (cab) – Panasonic AM/FM deck, 6 speakers	S	S	S
Stereo w/CD player (cab) – Panasonic AM/FM, 6 speakers	O	O	O
TV (9" color) w/remote, includes a 12-V receptacle, (requires antenna option)	O		
Video cassette player (requires TV option, uses TV remote)	O		
TV enhancement package – antenna (amplified), 1 DC receptacle, 1 interior jack, coax wiring, cable input	O	O	O
Rear Dining Lounge			
Convertible dinette/bed (50" x 79")	S	S	
Table (fold-out from backwall storage)	S	S	
Interior			
Carpeting w/pad – stain resistant	S	S	S
Ceiling – acoustical fabric headliner	S	S	S
Ceiling lights (single & double)	S	S	S
Ceiling vent – powered, galley/bath	S	S	S
Ceiling vent* – non-powered, rear, not available w/roof air conditioner	S	S	S
Color themes (interior) – choice of Cyber or Slate	S	S	S
Convenience tray – includes cupholders and storage tray	S	S	
Cupholders (companion seats)	S		
Skylight		S	S
Wardrobe – carpeted floor, clothes rod, auto light	S	S	
Windows – tinted w/31% light transmittal	S	S	S
Galley			
Counter extension – flip-up	S		
Microwave oven	S	S	S
Range top – 2 burners, recessed w/cover	S	S	
Range top – 3 burners w/cover		S	
Range top – 3 burners w/cover and oven		O	
Refrigerator – single door w/door storage, 3-way	S	S	
Refrigerator/freezer – single door, 3-way		S	
Refrigerator – single door, high altitude	O	O	
Sink – stainless steel, recessed w/countertop cover	S	S	S
Bedroom			
Bedding shelf*	S	S	S
Double bed – w/fitted bedspread, access to storage below, 2 bed pillows w/shams, 3-drawer vanity, shirt closet, wardrobe, decorator wall lamps, TV shelf	S		
Twin beds – w/access to storage below right bed, fitted bedspreads, 2 bed pillows w/shams, nightstand, 2 shirt closets, removable pedestal table, decorator wall lamps		O	
Bathroom			
Cabinet – expandable	S	S	S
Medicine cabinet – mirrored doors	S	S	S

S Standard
O Optional

	220D	22FD	22HD
Shower package – shower curtain, flexible shower head, shower pan w/power drain	O	O	O
Sink – fold-down	S	S	S
Tissue holder	S	S	S
Toilet – marine style w/ foot pedal	S	S	S
Towel bars (2) on bath door	S	S	S
Vanity shelf – fold-down	S	S	S
Exterior			
Bumpers – molded, steel reinforced	S	S	S
Entrance door locks (2) – latch, deadbolt	S	S	S
Entrance door w/screen door	S	S	S
Exterior wash station w/pump switch	O	O	O
Fuel fill door, flush mount – lockable cap	S	S	S
Mudflaps – front and rear (4)	S	S	S
Lower exterior paint (Smoke or Plum Haze)	S	S	S
Outlet – 110-V, curbside	S	S	S
Storage compartment (rear cap)	S	S	S
Running boards (fiberglass) – w/fender flares	S	S	S
Sewer hose and storage compartment	S	S	S
Tire tools – jack, jack handle, lug wrench	S	S	S
Trailer towing package – w/Class I hitch	O	O	O
Trailer wiring socket	S	S	S
Water fill door – lockable	S	S	S
Wheel covers	S	S	S
Systems			
Air conditioning pre-wiring – roof	S	S	S
Air conditioning* – roof, 7,100 BTU	O	O	O
Battery (auxiliary) – deep cycle	S	S	S
Second battery – deep cycle marine/RV	O	O	O
City water hookup	S	S	S
Electrical control center – 110-V AC/12-V DC, 45-amp. remote electronic converter/charger, AC circuit breakers, DC fuses, 30-amp. power cord	S	S	S
Furnace – electronic ignition, 19,000 BTU	S		S
Furnace – electronic ignition, 17,000 BTU, ducted		S	
Generator prep kit – gas line, 12-V wiring	S	S	S
Generator – 3,000 watt, gas, w/hourmeter	O	O	O
LP tank – permanent mount w/gauge	S	S	S
Monitor panel – water, holding and LP tank levels, battery condition gauge, water pump switch, generator start/stop switch	S	S	S
Water heater – 4 gal., electric w/Motoraid	S	S	S
Water pump (demand)	S	S	S
Safety			
Carbon monoxide detector/alarm	S	S	S
Center mount brake light	S	S	S
Fire extinguisher (10-B.C.)	S	S	S
Ground fault circuit interrupter	S	S	S
Smoke and LP leak detector/alarm	S	S	S
Three-point seat belts on forward facing seats	S	S	S
Driver/passenger side air bags	S	S	S
LP belts in selected areas	S	S	S

^Ø Capacities shown are tank manufacturer's listed water capacity (W.C.). Actual filled LP capacity is 80% of listing due to safety shut-off required on tank. *Not all features available in combinations. See dealer for details. The height of each model is based on the curb weight of a typically equipped unit on the standard chassis. The actual height of your vehicle may vary by as much as 2" depending on chassis or equipment variations. Winnebago Industries' continuing program of product improvement makes specifications, equipment, model availability and prices subject to change without notice.

More protection for
your peace of mind.

[Warranty protection]

The Rialta comes with the most comprehensive warranty in the industry. The coach body of Rialta is covered by Winnebago Industries' 2-year/24,000-mile warranty while Volkswagen of America, Inc. covers the chassis/cab for 2 years/24,000 miles and the power train for 5 years/50,000 miles.

[Premium Roadside Assistance Program]



Our Premium Roadside Assistance Program covers all our '99 motor homes.

Every new Winnebago Industries motor home comes with a one-year membership in our Premium Roadside Assistance Program. This 24-hour nationwide assistance plan covers emergency dispatching for road service and towing,

equipment service questions, service provider recommendations, service appointments and directions to service locations. Other free services include jump starts, tire changing, fuel delivery and lockout assistance.

[Trip Saver Program]



Mechanical emergency while on vacation?

Just go to your nearest Winnebago Industries

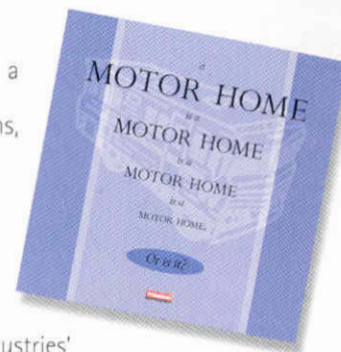
dealer. We guarantee all qualifying, in-stock warranty parts will be air shipped within 24 hours. A part that is not in stock will be expediently manufactured and shipped air freight.



The Rialta features the protection of a driver-side and front passenger-side air bag Supplemental Restraint System (SRS).

Ask for the Winnebago Industries buyer's guide and discover why all motor homes are not created equal.

The process of buying a motor home can be intimidating, even if you're a veteran. And in a market saturated with flashy first impressions, the true signs of quality are often hard to spot. So we've put together a user-friendly guide to help you make some educated



observations as you compare Winnebago Industries' motor homes to the competition. It explains our uniquely superior on-site manufacturing processes, highlights the importance of meeting (and exceeding) industry standards and, best of all, it's free. Use it as a reference tool when shopping around, or familiarize yourself with some key safety and quality considerations. Ask for the guide next time you visit your Winnebago Industries dealer, and upgrade your motor home buying savvy.

Colton RV & Marine
3122 Niagara Falls Blvd
North Tonawanda, NY 14120
(716) 694-0188
www.ColtonRV.com

Colton RV & Marine
3443 Southwestern Blvd.
Orchard Park, NY 14127
(716) 957-3250
www.Coltonrv.com

Rialta

Built proudly by
WINNEBAGO

© 1998 Winnebago Industries, Inc. Forest City, IA 50436. Printed in USA.

Seat belts are your most important hookup. Always buckle up.
Visit us at www.winnebagoind.com