

# Cambria

# WINNEBAGO



Colton RV & Marine  
3122 Niagara Falls Blvd  
North Tonawanda, NY 14120  
(716) 694-0188  
[www.ColtonRV.com](http://www.ColtonRV.com)

Colton RV & Marine  
3443 Southwestern Blvd.  
Orchard Park, NY 14127  
(716) 957-3250  
[www.Coltonrv.com](http://www.Coltonrv.com)

## Why Cambria?

- Ultraleather™ furniture
- Swivel cab seats
- LED lighting
- Available Ideal Rest® Nouveau digital comfort control mattress
- Rear storage trunk with drain plug and folding table
- 4,000-watt Cummins® Onan® MicroQuiet™ gas generator
- Available solar panel/battery charger system
- Available tankless water heater with recirculation pump





On the Cover: 30J Coffee Full-Body Paint

30J Nantucket with Coffee-Glazed Honey Cherry Cabinetry

## Lead the Way

Winnebago® continues to lead the Class C market thanks to a commitment to quality construction and innovative features. The Cambria® embodies this mantra with standard amenities such as swivel cab seats that become part of the lounge and a large exterior storage trunk with a recessed compartment where you can keep drinks on ice. Available upgrades include

dual-pane Contour™ frameless windows that are unrivaled for their quality in the Class C market. Choose from two floorplans, both with walk-around queen beds and robust entertainment centers, that provide all the residential comfort you crave when you're on the road. Lead the way in comfort and class in a Winnebago Cambria.



2016 MotorHome  
READERS' CHOICE  
WINNER  
Class C





30J Nantucket with Coffee-Glazed Honey Cherry Cabinetry

Soft vinyl ceilings, MCD roller shades, new color ways and Ultraleather™ furniture set the tone for a pleasant journey. The 27K offers the choice of the standard BenchMark® dinette or the Flexsteel® Fold N Tumble, while the 30J has room for both. The Rest Easy® powered reclining sofa is also available in each model. Watch movies and more on the HDTV that is connected to the dash DVD player and controlled with a handy remote. For the complete Winnebago fit and finish experience, select the frameless, dual-pane windows that provide a nearly seamless transition from the coach body for superior sealing, reduced wind noise, and a more elegant overall appearance.



MCD Solar/Blackout Roller Shades



Cab Seats with Booster Cushion

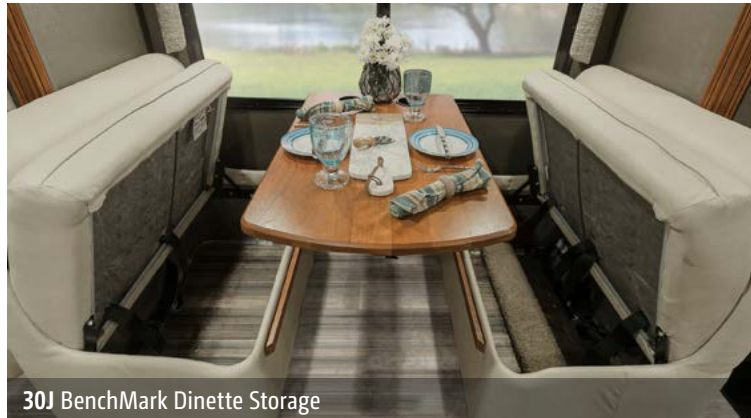




OnePlace® Systems Monitor



30J BenchMark Dinette



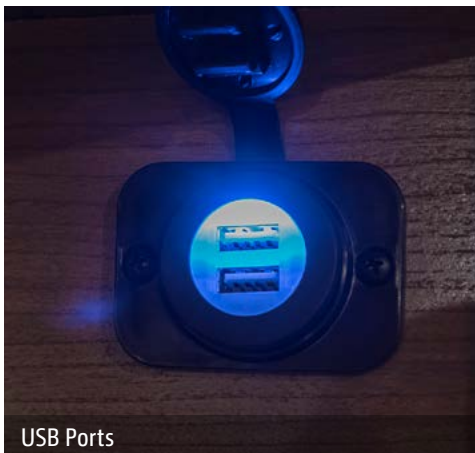
30J BenchMark Dinette Storage



30J Rest Easy Sofa



30J Rest Easy Sofa Extending



USB Ports



30J BenchMark Dinette as Bed



30J Rest Easy Sofa as Bed





30J Galley

With polished Corian® countertops and a beautiful glazed finish on the cabinets, you'll love spending time in the galley preparing meals or simply enjoying your morning coffee. The 3-burner range and the space-saving microwave/convection oven, that cooks and browns like a conventional oven in less time, make every recipe in your cookbook a possibility. A two-door refrigerator/freezer comes standard or you can upgrade to a four-door model (27K) that increases your cold storage space and adds a handy icemaker.



30J Range Cover



30J Corian Sink Covers



30J 3-Burner Range



30J Counter Extension



30J Refrigerator/Freezer



30J Full-Extension Drawer Slides



30J Microwave/Convection Oven



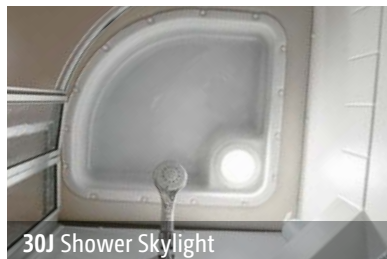


30J Bedroom

The queen bed fits comfortably in a master bedroom that features a large wardrobe with drawers in a perfectly sized slideout. Upgrade to the Ideal Rest Nouveau digital comfort control mattress for dual comfort zones that you can quickly dial in to your preferred firmness level using the remote on each side of the bed. An HDTV comes standard for those who like to catch a show or two before calling it a night.



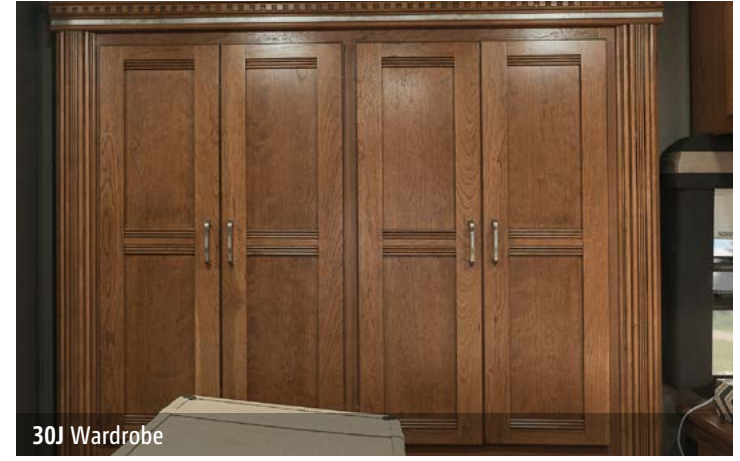
30J Bedroom HDTV



30J Shower Skylight



30J Shower



30J Wardrobe



30J Bathroom





W

Dash

The Cambria puts the joy in travel starting with a standard Radio/Rearview Monitor System. It includes a 6.2" touchscreen, DVD receiver, iPod/MP3 input, Bluetooth® technology and is loaded with apps for SiriusXM®, Spotify®, and AppRadio One™ (subscription not included). Upgrade to the Infotainment Center with Rand McNally GPS for an additional touchscreen monitor, plus turn-by-turn voice guidance powered by one of the most trusted names in navigation. The cab seats provide optimal support for long days on the road and swivel to become part of the lounge when your travel day is done.



Swivel Cab Seats



Powered Mirrors with Defrost and Available Rearview Camera



The inviting powered patio awning with LED lighting means you'll probably be spending a lot of your time outdoors. Why not up the ante by adding the available Exterior Entertainment Center? It comes with stereo speakers, AM/FM radio, CD/DVD player, and inputs for those devices you want to connect. If you want to keep cold beverages on hand, pop open the large rear storage compartment and fill the bin with ice. The compartment includes a folding table and a drain plug making cleanup a snap.



30J Powered Patio Awning with LED Lighting



30J Entrance Door



Exterior Wash Station

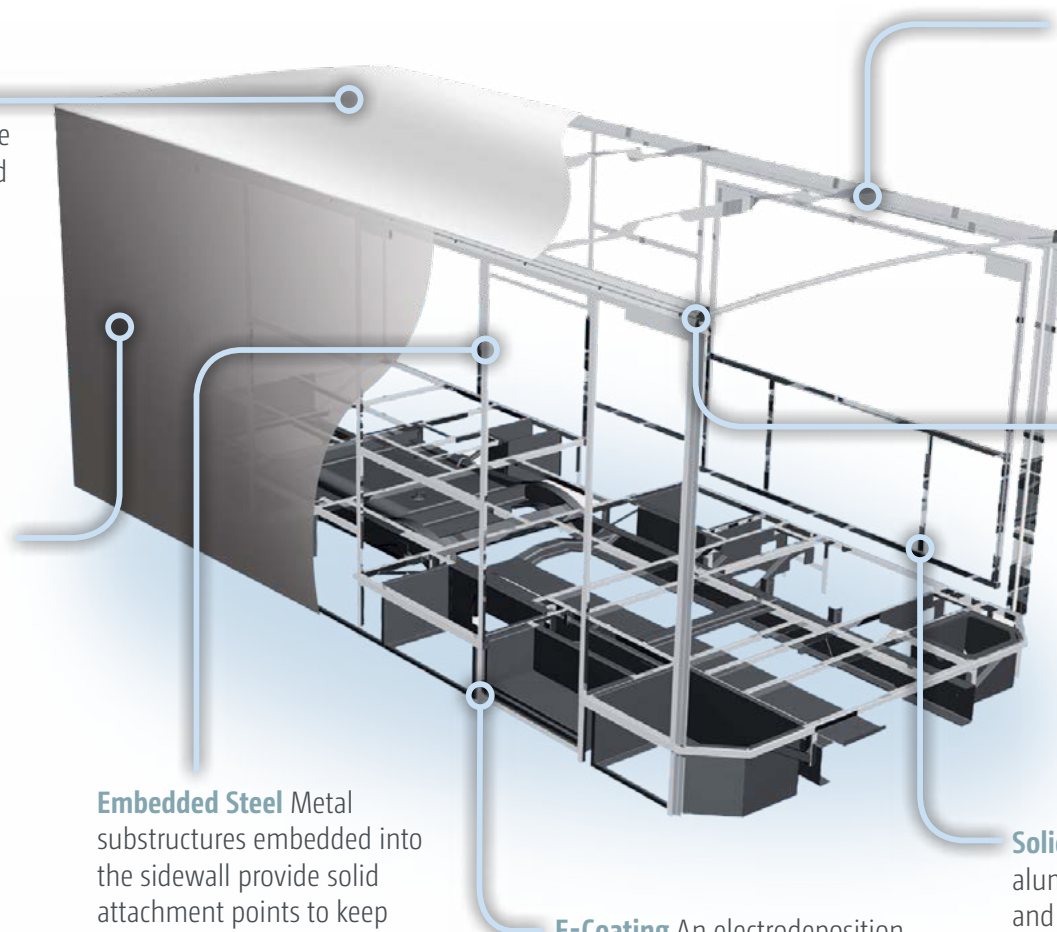


Available ALCOA Stylized Aluminum Wheel



30J Exterior Rear Storage and Table





### Fiberglass Roof

The crowned, one-piece fiberglass roof is backed by a 10-year limited parts-and-labor roof skin warranty.

### Rubber Can't Cut It

Rubber roofs used by competitors can streak and degrade over time.

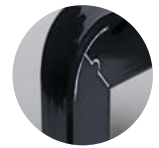
### Thermo-Panel® Sidewalls

By layering fiberglass and high-density block foam insulation with welded aluminum support structures, we create some of the industry's strongest, most durable, and lightweight sidewalls.

**Embedded Steel** Metal substructures embedded into the sidewall provide solid attachment points to keep cabinets and appliances mounted securely in place.

**E-Coating** An electrodeposition coating helps protect critical steel components.

**Laser-Cut Tubing** Precision laser cutters create precise joints in structural steel that are stronger and require less welding.



**Interlocking Joints** Specially engineered interlocking joints connect the floor, sidewalls, and roof where competitors often rely on simple screws to bear the weight.



**Solid Framework** Structural extruded aluminum creates an extremely strong and solid structural framework.

# SUPER STRUCTURE®

BUILT TO LAST

Every coach—from our smallest Class C to our largest diesel-pusher model—is built to Winnebago's® legendary SuperStructure® construction design. It's a process developed and refined over more than 50 years of building some of the strongest, most durable coaches in the industry.

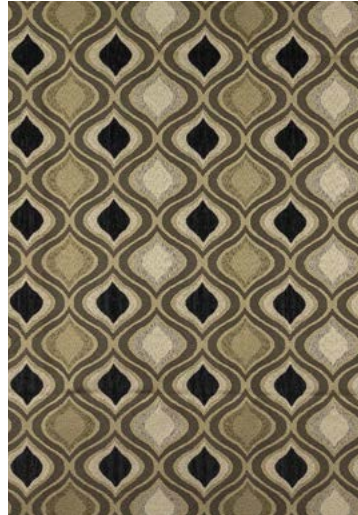


Choose from four collections and three wood finishes.

## Reflection



Ultraleather



Feature Fabric



Bed Cover



Corian Countertop  
(Galley)



Vinyl Flooring



Coffee-Glazed  
Honey Cherry



Coffee-Glazed  
Vienna Maple



Glazed Driftwood

Winnebago® reserves the right to change décor materials and specifications without notice or obligation.



Choose from four collections and three wood finishes.

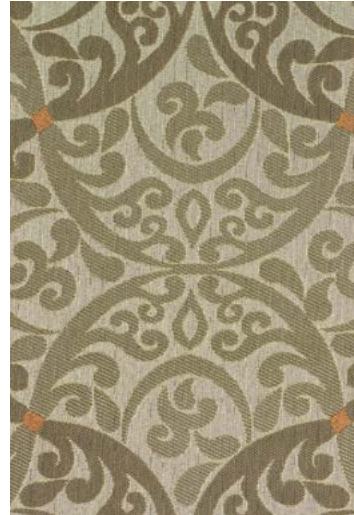
## Autumn Ridge



Ultraleather



Feature Fabric



Bed Cover



Corian Countertop  
(Galley)



Vinyl Flooring



Coffee-Glazed  
Honey Cherry



Coffee-Glazed  
Vienna Maple



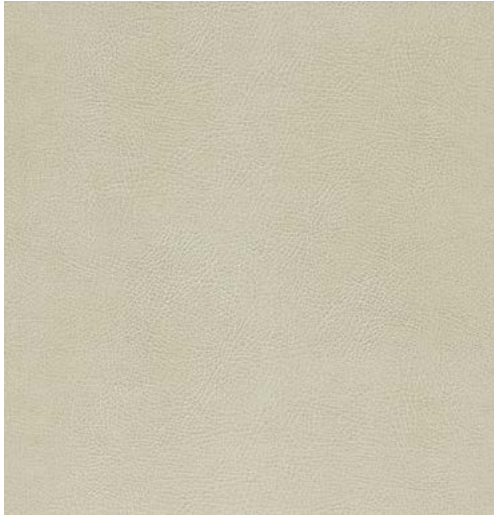
Glazed Driftwood

Winnebago® reserves the right to change décor materials and specifications without notice or obligation.



Choose from four collections and three wood finishes.

## Nantucket



Ultraleather



Feature Fabric



Bed Cover



Corian Countertop  
(Galley)



Vinyl Flooring



Coffee-Glazed  
Honey Cherry



Coffee-Glazed  
Vienna Maple



Glazed Driftwood

Winnebago® reserves the right to change décor materials and specifications without notice or obligation.



Choose from four collections and three wood finishes.

## Serene



Ultraleather



Feature Fabric



Bed Cover



Corian Countertop  
(Galley)



Vinyl Flooring



Coffee-Glazed  
Honey Cherry



Coffee-Glazed  
Vienna Maple



Glazed Driftwood

*Winnebago® reserves the right to change décor materials and specifications without notice or obligation.*



Choose from four stylish full-body paint selections.



**Coffee**  
FULL-BODY PAINT



**Sierra**  
FULL-BODY PAINT



**Smoke**  
FULL-BODY PAINT



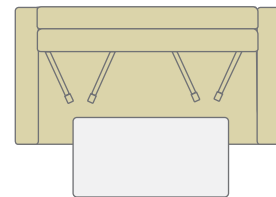
**Tuscan Sun**  
FULL-BODY PAINT



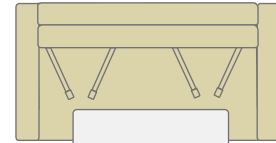
Click here to explore this floorplan's web page.

# 27K

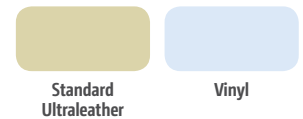
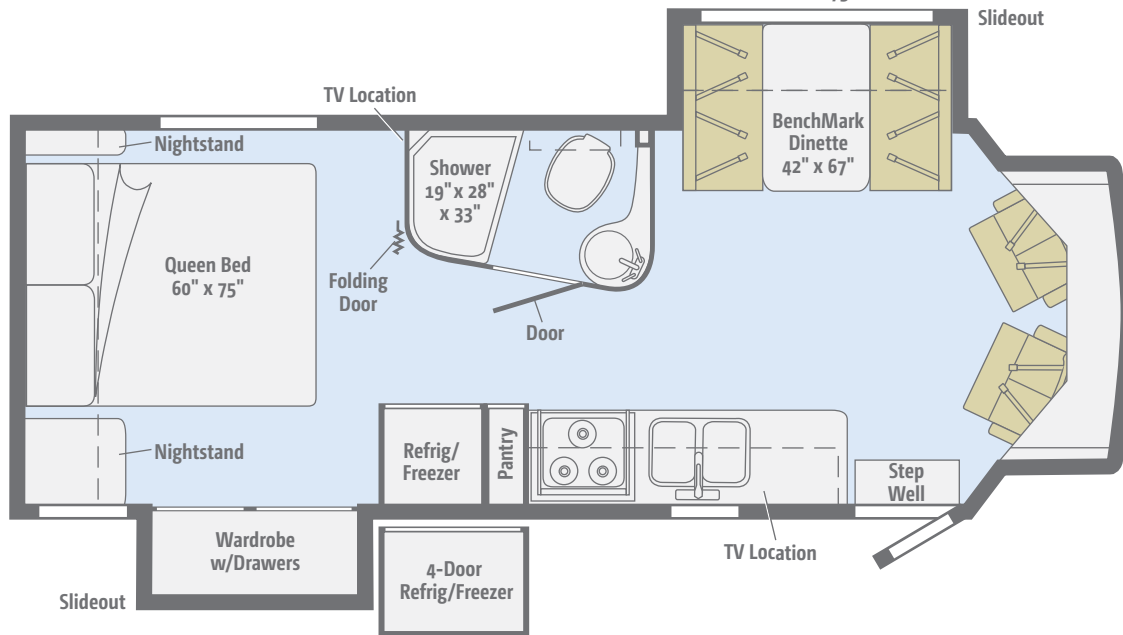
Travel in the comfort and style you desire with your choice of a BenchMark dinette, Rest Easy sofa, or Flexsteel Fold N Tumble, all in rich Ultraleather.



Flexsteel Fold N Tumble w/Table  
60" x 75"



Rest Easy Sofa w/Table  
60" x 75"

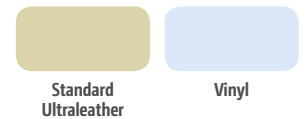
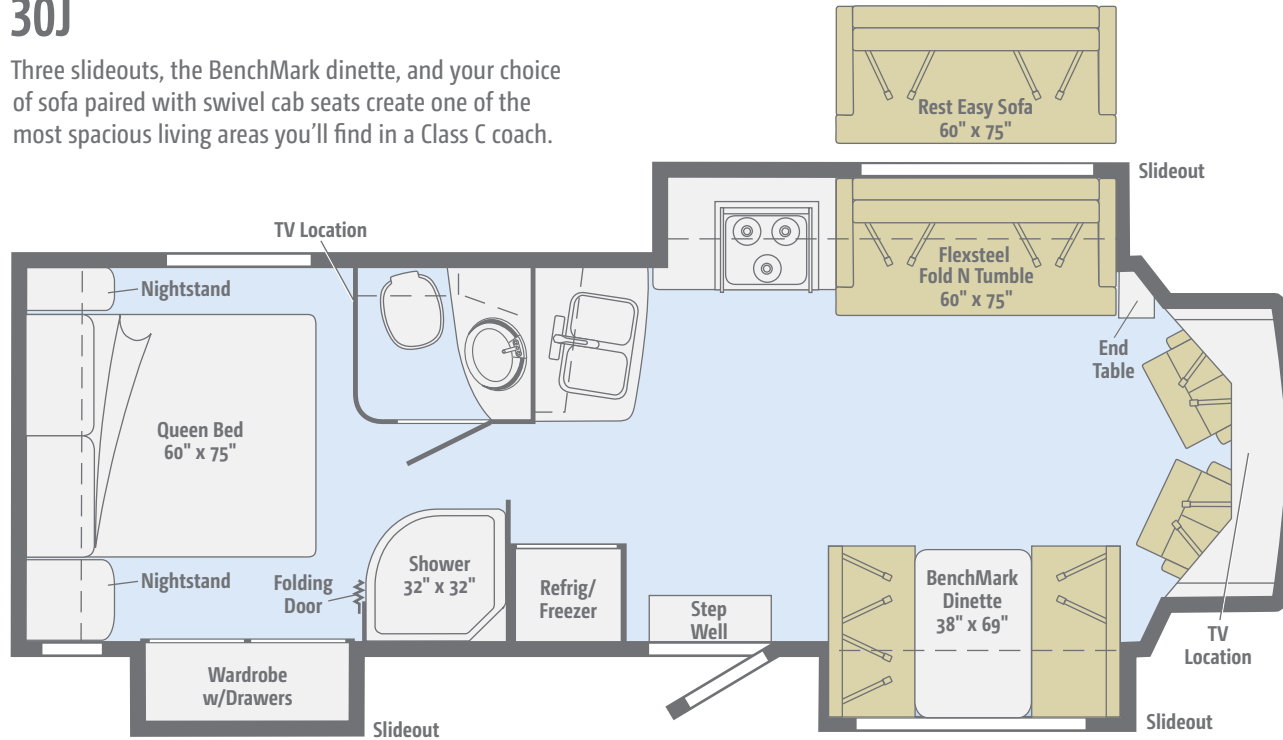




[Click here to explore this floorplan's web page.](#)

### 30J

Three slideouts, the BenchMark dinette, and your choice of sofa paired with swivel cab seats create one of the most spacious living areas you'll find in a Class C coach.





## Weights & Measures

	27K	30J
Length	29'5"	32'4"
Exterior Height <sup>1</sup>	10'4"	10'3"
Exterior Width <sup>2</sup>	7'11"	7'11"
Exterior Storage <sup>3</sup> (cu. ft.)	93	102
Awning Length	19'	15'
Interior Height	6'5"	6'5"
Interior Width	7'8"	7'8"
Freshwater Tank Capacity <sup>4</sup> (gal.)	34	34
Water Heater Capacity (gal.)	6	6
Optional Water Tank Capacity (gal.)	Continuous	Continuous
Holding Tank Capacity - Black/Gray <sup>4</sup> (gal.)	34/31	26/34
LP Capacity <sup>6</sup> (gal.)	18	18
Fuel Capacity (gal.)	55	55
GCWR <sup>8</sup> (lbs.)	22,000	22,000
GVWR (lbs.)	14,500	14,500
GAWR - Front (lbs.)	5,000	5,000
GAWR - Rear (lbs.)	9,600	9,600
Wheelbase	200"	220"
Seating Capacity	6	7

## Ford® E450 Chassis

- 305-hp 6.8L V10 SEFI Triton® engine
- TorqShift™ 6-speed automatic transmission w/overdrive
- 155-amp. alternator
- 4-wheel ABS
- Trailer hitch<sup>6</sup> 5,000-lb. drawbar/350-lb. maximum vertical tongue weight and wiring w/7-pin connector
- Stainless steel wheel liners
- Rear auxiliary air springs

### OPTIONAL EQUIPMENT

- Hydraulic leveling jacks w/automatic controls
- Stylized aluminum wheels

## Cab Conveniences

- Cab seats hinged armrests, fixed lumbar support, and multi-adjustable slide/swivel/recline
- Radio/Rearview Monitor System DVD receiver with 6.2" LCD color touch screen, handheld remote, iPod®/MP3 input, rear color camera, Bluetooth®, SiriusXM® (includes 90-day trial subscription), Spotify®, AppRadio One
- Dual airbags
- 3-point seat belts
- Chassis/house battery radio power switch
- Power assist steering w/tilt wheel
- Cruise control
- 12-volt powerpoints
- Power door locks
- Sunvisors
- Power exterior mirrors w/defrost
- Cab mat (rubber)

### OPTIONAL EQUIPMENT

- Infotainment Center with Rand McNally RV GPS 6" touch screen color monitor w/split screen function, Rand McNally RV GPS safe & easy routing, amenities & tools, trips & content, turn-by-turn voice guidance, AM/FM radio w/CD/DVD player, handheld remote, SiriusXM (includes 90-day trial subscription), iPod® and USB connections, Bluetooth, color rearview camera
- Sideview color camera system (cameras mounted to exterior mirrors)
- SiriusXM® satellite radio prep, receiver, antenna (subscription not included)

## Interior

- Home Theater Sound System receiver, DVD player, amplifier, 5 speakers, subwoofer
- 28" HDTV (27K)
- 40" HDTV (30J)
- USB/multi-outlet charging stations
- LED lights
- Satellite system ready
- Video selection system
- Front wraparound curtain
- MCD blackout roller shades
- Tinted windows
- Soft vinyl ceilings
- Amplified digital HDTV antenna
- OnePlace® systems center
- Powered roof vent (bath)
- Powered ventilator roof vent (bedroom)
- Roof vent (lounge)
- Glass flush mount bi-fold range cover

### OPTIONAL EQUIPMENT

- Skylight w/sliding screen, pleated shade, and vent
- Interior Upgrade Package galley backsplash, cab seat lounge cushions (2), dash and beverage tray appliqué, carpet floor mat in the cab, decorative wall mirror (27K), decorative picture (30J), Corian® sink covers (2), sofa throw pillows (2), MCD solar/blackout roller shades (in select areas)
- Winegard® automatic satellite TV antenna system
- Frameless, dual-pane windows
- Deluxe powered ventilator fan w/rain cover, remote, and thermostat (bedroom)

## Galley

- Polished Corian® countertops
- Flip-up Corian countertop extension (30J)
- 2-door refrigerator/freezer
- Recessed 3-burner range top w/storage below
- Microwave/convection oven w/range fan (touch control)
- Double-bowl stainless sink
- Pantry (NA w/4-door refrigerator option) (27K)
- Glass partition (30J)
- Cold water filtration system

### OPTIONAL EQUIPMENT

- 4-door refrigerator/freezer w/icemaker (27K)

## Bath

- Skylight
- Flexible showerhead
- Curved textured glass shower door (30J)
- Retractable, self-cleaning screen shower door (27K)
- Porcelain toilet w/foot pedal and sprayer
- Water pump switch
- Stainless steel sink
- Towel bar(s) (27K)
- Towel ring(s)
- Tissue holder

## Bedroom

- Queen bed w/foam mattress, headboard, bedspread, pillows, and pillow shams
- 24" HDTV

### OPTIONAL EQUIPMENT

- Queen Ideal Rest® Nouveau™ Digital control mattress w/remotes



## Exterior

**Powered patio awning** w/metal wrap w/LED lighting

**Porch light** w/interior switch

**Stepwell light** w/interior switch

**Premium high-gloss skin**

**Rear mud flaps**

**Large rear storage compartment** w/rotocast base, drain plug, 30" x 72" folding table

**Fiberglass running boards** w/wheel lips

### OPTIONAL EQUIPMENT

**Entertainment Center** AM/FM stereo, CD/DVD player w/remote, audio and video jacks, 2 exterior speakers

## Heating & Cooling System

**15,000 BTU high-efficiency air conditioner** w/heat pump

**30,000 BTU low-profile, ducted furnace**

## Electrical System

**Exterior AC duplex receptacle and TV jack**

**4,000-watt Cummins Onan® MicroQuiet™ gas generator**

**AC/DC load center, 45-amp. converter/charger**

**Power Cord Compartment** 30-amp. power cord, shoreline/generator automatic changeover switch, cable TV input, portable satellite dish hookup

**Coach battery disconnect system**

**Automatic dual-battery charge control**

**Auxiliary start circuit**

**2 deep-cycle, Group 31 Marine/RV batteries**

**1,000-watt DC/AC inverter**

### OPTIONAL EQUIPMENT

**100-watt solar panel/battery charger** w/controller, junction box, and plug for additional portable solar panel

## Plumbing System

**Rear Trunk** w/Service Center pressurized city water hookup w/diverter valve, exterior wash station w/lighted pump switch

**Drainage valve compartment**

**Gravity water tank fill** w/lockable door

**10' sewer hose**

**6-gallon electric ignition, 110-volt/LP water heater** w/Energy Management System

**TrueLevel holding tank monitoring system**

**Winterization Package** water heater bypass valve and siphon tube

**Permanent-mount LP tank** w/gauge

**Heated holding tank compartment**

**On-demand water pump**

**Holding tank flushing system**

**Sewage pump** (macerator) (27K)

### OPTIONAL EQUIPMENT

**Tankless water heater** w/recirculation pump

## Safety

**Child seat tether anchor** (dinette)

**LP, smoke, and carbon monoxide detectors**

**10 BC fire extinguisher**

**Ground fault interrupter**

**High-mount brake lamps**

## Warranty<sup>7</sup>

**12-month/15,000-mile basic limited warranty<sup>8</sup>**

**36-month/36,000-mile limited warranty on structure<sup>8</sup>**

**10-year limited parts-and-labor warranty on roof skin<sup>8</sup>**

### FOOTNOTES

1. The height of each model is measured to the top of the tallest standard feature and is based on the curb weight of a typically equipped unit. The actual height of your vehicle may vary by several inches depending on chassis or equipment variations. Please check with your dealer for further information.
2. Floorplans feature a wide-body design - over 96." In making your purchase decision, you should be aware that some states restrict access on some or all state roads to 96" in body width. Before making your purchase decision, you should confirm the road usage laws in the states of interest to you.
3. The load capacity of your motorhome is designated by weight, not by volume, so you cannot necessarily use all available space when loading your motorhome.
4. Capacities are based on measurements prior to tank installation. Slight capacity variations can result due to installation applications.
5. Capacities shown are tank manufacturer's listed water capacity (W.C.). Actual filled LP capacity is 80% of listing due to overfilling prevention device on tank.
6. Actual towing capacity is dependent on your particular loading and towing circumstances which includes the GVWR, GAWR, and GCWR as well as adequate trailer brakes. Please refer to the Operator's Manual of your vehicle for further towing information.
7. See separate chassis warranty.
8. See your dealer for complete warranty information.

NA Not Available

Not all items available in combination. See dealer for details.

Winnebago's® continuing program of product improvement makes specifications, equipment, model availability, and prices subject to change without notice. Published content reflects the most current product information at time of printing. Please consult your dealer for individual vehicle features and specifications.







Let us host  
your next

# Adventure



[WGOAdventures.com](http://WGOAdventures.com)



**WINNEBAGO**<sup>TM</sup>  
RV INSURANCE



From RV to personal insurance, Winnebago RV Insurance can provide all the coverage and services you need to feel at home on the road.

**For more information:**  
**(800) 642-4892**

Connect with Winnebago (Click one of the following)



Like us



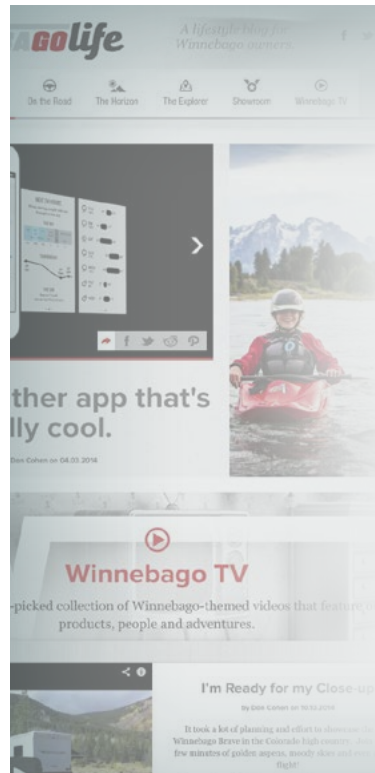
Follow us



Watch us

## WinnebagoInd.com Has All The Answers

Visit [WinnebagoInd.com](http://WinnebagoInd.com) on your computer, smartphone, or tablet for the latest product information and updates.



## Welcome to GoLife!

Visit our lifestyle blog for motorhome news, personal travelogues, and community stories.

**[WinnebagoLife.com](http://WinnebagoLife.com)**

**GoLife**



# **PREFERRED CARE PROGRAM**

We back our motorhomes with best-in-class support both before and after the sale:

- 12-month/15,000-mile basic limited warranty
- 36-month/36,000-mile limited warranty on structure
- 10-year limited parts-and-labor warranty on fiberglass roof
- Complimentary 24-hour roadside assistance program
- TripSaver® Fast Track Parts guarantees that in-stock warranty parts ship directly to your dealer within 24 hours
- National dealer service network



For more information:  
[WGOService.com](http://WGOService.com)



## **WIT CLUB**

### Join the Club, Join the Fun

Here's the perfect way to begin your life on the road as the owner of a new Winnebago – by joining the exclusive WIT Club. Start your adventure with other fun-loving WIT Club members from across the country and get the most out of your new Winnebago motorhome.



#### Members enjoy:

- Caravans and rallies
- Newsletters
- Local and state group activities
- RV travel benefits

See more at  
[WITClub.com](http://WITClub.com)



### Grand National Rally

Each year, thousands of Winnebago owners descend upon Forest City, Iowa. Rally-goers enjoy an unforgettable week reconnecting with friends, taking tours, participating in activities, and more. Join the adventure next July!

# **WINNEBAGO**<sup>IND</sup>

## CONTACT US

### GENERAL INQUIRIES

Corporate Switchboard  
(641) 585-3535

### CURRENT PRODUCT OWNER AND SERVICE-RELATED INQUIRIES

(800) 537-1885  
or [@winnebagoind.com](mailto:@winnebagoind.com)

### NEW VEHICLE SALES INQUIRIES

[sales@winnebagoind.com](mailto:sales@winnebagoind.com)

### FAX

(641) 585-6966

### POSTAL ADDRESS

Winnebago Industries, Inc.  
P.O. Box 152  
Forest City, IA 50436

### STREET ADDRESS

Winnebago Industries, Inc.  
605 West Crystal Lake Road  
Forest City, IA 50436