

HIDEOUT

Keystone RV
Company



HORNET

HIDEOUT

WWW.KEYSTONE-HIDEOUT.COM



HORNET

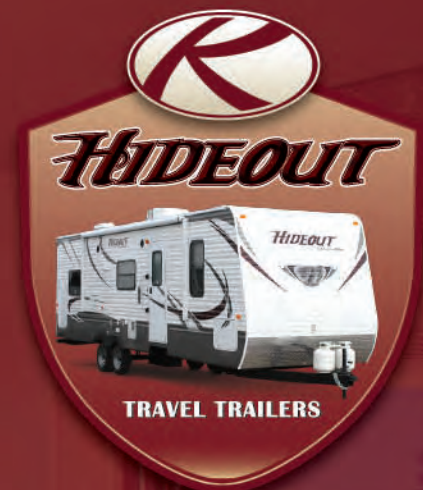
WWW.KEYSTONE-HORNET.COM



The 31RBDS bunk room is designed specifically to be the kids' domain. We've built in plenty of storage for all the clothes and toys. Best of all, everyone has their own space when it's time to settle in for the night..



27DBS BUNKS OFFER COMFORT FOR THE WHOLE FAMILY.



The Hideout introduces the perfect lineup of RVs for your family. Kids, grand-children, friends - everyone fits with room to spare in a Hideout. With an incredible choice of bunkhouse and family friendly models, Hideout is your perfect choice for family camping.

HIDEOUT 26RLS SHOWN IN SADDLEBROOK DECOR

Luxury Comes Standard

*Limited Time Only



With upscale luxury features inside and out the Hideout is more than just a travel trailer.

Comfort and luxury for the whole family are standard in the Hideout.

Visit us online to see more features and information.
www.keystone-hideout.com



HIDEOUT

Luxury Package Features

1. Radius Interior Bath Walls
2. Night Shades in Living Room
3. Kitchen Countertop Extension
4. Interior TV Bracket w/Disconnect for Exterior TV Use
5. Exterior TV Hookup/Cable and Bracket
6. E-Coated Wheels
7. Upgraded Graphics Package
8. Entrance Door Featuring Integrated Strut
9. Dometic Adjustable Power Awning
10. XL Entry Assist Handle
11. LCD TV
12. Jensen CD/DVD Player
13. Black Tank Flush
14. 4 Interior Surround Sound Speakers



NEO ANGLE SHOWER

AVAILABLE IN THE FOLLOWING MODELS
25RKS, 27RBS, 28RLS, 30RKDS,
31RLDS, 38BHDS, 38FQDS



DECOR OPTIONS



BROOKSTONE



GREEN LEAF



SADDLEBROOK

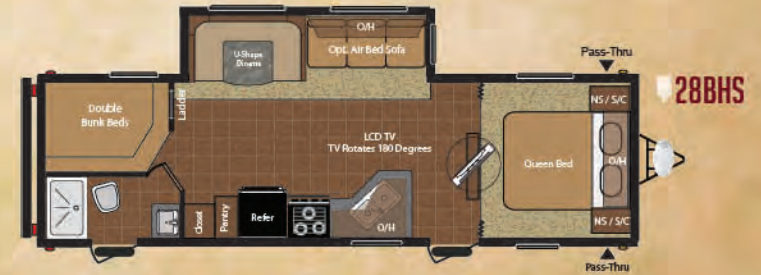
HIDEOUT FLOORPLANS



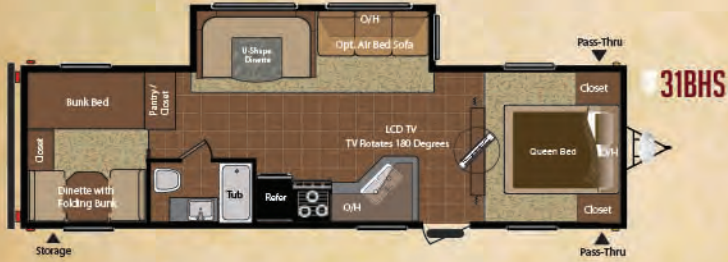
Get the high-end look without the high-end price! Hideout offers a wide range of floorplans, features, and luxury details in a light and affordable travel trailer. There's sure to be a floorplan to match your camping needs.



Get the free mobile app at <http://gettag.mobi> and scan this Tag.



View the 29BHS Pull Out Camp Kit and more on www.keystone-hideout.com
Click on the camera icon in the floorplans page to view snap shots



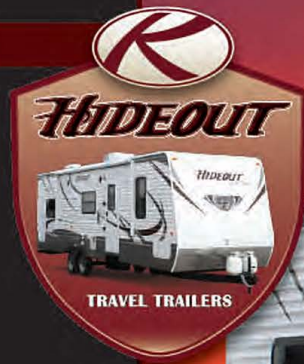
MODEL	19FLB	20RD	23RB	25RKS	26B	26RLS	27DBS	27RBS	28BHS	28RLS	29BHS	30FKDS	30RKDS	31BHS	31RBDs	31RLDS	32FLTS	38BHDS	38FQDS
SHIPPING WEIGHT	4174	4156	4805	5945	5208	6155	6230	6470	6610	6960	7030	7217	7450	6780	7785	7625	8290	8260	8279
CARRYING CAPACITY	2626	2644	2710	1715	2392	1670	1610	2830	3010	2760	2695	2688	2310	2845	1810	2035	1560	1775	1736
HITCH WEIGHT	405	450	515	660	600	825	840	765	820	920	925	1105	960	825	795	860	1080	1235	1215
LENGTH	23'	22' 6"	27' 1"	29' 8"	29' 11"	29' 11"	31' 10"	31' 3"	32' 3"	32' 2"	33' 11"	33' 2"	33' 3"	33' 11"	35' 8"	34' 11"	36' 9"	39' 10"	39' 10"
HEIGHT	10' 6"	10' 6"	10' 6"	11' 3"	10' 6"	11' 3"	11' 3"	11' 3"	11' 3"	11' 5"	11' 5"	11' 5"	11' 5"	11' 5"	11' 5"	11' 5"	11' 5"	11' 5"	11' 5"
FRESH WATER	45	45	45	45	45	45	45	45	45	45	45	45	45	45	45	45	45	45	45
WASTE WATER	32	38	38	38	32	38	32	38	38	38	38	38	38	38	38	38	38	38	38
GRAY WATER	38	38	38	70	38	32	38	32	70	38	38	76	76	38	38	38	38	38	38
LPG	40	40	40	40	40	40	40	40	40	40	40	40	40	40	40	40	60	40	40

DISCLAIMER: Product information is as accurate as possible as of the date of publication of this brochure. All features, floor plans, and specifications in this brochure are subject to change without notice. Please also consult Keystone's web site at www.keystonerv.com for more current product information and specifications. All customers should consult with a motor vehicle manufacturer or their dealer concerning the purchase and use of suitable tow vehicles for Keystone products. Keystone disclaims any liability or damages suffered as a result of the selection, operation, use or misuse of a tow vehicle. **KEYSTONE'S LIMITED WARRANTY DOES NOT COVER DAMAGE TO THE RECREATIONAL VEHICLE OR THE TOW VEHICLE AS A RESULT OF THE SELECTION, OPERATION, USE OR MISUSE OF THE TOW VEHICLE.** 03/12

WEIGHTS & MEASUREMENTS

CONSTRUCTION

- One Piece Rubber Roof
- 3/8" OSB Roof Decking
- Twin 20 Lb. LP Bottles with Cover
- Electric Color Matched Awning
- R-7 Insulation Throughout
- Dual Battery Trays
- Radius Window Corner Blocks
- 5/8" Seamless Floor Decking
- Easy Lift Steps
- 6 Gallon Gas DSI Water Heater
- Easy Lube Axles
- Stabilizer Jacks
- Black Framed, Tinted Safety Glass Windows
- Rain Gutter with Down Spouts
- Exterior Speakers
- 13,500 BTU Ducted Air Conditioner
- Bumper Sewer Hose Storage



- Double Trusses at Openings
- Walkable Crowned Roof
- Foam Core Insulated Ducts

- Hurricane Strap Reinforcement
- Oversized Pass Through Storage
- Diamond Plate Front Protector
- One Piece I-Beam Powder Coated Frame



Two burner gas stove which rotates inward for storage

Abundant overhead cabinet storage

110 volt receptacle and cable TV connection

Compact electric refrigerator

Silverware drawer

Sink with hot and cold water and sprayer hose

Paper towel holder

Fully Functional Outdoor Kitchen

(Available on Hideout models 31RBDS and 27RBS)





NEW
AERODYNAMIC
FRONT PROFILE

NEW
DESIGN & GRAPHICS



- EZ Trax Axle System
- Aerodynamic Front Profile
- Aluminum Wheels Option
- Darco Wrapped Main Floor Moisture Barrier
- 5/8" Seamless Sub-Floor
- Sub-Floor Limited Lifetime Warranty
- Laminated Side Wall
- Interior Radius Walls
- Heated and Enclosed Underbelly

- 4 1/2" Crowned Roof
- Truss Cleats on Both Sides
- Double Trussed at Openings
- Loomed Wiring
- Radius Corner Blocks
- Radius Storage Doors
- Radius Entry Doors
- Neo Angle Shower (all models)

HORNET FLOORPLANS



WEIGHTS & MEASUREMENTS

MODEL	275RLS	285RKS	295BHS
SHIPPING WEIGHT	7330	7625	7890
CARRYING CAPACITY	2845	2530	2410
HITCH WEIGHT	1375	1355	1540
LENGTH	30' 2"	31' 5"	32' 4"
HEIGHT	11' 9"	11' 9"	11' 9"
FRESH WATER	45	45	45
WASTE WATER	38	38	38
GRAY WATER	38	76	76
LPG	60	60	60

DISCLAIMER: Product information is as accurate as possible as of the date of publication of this brochure. All features, floor plans, and specifications in this brochure are subject to change without notice. Please also consult Keystone's web site at www.keystonerv.com for more current product information and specifications. All customers should consult with a motor vehicle manufacturer or their dealer concerning the purchase and use of suitable tow vehicles for Keystone products. Keystone disclaims any liability or damages suffered as a result of the selection, operation, use or misuse of a tow vehicle. KEYSTONE'S LIMITED WARRANTY DOES NOT COVER DAMAGE TO THE RECREATIONAL VEHICLE OR THE TOW VEHICLE AS A RESULT OF THE SELECTION, OPERATION, USE OR MISUSE OF THE TOW VEHICLE. 03/12



HORNET 275RLS SHOWN IN BROOKSTONE DECOR



HORNET

Platinum

All new aerodynamic profile, 7-foot tall ceilings, more storage, and new Mega Slide System deliver more livability in these family friendly RVs. Step out of the ordinary and step into the NEW Hornet.



Get the free mobile app at <http://gettag.mobi> and scan this Tag.

HIDEOUT STANDARD FEATURES

EXTERIOR

- » Upgraded Graphics Package
- » Dometic Power Awning
- » Black Tank Flush
- » Exterior TV Hookup/Cable and Bracket
- » Entrance Door Featuring Integrated Strut
- » XL Entry Assist Handle
- » Walk on Roof
- » Ladder Backers (N/A 19FLB)
- » Powder Coated I-Beam Frame
- » Cambered Chassis
- » Two Heavy Duty Stabilizer Jacks
- » Easy Lube Axles
- » Full Length Outriggers
- » Dual Battery Rack
- » Two 20 lb. LP Bottles
- » Awning Color Coordinated

- » Heated and Enclosed Fresh Water Tank
- » Fender Skirts
- » Exterior Speakers
- » Black Radius Window Frames
- » TV Antenna with Booster
- » Radio Antenna
- » Roof Vents
- » Cable Hook Up
- » GFI Electrical Outlets
- » Seamless One Piece Roof
- » Radius Skirting
- » Oversized Pass Thru Storage
- » Hose Storage in the Bumper
- » .024 Gauge Aluminum Siding
- » R-7 Insulation Throughout
- » Rain Gutters with Down Spouts
- » Four Stage Slide Room Seals
- » Roto-Cast Seamless Holding Tanks

INTERIOR

- » Radius Interior Bath Walls
- » 4 Interior Surround Sound Speakers
- » Interior TV Bracket
- » LCD TV
- » Kitchen Countertop Extension
- » Ball Bearing Drawer Guides
- » Nightshades in Living Room Arrangements
- » 12 Volt 55 Amp Converter
- » 13,500 BTU Air Conditioner
- » Entertainment System with AM/FM, CD, MP3 Jack
- » Jensen DVD Player
- » Foam Core Insulated A/C Ducts
- » Wallpaper Border
- » Built-In Furnace
- » 6 Gallon Gas DSI Quick Recovery Water Heater with By Pass Kit
- » Flex Pex Tubing with 10 Year Warranty
- » 84" Interior Height
- » 72" inch Slide Room Height

- » Tub Surround
- » Porcelain Foot Flush Toilet
- » Wall Switches for the Lights
- » RG6 Cable and Satellite Wiring
- » Pre-Drilled & Screwed Residential Cabinetry Throughout
- » Decorative Window Treatments
- » Panoramic Dinette Window
- » Jack Knife Sofa-Standard
- » Mini Blinds
- » 4 1/2" Crowned Roof
- » Truss Cleats on Both Sides
- » Double Trussed at Openings
- » Hurricane Straps Throughout
- » Loomed Wiring
- » Radius Corner Blocks
- » Radius Storage Doors
- » Radius Entry Doors

SAFETY

- » Safety Chains

- » Break Away Switch
- » Electric Brakes on All Wheels
- » Carbon Monoxide Detector
- » L.P. Gas Detector
- » Smoke Detector
- » Fire Extinguisher
- » GFI Electrical Outlets
- » Tinted Safety Glass
- » Radial Tires

OPTIONS

- » Exterior Shower
- » Spare Tire and Carrier
- » Air Bed Sofa (N/A 19FLB, 20RD, 23RB, 26B)
- » Rear Ladder (N/A 19FLB)
- » 15,000 BTU Air Conditioner
- » Two Additional Stabilizer Jacks (Four Total)
- » Gas / Electric DSI Water Heater
- » Residential Refrigerator (38BHDS, 38FDQS only)
- » Twin 30# L.P. Bottles with Easy Access Cover
- » Freestanding Dinette (38BHDS, 38FDQS only)

*All Features Not Available on all Models.

HORNET STANDARD FEATURES

EXTERIOR

- » Walk on Roof
- » Electric Awning
- » Filon Front Cap
- » Ladder Backers
- » Powder Coated I-Beam Frame
- » Cambered Chassis
- » Four Heavy Duty Stabilizer Jacks
- » EZ Trax Suspension System
- » Aluminum Rims
- » Easy Lube Axles
- » Full Length Outriggers
- » Dual Battery Rack
- » Two 30lb Bottles with Cover and Auto Changeover
- » Awning Color Coordinated
- » Heated and Enclosed Underbelly
- » Fender Skirts
- » Diamond Plate

- » Exterior Speakers
- » Black Radius Window Frames
- » TV Antenna with Booster
- » Radio Antenna
- » Roof Vents
- » Cable Hook Up
- » GFI Electrical Outlets
- » Seamless One Piece Roof
- » Radius Skirting
- » Full Basement Storage on all Hornets Under Queen Bed
- » Hose Storage in the Bumper
- » R-9 Insulation Throughout
- » Rain Gutters with Down Spouts
- » Four Stage Slide Room Seals
- » Roto-Cast Seamless Holding Tank

INTERIOR

- » LCD TV
- » 13,500 BTU Air Conditioner

- » True Sound Entertainment System with AM/FM, CD, DVD, MP3 Jack
- » Foam Core Insulated A/C Ducts
- » Wallpaper Border
- » 72" Slide Ceiling Height
- » 30,000 BTU Furnace
- » 6 Gallon Gas/Electric DSI Quick Recovery Water Heater
- » Heater with By-Pass Kit
- » Flex Pex Tubing with 10 Year Warranty
- » Ball Bearing Drawer Guides
- » Wall Switches for the Lights
- » RG6 Cable and Satellite Wiring
- » Sculptured Valances with Lambrequins
- » Panoramic Dinette Window
- » Deep Slide Room Cabinets
- » Shirt Closets
- » 60" BY 80" Air Mattress Hide-A-Bed Sofa

BEDROOM

- » TV Hook Up
- » Bedsread-Master Bedroom

- » Bed Storage with Air Shocks
- » Cabinets Above Queen Bed
- » Reading Light

BATH

- » Porcelain Foot-Flush Toilet
- » Tub Surround
- » Shower Exhaust Fan
- » Large Medicine Cabinet
- » Robe and Towel Hooks

KITCHEN

- » 12 Volt Shur Flo Water Pump
- » Three Drawers
- » Silverware Divider
- » Holding Tank Monitor Panel
- » Range with Hi-Output Burner
- » 6 cu foot Refrigerator (5 Settings)
- » Exhaust Fan with Light
- » Microwave
- » Reversible Dinette Cushions
- » Largest Residential Kitchen Sink

- » High Rise Kitchen Faucet
- » Waste Basket Storage
- » Pre-Drilled & Screwed Residential Cabinetry Throughout
- » Mortise and Tenon Door Joints
- » Raised Panel Upper Cabinet Doors
- » Overhead Cabinets Above the Sink
- » Sink Cover
- » Heavy Duty Ball Bearing Drawer Glides
- » Counter Top Extensions

OPTIONS

- » Spare Tire Carrier/Cover
- » Rear Ladder
- » Two Swivel Rockers (31RLDS)
- » Free Standing Dinette
- » 15,000 BTU Air Conditioner



**Keystone RV
Company**

2642 HACKBERRY DRIVE | P.O. BOX 2000
GOSHEN, IN 46527 | 574.535.2100 | WWW.KEYSTONERV.COM

Colton RV
North Tonawanda, NY 14120
(716) 694-0188
(800) 628-4889
www.ColtonRV.com



HIDEOUT
www.keystone-hideout.com



HORNET
www.keystone-hornet.com