

TRAVEL TRAILERS



YOUR JOURNEY BEGINS HERE!



www.primetimerv.com

AVENGER

by PRIME TIME Mfg.



North America's
Favorite RV Company!



AVENGER
by PRIME TIME MFG.



Avenger 34DQB Living And Kitchen Area

For both the first-time buyer and seasoned camping veteran, the value-conscious Avenger often represents a customer's first experience with a recreational vehicle from Prime Time Manufacturing. Since first impressions are critical - and last a lifetime - we've insisted that Avenger combine comfort, convenience, and style with the industry's highest standard of quality and construction. By providing a GREAT ownership experience, Avenger is Prime Time's way of welcoming you to our family. We hope that your future journeys will always include a Prime Time RV.



Avenger 28RKS Kitchen Area

AVENGER
by PRIMA-TIME INC.



Avenger 33RCI Living Area

To guarantee that Avenger provides true customer satisfaction, our engineers carefully examined every component, every small detail, and every process that went into Avenger's creation. It was important to offer industry-leading beauty, so real Native American Cherry hardwood cabinet doors were paired with premium fabrics, flooring, and countertops for a luxurious appearance. Features and design elements that are considered to be "Best In Class" and rarely found on the competition were specified to fully maximize customer enjoyment. Demanding testing standards and innovative construction techniques like EVERLAST® were developed to ensure long-term quality and durability. If "Your Journey Begins Here," Avenger is sure to please.



Avenger 26BH With Optional Privacy Door



Avenger 18TH Toy Hauler In Travel Mode



Avenger 18TH Toy Hauler In Camp Mode



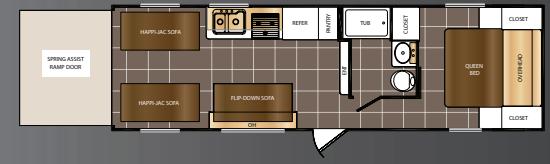
18TH Toy Hauler



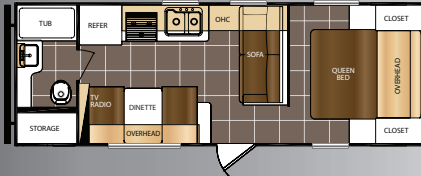
New 21TH Toy Hauler



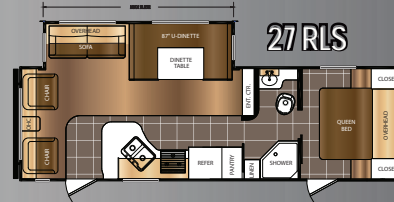
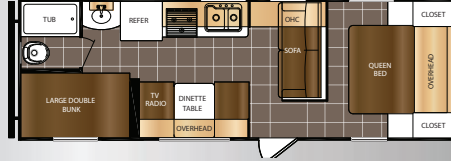
New 25TH Toy Hauler



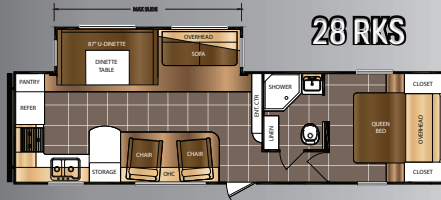
New 22RB



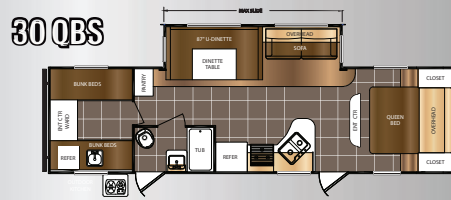
26BH



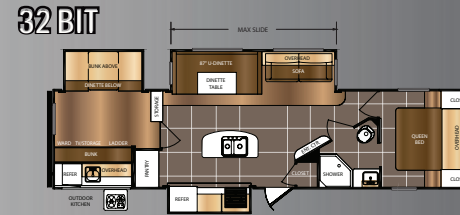
28DBS



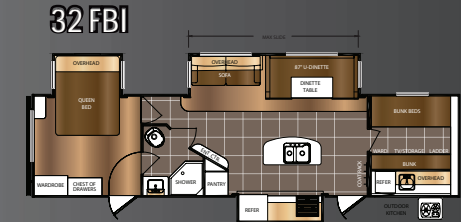
28RKS



30QBS

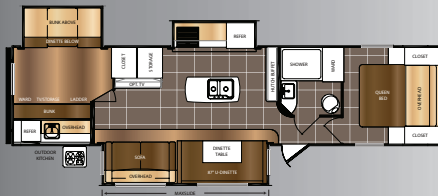


32BIT

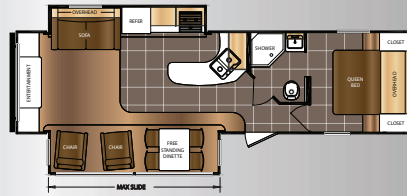


32FBI

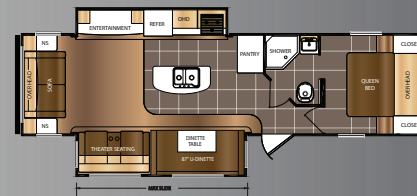
New 32QBI



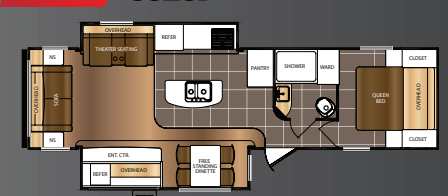
32RED



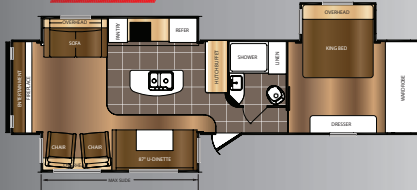
33RSD



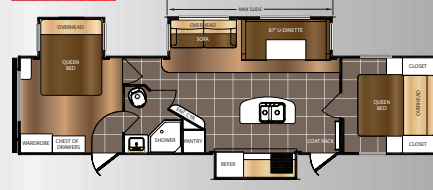
New 33RCI



New 33RET



New 34DQB



SPECIFICATIONS	18TH	21TH	22RB	25TH	26BH	27RLS	28DBS	28RKS	30QBS	32BIT	32FBI	32QBI	32RED	33RSD	33RCI	33RET	34DQB
LENGTH	24' 0"	26' 4"	26' 9"	32' 0"	28' 11"	31' 1"	33' 0"	34' 4"	33' 11"	37' 8"	37' 2"	37' 11"	34' 9"	35' 8"	35' 11"	38' 5"	37' 10"
HEIGHT	10' 7"	TBD	10' 7"	10' 10"	10' 7"	11' 2"	11' 2"	11' 2"	11' 2"	11' 4"	11' 4"	11' 4"	11' 4"	11' 4"	11' 4"	11' 4"	11' 4"
HITCH WEIGHT	725 lb.	TBD	624 lb.	1,073 lb.	580 lb.	736 lb.	899 lb.	680 lb.	885 lb.	871 lb.	983 lb.	1,000 lb.	758 lb.	840 lb.	938 lb.	1,102 lb.	1,009 lb.
UNLOADED VEHICLE WEIGHT (UVW)	4,618 lb.	TBD	4,747 lb.	5,874 lb.	4,888 lb.	6,328 lb.	6,769 lb.	6,789 lb.	7,151 lb.	8,431 lb.	8,498 lb.	9,029 lb.	7,427 lb.	7,447 lb.	8,144 lb.	9,047 lb.	8,372 lb.
CARGO CARRYING CAPACITY (CCC)	3,107 lb.	TBD	2,877 lb.	2,199 lb.	2,692 lb.	3,208 lb.	2,930 lb.	2,691 lb.	2,534 lb.	2,840 lb.	2,885 lb.	2,371 lb.	3,731 lb.	3,793 lb.	3,184 lb.	2,455 lb.	3,037 lb.



Avenger 27DBS Living Area

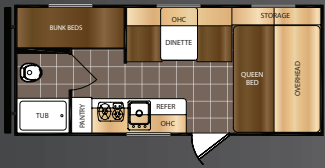


Avenger 20RD Dinette

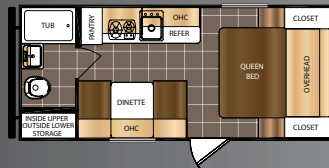


Avenger 27DBS Outside Camp Kitchen

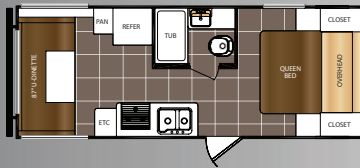
17BH



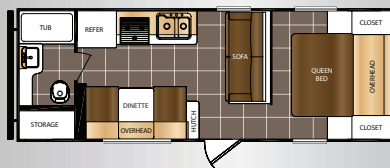
17QB



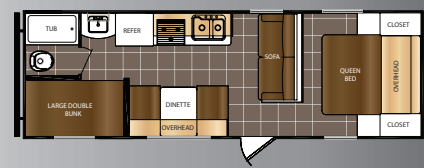
20RD



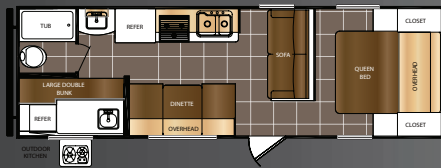
21RB



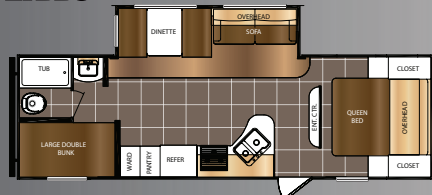
26BB



New 26BK



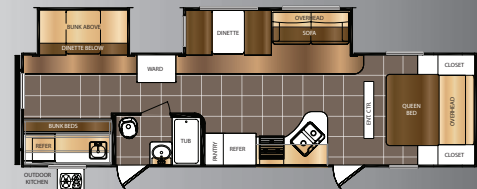
27BBS



New 27DBS



32BBS



SPECIFICATIONS	17BH	17QB	20RD	21RB	26BB	26BK	27BBS	27DBS	32BBS
LENGTH	21' 8"	21' 4"	24' 11"	26' 9"	28' 11"	28' 11"	30' 7"	32' 11"	35' 11"
HEIGHT	10' 1"	10' 1"	10' 3"	10' 3"	10' 3"	10' 3"	10' 8"	10' 8"	11' 4"
HITCH WEIGHT	416 lb.	441 lb.	620 lb.	587 lb.	552 lb.	474 lb.	679 lb.	721 lb.	831 lb.
UNLOADED VEHICLE WEIGHT (UVW)	3,288 lb.	3,214 lb.	4,294 lb.	4,537 lb.	4,718 lb.	4,763 lb.	5,814 lb.	6,652 lb.	7,601 lb.
CARGO CARRYING CAPACITY (CCC)	628 lb.	727 lb.	3,326 lb.	3,050 lb.	2,834 lb.	2,711 lb.	1,865 lb.	2,869 lb.	2,030 lb.

UVW (Unloaded Vehicle Weight)* is the typical weight of the unit as manufactured at the factory. It includes all weight at the unit's axle(s) and tongue or pin and LP Gas. The UVW does not include cargo, fresh potable water, additional optional equipment or dealer installed accessories. *Estimated Average based on standard build optional equipment.

CCC (Cargo Carrying Capacity)** is the amount of weight available for fresh potable water, cargo, additional optional equipment and accessories. CCC is equal to GVWR minus UVW. Available CCC should accommodate fresh potable water (8.3 lbs per gallon). Before filling the fresh water tank, empty the black and gray tanks to provide for more cargo capacity. ** Estimated average based on standard build optional equipment.

See back page for additional specification definitions.

AVENGER STANDARDS & OPTIONS

AVENGER ADVANTAGE PACKAGE

- “EVERGREEN” Select Luxury Mattress
- LARGE Double Door Refrigerator
- Carousel Microwave
- Ducted A/C With Directional Vents
- Deluxe Power Awning with LED Lights
- 6 Gallon Gas/Electric DSI Water Heater
- 18 Gallon/HR Quick Recovery Mode For Water Heater
- Water Heater Bypass
- Exterior Shower With Hot/Cold Water
- EZ Winterization Kit
- Thermal Package Plus
 - Enclosed Underbelly
 - Heated Holding Tanks (N/A 18TH, 21TH, 25TH)
 - Extended Season Enjoyment
- “E-Z LUBE” Axles
- Tub Surround
- Radial Tires
- Coach-Net® 24 HR Roadside Assistance
- Aluminum Rims

CONSTRUCTION

- Cambered High Strength Low Alloy Steel Frame
- 8’ Exterior Width
- Aluminum Exterior Skin
- R-7 Insulation Throughout
- 2 x 3 Floor Joists On 16” Centers
- 5/8” Seamless Floor Decking

- With 25 Year Warranty
- 5” Snow Load Roof Rafters on 16” Centers
- Walk-On Roof With 3/8” Roof Decking
- One Piece TPO Roof
- PEX Plumbing System
- Upgraded Oetiker Water Line Fittings
- EVERLAST® CONSTRUCTION
 - 2” Wall Construction On 16” Centers
 - Cross Banded Construction

BEDROOM

- Residential Bed Spread
- Bunk Mats (Where Applicable)
- Bedroom TV Cable Connection
- Dual Shirt Closets (N/A 18TH, 32FBI, 33RET)
- Massive Under Bed Storage
- Bed Platform Prop For Ease of Access
- Extra Large Overhead Cabinets Above Bed

INTERIOR STANDARDS

- Oversized MAX Slide
- Massive 87” U-Shape Dinette on MAX Slide Models (N/A 32RED, 33RCI)
- Deep Overhead Cabinets In MAX Slide
- Fully Vented Windows In MAX Slide
- Pleated Shades In Living & Dining Room (N/A 18TH, 21TH, 25TH, 22RB, 26BH)
- Mini Blinds In Living & Dining Room (18TH, 21TH, 25TH, 22RB, 26BH)
- Predrilled And Screwed Cherry

- Finish Cabinetry
- Solid Wood Core Cabinets
- Extended Ball Bearing Drawer Glides
- Residential HAB Sofa (All Slide Models)
- Residential Grade Carpet in Select Areas
- 82” Interior Ceiling Height

EXTERIOR STANDARDS

- 4 Stabilizer Jacks
- Extended Drip Spouts
- Black Framed Radius Windows with Deep Tint
- DOT Approved Safety Glass Windows
- Fully Vented Windows Throughout
- Dual LP Bottles
- City Water Fill
- Gravity Fresh Tank Fill
- Color Coordinated Front With Diamond Rock Guard
- Outside Shower
- Radial Tires
- Marine Grade Outdoor Speakers
- Radius Entrance Door With Window
- Bumper With Sewer Hose Storage And End Caps
- Large Entry Door Grab Handle
- Outdoor Kitchen (30QBS, 32BIT, 32FBI, 32QBI, 33RCI)

APPLIANCES and EQUIPMENT

- Exterior TV Coax Connection

- Cable TV Hook-Up With RG6 Coax
- Digital TV Antenna With Signal Booster
- AM/FM/CD/DVD with Bluetooth
- 13,500 BTU Air Conditioner
- 3 Burner Range With High Output Front Burner
- Large Oven
- Range Hood With Light And Exhaust Fan
- High Capacity Furnace
- In Floor Ducted Heat
- Auto Ignition Furnace With Wall Thermostat
- Systems Monitor Panel
- 12V Electrical System With 55AMP Power Converter
- 110V GFCI Protected
- 12V High Capacity Water Pump
- 30AMP Power

KITCHEN

- Deep Double Bowl 60/40 Sink
- High Rise Kitchen Faucet
- Spice Rack Valance (N/A Island Kitchen Models)
- Pot and Pan Drawer Under Stove
- Pan Drawer Under Refrigerator (N/A Island Kitchen Models, 32RED)

BATHROOM

- Shower Curtain With Curved Track
- Glass Neo Angle Shower (Select Models)
- 12V Power Vent Fan

- Medicine Cabinet With Mirror

SAFETY EQUIPMENT OWNER PROTECTION

- CO Detector
- LP Detector
- Fire Extinguisher
- Smoke Alarm
- Dual Hitch Safety Chains
- Leak-Guard Assurance Process

POPULAR OPTIONS

- 15,000 BTU Air Conditioner
- Sleep & Play Sofa (32BIT, 32QBI Only)
- Free Standing Dinette & 4 Chairs (32RED, 33RCI Mandatory. N/A 18TH, 21TH, 25TH, 22RB, 26BH)
- LCD Television (32RED, 33RET, 33RCI Mandatory)
- Spare Tire With Cover
- Privacy Wall With Wood Sliding Door (26BH Only)
- 50AMP Service, Wired & Framed For 2nd A/C (33RET Mandatory. N/A 18TH, 21TH, 25TH, 22RB, 26BH, 27RLS)

TANK CAPACITY

- FRESH WATER: 48 Gallons
- GREY WATER: 30 Gallons*
- BLACK WATER: 30 Gallons*

*Some models vary. See website for additional details.

AVENGER ATI STANDARDS & OPTIONS

AVENGER ADVANTAGE PACKAGE

- “EVERGREEN” Select Luxury Foam Mattress
- Refrigerator
- Carousel Microwave
- Deluxe Patio Awning
- 6 Gallon Gas DSI Water Heater
- “E-Z” Lube Axle
- Radial Tires
- Coach-Net® 24 HR Roadside Assistance

CONSTRUCTION

- Cambered High Strength Low Alloy Steel Frame
- Aluminum Exterior Skin
- R-7 Insulation Throughout
- 2 x 3 Floor Joists On 16” Centers
- 5/8” Seamless Floor Decking With 25 Year Warranty
- 5” Snow Load Roof Rafters On 16” Centers
- Walk-On Roof With 3/8” Roof Decking
- One Piece TPO Roof
- PEX Plumbing System
- Upgraded Oetiker Water Line Fittings

- EVERLAST® CONSTRUCTION
 - 2” Wall Construction on 16” Centers
 - Cross Banded Construction

EXTERIOR STANDARDS

- Exterior Shower (N/A - 17BH, 17QB)
- 4 Stabilizer Jacks (N/A - 17BH, 17QB)
- 2 Stabilizer Jacks on Rear (17BH, 17QB)
- Extended Drip Spouts
- Black Framed Radius Windows With Deep Tint
- DOT Approved Safety Glass Windows
- Fully Vented Windows Throughout
- LP Bottle
- City Water Fill
- Gravity Fresh Tank Fill
- Color Coordinated Front With Diamond Rock Guard
- Radius Entrance Door With Window
- Patio Light With Inside Light Switch

INTERIOR STANDARDS

- Mini Blinds Throughout
- Predrilled And Screwed Cherry Finish Cabinetry
- Solid Wood Core Cabinets

APPLIANCES/EQUIPMENT

- Cable TV Hook-Up With RG6 Coax
- Digital TV Antenna With Signal Booster
- AM/FM/CD Radio
- 13,500 BTU Air Conditioning
- 2 Burner Range With High Output Front Burner (17BH,17QB)
- 3 Burner Range With High Output Front Burner (N/A - 17BH,17QB)
- Range Hood With Light And Exhaust Fan
- 3 Cubic Foot Dometic® Refrigerator (17BH,17QB)
- Large Double Door Refrigerator (N/A - 17BH,17QB)
- 6 Gallon DSI Gas Water Heater
- Water Heater Bypass
- EZ Winterization Hookup
- Auto Ignition Furnace With Wall Thermostat
- Systems Monitor Panel
- 110V GFCI Protected
- 12V High Capacity Water Pump
- 30AMP Power

BATHROOM

- Shower Curtain With Curved Track

KITCHEN

- Deep Bowl Kitchen Sink

SAFETY EQUIPMENT

- CO Detector
- LP Detector
- Fire Extinguisher
- Leak Guard Assurance Process
- Smoke Alarm

OPTIONS

- Spare Tire With Cover
- 15K A/C (27BBS, 27DBS 32BBS Only)
- Power Awning (N/A 17BH, 17QB)
- Oven (N/A 17BH, 17QB)

TANK CAPACITY

- FRESH WATER: 48 Gallons
- GREY WATER: 34 Gallons*
- BLACK WATER: 34 Gallons*

*Some models vary. See website for additional details.



Your Journey Begins Here!

AVENGER FEATURES



Aluminum Rims



LED Interior Lights



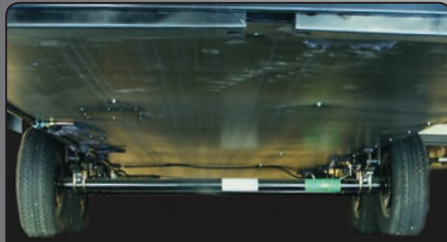
Avenger features 82" Interior height with the MAX Slide at nearly 6 ft. WOW!



MAX Slide Features an 87" U Dinette



MAX Slide Features a Residential Hide-A-Bed Sofa



Enclosed Underbelly



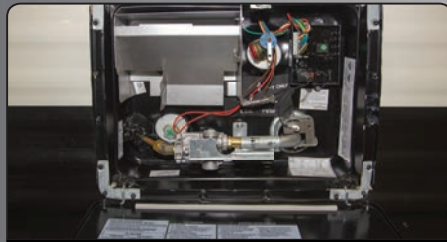
Avenger Has Ducted Heat & Air



Glass Stove Top Cover



Dual Pots-N-Pans Drawers



18 Gallon/HR Water Heater Recovery



Easy Access Low Point Drains



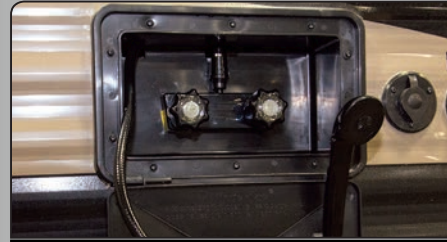
Extended Drip Spouts



Bluetooth Stereo



Pocket Screwed Cabinets



Outside Shower



Exterior TV Hook-Ups

DSI QUALITY CIRCLE AWARD WINNER - 2010, 2011, 2012, 2013, 2014, 2015

Prime Time Manufacturing is proud to be recognized as an industry leader in value, reliability, and overall quality by the Recreational Vehicle Dealers Association. This was accomplished by committing ourselves to "A Higher Standard" in design, construction, testing, and customer service. Check us out — we know you'll be impressed!



Seal Tech Air Pressure Test



EVERLAST® Cross Banded Construction



Advanced Engineering



Seek-A-Leak Pressure Test



65 Point Secondary PDI



Web Based Customer Service



Executive Quality Audits



Rain Bay

ADDITIONAL SPECIFICATIONS:

GAWR (Gross Axle Weight Rating) is the maximum permissible weight, including cargo, fluids, optional equipment and accessories that can be safely supported by a combination of all axles.

Each Forest River RV is weighed at the manufacturing facility prior to shipping. A label identifying the unloaded vehicle weight of the actual unit and the cargo carrying capacity is applied to every Forest River RV prior to leaving our facilities. The load capacity of your unit is designated by weight, not by volume, so you cannot necessarily use all available space when loading your unit.



www.primetimerv.com
PO Box 330 • 55470 CR 1 • Elkhart, IN 46515

Follow Us On Facebook

HERE'S JUST A SAMPLE OF THE BENEFITS*

- Mobile Mechanic
- Free Jump Starts
- Tire Changes
- \$2000 Trip Interruption
- Appointment Assistance
- Lock Out Service
- Fuel Delivery
- Service Assistance
- Custom Trip Routing and Maps
- 24 Hour Emergency Messaging

*Exclusions and restrictions apply. See member guide for details.

24/7 EMERGENCY ROADSIDE ASSISTANCE

For a worry-free ownership experience Forest River includes one year of Coach-Net RV Technical & Roadside Assistance with each RV purchase. Whether new to the RV lifestyle or an experienced RV enthusiast, Forest River owners have 24/7 access to technical, operational and emergency road service coverage throughout the US & Canada. Coach-Net's fast, dependable service is just a phone call away.

Coach-Net®
RV Technical & Roadside Assistance

FROG™ the Forest River Owners' Group!

FREE MEMBERSHIP
to Forest River Owners' Group

www.forestriverfrog.com



Forest River, Inc. encourages our customers to purchase their Forest River products from a local dealership whenever possible for the following reasons:

- 1) Forest River, Inc. dealers are independently owned and operated businesses so priority service and scheduling is at their discretion and is often provided to customers that purchased their unit at that dealership.
- 2) Purchasing locally allows customers to establish meaningful relationships with a dealer, enhancing the RV experience through assistance with product questions, user tips or RV regulations for your state or country, and much more!
- 3) Canadian customers must meet requirements to bring an RV purchased out of the country to their home. These requirements may involve additional inspections and certifications, taxes and fees. Your local Canadian Dealer is a professional at meeting these requirements.
- 4) Scheduling timely warranty repairs and adjustments through a local dealership provides far greater flexibility and convenience to you, the customer!

It is the goal of Forest River, Inc. that all of our RV owners fully enjoy the RV experience and that customer satisfaction meets or exceeds their expectations!

All information contained in this brochure is believed to be accurate at the time of publication. However, during the model year, it may be necessary to make revisions and Forest River, Inc., reserves the right to make all such changes without notice, including prices, colors, materials, equipment and specifications as well as the addition of new models and the discontinuance of models shown in this brochure. Therefore, please consult with your Forest River, Inc., dealer and confirm the existence of any materials, design or specifications that are material to your purchase decision.

©2015 Prime Time Manufacturing

A Division Of Forest River, Inc.,
A Berkshire Hathaway Company.
All Rights Reserved



Learn More
Scan this barcode using a QR Reader on your smart phone to learn more about Forest River.



A Berkshire Hathaway company.

Colton RV & Marine
3122 Niagara Falls Blvd
North Tonawanda, NY 14120
(716) 694-0188
www.ColtonRV.com

Colton RV & Marine
3443 Southwestern Blvd.
Orchard Park, NY 14127
(716) 957-3250
www.Coltonrv.com

DEALER