

# Outback

TRAVEL TRAILERS AND FIFTH WHEELS



**DESIGNED FOR A LIFETIME OF RVING**



# Outback

## **DESIGNED FOR A LIFETIME OF RVING**

---

What do you get when you combine the latest features, the best components and industry leading quality? You get an Outback. Whether you're looking for a small trailer for those quick weekend getaways or all the comforts of home for a cross country adventure Outback has something that fits your needs. See why Outback truly is Designed For A Lifetime of RVing!

[www.keystonerv.com/Outback](http://www.keystonerv.com/Outback)



## **OUTBACK** *Ultra-Lite* **TRAVEL TRAILERS**

**TOPS IN TOWING.** Outback Ultra-Lite provides the comfort you need without all the weight. Get the maximum amount of space while minimizing your weight in one of the Outback Ultra-Lite models. You will find towing an Outback Ultra-Lite is a breeze. Designed to today's smaller trucks and SUV's.



**PAGES 4-9**



## **OUTBACK** *Diamond Super-Lite* **TRAVEL TRAILERS**

**COMFORTABLY CAMPING.** Maximum features, maximum storage and maximum comfort. You are going to find Outback's Diamond Super-Lites are designed for a lifetime of RVing.



**PAGES 10-15**



## **OUTBACK** *Diamond Super-Lite* **FIFTH WHEELS**

**SIZE MATTERS.** All the room, storage and towability you expect in a 5th wheel in lengths that are manageable and easy to tow. Perfect for many half-ton trucks!



**PAGES 17-22**





## **OUTBACK *Ultra-Lite* TRAVEL TRAILER**



**2930BH BUNK ROOM**



**2930BH OUTSIDE KITCHEN**



# Outback

**2930BH SHOWN IN TEAK DECOR**



Outback Ultra-Lite's compact design comes in travel-friendly lengths and lightweight floorplans that make this travel trailer towable by many smaller vehicles. Also is loaded with many standard features not on other ultra-lite trailers\*.

\*CHECK WITH YOUR VEHICLE MANUFACTURER FOR TOWING SPECIFICATIONS



276UBH BUNK BEDS



276UBH BUNK BEDS



276UBH PANTRY/WARDROBE

# OUTBACK ULTRA-LITE TOP FEATURES



Home stereo with operating app  
(N/A in 230URS, 240URS, 250URS)



Double welded aluminum cage  
construction in walls, roof and floors.



Magnetic Door Catches are easy to  
use and will not break. One inch thick bag-  
ging doors are also standard.



32" High Definition Televisions are  
standard in most Outback Ultra-Lite models.



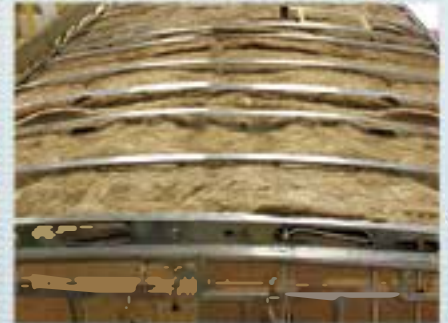
Power awning with LED strip light



No crank up Omni HDTV antenna



Enclosed underbelly



Aluminum truss roof system



8 cubic foot refrigerator



Power tongue jack



USB charging ports  
(bedroom and living area)



Frameless windows



**Outback**  
ULTRA-LITE



## ROOF

1. 8-Panels One Piece TPO Tan Colored Roof
2. Plywood Decking
3. R-14 Blanket Insulation
4. 5' Reddy Aluminum Roof Nuders
5. Full Length GSP Rail

## SIDEWALL

6. Gel-Coated Champagne Fiberglass Exterior
7. 1/8" Luan Wall Backing
8. R-7 Solid Block Foam Insulation
9. 1 3/8" Bar Welded Aluminum Frame Yields
10. Interior Decorative Wall Board
11. Diamond Plugs on Front Cap

## FLOOR

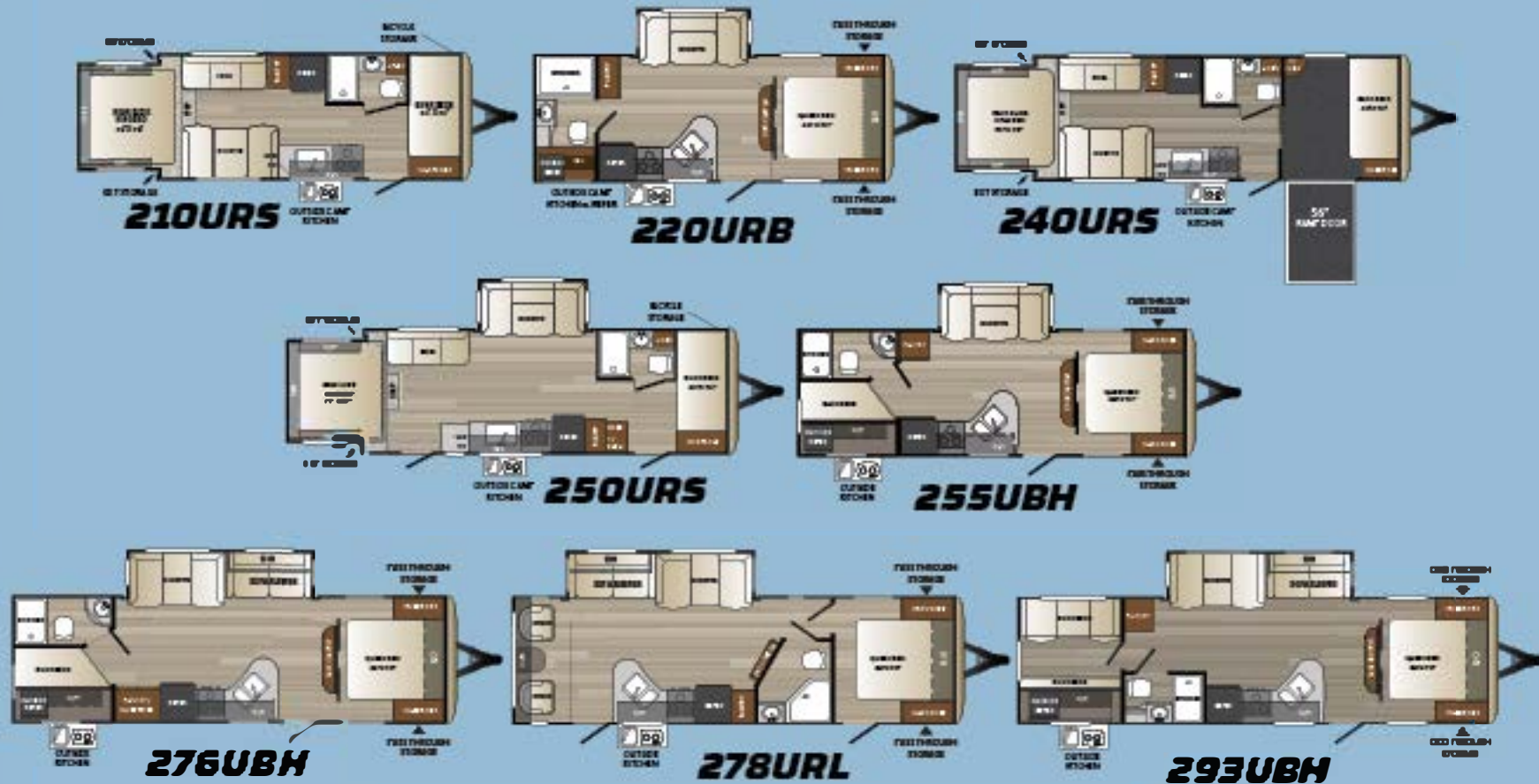
12. Residential Grade Linoleum
13. Floor Decking
14. R-30 Block Foam Insulation
15. Welded Aluminum Floor Joists
16. Bottom Layer Luan Decking
17. Casto Vapor Barrier Wrap
18. One Piece, Polypropylene Enclosed and Heated Underbelly
19. In Floor Residential Ducted Heat

## CHASSIS

20. 8" Powder Coated Steel I-Beam Frames
21. Leaf Spring Suspension System
22. EZ Lube Axles with 10" Electric Brakes
23. 3-Step Entry Mounted to I-Beam Frame
24. Step Light

OUTBACK ULTRA-LITE TRAVEL TRAILERS

**CONSTRUCTION**



# SPECIFICATIONS

|                       | 210URS | 220URB | 240URS | 250URS | 255UBH | 276UBH | 278URL | 293UBH |
|-----------------------|--------|--------|--------|--------|--------|--------|--------|--------|
| SHIPPING WEIGHT       | 4475   | 4895   | 4950   | TBD    | 5205   | 5620   | 5510   | 5915   |
| CURB WT QUOTA         | 2970   | 2705   | 2310   | TBD    | 2380   | 2055   | 2090   | 1685   |
| HITCH WEIGHT          | 445    | 540    | 460    | TBD    | 585    | 675    | 605    | 780    |
| EXTERIOR LENGTH*      | 23'    | 26'    | 28' 3" | 27' 6" | 28' 5" | 31' 4" | 31' 6" | 33' 5" |
| EXTERIOR WIDTH        | 8'     | 8'     | 8'     | 8'     | 8'     | 8'     | 8'     | 8'     |
| EXT. HEIGHT - A/C TOP | 10' 7" | 10' 7" | 10' 7" | TBD    | 10' 7" | 10' 7" | 10' 7" | 10' 7" |
| FRESH WATER (GAL.)    | 43     | 43     | 43     | 43     | 43     | 43     | 43     | 43     |
| WASTE WATER (GAL.)    | 30     | 30     | 30     | 30     | 30     | 30     | 30     | 30     |
| GRAY WATER (GAL.)     | 30     | 30     | 30     | 60     | 60     | 60     | 60     | 60     |
| LP CAPACITY (LBS.)    | 40     | 40     | 40     | 40     | 40     | 40     | 40     | 40     |
| AWNING                | 14'    | 12'    | 19'    | 19'    | 15'    | 17'    | 20'    | 18'    |





# OUTBACK ULTRA-LITE STANDARDS AND OPTIONS

## LIVING AREA

- Hard glassed cockpit compatible
- 36" flush floor seats
- Large panoramic windows
- Pro drill & drill accessories
- Carbon deck plate box release
- Wireless charging
- Large wood slide drawers with steel handles
- Large overhead cabinets
- 32" HD TV (not included)
- Pleated shades
- USB charging port
- Battery charging access
- LED lights

## KITCHEN

- Compact built-in sink with 3" drain
- 8 cu. ft. refrigerator
- High-flow faucet
- Built-in electric stove
- 12" electric cooktop
- Fully equipped sink area (not included)

## BEDROOM

- Carbon fiber bed frame
- TV hook-up
- Accessories for carbon fiber furniture
- 32" HD TV (not included)
- 16" x 20" bed
- 2 side cabinets
- 16" quality foam mattress

## BATHROOM

- Power roof vent
- 60" shower tub
- Toilet
- Carbon fiber vanity
- Large mirror

## APPLIANCES

- AM/FM/CD stereo with DVD player
- 8 cu. ft. refrigerator
- 3 burner propane stove
- 12" electric cooktop
- 13,000 BTU AC unit
- 30,000 BTU heater
- 16" quality foam mattress

## EXTERIOR STANDARDS

- Clear coat exterior fiberglass
- Frameless overhead doors
- Triple seal entry top
- Black anodized
- Extra large baggage door, 1" thick with coil bases & top and rubber D-ring seal
- Extended step & full length step rail
- Power lift/lower seat
- Hitch light
- Wheel covers
- Exterior LED lighting
- Heated exterior door handle
- LP tank cover
- Antenna
- Exterior LED lighting
- Exterior LED lighting
- Easy to be clean
- Outside camp table
- Exterior LED lighting
- 12" electric cooktop
- 16" electric stove
- 32" HD TV (not included)
- 16" quality foam mattress
- 16" quality foam mattress

## WALLS - CONSTRUCTION

- High quality exterior paint
- Solid black trim

## ROOF

- 5" galvanized steel
- One-piece TPCL roof
- RIG lid seal

## FLOOR

- 2" solid black floor
- R10 black foam insulation
- 3/16" aluminum floor
- Fully equipped sink area

## CHASSIS

- Leaf spring suspension
- 12" electric cooktop
- 16" electric stove
- 32" HD TV (not included)
- 16" quality foam mattress
- 16" quality foam mattress

## UTILITIES

- 35" HD overhead
- 2 DDC LP bottles with a lift of 2000 lbs
- On-board TV antenna
- On-board 30-amp power outlet
- LP tank detector
- Carbon monoxide detector
- Fire extinguisher
- Tinted window glass
- Braided safety lines
- Safety chains
- 16" quality foam mattress
- Carbon monoxide detector
- 30 gallon grey water capacity (max. capacity)

## ULTRA-LITE EXTERIOR GROUP\*

- Clear coat exterior fiberglass
- Frameless overhead doors
- Triple seal entry top
- Black anodized
- Extra large baggage door, 1" thick with coil bases & top and rubber D-ring seal
- Extended step & full length step rail
- Power lift/lower seat
- Hitch light
- Wheel covers
- Exterior LED lighting
- Heated exterior door handle
- LP tank cover
- Antenna
- Exterior LED lighting
- Exterior LED lighting
- Easy to be clean
- Outside camp table
- Exterior LED lighting
- 12" electric cooktop
- 16" electric stove
- 32" HD TV (not included)
- 16" quality foam mattress
- 16" quality foam mattress

## ULTRA-LITE INTERIOR GROUP\*

- AM/FM/CD/DVD Player - Bluetooth enabled
- 8 cu. ft. refrigerator
- 32" LCD HD TV (not included)
- 32" LED light bulbs
- Overhead A/C
- 12" electric cooktop
- 16" electric stove
- 32" HD TV (not included)
- 16" quality foam mattress
- 16" quality foam mattress

## OPTIONS

- 15,000 BTU AC Conditioner

\* Denotes STD Build Options

# DECOR



HEARTHSTONE



TEAK



ROSEWOOD



# OUTBACK

*Diamond Super-Lite*

# TRAVEL TRAILERS



325BH BUNK ROOM  
SHOWN IN TEAK DECOR



320RL BEDROOM SHOWN  
IN ROSEWOOD DECOR



# Outback

325BH SHOWN IN TEAK DECOR



328RL KITCHEN SHOWN IN ROSEWOOD DECOR



328RL LIVING AREA SHOWN IN ROSEWOOD DECOR



325BH OUTSIDE KITCHEN



VAULTED CEILING 7' CENTER CEILING HEIGHT ALLOWS FOR ADDED HEAD ROOM, LARGER WINDOWS AND ADDED STORAGE



ALL HIGH DEFINITION TELEVISIONS ARE STANDARD IN OUTBACK DIAMOND SUPER-LITE TRAVEL TRAILERS.

OUTBACK TRAVEL TRAILERS

# OUTBACK DIAMOND SUPER LITE TRAVEL TRAILER TOP FEATURES



Aluminum entry steps



Power stabilizer jacks



Slam Latch Garage Doors with magnetic door catches



USB Charging Ports



Stainless steel appliances (with 8 cubic foot refrigerator)



Rest-a-lounge dinette w/pull-out storage drawers



Power Tongue Jack



The Heated and Enclosed Underbelly



Painted fiberglass front cap w/stone guard and LED lights



Home stereo system with operating app



iN-Command™ Smart Automation (see details on page 25)



Rear roof ladder w/ruby wable roof



No crank Omni HDTV antenna



Wable steel truss roof system



Double welded aluminum cage construction in walls, roof and floors.

OUTBACK TRAVEL TRAILERS





## ROOF

1. Seamless One-Piece TPO Tan Colored Roof
2. 3/8" Fully Walkable Wood Decking
3. R-14 Blanket Insulation
4. 5" Radius, Galvanized Steel Roof Trusses
5. Full Length Drip Rail

## SIDEWALL

6. Gel-Coated Champagne Colored Fiberglass Exterior
7. 1/8" Luan Wall Backing
8. R-7 Solid Block Foam Insulation
9. 1 1/2" Box Welded Aluminum Frame Walls
10. Interior Decorative Wall Board
11. Painted Gel Coat Molded Fiberglass Front Cap w/ LED lights and Stone Guard

## FLOOR

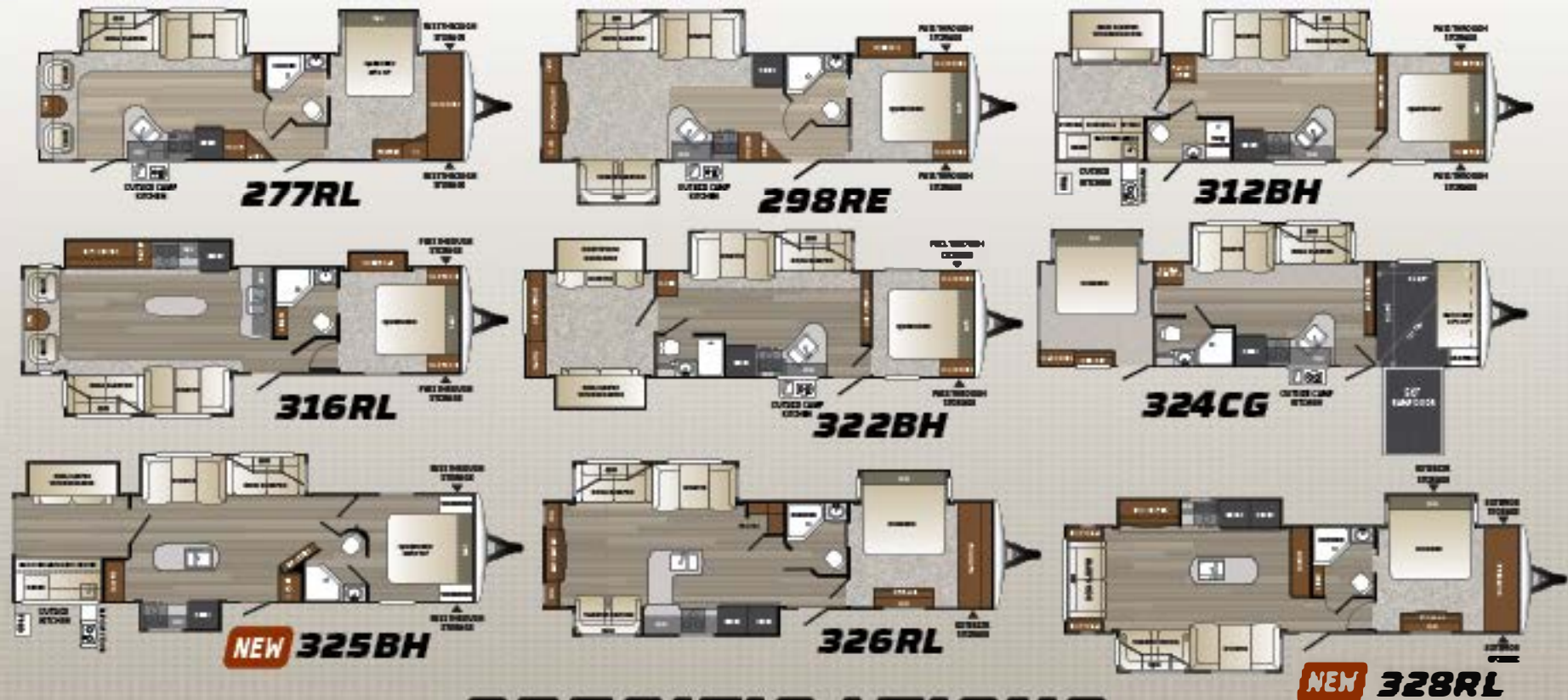
12. Residential Grade Stain Resistant Carpet and Linoleum
13. Floor Decking
14. R-10 Block Foam Insulation
15. Welded Aluminum Floor Joists
16. Bottom Layer Luan Decking
17. Duro Vapor Barrier Wrap
18. One Piece, Polypropylene Enclosed and Heated Underbelly
19. In Floor Residential Ducted Heat

## CHASSIS

20. 8" Powder Coated Steel I-Beam Frame
21. Leaf Spring Suspension System
22. EZ Lube Axles with 10" Electric Brakes
23. 15" Radial Tires
24. Aluminum Entry Steps
25. Step Light

OUTBACK TRAVEL TRAILERS

# CONSTRUCTION



# SPECIFICATIONS

|                       | 277RL   | 298RE  | 312BH  | 316RL  | 322BH   | 324CG   | 325BH  | 326RL   | 328RL  |
|-----------------------|---------|--------|--------|--------|---------|---------|--------|---------|--------|
| SHIPPING WEIGHT       | 7480    | 7556   | 7803   | 7787   | 8115    | 7720    | 8325   | 8518    | 8585   |
| CARRYING CAPACITY     | 2020    | 1944   | 1867   | 1713   | 2385    | 2780    | 2175   | 1982    | 1915   |
| HIGH WEIGHT           | 870     | 925    | 1030   | 980    | 1120    | 985     | 980    | 1175    | 1210   |
| EXTERIOR LENGTH       | 34' 10" | 35' 2" | 36'    | 35' 2" | 36' 11" | 36' 10" | 37' 5" | 36' 11" | 37' 4" |
| EXTERIOR WIDTH        | 8'      | 8'     | 8'     | 8'     | 8'      | 8'      | 8'     | 8'      | 8'     |
| EXT. HEIGHT - A/C TOP | 11' 4"  | 11' 4" | 11' 4" | 11' 4" | 11' 4"  | 11' 4"  | 11' 4" | 11' 4"  | 11' 4" |
| FRESH WATER (GAL.)    | 53      | 53     | 53     | 53     | 53      | 53      | 53     | 53      | 53     |
| WASTE WATER (GAL.)    | 34      | 34     | 34     | 34     | 34      | 34      | 34     | 34      | 38     |
| GRAY WATER (GAL.)     | 88      | 88     | 88     | 88     | 88      | 88      | 88     | 88      | 78     |
| LP CAPACITY (LBS.)    | 60      | 60     | 60     | 60     | 60      | 60      | 60     | 60      | 60     |
| AWNING                | 19'     | 18'    | 16'    | 12'    | 18'     | 16'     | 19'    | 12'     | 19'    |



# OUTBACK TRAVEL TRAILER STANDARDS AND OPTIONS

## LIVING AREA

- Upgraded furniture package
- Hard floor as opposed to carpet, durability
- Large dinette
- 30" Wash basin sink
- Large panoramic windows
- Pro-tilted and covered with rainfly
- Custom designed box storage with soft cushions
- Uplight lighting
- Large wood table covers with glass panels
- Cabaret, formal or rustic furniture
- Large overhead cabinets
- Removable table and chairs
- 30" TV
- Removable shades
- Uplight ceiling
- Floor lights (2)
- USB charging port
- LED lighting
- Bath/shower apron
- Towel rack storage
- Standard sound insulation

## KITCHEN

- 30" LP stove with 3 burners
- Wash/dish storage
- Two door 15 cu. ft. refrigerator
- High-back seat w/PU back support
- Upright bag
- 30" refrigerator unit
- Microwave
- Upgraded low back seat/cupboard
- Paper towel holder
- Blends stainless steel appliances

## BEDROOM

- Dual LED lighting mattress
- TV hook-up
- Adjustable windows for excellent ventilation
- Removable bed storage
- Deluxe headboard
- Head and foot lights
- Bedroom apron
- 2 Pulling drawers
- Accessible entry storage w/ 10 web corners (maximize space)
- USB charging port

## BATHROOM

- Porcelain unit
- 30" x 60" shower tub
- Porcelain floor tile
- 10" mirror
- Garden shower (1/4" x 31.2, 3 2/3")
- Deluxe medicine cabinet
- Large linen closet (200 lbs capacity)

## APPLIANCES

- Stainless steel
- DVD player with built-in remote control app
- Two door 15 cu. ft. refrigerator
- 30" wide upright with oven
- 12-point gas, electric and propane hook-up pass with 10.2 gallons per hour "gas if necessary"
- 12,000 BTU AC and thermostat
- 30,000 BTU furnace
- Microwave

## EXTERIOR STANDARDS

- Removable storage cap w/ LED strip lights and lock guard
- Black powder coated 16" wide safety glass windows
- Black mesh grill
- Adjustable entry grill handle
- Removable drip caps and length drip rail
- Two recovery lights (one on each side)
- Porch light
- Hitch light
- Step light
- 30" wide aluminum body
- Charter 120V refrigerator
- Heavy duty stainless steel exterior lights and valves
- LP tank cover
- Aluminum type handholds
- Deluxe stainless steel battery brackets
- Charter apron
- Entry storage
- Upright bag storage (removable)
- Charter quick connect LP hook-up
- LED Hitch lights
- Gel battery prep
- Black hitch ball with dual shock absorber
- Rear ladder
- Pass or tongue jack
- Black slide out ends
- Water draining system
- Pass or stabilizer jacks
- Aluminum entry steps

## HALLS - CONSTRUCTION

- Welded steel main frame with 5" insulation
- 3" solid block foam board insulation

## ROOF

- 3" Radi-tek, weather resistant, 100% tapered insulation on 1 1/2" insulation
- 3/8" roof decking
- 2x4s on TPQ roof (4x4)
- 2x4 blocks (insulation)

## FLOOR

- 2" x 6" aluminum laminated floor
- 2x6 blocks under insulation
- Wrapped vapor barrier
- 2x4s on TPQ roof (4x4)

## CHASSIS

- 1 inch spring equalizing suspension system
- Powder coated 1 1/2" tubes
- 10" axle assemblies
- 15" metal drum
- 15" spare tire carrier (2x2)
- Aluminum fenders

## UTILITIES

- 5 1/2" wide cassette
- 30 lbs. LP bottles with 1/2" air disconnect
- Removable hand-free 1/4" Radi-tek antenna
- 60 amp alternator (40 or 100)
- LP tank detector
- 30 lbs. de heater
- Custom mounted 60" Charter
- 30" high 15" w/ 2x4 support
- 30" wide 15" w/ 2x4 support
- Manual slide hitchup on all electric slides
- 12 volt battery disconnect
- 6V 10
- 12 volt 100
- 15" spare tire, carrier, and cover
- Aluminum fenders

## OUTBACK DESIGNER PACKAGE\*

- Customizable (personalizable)
- 10" floor
- 30" wide 15" w/ 2x4 support
- 30" wide 15" w/ 2x4 support
- 10" floor
- Removable shades
- 30" wide 15" w/ 2x4 support
- Washbasin

## OUTBACK COMFORT PACKAGE\*

- 22,500 BTU dual air conditioning
- TV hook-up/stand
- A/C/FR/AC climate control
- Microwave
- Entry handle

## OUTBACK DIAMOND PACKAGE\*

- 22,500 BTU dual air conditioning
- 10" floor
- Microwave
- 30" wide 15" w/ 2x4 support
- Power slide

## POPULAR OPTIONS

- Free check valve (320, 325)
- Second Air Conditioner
- 65,000 BTU AC/Thermostat
- Fridge (1/4" x 31.2)

\* Depends on STD Build Options

# DECOR



## HEARTHSTONE



## TEAK



## ROSEWOOD



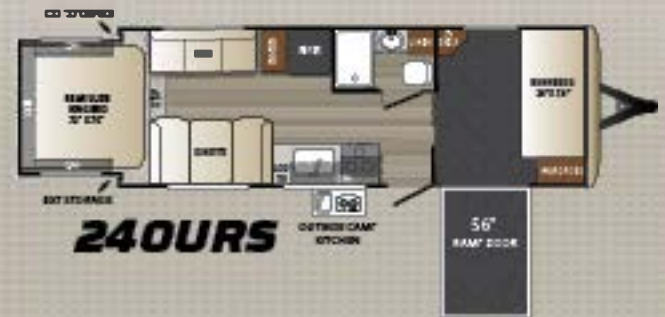
OUTBACK TRAVEL TRAILERS

# CARGO GARAGE

by Keystone

Enjoy the versatility of the 240 URS and 324 CG side load ramp trailers. They are perfect trailers to carry motorcycles, quads and golf carts. Not into toys? Consider these models for pets, mobile offices or a convenient way to transport hunting gear, swap meet items and trade show materials. Of course it can always be used as an awesome bunk room!

Available on these two travel trailer floor plans:



OUTBACK TRAVEL TRAILERS

56"





# OUTBACK *Diamond Super-Lite* FIFTH WHEELS



296FRS BATHROOM



296FRS BEDROOM WITH QUEEN SIZE BED



**Outback**

296FRS SHOWN IN ROSEWOOD DECOR

# OUTBACK

*Diamond Super-Lite*

## FIFTH WHEELS



318FBH BUNK ROOM SHOWN IN ROSEWOOD DECOR



318FBH SHOWN IN TEAK DECOR



296FR5 SHOWN IN ROSEWOOD DECOR

# OUTBACK FIFTH WHEEL TOP FEATURES



Vaulted ceiling and short profile increase head room to 6' 10" at the end of the bed.



Auto leveling system on fifth wheels.



Large Pass Through Storage compartments inside Slide Latch Bunking Doors to allow access to all of your belongings.



USB Charging Ports are conveniently located in the living area and the bedroom.



Frameless windows.



The Utility Center conveniently located your unit controls in an easily accessible location.



The Heated and Enclosed Underbody extends the camping season and provides better tow ability.



Home stereo system with operating app.



Tri-fold Sleeper Sofas are easy to set up, require no electrical service and provide comfortable nights rest.



Rearview mirror.



No-drink essential TV antenna.



Walkable steel truss roof system.



**Outback**  
Diamond Super 5th

**ROOF**

- 1. Seamless One-Piece TPO Tan Colored Roof
- 2. 3/8" Fiberglass Wood Decking
- 3. 51 Pound Galvanized Steel Roof Underlayment
- 4. 1/8" Fiberglass Sides

**SIDEWALL**

- 5. Metal Backing EGG Strips
- 6. Aerodynamic Radius High Glass Front Fiberglass Cap w/FRCH Vision
- 7. R18 Fiberglass Insulation End Walls
- 8. Box Welded Aluminum Sides and End Walls
- 9. Sealed Radius Window Inserts
- 10. R18 Bolted Black Foam Insulation
- 11. 1/8" Luxe Wood Decking
- 12. Gel Coated Charcoal Fiberglass Sides

**FLOOR**

- 13. High Density Residential Carpet w/ Stain Resistance
- 14. Residential Grade Aluminum
- 15. Laminated Floor Overlay
- 16. Residential In Floor Rigid Insulation
- 17. High Density Black Foam Insulation
- 18. Welded Box Frame Aluminum Floor Joists
- 19. Dens Wrap Vapor Barrier

**CHASSIS**

- 20. 8" to 16" Powder Coated Steel Chassis Frame
- 21. One Piece Polyurethane Enclosed and Heated Underbelly
- 22. 15" Reducer with Electric Brakes
- 23. EZ Lube Axles
- 24. Leaf Spring Suspension System
- 25. Entry Step Light

OUTBACK FIFTH WHEELS  
**CONSTRUCTION**



**286FRL**



**296FR5**



**315FRE**



**NEW 318FBH**

## SPECIFICATIONS

|                      | 286FRL | 296FRE | 315FRE | 318FBH |
|----------------------|--------|--------|--------|--------|
| SHIPPING WEIGHT      | 8550   | 8577   | 8738   | 8975   |
| CARRYING CAPACITY    | 2450   | 2423   | 2262   | 2025   |
| HITCH WEIGHT         | 1685   | 1715   | 1675   | 1785   |
| EXTERIOR LENGTH      | 33'    | 32' 6" | 36' 6" | 33' 5" |
| EXTERIOR WIDTH       | 8'     | 8'     | 8'     | 8'     |
| EXT. HEIGHT - A/CTOP | 13' 1" | 13' 1" | 13' 1" | 11' 4" |
| FRESH WATER (GAL.)   | 96     | 96     | 96     | 96     |
| WASTE WATER (GAL.)   | 34     | 34     | 34     | 76     |
| GRAY WATER (GAL.)    | 34     | 68     | 68     | 76     |
| LP CAPACITY - LBS.   | 60     | 60     | 60     | 60     |
| AWNING               | 15'    | 15'    | 15'    | 19'    |



# OUTBACK FIFTH WHEEL STANDARDS AND OPTIONS

## LIVING AREA

- Upgraded furniture package
- Hand-glazed granite maple cabinetry
- Free-standing d-better (N/A 3187BH)
- 36" Birch floor slides
- Large panoramic windows
- Pre-installed and covered cabinetry
- Custom end panel box cabinet with soft-close
- Lockdown flooring
- Light wood sideboards with steel pulls
- Warm oak, white oak and fabric
- 1 mg overhead cabinets
- Removable table/desk per side
- HDTV
- Marine interior
- Overhead wall lights
- Ventilated ceiling
- Floor lights (2)
- USB charging port
- LED lighting
- Bath and ceiling exhaust
- Bath and ceiling exhaust
- Home stereo system with speaker app
- 110V/120V/240V/208V/200V

## KITCHEN

- Deep double bowl sink with 3" drain
- Fresh water storage
- 30" oven with 4 burners
- Microwave
- Under sink
- 3-burner cooktop
- Microwave
- Upgraded laminate countertop
- Paper towel holder
- Stainless steel appliances

## BEDROOM

- Deluxe bedding/covers
- TV hook-up
- Adjustable bed for each side
- A/C unit bed room
- Overhead storage
- Head and toe lights
- Bedroom speakers
- 2 Full length wardrobes
- USB charging port

## BATHROOM

- Power roof vent
- Skylight over tub
- Porcelain toilet seat bidet
- Tub surround
- 6 shower doors
- Deluxe medicine cabinet
- Large linen closet (front loading)

## APPLIANCES

- DVD player with surround sound control app (not available)
- Two door 8 cu. ft. refrigerator
- 2-burner cooktop
- 20 gallon gray/black 0.5 water heater
- 12,000 BTU AC wall thermostat
- 30,000 BTU furnace
- Microwave

## EXTENSION STANDARDS

- 12V LED lighting (not available)
- Black framed third window
- Black tank tank
- Food entry grab handle
- Extended deep caps and full length cap rail
- Two courtesy lights (one on each side)
- Porch light
- Hatch light
- Step light
- Water-resistant body trim
- Interior 120V receptacle
- Ventilated overhead water tank
- LP tank cover
- An in-cabinet 4 lb. propane detector
- Interior speakers
- 2 cup holders
- Interior quick connect LP hook-up
- Stabilizer jacks (2)
- LED night lights
- Sewer pump
- Slide to tub D-ledge door w/legends door holders
- Rear level jacks
- Black door and cabinets
- High flow waterless charge pump
- 4 point level system
- Overhead storage

## WALLS - CONSTRUCTION

- Welded aluminum walls with R7 insulation
- Solid block foam insulation

## ROOF

- 5" Insul-X, coated galvanized steel
- Layered trusses on 16" centers
- 3/8" roof decking
- Chlorophane TPO roof (tan)
- R14 thermal insulation

## FLOOR

- 2" solid aluminum laminated floor
- R10 block foam insulation
- Wrapped supports
- Polypropylene wood grain based underlayment

## CHASSIS

- Leaf spring suspension system
- Powder coated frame
- 30" axle to axle
- 15" solid disc
- 15" square tire, center & cover
- Aluminum rim

## UTILITIES

- 60-amp converter
- 30 lbs. LP bottles with auto changeover
- On-board propane heater
- LP tank cover
- Sewer cassette
- Carbon monoxide detector
- Pro and eye bar
- Tilted utility door
- Breakaway hitch
- Safety chains
- Manual slide to lock on all slides
- 12V battery disconnect
- Carbon monoxide detector
- RVB
- Radial Tire
- 15" square tire, center, and cover
- Aluminum rim
- 60 amp service, wired and bonded to ground A/C
- Propane

## OUTBACK DESIGNER PACKAGE\*

- Coat hooks (not available)
- Wheel rack
- Memory foam mattress
- Linen closet
- Plaid shades
- Overhead wall lights
- 15" disc

## OUTBACK COMFORT PACKAGE\*

- 12,000 BTU ducted air conditioner
- TV antenna/cable/DVD/CD stereo with surround
- Mirror vanity
- Entry handle
- Freezer/dishwasher (not available)

## OUTBACK DIAMOND PACKAGE\*

- Champagne color leather floor
- Propane detector
- A/C LED lights
- Theater seating (N/A 3187BH)
- Solid outside shower cap w/automatic cover

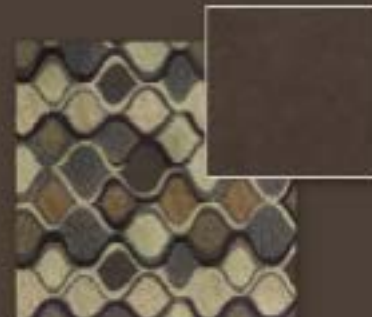
## POPULAR OPTIONS

- Second A/C unit (not available)
- 18,000 BTU air conditioner

\* Denotes STD Build Options



# DECOR



HEARTHSTONE

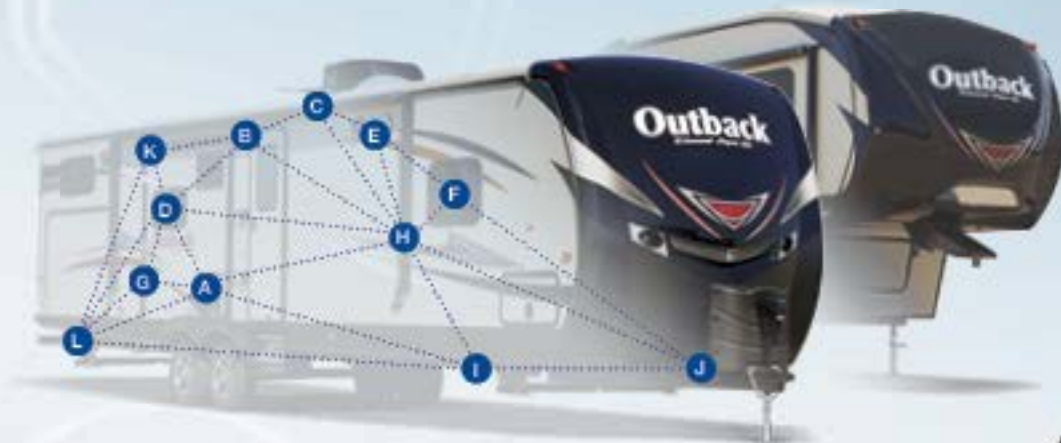


TEAK



ROSEWOOD

# Relax. You're iN-Command™



- Never lose your controls
- Multiple Users
- When you have your phone, you're iN-Command.

## Monitor and Control Functions

The iN-Command™ system gives you total control over your Keystone RV's functions and features like never before.

- A Turn on and off the water pump and water heater. This system enables you to select between electric or propane fuel sources, or both.
- B Turn on and off exterior lights.
- C Turn on and off awning lights.
- D Turn on and off interior lights.
- E Turn on and off security lights.
- F Control customized lighting zones such as main, center, mood, and night lights; even "All on, all off!"
- G Extend and retract slide room(s).
- H Extend and retract patio awning(s).
- I Monitor status of your fresh, gray and black water holding tanks.
- J Check your battery status.
- K Rename your slide rooms and lighting groups to any name you choose to make it easy to remember.
- L Raise and lower electric jacks.

iN-Command is not available on Outback Ultra-Lite travel trailers.

*Slightly  
Command*

Control • Systems Monitoring • Safety

## FINALLY A SYSTEM YOU CAN TRUST.

iN-Command™ by JENSEN embraces the next generation of controls for your Keystone RV by acting as the central hub of operations and puts you at the helm using your preferred smart device. But how does this all-encompassing system work? Well, easily, does it monitor and control? Let's take a closer look at iN-Command piece by piece.

The Display Command is your primary point of contact with iN-Command. All of the controls and monitoring panels that have cluttered up interior walls in the past are integrated into this one sleek, touch screen monitor. What really makes the Display Command stand out, however, is that it can be controlled remotely with a smart device using the free JENSEN iN-Command mobile app. This app performs all of the same functions as the Display Command, but from the convenience of your mobile device.



**iN-Command**  
CONTROL YOUR RV



Download and install the free **JENSEN iN-Command™ App** from Google Play or Apple App Store for the ultimate in control.



TOWABLE INDUSTRY FIRST

## Wired for Performance

Keystone's Exclusive Unified Wiring Standard

iN-Command utilizes the new Keystone Unified Wiring Standard. Color-coded and numbered, each circuit in your coach can instantly be identified, simplifying diagnostics, troubleshooting and service.

Keystone has implemented this Unified Wiring Standard across ALL Indiana-built brands and is the first towable manufacturer to do so.





# Outback

[www.keystonerv.com/Outback](http://www.keystonerv.com/Outback)

*Designed for a Lifetime of RVing*



**YOUR LOCAL OUTBACK DEALER:**

Colton RV  
 North Tonawanda, NY 14120  
 (716) 694-0188  
 (800) 628-4889  
[www.ColtonRV.com](http://www.ColtonRV.com)

Colton RV  
 Orchard Park, NY 14127  
 (716) 957-3250  
 (800) 628-4889  
[www.ColtonRV.com](http://www.ColtonRV.com)

Colton RV  
 489 Bushkill Plaza LN #9665  
 Wind Gap, PA 18091  
 (610) 863-5239  
[www.ColtonRV.com](http://www.ColtonRV.com)

2842 Hoagberry Drive  
 PO Box 2000  
 Gothen, IN 46527-2000  
 (574) 535-2100



[www.keystonerv.com](http://www.keystonerv.com)

This advertisement is as accurate as possible as of the date of publication of this brochure. Features, specifications and prices are subject to change without notice. Please contact your local dealer or visit our website at [www.keystonerv.com](http://www.keystonerv.com) for more current product information and specifications. Use the Vehicle Option or CAUTION. Owners of Keystone recreational vehicles are solely responsible for the selection and proper use of tow vehicles. All customers should consult with a motor vehicle manufacturer or their dealer concerning the purchase and use of suitable tow vehicles for Keystone products. Keystone disclaims any liability or damages suffered as a result of the selection operation use or misuse of a tow vehicle. KEYSTONE LIMITED WARRANTY DOES NOT COVER DAMAGE TO THE PATENTED TOW VEHICLE OR THE TOW VEHICLE AS A RESULT OF THE SELECTION, OPERATION, USE OR MISUSE OF THE TOW VEHICLE. DECEMBER 2015