

PRIME TIME
Manufacturing



Your Journey Begins Here





For both the first-time buyer and seasoned camping veteran, the value-conscious Avenger often represents a customer's first experience with a recreational vehicle from Prime Time Manufacturing. Since first impressions are critical - and last a lifetime - we've insisted that Avenger combine comfort, convenience, and style with the industry's highest standard of quality and construction. By providing a GREAT ownership experience, Avenger is Prime Time's way of welcoming you to our family. We hope that your future journeys will always include a Prime Time RV.





To guarantee that Avenger provides true customer satisfaction, our engineers carefully examined every component, every small detail, and every process that went into Avenger's creation. It was important to offer industry-leading beauty, so shaker-style cabinet doors were paired with premium fabrics, flooring, and countertops for a luxurious appearance. "Best In Class" features and design elements are utilized to fully maximize customer enjoyment. Innovative EVERLAST® construction and demanding standards for testing were developed to ensure long-term quality and durability. If "Your Journey Begins Here," Avenger is sure to please.



AVENGER FLOORPLANS & SPECIFICATIONS



26BH



28RKS



28RLS



30QBS



31DBS



31RKD



32BIT



32DEN

New



32FBI



32QBI



33RCI



34DQB



SPECIFICATIONS	26BH	28RKS	28RLS	30QBS	31DBS	31RKD	32BIT	32DEN	32FBI	32QBI	33RCI	34DQB
LENGTH	28' 11"	34' 4"	33' 6"	33' 11"	35' 9"	36' 6"	37' 8"	37' 8"	34' 4"	37' 11"	35' 11.5"	37' 10"
HEIGHT	10' 7"	11' 2"	11' 2"	11' 2"	11' 2"	11' 4"	11' 4"	11' 4"	11' 4"	11' 4"	11' 4"	11' 4"
HITCH WEIGHT	580 lb.	680 lb.	695 lb.	885 lb.	789 lb.	928 lb.	871 lb.	858 lb.	680 lb.	1,000 lb.	938 lb.	922 lb.
UNLOADED VEHICLE WEIGHT (UVW)	4,850 lb.	6,789 lb.	6,938 lb.	7,113 lb.	7,189 lb.	8,159 lb.	8,393 lb.	7,989 lb.	8,460 lb.	9,029 lb.	7,976 lb.	8,334 lb.
CARGO CARRYING CAPACITY (CCC)	2,692 lb.	2,691 lb.	2,557 lb.	2,534 lb.	2,400 lb.	3,169 lb.	2,840 lb.	3,069 lb.	2,885 lb.	2,371 lb.	3,324 lb.	3,037 lb.



UVW (Unloaded Vehicle Weight)* is the typical weight of the unit as manufactured at the factory. It includes all weight at the unit's axle(s) and tongue or pin and LP Gas. The UVW does not include cargo, fresh potable water, additional optional equipment or dealer installed accessories. *Estimated Average based on standard build optional equipment.

CCC (Cargo Carrying Capacity)** is the amount of weight available for fresh potable water, cargo, additional optional equipment and accessories. CCC is equal to GVWR minus UVW. Available CCC should accommodate fresh potable water (8.3 lbs per gallon). Before filling the fresh water tank, empty the black and gray tanks to provide for more cargo capacity. ** Estimated average based on standard build optional equipment. See back page for additional specification definitions.

SPECIFICATIONS	20RD	21RB	21RBS	24BHS	26BB	26BBS	26BK	27DBS	27RBS	27RKS	29RBS	30MKB
LENGTH	24' 11"	26' 9"	27' 7"	28' 2"	28' 11"	30' 5"	28' 11"	32' 11.5"	32' 11"	32' 11"	33' 5"	35' 8"
HEIGHT	10' 3"	10' 3"	10' 8"	10' 8"	10' 3"	10' 8"	10' 3"	10' 8"	10' 8"	10' 8"	10' 8"	10' 8"
HITCH WEIGHT	510 lb.	587 lb.	790 lb.	753 lb.	552 lb.	658 lb.	474 lb.	721 lb.	765 lb.	681 lb.	821 lb.	732 lb.
UNLOADED VEHICLE WEIGHT (UVW)	4,256 lb.	4,499 lb.	5,294 lb.	5,416 lb.	4,680 lb.	5,626 lb.	4,680 lb.	6,652 lb.	6,663 lb.	6,586 lb.	6,506 lb.	7,340 lb.
CARGO CARRYING CAPACITY (CCC)	3,326 lb.	3,050 lb.	2,496 lb.	2,337 lb.	2,834 lb.	2,032 lb.	2,834 lb.	2,869 lb.	2,902 lb.	2,895 lb.	3,115 lb.	2,192 lb.

AVENGER STANDARDS & OPTIONS

AVENGER ADVANTAGE PACKAGE*

- Exclusive EVERLAST® Construction
- 2" Wall Construction on 16" Centers
- Cross-Banded Construction
- 5/8" Seamless Floor Decking up to 24' with 25-year Warranty
- 7" LVL Headers Above Slideouts
- 18GPH DSI Water Heater
- Dexter E-Z Lube Axles
- Exterior Hot/Cold Shower
- Fully Enclosed Underbelly
- LED Lit Power Awning
- Solar Prep
- Backup Camera Prep
- Electric Stabilizer Jacks
- Electric Tongue Jack
- Extra Large Grab Handle
- LED Interior Lighting
- Large Double Door Refrigerator
- Restaurant Style Kitchen Faucet
- LED Lit Kitchen Backsplash
- Flush Mount Glass Top Range Cover
- Ducted A/C
- Bluetooth Stereo/DVD Player

CONSTRUCTION

- Exclusive EVERLAST® Construction
- 2" Wall Construction on 16" Centers
- Cross-Banded Construction
- 5/8" Seamless Floor Decking up to 24' with 25-year Warranty
- 7" LVL Headers Above Slideouts
- Powder Coated I-Beam Frame
- Full Length Outriggers on Frame
- Dexter E-Z Lube Axles

- 8' Exterior Width
- Aluminum Exterior Skin
- R-7 Insulation Throughout
- 2x3 Floor Joists on 16" Centers
- 5" Snow Load Roof Rafters on 16" Centers
- Walk-On Roof with 3/8" Roof Decking
- One-Piece TPO Roof
- PEX Plumbing System
- Upgraded Oetiker Water Line Fittings
- Fully Enclosed Underbelly

BEDROOM

- Quilted Residential Bed Spread
- Bedroom TV Cable Connection
- Dual Shirt Closets
- Massive Under-Bed Storage
- Extra Large Overhead Cabinets Above Bed
- Bedside 110V Power Outlets (2)

INTERIOR FEATURES

- Oversized MAX Slide (N/A 26BH)
- Ducted A/C
- Seamless Carefree Congoleum Flooring
- Massive 87" U-Shape Dinette on MAX Slide Models
- Deep Overhead Cabinets in MAX Slide
- Fully Vented Windows in MAX Slide
- Pleated Shades in Living and Dining Room (N/A 26BH)
- Mini Blinds in Living and Dining Room - 26BH
- Predrilled and Screwed Cabinetry
- Extended Ball Bearing Drawer Glides

- Jackknife Sofa with LED Cupholders and USB Ports (N/A 26BH)
- Residential Grade Carpet in Select Areas
- 82" Interior Ceiling Height
- LED Interior Lighting
- LED TV

EXTERIOR FEATURES

- Aerodynamic Front Radius
- Extended Drip Spouts
- Black Framed Radius Windows with Deep Tint
- DOT Approved Safety Glass Windows
- Fully Vented Windows Throughout
- Dual LP Bottles
- City Water Fill
- Gravity Fresh Tank Fill
- Diamond Plate Rock Guard
- Exterior Shower
- Radial Tires
- Marine Grade Outdoor Speakers
- Radius Entrance Door with Window
- Bumper with Sewer Hose Storage and End Caps
- Extra-Large Entry Door Grab Handle
- Outdoor Kitchen (30QBS, 31DBS, 31RKD, 32BIT, 32FBI, 33RCI, 32QBI)
- Solar Prep
- Black Tank Flush
- Exterior TV Bracket
- LED Lit Power Awning
- Backup Camera Prep
- Electric Stabilizer Jacks
- Electric Tongue Jacks
- Spare Tire

APPLIANCES and EQUIPMENT

- Bluetooth Stereo/DVD Player
- Exterior TV Coax Connection
- Cable TV Hook-Up With RG6 Coax
- Digital TV Antenna With Signal Booster
- 13,500 BTU Air Conditioner
- 3 Burner Range with High Output Front Burner
- Large Double Door Refrigerator
- Large 17" Oven
- Range Hood With Light And Exhaust Fan
- Quick Recovery DSI Gas Water Heater
- Water Heater Bypass
- 30K BTU Furnace (N/A 26BH - 25K BTU)
- In Floor Ducted Heat
- Auto Ignition Furnace with Wall Thermostat
- Systems Monitor Panel
- 12V Electrical System with 55 AMP Power Converter
- 110V GFCI Protected
- 12V High Capacity Water Pump
- 30 AMP Power

KITCHEN

- Pot and Pan Drawer Under Stove
- Pot and Pan Drawer Under Refrigerator
- Deep Basin Sink
- Restaurant Style Kitchen Faucet
- LED Lit Kitchen Backsplash
- Flush Mount Glass Top Range Cover

BATHROOM

- Tub Surround
- Shower Curtain with Curved Track
- Glass Neo-Angle Shower (Select Models)
- 12V Power Vent Fan
- Medicine Cabinet with Mirror
- Skylight Over Tub/Shower

SAFETY EQUIPMENT OWNER PROTECTION

- CO Detector
- LP Detector
- Fire Extinguisher
- Leak-Guard Assurance Process
- Smoke Alarm

THERMAL PACKAGE PLUS

- Enclosed Underbelly
- Heated Holding Tanks
- Extended Seasonal Enjoyment

OPTIONS

- 15K BTU A/C
- Sleep-N-Play (32BIT, 32QBI ONLY - in place of Dinette in Bunkroom)
- Free Standing Dinette and 4 Chairs (33RCI, 31RKD MANDATORY, N/A 26BH, 32DEN)
- 50 AMP Service, Wired and Framed for Second A/C (N/A 26BH)

TANK CAPACITY

- FRESH WATER: 48 Gallons
- GREY WATER: 30 Gallons**
- BLACK WATER: 30 Gallons**

*Mandatory **Some models vary. See website for additional details.

AVENGER ATI STANDARDS & OPTIONS

AVENGER ADVANTAGE PACKAGE*

- Exclusive EVERLAST® Construction
- 2" Wall Construction on 16" Centers
- Cross-Banded Construction
- 5/8" Seamless Floor Decking up to 24' with 25-year Warranty
- 7" LVL Headers Above Slideouts
- Quick Recovery DSI Water Heater
- Dexter E-Z Lube Axles
- Radial Tires
- Exterior Hot/Cold Shower
- Outside Speakers
- LED Lit Power Awning
- Solar Prep
- Backup Camera Prep
- LED Interior Lighting
- Large Double Door Refrigerator
- Large 17" Oven
- Restaurant Style Kitchen Faucet
- LED Lit Kitchen Backsplash

CONSTRUCTION

- Exclusive EVERLAST® Construction
- 2" Wall Construction on 16" Centers
- Cross-Banded Construction
- 5/8" Seamless Floor Decking up to 24' with 25-year Warranty
- 7" LVL Headers Above Slideouts

- Powder Coated I-Beam Frame
- Full Length Outriggers on Frame
- Dexter E-Z Lube Axles
- Aluminum Exterior Skin
- R-7 Insulation Throughout
- 2x3 Floor Joists on 16" Centers
- 7" LVL Header Above Slide Outs
- 5" Snow Load Roof Rafters on 16" Centers
- Walk-On Roof with 3/8" Roof Decking
- One-Piece TPO Roof
- PEX Plumbing System
- Upgraded Oetiker Water Line Fittings

BEDROOM

- Quilted Residential Bed Spread
- TV Cable Connection
- Dual Shirt Closets
- Massive Under-Bed Storage
- Bedside 110V Power Outlets (2)
- Extra Large Overhead Cabinets Above Bed

INTERIOR FEATURES

- Mini Blinds Throughout
- Extended Ball Bearing Drawer Guides
- Predrilled and Screwed Cabinetry
- 50" TV Standard on 27DBS, 27RKS,

27RBS, 29RBS, and 30MKB

- 78" Interior Ceiling Height
- LED Interior Lighting
- Seamless Carefree Congoleum Flooring

EXTERIOR FEATURES

- 8' Exterior Width
- Exterior Shower
- 4 Stabilizer Jacks
- Extended Drip Spouts
- Black Framed Radius Windows with Deep Tint
- DOT Approved Safety Glass Windows
- Fully Vented Windows Throughout
- Dual LP Bottles
- City Water Fill
- Gravity Fresh Tank Fill
- Diamond Plate Rock Guard
- Radius Entrance Door with Window
- Solar Prep
- Outdoor Kitchen (24BHS, 26BK, 27DBS, 27RBS, 29RBS)
- LED Lit Power Awning
- Spare Tire

APPLIANCES and EQUIPMENT

- Cable TV Hook-Up With RG6 Coax
- Digital TV Antenna With Signal Booster
- AM/FM/CD Radio
- 13,500 BTU Air Conditioner
- Large 17" Oven
- 3 Burner Range With High Output Front Burner
- Range Hood With Light And Exhaust Fan
- Large Double Door Refrigerator
- Quick Recovery DSI Gas Water Heater
- Water Heater Bypass
- 25K BTU Furnace (N/A 29RBS, 30MKB - 30K BTU)
- EZ Winterization Hookup
- Auto Ignition Furnace with Wall Thermostat
- Systems Monitor Panel
- 110V GFCI Protected
- 12V High Capacity Water Pump
- 30 AMP Power
- 12V Electrical System with 55 AMP Power Converter

KITCHEN

- Deep Basin Sink
- Restaurant Style Kitchen Faucet
- LED Lit Kitchen Backsplash

BATHROOM

- Shower Curtain with Curved Track
- Medicine Cabinet with Mirror

SAFETY EQUIPMENT OWNER PROTECTION

- CO Detector
- LP Detector
- Fire Extinguisher
- Smoke Alarm
- Leak-Guard Assurance Process

OPTIONS

- Free Standing Dinette & 4 Chairs (N/A 20RD, 21RB, 26BB, 26BK)
- 15K A/C (N/A 20RD, 21RB, 26BB, 26BK)

TANK CAPACITY

- FRESH WATER: 48 Gallons
- GREY WATER: 30 Gallons**
- BLACK WATER: 30 Gallons**

*Mandatory **Some models vary. See website for additional details.

HIGH-IMPACT FEATURES



ENCLOSED UNDERBELLY
(N/A ATI)



ELECTRIC STABILIZER JACKS
(N/A ATI)



ELECTRIC TONGUE JACK
(N/A ATI)



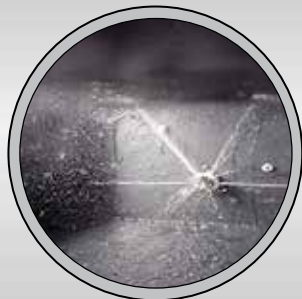
LED LIT POWER AWNING



BACK UP CAMERA PREP



SOLAR PREP



BLACK TANK FLUSH



OUTSIDE SPEAKERS



OUTSIDE SHOWER



18 GPH DSI WATER HEATER



LED INTERIOR LIGHTING



FLUSH MOUNT GLASS TOP RANGE COVER
(N/A ATI)



RESTAURANT STYLE KITCHEN FAUCET



LED LIT KITCHEN BACKSPLASH



BLUETOOTH STEREO/DVD PLAYER
(N/A 20RD, 21RB, 26BB, 26BK)

DSI QUALITY CIRCLE AWARD

Prime Time Manufacturing is proud to be recognized as an industry leader in value, reliability, and overall quality by the Recreational Vehicle Dealers Association. We are committed to "A Higher Standard" in design, construction, testing, and customer service. Check us out — we know you'll be impressed!



Seek-A-Leak Pressure Test



65 Point Secondary PDI



Seal Tech Air Pressure Test



Web Based Customer Service



Advanced Engineering



Executive Quality Audits



Rain Bay

Download the Prime Time Manufacturing mobile app or visit our dynamic online manual to enhance your ownership experience. These interactive options provide incredible ease and insight into use, maintenance and enjoyment of your Prime Time Manufacturing product. From "How-To" videos, pictures and illustrations of various components, systems and features, to fully searchable content and downloadable PDFs for individual component owner's manuals, answers are always just a click away.



View the online manual at <http://www.primetimerv.com/OnlineManual.aspx> or download our FREE app from the App Store or Google Play!

All information contained in this brochure is believed to be accurate at the time of publication. However, during the model year, it may be necessary to make revisions and Forest River, Inc., reserves the right to make all such changes without notice, including prices, colors, materials, equipment and specifications as well as the addition of new models and the discontinuance of models shown in this brochure. Therefore, please consult with your Forest River, Inc., dealer and confirm the existence of any materials, design or specifications that are material to your purchase decision.

©2017 Prime Time Manufacturing, a Division Of Forest River, Inc., a Berkshire Hathaway Company. All Rights Reserved.



Learn More
Scan this barcode using a QR Reader on your smart phone to learn more about Forest River.



A Berkshire Hathaway company.



FROG™ the Forest River Owners' Group!

CUSTOMER SATISFACTION



www.ForestRiverBuyLocal.com

ADDITIONAL SPECIFICATIONS:

GVWR (Gross Vehicle Weight Rating) - is the maximum permissible weight of the unit when fully loaded. It includes all weights, inclusive of all fluids, cargo, optional equipment and accessories. For safety and product performance do NOT exceed the GVWR.

GAWR (Gross Axle Weight Rating) is the maximum permissible weight, including cargo, fluids, optional equipment and accessories that can be safely supported by a combination of all axles.

Each Forest River RV is weighed at the manufacturing facility prior to shipping. A label identifying the unloaded vehicle weight of the actual unit and the cargo carrying capacity is applied to every Forest River RV prior to leaving our facilities. The load capacity of your unit is designated by weight, not by volume, so you cannot necessarily use all available space when loading your unit.

www.primetimerv.com
PO Box 330 • 55470 CR 1 • Elkhart, IN 46515



FREE MEMBERSHIP
to Forest River Owners' Group

www.forestriverfrog.com



24/7 EMERGENCY ROADSIDE ASSISTANCE

For a worry-free ownership experience Forest River includes one year of Coach-Net RV Technical & Roadside Assistance with each RV purchase. Whether new to the RV lifestyle or an experienced RV enthusiast, Forest River owners have 24/7 access to technical, operational and emergency road service coverage throughout the US & Canada. Coach-Net's fast, dependable service is just a phone call away.

Coach-Net®
RV Technical & Roadside Assistance



PRE-DELIVERY INSPECTION FACILITY

20,000 square feet of quality assurance. The bare essentials for a premium product. This state-of-the-art facility gives immediate daily feedback to production for quality assurance in every unit built.

Colton RV
North Tonawanda, NY 14120
(716) 694-0188
(800) 628-4889
www.ColtonRV.com

Colton RV
Orchard Park, NY 14127
(716) 957-3250
(800) 628-4889
www.ColtonRV.com

DEALER