

# Georgetown



A BERKSHIRE HATHAWAY COMPANY



**378 XL with Thunder interior**



**350 Exterior with Midnight full body paint**

**With the Georgetown XL it's about choices. To compliment our six floor plans, we have an abundance of other options. These include six exterior options, numerous interior decors and a variety of choices you can make to personalize your unit.**

**The XL model 378 (pictured in Thunder with the Onyx countertop) is a unit that offers you luxurious living. With a flatscreen TV, fireplace and abundant seating the salon area is great for relaxing conversation or catching up on your favorite shows. The free standing dinette is a great way to enjoy a delicious meal prepared in the 378's gourmet kitchen.**



**378 XL Kitchen with Onyx countertop**



**378 Bedroom**



**360 Master bath**

**The innovative spatial design of the Georgetown XL 378 offers the choice of wide open spaces or total privacy.**

**The galley is situated behind the living area in the classic triangle shape, providing the owners a chance to interact with guests or watch TV while preparing refreshments in the fully equipped kitchen. The kitchen is designed to be extremely functional and stylish with it's high end appliances, professionally designed layout and upscale touches like the hand laid tile backsplash.**

**Round out this great model with a professionally designed bedroom featuring numerous storage areas and a standard 32" LCD/HD TV.**

**Georgetown gives you a true home on the road.**



**Fire Mist Full Body Paint**



**377 XL with optional porcelain tile**

Georgetown XL by Forest River equips you with everything for your travels except the destination. With six thoughtfully designed floor plans to choose from, the engineering and interior design team have carefully constructed each of the floor plans to flow effortlessly, bringing you maximum comfort and enjoyment.

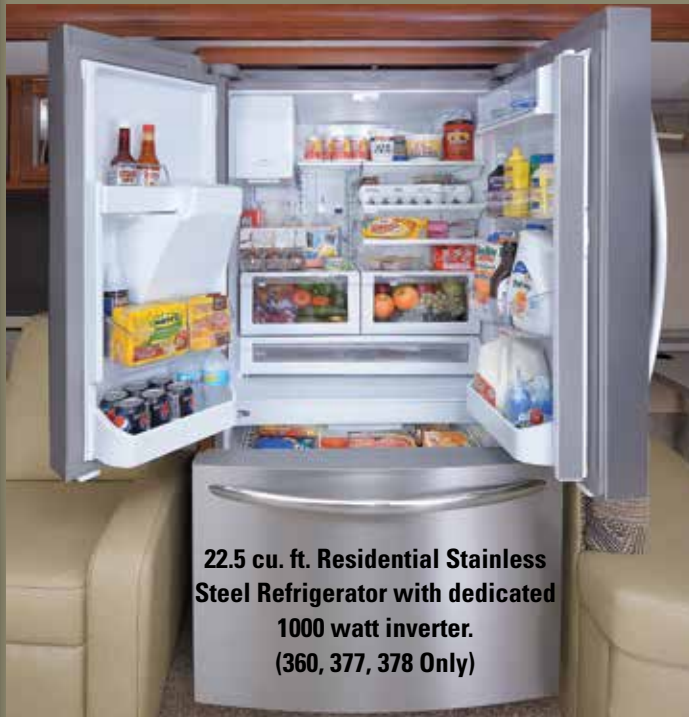
The Georgetown XL model 377 (pictured with the Caramel countertop) is the epitome of true comfort on the road. The salon area is wide open and inviting, a fireplace, a 40" LCD/HD TV and plenty of room to stretch out.

The kitchen features a 30" over the range microwave oven, solid surface countertops, stainless steel appliances, three burners and 22" oven with flush solid surface covers, a countertop extension and abundant cabinet storage.

The Georgetown XL incorporates a new dynamic front cap with a panoramic view second to none. Add in a stunning paint package and you have the most distinctive gas coach in the marketplace. 84" Interior headroom, and beds 80" in length are other standard features on the XL.



377 XL



22.5 cu. ft. Residential Stainless Steel Refrigerator with dedicated 1000 watt inverter. (360, 377, 378 Only)



377 Exterior with Parfait Full Body Paint



377 Bath storage

# Georgetown XL

## DECOR OPTIONS

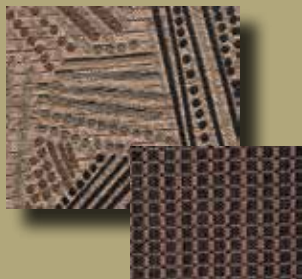
**Khaki**



**Shadow**



**Latte**



**Thunder**



**Hartford Cherry**



## XL COUNTERTOP OPTIONS BY LG



**CARAMEL**



**ONYX**

## FULL BODY PAINT OPTIONS



**PARFAIT**



**ESPRESSO**



**MIDNIGHT**



**FIRE MIST**



**CREME BRULEE**



# STANDARDS AND OPTIONS

## EXTERIOR

- Seamless Wrap Over Laminated Fiberglass Roof
- Full Body paint with Double Clear Coat and Diamond Shield
- Side-Hinge Insulated Baggage Doors
- Rotocast One-Piece Storage Compartments
- Color Side Cameras
- Cable TV and Phone Jacks
- One-Piece Windshield
- LED Clearance and Tailights
- 2 Coach Batteries
- Heated Remote Mirrors
- Triple Entrance Step – Electric
- Hitch 5000 LB.
- Automatic Hydraulic Leveling Jacks
- Rear Ladder
- Mud Flaps
- Outside Shower
- Slideout Room Awning(s)
- Power Main Awning
- 30" Entrance Door
- Remote Heated Mirrors
- TV Antenna with Booster
- 22.5" Tires with Polished Aluminum Wheels

## STRUCTURAL

- Insulated, Formed One-Piece Baggage Doors
- 3" Laminated, Steel Framed Floor with Ducted Heating
- Laminated Aluminum Framed Sidewalls, Roof (Including All Openings)
- Under Floor Steel Truss System

## DRIVER/PASSENGER AREA

- Soft Touch Driver/Passenger Reclining Swivel Bucket Seats
- Auxiliary Start Switch
- Defroster Fans
- Power Front Sun Visor and Manual Side Shades
- Driver/Passenger LED Map Lights
- Soft Touch Vinyl Ceiling
- Optional Driver 6-Way Power Seat
- I.C.C. Flash
- Radio – Single CD AM/FM
- Radio Power Selector Switch
- Rear Vision Camera with Monitor & Audio
- Color Side Cameras

## LIGHTING/DINING/GALLEY

- 22.5' cu. ft. Stainless Steel Residential Refrigerator w/ Dedicated Inverter (Standard Models 360, 377, 378)
- 30" OTR Stainless Steel Microwave
- Hand Laid Tile Backsplash
- Stainless Steel Oven with Sealed Burners
- LG® Solid Surface Kitchen Countertop
- Under Mount Stainless Steel Sink With Flush Solid Surface Covers
- High Rise Faucet with Pull-Out Sprayer
- Flush Mount Solid Surface Range Covers
- Flush Mount LED Ceiling and Accent Lighting
- Carpet Free Step Well
- Satellite Prep
- Slide Out Pantry (W/A)
- 32" LCD HD TV with Home Theater (40" Standard Models 360, 377, 378)
- Euro Recliner with Ottoman (Opt.) (Std. 360, 378)
- Soft Touch Leatherette Hide-A-Bed Sofa
- Dream Dinette (where applicable)

## BATH

- 10 Gallon Gas/Electric Water Heater with DSI
- Vessel Sink(s)
- Black Water Tank Flush System
- Dual Control Shower Faucet with Flex Head
- Linoleum In Bathroom Area
- Medicine Cabinet
- Porcelain Toilet With Foot Flush
- Shower Skylight
- Towel Bar
- Washer Dryer Prep Std. (360, 377, 378)
- One-Piece Fiberglass Shower with Integrated Seat

## BEDROOM

- 13.5K Air Conditioner In The Bedroom
- 60" X 80" Island Queen Bed With Bedspread, Headboard, Pillow Shams And Storage Below (72 X 80 King Bed Models 337, 360)
- Radius Corner Mattress and Bed Base
- 32" LCD/HD Bedroom TV (Select Models)

## SAFETY

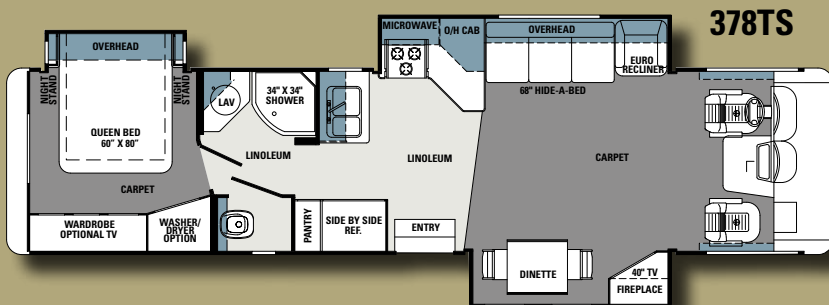
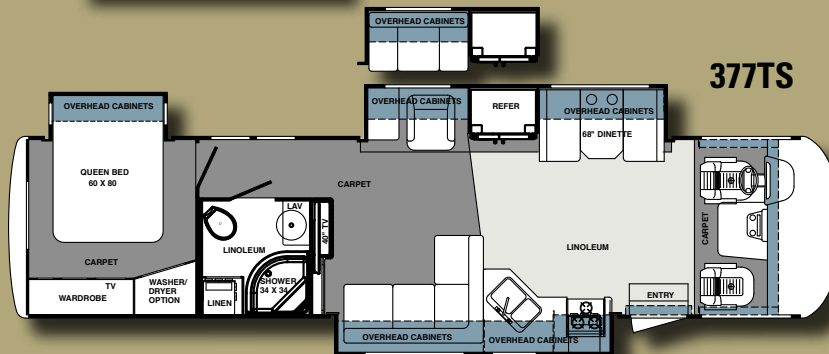
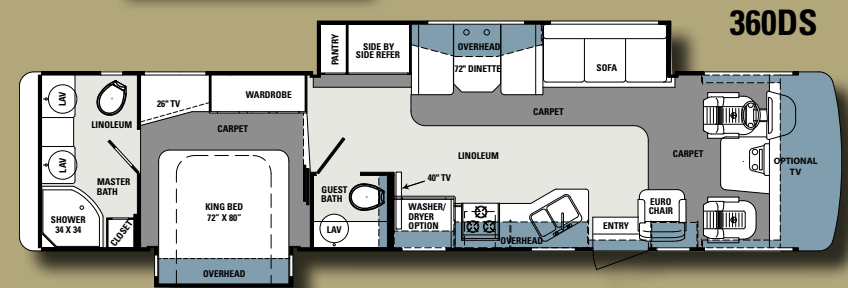
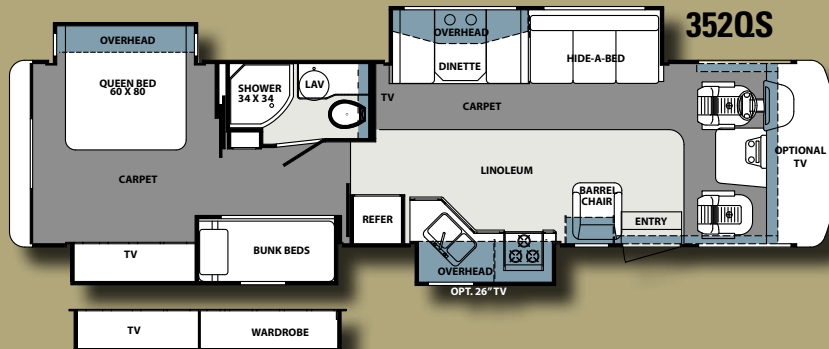
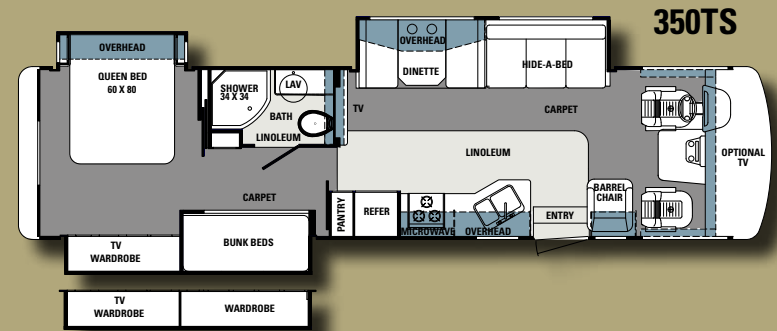
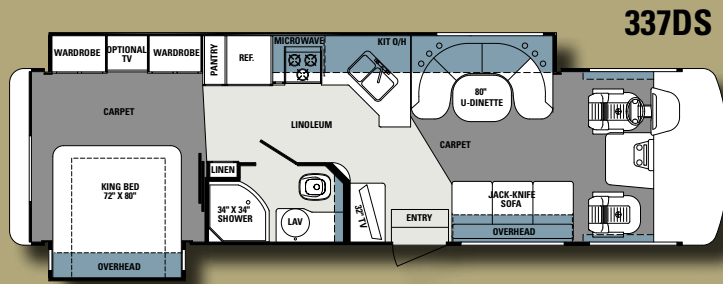
- 110V GFI Protected Circuit (Kitchen, Bath, Exterior)
- Automatic Transfer Switch
- Carbon Monoxide Detector
- Exit Window
- LPG Detector
- Smoke Alarm
- 3-Point Seat Belts
- Recess Mounted Fire Extinguisher (Inside Entry Door)

## WATER/HEATING/ VENTILATION/ POWER

- 50 Amp 120V Distribution Panel and Cord
- 70 Amp 12V Power Converter
- Fantastic Vent In Kitchen
- Arctic Package
- Washer/Dryer Prep (Std. 360, 377, 378)
- Water Filtration System (1 Micron)
- 35,000 BTU Furnace
- Models 352, 377 and 378, Two Furnaces (35,000 & 20,000 BTU)
- Electric Battery Disconnect
- Generator – 5.5 Onan (Std.)
- Power Ceiling Fan In Bath
- Roof A/C – 13.5 BTU Ducted – Front and Rear

## POPULAR OPTIONS

- 15K Air Conditioner In The Front
- Washer/Dryer (Opt. Models 360, 377, 378)
- Air Conditioner Heat Strip(s) (N/A Low Profile A/C(s))
- Convection Microwave IPO Standard Microwave
- Convection Microwave and Cooktop IPO Standard Microwave and Oven
- Porcelain Tile
- Free Standing Dinette with 4 Chairs (Std. On 378)
- Low Profile Air Conditioner
- Roller Shades
- Vista Lounge with 2 Euro Recliners (337 Only)
- Euro Recliner IPO Barrel Chair (Std. 360, 378)
- Power Drivers Seat
- Drivers Side Door Available On All Models Except 337
- GPS/Sirius XM Satellite Radio



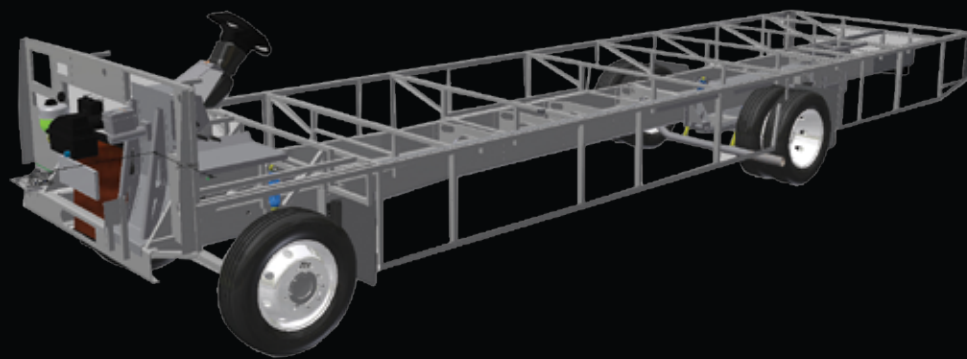
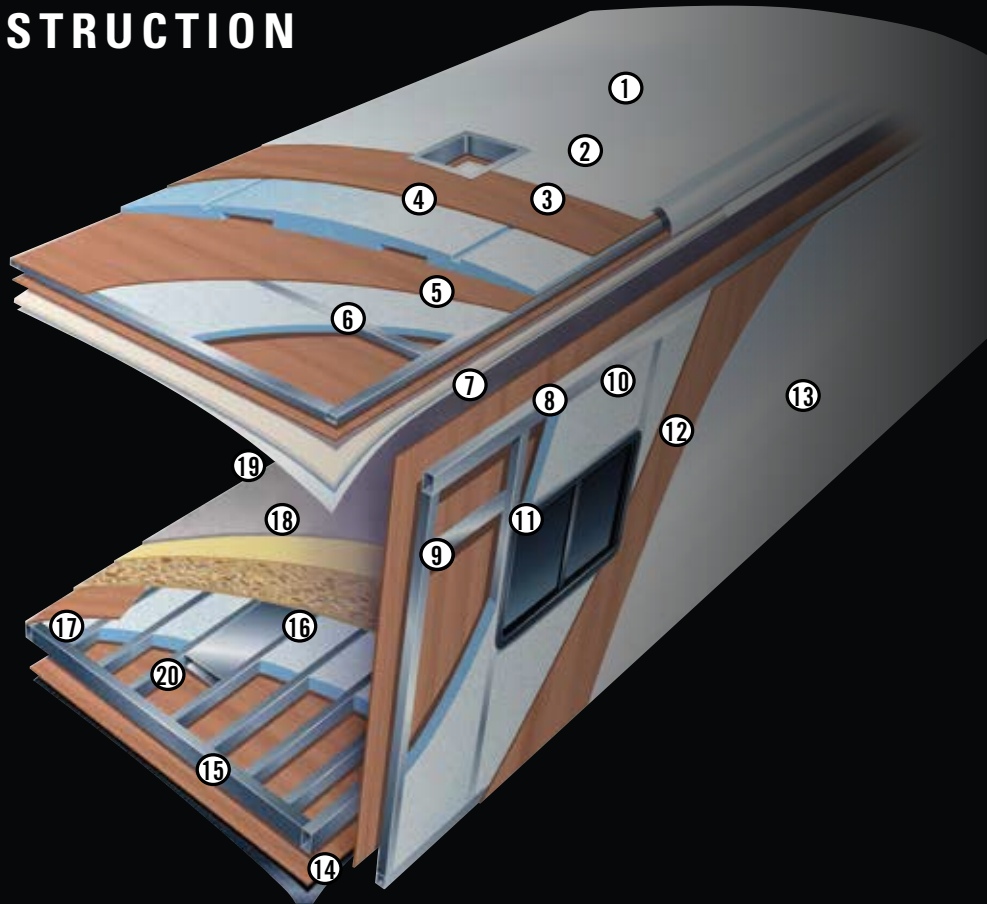
**DIMENSIONS & CAPACITIES**

MODEL	337DS	350TS	352QS	360DS	377TS	378TS
GCWR (lb.)	30000	30000	30000	30000	30000	30000
GVWR (lb.)	24000	24000	24000	24000	24000	24000
*Cargo Carrying Cap. (lb.)	TBD	3850	3370	3730	2980	3760
Wheelbase	208"	228"	228"	242"	242"	242"
Fuel Capacity (gal.)	80	80	80	80	80	80
Tire Size	235/80R22.5	255/80R22.5	255/80R22.5	255/80R22.5	255/80R22.5	255/80R22.5
Interior Height	84"	84"	84"	84"	84"	84"
Interior Width	95 1/2"	95 1/2"	95 1/2"	95 1/2"	95 1/2"	95 1/2"
Overall Height w/ AC	12' 7"	12' 8"	12' 8"	12' 8"	12' 8"	12' 8"
Overall Length	33' 5"	36' 2"	36' 8"	37' 11"	37' 11"	37' 4"
Overall Width	101"	101"	101"	101"	101"	101"
Exterior Storage (cu. ft.)	145	173	173	197	197	198
Fresh Water (gal.)	65	65	65	65	65	65
Black Water (gal.)	41	41	41	82	41	41
Grey Water (gal.)	41	41	41	82	41	41
LP Tank (gal.)	24	24	24	24	24	24
Water Heater (gal.)	10	10	10	10	10	10
Furnace (b.t.u.)	35k	35k	35k&20k	35k	35k&20k	35k & 20k
Patio Awning	18'	14'	15'	17'	20'	20'

\*with full gas tank and LP bottles Ford (22,000lb. Models Only)

Approximate dry weight can be obtained by subtracting the CCC from the GVWR, which may vary by options.

# GEORGETOWN XL CONSTRUCTION



## CONSTRUCTION SPECIFICATIONS

### MULTI-LAYERED LAMINATED ROOF SYSTEM

1. Seamless wrap over fiberglass roof
2. Luan Decking
3. Block foam insulation
4. Dual A/C Ducts
5. Tubular aluminum framing
6. Luan

### 2-INCH VACUUM-BOND LAMINATED SIDEWALLS

7. Decorative interior wall board
8. Electro-galvanized sheet metal backers
9. Tubular aluminum framing
10. Block foam insulation
11. All sidewall openings framed in aluminum
12. Luan
13. Smooth gelcoat fiberglass exterior

### 3-INCH VACUUM-BOND LAMINATED FLOOR SYSTEM

14. Fiberglass reinforced vinyl vapor barrier
15. Luan
16. Block foam insulation
17. Virtually seamless floor decking
18. Thick padding
19. Durable carpet
20. 2.5" Steel Framing



# Georgetown





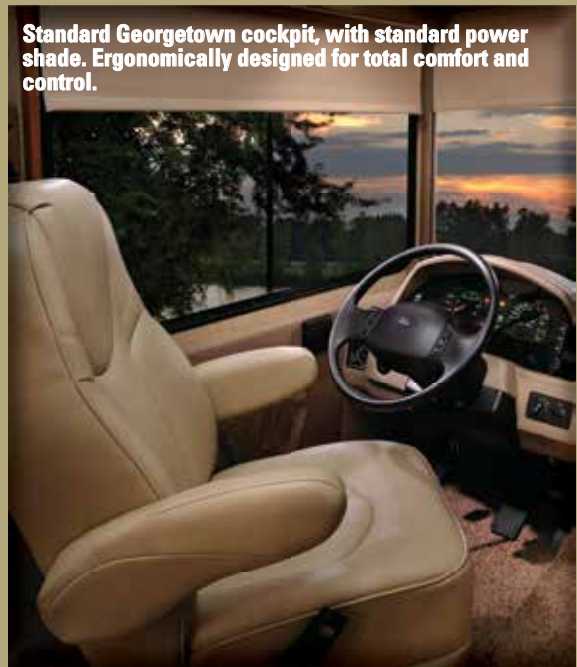
Model 335 shown with Latte decor

The Georgetown Series is great for weekend campers and full-time campers alike. With 5 great floor plans and four interiors to choose from you are sure to find one that suits your tastes and needs. Engineered for the road and designed for the driver our models offer you plenty of storage and all of the amenities at a great price.

Visit your local Georgetown dealer today and see what all the talk is about.



Model 335 shown with Sugarmaple countertop and Latte decor



**Standard Georgetown cockpit, with standard power shade. Ergonomically designed for total comfort and control.**



**Secondary 335 Pantry**

**The Georgetown series is a great way to introduce yourself to life on the road. The Georgetown 335 (pictured in Khaki with the Sugarmaple countertop ) is a great floor plan for people with kids or adults who love to entertain.**

**The large galley provides the family chef with everything they need to cook a gourmet meal, or simply warm up some water for a nice cup of tea. Round that out with a spacious dinette that can seat friends and family in total comfort for eating or a friendly game.**

**The master suite is a private retreat with plenty of storage and the standard 32" LCD/HD TV gives you the opportunity to watch your favorite shows in total comfort.**

**The Georgetown 335, where efficient design and true comfort are combined for your benefit.**

**Georgetown 351 bunk area is built for rest and relaxation, comes complete with two flatscreen LCD/HD TV's as an option.**



**329 Front bunk option**



**329 with Sugarmaple countertop and Latte decor**



**329 Bedroom**





# Georgetown

## STANDARDS

- Seamless Wrap Over Fiberglass Roof
- Deluxe Solid Surface Kitchen Countertops
- Undermount Stainless Steel Kitchen Sink with Flush Solid Surface Covers
- High Rise Kitchen Faucet w/ Pull Out Sprayer
- Fog Lights
- Slam Latch Baggage Doors
- 1 Piece Windshield For Panoramic View
- Slide Out Awnings
- Stainless Steel Bathroom Sink
- Dream Dinette
- Huge Rear Storage Compartment
- 30" Entrance Door (N/A 280)
- Water Filtration System-Full Coach
- Outside Shower
- Easy Access Cockpit
- Flat Floor Throughout
- Deluxe Dash
- AM/FM/CD Player
- 3 Point Seat Belts
- Dash Fans
- Soft Touch Driver Passenger Seats
- Soft Touch Hide A Bed Sofa
- Designer Lighting Package
- Day/Night Shades
- Slide Out Pantry (W/A)
- 32" TV
- Full Extension Drawers With Roller Bearing Slides
- Power Fan in Bathroom
- 1 Piece Fiberglass Shower
- Arctic Pack With Enclosed Tanks
- Solid Pocket Door To Bedroom
- 32" LCD/HD Bedroom TV (Select Models)
- 30" Over The Range Microwave

- Hand Laid Glass Tile Kitchen Backsplash
- Pull Out Sprayer Single Lever Faucet
- 5000# Hitch
- Second Auxiliary Battery
- Automatic Leveling Jacks
- Rear Vision-Color (Back-Up Camera)
- Remote/Heated Driver and Passenger Mirrors
- Black Tank Flush
- LED Map, Bunk and Accent Lights
- 6 Gal. G/E DSI Water Heaters

## POPULAR OPTIONS

- 13.5 A/C Rear With 50 Amp Service and Onan 5.5 Generator or 50 Amp Service with Onan 5.5 Generator
- A/C Heat Strip
- Second A/C Heat Strip
- Power Pro Electric Awning
- 15K Roof Air Ducted (IPO 13.5K)
- Linoleum In Place Of Carpet
- Convection Microwave with Oven
- Convection Microwave with Cooktop
- Power Drivers Seat
- Fantastic™ Fan-Kitchen
- Euro Recliner I.P.O. Barrel Chair (W/A)
- Full Body Exterior Paint (Includes Gel Coat Option and Power Pro Awning)
- Colored Fiberglass Package
- Dual Pane Windows
- DVD Players In Bunk House (351 Only)
- Home Theater System
- Rear Vision Color Side Camera's
- Additional Front TV (N/A Front Bunk Models)



STANDARD GRAPHICS WITH OPTIONAL PARTIAL PAINT

## FULL BODY PAINT OPTIONS



PARFAIT



ESPRESSO



MIDNIGHT

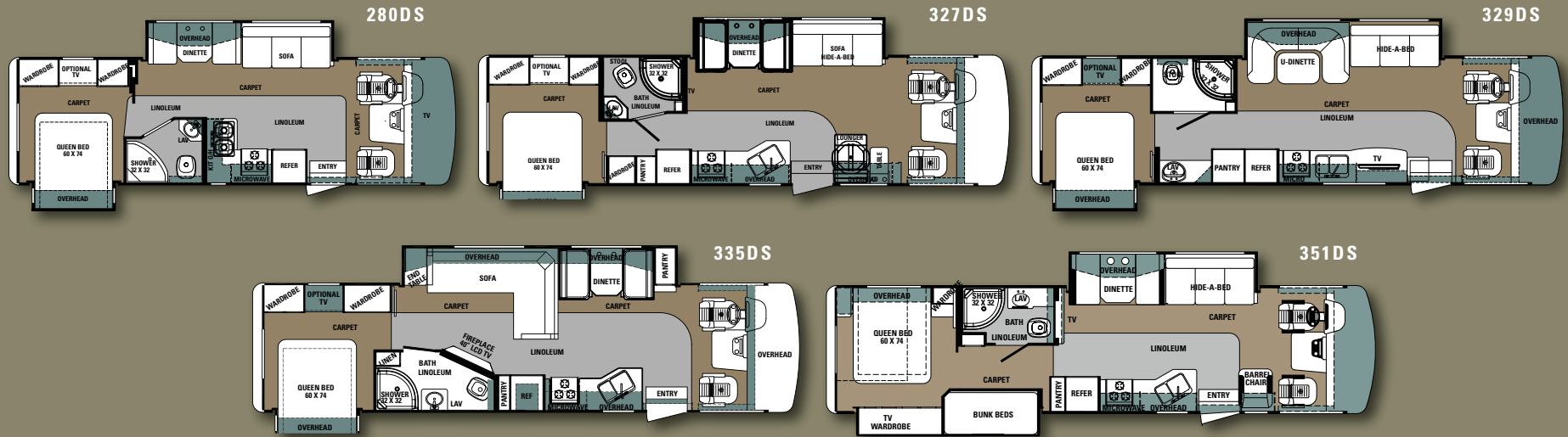


FIRE MIST



CREME BRULEE

# Georgetown FLOOR PLANS



## SPECIFICATIONS

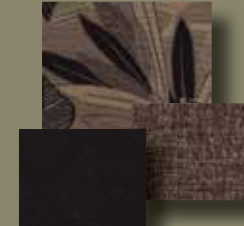
MODEL	280DS	327DS	329DS	335DS	351DS
GCWR (Lb.)	26000	26000	26000	26000	26000
GVWR (Lb.)	18000	20500	20500	20500	20500
Cargo Carrying Cap. (Lb.)	3200	3430	4220	TBD	4070
Wheelbase	178"	208"	208"	208"	208"
Fuel Capacity (Gal)	80	80	80	80	80
Tire Size	225/70R19.5	245/70R19.5	245/70R19.5	245/70R19.5	245/70R19.5
Interior Height	80"	80"	80"	80"	80"
Interior Width	95 1/2"	95 1/2"	95 1/2"	95 1/2"	95 1/2"
Overall Height w/AC	12' 1"	12' 1"	12' 1"	12' 1"	12' 1"
Overall Length	29' 2"	33' 9"	34' 3"	34' 11"	35' 9"
Overall Width	101"	101"	101"	101"	101"
Exterior Storage (Cu. Ft.)	90	123	120	100	157
Fresh Water (Gal)	50	50	50	50	50
Black Water (Gal)	41	41	41	41	41
Grey Water (Gal)	41	41	41	41	41
LP Tank (Gal)	24	29	24	24	24
Water Heater (Gal)	6	6	6	6	6
Furnace (BTU)	35K	35K	35K	35K	35K
Patio Awning	14'	18'	18'	18'	14'

## INTERIOR DECOR OPTIONS

Khaki



Shadow



Sugarmaple  
Countertop by LG



Hartford Cherry



Latte



Thunder



\*With full gas tank and LP bottles

Approximate dry weight can be obtained by subtracting the CCC from the GVWR, which may vary by options.



**Midnight full body paint option**



**Heavy roto cast storage compartments  
Side hinges with easy to close latches**

Inside and out the Georgetown is both beautiful and functional. Six exterior options give you the opportunity to express yourself while you travel. Four interior options give you the opportunity to express yourself to your guests in your living quarters. Georgetown gives you the true freedom to design a motorhome built to suit your lifestyle.

Another great feature of the Georgetown series is expansive exterior storage. Heavy duty side hinged exterior storage doors (pictured upper right) protect your items in the large storage areas. The full pass thru super storage (pictured lower right) area gives you easy access to whatever you may need while you travel.

Whether you are leaving for the weekend or the season Georgetown will deliver a truly enjoyable experience.



**Georgetown super storage rear compartment**



Forest River, Inc. encourages our customers to purchase their Forest River products from a local dealership whenever possible for the following reasons:

It is the goal of Forest River, Inc. that all of our RV owners fully enjoy the RV experience and that customer satisfaction meets or exceeds their expectations!

- 1) Forest River, Inc. dealers are independently owned and operated businesses so priority service and scheduling is at their discretion and is often provided to customers that purchased their unit at that dealership.
- 2) Purchasing locally allows customers to establish meaningful relationships with a dealer, enhancing the RV experience through assistance with product questions, user tips or RV regulations for your state or country, and much more!
- 3) Canadian customers must meet requirements to bring an RV purchased out of the country to their home. These requirements may involve additional inspections and certifications, taxes and fees. Your local Canadian Dealer is a professional at meeting these requirements.
- 4) Scheduling timely warranty repairs and adjustments through a local dealership provides far greater flexibility and convenience to you, the customer!



**PRE-DELIVERY INSPECTION FACILITY**

20,000 square feet of quality assurance. The bare essentials for a premium product. This state-of-the-art facility gives immediate daily feedback to production for quality assurance in every unit built.

**24/7 EMERGENCY ROADSIDE ASSISTANCE**

**Coach-Net<sup>®</sup>**

For a worry-free ownership experience Forest River includes one year of Coach-Net RV Technical & Roadside Assistance with each RV purchase. Whether new to the RV lifestyle or an experienced RV enthusiast, Forest River owners have 24/7 access to technical, operational and emergency road service coverage throughout the US & Canada. Coach-Net's fast, dependable service is just a phone call away.



**Learn More**  
Scan this barcode using a QR Reader on your smart phone to learn more about Forest River.



A Berkshire Hathaway company.

Forest River, Inc.  
58277 S.R. 19 South • Elkhart, IN 46517  
Phone: 574.296.7700 Fax: 574.295.8749  
www.forestriverinc.com  
www.forestriveraccessories.com

Colton RV  
North Tonawanda, NY  
14120 (716) 694-0188  
(800) 628-4889  
www.ColtonRV.com

Colton RV  
Orchard Park, NY  
14127 (716) 957-3250  
(800) 628-4889  
www.ColtonRV.com