

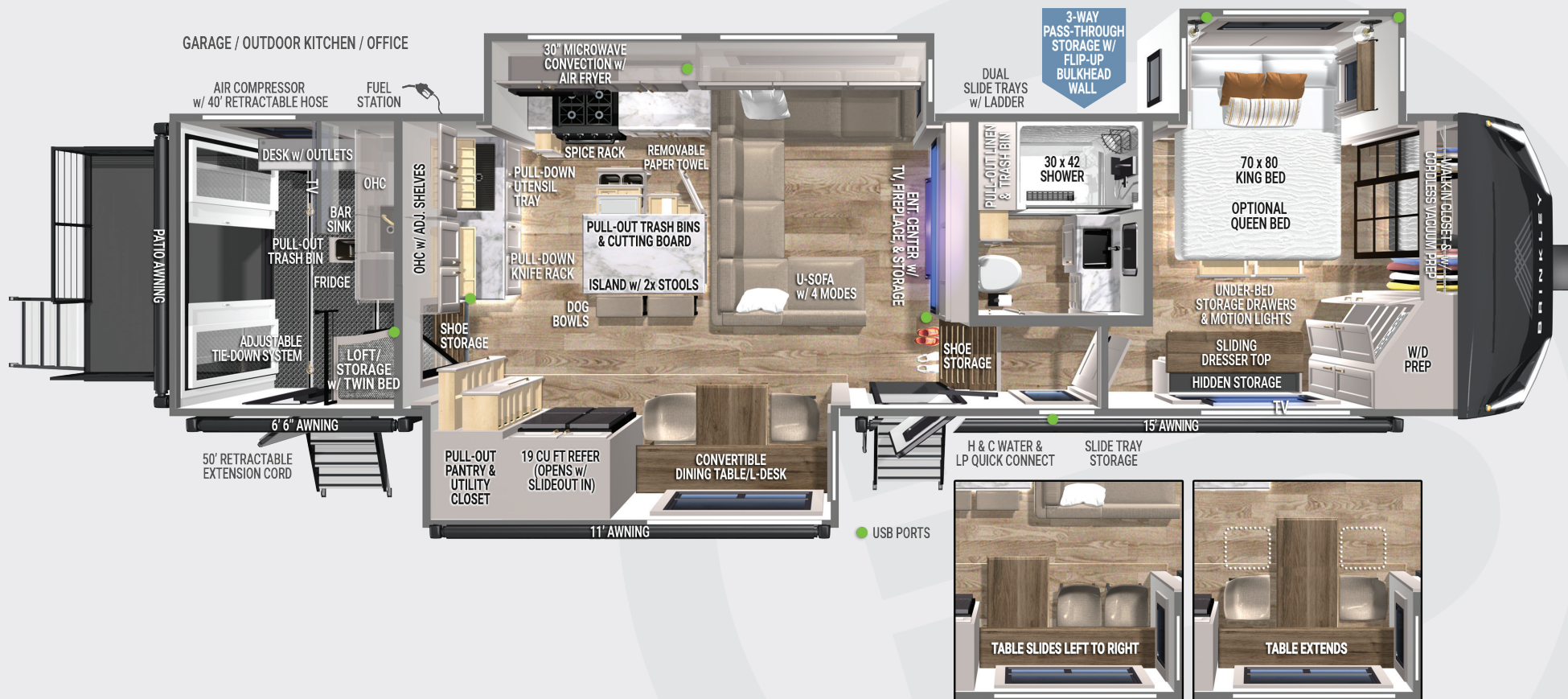
PRE-PRODUCTION PREVIEW

# MODEL G 3250

Colton RV & Marine  
3122 Niagara Falls Blvd  
North Tonawanda, NY 14120  
(716) 694-0188  
www.ColtonRV.com

Colton RV & Marine  
3443 Southwestern Blvd.  
Orchard Park, NY 14127  
(716) 957-3250  
www.Coltonrv.com

Standard Run **MSRP \$194,474**  
with \$14,236 Premium Build Package



## SPECIFICATIONS:

- UVW – 16,700 lbs.
- GVWR – 22,000 lbs. (Triple Axle)
- Hitch Weight – 3,150 lbs.
- Exterior Length – 37' 11"
- Overall Height – 13' 4"
- Overall Width – 101"
- Garage Door Capacity – 3000 lbs.
- Garage Door Patio Capacity – 1500 lbs.
- Fresh Water Capacity – 150 gal.
- Gray Water Capacity – 156 gal. (104 True + 52)
- Black Water Capacity – 52 gal.
- Fuel Station Tank – 30 Gal.
- Wheels & Tires – 17.5" H-Rated (16-Ply)
- Insulation:
  - Floors, Ceiling, Front Cap – R-40
  - Walls – R-11

050324

### PRE-PRODUCTION INFO

Based on pre-production prototype. All preliminary info & content is subject to change without notice. Please consult with your dealer for current production model details & information.



For the latest Information, MSRP, Photos, Video & to Learn why Brinkley go to [BrinkleyRV.com](http://BrinkleyRV.com)



# MODEL G 3250

## SPECIFICATIONS & FEATURES

### EXTERIOR & CONSTRUCTION:

- 3-Way Pass-through Storage w/ Multi-Functional Flip-Up Bulkhead Dividers (Best-in-Class)
- Under I-Beam Storage – Industry 1st (Patent Pending) w/ 3x 48" Deep MORryde Storage Drawers (500 lbs. Capacity Each)
- 50 Amp Push-Button Power Cord Reel
- Air Compressor (135 PSI) w/ 40' Retractable Air Hose
- 50' Retractable Extension Cord
- 65' Retractable City Water Hose
- Electric Waste Valves w/ Indicator Light & Manual-Override
- 100" Zero-Gravity Ramp Door w/ Electric Top Latches
- 3 Season Patio Doors w/ Screens & Tinted Windows
- Residential Style Wire Patio Railing, Power Awning, & Steps
- 3x Power Side Awnings (Black)
- Neon Awning Lights (Dimmable)
- ☑ Slideout Toppers \$2,020
- Brinkley Automotive-Grade Sealant Package
- Low-Maintenance Roof
- Euro Square Frameless Windows w/ 6" Openings (Industry 1st)
- ☑ Dual Pane Euro Square Frameless Windows w/ 6" Openings \$2,600
- LED Flood Lights (At Fuel & Water Connection)
- RGBW Underbody Lighting (Dimmable)
- MAX-Vision™ Reverse Lighting System (Includes High-Lumens Under-Bumper Lights + Awning, Underbody, & Flood Lights)
- Automotive Grade Front Cap, Lights, & Lenses
- Under-Step Lighting (Front & Garage Side Steps)
- 3x Neon Pass-through Storage Area Lights
- Gen & Solar Storage Area Motion Activated Lighting
- Portable 14.5' Telescoping Ladder

### KITCHEN, DINING & OFFICE:

- Pull-Out Utility Closet w/ Cordless Vacuum Prep & Outlet
- Pull-Out Cutting Board (Removable for Cleaning)
- Premium Residential Cabinets & Drawers w/ Dovetail Joints
- Adjustable Overhead Cabinet Shelves
- Pull-Down Utensil Tray
- Pull-Down Magnetic Knife Rack
- Pull-Out Pantry w/ Adjustable Shelves & Drawers
- Pull-Out Spice Rack
- Cookie Sheet Storage Space
- Under Oven Storage Drawer w/ Matching Drawer Front
- Pull-Out Trash & Recycling Bins
- Stow n' Go Paper Towel Holder
- Large Adjustable Drawer Organizer
- Residential Solid Surface Countertops & Backsplash
- Residential Bar Pendant Light
- Kitchen Work Lighting Under Overhead Cabinets
- Convertible Dining Room Table/L Desk (Seating up to 4)

### BED & BATHROOM:

- Pull-Out Linen Closet w/ Adjustable Shelves
- Pull-Out Bathroom Trash Bin
- Backlit Recessed Medicine Cabinet
- Residential Shower System w/ Head, Body, & Handheld Sprayer
- Neon Shower Lighting
- Dual Bedside Outlets w/ USB & USB-C Ports
- Dual Bedside Shelves
- Hidden Sliding Dresser Top Storage Compartment
- 4x Under-Bed Storage Drawers
- Residential 9" Memory Foam King Mattress w/ Gel Topper (70"x80")
- ☑ Residential 9" Memory Foam Queen Mattress w/ Gel Topper (60"x80") & Nightstands \$428
- LED Closet Lights
- Dual Motion Activated LED Bed Lights

### ELECTRONICS:

- Rockford Fosgate – Model G Exclusive
  - 4x Independent Zones
  - 3x Amps
- Interior:
  - 2x Remote Panels
  - 4x Ceiling Speakers
  - 12" Subwoofer
- Exterior:
  - Remote Panel (Campside)
  - 4x Campside Speakers
  - 10" Campside Subwoofer
  - 4x Patio Speakers
- Full App-Based Coach Control System (Includes Touch Screen & Garage Linked Control Panel)
- Rear & Side Camera System w/ 7" Screen
- TravelFi® XTR Wi-Fi Router w/ Roof Antenna & 4G/LTE Virtual SIM
- Winegard Air 360+ TV & FM Antenna
- 65" Phillips Smart TV (Main)
- 43" Phillips Smart TV (Garage)
- 32" Phillips Smart TV (Bedroom)

### POWER:

- FlexPower 5500 w/ Dual Fuel Inverter Generator (Gas or LP)
- Solar System w/ Designated Storage Area
  - 800w of Solar Panels
  - 3000w Inverter
  - 50 Amp MPPT Solar Charge Controller w/30 Amp DC to DC Charger
  - 200 Ah of Lithium Batteries (Self-Heating)
  - Solar Disconnect Switch
- 30 Gallon Fuel Tank w/ Pump Station
- 2x 30 lbs. LP Tanks (Room for 20 to 40 lbs. Bottles)
- Magnetic Wire Access Hatch (Behind Toilet)

### INTERIOR:

- Residential Interior with Brinkley's CraftSense™ Wood Trim Construction
- Floating Entrance Steps w/ Indirect Lighting & Double Deep Shoe Storage & Tray
- U-Shaped Expanding Sofa w/ Full, Small-U, Bed, Travel Modes
- Residential Dimmable Ceiling Can Lighting
- Window Intergraded Day Screens & Blackout Shades w/ Reflective Insulation + Full Bug Screens
- Pet-Friendly Package (Child/Pet Defender Screen Protector, 100% Carpet Free, Ductless Floors, & Pull-Out Removable Bowls)

### APPLIANCES:

- GE Energy Star 19 Cu. Ft. Fridge w/ Ice Maker & Filtered Water
- 12v Heated Ice Maker Line (Industry 1st)
- Three Stage Residential Water Filters (Plus in Fridge Filter)
- GE Profile Microwave (w/ Air Fryer, US Market Only)
- 24" GE Profile Oven w/ 4 Burner Range & Storage Drawer
- Tankless Water Heater (Controller in Main Bath)
- GE Low-Profile 13.5k High-Efficiency Main AC w/ Heat Pump
- GE Low-Profile 13.5k High-Efficiency Bedroom AC w/ Heat Pump
- GE Low-Profile 13.5k High-Efficiency Garage AC w/ Heat Pump
- Exterior Drawer Fridge/Freezer – 24 Can Capacity (12v Power)
- Fireplace w/ 5,000 BTU Electric Heat
- Stackable Washer & Dryer Prep (Bedroom)
- 2x Maxxair Fans w/ Rain Sensor (Kitchen & Bathroom)

### GARAGE:

- Patio Galley / Office / Mudroom w/ Drawers & Cabinets, Sink, Pull-out Trash Can, 4.5 cu. ft. Refrigerator, Under-Step Shoe Storage Tray, 3x Coat Hooks, Desk Space w/ Power
- Adjustable Tie-Down System
- 43" Smart TV
- Overhead Loft/Storage w/ Cable Railing, Twin Mattress, & Ladder
- Neon Garage Lighting (Dimmable)
- Zero-Gravity Rear Patio w/Electric Latches

### RUNNING GEAR & TOWING:

- 3x Heavy-Duty 7k lbs. Axles w/ 8k lbs. Leaf Springs & Dexter Tow Assist w/ Electric ABS Brakes
- ☑ 3x Heavy-Duty 8k lbs. Axles w/ 8k lbs. Leaf Springs & Dexter's Best Hydraulic Disc Brake Package \$7,088
- SumoSprings® (Unmatched Stability, 68% Reduction in G-Forces)
- 30k Gen-Y® Executive Torsion Flex Pin-Hitch Box (Fifth Wheel)
- ☑ 25k Gen-Y® Executive Torsion Flex Pin-Hitch Box (Gooseneck) \$399
- Commercial Grade H-Rated Cooper 16-Ply Tires
- 17.5" Custom Aluminum Luxury Wheels
- Dexter EZ-Flex Suspension Equalizer System
- Banded Tire Pressure Monitoring System (TPMS) w/ Wireless Display