



Pursuit

BY COACHMEN



CoachmenRV.com

THERE ARE NO SMALL THINGS WHEN IT COMES TO PURSUIT.

IN DESIGNING PURSUIT, WE TOOK CARE OF EVERY DETAIL. THE RESULT?
AN EXPERIENCE THAT WILL SURPRISE AND DELIGHT YOU AT EVERY TURN.



Cooking in the Pursuit is a breeze, thanks to generous cabinet and countertop space. The backsplash and fixtures add a touch of style.

The outdoor entertainment system is perfect for watching the game outside while the dash includes a computer workstation with 12V, 110V, and USB outlets, perfect for when you want to stay connected.

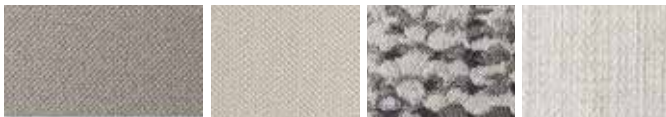


Spacious exterior storage compartments make it easy to haul extra gear without taking up space inside.

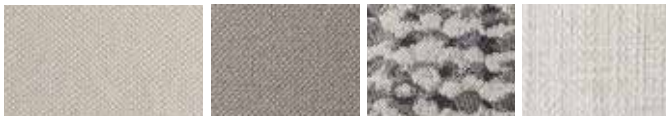
An outdoor entertainment system complete with large LED TV and integrated speakers in the awning, is the perfect way to kick back after a day exploring! (N/A 27XPS, 29XPS)

15,000 BTU A/C's keep you cool in the summer.

INTERIOR DÉCOR COLOR SELECTIONS



Ozark



Cumberland

INTERIOR WOOD COLOR SELECTIONS



White Velvet



Chocolate Cherry



Photography features the Pursuit 31TS floorplan.



Pursuit's spacious dream dinette provides a comfortable place to enjoy meals. The dinette converts into a bed for extra sleeping.

When done exploring the great outdoors, recline, relax and enjoy a movie on the LED TV in theater seating (31TS).

Amenities include an electric fireplace and LED TV (where applicable).

Pursuit's drop-down bunk is designed to provide an additional sleeping quarter while maximizing space when not in use.

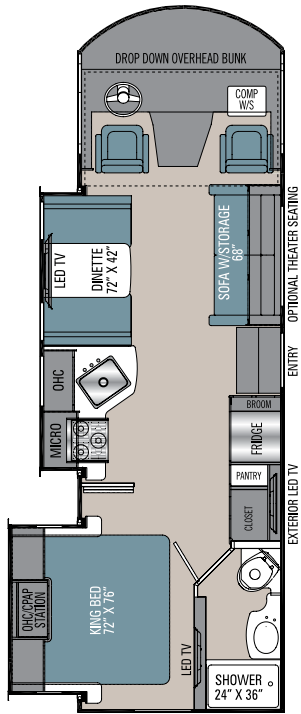
With porcelain touches, the bathroom is both tastefully designed and easy to clean.

A designer headboard adds a touch of style to the comfortable bedroom, which includes a king mattress (select floorplans). Storage space has been optimized, giving you more options for long distance trips.

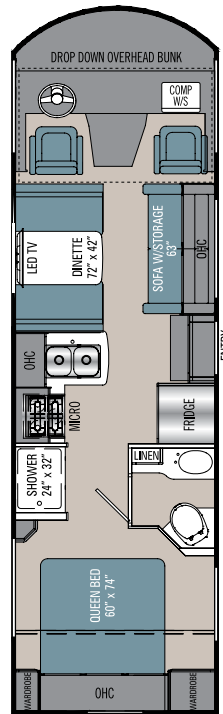


FLOORPLANS

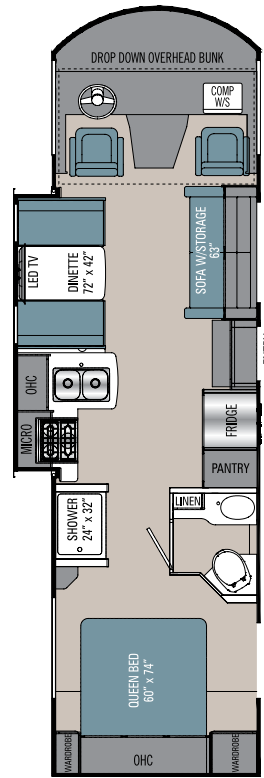
Pursuit includes six floorplan options, so you'll have no trouble choosing the one that suits you perfectly.



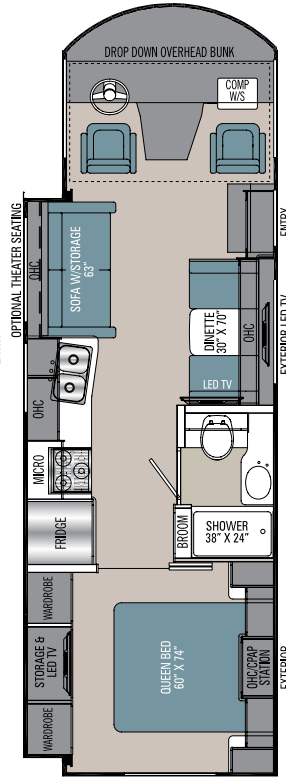
27DS



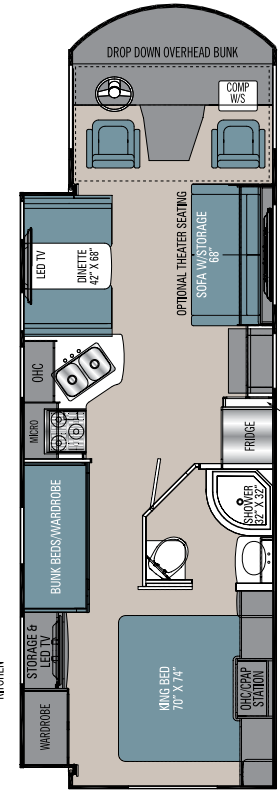
27XPS



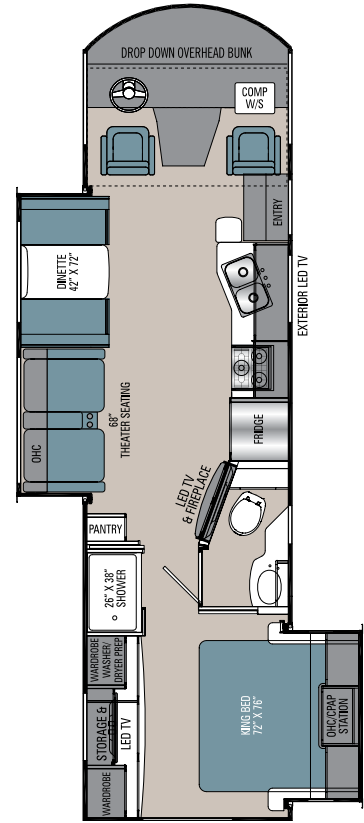
29XPS



29SS



31BH



31TS

PURSUIT SPECIFICATIONS

CLASS A GAS	27DS	27XPS	29XPS	29SS	31BH	31TS
FORD ENGINE V-8 7.3L 3-VALVE	350 HP/468 TRQ	350 HP/468 TRQ	350 HP/468 TRQ	350 HP/468 TRQ	350 HP/468 TRQ	350 HP/468 TRQ
WHEEL BASE	178"	178"	190"	190"	190"	208"
GVWR	16,000 lbs	16,000 lbs	16,000 lbs	18,000 lbs	18,000 lbs	18,000 lbs
GCWR	23,000 lbs	23,000 lbs	23,000 lbs	23,000 lbs	23,000 lbs	23,000 lbs
GAWR FRONT	6,500 lbs	6,500 lbs	6,500 lbs	7,000 lbs	7,000 lbs	7,000 lbs
GAWR REAR	11,000 lbs	11,000 lbs	11,000 lbs	12,000 lbs	12,000 lbs	12,000 lbs
FUEL CAPACITY	80 gal	80 gal	80 gal	80 gal	80 gal	80 gal
LP GAS CAPACITY	20 gal	20 gal	20 gal	20 gal	20 gal	20 gal
FURNACE (BTUs)	30,000	30,000	30,000	30,000	30,000	30,000
EXTERIOR LENGTH (w/o Ladder)	28' 9"	29' 0"	31' 0"	30' 3"	31' 9"	33' 0"
EXTERIOR HEIGHT (w/A/C)	12'	12'	12'	12'	12'	12'
EXTERIOR WIDTH	102"	102"	102"	102"	102"	102"
FRESH WATER	50 gal	50 gal	50 gal	50 gal	50 gal	50 gal
GREY WATER	76 gal	31 gal	31 gal	35 gal	38 gal	38 gal
BLACK WATER	38 gal	31 gal	31 gal	35 gal	38 gal	38 gal
WATER HEATER	6 gal	6 gal	6 gal	6 gal	6 gal	6 gal
AWNING SIZE	20'	16'	16'	20'	20'	17'

GVWR (Gross Vehicle Weight Rating) is the maximum permissible weight of the unit when fully loaded. It includes all weights, inclusive of all fluids, occupants, cargo, optional equipment and accessories. For safety and product performance do NOT exceed the GVWR.

GCWR (Gross Combined Weight Rating) is the maximum permissible loaded weight of your motor home and any towed trailer or towed vehicle. Actual GCWR of this vehicle may be limited by the sum of the GVWR and the installed hitch receiver maximum capacity rating; see hitch rating label for detail.

GAWR (Gross Axle Weight Rating) is the maximum permissible weight, including cargo, fluids, optional equipment and accessories that can be safely supported by each axle.

UVW (Unloaded Vehicle Weight) * is the typical weight of the unit as manufactured at the factory. It includes all weight at the unit's axle(s), including full fuel, all fluids and LP Gas. The UVW does not include cargo, fresh potable water, additional optional equipment or dealer installed accessories.

*Estimated Average based on standard build optional equipment.

CCC (Cargo Carrying Capacity) ** is the amount of weight available for fresh potable water, cargo, passengers, additional optional equipment and accessories. CCC is equal to GVWR minus UVW. Available CCC should accommodate fresh potable water (8.3 lbs per gallon). Before filling the fresh water tank, empty the black and gray tanks to provide for more cargo capacity.

** Estimated average based on standard build optional equipment

Each Coachmen motorhome is weighed at the manufacturing facility prior to shipping. A label identifying the unloaded vehicle weight of the actual unit and the cargo carrying capacity is applied to every Coachmen motorhome prior to leaving our facilities.

The load capacity of your unit is designated by weight, not by volume, so you cannot necessarily use all available space when loading your unit.

Actual towing capacity is dependent upon your particular loading and towing circumstances, which includes the GVWR, GAWR and GCWR as well as adequate trailer brakes. Please refer to the Operator's Manual of your vehicle for further towing information.

All information contained in this brochure is believed to be accurate at the time of publication. However, during the model year, it may be necessary to make revisions and Coachmen reserves the right to make all such changes without notice, including prices, colors, materials, equipment and specifications as well as the addition of new models and the discontinuance of models shown in this brochure. Therefore, please consult with your Coachmen dealer and confirm the existence of any materials, design or specifications that are material to your purchase decision. 2/21

©Copyright 2021 Coachmen RV a Division of Forest River Inc. – All Rights Reserved.

STANDARD FEATURES

INTERIOR APPOINTMENTS

Manual Drop-Down Front Bunk
Self-Closing Ball Bearing Drawer Guides
Throughout
Thermofoil Countertops Throughout
Premium Linoleum Throughout
Brushed Nickel Hardware
Radius Slider Windows with Safety Glass
Reclining/Swivel Pilot Seats
Sofa (27DS, 27XPS, 29XPS, 31BH)
Theater Sofa (31TS)
Privacy Pleated Shades Coach
Dream Booth Dinette
Easy Clean Cockpit floor

INTERIOR EQUIPMENT

10" Touch Screen Radio AM/FM Radio
with Bluetooth Apple CarPlay and
Android Auto Link Enabled
LP Leak Alarm and Smoke Detector
Carbon Monoxide Detector
Fire Extinguisher
King Jack TV and Radio Antenna
LED TV Coach
Pre-Wired for Satellite Dish
Edison Bulb Entry Light
Charging Station for Electronic Devices

GALLEY

Stainless Steel Range Hood with Light
Stainless Steel Double Door Refrigerator
12V 10 Cu. Ft.
High Rise Kitchen Faucet
Stainless Steel Sink
Stainless Steel 3-Burner Range with Glass Cover
Stainless Steel Microwave Oven
Tile Backsplash

BATH AND WATER

Porcelain Toilet with Foot Flush
One Piece ABS Shower Surround
Retractable Shower Door
Power Bath Vent
6-Gallon Gas/Electric D.S.I. Water Heater
Demand Water Pump
Skylight Over Shower
Stainless Lavatory Sink
Black Tank Flush

SLEEPING

32" Bedroom TV (N/A 27XPS, 29XPS)
CPAP Cabinet
Upgraded Mattress

ELECTRICAL/HEATING/AC

50-Amp Power Cord (29SS, 31TS, 31BH)
30-Amp Power Cord (27DS, 27XPS, 29XPS)
5.5 Onan Generator (29SS, 31TS, 31BH)
4.0 Onan Generator (27DS, 27XPS, 29XPS)
100W Solar Panel with Controller
Automatic Transfer Switch
55-Amp Converter with Distribution Panel
GFI Circuit
Outside Receptacle
Emergency Start Switch
30,000 BTU E.I. Furnace
Dual 15,000 BTU A/C (29SS, 31TS, 31BH)
Single 15,000 BTU A/C (27DS, 27XPS, 29XPS)
Coach Command Center
LED Interior Lights

AUTOMOTIVE/EXTERIOR

Ford F53 7.3L V8 Chassis
Tilt and Telescoping Steering Wheel
Cruise Control
Traction Control
Sunload Sensor with Auto Dimming
Dash Lighting
Intermittent Wipers
Dash Air Conditioning
Computer Work Station with USB, 12V, 120V
Automatic Leveling Jacks
(27DS, 29SS, 31TS, 31BH)
Back Up Monitor with Side View Cameras
(27DS, 29SS, 31TS, 31BH)
Back Up Monitor (27XPS, 29XPS)
Radial Tires
Rear Mud Flaps Only
Power Entrance Step-Single
Crowned, Laminated TPO Roof
Radius Trunk Doors
Fiberglass Front Cap
High Gloss Dove Grey Sidewalls
(with Azdel™ Superlite Composite)
Dead Bolt Lock-Entrance Door
26" Radius Entry Door
Power Patio Awning
8,000 Towing Hitch with 7-Way Plug
(27XPS, 27DS, 29XPS)
5,000 Towing Hitch with 7-Way Plug
(29SS, 31BH, 31TS)
Rear Mounted Roof Ladder
Power Heated Mirrors
Rear Bumper
Stainless Steel Wheel Liners
Slide-out room awning(s) (Where Applicable)
20-Gallon LP Tank
Valve Stem Extenders
Outside Entertainment Center
with TV (27DS, 29SS, 31TS, 31BH)
Exterior Propane Hook-Up
Exterior Blue Tooth - TV Audio Speakers
Dual Tail Lights

OPTIONAL FEATURES

INTERIOR COLOR SELECTIONS

Cumberland
Ozark

INTERIOR WOOD COLOR SELECTIONS

White Velvet
Chocolate Cherry

OPTIONAL FEATURES

6-Way Power Drivers Seat (N/A 27XPS, 29XPS)
Theater Seating (27DS, 29SS, 31BH)
CSA Up-fit
CD-MVSA (Canadian Motor Vehicle Safety Act)¹

Notes:

¹ Mandatory For All Canadian Provinces

Colton RV
North Tonawanda, NY 14120
(716) 694-0188
(800) 628-4889
www.ColtonRV.com

Colton RV
Orchard Park, NY 14127
(716) 957-3250
(800) 628-4889
www.Coltonrv.com

THE COACHMEN ADVANTAGE

What is the Coachmen advantage? It's the collection of unique features offered in a Coachmen motorhome to ensure a smoother ride, a better camping experience, and a motorhome that will last for years.

1. NOBLE SELECT™

Protected by a three-year warranty, these sidewalls have a high-gloss gelcoat finish to prevent fading. They are also 20% lighter than wood substrate sidewalls, provide more occupant cargo carrying capacity, and offer three times the insulation against extreme climates.

2. AZDEL™ COMPOSITE

Most manufacturers use wood sidewalls that can expand, swell, and eventually mold. We use Azdel. It's impervious to water, won't rot or mold, and, with less than a 1% chance of delaminating, it ensures the long-term integrity of the sidewalls.

3. REINFORCED LAMINATION

We vacuum bond and pinch roll every sidewall, floor, and roof, then perform a pull adhesion test. Most manufacturers just do one process or the other, but by doing both we improve the strength and longevity of the sidewalls.

4. FOREFRONT OF TECHNOLOGY

We offer the latest in technology by pairing electronics with smart phones. A safer and larger viewing area is achieved when dual-mirroring your smart phone GPS to the 10" Axxera dash radio and backup system. Play your favorite songs from your favorite apps through our 4-channel 5000 watt bluetooth amplifier. Wi Fi Ranger will help keep you connected in more remote areas.

5. SIGHT RITE DASH™

Our dashes are angled 20 degrees forward. This increases the line of sight for the driver, and offers the best road visibility on the market.

6. EVEN COOL DUCT™

Our patented duct system evenly disperses air through the whole coach. And we use Amaco ducting instead of Styrofoam because it's antimicrobial, preventing the growth of bacteria and ensuring a cool, clean coach in even scorching heat.

7. DIGITAL OWNER'S MANUAL

Our owner's manuals are easy to access through the Coachmen website or our free app. Supplemented with videos, PowerPoints, and more, it's got all you need to know about your coach.



SCAN HERE

To see available
Standards, Options
and Features!



Coachmen RV, a Division of Forest River, Inc.,
A Berkshire Hathaway Company

423 N. Main St., P.O. Box 30, Middlebury, IN 46540

To learn more about Coachmen RV and our products and see how Coachmen is making the easy life easier, visit www.coachmenrv.com

CUSTOMER SATISFACTION



www.ForestRiverBuyLocal.com



**24/7 EMERGENCY
ROADSIDE ASSISTANCE
WITH VEHICLE PURCHASE***

TOWING	WINCH-OUT
JUMP-STARTS	MOBILE MECHANIC
TIRE CHANGES	TECHNICAL
FLUID DELIVERY	SUPPORT
LOCKOUT	DEALER LOCATOR
SERVICE	SERVICES



*VALID FOR 1 YEAR FROM DATE OF PURCHASE



Learn More
Scan this barcode using
a QR Reader on your
smart phone to learn
more about Forest River.



A Berkshire Hathaway company.