

2005 | SAVOY SL™



*This is Living®*

 HOLIDAY RAMBLER®



Colton RV  
North Tonawanda, NY 14120  
(716) 694-0188  
(800) 628-4889  
[www.ColtonRV.com](http://www.ColtonRV.com)

Colton RV  
Orchard Park, NY 14127  
(716) 957-3250  
(800) 628-4889  
[www.Coltonrv.com](http://www.Coltonrv.com)

Weights	27RKD	28RLS	29RKS	29RLS	29SKD	30BHS
Gross Vehicle Weight Rating	9,950	9,950	9,950	9,950	9,950	9,950
Hitch Weight	TBD	1,400	1,525	TBD	1,640	1,740
Axle(s) Weight	TBD	5,200	5,200	TBD	5,200	5,200
Unloaded Vehicle Weight	TBD	7,200	7,550	TBD	7,930	7,890
Net carrying Capacity (NCC)	TBD	2,750	2,440	TBD	2,020	2,060
Tire Size	15"	15"	15"	15"	15"	15"
Tire Load Range	D	D	D	D	D	D

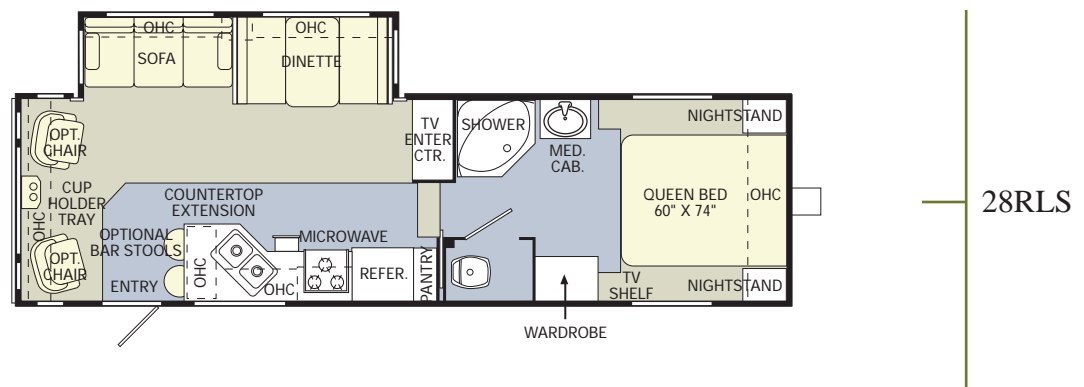
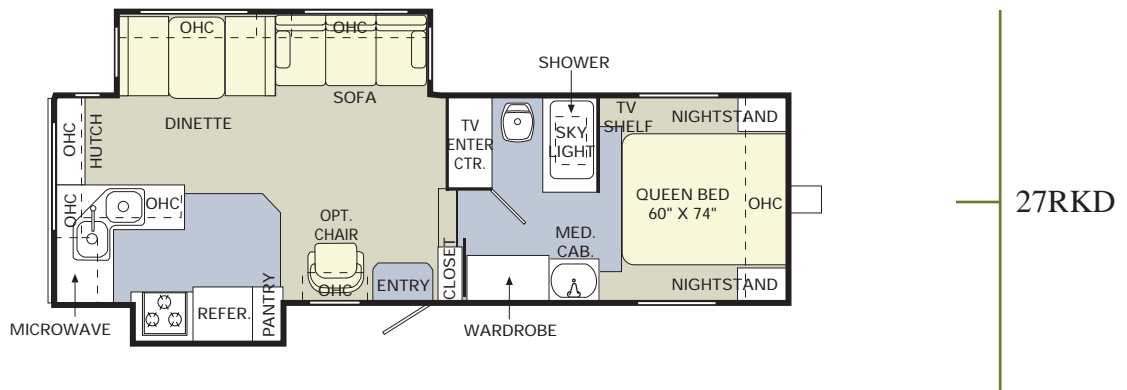
Measurements	27RKD	28RLS	29RKS	29RLS	29SKD	30BHS
Overall Length	28'-11"	30'-3"	30'-11"	30'-11"	30'-11"	32'-3"
Overall Height (Including A/C)	TBD	11'-11"	12'-1"	TBD	12'-1"	11'-10"
Exterior Width	98"	98"	98"	98"	98"	98"

Tank Capacities	27RKD	28RLS	29RKS	29RLS	29SKD	30BHS
Water Heater (Gal.)	6	6	6	6	6	6
Grey Tank (Gal.)	30/30	30/30	30/30	30/30	30/30	30/30
Black Tank (Gal.)	30	30	30	30	30	30
Fresh Tank (Gal.)	40	40	40	40	40	40
L.P. Tank (Gal.)***	30 (2)	30 (2)	30 (2)	30 (2)	30 (2)	30 (2)

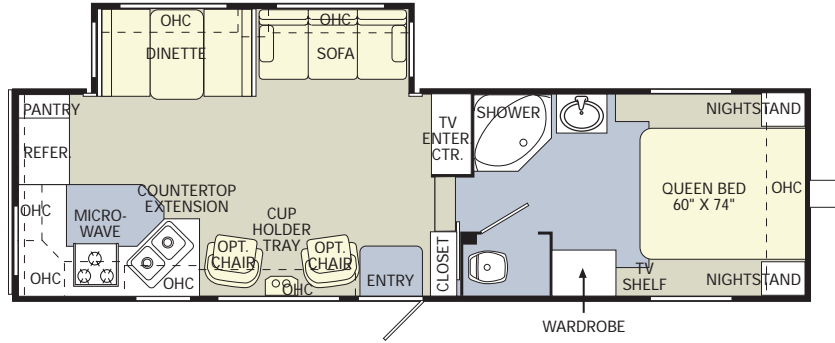
\* Weights may vary by options.

\*\* Variances in the fabrication and installation of the tanks may cause the actual "usable capacity" to be greater or less than the capacities designated above.

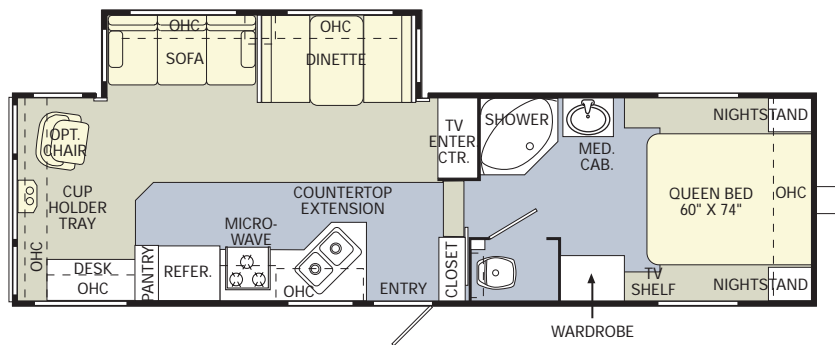
\*\*\* Actual filled LP capacity is 80% of listing due to safety shut-off required on tank.



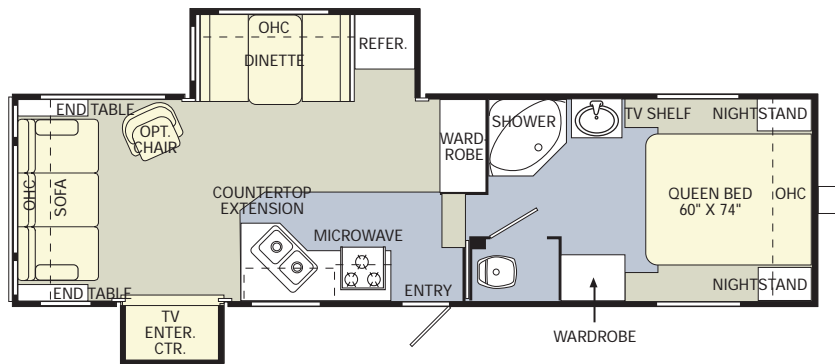
- CARPET
- LINOLEUM



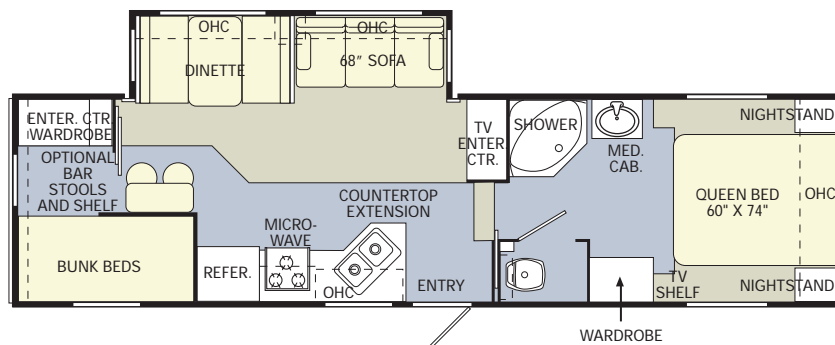
29RKS



29RLS



29SKD



30BHS

- CARPET
- LINOLEUM

Weights	26RKS	29CKS	29FKS	30CKS
Gross Vehicle Weight Rating	9,950	9,950	9,950	9,950
Hitch Weight	710	720	1,060	860
Axle(s) Weight	5,200	5,200	5,200	5,200
Unloaded Vehicle Weight	5,940	6,690	6,860	7,180
Net carrying Capacity (NCC)	4,010	3,260	3,090	2,770
Tire Size	15"	15"	15"	15"
Tire Load Range	D	D	D	D

Measurements	26RKS	29CKS	29FKS	30CKS
Overall Length	27'-8"	31'-9"	31'-9"	32'-3"
Overall Height (Including A/C)	11'-0"	11'-0"	11'-0"	11'-0"
Exterior Width	98"	98"	98"	98"

Tank Capacities	26RKS	29CKS	29FKS	30CKS
Water Heater (Gal.)	6	6	6	6
Grey Tank (Gal.)	30/30	30	30/30	30
Black Tank (Gal.)	30	30	30	30
Fresh Tank (Gal.)	40	40	40	40
L.P. Tank (Gal.)	30 (2)	30 (2)	30 (2)	30 (2)

\* Weights may vary by options.

\*\* Variances in the fabrication and installation of the tanks may cause the actual "usable capacity" to be greater or less than the capacities designated above.

\*\*\* Actual filled LP capacity is 80% of listing due to safety shut-off required on tank.

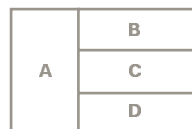
Due to the large variety of options and floorplan arrangements available to our customers, actual weights for each unit can differ significantly. Holiday Rambler provides a weight sticker on each unit we produce which includes that unit's tank capacities and approximate weight. Consult your local Holiday Rambler dealer for unit availability and further information. The information printed in this brochure reflects product design, fabrication, and component parts at the date of printing. The manufacturer reserves the right, at any time, to make changes in product design or material or component specifications as its sole option, without notice. This includes the substitution of components of a different brand or trade name, which will result in comparable performance. All information printed in this brochure is subject to change after the date of printing. Some features shown or mentioned in this brochure are optional and may only be available in selected floorplans. Photographs may show props or decorations that are not standard equipment on Holiday Rambler models. Holiday Rambler, the HR logo and its design, are registered trademarks. All other products and company names are trademarks and/or registered trademarks of their respective holders.

While the color of the towable's exterior and the interior fabrics depicted in this sales brochure are fair and reasonable

depictions, the colors depicted may not be an exact match of the actual colors because of the variances in photo-processing and variances caused by inserting the photographs within the sales brochure. Due to product improvements, changes during the model year and/or transcription errors that may occur, information represented within this brochure may not be accurate at the time of your purchase. If certain information is significant to your purchasing decision, please confirm the information with your dealer prior to submitting your order.

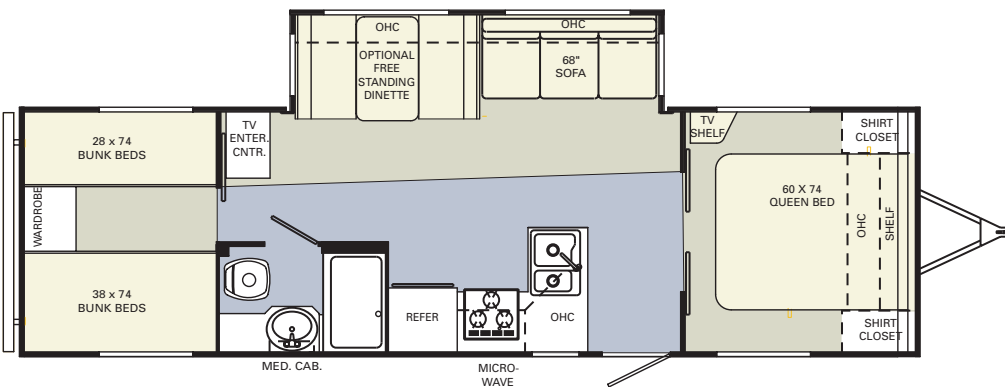
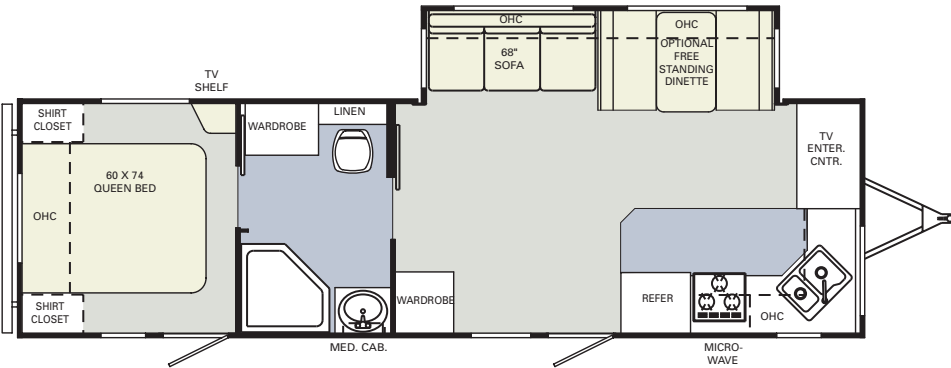
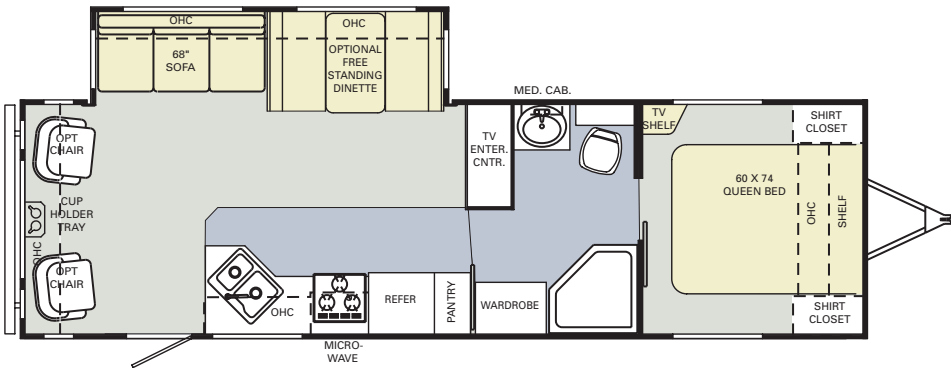
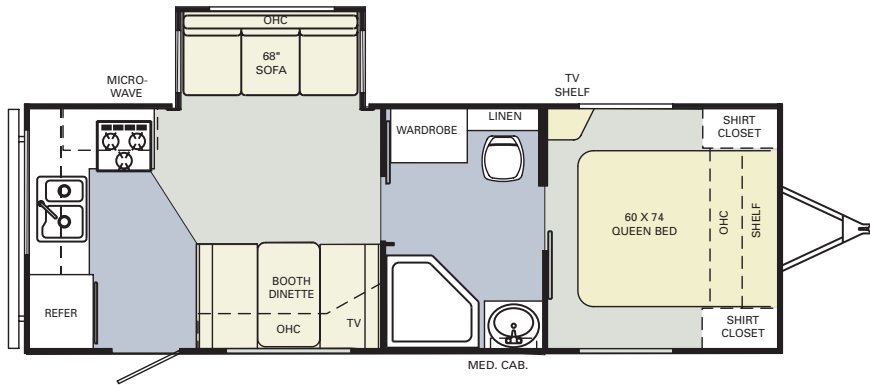
The actual overall length of the recreational vehicle may differ from that indicated in the brochure due to variances in the manufacturing process and/or installed components. The actual length may be greater or less than that indicated.

Component part and appliance manufacturers issue limited warranties covering those portions of the recreational vehicle not covered by the Limited Warranties issued by the Monaco Coach Corporation companies. To learn more on what specific component parts and appliances are excluded from the Limited Warranties issued by the Monaco Coach Corporation companies please contact your selling dealership or Monaco Coach Corporation directly or review the warranty packet inside the recreational vehicle.



- A Sofa
- B Accent
- C Bedspread
- D Carpet

Note: Colors depicted are a reasonable representation though they may not be an exact match of the actual colors due to variances in processing and production. See your dealer for actual fabric and paint chip samples.



- CARPET
- LINOLEUM



BODY AND FRAME CONSTRUCTION

Table with columns FW, TT and rows for STANDARD FEATURES (e.g., 2" Laminated Sidewall Construction) and OPTIONS (e.g., Bike Rack).

Table with columns FW, TT and rows for OPTIONS (e.g., Stabilizer Jacks, Front Electric Jacks).

APPLIANCES

Table with columns FW, TT and rows for STANDARD FEATURES (e.g., 2-Way Refrigerator, Microwave).

Table with columns FW, TT and rows for OPTIONS (e.g., 13" Color TV, 19" Color TV).

INTERIORS

Table with columns FW, TT and rows for STANDARD FEATURES (e.g., Vintage Oak Cabinets, Cathedral Raised Panel Overhead Cabinet Doors).

Table with columns FW, TT and rows for STANDARD FEATURES (e.g., Toilet Tissue Holder, Carpet and Pad in Living Area).

Table with columns FW, TT and rows for OPTIONS (e.g., New Decors: Bristol Bay, Fall River, Cool Water).

FURNITURE

Table with columns FW, TT and rows for STANDARD FEATURES (e.g., Queen Bed with Nightstands, Triple Bunk Beds).

Table with columns FW, TT and rows for OPTIONS (e.g., Hide-A-Bed Sofa, Swivel Barrel Chair).

ELECTRICAL SYSTEMS AND LIGHTS

Table with columns FW, TT and rows for STANDARD FEATURES (e.g., Electrical Management System, AM/FM, CD Stereo).

Table with columns FW, TT and rows for OPTIONS (e.g., Security Light with Switch).

PLUMBING AND LP SYSTEMS

Table with columns FW, TT and rows for STANDARD FEATURES (e.g., Deep Double Bowl Kitchen Sink, Demand Water System).

Table with columns FW, TT and rows for OPTIONS (e.g., Shower with Accordion Door, ABS Tub with Triple Pane Glass Door).

HEATING, VENTS AND AIR CONDITIONING

Table with columns FW, TT and rows for STANDARD FEATURES (e.g., 30M BTU Hydroflame Electronic Ignition Furnace).

Table with columns FW, TT and rows for OPTIONS (e.g., One Carrier High-Capacity Rooftop Air Conditioner).

WINDOWS AND DOORS

Table with columns FW, TT and rows for STANDARD FEATURES (e.g., Main Awning, Tinted Radius Windows).

Table with columns FW, TT and rows for OPTIONS (e.g., Safety Glass, Padded Folding Entry Door Handle).

WINDOW TREATMENTS

Table with columns FW, TT and rows for STANDARD FEATURES (e.g., Pleated Day/Night Shades in Living Area).

Table with columns FW, TT and rows for OPTIONS (e.g., Pleated Day/Night Shades in Living Area and Bedroom).

SAFETY FEATURES

Table with columns FW, TT and rows for STANDARD FEATURES (e.g., Fire Extinguisher, Deadbolt Lock(s)).

Table with columns FW, TT and rows for CAMPING VALUE PACKAGE ITEMS (e.g., Stabilizer Jacks, Front Electric Jacks).