

TIFFIN

2025

CLASS-A

PHAETON





## What's New Summary - Phaeton

### WHAT'S NEW

- Dish Receiver Box Removed when Satellite is Not Installed
- “Built by Tiffin Motorhomes in Red Bay, AL” Added
- Exterior Ladder Standard
- Matte Finish Tile Floor Option Added
- Grey Tank Flush
- Starlink® Roof Prep Standard (Starlink® Install Optional)
- New Midnight Blue and Generation 12 Paint Schemes
- Bordeaux, Waterfall and Midnight Blue Exterior Colors
- Redesigned Pull-out Island with Countertop Extension and Larger Drawers Below
- **No Longer Available**
  - Shadow Cabinets
  - Generation 10 Paint Scheme
  - Sunlit Sand, Maroon Coral, Fire Opal and Euro Blue Exterior Colors

## GET READY FOR A LUXURIOUS TRAVEL EXPERIENCE!

Introducing the new 2025 Tiffin Phaeton! This luxurious vehicle comes equipped with an abundance of upscale amenities as standard features, making it a customer favorite. Relaxing, cooking, or sleeping, you'll discover smartly engineered touches that make every trip a stylish adventure. The Phaeton is available in multiple floor plans, finishes, and a choice of three décor packages, offering a stunning degree of high-end elegance and comfort that is well within reach. Let every journey be an unforgettable one in your new 2025 Phaeton.

Top to bottom: Bedroom Area shown with White Linen Cabinets, Air-coil Sofa Bed and U-shaped Dinette shown with White Linen Cabinets.





## Premium Paint System

The eight-step, full-body paint system features premium grade paints sealed with four layers of clear coat with ultraviolet protection. An additional layer of high-performance film protects the front of the coach and select areas.

Our Generation 11, Generation 12, and Midnight Blue Edition premium paint schemes now give you 11 different ways to make your 2025 Phaeton your very own. To learn more, visit [tiffinmotorhomes.com](https://tiffinmotorhomes.com).

### GENERATION 11



G11 BORDEAUX **NEW**



G11 WATERFALL **NEW**



G11 FROSTED GRANITE

### GENERATION 12 **NEW**



G12 BORDEAUX **NEW**



G12 WATERFALL **NEW**



G12 FROSTED GRANITE

Premium Paint System

GENERATION 11



G11 NASA



G11 WHITE MAHOGANY

GENERATION 12



G12 NASA



G12 WHITE MAHOGANY



MIDNIGHT BLUE EDITION **NEW**

Images shown are representations of paint layouts only and do not reflect all exterior features or options. Colors shown may slightly differ from colors on actual product.



# Floor Plans and Specifications

FLOOR PLAN	Overall Length (approx.) <sup>1</sup>	Wheel Base <sup>2</sup>	Overall Width <sup>1</sup>	Overall Height <sup>3</sup>	Minimum Garage Height	Interior Height	Interior Width	Square Footage (approx.) <sup>4</sup>	Basement Storage (cubic feet, approx.) <sup>5</sup>	GAWR-Front (pounds)	GAWR-Tag Axle (pounds)	GAWR-Rear (pounds)	GVWR (pounds)	Maximum Trailer Weight (pounds) <sup>5</sup>	Hitch Rating (pounds)	GCWR (pounds)
35 CH	37' 9"	222"	101"	13' 3"	14'	83"	96"	375	131	15,660	-	24,000	39,660	10,000	10,000	49,660
37 BH	38' 2"	234"	101"	13' 3"	14'	83"	96"	375	162	15,660	-	24,000	39,660	10,000	10,000	49,660
40 IH	41' 4"	266"	101"	13' 3"	14'	83"	96"	405	232	15,660	-	24,000	39,660	10,000	10,000	49,660
44 OH	45'	310"	101"	13' 3"	14'	83"	96"	440	232	15,660	10,000	20,000	45,660	10,000	10,000	55,660

<sup>1</sup> The approximated coach width and length does not include side-view mirrors and rear ladders.

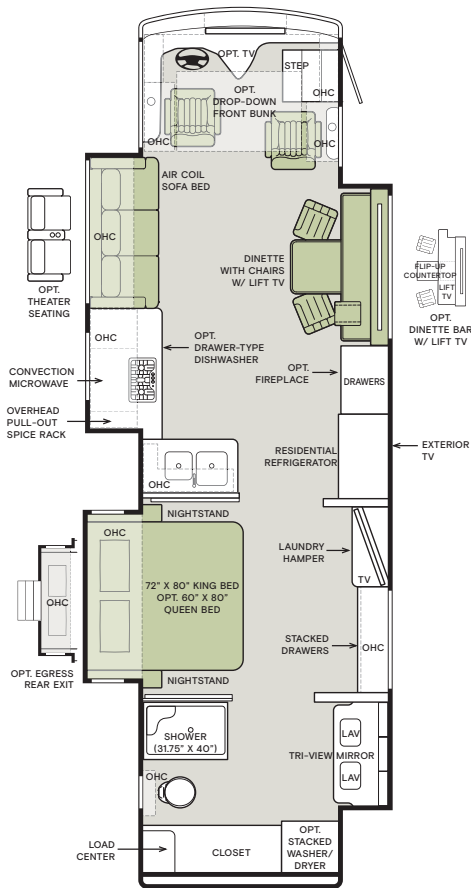
<sup>2</sup> On tag axle coaches, measurement is taken from the center of the steer axle to the centerline between the drive and tag axle.

<sup>3</sup> 37 BH's overall height increased from 12' 7" to 13' 3" due to new XSH Chassis.

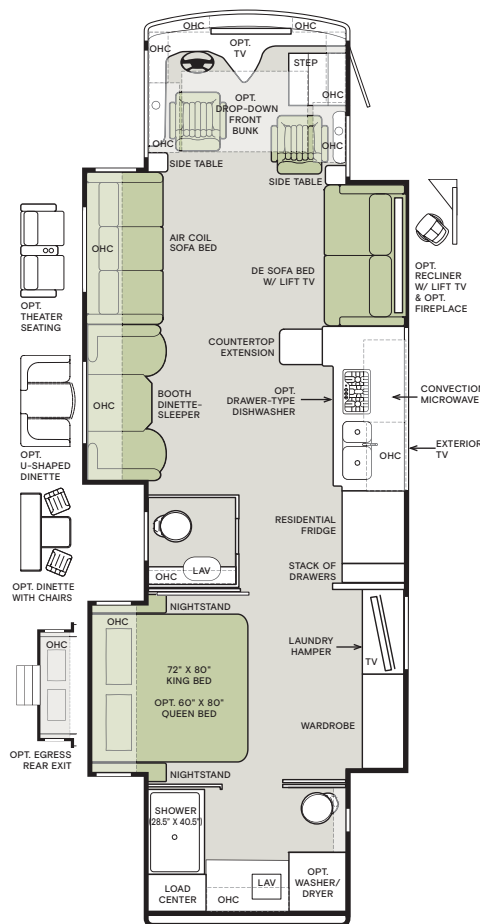
<sup>4</sup> Square footage was calculated with the slide-outs fully extended.

<sup>5</sup> Maximum trailer weight is dependent on the loading and towing variables which include the GVWR, GAWR, and GCWR, as well as adequate trailer brakes.

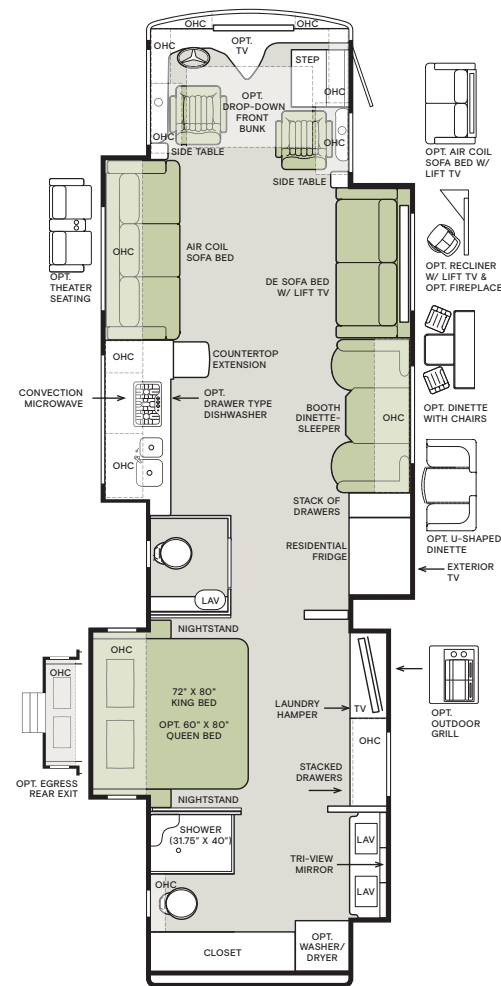
### 35 CH



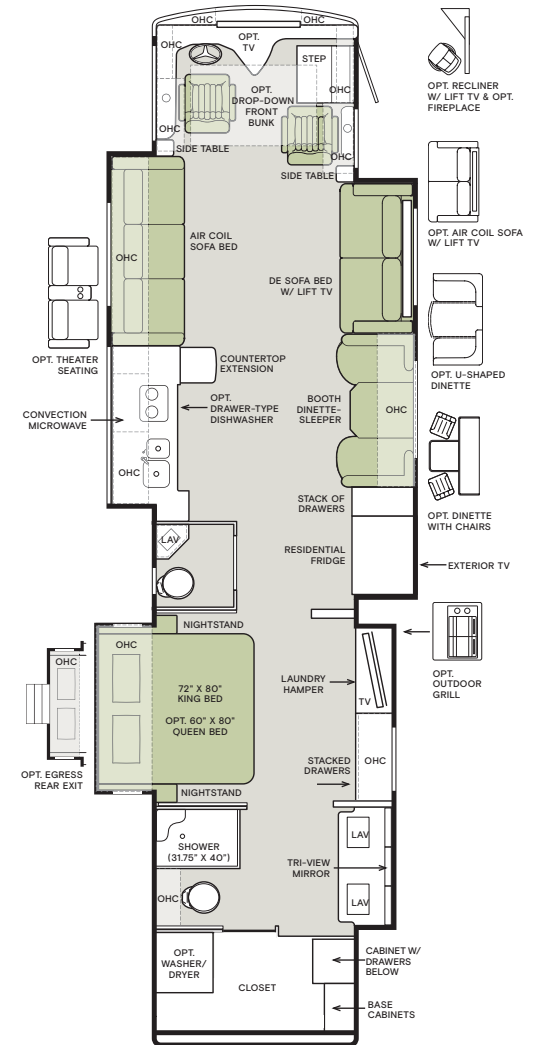
### 37 BH



### 40 IH



### 44 OH



If optional furniture combinations are selected, window locations may vary from diagram shown. All options may not be available in every model. Because of progressive improvements and specifications, standard and optional equipment are subject to change without notice or obligation. For a complete and up-to-date list of available options and specifications, visit [tiffinmotorhomes.com](http://tiffinmotorhomes.com).



## Interior Décor

Make your experience on the road all your own. Express yourself by choosing interior appointments such as cabinet finishes, flooring, and décor packages for every part of your motorhome. In the 2025 Phaeton, you'll be able to travel in style no matter where you go.



MR. BOB TIFFIN RECOMMENDS

TIDE POOL  
DÉCOR PACKAGE  
WITH SANDSTONE CABINETS  
AND EDITORIAL VOLAKAS  
FLOORING.

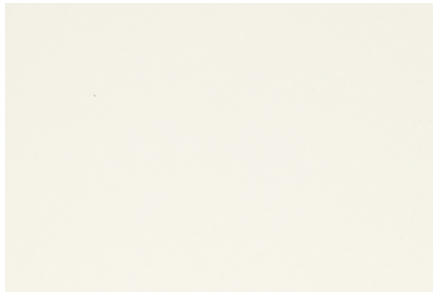
### CABINETS



BLACK TRUFFLE



SANDSTONE



WHITE LINEN



PLATINUM

### FLOORING



MODERN PEAK  
Matte Porcelain Tile

NEW

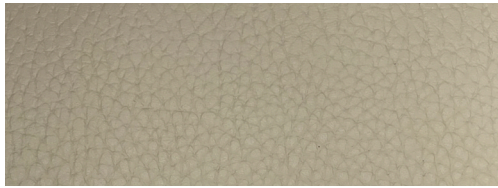


EDITORIAL VOLAKAS  
Glazed Porcelain Tile



Interior Décor Packages

**CAPRI**



ULTRALEATHER® TATAMI MAT



WINDOW TREATMENT



BACKSPLASH



COUNTERTOP

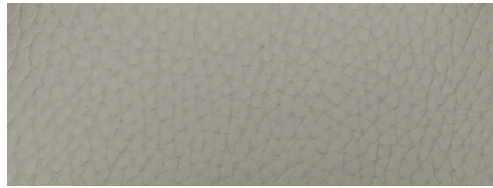


LIVING ROOM

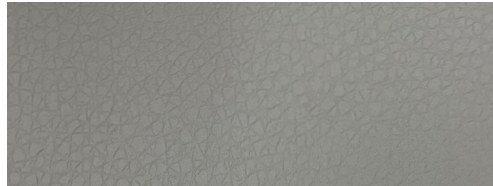


MASTER SUITE

**TIDE POOL**



ULTRALEATHER® RICE PAPER



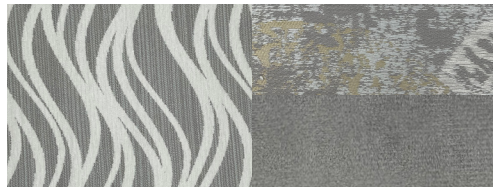
WINDOW TREATMENT



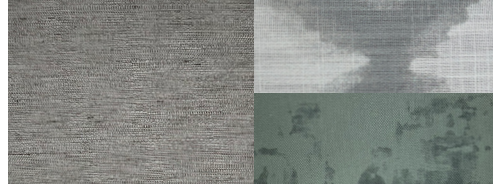
BACKSPLASH



COUNTERTOP

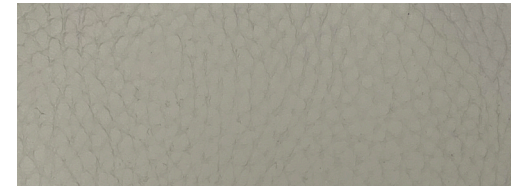


LIVING ROOM

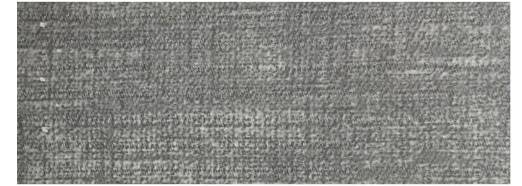


MASTER SUITE

**STALLION**



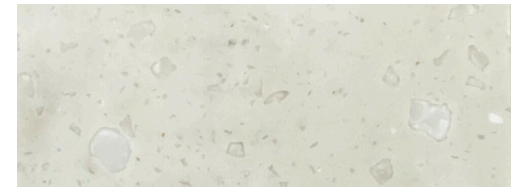
ULTRALEATHER® RICE PAPER



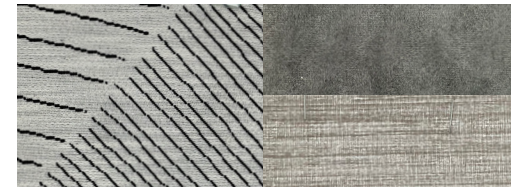
WINDOW TREATMENT



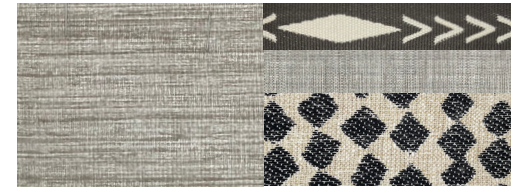
BACKSPLASH



COUNTERTOP



LIVING ROOM



MASTER SUITE



Colton RV & Marine  
3122 Niagara Falls Blvd.  
North Tonawanda, NY 14120  
(716) 694-0188  
www.ColtonRV.com

Colton RV  
3443 Southwestern Blvd.  
Orchard Park, NY 14127  
(716) 957-3250  
www.ColtonRV.com

Colton RV  
489 Bushkill Plaza LN #9665  
Wind Gap, PA 18091  
(610) 863-5239  
www.ColtonRV.com

1

YEAR OR 12,000 MILES  
LIMITED WARRANTY

3

YEAR DELAMINATION  
LIMITED WARRANTY WITH  
NO MILEAGE LIMITATION

5

YEAR CONSTRUCTION  
LIMITED WARRANTY WITH  
NO MILEAGE LIMITATION

1

YEAR COACH  
ROADSIDE SERVICE

∞

ONGOING  
CUSTOMER SUPPORT

FOR SALES CALL 256-356-8661 AND PARTS & SERVICE CALL 256-356-0261 OR VISIT [TIFFINMOTORHOMES.COM](http://TIFFINMOTORHOMES.COM)

105 2ND ST NW RED BAY, AL 35582 [f](#) [i](#)



**TIFFIN**

MOTORHOMES

All trademarks and logos are owned or used under license by Tiffin Motor Homes, Inc. and include, but are not limited to: TIFFIN®, MANY ADVENTURES. ONE DREAM™, ALLEGRO®, ALLEGRO BREEZE®, ALLEGRO RED®, PHAETON®, ALLEGRO BUS®, ZEPHYR®, WAYFARER®, ROUGHING IT SMOOTHLY®, OPEN ROAD®, BYWAY™, and associated logos and emblems. Unauthorized use of any trademark of Tiffin Motor Homes, Inc. is strictly prohibited.  
© Copyright 2024 Tiffin Motor Homes, Inc.

For all information concerning the limited warranty provided by Tiffin, please refer to the full written limited warranty set forth on the Tiffin website or held by our authorized dealerships.  
Please note, some interior furnishings not included. Revised: 5/17/24