

2009

TIFFIN MOTORHOMES PHAETON®



TIFFIN MOTORHOMES

THE 2009 *Phaeton*





MAROON CORAL EXTERIOR



# grand living

Welcome to the motorhome for families with big plans. As the best-selling Tiffin, the Phaeton rules the road with your choice of a Freightliner® or Spartan® chassis paired with a Cummins ISC engine delivering 360 horsepower and 1050 lbs. of torque. But power is only the beginning. For far less than comparable diesel pushers, the Phaeton offers so much more. The 2009 models offer nine different paint scheme options and window awning packages are now standard. The raised rail chassis features exterior swing-out storage doors with gas shocks that swing wide to reveal ample lighted storage and an optional exterior 32" LCD TV that's perfect for tailgating. In short, it's exactly what happens when everyone thinks big.



THE 2009 *Phaeton*



## TIFFIN PHAETON INTERIOR & EXTERIOR





# welcome home

## HAVE SOME ROOM TO ROAM.

The Phaeton's spacious floor plans vary in size from 36 feet to 42 feet. Each is filled with the modern amenities and comforts you'd find at home. Atop the ceramic tile flooring are two spacious sofas, each capable of converting to a bed and affording plenty of sleeping space. In the kitchen, you'll notice the stainless steel, double bowl sink, featuring a Price Pfister™ faucet and built-in soap dispenser. A four-door refrigerator offers plenty of storage for perishables. The dining area features a spacious 72" dinette booth with ample overhead cabinet storage. Also available is an optional freestanding dinette with or without a computer workstation. Many floorplans offer further storage in a mid-section entertainment center with a 32" LCD TV. Once you step inside the Phaeton, you'll quickly feel at home.







MONTECITO INTERIOR  
MEDIUM ALDERWOOD CABINETS  
OPTIONAL RESIDENTIAL REFRIGERATOR SHOWN





# command center

TIFFIN PHAETON COCKPIT

## OWN THE HIGHWAY.

Here, command of the road is at your fingertips. Whether you're sitting in the Flexsteel® Ultra Leather power driver's seat or passenger's seat with foot rest, you're within comfortable reach of the GPS navigational system and the built-in satellite radio, each an option on all Phaeton models. The cockpit monitor offers a clear view of what's behind you via the rear mounted camera, as well as what's beside you, with side cameras that are activated by the turn signals. Convenient driver and passenger side shades operate with a single touch. With a one-piece, tinted windshield with power shade in front of you, the highway ahead never looked better.





## TIFFIN PHAETON BEDROOM

# dream bigger



## A PLACE TO LOSE YOURSELF IN LUXURY.

Whether you're daydreaming or counting sheep, this is where you'll spend the nicest part of your day. A queen-size bed with headboard comes standard with optional Select Comfort™ or memory foam mattresses. Most Phaeton models also feature these options in king-size with dual nightstands. This quiet getaway is pre-wired for a satellite receiver and features a 26" LCD TV. Overhead cabinets and a spacious closet provide plenty of his and her storage room for clothing, shoes and accessories, while an optional stacked washer/dryer lets you remain on the road as long as you like. At the end of the day, it's the perfect place to lose yourself and find yourself at the same time.







MONTECITO INTERIOR  
MEDIUM ALDERWOOD CABINETS



## TIFFIN PHAETON BATHROOM



## more splash



Mini soaps never had it so good. Our 36" shower stalls feature new dual radius doors that deliver ample private bathing space. There's even a private water closet and lavatory. A solid surface vanity and backsplash offer durable elegance along with a skylight featuring a solar cover that slides to minimize the heat. Every model also offers a second lavatory with overhead cabinet storage for toiletries and personal items. When it comes to privacy, we thought of everything, so you don't have to.





THE 2009 *Phaeton*

---



TIFFIN MOTORHOMES





Start your journey by visiting our website. We'd love to hear from you, so give us a call, send us a postcard or stop by our office the next time you pass by Red Bay. Because remember, wherever you go, we go.

Sincerely

DEALER



**TIFFIN MOTORHOMES**

## LET YOUR JOURNEY BEGIN.

Where you go from here is entirely up to you. And when you go, you bring the best warranty and service plan in the motorhome industry along for the ride. For more than 30 years, we've been building quality products for a family of customers who share our love for travel by motorhome. The places they've seen and the experiences they've collected are immeasurable. We're proud to have been a part of their lives. They are the reason that every day, we do everything we can to strengthen the relationship we enjoy with our customers and the relationship they enjoy with the road.

---

### WARRANTIES THAT GO WHEREVER YOU GO.

#### 10-YEAR LIMITED UNITIZED CONSTRUCTION WARRANTY

The structural integrity of the entire coach is guaranteed for the next 10 years. Warranty includes wall separation and inner frame weakness.

#### 5-YEAR LIMITED LAMINATION WARRANTY

We guarantee against all exterior fiberglass delamination or wall separation.

---

105 2nd Street NW, Red Bay, AL 35582

call 256.356.8661 fax 256.356.8219 or visit [tiffinmotorhomes.com](http://tiffinmotorhomes.com)

The following names are registered trademarks of Tiffin Motorhomes: Open Road®, Phaeton®, Allegro®, Allegro Bay®, Allegro Bus®, Zephyr®, Roughing It Smoothly®, and Pusher®.





TIFFIN MOTORHOMES

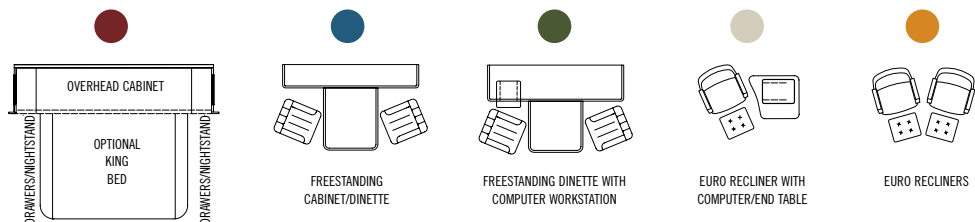
THE 2009 *Phaeton*

SPECIFICATIONS

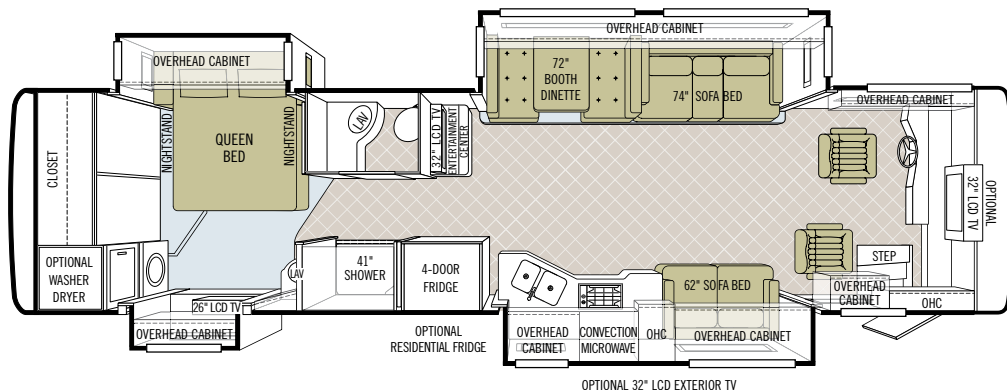


# FLOOR PLANS

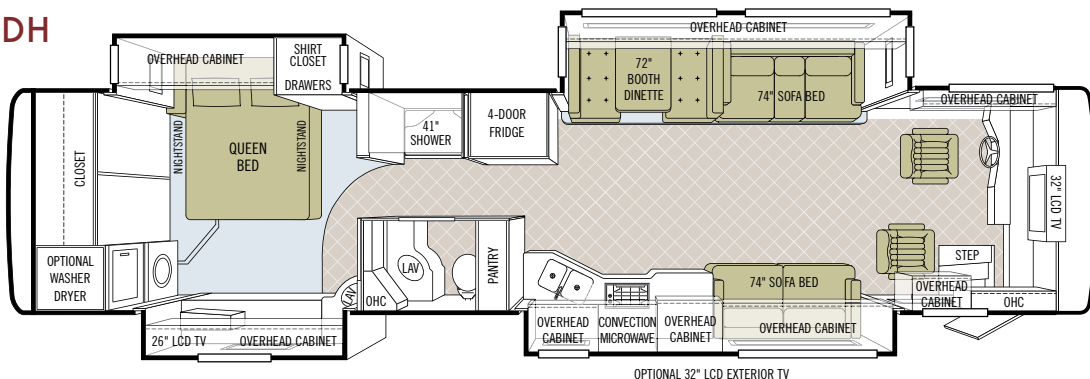
## OPTION KEY



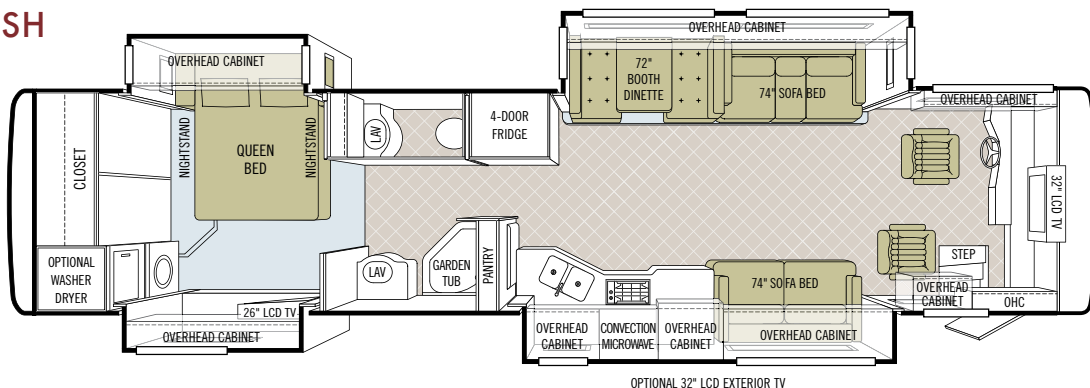
### 36 QSH



### 40 QDH



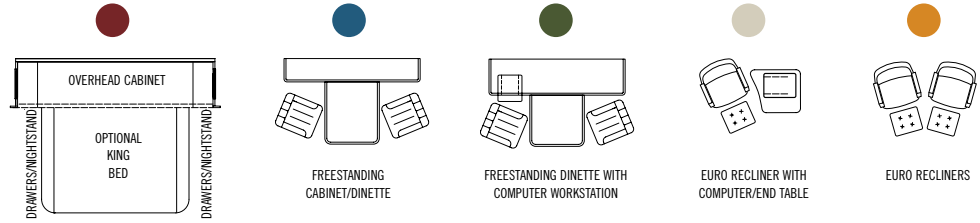
### 40 QSH



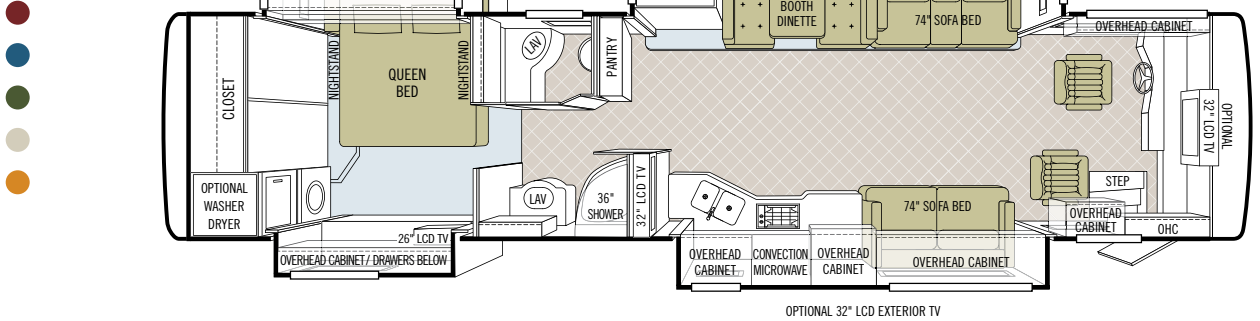


# FLOOR PLANS

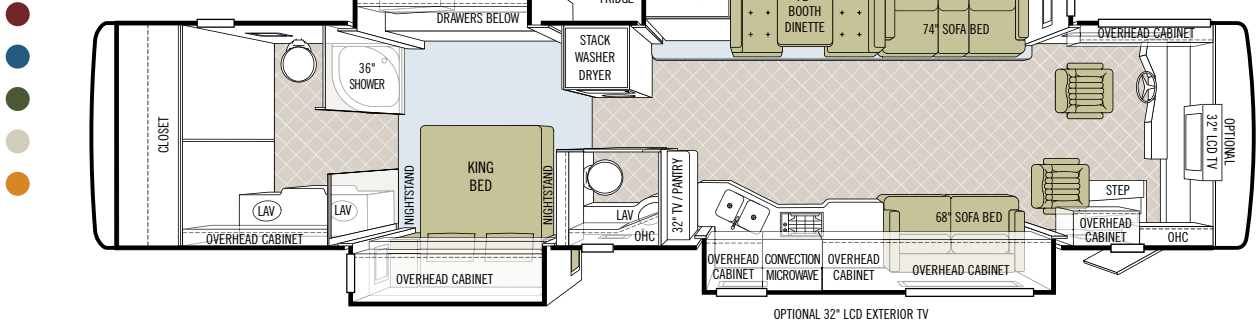
## OPTION KEY



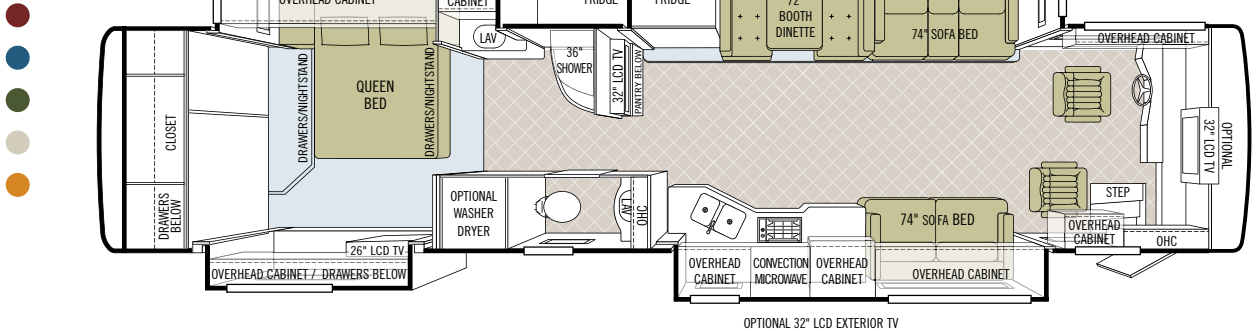
### 40 QTH



### 42 QBH



### 42 QRH





FULL BODY PAINT COLORS



SILVER SAND



MOCHA SILVER SAND



SUNLIT SAND



MOCHA SUNLIT SAND

Note: Mocha is similar in hue to Standard Black, but offers more of a warm chocolate tone.



FULL BODY PAINT COLORS



GOLD CORAL



MOCHA GOLD CORAL



MAROON CORAL



MOCHA MAROON CORAL



NASA

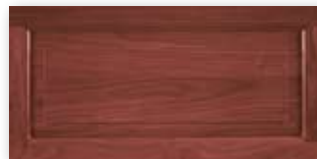
## INTERIOR SPECIFICATIONS

### CABINETS & FABRICS

All cabinet doors are made of solid wood.



Natural Maple



Cherry Bark



Medium Alderwood



Carpet

### ATLANTIC



Bedroom



Bedroom Accent



Sofa/Chair



Living Area Accent



Dinette

### CHATEAU



Bedroom



Bedroom Accent



Sofa/Chair



FS Dinette



Booth Dinette

### MONTECITO



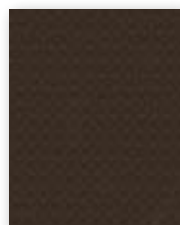
Bedroom



Bedroom Accent



Sofa/Chair



Living Area Accent



Dinette

All cabinet finishes are available in combination with all fabric schemes.



# TECHNICAL SPECIFICATIONS

## AUTOMOTIVE

### STANDARD EQUIPMENT ON ALL MODELS:

- Raised Rail Chassis Frame
- Air Ride (4 Air Bags)
- Aluminum Wheels
- Exhaust Brake
- Adjustable Accelerator & Brake Pedals
- Allison 3000 MH 6-speed Automatic Transmission with Lock-up
- Air Brakes with Automatic Slack Adjusters & ABS
- 55" Wheel Cut
- Fog Lights
- Daytime Running Lights
- VIP 18" Steering Wheel
- Cruise Control
- Emergency Start Switch

CHASSIS	36 QSH	40 QDH	40 QSH	40 QTH	42 QBH	42 QRH
Freightliner Cummins ISC 360 HP/1050 lb. Torque	S	S	S	S	O	O
Spartan Cummins ISC 8.3-liter Engine 360 HP/1050 lb. Torque	NA	NA	NA	NA	O	O
GVWR	32,000	32,000	32,000	32,000	42,600	42,600
GAWR - Front	12,000	12,000	12,000	12,000	12,600	12,600
GAWR - Rear	20,000	20,000	20,000	20,000	20,000	20,000
GAWR - Tag Axle	NA	NA	NA	NA	10,000	10,000
GCWR	42,000	42,000	42,000	42,000	52,600	52,600
Alternator Amps	170	170	170	170	160	160
Wheel Base	228	266	266	266	296	296
Tire Size	275/80R22.5	275/80R22.5	275/80R22.5	275/80R22.5	275/80R22.5	275/80R22.5
Trailer Hitch Capacity (Pounds)	10,000	10,000	10,000	10,000	10,000	10,000
Fuel Tank (Gallons) - Dual Fuel Fill	100	100	100	100	100	100

## OVERALL

	36 QSH	40 QDH	40 QSH	40 QTH	42 QBH	42 QRH
Overall Length - Approximately	36' 9"	40' 5"	40' 5"	40' 5"	42' 6"	42' 5"
Overall Height with Roof Air (Maximum)	12' 7"	12' 7"	12' 7"	12' 7"	12' 7"	12' 7"
Interior Height	84"	84"	84"	84"	84"	84"
Overall Width	101"	101"	101"	101"	101"	101"
Interior Width	96"	96"	96"	96"	96"	96"
Fresh Water (Gallons)	90	90	90	90	90	90
Black Water (Gallons)	45	45	45	45	50	45
Grey Water (Gallons)	70	70	70	70	66	70
LPG Tank (Gallons; can only be filled to 80% capacity)	35.7	35.7	35.7	35.7	35.7	35.7
Minimum Garage Height	13'	13'	13'	13'	13'	13'

## STRUCTURAL

### STANDARD EQUIPMENT ON ALL MODELS:

- Laminated Floor, Sidewall & Roof
- Steel / Aluminum Reinforced Structure
- One-piece Molded Fiberglass Roof Cap

## EXTERIOR

### STANDARD EQUIPMENT ON ALL MODELS:

- Fiberglass Front & Rear Caps
- Atwood Electric Automatic Leveling Jacks
- Large Tinted One-piece Windshield
- Chrome Heated Power Mirrors with Remote Adjustment
- Single Motor Intermittent Wiper
- Gel-coat Fiberglass Walls
- Remote Locking System for Entry Door
- Single Handle Lockable Storage Door Latches
- Exterior Swing-out Storage Doors with Gas Shocks
- Window Awning Package (2 Windows)
- Deadbolt Front Entrance Door
- Double Electric Step
- Dual Pane Windows
- Exterior Patio Light
- Automatic Door Awning
- Automatic Patio Awning
- Slide-out Covers
- Lighted Exterior Storage
- Full Body Paint
- Roof Ladder
- Docking Lights
- Heated Water & Holding Tank Compartments
- Four 6 V Auxiliary Batteries
- Park Telephone Ready
- Black Tank Flush System
- Water Filter
- Wheel Liners
- Custom Mud Flap
- Undercoating
- Dual Fuel Fills
- 110 V Exterior Receptacle
- Analog / Digital TV Antenna
- Power Fantastic® Roof Vent with 3-speed Fan
- A/C Condensation Drains
- Back-up Camera
- Cable Ready TV
- 2000 Watt Inverter with 100-amp Converter & Transfer Switching

## EXTERIOR CONTINUED

AVAILABLE OPTIONS:	36 QSH	40 QDH	40 QSH	40 QTH	42 QBH	42 QRH
Spotlight	O	O	O	O	O	O
One Storage Compartment Slide-out Tray	O	O	O	O	O	O
Two Storage Compartment Slide-out Trays	NA	O	O	O	O	O
Hadley Air Horns	O	O	O	O	O	O
In-motion Satellite Dish	O	O	O	O	O	O
Automatic Satellite Dish	O	O	O	O	O	O
Exterior 32" LCD TV	O	O	O	O	O	O
8.0 kw Onan® Manual Slide-out Generator	S	S	S	S	NA	NA
Two 15,000 BTU Low Profile Roof Air Conditioners with Heat Pump	S	S	S	S	NA	NA
Three Low Profile Roof Air Conditioners with Heat Pump & 10.0 kw Onan® Generator	NA	O	O	O	S	S
HWH Hydraulic Jacks	O	O	O	O	O	O

## DRIVER'S COMPARTMENT

### STANDARD EQUIPMENT ON ALL MODELS:

- Flexsteel® Ultra Leather Power Driver & Passenger Seats with Foot Rest
- Padded Dash
- Custom Infrared Repeater System on all TVs
- Dual Dash Fans
- Snack / Beverage Tray with Drawers
- Dual 12 V Dash Receptacle
- Single CD Player & AM / FM Stereo
- Color Rear Vision Monitor System with Side-view Cameras
- Side-view Cameras Activated by Turn Signals
- Computer Slide-out Tray in Dash
- Powered Windshield Solar / Privacy Shades
- Driver / Passenger Side Window MCD Solar / Privacy Shades
- Fire Extinguisher

AVAILABLE OPTIONS:	36 QSH	40 QDH	40 QSH	40 QTH	42 QBH	42 QRH
Satellite Radio (Requires Subscription)	O	O	O	O	O	O
32" LCD Front Overhead TV	O	S	S	O	O	O
In-dash Stereo / GPS	O	O	O	O	O	O

## LIVING AREA / DINETTE

### STANDARD EQUIPMENT ON ALL MODELS:

- Booth Dinette with Laminate Tabletop & Solid Surface Edging
- Ultra Leather DE Sofa Bed on Passenger's Side
- Cloth DE Sofa Bed on Driver's Side

AVAILABLE OPTIONS:	36 QSH	40 QDH	40 QSH	40 QTH	42 QBH	42 QRH
Freestanding Dinette with Built-in Cabinets	O	O	O	O	O	O
Freestanding Dinette with Computer Workstation	O	O	O	O	O	O
32" LCD TV in Entertainment Center	S	NA	NA	S	S	S

## PASSENGER'S SIDE

AVAILABLE OPTIONS:	36 QSH	40 QDH	40 QSH	40 QTH	42 QBH	42 QRH
Cloth DE Sofa Bed	O	O	O	O	O	O
Leather Air Coil® Hide-a-bed	NA	O	O	O	O	O

## DRIVER'S SIDE

AVAILABLE OPTIONS:	36 QSH	40 QDH	40 QSH	40 QTH	42 QBH	42 QRH
Cloth Air Coil® Hide-a-bed	O	NA	NA	NA	NA	NA
Ultra Leather Air Coil® Hide-a-bed	O	NA	NA	NA	NA	NA
Ultra Leather DE Sofa Bed	O	O	O	O	O	O
Ultra Leather Magic Bed	O	O	O	O	O	O
Cloth Magic Bed	O	O	O	O	O	O
Leather Euro Recliner with Computer / End Table	O	O	O	O	O	O
Two Leather Euro Recliners	NA	O	O	O	O	O



## KITCHEN

### STANDARD EQUIPMENT ON ALL MODELS:

- Solid Surface Countertop with Stainless Steel Sink
- Solid Surface Sink & Stove Covers
- Expand-an-island
- Sink & Stove Cover Racks (Underneath Sink)
- Single Lever Sink Faucet with Sprayer
- Convection Microwave with Exterior Venting
- 4-door Refrigerator with Ice Maker
- 3-burner Cooktop
- Built-in Soap Dispenser

AVAILABLE OPTIONS:	36 QSH	40 QDH	40 QSH	40 QTH	42 QBH	42 QRH
Gas Oven	O	O	O	O	O	O
Residential Stainless Steel Refrigerator with 3000 Watt Inverter Plus Two Additional House Batteries	O	NA	NA	O	O	O

## BATH

### STANDARD EQUIPMENT ON ALL MODELS:

- Medicine Cabinet with Vanity Light
- Skylight in Shower with Sliding Solar Cover
- Solid Surface Vanity Top & Bowl
- Custom Raised Panel Bath Door
- Glass Shower Surround
- Glass Radius Shower Door
- 3-speed Fantastic® Fan
- Pfister® Shower Head

AVAILABLE OPTIONS:	36 QSH	40 QDH	40 QSH	40 QTH	42 QBH	42 QRH
Molded Fiberglass Garden Tub	NA	NA	S	NA	NA	NA
41" Molded Fiberglass Shower	S	S	NA	NA	NA	NA
36" Molded Fiberglass Shower with Radius Door	NA	NA	NA	S	S	S

## BEDROOM

### STANDARD EQUIPMENT ON ALL MODELS:

- Wardrobe with Automatic Lights
- Bed Comforter with Throw Pillows
- Pre-wired for DVD & Satellite Receiver
- Under Bed Storage
- Pillow Top Mattress
- Ceiling Fan
- 26" LCD TV
- Carbon Monoxide Detector
- LPG Leak Detector
- Chest of Drawers with Laundry Hamper

AVAILABLE OPTIONS:	36 QSH	40 QDH	40 QSH	40 QTH	42 QBH	42 QRH
King Bed Mattress	NA	O	O	O	O	O
Select Comfort™ (Dual Control) Bed System - Queen	O	O	O	O	O	O
Select Comfort™ (Dual Control) Bed System - King	NA	O	O	O	O	O
Memory Foam Mattress - Queen	O	O	O	O	O	O
Memory Foam Mattress - King	NA	O	O	O	O	O

## GENERAL INTERIOR

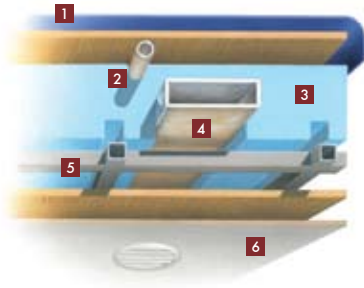
### STANDARD EQUIPMENT ON ALL MODELS:

- 7' Ceilings
- Soft Touch Vinyl Ceilings
- Ceramic Tile Floor in Kitchen, Living Area, Bath & Entry Landing
- Carpeting in Bedroom & Driver's Compartment with Scotchgard®
- Raised Panel Hardwood Cabinet Doors & Drawers
- Two Ducted Furnaces (One 30,000 BTU & One 35,000 BTU)
- Complete Cable Wiring Interfacing with Surround Sound & Satellite Receivers
- Home Theatre Sound System with Concealed Speakers
- Medium Alderwood Cabinetry
- Solar & Privacy Rollease® Shades
- 12 V Fluorescent Lights
- 12 V Disconnect Switch
- Fantastic® Power Roof Vents with 3-speed Fans
- Tank Level Monitor System
- Smoke Detector
- 10-gallon Gas / Electric Water Heater
- Air Driven Step Well Cover

AVAILABLE OPTIONS:	36 QSH	40 QDH	40 QSH	40 QTH	42 QBH	42 QRH
Natural Maple Cabinetry (Simulated)	O	O	O	O	O	O
Cherry Bark Cabinetry (Simulated)	O	O	O	O	O	O
Combo Washer / Dryer	O	O	O	O	O	O
Stacked Washer / Dryer	O	O	O	O	O	O
Central Vacuum Cleaner	O	O	O	O	O	O
	S	S	S	S	S	S

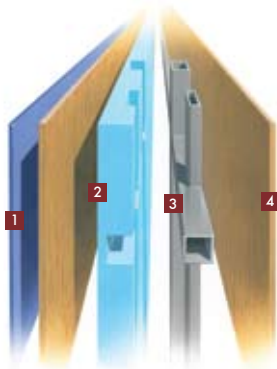
All options may not be available in all models. Because of progressive improvements, specifications, standard & optional equipment are subject to change without notice or obligation.

## CONSTRUCTION SPECIFICATIONS



### ROOF

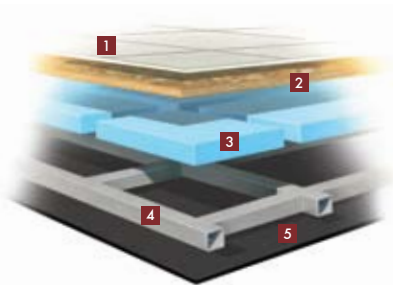
1. One-piece, moisture resistant molded fiberglass roof cap provides insulation and strength and prevents water intrusion
2. A/C Condensation Drainage System that runs internally through the roof insulation and down the sidewalls, redirecting water underneath the motorhome
3. 5½" high-performance thermal insulation
4. Quiet Air Cooling System with return air and cooling exhaust ducts foil-wrapped to deflect UV rays and repel heat
5. Durable, tubular steel roof skeleton
6. Easy-to-clean soft touch vinyl ceiling panel



### SIDEWALL

1. Gel-coat fiberglass outside wall panel
2. High-performance thermal insulation
3. Durable, yet lightweight, tubular aluminum wall skeleton
4. Decorative inside wall panel

All sidewalls are approximately 2" thick.



### FLOOR

1. Ceramic tile floor bonded to high-impact oriented strand board
2. High-level engineered oriented strand board
3. High-performance thermal insulation
4. Durable, tubular steel floor skeleton
5. Woven moisture barrier material

**10-YEAR LIMITED UNITIZED CONSTRUCTION WARRANTY** The structural integrity of the entire coach is guaranteed for the next 10 years. Warranty includes wall separation and inner frame weakness.

**5-YEAR LIMITED LAMINATION WARRANTY** We guarantee against all exterior fiberglass delamination or wall separation.

TIFFIN MOTORHOMES, INC. 105 2ND STREET NW RED BAY, AL 35582  
CALL 256.356.8661 FAX 256.356.8219  
FOR PARTS AND SERVICE CALL 256.356.0261

For more specifics on what makes a Tiffin Motorhome, go to [tiffinmotorhomes.com](http://tiffinmotorhomes.com)

The following names are registered trademarks of Tiffin Motorhomes: Open Road®, Phaeton®, Allegro®, Allegro Bay®, Allegro Bus®, Zephyr®, Roughing It Smoothly®, and Pusher®.