



FOREST RIVER
WILDWOOD
HERITAGE GLEN

HYPER-LYTE TRAVEL TRAILERS



17RBHL

UVW: 4,903 lb. • Length: 23' 5"



19RBHL

UVW: 4,788 lb. • Length: 23' 10"



20BHHL

UVW: 5,593 lb. • Length: 26' 0"



22RBHL

UVW: 5,413 lb. • Length: 27' 11"



23BHHL

UVW: 6,063 lb. • Length: 30' 0"



24RLHL

UVW: 5,883 lb. • Length: 30' 2"



25RBHL

UVW: 6,038 lb. • Length: 31' 0"



26BHHL

UVW: 6,688 lb. • Length: 33' 9"



29XBHL

UVW: 7,173 lb. • Length: 36' 10"



26BHHL

Shown in Mica Decor

TRAVEL TRAILERS



270FKS

UVW: 7,818 lb. • Length: 33' 9"



271RL

UVW: 7,738 lb. • Length: 34' 7"



273RL

UVW: 7,893 lb. • Length: 34' 7"



283RK

UVW: 7,023 lb. • Length: 34' 8"



308RL

UVW: 9,063 lb. • Length: 38' 7"



314BUD

UVW: 8,583 lb. • Length: 39' 3"



310BHI

UVW: 9,088 lb. • Length: 38' 8"



270FKS

Shown in Newport Decor — Pictured with Optional Free-Standing Dinette

FIFTH WHEELS



286RL

UWV: 9,229 lb. • Length: 33' 11"



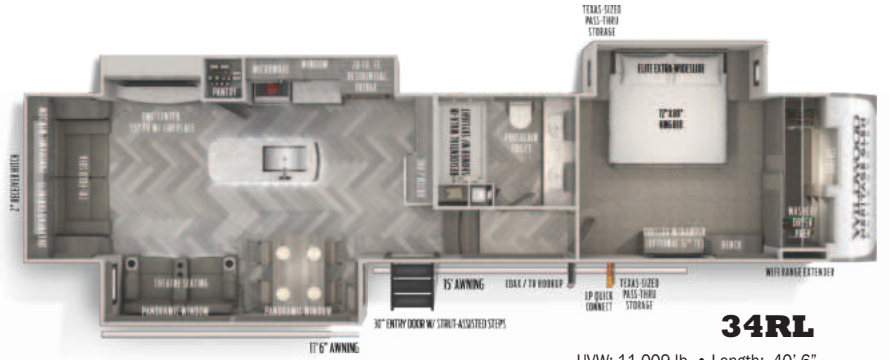
290RL

UWV: 9,919 lb. • Length: 34' 11"



295BH

UWV: 9,334 lb. • Length: 36' 0"



34RL

UWV: 11,009 lb. • Length: 40' 6"



36FL

UWV: 12,624 lb. • Length: 43' 9"



353BED

UWV: 12,634 lb. • Length: 43' 4"



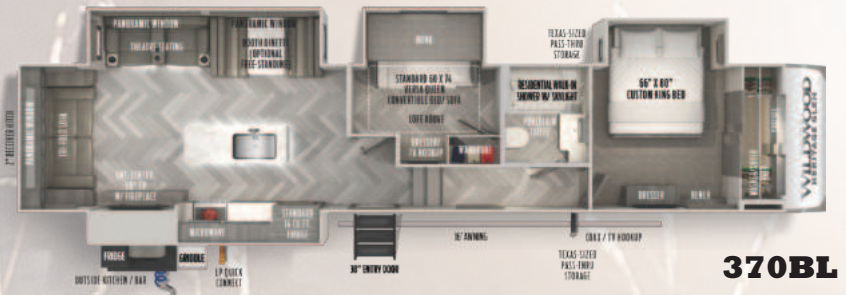
356QB

UWV: 11,249 lb. • Length: 43' 0"



369BL

UWV: 11,669 lb. • Length: 43' 0"



370BL

UWV: 11,524 lb. • Length: 42' 7"



378FL

UWV: 11,589 lb. • Length: 43' 6"



ELITE SERIES FIFTH WHEELS

ELITE FIFTH WHEEL SERIES

UPGRADED OPTIONS PACKAGE

- High Rise Faucet with Pull Out Sprayer
- Spare Tire & Carrier
- Exterior Ladder
- Ceiling Paddle Fan with Light & Wall Switch
- 15,000 A/C Ducted with Quick Cool
- Washer/Dryer Prep with 50 Amp Service & Wire/Brace For 2nd A/C
- Ivory Performance Colored Exterior Fiberglass with Smoked Quartz Metallic Accents
- 10 Gal. Gas/Elec. DSI Water Heater
- Central Switch Center

VIP PACKAGE

- Power Mini-Max Fan In Kitchen
- Luxurious Solid Surface Kitchen Countertops
- Designer's Choice Bedding Package & Headboard
- 1.7 cu. ft. Over-the-range 30" Residential Microwave
- Panoramic Tinted Safety Glass Windows Throughout
- Residential Gas Cooktop W/ Built in Oven & LED Lit Knobs
- King Wi-Fi Router/ Range Extender
- 72" x 80" Residential King Mattress
- 12V Heat Pads On All Holding Tanks
- 30" Entry Door W/ Strut-Assist Easy Lift Entry Steps
- Porcelain Toilet

STANDARDS AND OPTIONS

| INTERIOR FEATURES | HL | TT | SW | ELITE |
|---|----|---------------|----|-------|
| Matte Black Cabinet Hardware | S | S | S | S |
| Stackable Washer/Dryer Prep | — | Select Models | S | S |
| Herringbone Designer's Choice Congoleum Flooring | S | S | S | S |
| Hudson Wood Agreeable Grain Cabinetry | S | S | S | S |
| Porcelain Toilet | S | S | S | S |
| Residential Single Bowl Undermount Sink | S | S | S | S |
| Hidden Hinges On Cabinet Doors | S | S | S | S |
| 10.7 Cu. Ft. Refrigerator (12V) | S | S | — | — |
| Optional 8 Cu. Ft. Gas/Electric Refrigerator | O | O | — | — |
| 14 Cu. Ft. French Door Refrigerator W/ Inverter | — | — | S | — |
| Optional 13 Cu. Ft. Gas/Electric French Door Refrigerator | — | — | O | O |
| Interior Grab Handle At Entry Door | S | S | S | S |
| Yacht Trim Ceiling Finishes | S | S | S | S |
| Full Length Cathedral Ceilings | — | S | S | S |

| EXTERIOR FEATURES | HL | TT | SW | ELITE |
|--|----|----|----|-------|
| Texas-Sized Pass-Thru Storage | S | S | S | S |
| Barrelled Roof with PVC Membrane | S | S | S | S |
| High Definition Graphics Package | S | S | S | S |
| LED Marker Lights | S | S | S | S |
| LP Quick Connect | S | S | S | S |
| Lend-A-Hand Entry Grab Handle | S | S | S | S |
| Wide Stance Axle System | S | S | — | — |
| 30" Wide Main Entry Door | S | S | S | S |
| 7-Way "Rain Defense" Plug Holder (Front Frame) | S | S | S | S |
| High Efficiency A/C Cooling System | S | S | S | S |
| Upgraded Insulation Package | S | S | S | S |
| "Aluma Frame" Laminated Sidewalls And Floor | S | S | S | S |
| Heated And Enclosed Underbelly | S | S | S | S |
| Shaded Pet Tether / Security Hook | S | S | S | S |
| TV Bracket W/ Cable And 12V Outlet | S | S | S | S |
| 2" Receiver Hitch for Storage Racks (N/A 356QB, 378FL, 36FL) | — | — | S | S |
| Roof-Mounted Solar Prep (Solar Package Optional) | S | S | S | S |

LEGEND

| | |
|---------------|---|
| STANDARD | S |
| OPTIONAL | O |
| NOT AVAILABLE | — |

**SEE BACK PAGE FOR FIFTH WHEEL PACKAGES*

HYPER-LYTE

UPGRADED OPTIONS PACKAGE

- Tri-Fold Sleeper Sofa or Theater Sofa (20BHHL, 23BHHL: Jiffy Sofa with Oversized U-Shaped Dinette)
- Black-Accented Upgraded Aluminum Wheels
- Spare Tire & Carrier
- Outside Shower
- Ivory Performance Colored Exterior Fiberglass with Smoked Quartz Metallic Accents
- Central Switch Center

VIP PACKAGE

- XL Max-Tint Panoramic Windows in Main Slide
- 12V Heat Pads on All Holding Tanks
- High Rise Faucet with Pull Out Sprayer
- Recessed Glass Stove Top Cover
- Midnight Glass Range Hood
- Midnight Glass Microwave
- Back-up Camera and Roof-Mounted Solar Panel Prep
- Designer's Choice Luxury Comforter
- 32" LED TV w/ Bluetooth CD/DVD/FM/USB Player & Bar Speakers
- Friction Door Hinge
- Porcelain Toilet
- Baggage Door Magnets & Easy Pull Slam Latches
- LED Awning, Marker & Tail Lights
- Step Above Aluminum Entry Steps (Main Entry Door)
- Power Tongue Jack with LED Docking Light

TRAVEL TRAILERS

UPGRADED OPTIONS PACKAGE

- High Rise Faucet with Pull-Out Sprayer
- Spare Tire & Carrier
- Outside Shower
- 15,000 A/C Ducted W/ Quick Cool
- Ivory Performance Exterior Fiberglass with Smoked Quartz Metallic Accents
- Central Switch Center

VIP PACKAGE

- XL Max-tint Panoramic Window Package in Main Slide
- 12V Heat Pads on All Holding Tanks
- Recessed Glass Stove Top Cover
- Midnight Glass Range Hood
- Midnight Glass Microwave
- Porcelain Toilet
- 50" LED TV with Bluetooth CD/DVD/FM/USB Player & Bar Speakers
- Stainless Steel, Single Bowl Undermount Sink with Roll Up Sink Cover
- Friction Door Hinge
- Power Stabilizer and Tongue Jacks
- 32" Glass Front Electric Fireplace
- Baggage Door Magnets & Easy Pull Slam Latches
- Step Above Aluminum Entry Steps (Main Entry Door)
- LED Awning, Front Cap, Marker & Tail Lights
- Back-up Camera and Roof-Mounted Solar Panel Prep

| MODEL | EXTERIOR LENGTH | EXTERIOR WIDTH | EXTERIOR HEIGHT | HITCH WEIGHT | UVW | CCC | TIRES |
|--------------------|-----------------|----------------|-----------------|--------------|------------|-----------|-------|
| HYPER LYLES | | | | | | | |
| 17RBHL | 23' 5" | 96" | 10' 10" | 545 lb. | 4,903 lb. | 2,642 lb. | 15" |
| 19RBHL | 23' 10" | 96" | 10' 10" | 520 lb. | 4,788 lb. | 2,732 lb. | 15" |
| 20BHHL | 26' 0" | 96" | 10' 10" | 780 lb. | 5,593 lb. | 2,187 lb. | 15" |
| 22RBHL | 27' 11" | 96" | 10' 10" | 570 lb. | 5,413 lb. | 2,157 lb. | 15" |
| 23BHHL | 30' 0" | 96" | 10' 10" | 725 lb. | 6,063 lb. | 1,537 lb. | 15" |
| 24RLHL | 30' 2" | 96" | 10' 10" | 810 lb. | 5,883 lb. | 1,927 lb. | 15" |
| 25RBHL | 31' 0" | 96" | 10' 10" | 640 lb. | 6,038 lb. | 1,602 lb. | 15" |
| 26BHHL | 33' 9" | 96" | 10' 10" | 890 lb. | 6,688 lb. | 3,002 lb. | 15" |
| 29XBHL | 36' 10" | 96" | 10' 10" | 965 lb. | 7,173 lb. | 2,592 lb. | 15" |
| TRAVEL TRAILERS | | | | | | | |
| 270FKS | 33' 9" | 96" | 11' 2" | 1,125 lb. | 7,818 lb. | 2,107 lb. | 15" |
| 271RL | 34' 7" | 96" | 11' 2" | 1,070 lb. | 7,738 lb. | 2,132 lb. | 15" |
| 273RL | 34' 7" | 96" | 11' 2" | 1,055 lb. | 7,893 lb. | 1,962 lb. | 15" |
| 283RK | 34' 8" | 96" | 11' 2" | 720 lb. | 7,023 lb. | 2,497 lb. | 15" |
| 308RL | 38' 7" | 96" | 11' 2" | 1,225 lb. | 9,063 lb. | 2,362 lb. | 15" |
| 310BHI | 38' 8" | 96" | 11' 2" | 1,200 lb. | 9,088 lb. | 2,312 lb. | 15" |
| 314BUD | 39' 3" | 96" | 11' 2" | 1,150 lb. | 8,583 lb. | 1,527 lb. | 15" |
| FIFTH WHEELS | | | | | | | |
| 286RL | 33' 11" | 96" | 12' 7" | 1,870 lb. | 9,229 lb. | 1,601 lb. | 15" |
| 290RL | 34' 11" | 96" | 12' 7" | 1,825 lb. | 9,919 lb. | 2,106 lb. | 16" |
| 295BH | 36' 0" | 96" | 12' 7" | 1,985 lb. | 9,334 lb. | 2,851 lb. | 16" |
| 353BED | 43' 4" | 96" | 13' 4" | 2,115 lb. | 12,634 lb. | 2,866 lb. | 16" |
| 356QB | 43' 0" | 96" | 13' 2" | 1,790 lb. | 11,249 lb. | 2,541 lb. | 16" |
| 369BL | 43' 0" | 96" | 13' 1" | 2,150 lb. | 11,669 lb. | 2,481 lb. | 16" |
| 370BL | 42' 7" | 96" | 13' 1" | 2,275 lb. | 11,524 lb. | 2,751 lb. | 16" |
| 378FL | 43' 6" | 96" | 13' 6" | 2,140 lb. | 11,589 lb. | 2,551 lb. | 16" |
| ELITE FIFTH WHEELS | | | | | | | |
| 34RL | 40' 6" | 96" | 13' 2" | 2,070 lb. | 11,009 lb. | 3,061 lb. | 16" |
| 36FL | 43' 9" | 96" | 13' 4" | 2,120 lb. | 12,624 lb. | 2,876 lb. | 16" |

SPECIFICATIONS

FIFTH WHEELS

UPGRADED OPTIONS PACKAGE

- High Rise Faucet with Pull-Out Sprayer
- Spare Tire & Carrier
- Ceiling Paddle Fan with Light & Wall Switch
- 15,000 A/C Ducted with Quick Cool
- Washer/Dryer Prep with 50 Amp Service & Wire/Brace for 2nd A/C
- Exterior Ladder
- Ivory Performance Colored Exterior Fiberglass with Smoked Quartz Metallic Accents
- 10 Gal. Gas/Elec. DSI Water Heater
- Central Switch Center

VIP PACKAGE

- XL Max-tint Panoramic Window Package in Main Slide
- 12V Heat Pads on All Holding Tanks
- Recessed Glass Stove Top Cover
- Midnight Glass Range Hood
- Midnight Glass Microwave
- Back-up Camera and Roof Mounted Solar Panel Prep
- Solid-Step Aluminum Entry Steps (Main Entry Door)
- Power Stabilizer Jacks And Landing Gear
- 50" LED TV with Bluetooth CD/DVD/FM/USB Player & Bar Speakers (40" TV 295BH)
- Step Above Aluminum Entry Steps (Main Entry Door)
- Baggage Door Magnets & Easy Pull Slam Latches
- LED Awning, Front Cap, Marker & Tail Lights
- Friction Door Hinge
- Stainless Steel, Single Bowl Undermount Sink with Roll Up Sink Cover
- Porcelain Toilet
- Glass Front Electric Fireplace

OPTIONAL SOLAR PACKAGE: AVAILABLE ON ALL MODELS

- 100W Solar Panel
- 30Amp Charge Controller
- One (1) Deep Cycle Battery
- Y Connector to Easily Expand up to 500W of Panels



For detailed specs, pictures & 360 Tours, visit forestriverinc.com/wildwood OR Scan the QR code!

THE WILDWOOD FAMILY OF PRODUCTS



FROG™ the Forest River Owners' Group!

FREE MEMBERSHIP
to Forest River Owners' Group

www.forestriverfrog.com



WWW.KOACARECAMPS.ORG



Fighting + Making
Cancer + Memories

**24/7 EMERGENCY
ROADSIDE ASSISTANCE
WITH VEHICLE PURCHASE***

| | |
|----------------|-----------------|
| TOWING | WINCH-OUT |
| JUMP-STARTS | MOBILE MECHANIC |
| TIRE CHANGES | TECHNICAL |
| FLUID DELIVERY | SUPPORT |
| LOCKOUT | DEALER LOCATOR |
| SERVICE | SERVICES |

SAFERIDERY
MOTOR CLUB

*VALID FOR 1 YEAR FROM DATE OF PURCHASE



PRE-DELIVERY INSPECTION FACILITY

20,000 square feet of quality assurance. The bare essentials for a premium product. This state-of-the-art facility gives immediate daily feedback to production for quality assurance in every unit built.

CUSTOMER SATISFACTION



www.ForestRiverBuyLocal.com

UVW (Unloaded Vehicle Weight)* is the typical weight of the unit as manufactured at the factory. It includes all weight at the unit's axle(s) and tongue or pin and LP Gas. The UVW does not include cargo, fresh potable water, additional optional equipment or dealer installed accessories. *Estimated Average based on standard build optional equipment.

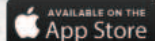
CCC (Cargo Carrying Capacity) is the amount of weight available for fresh potable water, cargo, additional optional equipment and accessories. CCC is equal to GVWR minus UVW. Available CCC should accommodate fresh potable water (8.3 lbs per gallon). Before filling the fresh water tank, empty the black and gray tanks to provide for more cargo capacity. Estimated average based on standard build optional equipment. See back page for additional specification definitions.

GVWR (Gross Vehicle Weight Rating) - is the maximum permissible weight of the unit when fully loaded. It includes all weights, inclusive of all fluids, cargo, optional equipment and accessories. For safety and product performance do NOT exceed the GVWR.

GAWR (Gross Axle Weight Rating) is the maximum permissible weight, including cargo, fluids, optional equipment and accessories that can be safely supported by a combination of all axles.

Each Forest River RV is weighed at the manufacturing facility prior to shipping. A label identifying the unloaded vehicle weight of the actual unit and the cargo carrying capacity is applied to every Forest River RV prior to leaving our facilities. The load capacity of your unit is designated by weight, not by volume, so you cannot necessarily use all available space when loading your unit.

All information contained in this brochure is believed to be accurate at the time of publication. However, during the model year, it may be necessary to make revisions and Forest River, Inc., reserves the right to make all such changes without notice, including prices, colors, materials, equipment and specifications as well as the addition of new models and the discontinuance of models shown in this brochure. Therefore, please consult with your Forest River, Inc., dealer and confirm the existence of any materials, design or specifications that are material to your purchase decision. ©2021 Heritage Glen, a Division Of Forest River, Inc., a Berkshire Hathaway Company. All Rights Reserved.



Download the Forest River mobile app or visit our dynamic online manual to enhance your ownership experience. These interactive options provide incredible ease and insight into use, maintenance and enjoyment of your Forest River product. From "How-To" videos, pictures and illustrations of various components, systems and features, to fully searchable content and downloadable PDFs for individual component owner's manuals, answers are always just a click away.

View manual at <https://forestriverinc.help/#/forestriverv/vehicles/2022> or download our FREE app from the App Store or Google Play!



Learn More
Scan this barcode using a QR Reader on your smart phone to learn more about Forest River.



A Berkshire Hathaway company.

Colton RV & Marine
3122 Niagara Falls Blvd
North Tonawanda, NY 14120
(716) 694-0188
www.ColtonRV.com

DEALER