

PALAZZO®

EVERY INCH OF SPACE, INSIDE AND OUT, IS DESIGNED TO MAKE LIFE ON THE ROAD MORE ENJOYABLE. WELCOME TO THE PALAZZO.



 **THOR**
MOTOR COACH

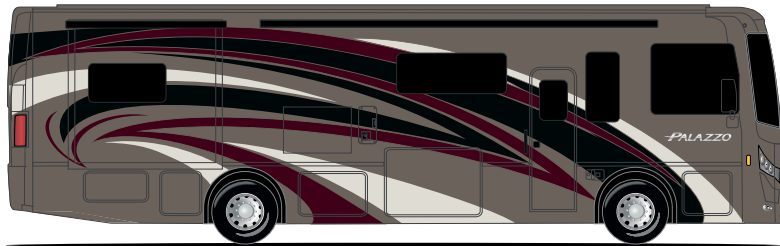


PALAZZO[®]

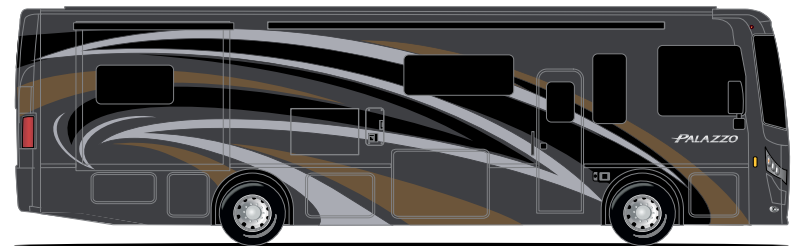
Functional, creative, and most of all comfortable. Every detail says “welcome home.” With a wide variety of floor plans to choose from, you and your family will find the perfect fit for you adventures. Every inch of space, inside and out, is designed to make life on the road more enjoyable.



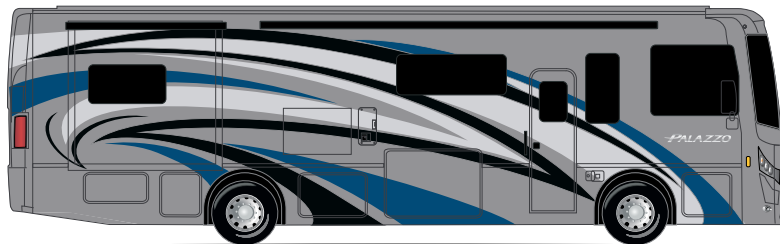
EXTERIOR OPTIONS



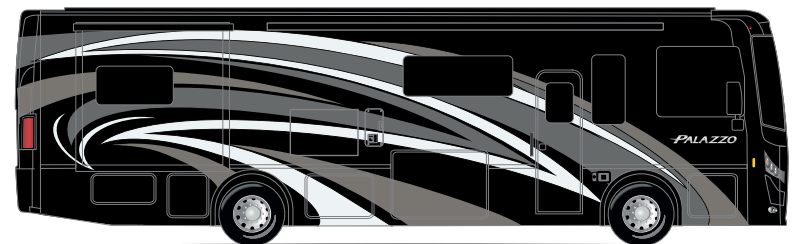
CYPRESS POINT



ERIN HILLS



HARBOUR TOWN



KAPALUA



A | CUMMINS® ISB 6.7L DIESEL ENGINE

The Palazzo's Cummins® ISB 6.7L diesel engine is mated to a 6-Speed Allison automatic transmission, providing immense horsepower and torque. This combination delivers maximum performance, reliability and durability.

B | FULL-BODY PAINT

A striking exterior graphics design provides a jaw-dropping experience. The paint process includes alternating layers of paint and clear coat to provide a silky exterior finish.

C | LARGE PASS-THROUGH STORAGE

Multiple compartments provide plenty of space to take everything you need. A larger pass-through compartment that includes a sliding tray making it easier to reach your stored items.

D | FRAMELESS DUAL PANE WINDOWS

Sleek, and functionality. The dual pane windows are hinged to open outward for ventilation, even in rainy weather.

E | POWER PATIO AWNING WITH INTEGRATED LED LIGHTING

Simple push button operation extends and retracts the awning with ease. The integrated LED lighting illuminates the camp area, allowing for nighttime use.

F | 55° WHEEL CUT

With a 55-degree wheel cut, the Palazzo can maneuver in and out of tight spaces with ease. You can feel confident behind the wheel wherever your travels may take you.

G | SIDE VISION CAMERAS

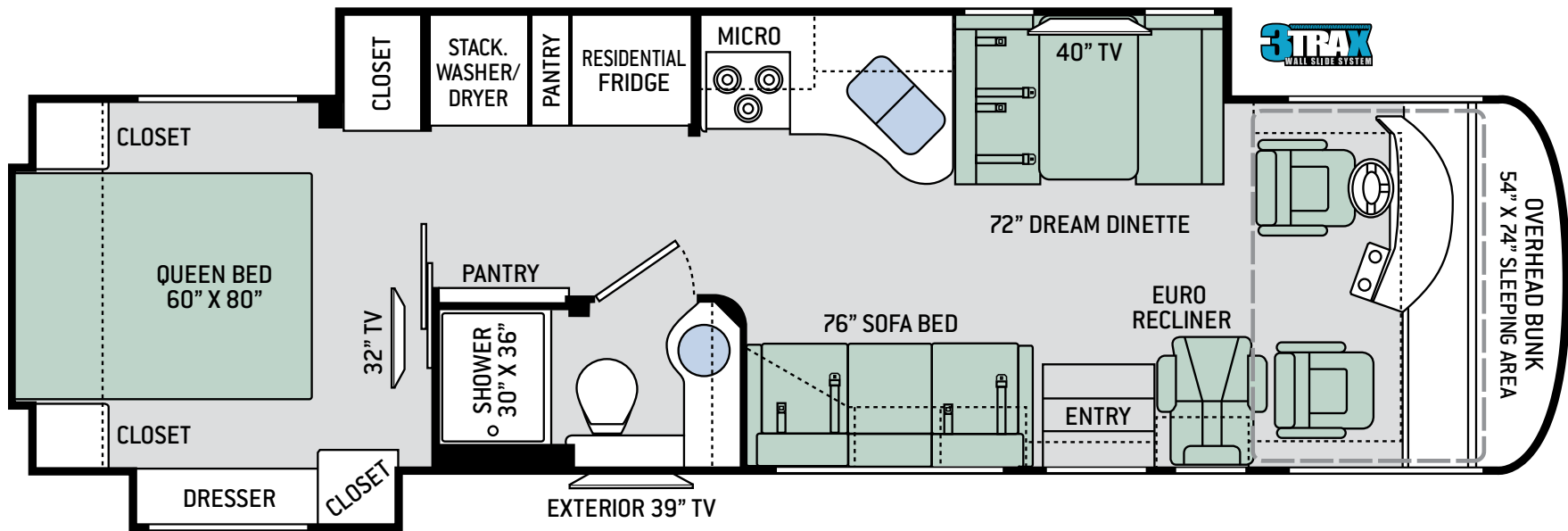
Side vision cameras, integrated into the exterior mirror housing, vastly increase the line of sight along the side of the coach, keeping you safe on the road.







FLOOR PLANS



33.2

33.2 FEATURES

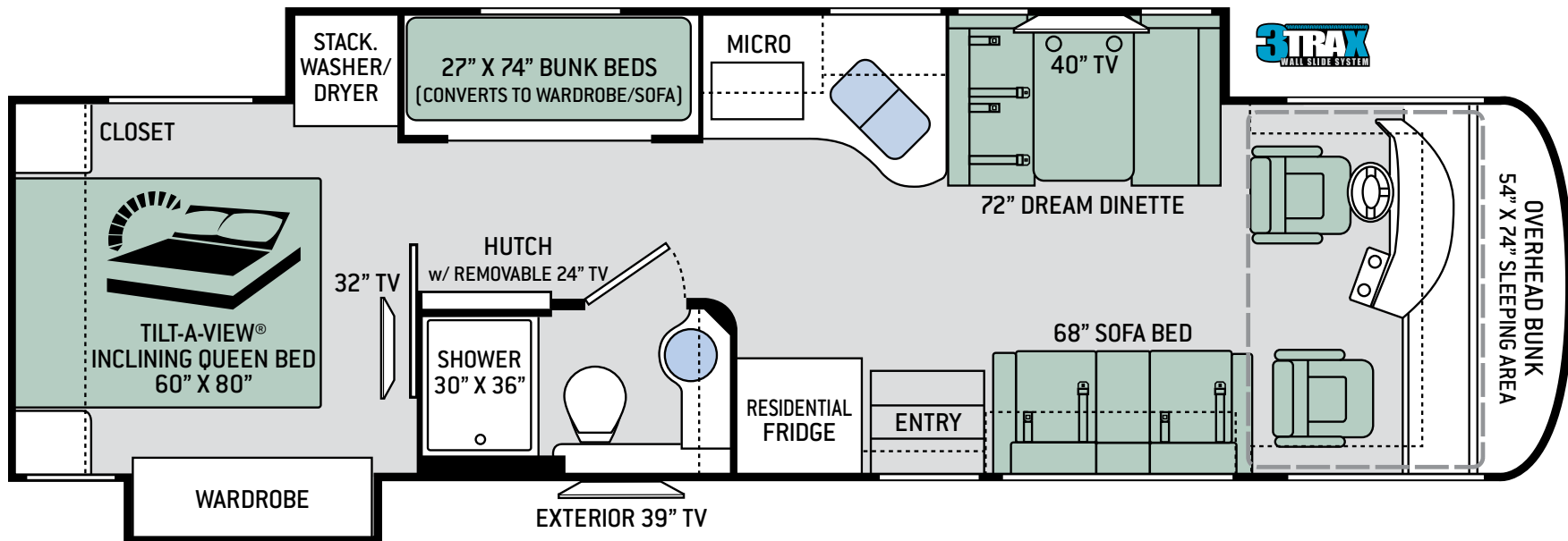
- » Under 35 ft. diesel pusher - state and national park friendly
- » Mid entry easy step-up with mud-room storage
- » Passenger dash workstation with 110v and USB connections
- » Power drop-down hide-away overhead bunk with Cotton Cloud™ Mattress
- » Full house multiplex wiring system, app-enabled and surge guard electrical protection
- » Queen bed, dual wardrobes and large nightstands in master
- » Stylish and comfortable euro-recliner with footrest
- » Dual pull-out pantries in kitchen
- » Stackable washer and dryer

SPECIFICATIONS

33.2

CHASSIS	Freightliner XC-R
GROSS VEHICLE (GVWR)	26,000
GROSS COMBINED (GCWR)	30,000
WHEEL BASE	208"
EXTERIOR LENGTH (W/O LADDER)	34'-9"
EXTERIOR HEIGHT (W/AC)	12'-1"
EXTERIOR WIDTH (W/O MIRRORS)	101"
INTERIOR HEIGHT (LIVING AREA)	82"
AWNING SIZE	18'
FUEL (GAL)	90
LPG (LBS)	105
FRESH/WASTE/GRAY WATER (GAL)	95 / 40 / 40
WATER HEATER (GAL)	Tankless
FURNACE (BTUS)	35,000
EXTERIOR STORAGE CAPACITY (CU. FT.)	126
HITCH WEIGHT RATING (LBS)	10,000

FLOOR PLANS



33.5

33.5 FEATURES

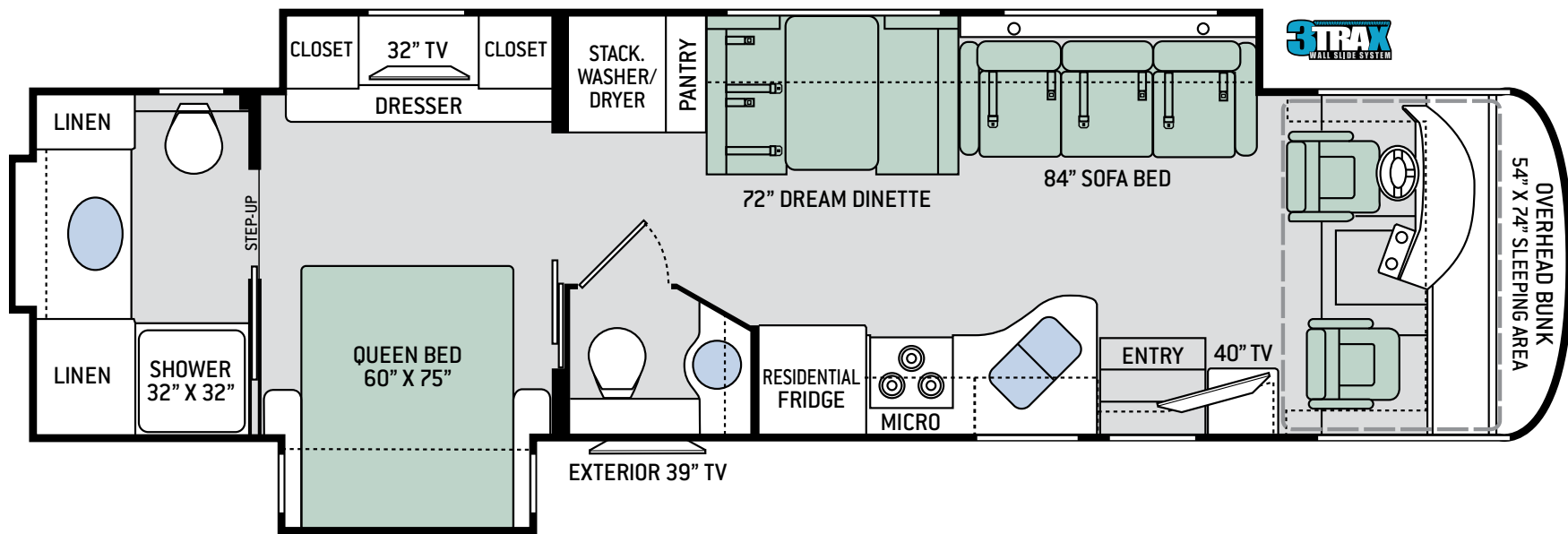
- » Under 35 ft. diesel pusher - state and national park friendly
- » Mid entry easy step-up with mud-room storage
- » Passenger dash workstation with 110v and USB connections
- » Power drop-down hide-away overhead bunk with Cotton Cloud™ Mattress
- » Full house multiplex wiring system, app-enabled and surge guard electrical protection
- » Denver Mattress Queen size bed with Tilt-A-View® inclining bed mechanism
- » 27" x 74" bunks and sleeping capacity up to 10
- » Bunk beds convert into sofa
- » Dual TVs with built-in DVD players for each bunk

SPECIFICATIONS

33.5

CHASSIS	Freightliner XC-R
GROSS VEHICLE (GVWR)	26,000
GROSS COMBINED (GCWR)	30,000
WHEEL BASE	208"
EXTERIOR LENGTH (W/O LADDER)	34'-9"
EXTERIOR HEIGHT (W/AC)	12'-1"
EXTERIOR WIDTH (W/O MIRRORS)	101"
INTERIOR HEIGHT (LIVING AREA)	82"
AWNING SIZE	18'
FUEL (GAL)	90
LPG (LBS)	105
FRESH/WASTE/GRAY WATER (GAL)	95 / 40 / 40
WATER HEATER (GAL)	Tankless
FURNACE (BTUS)	35,000
EXTERIOR STORAGE CAPACITY (CU. FT.)	126
HITCH WEIGHT RATING (LBS)	10,000

FLOOR PLANS



36.1

36.1 FEATURES

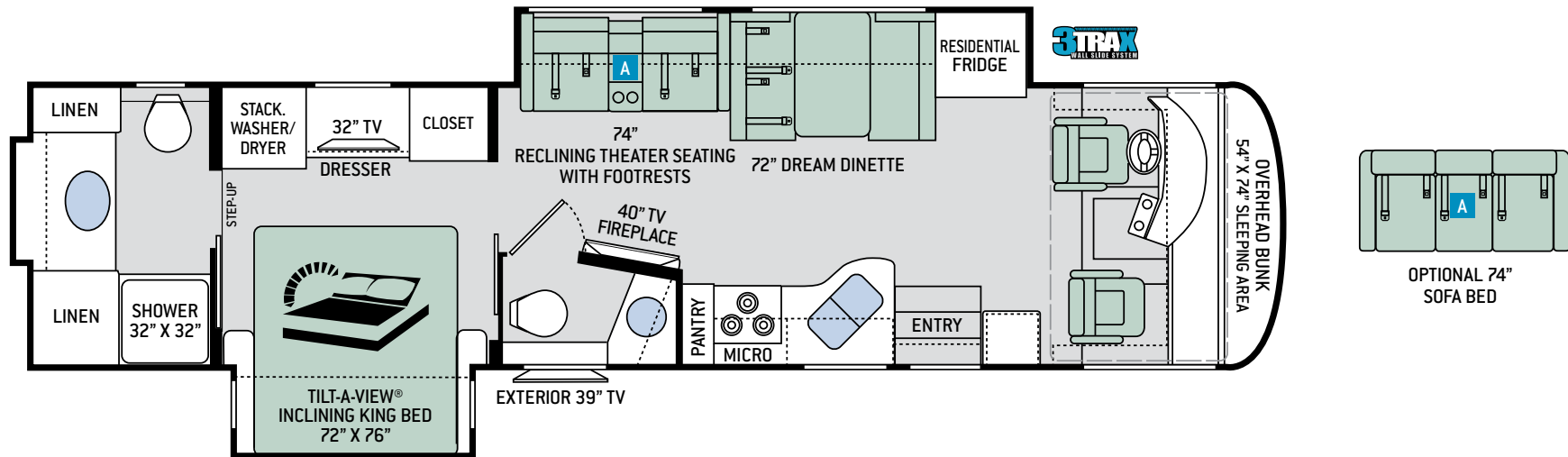
- » 37' diesel pusher with full rear master bath and half bath
- » Easy step-up mid entry with mud-room
- » Dual pull-out pantries in kitchen and overhead storage
- » Power drop-down hide-away overhead bunk with Cotton Cloud™ Mattress
- » Full house multiplex wiring system, app-enabled and surge guard electrical protection
- » Stackable washer and dryer
- » Rear black tank flush system
- » Swivel captain & co-pilot seats are integrated into the living space for additional seating and entertaining
- » Queen bed with large storage cube underneath
- » Most living space 365 sq. ft.

SPECIFICATIONS

36.1

CHASSIS	Freightliner XC-R
GROSS VEHICLE (GVWR)	30,500
GROSS COMBINED (GCWR)	33,000
WHEEL BASE	242"
EXTERIOR LENGTH (W/O LADDER)	37'-7"
EXTERIOR HEIGHT (W/AC)	12'-1"
EXTERIOR WIDTH (W/O MIRRORS)	101"
INTERIOR HEIGHT (LIVING AREA)	82"
AWNING SIZE	18'
FUEL (GAL)	90
LPG (LBS)	105
FRESH/WASTE/GRAY WATER (GAL)	95 / 40F - 17R / 40
WATER HEATER (GAL)	Tankless
FURNACE (BTUS)	35,000
EXTERIOR STORAGE CAPACITY (CU. FT.)	170
HITCH WEIGHT RATING (LBS)	10,000

FLOOR PLANS



36.3

36.3 FEATURES

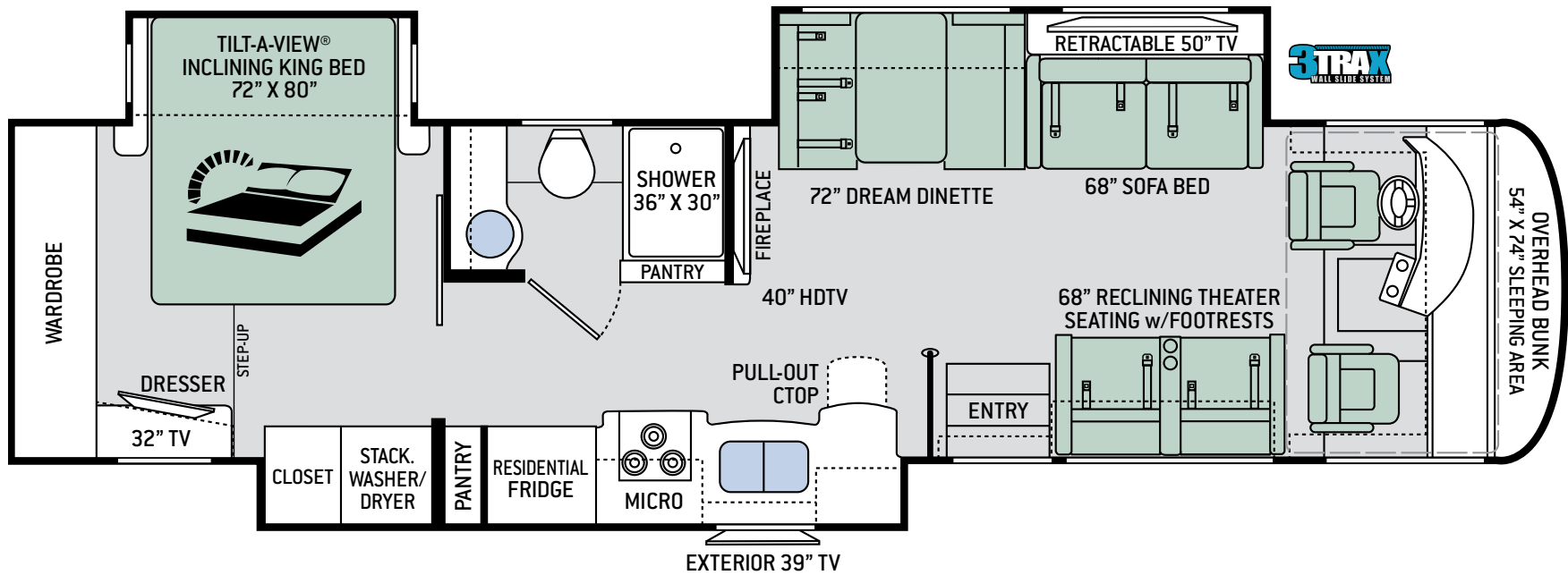
- » 37' diesel pusher with full rear master bath and half bath
- » Easy step-up mid entry with mud-room
- » Dual pull-out pantries in kitchen and overhead storage
- » Drop-down front overhead bunk with 500-lbs capacity
- » Stackable washer and dryer
- » Full house multiplex wiring system, app-enabled and surge guard electrical protection
- » Rear black tank flush system
- » Electric fireplace with remote
- » Theater seating with footrests
- » King size bed with Tilt-A-View® inclining bed mechanism

SPECIFICATIONS

36.3

CHASSIS	Freightliner XC-R
GROSS VEHICLE (GVWR)	30,500
GROSS COMBINED (GCWR)	33,000
WHEEL BASE	242"
EXTERIOR LENGTH (W/O LADDER)	37'-7"
EXTERIOR HEIGHT (W/AC)	12'-1"
EXTERIOR WIDTH (W/O MIRRORS)	101"
INTERIOR HEIGHT (LIVING AREA)	82"
AWNING SIZE	18'
FUEL (GAL)	90
LPG (LBS)	105
FRESH/WASTE/GRAY WATER (GAL)	95 / 40F - 17R / 40
WATER HEATER (GAL)	Tankless
FURNACE (BTUS)	35,000
EXTERIOR STORAGE CAPACITY (CU. FT.)	170
HITCH WEIGHT RATING (LBS)	10,000

FLOOR PLANS



37.4

37.4 FEATURES

- » Dual awnings passenger-side (Almost 30' of shade)
- » Opposing seating floorplan including a 68" sofa bed across from theater seats with footrests
- » Retractable 50" LED HDTV with large windows behind
- » Electric fireplace with remote control
- » Large 7' kitchen with countertop extension and large kitchen window on the patio side
- » Dual pull-out pantries in kitchen and overhead storage
- » King size bed with Tilt-A-View® inclining bed mechanism
- » Full 8' rear wardrobe in master bedroom

SPECIFICATIONS

37.4

CHASSIS	Freightliner XC-R
GROSS VEHICLE (GVWR)	31,020
GROSS COMBINED (GCWR)	33,000
WHEEL BASE	256"
EXTERIOR LENGTH (W/O LADDER)	38'-9"
EXTERIOR HEIGHT (W/AC)	12'-1"
EXTERIOR WIDTH (W/O MIRRORS)	101"
INTERIOR HEIGHT (LIVING AREA)	82"
AWNING SIZE	12'-4" / 15'
FUEL (GAL)	90
LPG (LBS)	105
FRESH/WASTE/GRAY WATER (GAL)	95 / 40 / 40
WATER HEATER (GAL)	Tankless
FURNACE (BTUS)	35,000
EXTERIOR STORAGE CAPACITY (CU. FT.)	170
HITCH WEIGHT RATING (LBS)	10,000

L A Y T H E G R O U N D W O R K F O R S A F E T R A V E L S



A home needs a strong
foundation and that is
especially true for the home
that rolls down the road.

The Atlas™ Foundation
under the Palazzo provides
an excellent base to
construct your
new motorhome.

The Atlas Foundation™ is the premier building platform and substructure in the industry. Thor Motor Coach has partnered with industry leaders, Freightliner® Custom Chassis and MORryde® International, to bring you this innovative building design.

Innovation doesn't just happen, it takes a dedicated team of the very best designers and engineers working together to tackle the challenges in the road ahead. From the very start our main focus is you, and you will see that from the moment you step into the motorhome.

The Atlas Foundation™ is a fully integrated basement foundation design. This means that trusses, cross members and ladder assemblies are pre-formed and laser-cut from high-strength, 50 grade HSLA steel, which provides greater resistance to corrosion than carbon steel.

The structure is assembled and welded on a flat, laser-leveled table, then hoisted onto the OEM chassis and welded into place. This system includes a built-in, unit floor leveling system, which maintains the true squareness of the motorhome body and helps prevent crowning.

Fiberglass lined, pass-through storage bays span the width of the unit with steel support under each of the compartments. The steel sub-frame can support more than 1,000 pounds per compartment. Designed to facilitate greater luminosity, the interior mold and mildew resistant fiberglass lining is white, making it easier to see within the compartment in low-light situations.

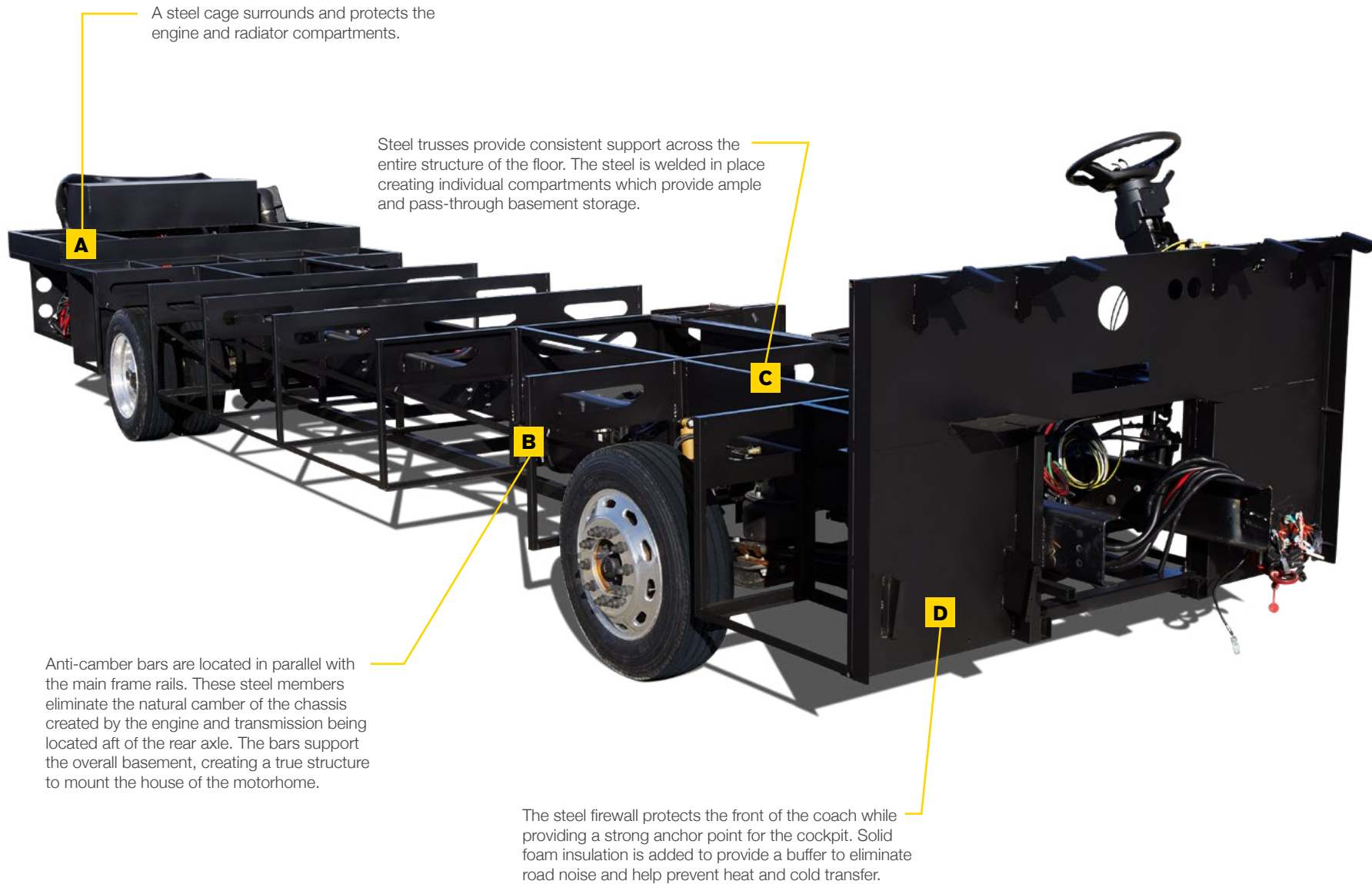
Built strong and insulated to help reduce heat transfer, the firewall and rear engine cage are fully encased in steel, which eliminates engine and road noise.

You're the one who will rely on our innovation for years to come. You're the one who will feel the strength of the Atlas Foundation™ as you drive the open road. You're the one who will benefit from our hard work and commitment to excellence.

We didn't just design the Atlas Foundation™, we crafted it to fit you.



Driven By You



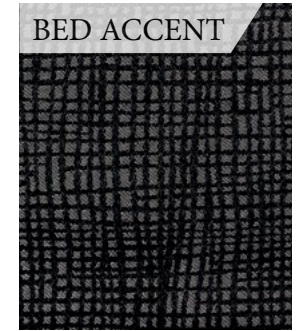
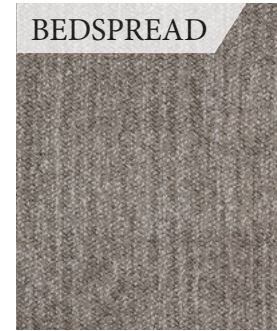
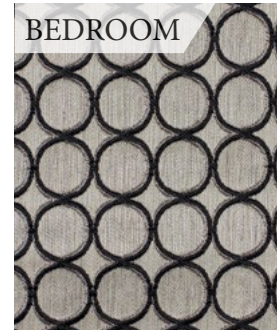
A steel cage surrounds and protects the engine and radiator compartments.

Steel trusses provide consistent support across the entire structure of the floor. The steel is welded in place creating individual compartments which provide ample and pass-through basement storage.

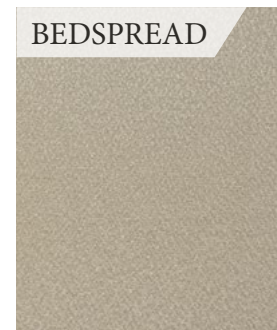
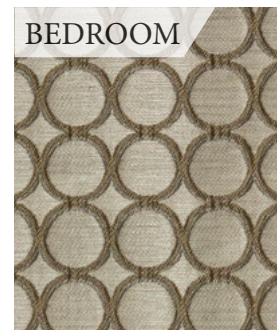
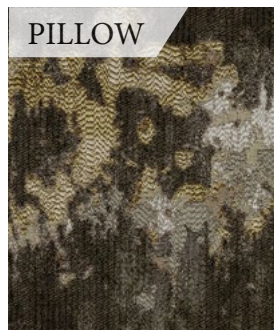
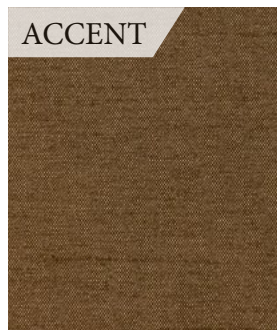
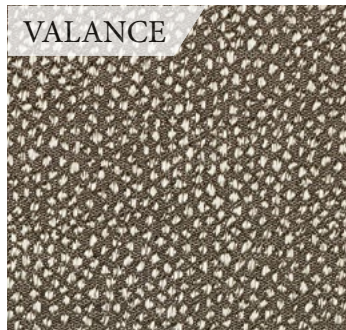
Anti-camber bars are located in parallel with the main frame rails. These steel members eliminate the natural camber of the chassis created by the engine and transmission being located aft of the rear axle. The bars support the overall basement, creating a true structure to mount the house of the motorhome.

The steel firewall protects the front of the coach while providing a strong anchor point for the cockpit. Solid foam insulation is added to provide a buffer to eliminate road noise and help prevent heat and cold transfer.

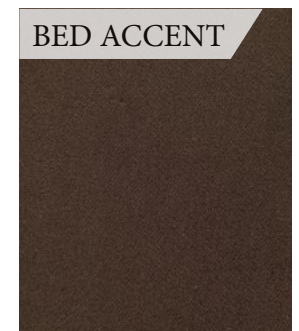
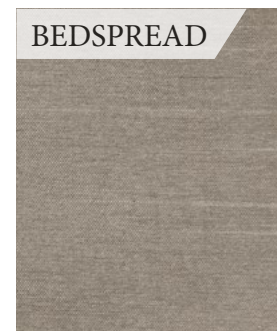
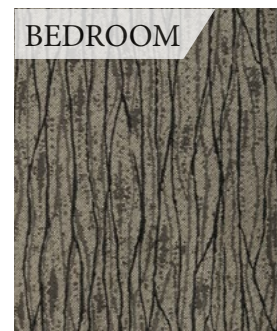
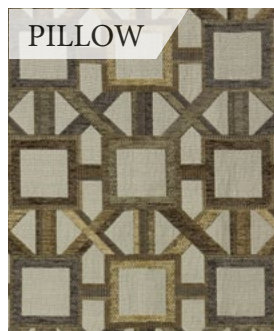
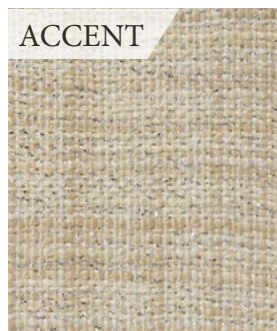
INTERIOR OPTIONS



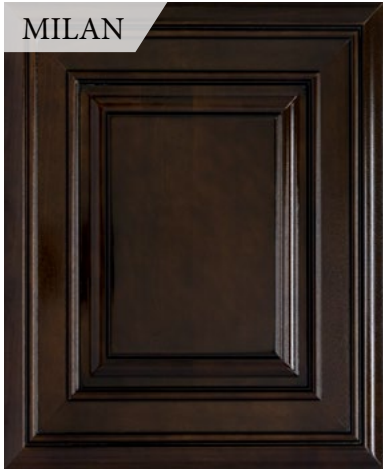
ARCADIA



QUARRY



SEASIDE



ARCADIA



QUARRY & SEASIDE







SPECIAL FEATURES



100-watt Solar Charging System with Power Controller



Freightliner® XC-S Straight Rail Chassis with Atlas™ Foundation



High-Gloss Glazed Solid Hard Wood Cabinet Doors and Nickel Finish Hardware



Power Drop-Down Hide-Away Overhead Bunk with Cotton Cloud™ Mattress and Bunk Ladder



Winegard® Connect 4G/Wifi-System



Dual Pane Frameless Windows



Stackable Washer/Dryer on Select Floor Plans



Exterior TV on Manual Swivel with Sound Bar



Multiplex Wiring Control System with 7" Touchscreen



10" Touchscreen Dash Radio with Bluetooth®, GPS Navigation and Back-up Monitor



FEATURED HIGHLIGHTS

CONSTRUCTION & EXTERIOR

- » Freightliner® XC-S Straight Rail Chassis with Atlas™ Foundation
- » Cummins® ISB 6.7L Diesel Engine with 300HP, 660 lb.-ft. Torque (33.2 & 33.5)
- » Cummins® ISB 6.7L Diesel Engine with 340HP, 700 lb.-ft. Torque (36.1, 36.3 & 37.4)
- » 6-Speed Allison Automatic Transmission
- » I-Beam Front Axle with 55° Wheel Cut
- » Air-Ride™ Suspension
- » Full Air Front & Rear Drum Anti-Lock Brakes
- » Exhaust Brake
- » Sachs® Shock Absorbers
- » 90-gallon Fuel Tank with Dual Fills
- » One-Piece Fiberglass Front & Rear Caps
- » One-Piece Windshield
- » One-Piece TPO Roof
- » Full-Body Paint Package with Gel-Coat Sidewalls with Invisible Front Paint Protection
- » Automatic Leveling Jacks with Touchpad Controls
- » Basement Pass-Through Storage Compartment

- » Easy Slide Storage Tray (33.2, 33.5, 36.1 & 36.3)
- » Side-Hinged, Flush Mount Radius Compartment Doors
- » Lighted Storage Compartments
- » Power Patio Lateral Arm Awning with Integrated LED Lighting
- » Slideout Room Topper Awnings
- » 3TRAX® Wall Slide System
- » Frameless Dual Pane Windows
- » Roof Ladder
- » Electric Entry Step
- » Entry Door with Deadbolt Lock
- » 10,000-lb. Trailer Hitch with 7-pin Round Connector

AUTOMOTIVE & COCKPIT

- » Touchscreen Dash Radio with Bluetooth®, GPS Navigation & Back-Up Monitor
- » Heated/Remote Exterior Mirrors with Integrated Side View Cameras
- » Leatherette Reclining/Swivel Captain's Chairs
- » Power Adjustable Driver's Seat
- » Emergency Engine Start Switch
- » Tilt/Telescoping Steering Column

- » Cruise Control
- » Dash Fans
- » Fog Lights
- » Power Roller Shade on Windshield
- » Manual Roller Shades on Side Windows
- » 255/70R 22.5" Radial Tires with Aluminum Wheels
- » Valve Stem Extenders on Rear Wheels
- » Dash Workstation with 110-volt & 12-volt Outlets
- » Power Drop-Down Hide-Away Overhead Bunk with Cotton Cloud™ Mattress & Bunk Ladder

INTERIOR

- » Residential Vinyl Flooring
- » High-Gloss Glazed Cabinetry with Solid Wood Raised Panel Cabinet Doors & Nickel Finish Hardware
- » Solid Wood Veneer
- » LED Lighting
- » Soft Touch Vinyl Ceiling
- » Window Solar & Privacy Shades in Living Area
- » Leatherette Euro Recliner with Integrated Ottoman (33.2)
- » Leatherette Reclining Theater Seating with Footrests (36.3 & 37.4)



- » Leatherette Sofa Bed (33.2, 33.5, 36.1 & 37.4)
- » Dream Dinette® Booth with Pull-out Drawer
- » Electric Fireplace with Remote Control (36.3 & 37.4)

INTERIOR OPTION

- » Leatherette Sofa Bed (36.3)

KITCHEN

- » Stainless Steel Residential Refrigerator with Ice Maker
- » Electric Induction Cooktop
- » 30" Over-the-Range Convection Microwave Oven
- » Solid Surface Countertops
- » Large, Double Bowl Stainless Steel Sink & Single Handle Faucet w/Pull-Down Sprayer
- » 12-volt Attic Fan with Cover

BEDROOM & BATHROOM

- » Denver Mattress® King Size Bed with Tilt-A-View™ Inclining Mechanism (36.3 & 37.4)
- » Denver Mattress® Queen Size Bed (33.2 & 36.1)
- » Denver Mattress® Queen Size Bed with Tilt-A-View™ Inclining Mechanism (33.5)

- » Attractive Headboard, Bedspread & Throw Pillows
- » Bunk Beds – Converts to Sofa (33.5)
- » USB Charging Ports in Nightstands
- » Sconce Wall Lighting (33.2)
- » Porcelain Toilet
- » Oversized Shower with Glass Door
- » Power Vent in Bathroom

ENTERTAINMENT

- » 50" LED TV in Living Area (37.4)
- » 40" LED TV in Living Area
- » Blu-Ray Player & Sound Bar
- » 32" LED TV in Bedroom
- » 15.5" & 24" LED TVs in Bunk Bed Area (33.5)
- » Exterior 39" LED TV on Manual Swivel with Bluetooth® Sound Bar
- » Cable TV & HDMI Ready
- » Winegard® Connect 4G/WiFi System

ELECTRICAL & PLUMBING

- » Onan® RV QD 6000 Diesel Generator

- » 50-amp Shoreline Power Cord
- » 2000-watt Inverter/100-amp Converter
- » Multiplex Wiring Control System with 7" Screen & App Control
- » 100-watt Solar Charging System with Power Controller
- » Dual 13,500 BTU Ducted Low-Profile Roof Air Conditioners
- » Automatic Generator Start
- » Four (4) Auxiliary House Batteries
- » Battery Disconnect Switch
- » Tankless Water Heater
- » Water Heater Bypass System
- » 360° Siphon RV Holding Tank Vent Cap
- » Black Tank Flush System
- » Stackable Washer/Dryer
- » Outside Shower
- » Systems Control Center

For a complete listing of available features, visit thormotorcoach.com/palazzo.





Made to fit.

Colton RV
North Tonawanda, NY 14120
(716) 694-0188
(800) 628-4889
www.ColtonRV.com

Colton RV
Orchard Park, NY 14127
(716) 957-3250
(800) 628-4889
www.Coltonrv.com

IMPORTANT—PLEASE READ: This brochure reflects product design, fabrication, material, components and specifications at the date of printing, which date is disclosed below. Please visit us online at ThorMotorCoach.com or consult with your selling dealership for the latest in standards, options, specification and technical information. Photographs in the brochure may depict optional equipment or may only be available in certain floor plans. Components, appliances and the chassis may have been manufactured in a calendar year before the vehicle's designated model year. All capacities are approximate. The actual length of the vehicle may differ from that indicated in the brochure due to variances in the manufacturing processes and/or installed components. All dry weights are based on standard model features and do not include optional features or equipment. Component part and appliance manufacturers issue limited warranties covering portions of the vehicle not covered under the limited warranty we issue. Copyright Thor Motor Coach, Inc. © OH 10/01/18



thormotorcoach.com/palazzo
P.O. Box 1486, Elkhart, IN 46515 Sales Department: 800.860.5658 Customer Service: 877.855.2867