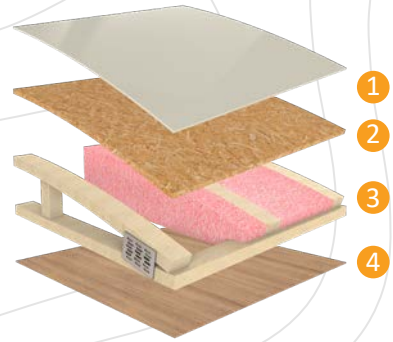




DUTCHMEN® CONSTRUCTION ADVANTAGE

We put a great amount of thought into every RV we design and build. From strong frames, to sturdy walls and insulation, we build every RV to take you on many adventures to come.

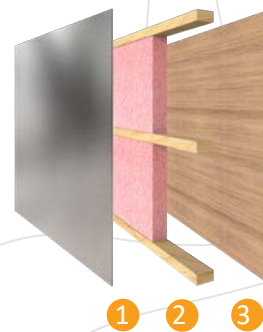


Durable Roof Structure

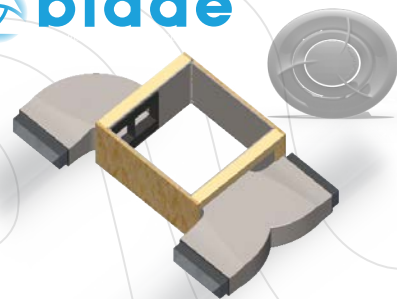
- 1 TPO Roof
- 2 3/8" Decking
- 3 Fiberglass Insulation
- 4 Lauan Interior Panel

Insulated Structure

- 1 Metal Exterior Panel
- 2 Wood Frame with R7 Thermal Insulation
- 3 Lauan Interior Panel



blade



Blade Air Flow System

This design reduces air turbulence and noise accelerating airflow with duct elbows and wyes that feature enlarged inlets and narrow as they push cooled air from the AC through the length of the ducting.

(On Ducted AC Models Only)

MORE STANDARD FEATURES MORE VALUE

Everything we put into our innovative floor plans are designed to maximize storage and comfort. We don't stop there, to ensure peace of mind after the purchase we have the industry's best RV warranty, 100% pre-delivery inspection, and the leader in parts and service. While other manufacturers offer features as options, we prefer to make those same features standard.

We've built a reputation for bringing RV owners more standard features for less money for over 25 years, and it's a reputation we plan to keep.



100% PRE-DELIVERY INSPECTION

At Dutchmen, quality is standard. Every single Dutchmen RV that comes off the line receives its own pre-delivery inspection. Every unit undergoes a thorough 253-point check to ensure accurate measurements, fully-functional electronics and components.



THE INDUSTRY'S BEST RV WARRANTY

With this industry-best warranty, we take the guessing game out of what is and isn't covered. So, that means you don't have to wrangle over the details, because we deliver value by clearly outlining the major components we back during the first three years.



THE LEADER IN PARTS AND SERVICE

Replacement parts. Routine checkups. Expert advice. You name it and we've got it covered. When only the best RV services will suffice, our industry-leading parts and service department is ready to help you get back on the road - and stay there longer than ever before.



△ COLORADO

Your Dealer

Colton RV
3122 Niagara Falls Blvd
North Tonawanda, NY 14120
(716) 694-0188
www.ColtonRV.com

Colton RV
3443 Southwestern Blvd.
Orchard Park, NY 14127
(716) 957-3250
www.Coltonrv.com

PO BOX 2000 | 2164 CARAGANA COURT | GOSHEN, IN 46527 | SALES 574.537.0600

www.dutchmen.com

Visit us online to see all the Dutchmen brands, innovative models and spacious floor plans.



Length is defined as the distance from the centerline of hitch pin/coupler to rear bumper of trailer. **Our weights represent how most units are built, inclusive of many commonly-ordered options. ***Fresh water capacity includes water heater capacity.

DISCLAIMER: Product information is as accurate as possible as of the date of brochure publication. All features, floor plans and specifications in this brochure are subject to change without notice. Please consult Dutchmen's website at www.Dutchmen.com for current product information and specifications. Tow Vehicle Disclaimer. CAUTION: Owners of Dutchmen recreational vehicles are solely responsible for the selection and proper use of tow vehicles. All customers should consult with a motor vehicle manufacturer or their dealer concerning the purchase and use of suitable tow vehicles for Dutchmen products. Dutchmen disclaims any liability or damages suffered as a result of the selection, operation, use or misuse of a tow vehicle. DUTCHMEN'S LIMITED WARRANTY DOES NOT COVER DAMAGE TO THE RECREATIONAL VEHICLE OR THE TOW VEHICLE AS A RESULT OF THE SELECTION, OPERATION, USE OR MISUSE OF THE TOW VEHICLE. REFERENCE DUTCHMEN MANUFACTURING OWNERS MANUAL FOR LIMITED WARRANTY DETAILS. © 2021 Dutchmen 12-01-2021-Colorado-Printed in U.S.A MY2022

Travel Trailers
Your next base camp.



Dutchmen

COLORADO

You're next base camp.

Whether a weekend getaway or an extended season, the Colorado will renew your spirit. With more standard features and a focus on quality, value, and design, find your soul of the RV.

- **Colorado Power Package** - Every Colorado travel trailer comes standard with front and rear Power Stabilizers, Power Tongue Jack, and Power Awning with LED light to make setting up and breaking down your campsite a breeze.
- **Extra Large Pass Through Storage** - Carry more camping gear and personal belongings with you.
- **3 Year Structural Warranty** - Peace of mind knowing we have you covered along the way.



COLORADO 19BHC
Length: 23' 5" Weight: 3,885 lbs. Sleeps: 6-8
Hitch: 516 lbs. Height: 9' 11"



COLORADO 21RDC
Length: 25' 5" Weight: 4,270 lbs. Sleeps: 4-6
Hitch: 528 lbs. Height: 11' 3"



COLORADO 24BHC
Length: 28' 8" Weight: 4,588 lbs. Sleeps: 6-8
Hitch: 492 lbs. Height: 10' 6"



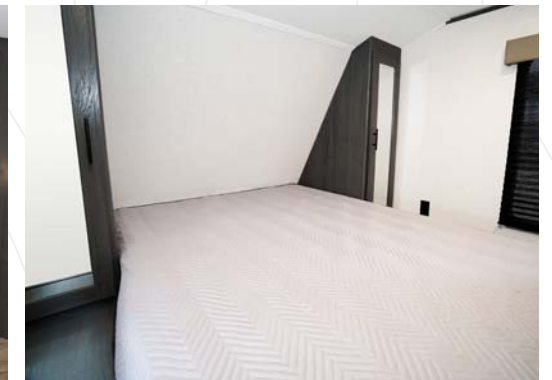
COLORADO 26BHC
Length: 30' 10" Weight: 5,911 lbs. Sleeps: 7-9
Hitch: 813 lbs. Height: 11' 1"



COLORADO 29BHC
Length: 33' 3" Weight: 6,481 lbs. Sleeps: 7-9
Hitch: 821 lbs. Height: 11' 3"



COLORADO 29DBC
Length: 33' 3" Weight: 6,480 lbs. Sleeps: 4-6
Hitch: 766 lbs. Height: 11' 3"



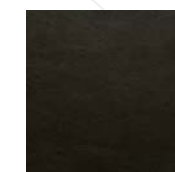
INTERIOR FEATURES:

- 3 Burner Range w/ Glass Space Cover (Select Models)
- Galley Sink w/ High Rise Faucet
- LED Interior Lighting
- Upgraded Residential Flooring
- Gas/Electric Refrigerator w/ 12v Option
- AM/FM/MP3 Player
- Full Extension Drawer Guides Throughout
- Blackout Night Shades Throughout
- Over Sized Windows
- Queen Bed
- Central Control Panel
- Fireplace in Slide Out Models Only

EXTERIOR FEATURES:

- High Output Furnace
- 6 Gallon Gas Water Heater with DSI
- 13.5k Roof Mount A/C
- Back Up Camera Prep
- Solar Prep
- Spare Tire
- 35 Amp Converter
- 30 Amp Power Cord
- Power Awning w/ LED Light
- Power Stabilizer Jacks
- Power Tongue Jack
- Friction Hinge Entry Door
- Magnetic Baggage Door Catches

INTERIOR DECORS



Titanium



Tungsten



Flooring



Cabinets



Countertop

Standard Features In Every Floor Plan

* Not all features available on Single Axle Models



Power Stabilizer Jacks



Power Tongue Jack



Dual 20lb Propane Tanks



Residential Queen Bed



Prepped for WIFI 4G LTE



Solar Prep



Backup Camera Prep

*All information & specifications are for units manufactured after 12/01/2021

To learn more visit our website dutchmen.com