

# Apex

By Coachmen

Ultra-Light Travel Trailers

Ultra-Light Travel Trailers



Reaching New Heights



**Coachmen**  
Leader to the Great Outdoors.

Apex  
By Coachmen

# Apex

## ULTRA-LIGHT TRAVEL TRAILERS

### APEX – LIGHT AND EASY... PERFECT FOR SMALLER TOW VEHICLES

Pack up, back up, hitch up and go. Apex Ultra-Light travel trailers are perfect for smaller tow vehicles and optimum fuel efficiency. Designed with fully laminated, aluminum framed walls, floor and roof, Apex travel trailers and hybrid expandables are amazingly lightweight and durable. AZDEL vacuum bonded composite panel construction is 50% lighter and provides better insulation than heavier wooden framed trailers.

All Apex floorplans have fresh interiors appointed with contemporary fabrics and flooring. Spacious and versatile, Apex 215RBK features a three-way convertible dinette. Choose the comfortable, U-shaped configuration (right), or a standard booth (left) or a sleeping area. Shown with Sandstone decor.

Apex is ultra lightweight and can be easily towed by today's half-ton trucks and SUVs. Most models weigh between 3,000 and 5,000 lbs. 215RBK shown with standard outside kitchen.





*Experience the Ultimate Getaway*



The 288BHS features large double 58" bunks with a sleeping capacity of up to ten, an exterior entry door to the bathroom, a large oversized dinette, and tons of storage. All for under 5,000 lbs. for easy towing. Shown in Java décor.



### APEX IS LIGHT ON THE ENVIRONMENT

APEX is TRA gold level rated. As a certified green RV, APEX utilizes effective production techniques in combination with healthy materials, plus efficient usage of energy and water to produce a high quality RV with less environmental impact.

The 268BHS features an 87" U-shaped dinette, tons of ample storage, a spacious kitchen, and a separated master bedroom for privacy. Shown in Waterloo decor.



Our exclusive queen bedroom suite offers versatility and functionality not found on traditional hybrid designs. Enjoy the comforts of this full walk-in design with a walk-around master bed, an entertainment room for the kids, or just simply relax in a screened-in patio room. The queen bedroom suite is featured on our 16RBX and 17REX models (pictured above).

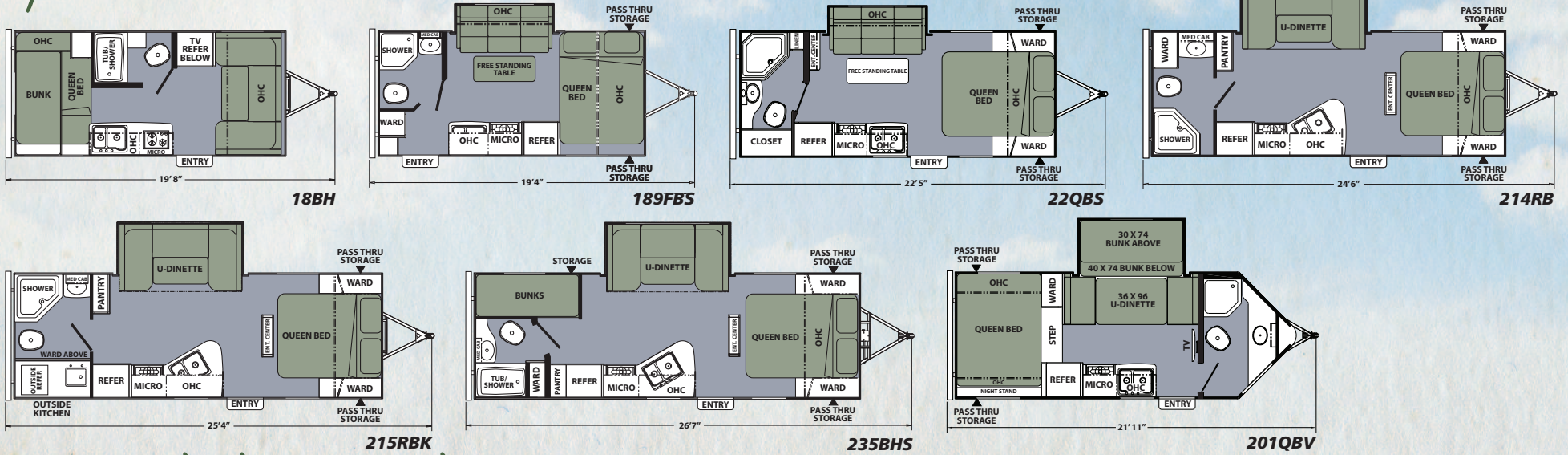


Relax outside and grill your favorite foods with our optional camp kitchen, available on 268BHS and 298BHS models.

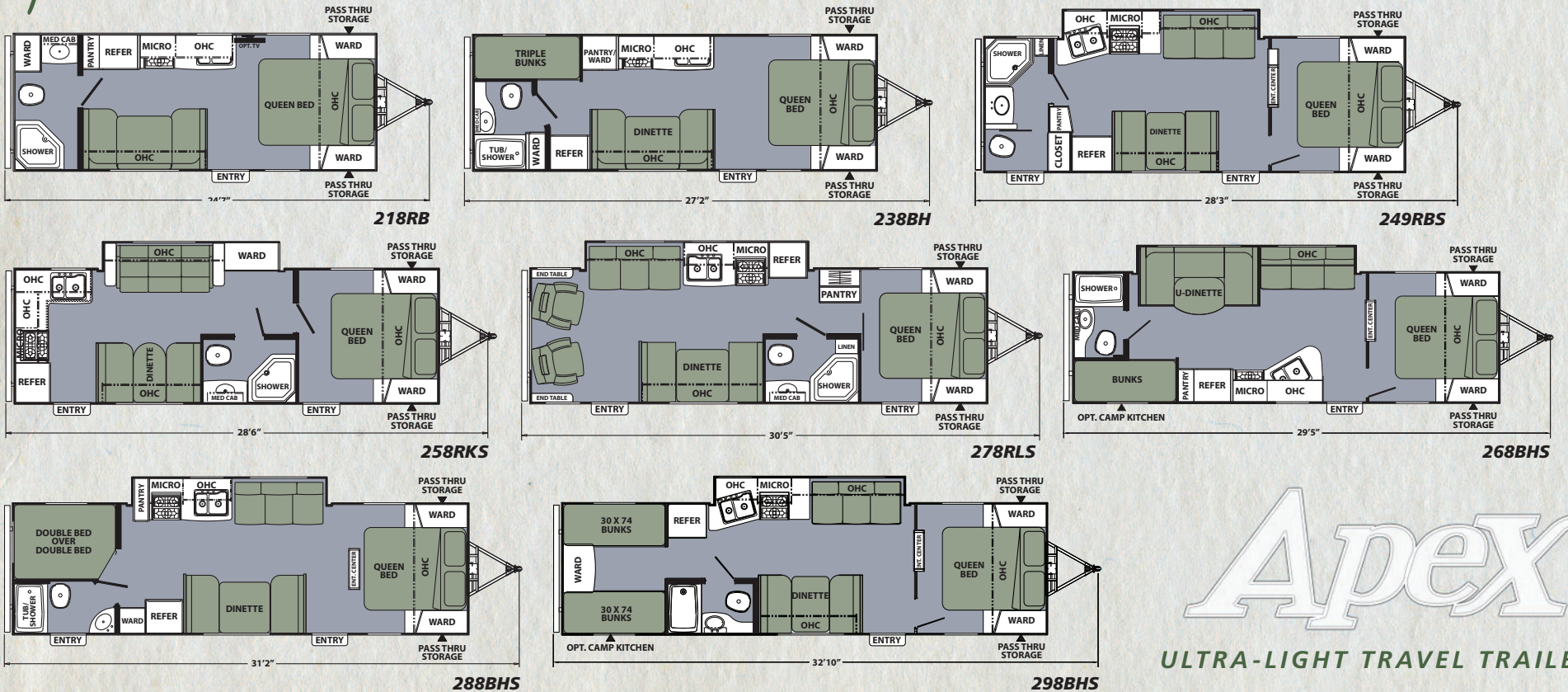
# Apex

ULTRA-LIGHT TRAVEL TRAILERS

# Apex Select Series Models



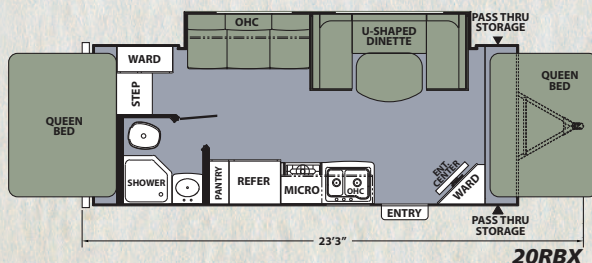
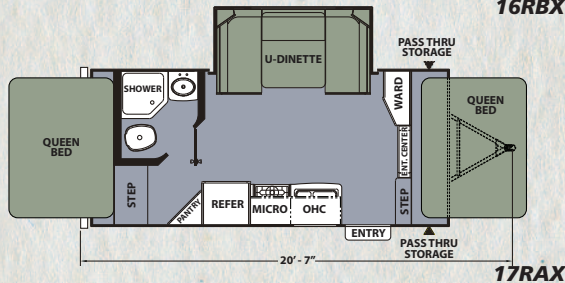
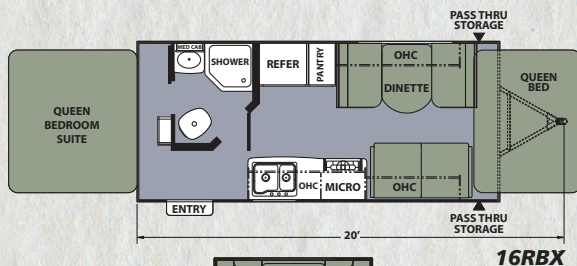
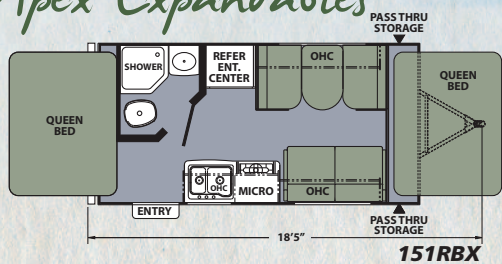
# Apex Standard Series Models



**Apex**  
ULTRA-LIGHT TRAVEL TRAILERS

	SELECT SERIES MODELS (7.5' WIDE)							STANDARD SERIES MODELS (8' WIDE)							EXPANDABLE MODELS				
	18BH	189FBS	22QBS	214RB	215RBK	235BHS	201QBV	218RB	238BH	249RBS	258RKS	278RLS	268BHS	288BHS	298BHS	151RBX	16RBX	17RAX	20RBX
Base Weight	2865	3293	3608	4111	4325	4277	3993	3678	4106	4730	4871	4777	4850	4842	5290	2980	3352	3830	4110
Hitch Weight	342	354	482	461	446	542	478	486	575	480	675	681	580	585	630	399	368	410	560
Carrying Capacity	975	1707	2392	1889	2175	2223	2007	2322	2394	2270	1629	2223	2150	2158	2190	831	2648	2170	1890
Gross Vehicle Weight	3840	5000	6000	6000	6500	6500	6000	6000	6500	7000	6500	7000	7000	7000	7500	3890	6000	6000	6000
Ext. Length	19'8"	19'4"	22'5"	24'6"	25'4"	26'7"	21'11"	24'7"	27'2"	28'3"	28'6"	30'5"	29'5"	31'2"	32'10"	18'5"	20'	20'7"	23'3"
Ext. Height w/AC	9'10"	9'10"	9'10"	9'10"	9'10"	9'10"	9'10"	9'10"	9'10"	9'10"	9'10"	9'10"	9'10"	9'10"	9'10"	9'10"	9'10"	9'10"	9'10"
Fresh Water	30 GAL	30 GAL	30 GAL	30 GAL	30 GAL	30 GAL	30 GAL	49 GAL	49 GAL	49 GAL	49 GAL	49 GAL	49 GAL	49 GAL	49 GAL	30 GAL	30 GAL	30 GAL	30 GAL
Gray Water	30 GAL	30 GAL	30 GAL	30 GAL	30 GAL	30 GAL	30 GAL	33 GAL	33 GAL	33 GAL	33 GAL	33 GAL	33 GAL	33 GAL	33 GAL	30 GAL	30 GAL	30 GAL	30 GAL
Waste Water	30 GAL	30 GAL	30 GAL	30 GAL	30 GAL	30 GAL	30 GAL	33 GAL	33 GAL	33 GAL	33 GAL	33 GAL	33 GAL	33 GAL	33 GAL	30 GAL	30 GAL	30 GAL	30 GAL

## Apex Expandables



### INTERIOR AND DÉCOR:

- ▲ Glazed Maple cabinetry
- ▲ Overhead bedroom cabinets
- ▲ Sealed edge countertops
- ▲ Congoleum Grand Canyon flooring
- ▲ Mini-blinds — throughout
- ▲ Pedestal dinette table
- ▲ Large oversized booth/U-shaped dinette
- ▲ Jackknife sofa
- ▲ Hardwood mortise & tenon cabinet door frames
- ▲ Stile & rail cabinet front construction
- ▲ LP leak alarm
- ▲ Fire extinguisher
- ▲ Smoke alarm
- ▲ Carbon monoxide detector

### ELECTRICAL/HEATING/AC:

- ▲ Furnace — forced air/ducts per floorplan
- ▲ 55 Amp power center
- ▲ 35 Amp power center — 151RBX, 18BH
- ▲ Outside receptacle GFI
- ▲ Patio light
- ▲ Cable TV hookup
- ▲ TV antenna
- ▲ AM/FM/CD player
- ▲ 2 Outside speakers
- ▲ Ducted A/C 238BH & above
- ▲ Detachable power cord

### GALLEY:

- ▲ Microwave
- ▲ 3 Burner cooktop w/oven (N/A 18BH)
- ▲ Double door refrigerator (N/A 18BH, 151RBX)
- ▲ Power/lighted range hood
- ▲ Black appliances
- ▲ Monitor Panel

- ▲ Oil rubbed bronze hardware
- ▲ Stonecast double bowl sink

### BATH AND WATER:

- ▲ Power bath vent
- ▲ 6 Gal. Gas/Elec. DSI hot water heater
- ▲ Water heater bypass valve
- ▲ Demand water pump
- ▲ Decorative bath hardware
- ▲ Medicine cabinet
- ▲ Below floor low point drains
- ▲ Foot flush toilet
- ▲ Designer tub surround
- ▲ Glass shower door - 34" neo-angle showers

### SLEEPING:

- ▲ Color coordinated comforter (Select models)
- ▲ Evergreen sleep mattress

### EXTERIOR/CONSTRUCTION:

- ▲ 13.5 Roof A/C
- ▲ Manual awning
- ▲ Spare tire kit w/spare tire
- ▲ 4 Stabilizer jacks
- ▲ Double 20# LP tanks
- ▲ Rubber roof
- ▲ Roof insulation — R-11
- ▲ Vacuum bonded laminated sidewalls — R-9
- ▲ Laminated aluminum framed floor — R-11
- ▲ Azdel composite exterior fiberglass
- ▲ Aluminum framed fully insulated sidewalls
- ▲ Radius laminated roof
- ▲ Gutter rail
- ▲ Dead bolt lock
- ▲ Tinted safety glass radius windows
- ▲ Radius entrance door
- ▲ Radius thumb latch baggage doors
- ▲ I-beam chassis construction

- ▲ Corrosion resistant powder coated frame
- ▲ Break away switch
- ▲ Schwintek slide room system
- ▲ Pass-thru storage
- ▲ Double entry step
- ▲ EZ lube axles
- ▲ Nitro filled radial tires
- ▲ Laminated aluminum framed floor

## Optional Features

### ▲ APEX ELITE PACKAGE:

- Hard valances with side curtains
- Night shades
- Décor-matched border
- Sink covers
- AM/FM/CD/DVD stereo
- 24" LED TV
- Access doors under dinette
- Deluxe graphics
- Aluminum wheels
- Ground effects (Metal skirting & ABS fender skirts – N/A 18BH, 151RBX)
- Slam latch doors at pass thru (Most models)
- Magnetic door catches
- Stone guard
- Hot/cold outside shower
- Bottle covers

### ADDITIONAL OPTIONS:

- ▲ Deluxe electric awning IPO standard (N/A 18BH, 151RBX)
- ▲ Heated enclosed tanks (N/A Select Series)
- ▲ 68" Residential sofa
- ▲ Frameless windows
- ▲ Camp Kitchen (268BHS & 298BHS only)



# Apex

ULTRA-LIGHT TRAVEL TRAILERS



**TRAVEL EASY™ ROADSIDE ASSISTANCE**  
 RVing is easier with Coachmen's Travel Easy™ Roadside Assistance provided FREE the first year of ownership to those who purchase a New Coachmen RV. Administered by Coach-Net, this service provides you with 24/7 operational, technical and emergency road service coverage. Also included is towing, fuel delivery, jump starts, lockout service, tire changes, mobile mechanic and unlimited technical assistance. Anywhere. Anytime. Travel Easy™ is the security of knowing that help is an easy phone call away.



**BIG BENEFITS FOR NEW OWNERS**  
**FREE One Year Membership – Coachmen Owners Association!**  
 Coachmen is proud to sponsor the largest manufacturer sponsored camping club in North America...Coachmen Owners' Association (COA). COA provides you a world of ways to enjoy your RV. This is FUN ON OVERDRIVE and provides: Free Trip Routing, Exciting Tours & Rallies, Free Campground Directory, Local/State Club Activities, Easy RVing Magazine Free, Theme Park Discounts, Fuel Discounts, Free onebigplanet® Memberships with discounts at 180,000 merchants and Much More! Every new Coachmen RV buyer is eligible for a 1 Year FREE membership in the Coachmen Owners' Association. It all adds up to an easy ownership experience!



**Forest River, Inc. encourages our customers to purchase their Forest River products from a local dealership whenever possible for the following reasons:**

- 1) Forest River, Inc. dealers are independently owned and operated businesses so priority service and scheduling is at their discretion and is often provided to customers that purchased their unit at that dealership.
- 2) Purchasing locally allows customers to establish meaningful relationships with a dealer, enhancing the RV experience through assistance with product questions, user tips or RV regulations for your state or country, and much more!
- 3) Canadian customers must meet requirements to bring an RV purchased out of the country to their home. These requirements may involve additional inspections and certifications, taxes and fees. Your local Canadian Dealer is a professional at meeting these requirements.
- 4) Scheduling timely warranty repairs and adjustments through a local dealership provides far greater flexibility and convenience to you, the customer!

It is the goal of Forest River, Inc. that all of our RV owners fully enjoy the RV experience and that customer satisfaction meets or exceeds their expectations!



Your Apex Dealer

Budget RV Outlet of Buffalo  
 4817 Lake Ave.  
 Blasdell, NY 14219  
[www.budgetrvoutlet.com](http://www.budgetrvoutlet.com)



**Learn More**  
 Scan this barcode using a QR Reader on your smart phone to learn more about Forest River.



A Berkshire Hathaway company.

423 N. Main Street ■ P.O. Box 30 ■ Middlebury, IN 46540  
 To learn more about Coachmen RV and our products and see how Coachmen is making the easy life easier, visit [www.coachmenrv.com](http://www.coachmenrv.com)

All information contained in this brochure is believed to be accurate at the time of publication. However, during the model year, it may be necessary to make revisions and Coachmen reserves the right to make all such changes without notice, including prices, colors, materials, equipment and specifications as well as the addition of new models and the discontinuance of models shown in this brochure. Therefore, please consult with your Coachmen dealer and confirm the existence of any materials, design or specifications that are material to your purchase decision. ©Copyright 2012. Coachmen RV, a Division of Forest River Inc. – All Rights Reserved. Printed 4/2013