

A NEW ERA IN ULTRA LITES

EASTERN EDITION

BULLET

Ultra Lite

by Keystone



DSI

Annual RVDA DEALER
SATISFACTION INDEX
AWARD WINNER
5 years IN A ROW

www.keystonerv.com/Bullet

 Keystone RV
Company



BULLET 287QBS SHOWN IN SADDLE DECOR



EASY TO TOW WITH THE NEW MORE FUEL EFFICIENT CROSSOVERS, CARS AND TRUCKS, THE BULLET ULTRA LITE TRAVEL TRAILER HERALDS IN A NEW GENERATION OF RVs.

Sleek and smooth on the outside and loaded with features and conveniences inside, the new Bullet Ultra Lite will set you free to explore the open road.

www.keystonerv.com/Bullet

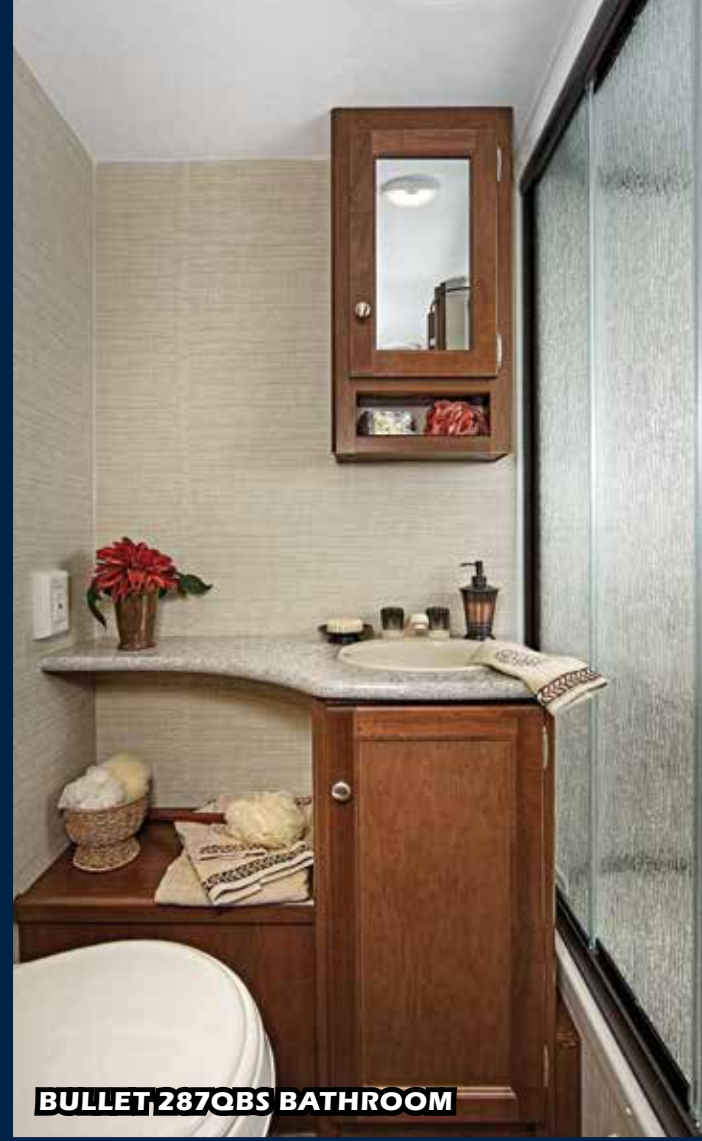
BULLET
Ultra Lite
by Keystone



BULLET 287QBS KITCHEN STORAGE



BULLET 287QBS BUNK ROOM WITH POCKET DOORS



BULLET 287QBS BATHROOM



EXTERIOR KITCHEN
(AVAILABLE ON 243BHS, 274BHS, 287QBS, 308BHS, 311BHS)



**THE INDUSTRY'S FIRST LUXURY
ULTRA LITE NOW HAS DEEPER
SLIDES AND MORE FEATURES!**

← 3 FEET WIDE! →

**REVERSIBLE
DINETTE CUSHIONS**



BULLET 248RKS SHOWN IN CHARCOAL DECOR

BULLET 248RKS KITCHEN SHOWN IN CHARCOAL DECOR

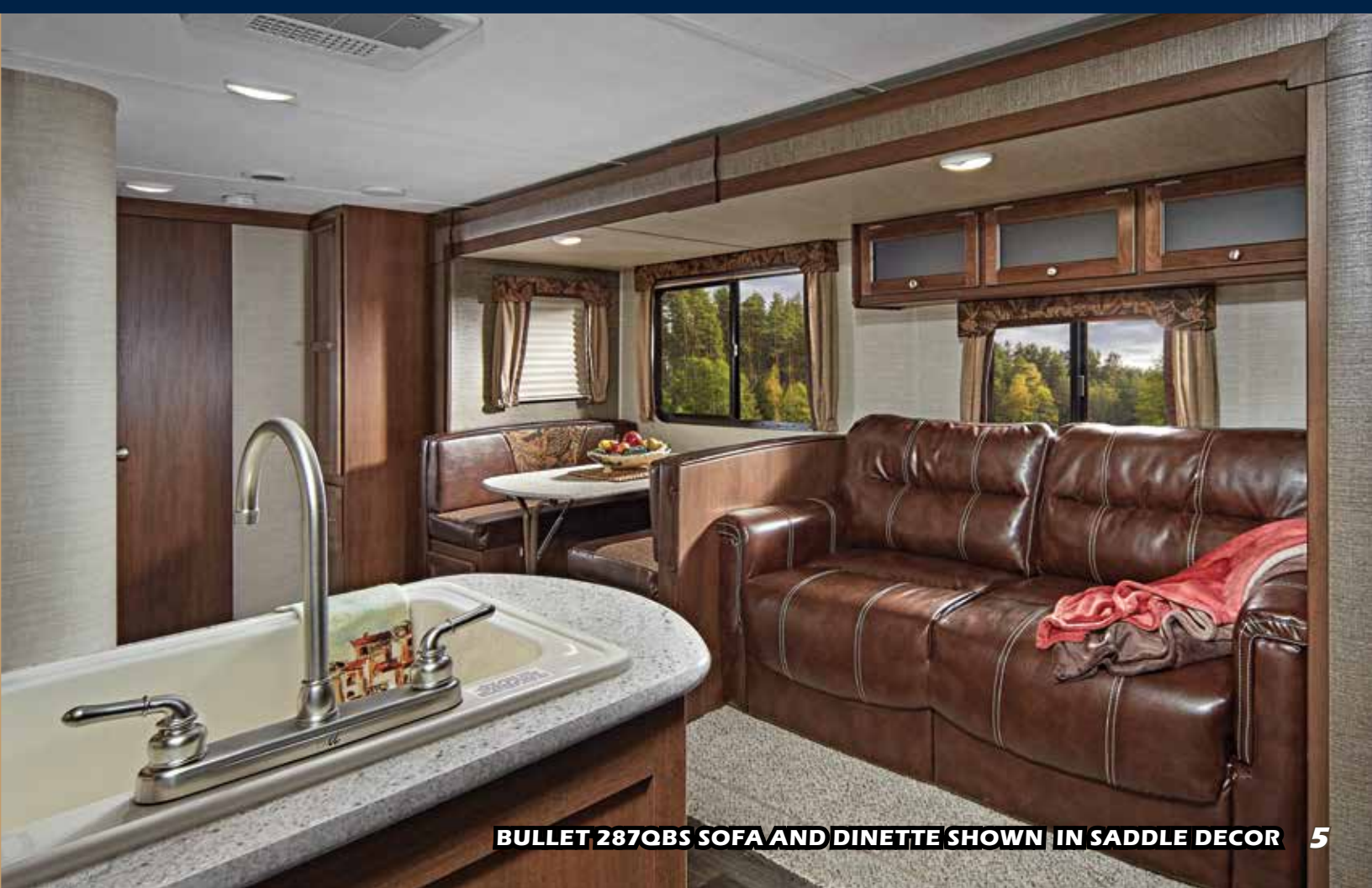


**CONVENIENCE,
COMFORT & STYLE**

**LAUNDRY CHUTE IN EVERY
BULLET FLOORPLAN**

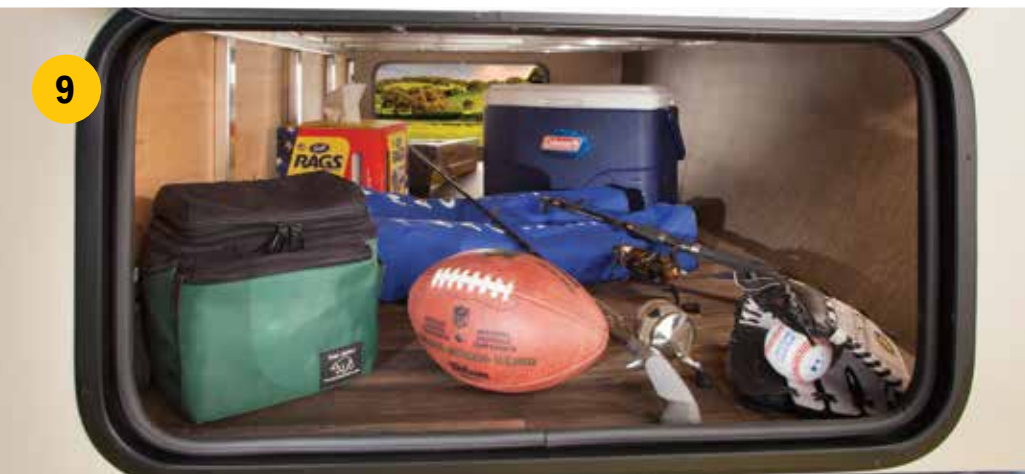


BULLET 287QBS BEDROOM WITH POCKET DOORS SHOWN IN SADDLE DECOR



BULLET 287QBS SOFA AND DINETTE SHOWN IN SADDLE DECOR 5

BULLET'S TOP FEATURES



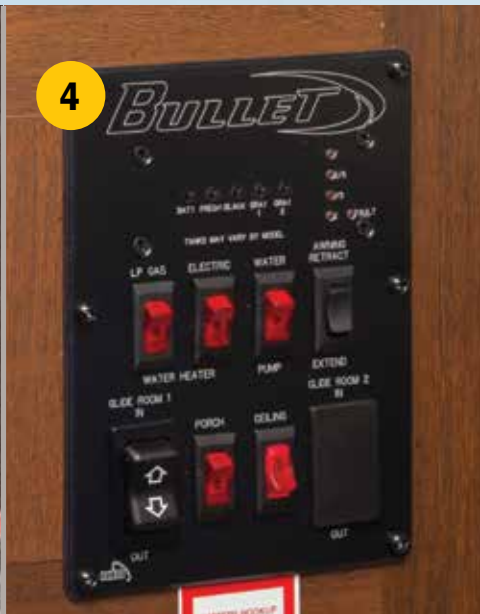
Bullet is the only ultra lite travel trailer to offer the following climate control features in all floor plans:

BULLET	COMPETITION
Enclosed underbelly	Exposed Tanks
2" pipes off of furnace with forced air into underbelly and radiant heat	Radiant heat Only
30,000 BTU Furnace	20,000 - 25,000 BTU Furnace
Ducted Heat and A/C	Non Ducted Heat and A/C

1. 6 cu. ft. Refrigerator
2. Exterior Kitchen (243BHS, 287QBS, 308BHS, 311BHS)
3. Laundry Chute in Master Bedroom
4. Labeled Systems Monitor Panel
5. Blackout Shades in Bunk Rooms
6. Storage Underneath the Bed in Master Bedroom



Includes more standard features that matter in light weight travel trailers.



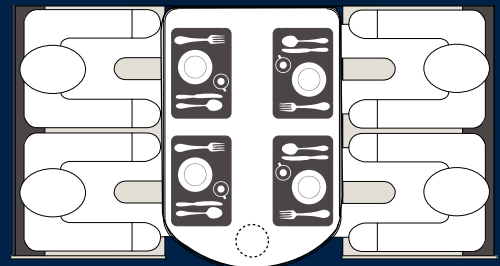
- 7. Gas Struts on Entry Doors
- 8. 9" Deep Single Basin Kitchen Sink (N/A 220RBI, 311BHS)
- 9. Largest Pass-Thru Storage in Class (40.3 cu. ft.)
- 10. CD/DVD/AM/FM/MP3/Bluetooth Stereo
- 11. Electric Adjustable Awning with LED Lighting
- 12. Hot/Cold Exterior Shower

COMPARE BULLET'S DINETTE TO THE COMPETITION



LARGE BOOTH DINETTE W/REVERSIBLE CUSHIONS

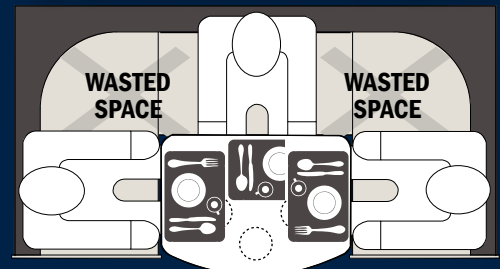
BULLET



COMFORTABLY SEATS 4 ADULTS

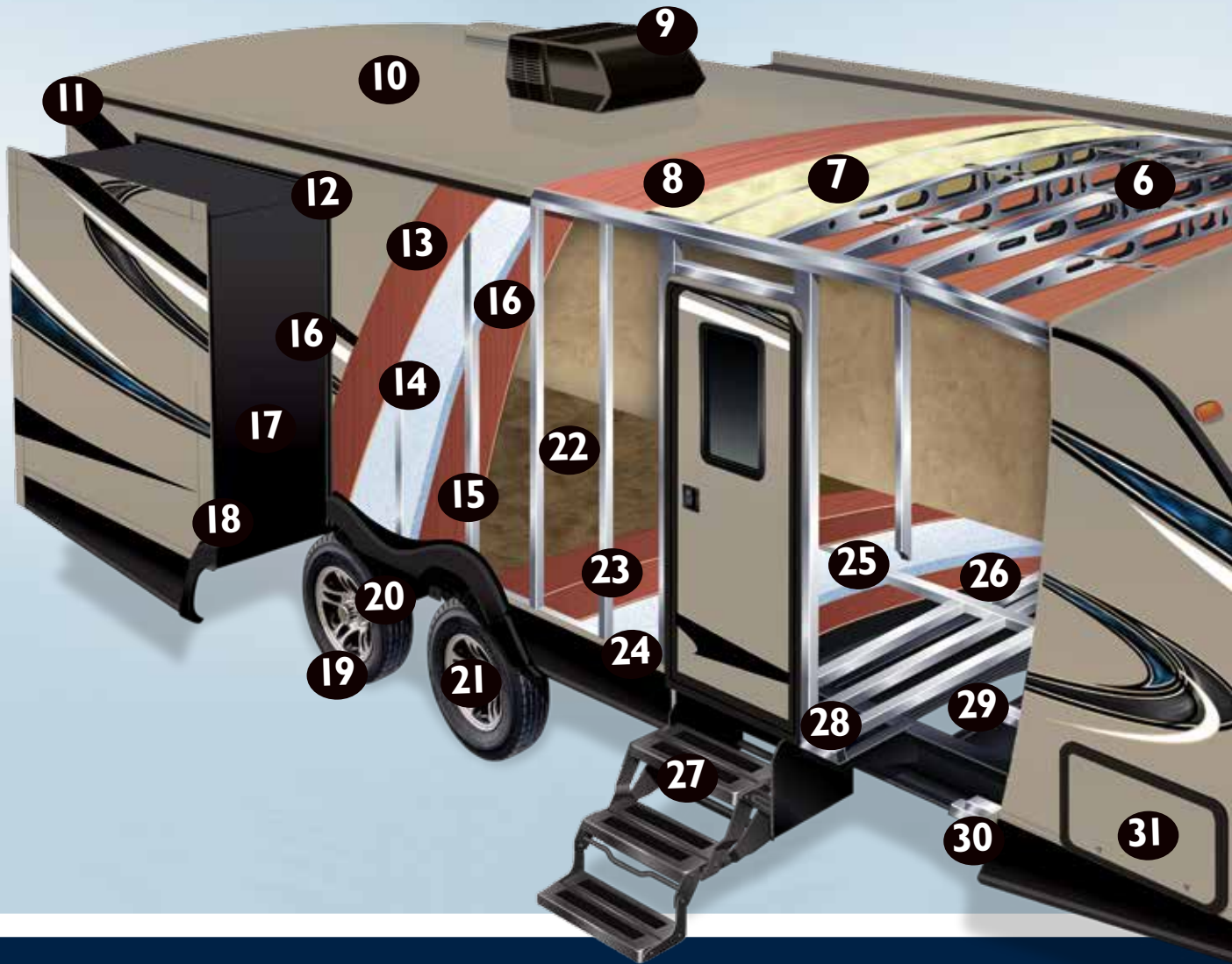
- PLENTY OF ROOM FOR 4 PLACEMATS
- ONLY NEEDS ONE TABLE SUPPORT
- CONVERTS TO 80" BED

COMPETITION



DON'T BE FOOLED! ONLY SEATS 3 ADULTS

- ONLY ENOUGH ROOM FOR 2.5 PLACEMATS
- 3 PEDESTAL SUPPORTS REDUCE LEG ROOM
- ALSO CONVERTS TO 80" BED



BEST TOWING TRAVEL TRAILER IN THE INDUSTRY

Increased MPG and Easier to Tow



REAR DEPARTURE ANGLE

Increases efficiency of wind flow underneath and behind the trailer



ENCLOSED UNDERBELLY

Eliminates turbulence caused by exposed frame members, holding tanks, plumbing etc.



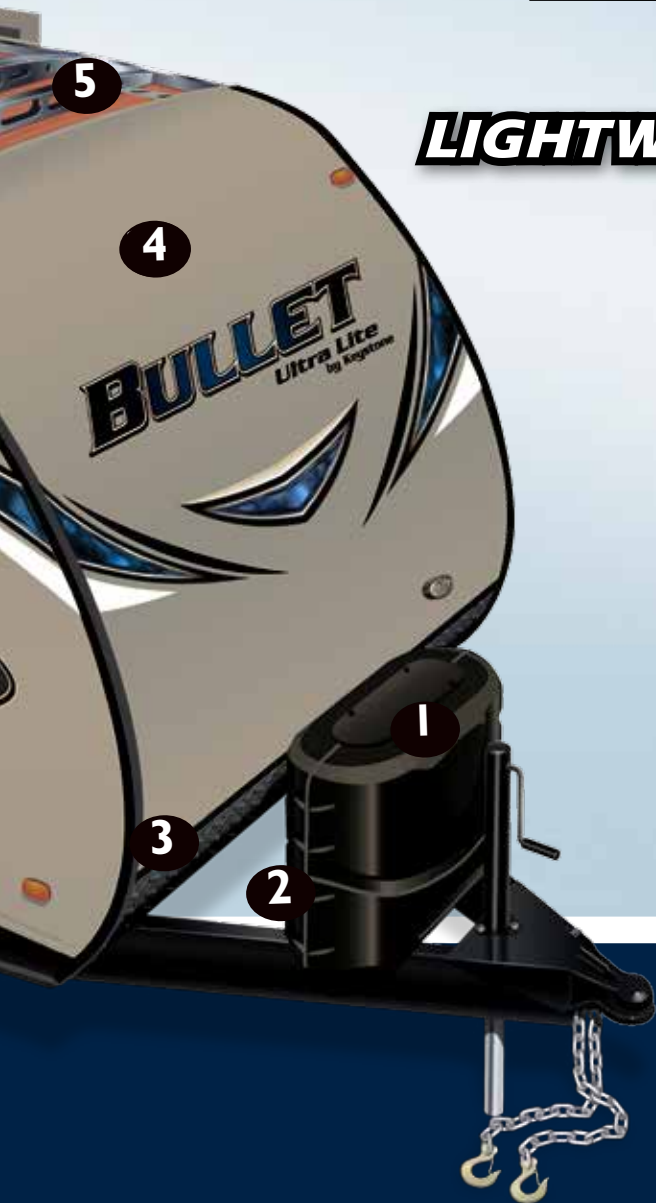
43" WIDE STANCE AXLES

Wider base greatly reduces sway and bouncing

BULLET

Ultra Lite
by Keystone

LIGHTWEIGHT SOLID CONSTRUCTION

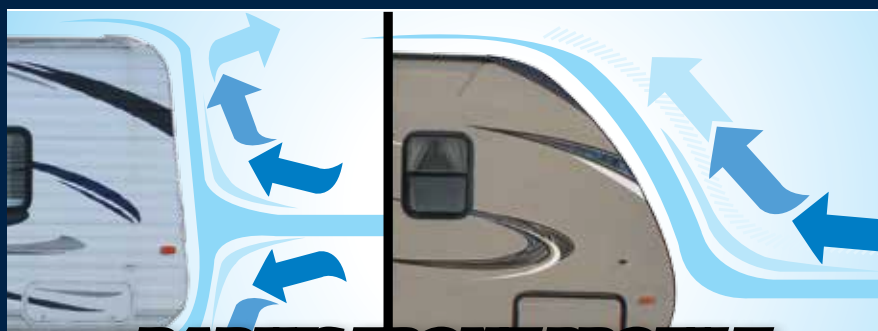


1. Quick Access LP Cover
2. Integrated Dual Battery Tray
3. Diamond Plate Stone Guard
4. Aerodynamic Front Profile
5. Hurricane Straps
6. 5" Radius Galvanized Stamped Steel Roof Trusses
7. Fully Insulated Roof
8. Durable Roof Decking
9. 13.5 Quick Cool Air Conditioning
10. One Piece TPO Roof
11. Full Length Rain Gutter and 4" Drip Spouts
12. Smooth Fiberglass Exterior
13. 1/8" Luan Wall Backing
14. Hi-Density Block Foam Insulation
15. 1 1/2" Box Welded Aluminum Frame Structure
16. Decorative Interior Wall Board
17. Aluminum Frame Slide Boxes
18. Bullet's Multi Seal and Track Slide System
19. Radial Tires with Electric Brakes (4)
20. Wide Stance Axle System
21. Easy Lube Axles
22. Residential Stain Resistant Trek Linoleum (resistant to cold cracking)
23. Plyvener Floor Decking (water resistant)
24. Hi-Density In Floor Block Foam Insulation
25. Double Welded Aluminum Floor Joists
26. 3rd Layer Floor Decking
27. Radius Triple Entry Steps
28. 6.5" - 10" Steel I-Beam Frame
29. Darco Moisture Barrier Wrap
30. Heated and Enclosed Underbelly
31. Aluminum Framed Pass-Thru Storage



SAVE MONEY ON FUEL

Our lightweight floor plans are 1000-1500 lb. lighter than comparable competitors trailers



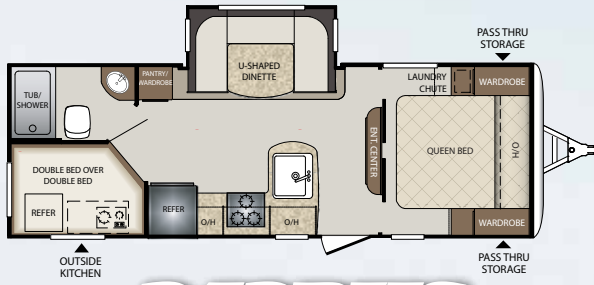
RADIUS FRONT PROFILE VS. COMPETITION

The radius front profile of the Bullet travel trailer gives the optimal contour to reduce wind resistance when traveling down the road.

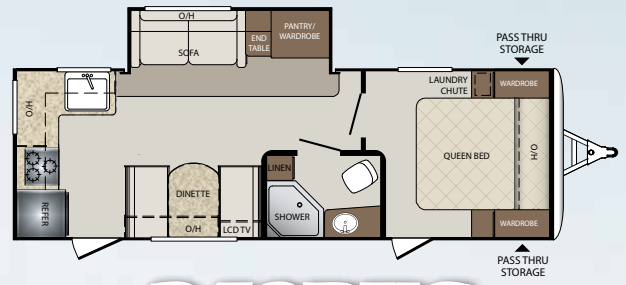
www.keystonerv.com/Bullet
BULLET
 Ultra Lite
 by Keystone



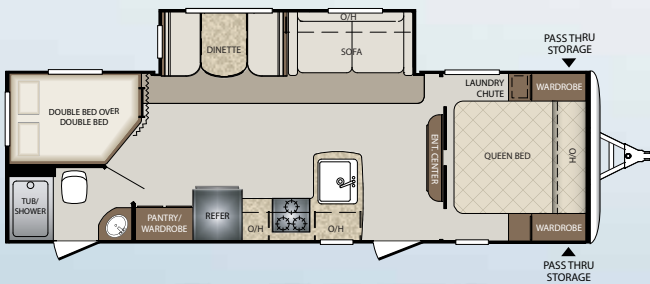
220RBI



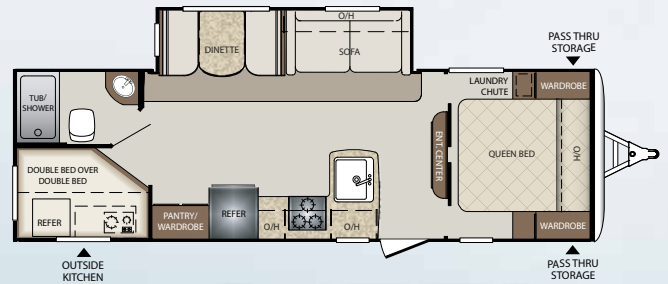
243BHS



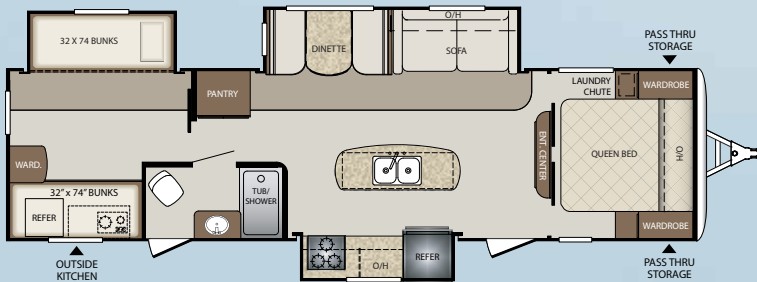
248RKS



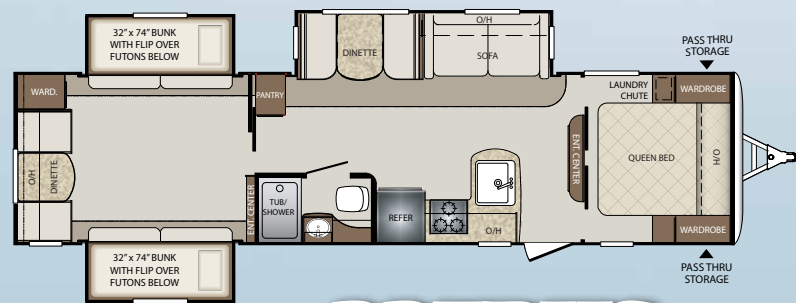
272BHS



274BHS



311BHS NEW



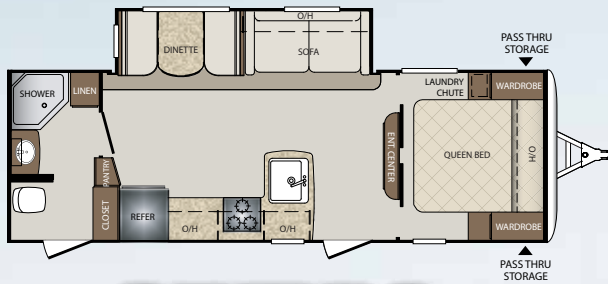
335BHS

Product information is as accurate as possible at the date of publication of this brochure. Features, floor plans, and specifications are subject to change without notice. Please also consult Keystone's web site at keystonerv.com for more current product information and specifications. Tow Vehicle Disclaimer. CAUTION: Owners of Keystone recreational vehicles are solely responsible for the selection and proper use of tow vehicles. All customers should consult with a motor vehicle manufacturer or their dealer concerning the purchase and use of suitable tow vehicles for Keystone products. Keystone disclaims any liability or damages suffered as a result of the selection, operation, use or misuse of a tow vehicle. KEYSTONE'S LIMITED WARRANTY DOES NOT COVER DAMAGE TO THE RECREATIONAL VEHICLE OR THE TOW VEHICLE AS A RESULT OF THE SELECTION, OPERATION, USE OR MISUSE OF THE TOW VEHICLE. *Length is defined as the distance from the centerline of the hitch pin/coupler to rear bumper of the trailer.

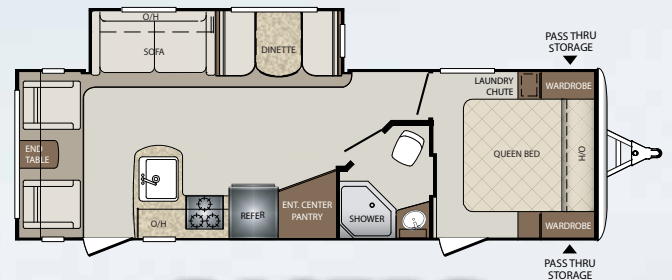


TRAVEL TRAILER FLOOR PLANS

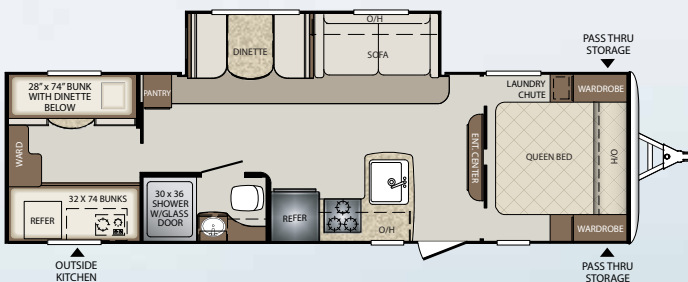
You'll find a Bullet floor plan to fit your lifestyle perfectly.



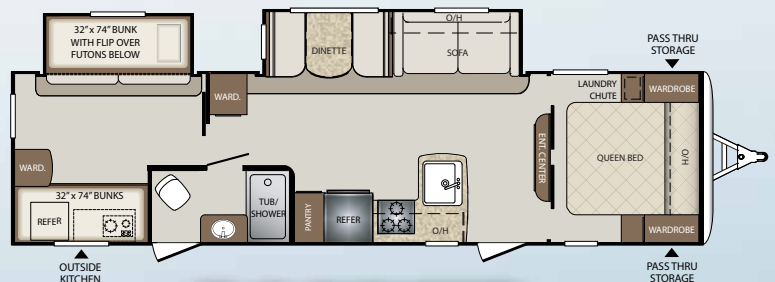
251RBS



269RLS



287QBS



308BHS

WEIGHTS & MEASUREMENTS

MODEL	SHIPPING WEIGHT	CARRYING CAPACITY	HITCH	LENGTH*	HEIGHT	FRESH WATER	WASTE WATER	GRAY WATER	LPG	AWNING
220RBI	4611	1789	450	25' 7"	10' 7"	43	30	30	40	15'
243BHS	4703	1797	555	27' 10"	10' 7"	43	30	30	40	19'
248RKS	4859	1641	535	28' 10"	10' 7"	43	30	60	40	15'
251RBS	4963	2037	500	29' 1"	10' 7"	43	30	30	40	14'
269RLS	5193	2392	585	30' 11"	10' 7"	43	30	30	40	15'
272BHS	5068	2472	540	30' 9"	10' 7"	43	30	30	40	15'
274BHS	5095	2490	585	30' 9"	10' 7"	43	30	30	40	20'
287QBS	5477	2123	695	32' 10"	10' 7"	43	30	30	40	15'
308BHS	5980	1620	700	35' 6"	10' 8"	43	30	30	40	19'
311BHS	6880	1920	865	35' 8"	11'	43	30	60	40	19'
335BHS	6506	2094	865	37'	11'	43	30	30	40	15'

STANDARDS & OPTIONS

CONSTRUCTION STANDARDS

- Aggressive Front Profile for Increased Towability
- Aluminum Framed Front, Rear, and Side Walls
- Aluminum Framed Slideouts
- Laminated Fiberglass Exterior Side Walls
- 2" Thick Laminated Aluminum Floor
- In-Frame Fresh, Grey, and Black Water Tanks
- 6.5" - 10" Steel I-Beam Frame with Welded Outriggers
- ¼" ABS Enclosed Underbelly
- Darco Moisture Barrier
- One Piece TPO Roof
- E-Z Lube Axles
- Electric Brake System (4 wheels)
- R-11 Insulation in Floor
- R-7 Insulation in Sidewalls
- R-11 Insulation in Roof

EXTERIOR CAMPING PACKAGE

- Wide Stance E-Z Lube Axles
- 6 Gallon Gas/Electric DSI Water Heater with quick recovery
- Radius Entry Door with Gas Strut
- Outside Speakers
- Outside Shower (Hot & Cold Water)
- Tinted Safety Glass Windows
- 4 Stabilizer Jacks
- TV Antenna & Cable/Satellite Hook-Up
- Electric Awning with LED Lights and Adjustable Arms
- Radial Tires

EXTERIOR FEATURES

- Black Tank Flush
- Dual Propane Tanks with Cover
- Front Diamond Plate
- In Frame Dual Battery Rack
- Oversized Exterior Pass Thru Storage with Lighting
- Contoured Fender Skirts for Increased Air-Flow
- LP Quick Connect
- Spare Tire
- Extended 4" Down Spouts
- Triple Entry Steps
- Oversized Grab Handle
- Aluminum Wheels

INTERIOR CAMPING PACKAGE

- 13.5 BTU Ducted A/C
- Night Shades
- CD/DVD/AM/FM Bluetooth Stereo with Aux and I-Pod Hookup
- 32" LED TV
- Microwave
- 6 cu./ft. Double Door Refrigerator
- 3 Burner High Output Range
- 9" Deep Oversized Single Basin Sink with High Rise Faucet (N/A 220, 311)
- Glazed Hardwood Cabinet Doors
- Foot Flush Toilet
- Tub Surround with Shelves
- Full Extension Drawer Glides

INTERIOR FEATURES

- 78" Interior Height
- Fiberglass Reinforced Flooring
- Residential Style Furniture
- Water Heater-By-Pass for Winterization
- Night Shades in Living Area
- 17" Oven
- Radius Dinette
- Interior LED Lights

BATHROOM

- Towel Hooks
- Deluxe Curved Shower Curtain
- Power Vent Fan
- Solid Wood Medicine Cabinet
- Linen Storage

MASTER BEDROOM

- Upgraded Foam Mattress
- Dual 110V Outlets
- Mirrored Wardrobes
- Laundry Chute
- Under Bed Storage
- Full Blackout Window Treatments
- Individual LED Reading Lights
- Hardwood Entry Doors

BUNK ROOMS

- Cable & TV Hookups (Per Floor Plan)
- Full Blackout Window Treatments
- Oversized Wardrobe with Rod (Some Floor Plans)
- Wood Pocket Doors

THERMAL PACKAGE

- Ducted Heat & Enclosed Underbelly
- 2" Duct off of Furnace to Underbelly
- 30K BTU Furnace
- Residential Heat Ducts



SAFETY EQUIPMENT

- Carbon Monoxide Detector
- Smoke Alarm
- Fire Extinguisher
- Electric Brakes
- Safety Chains
- Tinted Safety Glass Windows
- Egress Windows (Fire Escape)
- GFI Electrical Outlets

OPTIONS

- 15K A/C
- 50 AMP Service with 2nd A/C (308, 311, 335 Only)
- Bumper Mounted Aussie Grill (N/A 287, 308)
- Tri-Fold Sofa (N/A 220, 243)



Go RVing
Life's A Trip™



YOUR LOCAL DEALER:

Colton RV
North Tonawanda, NY 14120
(716) 694-0188
(800) 628-4889
www.ColtonRV.com

Colton RV
Orchard Park, NY 14127
(716) 957-3250
(800) 628-4889
www.Coltonrv.com



www.keystonerv.com/Bullet
BULLET
Ultra Lite
by Keystone



2642 Hackberry Drive | PO Box 2000
Goshen, IN 46527-2000
(574) 535-2100