

2012

Ever-Lite™

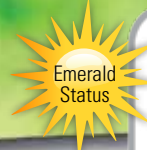
by EverGreen

VALUE - INNOVATION - QUALITY



2012

EVER-LITE™  
by EVERGREEN



**DSI**

17<sup>th</sup> Annual *RVDA* DEALER  
SATISFACTION INDEX  
2010 Award Winner

1st Green Certified  
RV Manufacturer.

WWW.GOEVERGREENRV.COM

# Built Tougher to Outlast the Competition



"No one knows better than me, you have to be tough to win and tougher to outlast the competition."

**Terry Bradshaw**

Official Spokesman for EverGreen



# Understanding the EverGreen Difference



**E**verGreen Ever-Lite™ travel trailers and fifth wheels provide the highest value for your camping investment. EverGreen owners are informed consumers that understand the EverGreen Difference: from a lifetime of worry free camping to a higher resale value when the time comes.

## **ComposiTek™ Construction—**

Composites replace wood throughout the super structure of the coach to create a durable camper that is impervious to moisture to resist rot, mold and mildew. These high-tech composites are vacuum laminated to a fully welded aluminum frame in a seamless, one-piece system that eliminates flex and vibration down the road. Four times the strength of plywood, Ever-Lite™ composite campers are simply built tougher to outlast the competition.

## **Lighter Weight for Better Fuel Efficiency—**

ComposiTek™ construction yields a camper that is 15 to 20 percent lighter than ordinary brands. This means better fuel economy and the option to use lighter tow vehicles. Most Ever-Lite™ campers can be towed by today's half-ton pickups or full-sized SUVs. A lighter weight camper also means increased payload capacity for more gear.

## **Healthier for You and the Environment—**

The extensive use of composites throughout your Ever-Lite™ camper virtually eliminates the out-gassing of Volatile Organic Compounds (VOCs) such as formaldehyde. You will breathe easier in an Ever-Lite™ and feel good knowing you are doing your part to save our planet. Composites replace over 50 sheets of lauan plywood in every Ever-Lite™. Harvesting lauan is responsible for the devastation of tropical rain forests worldwide. When you purchase an Ever-Lite™ we plant a tree in your family's honor under the Trees For The Future Program.



# Travel Trailers



**MODEL 25RB** WEIGHT: 4,250

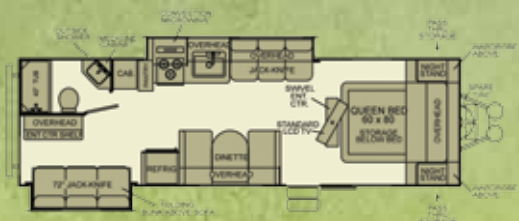


**MODEL 27RB** WEIGHT: 4,540



**MODEL 29FK** WEIGHT: 5,080

# Travel Trailers



**MODEL 31DS** WEIGHT: 5,625



**MODEL 32MKS** WEIGHT: 5,405



**MODEL 31RBK** WEIGHT: 5,775



**MODEL 33QB** WEIGHT: 5,730



**MODEL 31RLS** WEIGHT: 5,360



**MODEL 33QBK** WEIGHT: 6,015



**MODEL 32RBK-DS** WEIGHT: 6,397



**MODEL 34BH-DS** WEIGHT: 6,475



**MODEL 34BHK-DS** WEIGHT: 6,805



**MODEL 35RL-DS** WEIGHT: 6,620



**MODEL 35RLW-DS** WEIGHT: 6,850



Club Lounge Option available on all Deep Slide Models except 32RBK-DS and the 35RLW-DS.

**NEW**

# Fifth Wheels

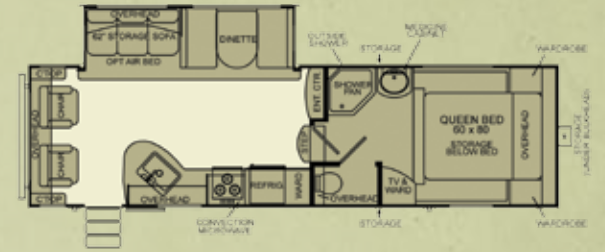




# Fifth Wheels



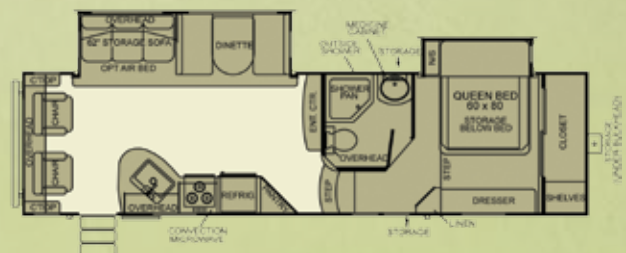
## Mid Profile Fifth Wheels



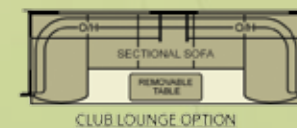
**MODEL 30RLS-5** WEIGHT: 7,570



**MODEL 31RKS-5** WEIGHT: 8,000



**MODEL 32RL-5** WEIGHT: 8,060



Club Lounge Option available on all Fifth Wheel Models

**Every Ever-Lite™ passes the most stringent testing in the industry before it ships. Quality is our first priority!**



Rain Booth Testing  
1/2" per minute



Seal Tech Leak Test



Gas Test - PDI



Water Pressure Test - PDI



Electrical Testing - PDI



Color Coded Wire Schematic



Weight Scales Recessed In the Floor



Systems Check - PDI



## EverGreen RV has done it again!

Take a look at the Campfire Kitchenette. Built with sustainable composites, stainless steel and aluminum, the new "Campfire Kitchenette," is crafted with EverGreen's virtually wood-free CompositiTek™ construction to be as durable and long lasting as the Ever-Lite™ camper.

The Campfire Kitchenette includes: a refrigerator, a two-burner, slide-out cook top, stainless steel sink, retractable spray faucet, liquid soap dispenser, and plenty of polished hooks for towels, oven mitts, and cooking utensils. It also includes a spice/condiment rack, 110V-GFI power outlet, steel cabinets with positive latches, and aluminum drawers with commercial stainless steel slides.

## Better Gets Bigger with Deep Slide Travel Trailers

Campers that want more space will love the Deep Slide models. Travel trailers with the Deep Slide increase the living space significantly with 42-inch slide-outs that are a full 6-inches larger than conventional 36-inch slide-outs found in most RVs.

This extra space is packed with amenities like a 90-inch U-shaped dinette with a free standing table, countertop extensions and a larger side aisle bathroom. An air mattress hide-a-bed sofa is available to make room for two more campers. The fresh water and holding tanks have a larger capacity for more people. 15-inch wheels are standard with optional 16-inch available.

The EverGreen four-point, gear-driven slide-out is engineered to simultaneously open and close all corners. This provides a tighter seal when closed and ultra smooth operation.

## Economical & Eco-Friendly

You've probably noticed the *e<sup>2</sup>* logo in our literature and website. *e<sup>2</sup>* symbolizes EverGreen's commitment to build recreational vehicles that are both economical and eco-friendly to own. EverGreen is the first RV manufacturer to achieve the Green Certified Emerald rating by TRA Certification Inc., an internationally accredited certification organization. Emerald is the highest of four designations offered by TRA. EverGreen leads the industry in environmental responsibility—but not at the expense of comfort or value.

Thank you for taking a look at the Ever-Lite™ 2012 model year lineup. When you choose an Ever-Lite™, you are choosing an RV designed for comfort, beauty, and style with no compromises on our eco-friendly promise. Plus as good as they look...they are still built tougher to outlast the competition.

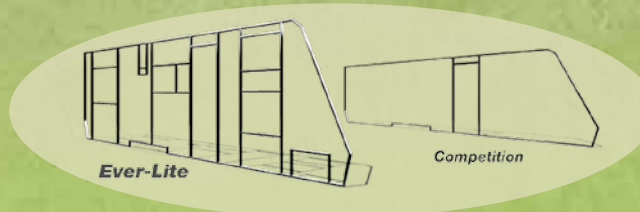




# The Ever-Lite™ Advantage: *We've Got It! Standard.*



Our CompositTek™ Construction is Built to Last!



**STRONGER!**

## KEY FEATURES

1. 6" / 8" Solid I-Beam Chassis
2. Fully Enclosed and Heated Underbelly
3. Nitrogen-Filled/Self-Balancing Radial Tires with Improved Clamp Force Technology
4. CompositTek™ Aluminum Framed Bonded Floor
5. CompositTek™ High-Gloss Aluminum Framed Bonded Wall
6. CompositTek™ Aluminum Framed Bonded Roof
7. Composite Solid Baggage Door with Compression Latches
8. Deep Tint Radius Safety Glass Windows
9. LCD TV Exterior Hook-Up with Outside Speakers
10. Fiberglass Composite Gel Coated Front Fiberglass Cap with LED Lights
11. Power Awning
12. Porch / Safety Light Combo (Two Lights in One)



High output fan with Maxxair vent



Skylight with shade in all travel trailers



LED interior lights



Waste recycle bin



Convection microwave oven



Comfort fiber eco pillow top innerspring mattress



Digital waste & fresh water tank monitors

## The Ever-Lite™ CompositTek™ Construction Challenge



These three sidewall samples (2 from Evergreen and 1 from a competitor) were placed in an aquarium on February 9, 2010.



The sample on the left is how the Ever-lite™ wall sample looked after roughly 7 months of sitting in water. The picture on the right is how it originally looked. No signs of any delamination, mold, rot or algae.



The second sample was from the floor of an Ever-lite™ (left) and how it originally looked (right). No signs of any delamination, mold, rot or algae.



The final sample was from a competitor's product. Notice the black mold and rot on the luaun wood paneling and the algae growing on the styrofoam.



# Decor



Latte' Decor



Horizon Decor



Truffle Decor

# Specifications

All specifications are subject to change without notice or obligation. Some features shown on plans may be optional or not available in Canada. This brochure applies to all Ever-Lite™ models built after 11/10.

	..... Travel Trailers .....									..... Deep Slide Travel Trailers .....					..... Fifth Wheels .....		
	<b>25RB</b>	<b>27RB</b>	<b>29FK</b>	<b>31DS</b>	<b>31RBK</b>	<b>31RLS</b>	<b>32MKS</b>	<b>33QB</b>	<b>33QBK</b>	<b>32RBK-DS</b>	<b>34BH-DS</b>	<b>34BHK-DS</b>	<b>35RL-DS</b>	<b>35RLW-DS</b>	<b>30RLS-5</b>	<b>31RKS-5</b>	<b>32RL-5</b>
<b>Total Dry Weight* (UVW):</b>	4,250	4,540	5,080	5,625	5,775	5,360	5,405	5,730	6,015	6,397	6,475	6,805	6,620	6,850	7,570	8,000	8,060
<b>Dry Hitch Weight* (LBS):</b>	585	695	670	625	605	730	755	680	670	750	905	845	750	935	1,350	1,850	1,760
<b>GVWR* (LBS):</b>	5,645	5,995	6,695	7,375	7,350	6,995	7,195	7,425	7,420	8,595	8,795	9,195	8,995	9,295	9,895	10,495	10,495
<b>Fresh Water Capacity (GAL):</b>	40	40	40	40	40	40	40	40	40	53	53	53	53	53	53	53	53
<b>Gray Water Tank Capacity (GAL):</b>	29	29	58	29	29	29	58	29	29	58	29	29	58	58	58	58	58
<b>Black Water Tank Capacity (GAL):</b>	29	29	29	29	29	29	29	29	29	29	29	29	29	29	29	29	29
<b>LP Capacity (LBS):</b>	60	60	60	60	60	60	60	60	60	60	60	60	60	60	60	60	60
<b>Cargo Carrying Capacity* (LBS):</b>	1,063	1,123	1,283	1,418	1,243	1,303	1,458	1,363	1,073	1,708	1,830	1,900	1,885	1,955	1,835	2,005	1,945
<b>Overall Length:</b>	25'-11"	27'-7"	29'-8"	32'-5"	32'-5"	31'-8"	33'-7"	34'-1"	34'-1"	32'-5"	34'-9"	34'-9"	35'-9"	35'-9"	30'-11"	31'-10"	32'-4"
<b>Height (including A/C):</b>	10'	10'	10'	10'	10'	10'	10'	10'	10'	10'-8"	10'-8"	10'-8"	10'-8"	10'-8"	12'-1"	12'-1"	12'-1"
<b>Width:</b>	8'-1"	8'-1"	8'-1"	8'-1"	8'-1"	8'-1"	8'-1"	8'-1"	8'-1"	8'-1"	8'-1"	8'-1"	8'-1"	8'-1"	8'-1"	8'-1"	8'-1"
<b>Bed Size:</b>	60" x 80"	60" x 80"	60" x 74"	60" x 80"	60" x 80"	60" x 80"	60" x 80"	60" x 80"	60" x 80"	60" x 80"	60" x 80"	60" x 80"	60" x 80"	60" x 80"	60" x 80"	60" x 80"	60" x 80"
<b>Power Awning Length:</b>	16'	18'	20'	16'	16'	16'	18'	18'	18'	16'	18'	18'	20'	20'	20'	20'	20'
<b>Tire Size:</b>	----- ST205/75 R14-C Tires -----									----- ST225/75 R15-D TIRES -----					---- ST225/75 R15-D TIRES ----		

**WEIGHT TERM GLOSSARY:**

**Gross Vehicle Weight Rating (GVWR)** is the maximum allowable weight of the trailer when fully loaded including all personal possessions, propane gas, water, and the actual trailer.

**Unloaded Vehicle Weight (UVW)** is the weight of the trailer. **Cargo Carrying Capacity (CCC)** is equal to the GVWR minus each of the following: UVW, full fresh water weight including the water heater capacity, and full propane.

\* All weights are approximate

**Every RV is weighed prior to shipping and its exact weight is provided with the trailer.**

## EXTERIOR

- Bright aluminum wheels -automotive grade
- LED exterior lights improve visibility
- Automotive bronze high gloss gel coat exterior
- Aluminum framed, dark tinted safety glass windows
- Diamond plated steel rear bumper with sewer hose storage
- Door side patio and scare lights
- Exterior speakers
- Front and rear stabilizer jacks (4)
- Diamond plate front stone guard
- ComposiTek™ exterior
- LCD TV bracket/hook up
- Composite baggage doors
- Locking fresh water fill
- Maxxair vent -bedroom

## INTERIOR

- Skylight w/shade (living area-travel trailers only)
- LED interior lighting package
- Accordion-style dividers (where applicable)
- Screwed and glued cabinetry/solid wood doors
- Ceiling crown moldings
- Décor mirror
- Jalousie crank-out windows for use in the rain
- Raised panel wood overhead cabinet doors
- Raised panel interior passage doors
- Decorative border
- Wall mounted interior light switches
- Padded “no crack” vinyl flooring throughout
- Over-stuffed upholstery

## KITCHEN

- Power exhaust range hood with light
- Plywood drawers with ball bearing guides
- Double door refrigerator/freezer
- 3 burner range
- Folding range cover
- Convection microwave oven
- Full-size composite sink w/cover
- Goose neck spray faucet
- Aluminum framed dinette
- Venetian window blinds

## BATHROOM

- Skylight over shower/tub
- Large medicine cabinet/mirror
- Recessed vanity light
- Full tub/shower surround
- Hand sprayer in shower/tub
- Power exhaust fan

## BEDROOM

- Inner spring fiber pillow top eco-mattress
- Bullet reading lights above bed
- Lift up bed with gas struts and storage
- TV jack and LCD TV bracket
- Night stands w/power outlets

## UTILITIES

- Satellite/cable hook-ups
- High capacity furnace
- Water pump w/winterizing inlet
- LP quick disconnect (gas grill ready)
- CO, LP, smoke detectors
- Fire extinguisher
- Digital tank monitors
- One touch systems monitor panel
- 55 amp converter w/shore line
- LP harness and machine crimped fittings
- Switched awning light receptacle (110V)
- Door side lower receptacle (110V)
- Gear driven 4-point slide (DS models)

## EVER-LITE™ VALUE PACKAGE (INCLUDED)

- Fully enclosed, heated underbelly
- 6 side aluminum structure (3 yr warranty)
- AM/FM/CD/DVD w/interior/exterior speakers
- 30# LP tanks w/hard shell cover
- 6 gallon gas/electric water heater with DSI
- Porcelain toilet w/foot flush pedal
- High output exhaust fan in bedroom w/Maxxair cover
- Outside shower
- Ever-Lite™ smooth ride suspension
- A&E power awning
- Spare tire and carrier
- Black tank flush
- Swing out grab bar
- Pleated shades
- Fiberglass front cap with LED lights
- 13,500 BTU ducted A/C quick chill function
- Nitrogen-filled self-balancing tires
- Improved Clamp Force technology wheels
- Omni directional TV/radio antenna

## FIFTH WHEEL STANDARDS

- 15” Balanced, radial, nitrogen filled aluminum wheels
- 24” LCD TV
- Laundry chute
- 42” main slide depth 6’- 2” interior height
- Gear driven – 4-point slide system
- Electric front jacks w/snap pins

## TRAVEL TRAILER & FIFTH WHEEL OPTIONS (ALL MODELS)

- 15k BTU air conditioner
- Gas oven
- Solar battery charger
- Dual pane awning windows
- 10 blade power fan in bathroom

## TRAVEL TRAILER OPTIONS (ALL MODELS EXCEPT AS NOTED)

- 20” LCD flat panel TV
- 24” TV (31DS, 31RBK, 33QB, 33QBK only)
- 2nd TV/DVD (N/A on 25RB, 27RB, 31RBK)
- Booth dinette (only available on 25RB)
- Composite 20# LP tanks
- Twin Beds (29FK only)
- Power tongue jack
- Power stabilizer jacks front and rear

## DEEP SLIDE TRAVEL TRAILER OPTIONS ONLY

- 16” Balanced aluminum wheels
- 50 Amp w/2nd A/C Prep
- 2nd 13.5 A/C (Requires 50 Amp/Prep opt.)
- 24” LCD TV upgrade
- 2nd LCD/DVD
- Hide-a-bed air mattress
- Free standing table w/(4) chairs in place of booth Dinette
- Solid surface counter tops (kitchen only)
- Wall hugger recliners (no swivel or rock)
- Club lounge seating (Except 32RBK-DS & 35RLW-DS)

## FIFTH WHEEL OPTIONS

- 16” balanced aluminum wheels
- Electric rear stabilizer jacks
- 32” LCD TV (in place of 24”)
- 20” LCD TV w/DVD (bedroom only)
- 50 amp w/2nd A/C Prep
- 2nd 13.5 A/C (Requires 50 Amp/Prep opt.)
- Free-standing table w/4 chairs
- Hide-a-bed air mattress
- Slide-out bike rack
- Reese Revolution hitch
- Work station P/O swivel chair (31RKS-5)
- Club Lounge seating
- Solid surface countertops (kitchen)
- Wall hugger recliners

## ADDITIONAL ITEMS

- 3-year limited structural warranty
- 2-year limited bumper to bumper warranty
- 12-year limited roof warranty
- Green Way Peace Of Mind: 24/7/365 Camp Side/Roadside Assistance Program



We go above and beyond RVIA quality standards set by our industry - focused on green products and manufacturing processes.



### EverGreen Warranty

- Three (3) year limited structural
- Two (2) year bumper to bumper
- 12 year roof material warranty

### Buying Local - Your Best Option

- Enjoy the convenience of local representatives who will help you understand all the features of your new RV and answer any questions you have.
- Before taking your new RV home, you'll receive a complete walk-through demonstration of all of its systems and options and will be introduced to several key members of the dealer's staff who will be able to help you with any future questions.
- Your local dealership routinely gives their own customers priority scheduling when it comes to scheduled maintenance and/or repair work. Making sure you're one of their local customers saves you time by getting you scheduled sooner!
- Keeping your hard-earned dollars in the local community helps keep jobs available, schools open, and pays for various public services such as fire, police and ambulance.



"I'm very proud to be associated with a company that has achieved all that EverGreen has in such a short time. It's clear to me that EverGreen has a winning team and a winning product."  
~Terry Bradshaw

- Towing of Any Size RV Throughout the United States and Canada
- Flat Tire Assistance • Emergency Fluid Delivery
- Fuel Delivery • Free Jump Starts • Free Locksmith
- Free Trip Mapping Service and Full Color Map Service
- \$1,000 Reward Offered for Auto Theft or Hit and Run
- \$2,000 Trip Interruption Reimbursement
- Free Travelers Checks

Coach-Net® The Most Trusted Name in the RV Industry

### Your Authorized EverGreen™ Dealer:

Colton RV  
North Tonawanda, NY 14120  
(716) 694-0188  
(800) 628-4889  
www.ColtonRV.com

Colton RV  
Orchard Park, NY 14127  
(716) 957-3250  
(800) 628-4889  
www.Coltonrv.com



www.GoEverGreenRV.com

10758 County Road 2 • Middlebury, IN 46540  
Phone: (574) 825-4298 • Fax: (574) 825-4299



17<sup>th</sup> Annual RVDA DEALER  
SATISFACTION INDEX  
2010 Award Winner



Service available  
throughout the  
USA and Canada