



SIERRA

SIERRA T292RL



SEABREEZE INTERIOR



Welcome to the new SIERRA Travel Trailer. Our Travel Trailer line is designed with comfort and convenience in mind. From the kitchen with it's extra storage space, large drawers complete with ball-bearing drawer guides, and countertop extension. To the bedroom where you will find our exclusive Serta®

Dreamscape mattress, perfect for a great nights sleep. "We make the world's best mattress." We have also redesigned our Front Cap (Below), to give you the ultimate in aerodynamic styling for easier towing.





The new model year has brought many changes to the living area of our Travel Trailer line. Shown here is the 291RE. We have designed a pop-up entertainment center (Right), that allows you to conveniently stow away the Flat-Screen LCD HD TV when not in use, allowing in plenty of natural light through our large panoramic living room windows.





SIERRA T291RE

SANDSTONE INTERIOR

SIERRA F391QB



ESPRESSO INTERIOR



Take a look inside the luxurious 391QB, with the elegant interior we have left nothing to chance, our interior design team worked along with our engineers to create the ultimate floorplans for family living. The 391QB Master Suite with it's King Bed and innovative shoe storage was designed with spaciousness, comfort and luxury in mind.

The huge bunk area with it's own entertainment center provides plenty of room for the kids and their belongings. (Sleeps up to 10 people)

You will feel right at home in the Espresso interior with it's warm and inviting soft tones.



The 356RL is designed to entertain. It has a kitchen island complete with stone cast undermount kitchen sink and high rise faucet.

The free standing dinette combined with the panoramic windows bring the outdoors in when it's time to enjoy your latest culinary creation.

When it's time to relax enjoy the comfort of the glider recliners.

Finally end your day in your luxurious and spacious Master Suite.





SIERRA F356RL

COGNAC INTERIOR

SIERRA FEATURES



SIERRA along with Forest River is proud to exclusively offer you La-Z-Boy® Comfort on the Road



The Whole-Unit Water Filter Ensures Pure Water for Your Family.



Rest Comfortably on the Serta® Dreamscape mattress designed exclusively for Forest River.



SIERRA's High Rise Faucet Compliments the Undermounted Stone Cast Sink for perfect Entertaining



SIERRA's Full Extension Ball-Bearing Drawer Guides Give You Access to the Whole Drawer, Superior Strength, and will Provide Years of Smooth Operation.



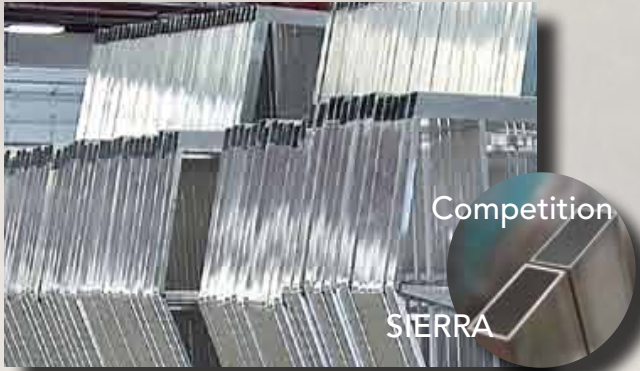
SIERRA's Screwed and Glued Real Wood Cabinet Stiles VS. Stapled Particle Board.



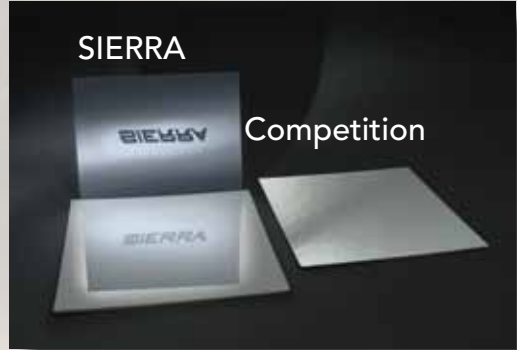
SIERRA's 5/8" Tongue in Groove Plywood Floor Decking VS. Competitions Particle Board.



SIERRA's Aluminum Framed Bunks Provide You with Superior Support.



Heavier Gauge, Lightweight Welded Aluminum Superstructure is Regarded as the Industry's Best.



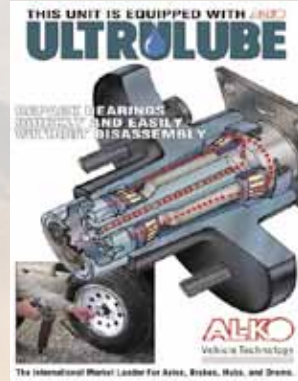
The High-Gloss Gel Coat Protects from UV Rays, and prevents Yellowing & Cracking.



The Fully Enclosed Underbelly Provides Protection from the Elements for an extended camping season



SIERRA's Aluminum Rims Provide You with Quality and Style. (Optional on Travel Trailers)



Ultralube Axles make greasing your bearings easy for a smooth ride.



The Newly Designed Front Cap Makes for Aerodynamic Towing, and Parking the SIERRA a Breeze.



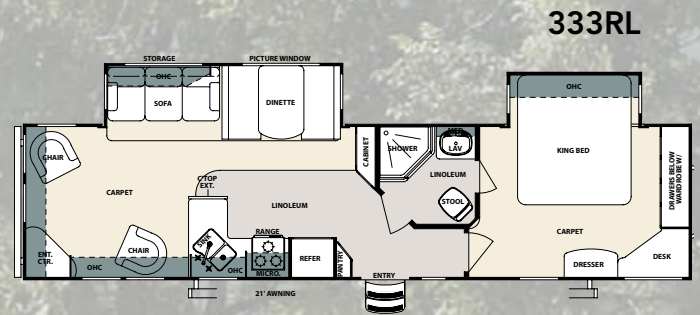
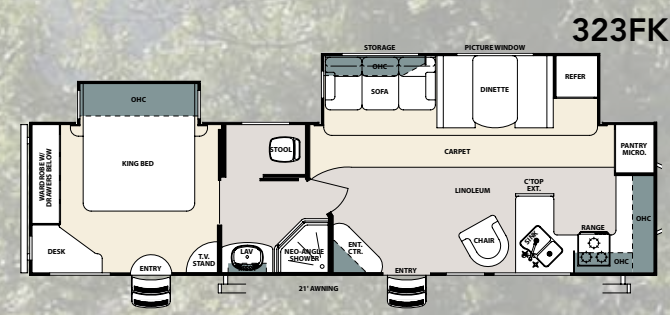
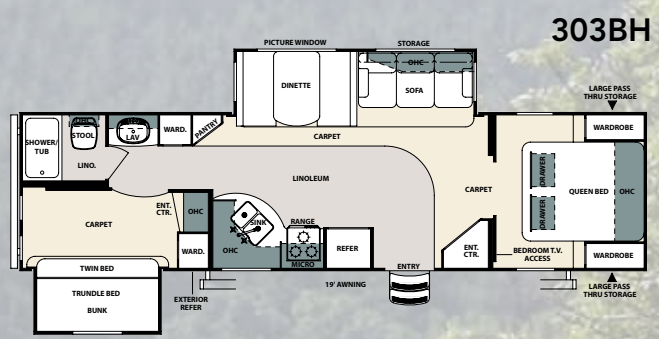
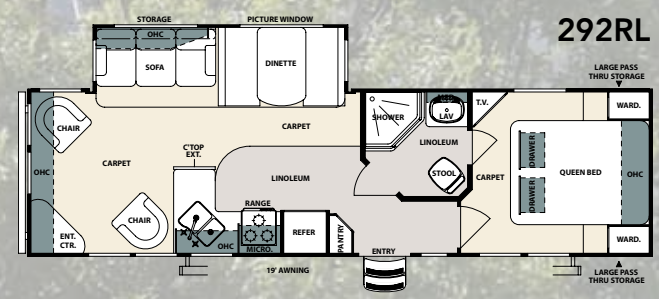
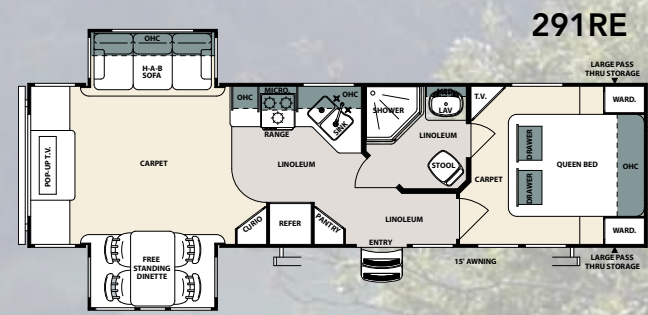
SIERRA's Insulated & Laminated Bath Deck protects you from all climate changes.



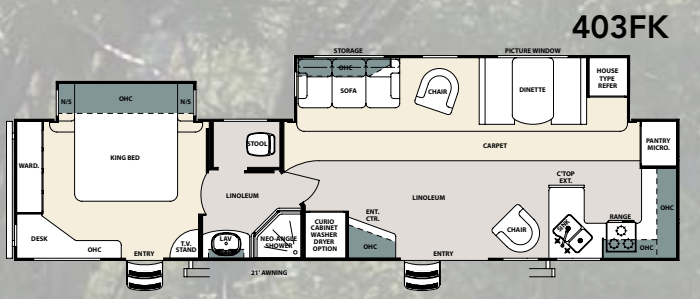
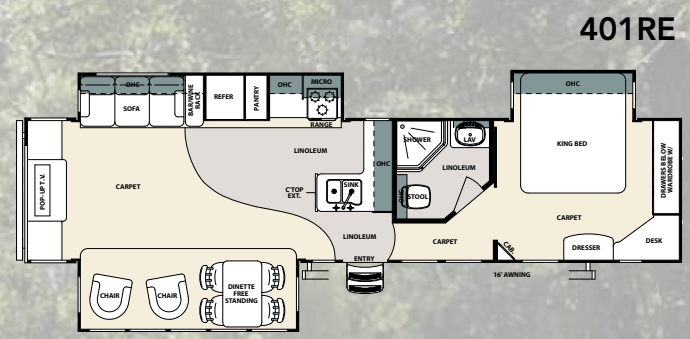
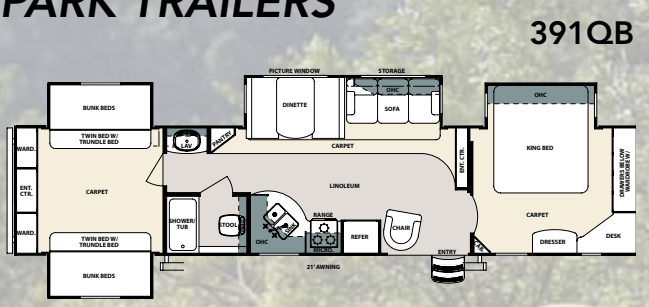
The 2 Quick Connect Spray Ports Makes Clean-up a Snap.



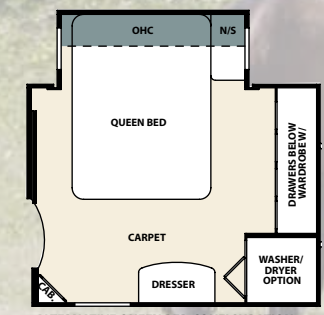
The Standard Black Tank Flush Keeps Your Black Tank Clean and Sanitary.



PARK TRAILERS



Model	Hitch	Ship	GVWR	Length	Height	Awning	Gray	Black	Fresh
291RE	817	7,298	11,217	33' 11"	11' 6"	16'	108	54	52
292RL	736	7,125	11,136	32' 7"	11' 6"	19'	108	54	52
303BH	938	8,194	11,338	34' 10"	11' 6"	19'	88.5	32	54
323FK	817	8,660	11,217	35' 11"	11' 6"	19'	108	54	54
333RL	1,224	8,720	11,624	36' 11"	11' 6"	21'	108	54	54
391QB	1,334	10,569	13,334	42' 0"	11' 9"	21'	54	54	54
401RE	TBA	TBA	TBA	TBA	11' 9"	16'	108	54	54
403FK	1,506	9,736	13,506	41' 3"	11' 9"	21'	108	54	54

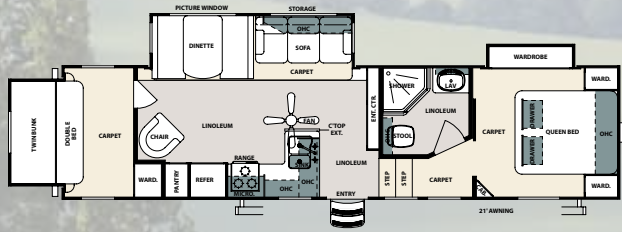


ALTERNATIVE QUEEN BED CONFIGURATION AVAILABLE FOR 401RE AND 391QB

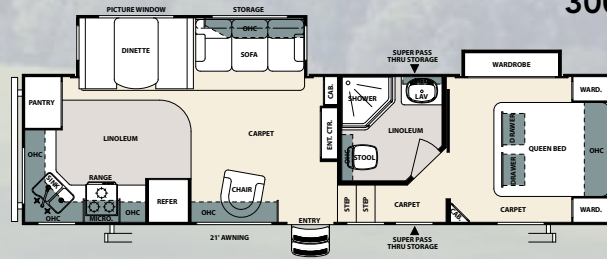
300 SERIES

FIFTH WHEELS

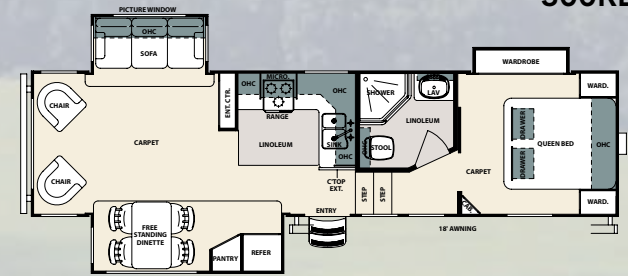
300BH



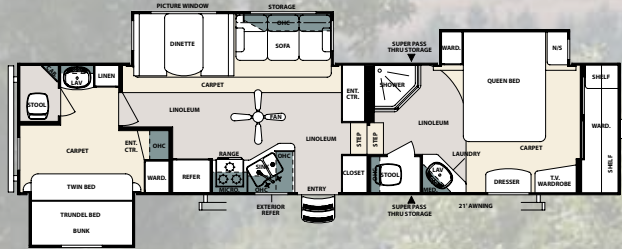
300RG



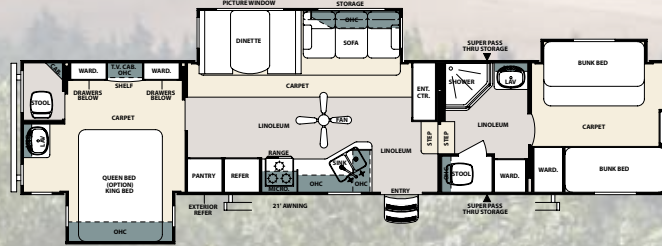
300RL



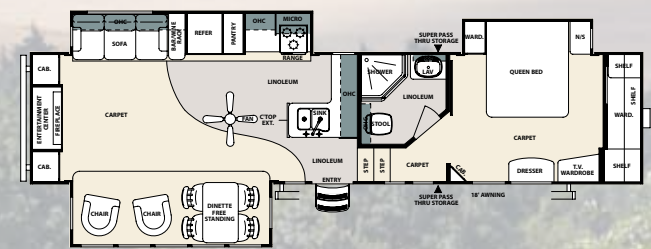
316BHT



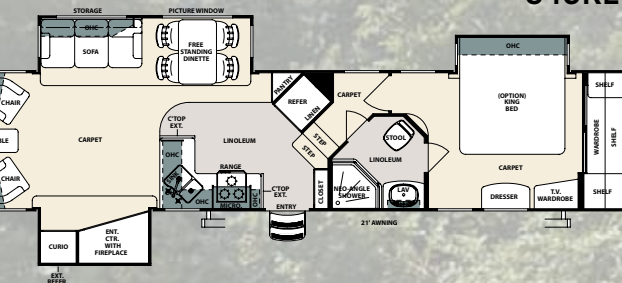
345QB



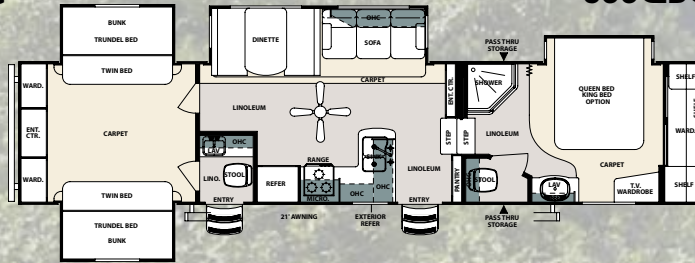
345RET



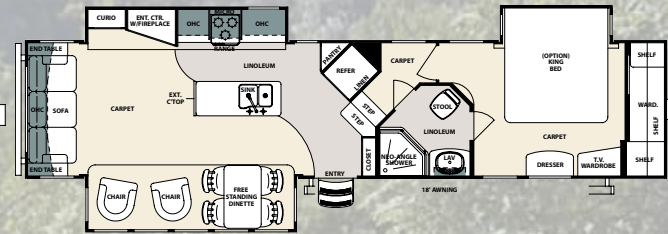
345RLG



355QBQ

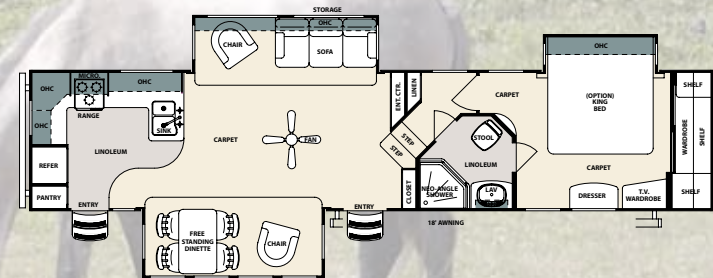


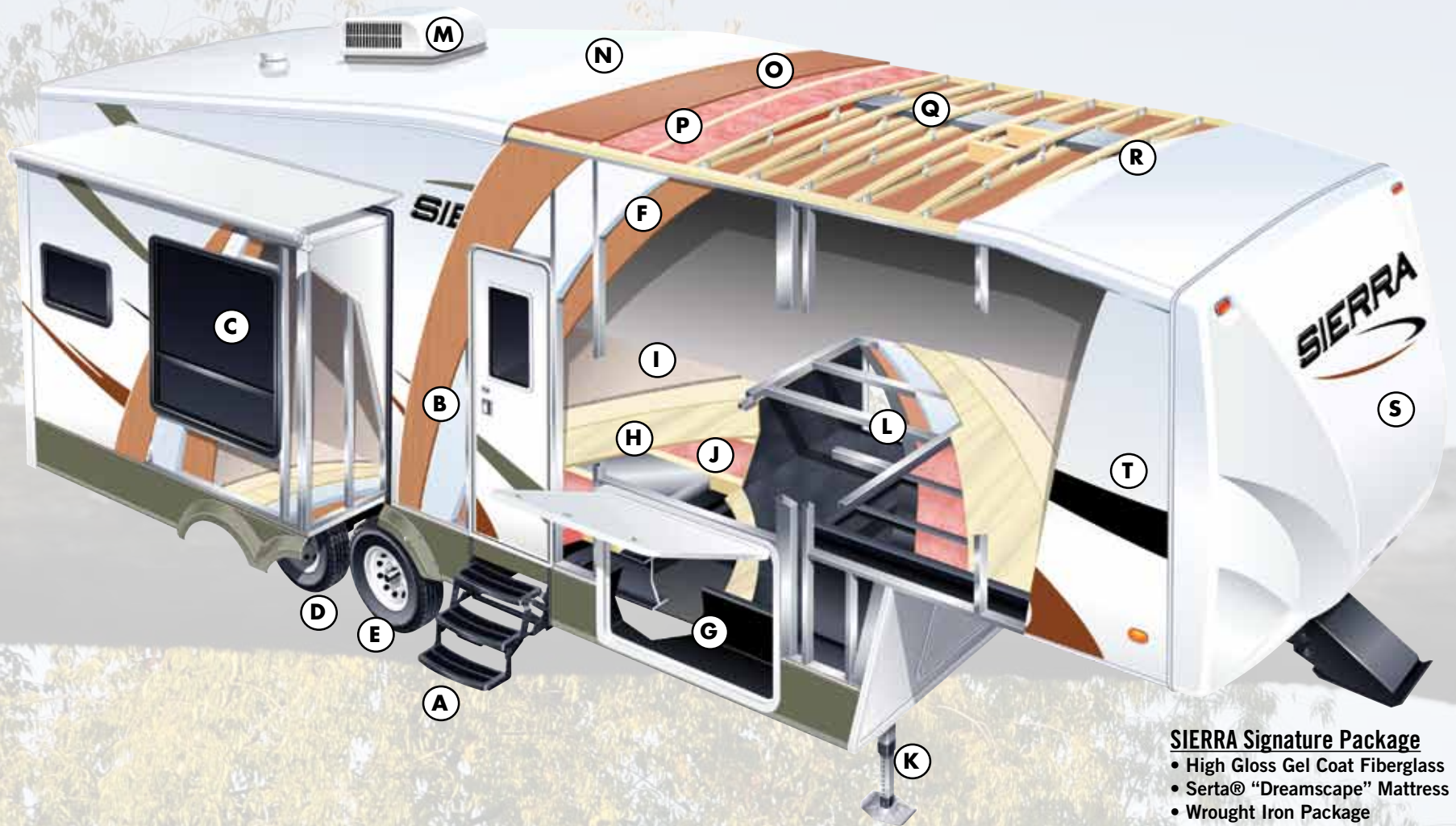
356RL



Model	Hitch	Ship	GVWR	Length	Height	Awning	Gray	Black	Fresh
300BH	2,389	10,366	14,389	33' 11"	12' 11"	21'	108	54	54
300RG	2,304	9,454	14,304	33' 10"	12' 11"	21'	108	54	54
300RL	2,564	10,381	13,994	33' 8"	12' 11"	21'	54	54	54
316BHT	2,099	10,712	14,099	38' 5"	13' 0"	21'	108	108	54
345QB	2,326	11,064	14,326	39' 10"	13' 1"	20'	108	108	54
345RET	2,175	10,983	14,175	38' 11"	12' 9.5"	18'	108	54	54
345RLG	2,017	10,665	14,017	39' 1"	12' 9.5"	21'	108	54	54
355QBQ	1,923	11,185	13,923	39' 3"	13' 0"	21'	108	108	54
356RL	2,154	10,876	14,154	39' 4"	12' 10"	18'	108	54	54
365RG	2,305	10,959	14,305	40' 9"	12' 9.5"	18'	108	54	54

365RG





- A Lighted Main Triple Entry Steps
- B Folding Entry Assist Handle
- C Tinted Windows
- D Ultra Lube Axles
- E Radial Tires
- F Laminated Vacuum Bonded Aluminum Sidewalls
- G 10" I-Beam Powder-Coated Frame

- H 5/8" Tongue & Groove Plywood Flooring
- I 30 oz. Carpet w/ Padding
- J Block Foam Insulation
- K Power Front Jacks
- L Aluminum Laminated Bath Deck
- M Ducted 13.5 K BTU Air Conditioning.
- N Seamless Rubber Roof (12 yr. Warranty)
- O 3/8" Roof Decking (Full Walk-On Roof)

- P Fiberglass insulation
- Q Insulated Duct for Central Air STD. (all Models)
- R 5" Truss Roof Rafters (16" On Center)
- S Front Fiberglass Cap (STD.)
- T Gel Coat Fiberglass with High Gloss Exterior
- U Motorized Radius Roof Edge

SIERRA Signature Package

- High Gloss Gel Coat Fiberglass
- Serta® "Dreamscape" Mattress
- Wrought Iron Package
- Flat Screen LCD/HD TV (sizes vary per floorplan)
- Tube TV in Travel Trailers (per floorplan)
- AM/FM CD/DVD Player w/MP3 Capabilities
- Home Theater Surround Sound System
- Water Filter System
- Fantastic Fan in Bath
- CO₂ Detector
- Wire and Brace for 2nd A/C
- 50 Amp Service
- 10 Gal. DSI Water Heater
- Spare Tire Kit
- Upgraded Rims

EXTERIOR FEATURES

- New Aerodynamic Fiberglass Front cap with improved turning radius
- Ultralube™ axles
- Large Tinted windows with 80/20 UV Prohibitor
- ① Radius Triple step w/9" riser
- Dometic™ "One-Touch" Electric Awning w/ individual adj. arms
- Power front jacks (5th's)
- 16" Radial tires-E Rated (5th's)
- Automotive-style fender skirts
- Hitch light
- ② Exterior refrigerator (per floorplan)
- Porch light w/interior switch
- Step light – main entrance
- Patio Recreation light with interior switch
- ③ 30 lb. double LP tanks w/auto changeover
- Roof ladder (Std. on 5th's)
- Black Tank Flush
- 2 Exterior Speakers
- Rain Gutters With Extra Long Drip Spouts (prohibits black streaking)
- Insulated Heavy Duty Lockable Baggage Doors
- Exterior Foldable Grab Handle
- ④ Pass-Through Storage Area
- 2 Spray Ports with 25' hose (one on each side)

INTERIOR FEATURES

- 84" interior height w/ 6'4" slide heights(5th's)
- Four color coordinated interiors (Cognac, Seabreeze,Sandstone, Espresso)
- ⑤ Full Extension Ball bearing drawer glides
- Stone Cast Under mounted Kitchen Sink
- Handmade Cabinetry with Screwed Lumber core stile construction
- Solid Hardwood Main Slideout Fascia
- Self Edged Residential Countertops
- Extra Large Picture Windows throughout
- Vented side windows in slideouts
- TV antenna w/booster
- Surround sound TV hook-up
- Solid oak drawer fronts w/pine sides
- Raised panel cabinet doors (uppers and lowers)
- Bedroom Slideout Fascia
- Neo angle shower w/glass door (where available)
- Designer Window treatment accented per Decor
- Overhead cabinet in slideout
- Residential Black panel Refer Door Insert
- ⑥ Ceiling Fan w/Lighting Kit (5th's)
- High Rise Kitchen Faucet
- 2 Decorative Throw Pillows on Sofa
- Upgraded Decorative lighting throughout
- King bed (where available)
- Sofa w/ air mattress
- 24 oz. carpeting
- Center mounted A/C unit
- Trundle beds under bunks
- Quilted bedspread
- Shower Surround with Etched Tile Pattern

APPLIANCES/SYSTEMS

- Ducted Dometic® 15K A/C with quick cool
- Floor Ducted 35,000 BTU Furnace
- Three burner high output range w/ 22" oven
- 8 Cubic Ft. Double Door Refrigerator
- Interior Monitor Panel for Holding Tanks
- Interior Thermostat for Heating and Cooling
- Flush Floor Hydraulic Slideouts (per floor plan)
- Satellite and Cable Hookup with RG-6 cable for high quality picture

CONSTRUCTION

- Welded Aluminum-framed, Vacuum Bonded Laminated Superstructure
- 2" x 3" floor joists 12" on center
- 5/8" tongue & groove plywood floor decking
- 3/8" roof decking (full walk-on roof)
- Cambered Powder Coated frame with Rust Prohibitor
- Fully Enclosed underbelly, insulated with radiant heat.
- 5" truss roof rafters
- R-10 sidewall construction
- Laminated and Fully insulated Bathroom Floor Deck (5th's)

POPULAR OPTIONS

- La-Z-Boy Recliner IPO Swivel Rocker
- Raised Mahogany refrigerator door insert
- Decor Matching, Swivel, Glider Recliner(s) (per floorplan)
- Free-standing dinette with 4 chairs
- Washer/Dryer prep
- Sofa IPO Bottom Bunk (per floorplan)
- Aluminum wheels (Travel Trailers)
- Second air conditioner-Bedroom
- Serta® Dreamscape Euro-top mattress
- Fantastic fan with Power Hood operated with wall switch
- Slide Room Awnings
- 12 Volt Heated Holding tanks
- Equaflex™ Equalizer System
- Hide-A-Bed w/Air Mattress & Hidden Storage Drawer

FOR YOUR SAFETY

- Smoke Alarm
- Fire extinguisher
- Breakaway switch (Battery hook-up required)
- Dead-bolt lock on entry door
- Liquid Propane (LP) Gas detector
- Fire escape windows



Forest River Encourages You to Buy Locally

Forest River, Inc. strongly encourages our retail customers to purchase from their local dealership whenever possible due to the following factors:

- Our Dealers are as a rule, independently owned and operated businesses. Outside of those customers they personally sold products to, they are not contractually obligated to perform warranty service on Forest River products that were purchased elsewhere. There may be an occasion that you would be required to return to the point of purchase to satisfy warranty requirements.
- Although many dealerships will eventually service products not purchased at their place of business, they will usually take care of their customers and other Forest River customers who are traveling away from their local dealer as they would their own.
- Local purchases allow a customer to establish a relationship with a dealer close to home. This relationship provides the customer with a convenient location for service and support from a "home town" professional.
- The opportunity for a thorough PDI (Pre Delivery Inspection) and product orientation is an additional benefit of buying from your local dealer. Further providing the opportunity for refresher courses or the ability to get questions answered much more conveniently.
- For our Canadian customers, there are also requirements which must be met to bring an RV purchased out of the country to their home. Although not insurmountable, these requirements may involve such things as additional inspections and certifications, taxes and fees. Your local Canadian Dealer is a professional at meeting these requirements.

Forest River's goal is for all RV Owners to fully enjoy their RV experience. In light of this goal, and considering the advantages of buying local, we encourage you to be thorough when determining what product to purchase and which dealer to purchase it from as both are key to your ultimate satisfaction and the realization of your dreams.

SIERRA AND FOREST RIVER ARE
PROUD TO EXCLUSIVELY OFFER
YOU THESE QUALITY BRANDS:

L A Z B O Y®



YOUR SIERRA DEALER

Forest River, Inc. 55470 CR 1 Elkhart, IN 46515-3030
Phone: 574.533.5934 Fax: 574.533.2965
www.forestriverinc.com www.forestriveraccessories.com

Colton RV & Marine
3122 Niagara Falls Blvd.
North Tonawanda, NY 14120
(716) 694-0188
www.ColtonRV.com

Colton RV
489 Bushkill Plaza LN #9665
Wind Gap, PA 18091
(610) 863-5239
www.ColtonRV.com



All illustrations and specifications contained in this literature are based on the latest product information at time of publication. Forest River reserves the right to make changes in prices, colors, materials, equipment and specifications at anytime without notice and assumes no responsibility for any error in this literature. All units are shipped F.O.B. Goshen, Indiana.

CONSULT YOUR LOCAL DEALER FOR WARRANTY INFORMATION. PIP 041808