

Outback

Designed for a Lifetime of RVing



TERRAIN ULTRA-LITE TRAVEL TRAILERS • SUPER-LITE TRAVEL TRAILERS and FIFTH WHEELS



Outback

Keystone Super-Lite

THE ALL NEW REINVENTED OUTBACK

What do you get when you combine the latest features, the best components and industry leading quality? You get an Outback. Whether you looking for a small trailer for those quick weekend getaways or all the comforts of home for a cross country adventure Outback has something that fits your needs. See why Outback truly is Designed For A Lifetime of RVing!



OUTBACK *Terra-Lite* **TERRAIN**

TOPS IN TOWING. Outback Terrain provides the comfort you need without all the weight. Get the maximum amount of space while minimizing your length in one of the Outback Terrain rear slide models. You will find towing an Outback Terrain is a breeze!



pages 4-8



OUTBACK *Super-Lite* **TRAVEL TRAILERS**

COMFORTABLY CAMPING. Maximum features, maximum storage and maximum comfort. You are going to find Outback Travel Trailers are “best in class” for everything you desire in a travel trailer.



pages 9-14



OUTBACK *Super-Lite* **FIFTH WHEELS**

SIZE MATTERS. All the room, storage and tow ability you expect in a 5th wheel in lengths that are manageable and easy to tow. Perfect for many half ton trucks!



pages 15-18





OUTBACK *Terra-Lite*
TERRAIN



332TS REAR SLIDE BUNK ROOM

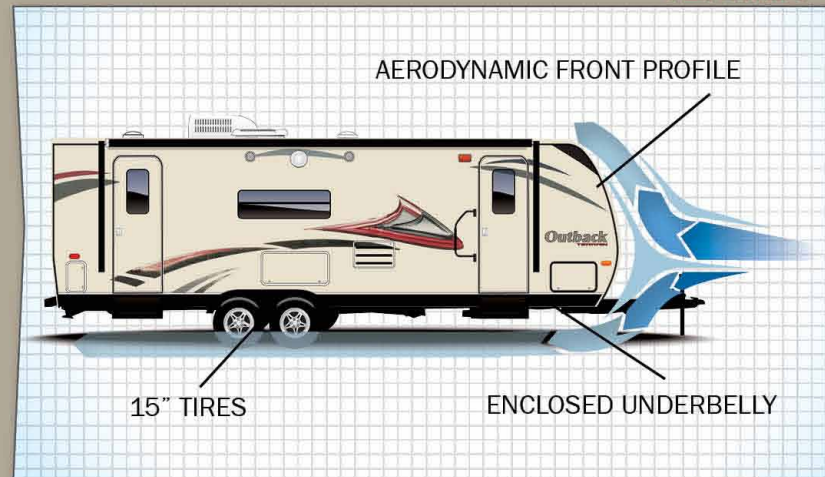
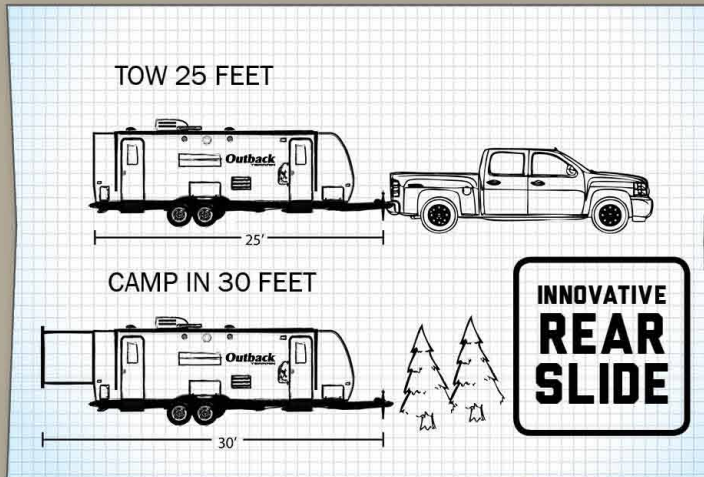


332TS LIVING AREA

OUTBACK TERRAIN TRAVEL TRAILERS



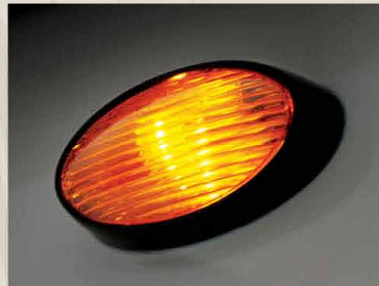
332TS SHOWN IN TEAK DECOR



OUTBACK TERRAIN TOP FEATURES



Vaulted Ceilings adds interior height and increased cabinet space



Activity Lights on both sides provides abundant exterior lighting



Magnetic Door Catches are easy to use and will not break



32" High Definition Televisions are standard in most Outback Terrain models.



Aluminum Rims won't rust or pit and looks sharp!



No crank up Omni HDTV antenna



Enclosed underbelly



Walkable steel truss roof system

OUTBACK TERRAIN TRAVEL TRAILERS



Outback TERRAIN



ROOF

1. Seamless One-Piece EPDM Tan Colored, Rubber Roof
2. Plywood Decking
3. R-14 Blanket Insulation
4. 5" Radius, Galvanized Steel Roof Trusses
5. Full Length Drip Rail

SIDEWALL

6. Gel-Coated Oyster Colored, Fiberglass Exterior
7. 1/8" Luan Wall Backing
8. R-7 Solid Block Foam Insulation
9. 1 1/2" Box Welded Aluminum Frame Walls
10. Interior Decorative Wall Board
11. Diamond Plate on Front Cap

FLOOR

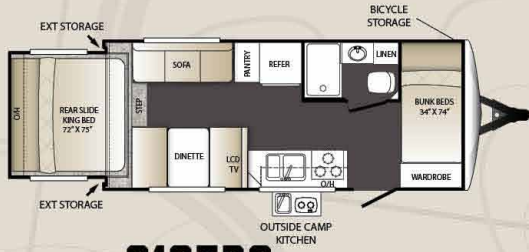
12. Residential Grade Stain Resistant Carpet & Linoleum
13. Carpet Pad
14. Double Layer Luan Decking w/ Staggered Seams
15. R-10 Block Foam Insulation
16. Welded Aluminum Floor Joists
17. Bottom Layer Luan Decking
18. Darco Vapor Barrier Wrap
19. One Piece, Polypropylene Enclosed and Heated Underbelly
20. In Floor Residential Ducted Heat

CHASSIS

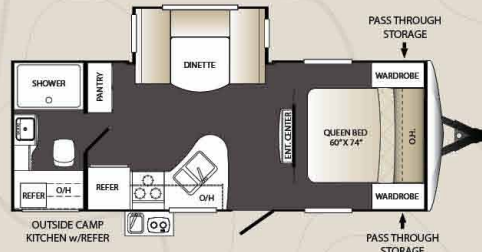
21. 6" Powder Coated Steel I-Beam Frame (8" frame models - 299TBH and larger)
22. Leaf Spring Suspension System
23. EZ Lube Axles with 10" Electric Brakes
24. 15" Radial Tires/Aluminum Rims
25. 3-Step Entry Mounted to I-Beam Frame
26. Step Light

OUTBACK TERRAIN TRAVEL TRAILERS

CONSTRUCTION



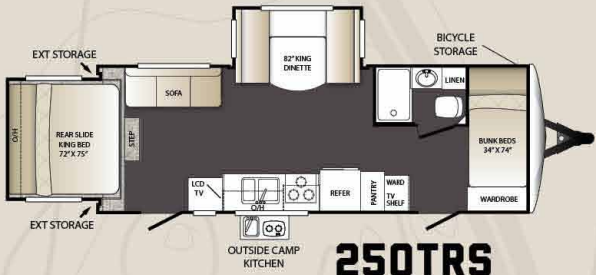
210TRS



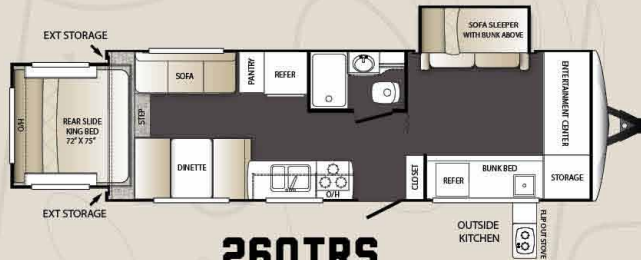
220TRB



230TRS



250TRS



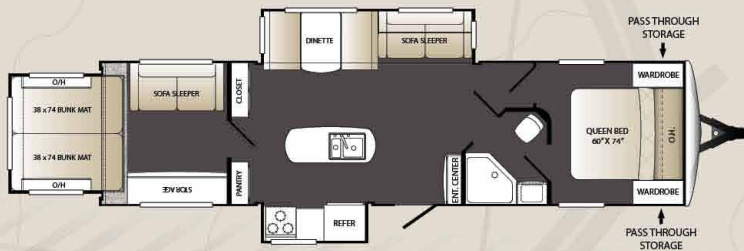
260TRS



273TRL



299TBH



332TRS

SPECIFICATIONS

	210TRS	220TRB	230TRS	250TRS	260TRS	273TRL	299TBH	332TRS
SHIPPING WEIGHT	4635	5180	5075	5500	5905	5758	6343	7095
CARRYING CAPACITY	2365	1820	2425	2000	1895	2042	2157	2105
HITCH WEIGHT	455	610	555	515	895	675	790	745
EXTERIOR LENGTH	22' 10"	26' 0"	27' 0"	27' 6"	29' 3"	30' 0"	32' 6"	36' 0"
EXTERIOR WIDTH	8'	8'	8'	8'	8'	8'	8'	8'
EXT. HEIGHT - A/C TOP	10' 11"	10' 11"	10' 11"	10' 11"	10' 11"	10' 11"	10' 11"	10' 11"
FRESH WATER (GAL.)	43	43	43	43	43	43	43	43
WASTE WATER (GAL.)	30	30	30	30	30	30	30	30
GRAY WATER (GAL.)	30	30	30	30	30	30	60	60
LP CAPACITY (LBS.)	40	40	40	40	40	40	40	40
AWNING	14'	12'	19'	19'	15'	16'	19'	17'

OUTBACK TERRAIN TRAVEL TRAILERS



OUTBACK TERRAIN STANDARDS AND OPTIONS

LIVING AREA

- Deluxe morgan cherry cabinetry
- 36" flush floor slides
- Large panoramic windows
- Pre-drilled and screwed cabinetry
- Custom designed box valance
- Linoleum flooring
- Large wood side drawers with steel guides
- Large overhead cabinets
- 32" HDTV (most models)
- Pleated shades
- Vaulted ceiling
- Decorative glass inserts
- Batten ceiling accents

KITCHEN

- Deep single basin sink with 3" drains
- Two door 6 cu. ft. refrigerator
- High-rise faucet
- 3 burner range with oven
- Microwave
- Upgraded laminate countertops

BEDROOM

- Deluxe innerspring mattress
- TV hook-up
- Jalousie windows for maximum ventilation
- Residential bedspread
- His and her lights
- Bedroom speakers
- 2 Full length wardrobes

BATHROOM

- Power roof vent
- Skylight over tub
- Tub surround
- Garden shower (most models)
- Deluxe medicine cabinet
- Large linen closet (most models)

APPLIANCES

- AM/FM/CD stereo with DVD player, MP3 hookup and bluetooth enabled
- Two door 6 cu. ft. refrigerator
- 3 burner range with oven
- Six gallon gas/electric DSI water heater by pass with 16.2 gallons per hour "quick recovery"
- 13,500 BTU AC wall thermostat

- 30,000 BTU furnace
- Microwave

EXTERIOR STANDARDS

- Oyster colored fiberglass
- Black framed tinted jalousie safety glass windows
- Triple radius entry step
- Black tank flush
- Extra large baggage doors, 1" thick with continuous hinge and rubber D-seal
- Extended drip caps and full length drip rail
- Porch light
- Hitch light
- Weather encapsulated body trim
- Exterior 120V receptacle
- Heated enclosed underbelly including tanks and valves
- LP tank cover
- Automotive style fender skirts
- Double welded dual battery brackets
- Exterior speakers
- Easy lube axles
- Outside camp kitchen (N/A 332TRS)
- Exterior quick connect LP hook-up
- Stabilizer jacks (4)
- Satellite prep
- Magnetic door holders
- Aluminum rims

WALLS - CONSTRUCTION

- Welded aluminum walls with R7 insulation
- Solid block foam insulation

ROOF

- 5" Radius, vaulted galvanized steel, tapered trusses on 16" centers
- One-piece TPO roof (tan)
- R14 blanket insulation

FLOOR

- 2" welded aluminum laminated floor
- R10 block foam insulation
- Wrapped vapor barrier
- Polypropylene enclosed heated underbelly encloses tanks and valves

CHASSIS

- Leaf spring equalizing suspension system
- Powder coated I-beam
- EZ lube axles

- 10" electric brakes
- 15" radial tires
- 15" spare tire, carrier & cover

UTILITIES

- 55-amp converter
- 20 lbs. LP bottles with auto changeover (2)
- Omni Directional TV antenna
- 30-amp shore power line
- LP leak detector
- Smoke detector
- Carbon monoxide detector
- Fire extinguisher
- Tinted safety glass windows
- Break-away switch
- Safety chains
- Manual slide backup on all electric slide outs
- Carbon monoxide detector

TERRAIN EXTERIOR GROUP*

- Oyster colored fiberglass
- Laminated aluminum sidewalls
- Tinted safety glass windows
- Omni TV antenna
- Cable TV/Sat prep
- 15" Radial tires w/spare tire
- Stabilizer jacks
- Black tank flush
- Heavy duty easy lube axles
- Outside camp kitchen (most models)
- Electric awning
- Fully enclosed and heated underbelly
- Exterior speakers
- Patio light

TERRAIN INTERIOR GROUP*

- Vaulted ceiling
- AM/FM/CD/DVD Player - bluetooth enabled
- 3 Burner range with oven
- 32" LCD HDTV (most models)
- Skylight in bath
- Ducted A/C
- Microwave oven
- Pleated shades
- 6 Gal. gas electric DSI water heater with 16.2 quick recovery
- Large double door refrigerator
- Deluxe sleeper sofa

* Denotes STD Build Options

DECOR



HEARTHSTONE



MOONLIGHT



TEAK



SUMMIT





OUTBACK *Super-Lite*
TRAVEL TRAILERS



316RL KITCHEN



**316RL BEDROOM WITH OPTIONAL
REST-N-READ TILT SLEEP SYSTEM**



Outback
Keystone Super-Lite
316RL SHOWN IN SUMMIT DECOR

OUTBACK TRAVEL TRAILER TOP FEATURES

OUTBACK TRAVEL TRAILERS



LED Lights use less energy, offer a softer light and produce little heat.



JT Strong Arm Stabilizer System is standard and greatly reduces trailer movement while in use.



Slam Latch Baggage Doors close tightly every time and are held up by magnetic door catches!



USB Charging Ports are conveniently located in the living area and the bedroom.



Tri-Fold Sleeper Sofas are easy to set up, require no electrical service and provide comfortable nights rest.



Power Tongue Jacks are standard on all Outback trailers and greatly reduce set up time.



The Heated and Enclosed Underbelly extends the camping season and provides better tow ability.



Floor Lights offer safe and convenient night time lighting.



Outside kitchen (300RB, 312BH, 302FBH)



Rear roof ladder



No crank up Omni HDTV antenna



Walkable steel truss roof system





ROOF

1. Seamless One-Piece TPO Tan Colored Roof
2. 3/8" Fully Walkable Wood Decking
3. R-14 Blanket Insulation
4. 5" Radius, Galvanized Steel Roof Trusses
5. Full Length Drip Rail

SIDEWALL

6. Gel-Coated Oyster Colored Fiberglass Exterior
7. 1/8" Luan Wall Backing
8. R-7 Solid Block Foam Insulation
9. 1 1/2" Box Welded Aluminum Frame Walls
10. Interior Decorative Wall Board
11. Gel Coat Molded Fiberglass Front Cap w/ LED lights

FLOOR

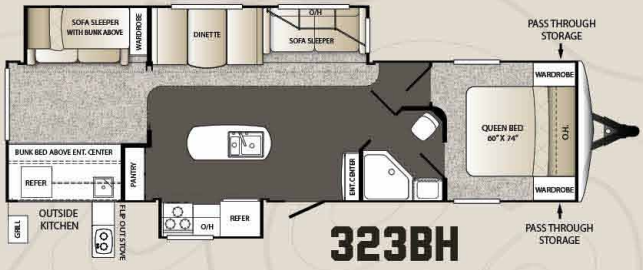
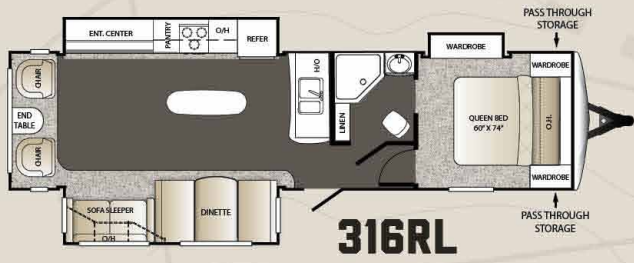
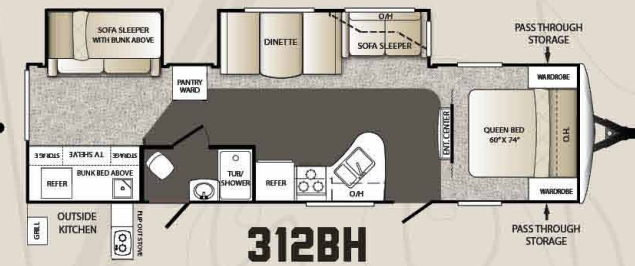
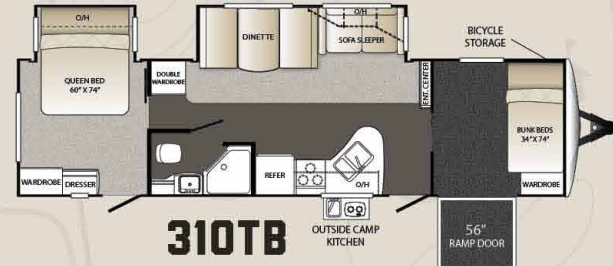
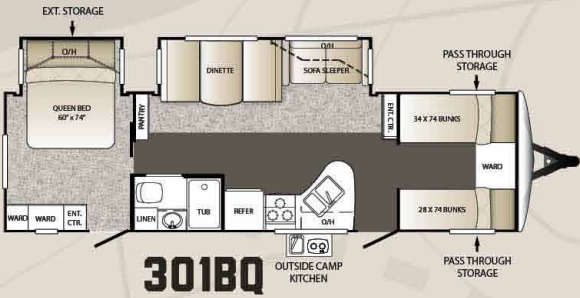
12. Residential Grade Stain Resistant Carpet and Linoleum
13. Carpet Pad
14. Double Layer Luan Decking w/ Staggered Seams
15. R-10 Block Foam Insulation
16. Welded Aluminum Floor Joists
17. Bottom Layer Luan Decking
18. Darco Vapor Barrier Wrap
19. One Piece, Polypropylene Enclosed and Heated Underbelly
20. In Floor Residential Ducted Heat

CHASSIS

21. 8" Powder Coated Steel I-Beam Frame
22. Leaf Spring Suspension System
23. EZ Lube Axles with 10" Electric Brakes
24. 15" Radial Tires
25. 3-Step Entry Mounted to I-Beam Frame
26. Step Light

OUTBACK TRAVEL TRAILERS

CONSTRUCTION



SPECIFICATIONS

	277RL	298RE	300RB	301BQ	310TB	312BH	316RL	323BH
SHIPPING WEIGHT	7320	7605	7560	7000	7170	7505	7560	8190
CARRYING CAPACITY	1680	1395	1577	2000	1830	1495	1440	1310
HITCH WEIGHT	870	925	1115	790	810	920	980	975
EXTERIOR LENGTH	34' 10"	35' 2"	33' 8"	33' 6"	35' 6"	35' 5"	35' 6"	36'
EXTERIOR WIDTH	8'	8'	8'	8'	8'	8'	8'	8'
EXT. HEIGHT - A/C TOP	10' 11"	10' 11"	10' 11"	10' 11"	10' 11"	10' 11"	10' 11"	10' 11"
FRESH WATER (GAL.)	53	53	53	53	53	53	53	53
WASTE WATER (GAL.)	34	34	34	34	34	34	34	34
GRAY WATER (GAL.)	68	68	68	68	68	68	34	68
LP CAPACITY (LBS.)	60	60	60	60	60	60	60	60
AWNING	19'	18'	19'	19'	16'	18'	12'	18'



OUTBACK TRAVEL TRAILER STANDARDS AND OPTIONS

LIVING AREA

- Upgraded furniture package
- Outback command center
- Deluxe morgan cherry cabinetry
- Lounge dinette
- 36" flush floor slides
- Large panoramic windows
- Pre-drilled and screwed cabinetry
- Custom designed box valance with soft curtains
- Linoleum flooring
- Large wood side drawers with steel guides
- Water soil, stain resistant fabrics
- Large overhead cabinets
- Residential tri-fold sleeper sofa
- 32" HDTV*
- 40" HDTV (277, 298, 300, 312, 316 & 323 only)
- Pleated shades*
- Decorative wall lights*
- Vaulted ceiling
- Floor lights (2)
- USB charging port
- LED lighting
- Batten ceiling accent

KITCHEN

- Deep double basin sink with 3" drains
- Trash can storage*
- Two door 6 cu. ft. refrigerator (most models)
- High-rise faucet*
- Utensil tray
- 3 burner range with oven*
- Microwave
- Upgraded laminate countertops
- Paper towel holder

BEDROOM

- Deluxe innerspring mattress
- TV hook-up
- Jalousie windows for maximum ventilation
- Residential bedspread
- Deluxe headboard
- His and her lights
- Bedroom speakers
- 2 Full length wardrobes
- Recessed cubby storage w/ 110 volt outlets (most models)

BATHROOM

- Power roof vent
- Skylight over tub
- Porcelain foot flush toilet
- Tub surround*
- Garden shower (N/A 301 & 312)
- Deluxe medicine cabinet
- Large linen closet (most models)

APPLIANCES

- AM/FM/CD stereo with DVD player and MP3 hookup w/ Bluetooth
- Two door 6 cu. ft. refrigerator (8 cu. ft. in 316, 323 & fifth wheels only)
- 3 burner range with oven*
- Six gallon gas/electric DSI water heater by pass with 16.2 gallons per hour "quick recovery"*
- 13,500 BTU AC wall thermostat
- 30,000 BTU furnace
- Microwave

EXTERIOR STANDARDS

- Molded fiberglass front cap w/ LED strip lights
- Black framed tinted jalousie safety glass windows
- Black tank flush
- Assist entry grab handle
- Extended drip caps and full length drip rail
- Two security lights (one on each side)*
- Porch light
- Hitch light
- Step light
- Weather encapsulated body trim
- Exterior 120V receptacle
- Heated enclosed underbelly including tanks and valves
- LP tank cover
- Automotive style fender skirts
- Double welded dual battery brackets
- Exterior speakers
- Easy lube axles
- Outside camp kitchen (most models)*
- Exterior quick connect LP hook-up
- Stabilizer Jacks (4)
- LED Hitch lights
- Satellite prep
- Slam latch baggage doors w/ magnetic door holders
- Rear ladder
- Power tongue jack
- JT strong arm jack stabilizers
- Black slide out endwalls
- Oyster colored sidewalls

WALLS - CONSTRUCTION

- Welded aluminum walls with R7 insulation
- Solid block foam insulation

ROOF

- 5" Radius, vaulted galvanized steel, tapered trusses on 16" centers
- 3/8" roof decking
- One-piece TPO roof (tan)
- R14 blanket insulation

FLOOR

- 2" welded aluminum laminated floor
- R10 block foam insulation
- Wrapped vapor barrier
- Polypropylene enclosed heated underbelly encloses tanks and valves

CHASSIS

- Leaf spring equalizing suspension system
- Powder coated I-beam
- 10" - electric brakes
- 15" radial tires*
- 15" spare tire, carrier & cover*
- Aluminum rims*

UTILITIES

- 55-amp converter
- 30 lbs. LP bottles with auto changeover
- Omni directional hands-free TV/ Radio antenna
- 30-amp shore power line*
- LP leak detector
- Smoke detector
- Carbon monoxide detector*
- Fire extinguisher
- Tinted safety glass windows
- Break-away switch
- Safety chains
- Manual slide backup on all electric slide outs
- 12 Volt battery disconnect
- Designer Package
- Comfort Package
- Carbon monoxide detector
- Outside camp kitchen
- RVIA
- Radial Tires
- 15" spare tire, carrier, and cover
- Airless tri-fold sofa sleeper
- Aluminum rims
- 50 amp service, wired and braced for second A/C
- Fireplace (298, 316 & fifth wheels only)

OUTBACK DESIGNER PACKAGE*

- Wall border
- Cloth shower curtain (most models)
- Oil rubbed bronze coat hooks (most models)
- Utensil rack
- Innerspring mattress
- Bedspread
- LP cover
- Raised panel refrigerator
- Pleated shades
- Decorative wall lights
- Trash can

OUTBACK COMFORT PACKAGE*

- 13,500 BTU ducted air conditioner
- TV antenna/cable
- AM/FM/CD stereo with bluetooth
- Microwave
- Entry handle
- High low dinette (most models)

POPULAR OPTIONS

- Free-standing dinette (277, 298, 300, 310, 316)
- 50 AMP Service (standard on 298, 316, 323)
- Second Air Conditioner
- 15,000 BTU Air Conditioner

OUTBACK DIAMOND PACKAGE (OPTIONAL)

- Champagne medallion high gloss exterior fiberglass
- Fantastic fan
- Frameless windows
- Metal wrap awning w/ LED lights
- Wood blinds
- Theater seating (298 & fifth wheels only)
- Solid surface countertops w/ pullout faucet
- Outback Rest-n-Read tilt sleep system

* Denotes STD Build Options



DECOR



HEARTHSTONE



MOONLIGHT



TEAK



SUMMIT



**OUTBACK Super-Lite
FIFTH WHEELS**



286FRL KITCHEN



296FRL BEDROOM WITH QUEEN SIZE BED

OUTBACK FIFTH WHEELS



296FRS SHOWN IN TEAK DECOR

OUTBACK FIFTH WHEEL TOP FEATURES



Vaulted Ceilings and front profile increase head room to 6' 10" at the end of the bed!



JT Strong Arm Stabilizer System is standard and greatly reduces trailer movement while in use.



Large Pass Through Storage compartments utilize Slam Latch Baggage Doors for easy access to all of your belongings.



USB Charging Ports are conveniently located in the living area and the bedroom.



Tri-Fold Sleeper Sofas are easy to set up, require no electrical service and provide comfortable nights rest.



The Utility Center contains most of your unit controls in one easily accessible location



The Heated and Enclosed Underbelly extends the camping season and provides better tow ability.



Outback utilizes an aerodynamic front cap that provides a maximum amount of turning radius



LED Lights use less energy, offer a softer light and produce little heat.



Rear roof ladder



No crank up Omni HDTV antenna



Walkable steel truss roof system





Outback
Keystone Super-Lite

ROOF

1. Seamless One-Piece EPDM Rubber Roof
2. 3/8" Fully Walkable Wood Decking*
3. Astro-foil insulation
4. 5" Radius Galvanized Steel Roof Trusses
5. 1/8" Vinyl Protected Ceiling Panel

SIDEWALL

6. Metal Backing EGG Strips
7. Aerodynamic Radius High Gloss Front Fiberglass Cap w/ Hitch Vision
8. R-9 Fiberglass Insulation End Walls
9. 2" Box Welded Aluminum Side and End Walls
10. Corner Radius Window Inserts
11. R-9 Solid Block Foam Insulation
12. 1/8" Luan Wood Backing
13. Gel Coated Fiberglass Exterior

FLOOR

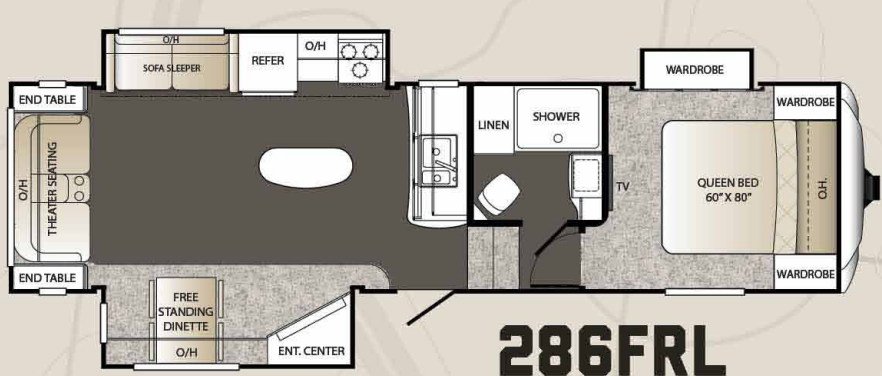
14. High Density Residential Carpet w/ Stain Resistance
15. Residential Grade Linoleum
16. One Piece Seamless Floor Decking*
17. Residential In Floor Ducted Heat
18. Hi-Density Block Foam Insulation
19. 3" Welded Box Frame Aluminum Floor Joists, 13" on Center*
20. Darco Wrap Vapor Barrier

CHASSIS

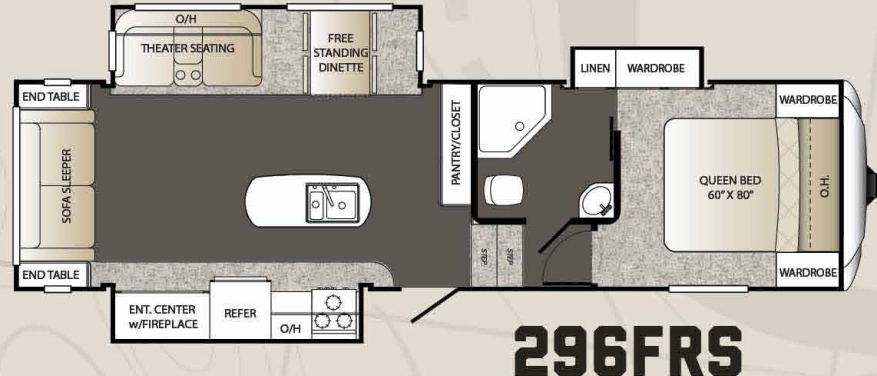
21. 8" to 10" "Powder Coated" Steel I-beam Frame
22. One Piece, Polypropylene Enclosed and Heated Underbelly
23. 16" Radial Tires with 12" Electric Brakes (N/A Sydney Super-Lite)
24. EZ Lube Axles
25. Leaf Spring Suspension System
26. Entry Step Light

OUTBACK FIFTH WHEELS

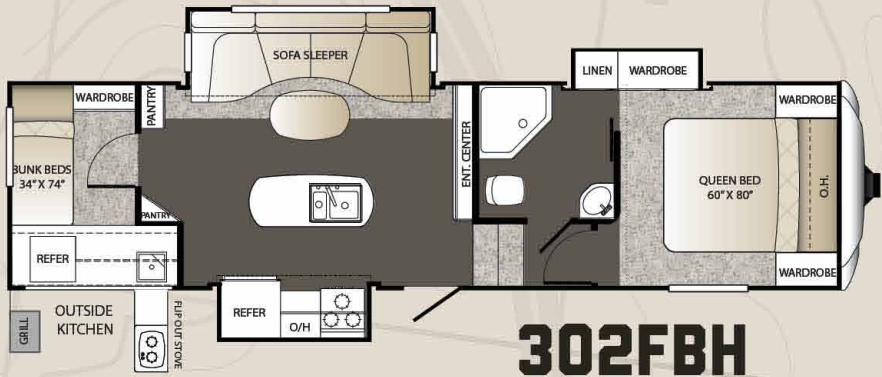
CONSTRUCTION



286FRL



296FRS



302FBH



315FRE

SPECIFICATIONS

	286FRL	296FRS	302FBH	315FRE
SHIPPING WEIGHT	8435	8545	TBD	8770
CARRYING CAPACITY	2030	1955	TBD	1730
HITCH WEIGHT	1650	1715	TBD	1745
EXTERIOR LENGTH	32' 6"	32' 6"	TBD	33' 0"
EXTERIOR WIDTH	8'	8'	TBD	8'
EXT. HEIGHT - A/C TOP	13' 1"	13' 1"	TBD	13' 1"
FRESH WATER (GAL.)	53	53	TBD	53
WASTE WATER (GAL.)	34	34	TBD	34
GRAY WATER (GAL.)	34	68	TBD	68
LP CAPACITY (LBS.)	60	60	TBD	60
AWNING	15'	15'	TBD	15'

OUTBACK FIFTH WHEELS



OUTBACK FIFTH WHEEL STANDARDS AND OPTIONS

LIVING AREA

- Upgraded furniture package
- Outback command center
- Deluxe morgan cherry cabinetry
- Lounge dinette
- 36" flush floor slides
- Large panoramic windows
- Pre-drilled and screwed cabinetry
- Custom designed box valance with soft curtains
- Linoleum flooring
- Large wood side drawers with steel guides
- Water soil, stain resistant fabrics
- Large overhead cabinets
- Residential tri-fold sleeper sofa
- 32" HDTV*
- 40" HDTV (277, 298, 300, 312, 316 & 323 only)
- Pleated shades*
- Decorative wall lights*
- Vaulted ceiling
- Floor lights (2)
- USB charging port
- LED lighting
- Batten ceiling accent

KITCHEN

- Deep double basin sink with 3" drains
- Trash can storage*
- Two door 6 cu. ft. refrigerator (most models)
- High-rise faucet*
- Utensil tray
- 3 burner range with oven*
- Microwave
- Upgraded laminate countertops
- Paper towel holder

BEDROOM

- Deluxe innerspring mattress
- TV hook-up
- Jalousie windows for maximum ventilation
- Residential bedspread
- Deluxe headboard
- His and her lights
- Bedroom speakers
- 2 Full length wardrobes
- Recessed cubby storage w/110 volt outlets (most models)

BATHROOM

- Power roof vent
- Skylight over tub
- Porcelain foot flush toilet
- Tub surround*
- Garden shower (N/A 301 & 312)
- Deluxe medicine cabinet
- Large linen closet (most models)

APPLIANCES

- AM/FM/CD stereo with DVD player and MP3 hookup w/Bluetooth
- Two door 6 cu. ft. refrigerator (8 cu. ft. in 316, 323 & fifth wheels only)
- 3 burner range with oven*
- Six gallon gas/electric DSI water heater by pass with 16.2 gallons per hour "quick recovery"*
- 13,500 BTU AC wall thermostat
- 30,000 BTU furnace
- Microwave

EXTERIOR STANDARDS

- Molded fiberglass front cap w/LED strip lights
- Black framed tinted jalousie safety glass windows
- Black tank flush
- Assist entry grab handle
- Extended drip caps and full length drip rail
- Two security lights (one on each side)*
- Porch light
- Hitch light
- Step light
- Weather encapsulated body trim
- Exterior 120V receptacle
- Heated enclosed underbelly including tanks and valves
- LP tank cover
- Automotive style fender skirts
- Double welded dual battery brackets
- Exterior speakers
- Easy lube axles
- Outside camp kitchen (most models)*
- Exterior quick connect LP hook-up
- Stabilizer Jacks (4)
- LED Hitch lights
- Satellite prep
- Slam latch baggage doors w/magnetic door holders
- Rear ladder
- Power tongue jack
- JT strong arm jack stabilizers
- Black slide out endwalls
- Oyster colored sidewalls

WALLS - CONSTRUCTION

- Welded aluminum walls with R7 insulation
- Solid block foam insulation

ROOF

- 5" Radius, vaulted galvanized steel, tapered trusses on 16" centers
- 3/8" roof decking
- One-piece TPO roof (tan)
- R14 blanket insulation

FLOOR

- 2" welded aluminum laminated floor
- R10 block foam insulation
- Wrapped vapor barrier
- Polypropylene enclosed heated underbelly encloses tanks and valves

CHASSIS

- Leaf spring equalizing suspension system
- Powder coated I-beam
- 10"- electric brakes
- 15" radial tires*
- 15" spare tire, carrier & cover*
- Aluminum rims*

UTILITIES

- 55-amp converter
- 30 lbs. LP bottles with auto changeover
- Omni directional hands-free TV/Radio antenna
- LP leak detector
- Smoke detector
- Carbon monoxide detector*
- Fire extinguisher
- Tinted safety glass windows
- Break-away switch
- Safety chains
- Manual slide backup on all electric slide outs
- 12 Volt battery disconnect
- Designer Package
- Comfort Package
- Carbon monoxide detector
- Outside camp kitchen
- RVIA
- Radial Tires
- 15" spare tire, carrier, and cover
- Airless tri-fold sofa sleeper
- Aluminum rims
- 50 amp service, wired and braced for second A/C
- Fireplace (298, 316 & fifth wheels only)

OUTBACK DESIGNER PACKAGE*

- Wall border
- Cloth shower curtain (most models)
- Oil rubbed bronze coat hooks (most models)
- Utensil rack
- Innerspring mattress
- Bedspread
- LP cover
- Raised panel refrigerator
- Pleated shades
- Decorative wall lights
- Trash can

OUTBACK COMFORT PACKAGE*

- 13,500 BTU ducted air conditioner
- TV antenna/cable
- AM/FM/CD stereo with bluetooth
- Microwave
- Entry handle
- High low dinette (most models)

POPULAR OPTIONS

- Second Air Conditioner
- 15,000 BTU Air Conditioner

OUTBACK DIAMOND PACKAGE (OPTIONAL)

- Champagne medallion high gloss exterior fiberglass
- Fantastic fan
- Frameless windows
- Metal wrap awning w/LED lights
- Wood blinds
- Theater seating (298 & fifth wheels only)
- Solid surface countertops w/pullout faucet
- Outback Rest-n-Read tilt sleep system

* Denotes STD Build Options



DECOR



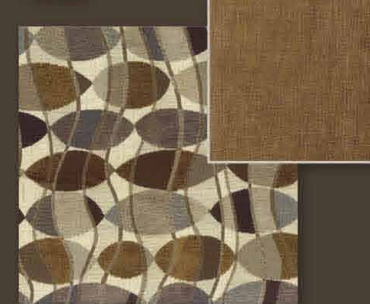
HEARTHSTONE



MOONLIGHT



TEAK



SUMMIT

OUTBACK FIFTH WHEELS



www.keystonerv.com/Outback



MAKE IT A DIAMOND

OUTBACK TRAVEL TRAILERS AND FIFTH WHEELS ARE AVAILABLE WITH THE OPTIONAL DIAMOND PACKAGE (N/A ON OUTBACK TERRAIN)



- 1. Champagne Medallion High Gloss Exterior
- 2. Fantastic Fan
- 3. Frameless Windows

- 4. Metal Wrap Awning with LED Lights
- 5. Wood Blinds
- 6. Theater Seating (296FRS and 298RE only)

- 7. Solid Surface Countertops with Pull-Out Faucet
- 8. Outback Rest-N-Read Tilt Sleep System



www.keystonerv.com/outback-terrain

www.keystonerv.com/outback

Outback

Designed for a Lifetime of RVing



Member
RVIA
RECREATION VEHICLE
INDUSTRY ASSOCIATION

Go RVing
Life's A Trip™

YOUR LOCAL OUTBACK DEALER:

Colton RV
North Tonawanda, NY 14120
(716) 694-0188
(800) 628-4889
www.ColtonRV.com

Colton RV
Orchard Park, NY 14127
(716) 957-3250
(800) 628-4889
www.Coltonrv.com

2642 Hackberry Drive
PO Box 2000
Goshen, IN 46527-2000
(574) 535-2100



www.keystonerv.com

Product information is as accurate as possible at the date of publication of this brochure. Features, floor plans, and specifications are subject to change without notice. Please also consult Keystone's web site at keystonerv.com for more current product information and specifications. Tow Vehicle Disclaimer. CAUTION: Owners of Keystone recreational vehicles are solely responsible for the selection and proper use of tow vehicles. All customers should consult with a motor vehicle manufacturer or their dealer concerning the purchase and use of suitable tow vehicles for Keystone products. Keystone disclaims any liability or damages suffered as a result of the selection, operation, use or misuse of a tow vehicle. KEYSTONE'S LIMITED WARRANTY DOES NOT COVER DAMAGE TO THE RECREATIONAL VEHICLE OR THE TOW VEHICLE AS A RESULT OF THE SELECTION, OPERATION, USE OR MISUSE OF THE TOW VEHICLE. 12/2013