

2011 **Journey** | **Journey**  
*EXPRESS*



Journey Express  
TAUPE PEARL  
FULL-BODY PAINT



**Journey or Journey?**  
*EXPRESS*

Which is right for you? Details on **page 8**

On the cover: **JOURNEY 40L** Walnut Grove  
**JOURNEY EXPRESS 34Y** Taupe Pearl

**JOURNEY 40U** Hawthorne with Forest Cherry



# 2011 Journey 2011 Journey Express

The Journey® and Journey Express are two distinct diesel pusher offerings with significantly different price levels. The Journey Express is a complete upscale coach that costs thousands less than the Journey, which boasts several luxury upgrades and is built on the extraordinary

Maxum® chassis. This breakthrough chassis delivers an impressive ride, handling and an incredible amount of exterior storage. When you're ready for diesel pusher comfort and performance, the choice is yours: The 2011 Winnebago Journey or Journey Express.

## Life is Good

Luxury living starts with a with a 40" LCD TV (32" in the Journey Express 34Y) and a home theater sound system with a DVD player and HD video selection system. For even more entertainment options, choose the "Your HD"-compatible satellite receiver (requires the available King-Dome® in-motion or automatic satellite system) and you'll have the ability to turn your DISH Network® service on and off as you desire—an RVer's dream come true. The available electric fireplace in the Journey 40L and 40U makes the living area extra cozy. Take it all in from the Comfort Sofa Sleeper in the 40L or the Euro Chair and Rest Easy® Extendable Sectional Sofa in the 40U that expands to fit the entire family.

Upscale interior styling delivers a warm, inviting feel with high-end features such as easy-to-clean Duraceramic tile flooring in the Journey (shown) and vinyl tile flooring in the Journey Express. Accent rope lighting provides additional interior ambiance while tinted, dual-glazed windows provide added thermal efficiency. MCD American Duo® solar/blackout roller shades open and close with a simple touch to let you screen the sun or maximize your privacy.



JOURNEY 40U Hawthorne with Forest Cherry

**Comfort Sofa Sleeper** This sofa in the 40L easily folds out into a bed with a self-inflating mattress.



1) By day it's a plush sofa.



2) A hidden drawer stores bed linens.



3) It converts easily into a bed.



4) The mattress inflates and deflates with an automatic pump.



**Recognized Quality** The Recreation Vehicle Dealer Association bestows its annual Quality Circle Award to the manufacturers that provide exceptional products, service and support. Only one manufacturer has received this honor for fifteen consecutive years: Winnebago Industries.®

Visit us for the latest updates and expanded key feature content at:

[GoWinnebago.com](http://GoWinnebago.com)

## Make Dinner Special

Prepare fabulous meals in an elegant setting. Corian® solid-surface countertops provide a large work surface that can be expanded with the pullout extension in the Journey. All models include a three-burner range. The microwave/convection oven comes standard in the Journey and is available in the Journey Express. An oven is also available for even greater cooking flexibility.

A four-door refrigerator/freezer with icemaker is standard. Journey owners looking to take their kitchen to the next level can upgrade to the Maytag® residential french door stainless steel refrigerator. The easy-glide freezer drawer and ice/water dispenser provide at-home comfort. Enjoy a quick snack or a complete feast as you sit at the versatile BenchMark® full comfort dinette (NA 40U). A table extension and two additional chairs are available for the BenchMark dinette in the Journey Express and Journey 40L.



JOURNEY EXPRESS 39N Castleton with Honey Cherry



**French Door Refrigerator** The 110-volt residential french door refrigerator and pullout freezer drawer with an ice and water dispenser is available in the Journey. It includes an upgrade to a 2,800-watt inverter and two additional house batteries.



**Full-Extension Drawers** Drawers are sized to maximize storage and open wide on full-extension slides for easy access.



**Dinette** The BenchMark full comfort dinette (NA 40U) has seats with innerspring construction for added comfort. They flip up for easy access to storage and the dinette quickly converts into a bed.



## Take Comfort

The spacious bedroom features a queen bed or an available king bed. A powered bed is available in the Journey Express 39N. Upgrade to the Ideal Rest® Digital Comfort Control mattress and you can easily adjust to the firmness you desire. Watch the news on the LCD HDTV or listen to music on the available stereo system with CD/DVD player, iPod/MP3 input and alarm clock. A large wardrobe and chest of drawers provide ample storage while the 36" x 36" Big Shower in the Journey 40U will make you feel right at home.



**JOURNEY 40U** Hawthorne with Forest Cherry



**Storage** A large dresser provides ample storage for a complete wardrobe.



**Washer/Dryer** You'll appreciate the ability to do laundry on the road when you add the stacked washer and dryer on the Journey or washer/dryer combo on the Journey Express.

## High-Tech Travel

Driving is just more fun with advanced features such as the TRW® tilt/telescopic steering column. The RV Radio® with iPod/MP3 input and weather band is standard and features a 6.5" LCD monitor that also displays the rearview and sideview color camera images. Choose the in-dash GPS navigation system for a 7" touch screen radio and a second dash monitor that can be viewed from the passenger seat. You can enhance your listening options by adding the Sirius® satellite radio system. It includes an iPod interface connector, docking port and a complimentary six-month subscription.



**Cab Seats** UltraLeather cab seats with six-way power pedestals and a passenger foot rest come standard in the Journey and are available in the Journey Express.



## Your Vacation Starts Now

With the Journey and Journey Express, you are ready to relax from almost the minute you park. A complete service center houses all of your primary connection points so hookups take almost no time at all. All models include the QuickPort® service connection hatch that allows bay doors to close with hoses and shoreline still connected. The Journey adds the convenience of the QuickConnect® coupling valve for hassle-free dump valve connections.

Avoid tripped campground circuit breakers, thanks to the PowerLine® energy management system that monitors 110-volt power usage and cycles appliances on and off as necessary.



**OnePlace** Frequently used switches, gauges and controls are all placed on this centrally located panel.



**Slideout Tray** A spacious 90" slideout tray is available on the Journey 40L and 40U. It can be pulled out on either side of the coach for easy access.



**Exterior Service Center** Color-coded labels make hookups a snap.

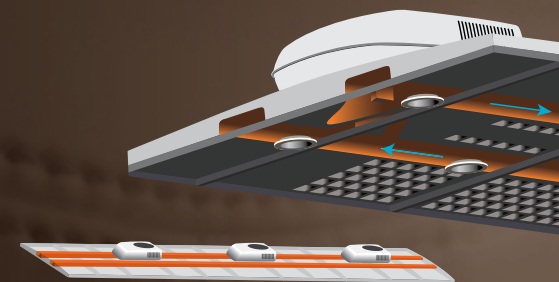


**Sideview Cameras** Sideview cameras activate with the turn signal to aid with navigation.

## Set Your Coordinates to Maximum Comfort

For years, TrueAir® set the standard in RV air conditioning. This year, we're raising the bar with the TrueAir Maximum Comfort A/C. It's the best TrueAir system yet, employing next-generation technology to provide unparalleled climate control and comfort:

- Three high-efficiency, low-profile roof-mount cooling units deliver unsurpassed cooling power (two units on Journey Express 34Y)
- D-shaped formed ductwork optimizes airflow
- Dual-zone thermostat offers precision cooling
- Infinitely adjustable ceiling vents provide finite control



**Entertainment Center** The available exterior entertainment center features a 32" LCD HDTV, DVD player and stereo and is positioned above the belt line for optimal viewing.



**TrueLevel** Sonar technology measures holding tank levels without probes that clog or corrode so you can enjoy accurate readings every time.



**QuickConnect** The QuickConnect coupling valve ensures quick, clean sewer hookups every time (Journey 40L, 40U).

For complete details on the new TrueAir Maximum Comfort A/C, visit the key features section at [GoWinnebago.com](http://GoWinnebago.com).

# Which Coach is Right for You?

Use the comparison chart to see which is the perfect diesel coach for you: the Journey or Journey Express.

Chassis Features	Journey Express (34Y, 39N)		Journey (40L, 40U)	
	Standard	Optional	Standard	Optional
<b>Freightliner XCS Chassis</b>				
340-hp Cummins ISB 6.7L Turbo-Charged Diesel Engine	■			
Allison 2500 MH 6-speed Automatic Transmission	■			
Stainless Steel Wheel Liners	■			
<b>Maxum Freightliner Chassis</b>				
360-hp Cummins ISC 8.3L Turbo-Charged Diesel Engine (380-hp Cummins ISC Diesel Engine Equipped With 2010 EPA Emissions - Fall 2010 Production)			■	
Allison 3000 MH 6-speed Automatic Transmission			■	
Stylized Aluminum Wheels			■	
<b>Exterior Features</b>	Standard	Optional	Standard	Optional
Slideout Compartment Tray				■
Storage Containers (4)			■	
Folding Step Ladder				■
Full-Width Mud Guard			■	
Black Mirror Head	■			
Chrome Mirror Head w/Amber Turn Signal Lamp Mounted To Mirror Arm			■	
Sewer Hose w/QuickConnect Coupling Valve			■	
<b>Interior Features</b>				
Armrests (2) Hinged	■			
Armrests (2) Multi-position			■	
Lumbar Support - Fixed	■			
Lumbar Support - Adjustable			■	
Passenger Seat w/Footrest		■	■	
Driver Seat w/6-Way Power		■	■	
Passenger Seat w/6-Way Power				■
Wrapped Wood Cabinet Faces: Galley, Lounge, Dining	■			
Solid Wood Cabinet Faces: Galley, Lounge, Dining			■	
Comfort Sofa Sleeper - 40L			■	
RestEasy Extendable Sectional Sofa - 40U			■	
Electric Fireplace				■
Pull-out Galley Extension w/Solid Surface Countertop			■	
Microwave Oven	■			
Microwave/Convection Oven w/Vented Range Fan		■	■	
Stainless Steel Residential Maytag French Door Refrigerator w/Water/Ice Dispenser and Bottom Drawer Freezer				■
Bath Decorative Backsplash			■	
Laminate Countertop - Bath	■			
Solid Surface Countertop - Bath			■	
Decorative Wall Border - Bath	■			
Ceiling Fan - Bedroom				■
Vinyl Tile Floor	■			
Duraceramic Tile Floor			■	
Hardwood Wainscoting w/Chair Rail			■	
Stacked Washer/Dryer				■
Combo Washer/Dryer		■		
Furnace - Single 40,000 BTU	■			
Furnace - Dual 35,000 BTU Front, 20,000 BTU Rear			■	
Filtered Water Separate Galley Cold Water Faucet			■	
House Batteries - 2 Marine Group 31	■			
House Batteries - 4 Marine Group 31			■	
1,000-Watt Inverter	■			
2,000-Watt Inverter			■	

## MAXUM CHASSIS



Journey  
40L, 40U

## Maxum® Freightliner® XCL Chassis

- 32,350-lb. GVWR
- Cummins ISC 8.3L diesel engine
- 360-hp (Fall 2010 production: 2010 EPA emissions-equipped 380-hp Cummins ISC)
- Touch pad shifter
- 55° wheel cut
- Allison® 3000 MH Series 6-speed transmission
- Neway® air suspension
- 10,000-lb. hitch<sup>6</sup>
- TRW® tilt/telescopic steering column
- Lowered-rail construction

Winnebago Industries engineers worked closely with Freightliner to develop the Maxum chassis. Its innovative lowered-rail design delivers a stronger platform, lower center of gravity, superior ride and handling, and extremely impressive exterior storage—up to 246 cubic feet.



THE LEADER AT EVERY TURN™



Journey Express  
34Y, 39N

## Freightliner XCS Chassis

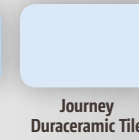
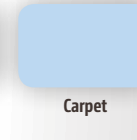
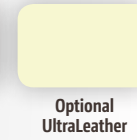
- 27,910-lb. GVWR
- Cummins ISB 6.7L diesel engine
- 340-hp
- Touch pad shifter
- 55° wheel cut
- Allison 2500 MH Series 6-speed transmission
- NeWay air suspension
- 10,000-lb. hitch<sup>6</sup>
- TWR tilt/telescopic steering column

The Freightliner XCS chassis was designed and built exclusively for this application with the smooth ride and performance you demand. The Freightliner service network is second to none with over 400 locations in the U.S. and Canada, many open 24/7.

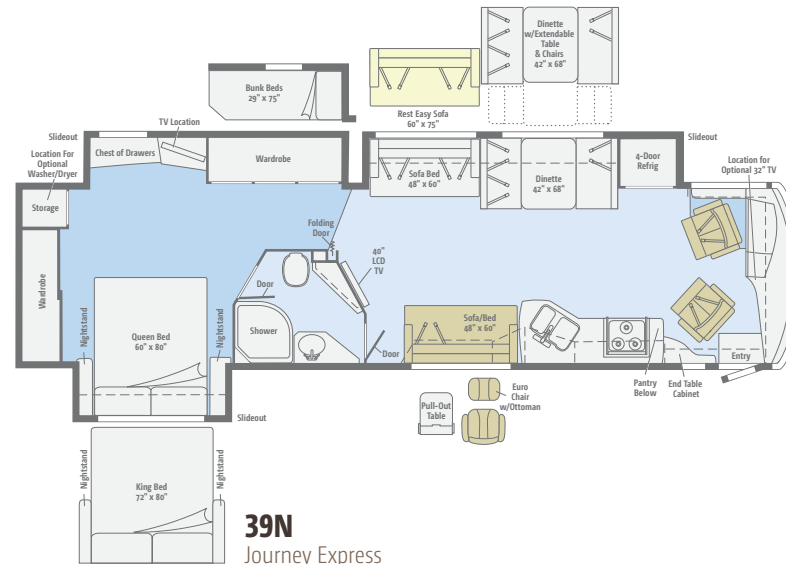


# Floorplans & Specifications

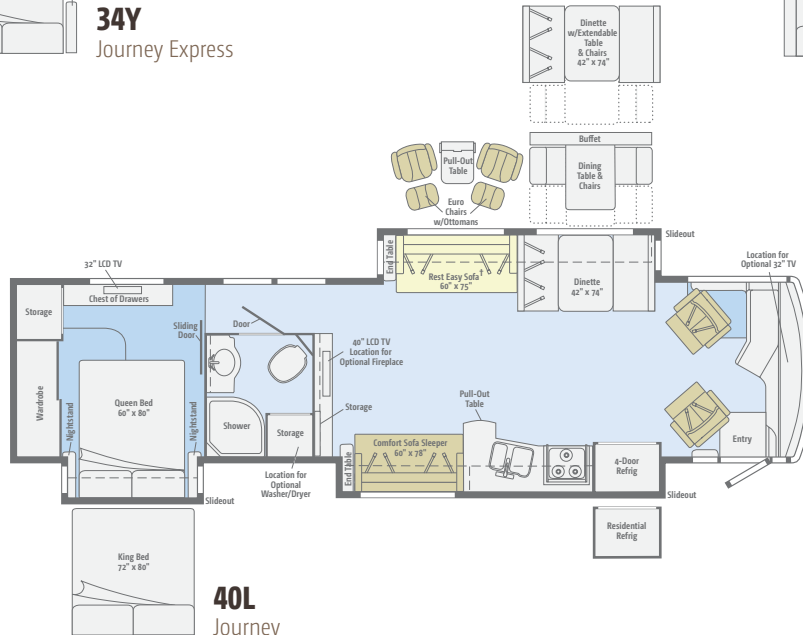
Dimensions shown are for sleeping space only and may vary due to styling differences. Dashed lines denote overhead storage areas. Floorplans and specifications are also available online at [GoWinnebago.com](http://GoWinnebago.com).



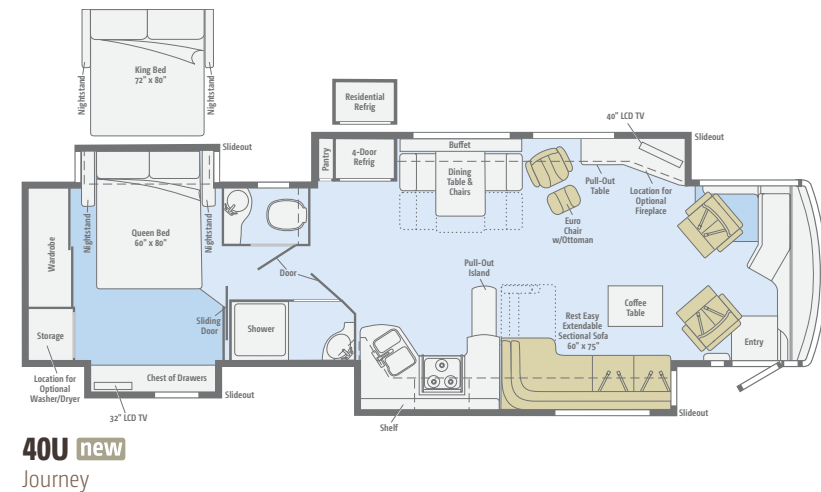
**34Y**  
Journey Express



**39N**  
Journey Express



**40L**  
Journey



**40U new**  
Journey

† Available with single or dual controls. Dual-control option includes only two seat belts.



**Take a Tour** We're proud of our processes, state-of-the-art facilities and the people who make Winnebago Industries number one. We invite you to visit our complex in Forest City, Iowa, for a first-hand look at the dedication and technology behind every motor home we build.

Visit us for the latest updates and expanded key feature content at:

[GoWinnebago.com](http://GoWinnebago.com)

## Weights & Measures

	Journey Express		Journey	
	34Y	39N	40L	40U
<b>Length</b>	35'	39'11"	40'8"	40'8"
<b>Exterior Height<sup>1</sup></b>	12'7"	12'8"	12'10"	12'10"
<b>Exterior Width<sup>2</sup></b>	8'5.5"	8'5.5"	8'5.5"	8'5.5"
<b>Exterior Storage<sup>3*</sup></b> (cu. ft.)	126.7	165.7	211.4	246.5
<b>Awning Length</b>	16'	19'6"	14'6"	14'6"
<b>Interior Height</b>	7'	7'	7'	7'
<b>Interior Width</b>	8'0.5"	8'0.5"	8'0.5"	8'0.5"
<b>Freshwater Capacity w/Heater<sup>4</sup></b> (gal.)	92	92	92	92
<b>Holding Tank Capacity - Black/Gray<sup>4</sup></b> (gal.)	57/81	52/79	51/91	64/62
<b>LP Capacity<sup>5</sup></b> (gal.)	28	28	28	28
<b>Fuel Capacity</b> (gal.)	90	90	100	100
<b>GCWR<sup>6</sup></b> (lbs.)	33,000	33,000	42,350	42,350
<b>GVWR</b> (lbs.)	27,910	27,910	32,350	32,350
<b>GAWR - Front</b> (lbs.)	10,410	10,410	12,350	12,350
<b>GAWR - Rear</b> (lbs.)	17,500	17,500	20,000	20,000
<b>Wheelbase</b>	208"	267"	276"	276"

# No Shortcuts – No Compromises

You can compare features. You can compare styles. But when it comes to quality construction, there is no comparison. Only motor homes manufactured by Winnebago Industries harness the legendary strength and durability of our SuperStructure® construction process—a process we've been perfecting for more than 50 years.

SuperStructure means a solid framework, steel and aluminum substructures and components built in-house to our exacting standards. It means managing each detail to ensure the integrity and quality of every coach. It means barcoding parts to save time during service and running every coach through a gauntlet of tests, including a high-pressure water test before it leaves the factory.

Where other manufacturers cut corners, SuperStructure ensures the features you can't see are treated with the same care as the ones you can. When you buy a Winnebago motor home, you are getting a coach that is built for you—and built to last.



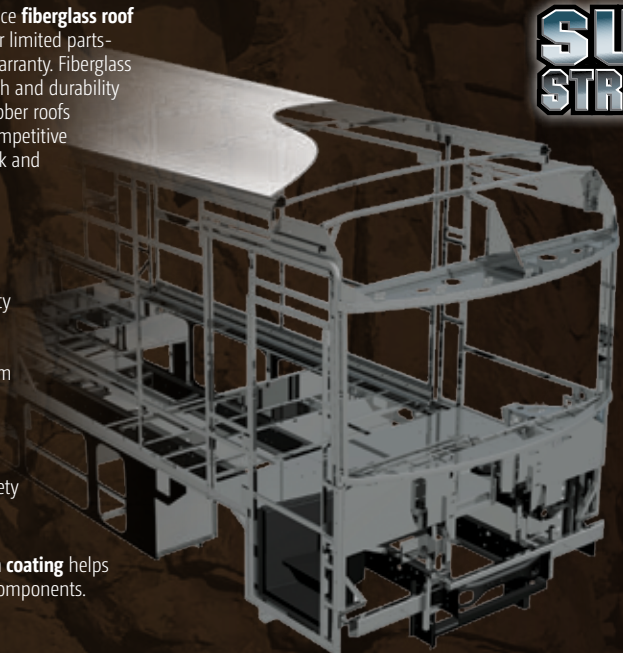
The crowned, one-piece **fiberglass roof** is backed by a 10-year limited parts-and-labor roof skin warranty. Fiberglass offers superior strength and durability over less attractive rubber roofs found on so many competitive models that can streak and degrade over time.

Durable, lightweight **Thermo-Panel® sidewalls** combine fiberglass, high-density block-foam insulation and the inner wall surface with aluminum support structures.

**Metal substructures** secure cabinets and appliances to add safety and stability.

An **electrodeposition coating** helps protect critical steel components.

## SUPER STRUCTURE®



Specially engineered **interlocking joints** connect the floor, sidewalls and roof into a cohesive unit.



## FREIGHTLINER® XCS CHASSIS

(Journey Express 34Y, 39N)

**340-hp Cummins® ISB 6.7L turbo-charged diesel engine**

**Rear radiator**

**Allison® 2500 MH 6-speed automatic transmission**

**NeWay® front and rear air suspension**

**160-amp. alternator**

**Air brakes w/ABS**

**Engine exhaust brake**

**HWH® automatic hydraulic leveling jacks**

**7-pin trailer wiring**

**Trailer Hitch®:** 10,000-lb. drawbar/  
500-lb. maximum vertical tongue weight

**Stainless steel wheel liners**

## MAXUM® FREIGHTLINER XCL CHASSIS

(Journey 40L, 40U)

**360-hp Cummins ISC 8.3L turbo-charged diesel engine** (2010 EPA emissions-equipped  
380-hp ISC Cummins engine - Fall 2010 production)

**Rear radiator**

**Allison 3000 MH 6-speed automatic transmission**

**NeWay front and rear air suspension**

**160-amp. alternator**

**Air brakes w/ABS**

**Engine exhaust brake**

**Quick-connect air connection w/manual shut off**

**HWH automatic hydraulic leveling jacks**

**7-pin trailer wiring**

**Trailer Hitch®:** 10,000-lb. drawbar/  
500-lb. maximum vertical tongue weight

**Stylized aluminum wheels**

## CAB CONVENIENCES

**Cab Seats:** armrests, lumbar support and multi-adjustable slide/recline/swivel

**Power driver seat** (40L, 40U)

**Passenger seat w/footrest** (40L, 40U)

**RV Radio®/Rearview Monitor System:** 6.5" LCD touch screen, CD player, weather band, remotes, iPod/MP3 input, rearview color camera and sideview camera system

**Cruise control**

**12-volt powerpoints**

**Powered stepwell cover**

**Powered MCD American Duo® solar/blackout roller shades** (front windshield)

**Defroster fans**

**MCD American Duo solar/blackout roller shades** (driver and passenger windows)

**Chassis/house battery radio power switch**

**Power mirrors w/defrost**

**TWR® tilt/telescopic steering column**

**Map lights**

**Power door lock w/remotes**

**C.B. wire prep**

### OPTIONAL EQUIPMENT

**GPS Navigation System:** RV Radio/rearview monitor system w/7" LCD touch screen, iPod/MP3 input, Bluetooth, CD/DVD player, navigation, secondary monitor, remote controls, rearview and sideview cameras, Sirius® satellite ready

**Sirius Satellite Radio:** 6-month complimentary subscription and iPod interface connector

**Power passenger seat** (40L, 40U)

**Power driver's seat** (34Y, 39N)

**Passenger seat w/footrest** (34Y, 39N)

## INTERIOR

**40" LCD HDTV** (39N, 40L, 40U)

**32" LCD HDTV** (34Y front overhead)

**Home Theater Sound System:** FM/CD/DVD player, amplifier, receiver, 5 speakers and subwoofer

**Satellite system ready**

**Amplified digital TV antenna**

**HD video selection system**

**Key-activated slideroom master lock switch**

**Mini blind** (40U bath)

**MCD American Duo solar/blackout roller shades** (lounge, dinette and bedroom)

**Vinyl ceiling**

**OnePlace® systems center**

**Tinted dual-glazed/thermo-insulated/flush-mounted windows**

**Powered roof vent** (galley & bath)

### OPTIONAL EQUIPMENT

**Combination washer/dryer** (34Y, 39N)

**Stackable washer and dryer** (40L, 40U)

**Electric fireplace** (40L, 40U)

**King-Dome® HD-ready in-motion satellite dish w/dual LNB** (front and bedroom, 40L, 40U)

**King-Dome automatic satellite dish w/single LNB** (front and bedroom)

**32" LCD HDTV** (front overhead, 39N, 40L)

**Retractable 40" LCD HDTV, buffet, dining table and chairs** (34Y)

**"Your HD"-compatible satellite TV receiver**

## KITCHEN

**Corian® countertops**

**4-door refrigerator/freezer w/icemaker**

**Microwave oven w/vented range fan** (34Y, 39N)

**Microwave/convection oven w/vented range fan** (40L, 40U)

**3-burner Amana® range top w/storage below Corian range and sink covers**

**Filtration system w/separate cold water faucet** (40L, 40U)

**Soap dispenser** (40L, 40U)

### OPTIONAL EQUIPMENT

**Microwave/convection oven w/vented range fan** (34Y, 39N)

**3-burner Amana range w/oven**

**Residential stainless steel Maytag® french door refrigerator w/water/ice dispenser and bottom freezer drawer** (40L, 40U) (w/2,800-watt inverter and 2 additional 12-volt coach batteries)

## BATH

**Laminate countertop** (34Y, 39N)

**Corian countertop** (40L, 40U)

**Handheld showerhead**

**Textured glass shower door**

**Skylight**

**Porcelain toilet**

## BEDROOM

**26" LCD HDTV** (34Y, 39N)

**32" LCD HDTV** (40L, 40U)

**Queen bed w/innerspring mattress**

**Bedsprad, pillows, and pillow shams**

### OPTIONAL EQUIPMENT

**King (NA 39N) or queen Ideal Rest® Digital Comfort Control mattress w/remotes**

**Powered king bed w/Ideal Rest Digital Comfort Control mattress** (39N)

**King bed w/innerspring mattress** (34Y, 40L, 40U)

**Bunk Beds:** foam mattresses w/covers, pillows and shams (39N)

**DVD Players** (2) w/LCD monitors (39N bunk beds)

**Stereo System:** AM/FM stereo, CD/DVD player, alarm clock, iPod/MP3 input, headphone jack, speakers

**Ceiling fan** (40L, 40U)

## EXTERIOR

**Powered patio awning w/wind sensor**

**KeyOne® lock system**

**Porch lights**

**Entrance w/screen door**

**Powered entrance awning**

**Lighted storage compartments**

**Driver's side docking/service light**

**Lighted stepwell**

**Storage containers w/lids** (4) (40L, 40U)

**Automatic entrance steps**

**Auxiliary side lamps**

**Ladder**

**Black mirror heads** (34Y, 39N)

**Chrome mirror heads w/amber turn signal lamps** (40L, 40U)

**Full-width mudguard** (40L, 40U)

### OPTIONAL EQUIPMENT

**Entertainment Center:** 32" LCD TV, AM/FM stereo, speakers, DVD player w/remote, radio antenna

**7' folding step ladder** (40L, 40U)

**Lower front protective mask**

**Slideout compartment tray** (40L, 40U)

## HEATING & COOLING SYSTEM

**TrueAir® Maximum Comfort A/C, 13,500 BTU w/heat pump** (2 cooling units 34Y, 3 cooling units 39N, 40L, 40U)

**40,000 BTU furnace w/2-stage blower** (34Y, 39N)

**35,000 BTU primary furnace** (40L, 40U)

**20,000 BTU secondary furnace** (40L, 40U)

## ELECTRICAL SYSTEM W/QUICKPORT®

**Service Center:** lighted, cable input, 50-amp. power cord, shoreline/generator automatic changeover switch, portable satellite hookup

**1,000-watt inverter w/remote panel** (34Y, 39N)

**2,000-watt inverter w/remote panel** (40L, 40U)

**6,000-watt Cummins Onan® Quiet Diesel™ generator** (34Y)

**8,000-watt Cummins Onan Quiet Diesel generator** (39N, 40L, 40U)

**Auxiliary start circuit**

**AC/DC electrical distribution system**

**80-amp. converter/charger** (34Y, 39N)

**2 Deep-cycle Group 31 marine/RV batteries** (34Y, 39N)

**4 Deep-cycle Group 31 marine/RV AGM batteries** (40L, 40U)

**Battery disconnect system** (coach and chassis)

**PowerLine® energy management system**

**Automatic dual-battery charge control**

**Solar panel battery charger**

**Chassis battery charger/maintainer**

### OPTIONAL EQUIPMENT

**8,000-watt Cummins Onan Quiet Diesel generator** (34Y)

**Cummins Onan Energy Command™ automatic generator start system**

\*Exterior storage volumes reflect pre-2010 EPA emissions equipped chassis. Exterior storage volumes on 2010 EPA emissions equipped chassis are reduced by approximately 10 cu. ft. See your dealer for details.

## PLUMBING SYSTEM W/QUICKPORT & QUICKCONNECT®

**Service Center:** pressurized city water hookup w/diverter fill, fresh water drain, drainage valves, exterior wash station w/pump switch, holding-tank flushing system, 10' sewer hose, QuickPort, QuickConnect (40L, 40U), lights

**On-demand water pump**

**10-gallon water heater w/motoraid**

**TrueLevel™ holding-tank monitoring system**

**Winterization Package:** water heater bypass valve and siphon tube

**Full-coach water filtration system**

**LP tank w/gauge**

**Heated holding-tank compartment**

## SAFETY

**Seat belts**

**Child seat tether anchor** (dinette)

**LP, smoke and carbon monoxide detectors**

**10 BC fire extinguisher**

**Ground fault interrupter**

**Fog lamps**

**High-mount brake lamps**

## WARRANTY<sup>7</sup>

**12-month/15,000-mile basic warranty,<sup>8</sup> 36-month/36,000-mile limited warranty on structure,<sup>8</sup> 10-year limited parts-and-labor warranty on roof skin<sup>8</sup>**

- The height of each model is measured to the top of the tallest standard feature and is based on the curb weight of a typically equipped unit. The actual height of your vehicle may vary by several inches depending on chassis or equipment variations. Please contact your dealer for further information.
- Journey and Journey Express floorplans feature a wide-body design – over 96". In making your purchase decision, you should be aware that some states restrict access on some or all state roads to 96" in body width. Before making your purchase decision, you should confirm the road usage laws in the states of interest to you.
- The load capacity of your motor home is designated by weight, not by volume, so you cannot necessarily use all available space when loading your motor home.
- Capacities are based on measurements prior to tank installation. Slight capacity variations can result due to installation applications.
- Capacities shown are tank manufacturer's listed water capacity (W.C.). Actual filled LP capacity is 80% of listing due to overfilling prevention device on tank.
- Actual towing capacity is dependent on your particular loading and towing circumstances which includes the GVWR, GAWR, and GCWR, as well as adequate trailer brakes. Please refer to the Operator's Manual of your vehicle for further towing information.
- See separate chassis warranty.
- See your dealer for complete warranty information.

NA Not Available

Not all items available in combination. See dealer for details.

Winnebago Industries® continuing program of product improvement makes specifications, equipment, model availability, and prices subject to change without notice. Comparisons to other motor homes are based on the most recent information available at printing.

# Décor

Choose from three fabric collections and four cabinet wood choices, all with hidden hinges.

## Wrought Iron with Wheatfields UltraLeather™



Main



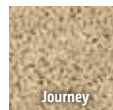
Accent



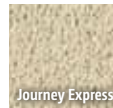
UltraLeather



Bedspread



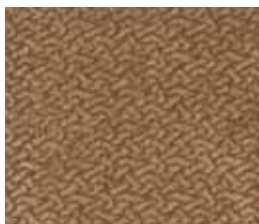
Journey



Journey Express

Carpet

## Castleton with Marsh UltraLeather



Main



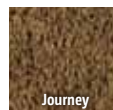
Accent



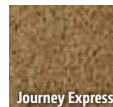
UltraLeather



Bedspread



Journey



Journey Express

Carpet

## Hawthorne with Putty UltraLeather



Main



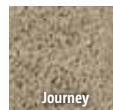
Accent



UltraLeather



Bedspread



Journey



Journey Express

Carpet



Honey Cherry



Belmont Maple



Forest Cherry



Coffee-Glazed  
Sierra Maple

# Exteriors

Choose from six striking  
full-body paint options.



**Graystone**

FULL-BODY PAINT



**Walnut Grove**

FULL-BODY PAINT



**Taupe Pearl**

FULL-BODY PAINT



**Steel Blue**

FULL-BODY PAINT



**Teal**

FULL-BODY PAINT



**Bronze**

FULL-BODY PAINT



THE MOST RECOGNIZED NAME  
IN MOTOR HOMES™



## Be Part of Something Special

**WIT Club** Winnebago owners are like family. Joining the Winnebago-Itasca Travelers Club is a great way to meet and travel with other Winnebago enthusiasts.

**Members enjoy:**

- Caravans and Rallies
- Local and State Group Activities
- RV Travel Benefits



## Committed to Service

We back our motor homes with best-in-class support both before *and* after the sale:

- 12-month/15,000-mile basic limited warranty
- 36-month/36,000-mile warranty on structure
- 10-year standard limited parts-and-labor roof skin warranty
- Complimentary 24-hour roadside assistance program
  - RV Technical Assistance Hotline
  - RV Service Appointment Assistance
  - Emergency Trip Interruption
  - Emergency Message Service
  - Nationwide Trip Routing
  - Fee-Free Travelers Cheques



- TripSaver Fast Track Parts guarantees that in-stock warranty parts ship directly to your dealer within 24 hours
- National dealer service network



**GoWinnebago.com** Visit us on the web for more information on all of our motor homes and the latest product updates. Plus, watch videos and see other web-exclusive content in our expanded key features section.



NYSE listing: WGO

For Sales and Service Information Contact:

Colton RV & Marine  
3122 Niagara Falls Blvd  
North Tonawanda, NY 14120  
(716) 694-0188  
www.ColtonRV.com

Colton RV & Marine  
3443 Southwestern Blvd  
Orchard Park, NY 14127  
(716) 957-3250  
www.Coltonrv.com

Printed in USA

Seat belts are your most important hookup. Always buckle up.

© 2010 Winnebago Industries, Inc.