

2000
Floor
PLANS
Specs
and
Features



WILDERNESS

Discover the Wilderness and discover quality and comfort wherever you plan to travel. Wilderness travel trailers and fifth wheels offer you seven different model categories and more than 50 floor plans to choose from. And, like every Fleetwood RV, each one is built solid to provide you and your family with many years of fun-filled, trouble-free service. The Ultralite is our most affordable Wilderness and light enough for most minivans, light-duty pickups and Sport Utility Vehicles. The Wilderness Lite offers big-trailer features in an easy-to-maneuver, compact package. Loaded with value, the popular Wilderness features aluminum walls on a rugged wood frame. The GL is luxurious and thanks to its multiple slide-outs, it's very spacious. The GLX is the ultimate Wilderness. It features fiberglass walls on an aluminum frame on the outside and down-to-earth, yet elegant styling on the inside. The SUT (Sport Utility Trailer) includes its own garage. And the Wilderness Park, our residential trailer, makes the perfect seasonal retreat. Wilderness—discover one for yourself.

The Wilderness Model Lineup

Wilderness Ultralite Page **4**

It's the "pick up and go" when you want to "get up and go." The Ultralite features fiberglass walls laminated to an aluminum framework—strong but light enough to be easily towed with a minivan, light-duty truck or SUV.

Wilderness Lite Page **6**

An easy-to-haul carryall that's great for a quick getaway or a week in the woods. The Lite offers big-trailer features in a maneuverable, lightweight package. It's compact on the outside, yet spacious within.

Wilderness Page **8**

Our most popular model, the Wilderness is an exceptional value. Its high-gloss aluminum walls are secured to a strong wood frame. And with 18 floor plans to choose from, there's one here for you.

Warranty Information Page **13**

Wilderness GL Page **14**

Take the Wilderness, add more features, more luxuries and a fiberglass exterior and you've got the Wilderness GL. All you need to add is an itinerary.

Wilderness Features and Benefits Page **19**

Wilderness GLX Page **20**

The definition of absolute, affordable luxury, the GLX includes fiberglass walls on an aluminum frame, two or three slide-outs, deluxe appointments, and even an entertainment center. You've got to see it to believe it.

Wilderness Sport Utility Trailer Page **22**

Have the best of both worlds. Want to bring your motorcycles, personal water craft, all-terrain vehicles, or other toys along for the trip? Please do. The Wilderness SUT is like a garage and house rolled into one.

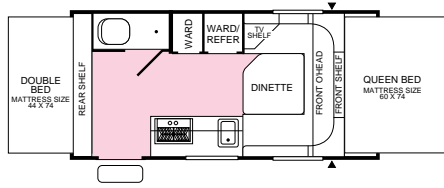
Wilderness Park Page **23**

Going to stick around a while? With ample furnishings and features, the Wilderness Park is like a condo on wheels, only better. It's the perfect solution for any sort of extended vacation.

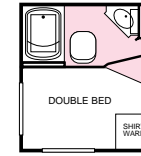
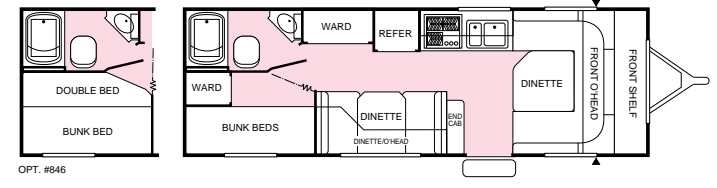
Wilderness Ultralite Floor Plans

Travel Trailers

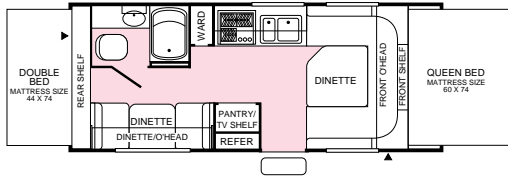
717 B
tent model



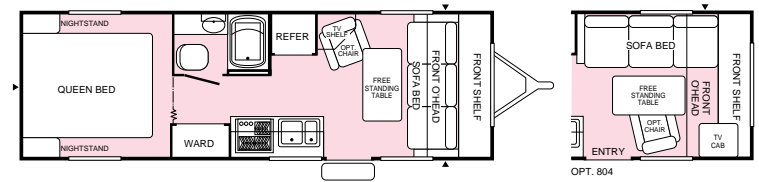
725 R



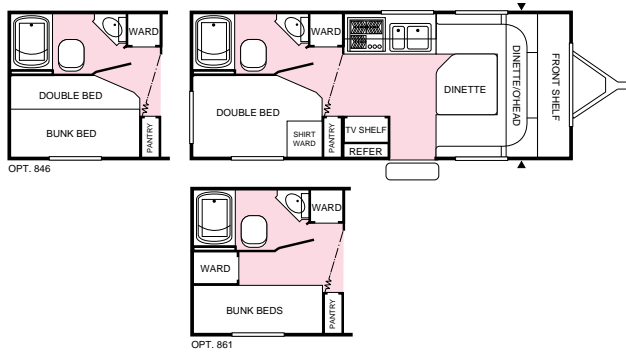
721 C
tent model



725 T

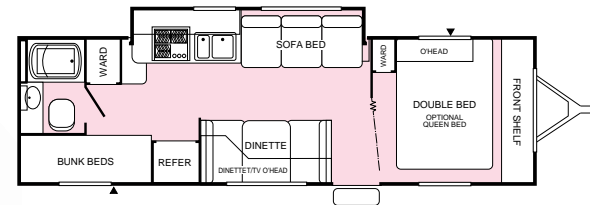


721 G



727 X

new!
slide-out model



▲ = Exterior Storage

Wilderness Ultralite Standard Features & Specifications

Exterior

- Aerodynamic Front Profile w/High Impact ABS Cap*
- Independent Torsion Suspension System
- Laminated, Welded Aluminum Framed Walls, Floor and Ceiling
- Smooth Fiberglass Exterior
- Box Channel, Steel Cambered Chassis
- 10" Electric Brakes
- Durable Molded Wheel Well Skirts*
- One-Piece Seamless Rubber Roof
- Beadboard Insulation
- 26" Wide Main Radius Entry Door w/Window & Screen
- Reinforced Screen Door w/Lock Shield & Kick Panel
- Flush Combo Entry Latch/Dead Bolt Lock
- Large, Through-Storage Front Compartment*
- Skylight Roof Vents
- Wall-Switched Doorside Patio Light w/Amber Lens
- Battery Compartment
- Fully Enclosed Chassis*
- Enclosed Below Floor Water & Waste Tanks w/Remote Valve*
- Lower Radius Skirting w/ABS Corner Caps*

Interior

- Oak Mortise and Tenon Cabinet Doors
- Full-Length Vinyl Flooring Throughout
- Miniblinds Throughout (Except Bunks)
- Curtains at Bunks
- Decor-Coordinated Bedspread (Double or Queen)
- Quality Furniture by Flexsteel®

Galley

- Double Bowl Sink*
- Galley Storage
- Pantry Cabinet (Most Models)
- Decor Wall Border

Bath

- Overhead Medicine Cabinet w/Mirror*
- Thetford® Toilet
- Wall-Switched Ceiling Light
- Skylight in Tub/Shower*

Appliances/Equipment

- Dometic® LP/Electric Refrigerator
- Atwood® 3-Burner Cook Top*
- Range Hood w/12V Light and Exhaust Fan
- Wall-Mounted Systems Monitor Panel*
- LP Fast Recovery Water Heater, 6-Gallon
- 30-Gallon Water and Waste Tanks*
- hydroflame® Furnace w/Thermostat
- Microwave w/Turntable*
- A&E Patio Awning*
- Enclosed Dual 5-Gallon LPG Tanks w/Regulator & Auto-Changeover*
- Smoke Detector
- Fire Extinguisher
- Freeze-Resistant Water Lines
- LPG Leak Detector
- Water Heater Bypass

Electrical

- Electronic Converter w/Built-in Battery Charger
- 120V Central Electrical Panel
- 120V Ground Fault Circuit Protection
- Prewired for TV Antenna*
- Prewired for Air Conditioner
- Prewired for Stereo and Speaker*

Wilderness Ultralite Popular Options

- Coleman® 13.5M BTU Roof Air Conditioner
- Front Combo Overhead Bunk (Most Models)
- Water Purifier
- AM/FM Cassette Stereo
- AM/FM CD Player
- Stabilizing Jacks/2 Pr.
- Spare Tire
- Chair
- TV Antenna

*Not all models include all features. See your dealer for complete details.
* Feature not available on all tent models.*

| Wilderness Ultralite Models | 717 B | 721 C | 721 G | 725 R | 725 T | 727 X |
|--|--|---|-----------------------------------|-------------------------------------|---------------------|--|
| GVWR (Gross Vehicle Weight Rating) | 3,500 | 4,400 | 4,400 | 4,900 | 4,900 | 6,000 |
| Gross Dry Weight ¹ | 2,290 | 2,980 | 3,000 | 3,360 | 3,410 | 4,130 |
| Carrying Capacity ² | 1,210 | 1,420 | 1,400 | 1,540 | 1,490 | 1,870 |
| Hitch Dry Weight ¹ | 220 | 360 | 350 | 350 | 390 | 420 |
| Dry Axle Weight ¹ | 2,070 | 2,620 | 2,650 | 3,010 | 3,020 | 3,710 |
| Length ³ | 17' 9" | 21' 8" | 21' 6" | 25' 6" | 25' 11" | 27' 11" |
| Width ⁶ | 7' 2" | 7' 2" | 7' 2" | 7' 2" | 7' 2" | 7' 2" |
| Height ⁴ | 8' 4" | 8' 3" | 8' 3" | 8' 3" | 8' 3" | 8' 3" |
| Interior Height | 76" | 76" | 76" | 76" | 76" | 76" |
| Interior Width | 84" | 84" | 84" | 84" | 84" | 83" |
| Tires – Size (Radials) | ST205/ 75R 14(C) | ST175/ 80R 13(B) | ST175/ 80R 13(B) | ST175/ 80R 13(C) | ST175/ 80R 13(C) | ST175/ 80R 13(C) |
| Fresh Water Tank ⁵ – gal. | 25 | 25 | 30 | 30 | 30 | 30 |
| Gray Water Holding Tank ⁵ – gal. | 30 | 30 | 30 | 30 | 30 | 30 |
| Black Water Holding Tank ⁵ – gal. | 7 | 30 | 30 | 30 | 30 | 30 |
| Bed Size – Standard | 60"x74" Front Queen 44"x74" Rear Double | 60"x74" Front Queen 44"x74" Rear Double 26"x72" Dinette | 48"x74" Double 58"x84" Dinette | 27"x74" Bunk (2) 58"x84" Dinette | 36"x74" Dinette | 60"x75" Queen 53"x74" Double 27"x74" Bunk (2) 36"x74" Dinette |
| Maximum Sleeping Capacity | 6 | 8 | 6 | 8 | 5 | 8 |

¹ All dry weights are based on standard model features and do not include optional features or equipment.

² Carrying capacity is determined by subtracting Gross Dry Weight from GVWR. Carrying capacity includes all fluids, optional equipment and personal cargo.

³ Includes 3'6" for hitch.

⁴ Add 12" if equipped with optional roof air conditioner.

⁵ Approximate gallons.

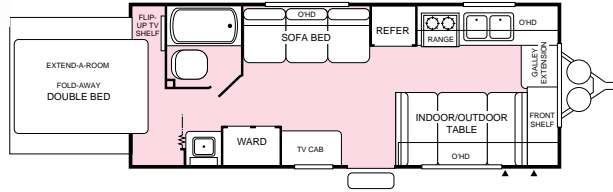
⁶ Add 3" for Awning.

Wilderness Lite Floor Plans

Travel Trailers & Fifth Wheels

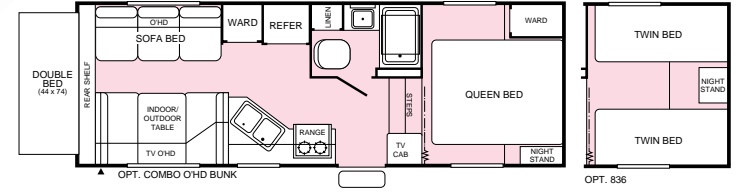
new!

824 E

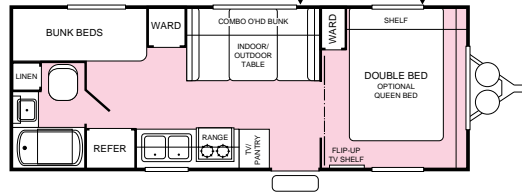


new!

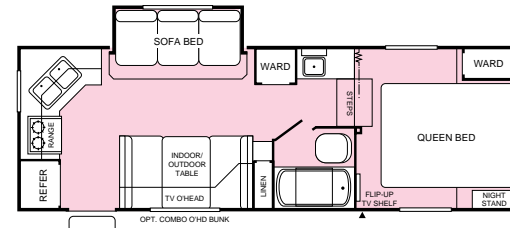
824 5B
fifth wheel tent model



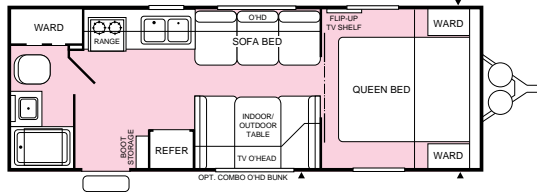
824 Z



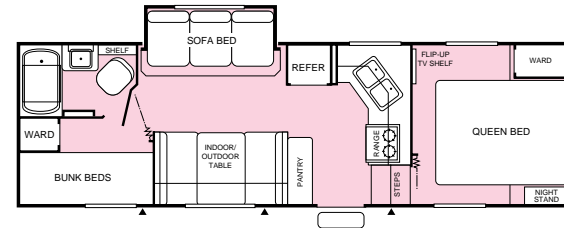
824 5C
fifth wheel



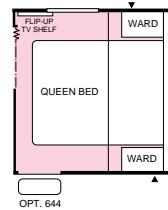
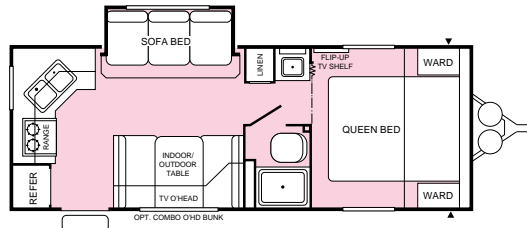
825 B



825 5X
fifth wheel



825 Y



OPT. 644

OPT. 644

▲ = Exterior Storage

Wilderness Lite Standard Features & Specifications

Travel Trailers & Fifth Wheels

Exterior

- One-Piece Seamless Rubber Roof
- High Gloss Arctic White Exterior Finish
- Entry Door w/Window & Screen Door
- One-Piece Flush Latch/Dead Bolt Lock
- Awning
- 14" Spoke Wheels
- 4-Wheel Electric Brakes
- Powder Coated Bumper – Sewer Hose Carrier
- Locking, Insulated Luggage Doors w/Finger Pulls
- Potable Water Fill
- Exterior Shower
- Dual Safety Chains
- Dual Battery Rack
- Single Entry Step

Interior

- Overhead Bunk Cabinet (Select Models)
- Large Radiused Torque & Slider Windows
- Miniblinds Throughout (Except Bunk Areas)
- Designer Valances
- Raised Oak Panel Overhead Doors
- Color-Coordinated Bedspread
- Bed-Lift Struts
- Folding Room Divider (Most Models)
- Indoor/Outdoor Dinette Table
- Full-Length Vinyl Flooring
- Sink Lid

Bath

- ABS Tub/Shower Pan
- Bath Medicine Cabinet w/Mirrored Door
- Towel Bars
- Large Dome Skylight
- Power Roof Vent
- Thetford® Freshwater Toilet

Appliances/Equipment

- Dometic® Double Door LP/Electric Refrigerator
- Magic Chef® 3-Burner, High-Output Range w/Oven
- Electric Touch Microwave w/Turntable
- 6-Gallon LP Water Heater
- Water Heater Bypass
- Large Stainless Steel Sink
- Fire Extinguisher
- Smoke Detector
- LPG Leak Detector
- 7-Gallon Dual LP Bottles w/Regulator & Auto-Changeover

Electrical

- Electric Cable Hatch/Storage Compartment
- 120V G.F.I. Protected Circuits
- Prewired for Optional Air Conditioner
- Wall-Switched Patio Light
- Hitch Light
- AM/FM Cassette Stereo
- TV Antenna/Park Cable

Wilderness Lite Popular Options

- Coleman® 13.5M BTU Roof Air Conditioner
- Tinted Safety Glass Windows
- Spare Radial Tire w/Carrier
- Carpeting in Living Area & Bedroom
- Decor Mirror Doors
- Water Purifier

Not all models include all features.
See your dealer for complete details.

| Wilderness Lite Models | 824 E | 824 Z | 825 B | 825 Y | 824 5B | 824 5C | 825 5X |
|--------------------------------------|---------------------|------------------------------------|---------------------|---------------------|---------------------------------|---------------------|-----------------------------------|
| GVWR (Gross Vehicle Weight Rating) | 5,600 | 5,600 | 5,900 | 6,100 | 6,100 | 6,400 | 6,600 |
| Gross Dry Weight ¹ | 3,810 | 3,810 | 4,040 | 4,330 | 4,460 | 4,680 | 4,870 |
| Carrying Capacity ² | 1,790 | 1,790 | 1,860 | 1,770 | 1,640 | 1,720 | 1,730 |
| Hitch Dry Weight ¹ | 480 | 450 | 410 | 430 | 760 | 630 | 970 |
| Dry Axle Weight ¹ | 3,330 | 3,360 | 3,630 | 3,900 | 3,700 | 4,050 | 3,900 |
| Length ³ | 24' 2" | 25' 9" | 26' 6" | 25' 11" | 25' 1" | 25' 4" | 27' 11" |
| Width ⁶ | 8' 0" | 8' 0" | 8' 0" | 8' 0" | 8' 0" | 8' 0" | 8' 0" |
| Height ⁴ | 8' 11" | 8' 11" | 8' 11" | 9' 3" | 9' 6" | 9' 10" | 9' 10" |
| Tires – Size (Radials) | ST205/ 75R 14(B) | ST205/ 75R 14(B) | ST205/ 75R 14(B) | ST205/ 75R 14(B) | ST205/ 75R 14(B) | ST205/ 75R 14(B) | ST205/ 75R 14(B) |
| Fresh Water Tank ⁵ – gal. | 40 | 40 | 40 | 40 | 40 | 40 | 40 |
| Gray Water Tank ⁵ – gal. | 40 | 40 | 40 | 30/30 | 40 | 30/30 | 30/30 |
| Black Water Tank ⁵ – gal. | 40 | 40 | 30 | 40 | 40 | 40 | 40 |
| LPG Capacity – gal. | 14 | 14 | 14 | 14 | 10 | 10 | 10 |
| Bed Size – Standard | 53"x75" Double | 53"x75" Double 29"x76" Bunk (2) | 60"x75" Queen | 60"x75" Queen | 60"x75" Queen 44"x74" Double | 60"x75" Queen | 60"x75" Queen 29"x76" Bunk (2) |
| Bed Size – Option | | 60"x75" Queen | | | 32"x75" Twin (2) | | |
| Maximum Sleeping Capacity | 6 | 7 | 7 | 7 | 9 | 7 | 8 |

¹ All dry weights are based on standard model features and do not include optional features or equipment.

² Carrying capacity is determined by subtracting Gross Dry Weight from GVWR. Carrying capacity includes all fluids, optional equipment and personal cargo.

³ Trailer length includes 3' 6" for hitch, fifth wheel includes pin box.

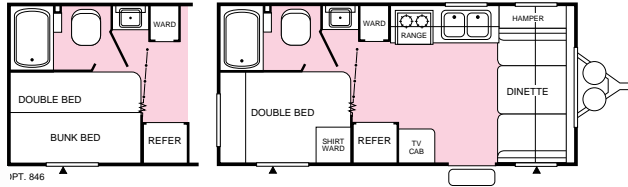
⁴ Add 12" if equipped with optional roof air conditioner.

⁵ Approximate gallons.

⁶ Add 3" for awning.

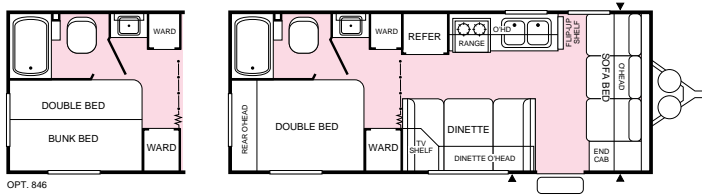
Wilderness Floor Plans

19 N

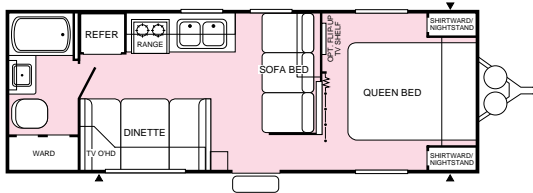


new!

22 C

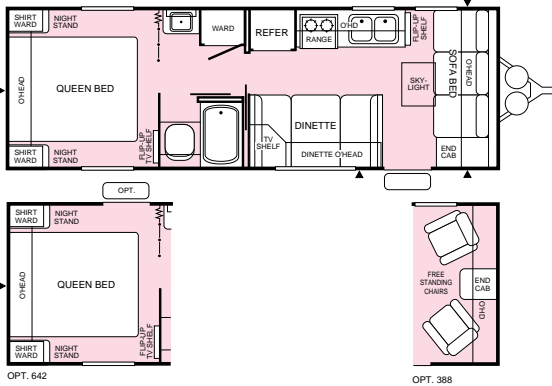


24 J

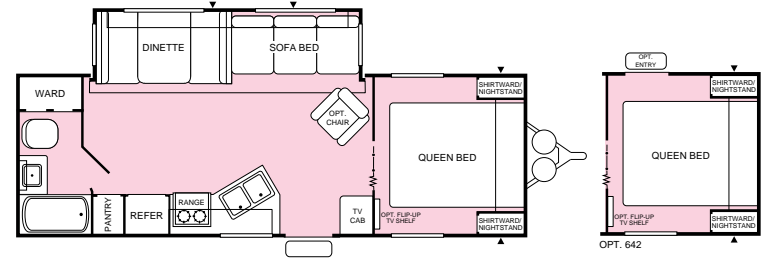


new!

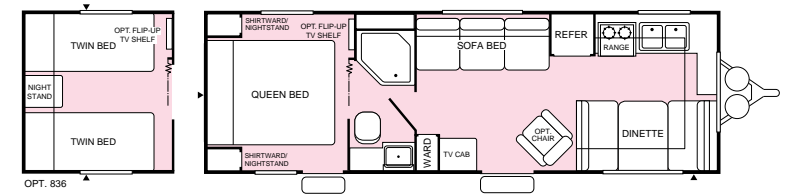
25 L



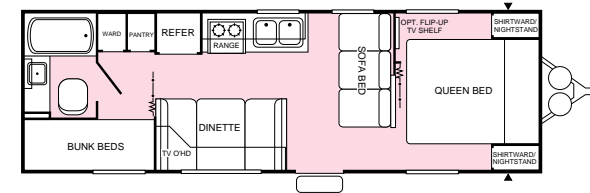
26 H



26 T

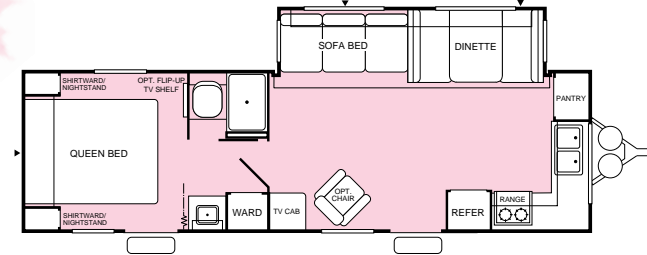


27 X



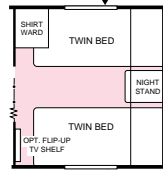
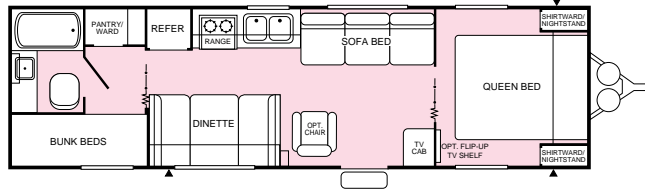
new!

29 B



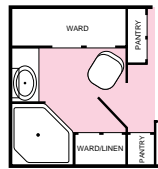
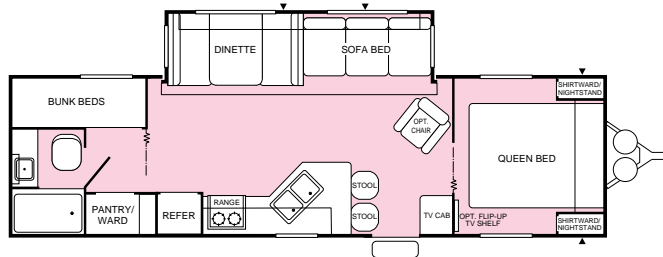
Wilderness Floor Plans

29 S

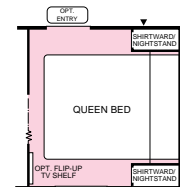


OPT. 836

31 G



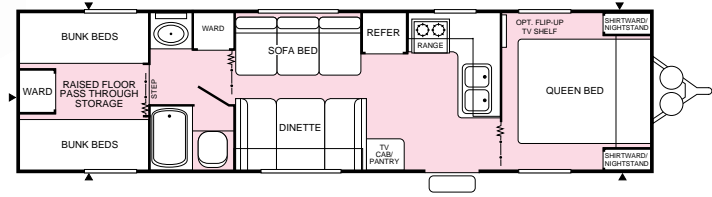
OPT. 170



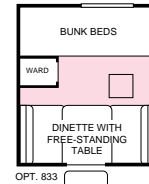
OPT. 642

new!

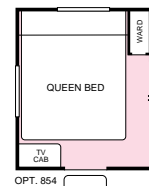
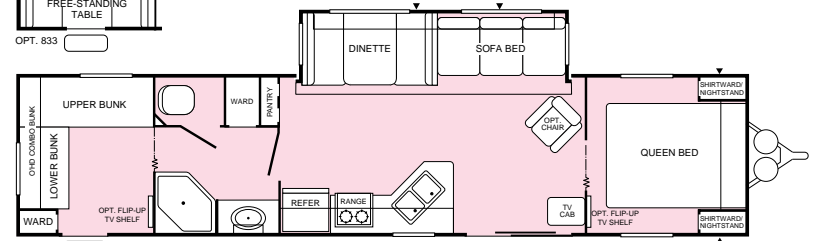
33 V



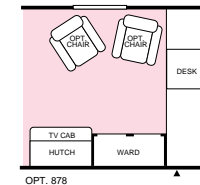
37 E
with
park model
features



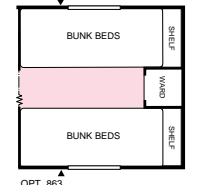
OPT. 833



OPT. 854



OPT. 878



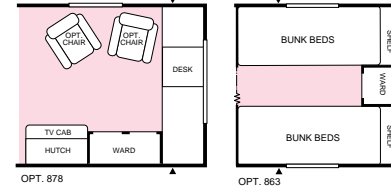
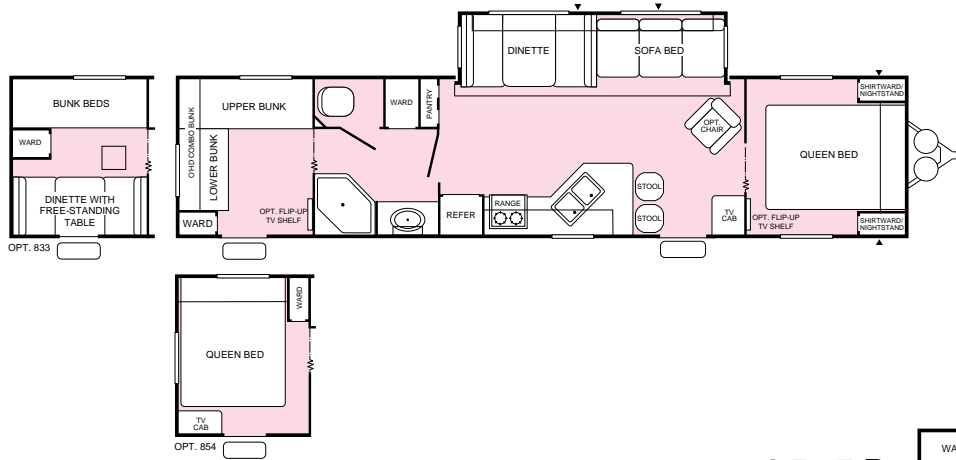
OPT. 863

▲ = Exterior Storage

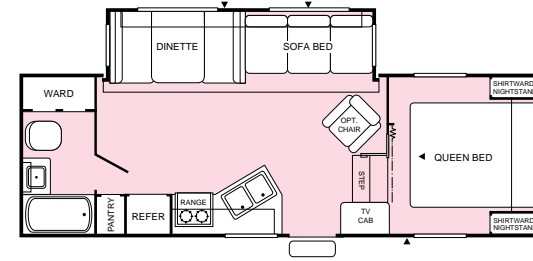
Wilderness Floor Plans

Travel Trailers & Fifth Wheels

37 W

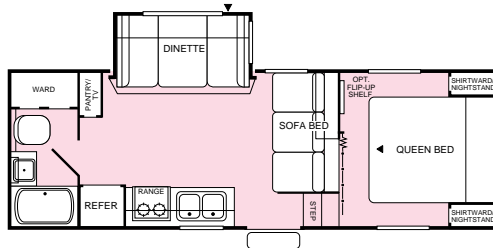


25 5B
fifth wheel



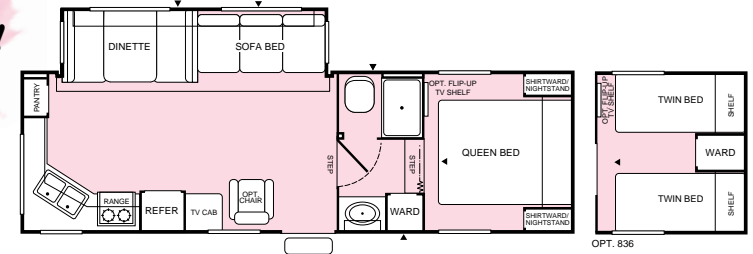
new!

23 5M
fifth wheel

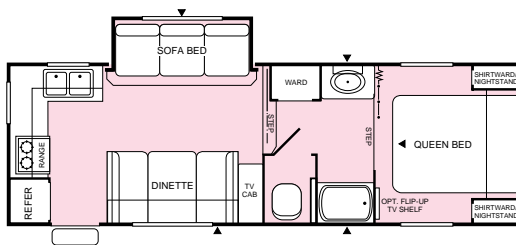


new!

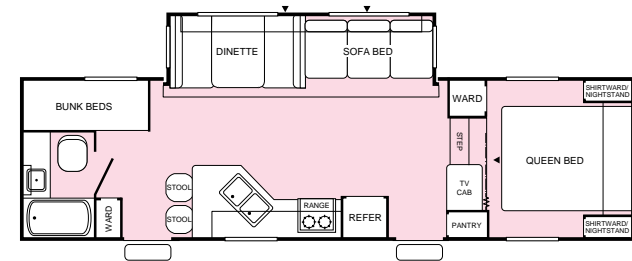
27 5J
fifth wheel



24 5P
fifth wheel



28 5S
fifth wheel



▲ = Exterior Storage

Wilderness Standard Features

Exterior

- Gloss Exterior Metal Finish
- Construction Steel Channel or I-Beam, Cambered Chassis
- Tandem Axle w/4-Wheel Electric Brakes
- Radial Ply Tires w/White Spoke Wheels
- Rear Bumper w/Sewer Hose Carrier
- Retractable Non-Skid Entry Step
- Locking, Insulated Luggage Doors w/Finger Pulls
- One-Piece Seamless Roof
- Engineered Radius Roof Truss Rafters
- R-7 Fiberglass Insulation
- 30" Wide Main Entry Door w/Window (Most Models)
- Flush Combo Entry Latch/Dead Bolt Lock
- Reinforced Screen Door w/Lock Shield & Kick Panel
- Radiused Slider and Torque Windows
- LPG Tank Cover (Travel Trailers)
- Skylight Roof Vents
- Hitch Light
- Wall-Switched Doorside Patio Light
- Welded Dual Battery Rack (Travel Trailers)
- Waste Tank Single Point Termination Valve
- Sonic-Welded, Automotive-Style Clearance Lights
- G.F.I. Protected 120V Duplex Receptacle
- A&E® Patio Awning

Interior

- Quality Furniture by Flexsteel®
- Color-Coordinated Designer Interiors
- Raised Oak Panel Cabinet Doors
- Face Frame Cabinet Construction

- Overhead Dinette Storage Cabinet
- Box-Wrapped Valance Window Treatment
- Innerspring Mattresses
- Decor-Coordinated Bedspread w/Pillow Shams
- Wall Mounted 120V Decor Light
- Miniblinds Throughout (Except Bunks)

Galley

- Double Bowl Stainless Steel Sink
- High Pressure Laminate Countertop
- Overhead Storage Cabinet Above Sink
- Pantry Cabinet (Most Models)
- 120V Appliance Receptacle at Countertop

Bath

- Large Lavy Bowl
- Medicine Cabinet w/Mirrored Door
- Thetford® Fresh Water Flush Toilet
- 12V Power Roof Exhaust Vent
- Shower Curtain
- G.F.I. Protected 120V Duplex Receptacle
- Wall-Switched Ceiling Light

Appliances/Equipment

- Electric Microwave Oven w/Turntable
- Dometic® Double Door LP/Electric Refrigerator
- Magic Chef® 3-Burner, High-Output Range w/Oven
- Range Hood w/12V Light and Exhaust Fan
- Wall-Mounted Systems Monitor Panel
- Water Heater Bypass
- hydroflame® Forced Air, D.S.I. Furnace w/Thermostat
- In-Floor Rigid Heat Ducting
- In-Ceiling Rigid Air Conditioning Ducting (Most Models)

- Dual 7-Gallon LPG Tanks w/Regulator & Auto-Changeover
- Smoke Detector
- Fire Extinguisher
- Freeze-Resistant Water Lines
- LPG Leak Detector

Electrical

- Electronic Converter w/Built-in Battery Charger
- 120V Central Electrical Panel
- 120V Duplex Receptacles Throughout
- 120V Ground Fault Circuit Protection
- 120V Patio Receptacle
- Wall-Switched Interior Lights
- TV Antenna
- Prewired for Roof Air Conditioner
- AM/FM Cassette Stereo, Cable TV Hook-Up

Wilderness Popular Options

- Living Room/Bedroom Carpet
- Coleman® Ducted Central Air Conditioning
- Exterior Shower
- Safety-Glass Windows
- Foot-Pedal Toilet
- Free-Standing Swivel Rocker
- 120V/LP Fast Recovery Water Heater
- Spare Tire
- Radius Luggage Doors
- Radius Entry Door
- Water Purifier

*Not all models include all features.
See your dealer for complete details.*

Wilderness Specifications

Travel Trailers & Fifth Wheels

| Wilderness Models | 19 N | 22 C | 24 J | 25 L | 26 H | 26 T | 27 X | 29 B | 29 S | 31 G |
|--|---------------------|---------------------|---------------------|---------------------|---------------------|---------------------|---------------------|---------------------|---------------------|---------------------|
| GVWR (Gross Vehicle Weight Rating) | 5,400 | 5,700 | 6,200 | 6,400 | 7,700 | 6,800 | 7,000 | 8,300 | 7,400 | 8,600 |
| Gross Dry Weight ¹ | 3,810 | 3,850 | 4,350 | 4,520 | 5,690 | 4,790 | 4,990 | 6,230 | 5,250 | 6,410 |
| Carrying Capacity ² | 1,590 | 1,850 | 1,850 | 1,880 | 2,010 | 2,010 | 2,010 | 2,070 | 2,150 | 2,190 |
| Hitch Dry Weight ¹ | 420 | 480 | 570 | 540 | 610 | 610 | 580 | 900 | 590 | 830 |
| Dry Axle Weight ¹ | 3,390 | 3,370 | 3,780 | 3,980 | 5,080 | 4,180 | 4,410 | 5,330 | 4,660 | 5,580 |
| Length ³ | 20' 5" | 23' 7" | 25' 10" | 26' 11" | 27' 8" | 28' 2" | 28' 9" | 30' 6" | 31' 1" | 31' 10" |
| Width ⁶ | 8' 0" | 8' 0" | 8' 0" | 8' 0" | 8' 0" | 8' 0" | 8' 0" | 8' 0" | 8' 0" | 8' 0" |
| Height ⁴ | 8' 11" | 8' 11" | 8' 11" | 9' 0" | 9' 6" | 9' 0" | 9' 0" | 9' 6" | 9' 0" | 9' 6" |
| Tires – Size (Radials) | ST205/ 75R 15(B) | ST205/ 75R 15(B) | ST205/ 75R 15(B) | ST205/ 75R 15(C) | ST205/ 75R 15(C) | ST205/ 75R 15(C) | ST205/ 75R 15(C) | ST225/ 75R 15(C) | ST205/ 75R 15(C) | ST225/ 75R 15(C) |
| Fresh Water Tank ⁵ – gal. | 40 | 40 | 40 | 40 | 40 | 40 | 40 | 40 | 40 | 40 |
| Gray Water Holding Tank ⁵ – gal. | 40 | 40 | 40 | 40 | 40 | 40 | 40 | 40/21 | 40 | 40 |
| Black Water Holding Tank ⁵ – gal. | 40 | 40 | 40 | 40 | 40 | 40 | 40 | 40 | 40 | 40 |
| LPG Capacity – gal. | 14 | 14 | 14 | 14 | 14 | 14 | 14 | 14 | 14 | 14 |
| Bed Size – Standard | 53"x75" Double | 53"x75" Double | 60"x75" Queen | 60"x75" Queen | 60"x75" Queen | 60"x75" Queen | 60"x75" Queen | 60"x75" Queen | 60"x75" Queen | 60"x75" Double |
| Bed Size – Option | 29"x76" Bunk (2) | 29"x76" Bunk (1) | | | | | 29"x74" Bunk (2) | | 29"x74" Bunk (2) | 29"x74" Bunk (2) |
| Maximum Sleeping Capacity | 6 | 7 | 6 | 6 | 6 | 6 | 8 | 6 | 8 | 8 |

| Wilderness Models (cont.) | 33 V | 37 E | 37 W | 23 5M | 24 5P | 25 5B | 27 5J | 28 5S |
|--|---------------------|---------------------|---------------------|---------------------|---------------------|---------------------|---------------------|---------------------|
| GVWR (Gross Vehicle Weight Rating) | 7,700 | 9,700 | 10,000 | 7,500 | 7,900 | 8,000 | 8,800 | 9,300 |
| Gross Dry Weight ¹ | 5,430 | 7,520 | 7,480 | 5,600 | 6,020 | 6,110 | 6,760 | 7,140 |
| Carrying Capacity ² | 2,270 | 2,180 | 2,520 | 1,900 | 1,880 | 1,890 | 2,040 | 2,160 |
| Hitch Dry Weight ¹ | 650 | 1,050 | 1,050 | 930 | 980 | 1,140 | 1,110 | 1,300 |
| Dry Axle Weight ¹ | 4,780 | 6,470 | 6,430 | 4,600 | 5,040 | 4,970 | 5,650 | 5,840 |
| Length ³ | 33' 11" | 38' 4" | 38' 4" | 25' 6" | 25' 2" | 26' 7" | 27' 10" | 29' 11" |
| Width ⁶ | 8' 0" | 8' 0" | 8' 0" | 8' 0" | 8' 0" | 8' 0" | 8' 0" | 8' 0" |
| Height ⁴ | 9' 0" | 9' 6" | 9' 6" | 11' 0" | 11' 2" | 11' 7" | 11' 4" | 11' 7" |
| Tires – Size (Radials) | ST205/ 75R 15(C) | ST225/ 75R 15(D) | ST225/ 75R 15(D) | ST205/ 75R 15(B) | ST205/ 75R 15(C) | ST205/ 75R 15(C) | ST225/ 75R 15(C) | ST225/ 75R 15(C) |
| Fresh Water Tank ⁵ – gal. | 40 | 40 | 40 | 40 | 40 | 40 | 40 | 40 |
| Gray Water Holding Tank ⁵ – gal. | 40 | 40 | 40 | 40 | 40/21 | 40 | 40/21 | 40 |
| Black Water Holding Tank ⁵ – gal. | 40 | 40 | 40 | 40 | 40 | 40 | 40 | 40 |
| LPG Capacity – gal. | 14 | 14 | 14 | 14 | 14 | 14 | 14 | 14 |
| Bed Size – Standard | 60"x75" Queen | 60"x75" Queen | 60"x75" Queen | 60"x75" Queen | 60"x75" Queen | 60"x75" Queen | 60"x75" Queen | 60"x75" Queen |
| Bed Size – Option | 29"x74" Bunk (2) | 29"x76" Bunk (2) | 29"x76" Bunk (2) | | | | | 29"x74" Bunk (2) |
| Maximum Sleeping Capacity | 10 | 12 | 12 | 6 | 6 | 6 | 6 | 8 |

¹ All dry weights are based on standard model features and do not include optional features or equipment.

² Carrying capacity is determined by subtracting Gross Dry Weight from GVWR. Carrying capacity includes all fluids, optional equipment and personal cargo.

³ Trailer length includes 3'6" for hitch, fifth wheel includes pin box.

⁴ Add 12" if equipped with optional roof air conditioner.

⁵ Approximate gallons.

⁶ Add 3" for awning.

Fleetwood's Far-Reaching Warranty & Service Program

Two Year Full Warranty

Leaving the Fleetwood dealership after you've purchased your RV doesn't mean leaving your dealer's commitment to your satisfaction behind. OWNERCARE, Fleetwood's extensive warranty and service program, provides two full years of total warranty coverage. OWNERCARE, stands out as one of the RV industry's most comprehensive programs and includes systems, appliances, components and construction—with no service charges or costs to you.



Fully Transferable

At Fleetwood RV, we're confident in our products and don't hesitate to stand behind them. Your new Fleetwood not only comes with one of the industry's most comprehensive warranties, but that warranty is fully transferable during the full 24 months of warranty coverage (excludes Park Trailers).

National Coverage

Have a question about your new Fleetwood? We've got it covered—with the nation's largest trained dealer networks—ready to provide you with the services you need to make owning your RV enjoyable. Over 1,100 Fleetwood dealers throughout the U.S. and Canada are just a phone call away.



An Extra Thank You

Ask your dealer about your Thousand Trails complimentary 30-day membership certificate. It's your chance to get going in your new RV and enjoy some scenic camping, plus our way of thanking you again for your purchase of a Fleetwood RV. Happy (Thousand) Trails!



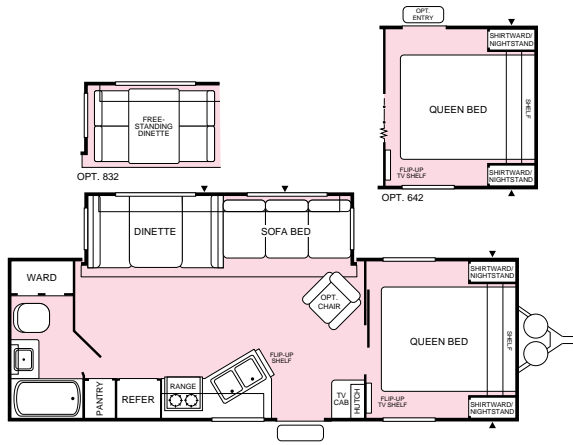
24-Hour Roadside Assistance Program

Complimentary, first-year roadside assistance coverage wherever you travel in the U.S. and Canada is available with every Fleetwood RV towable. Quality emergency road service from a nationwide network of service providers can help you with emergency towing, flat tire and lock-out assistance. Be sure to ask your dealer about this valuable program. All you need to do is sign up! After the first, free year, you can continue the service for many more years at a very reasonable cost.

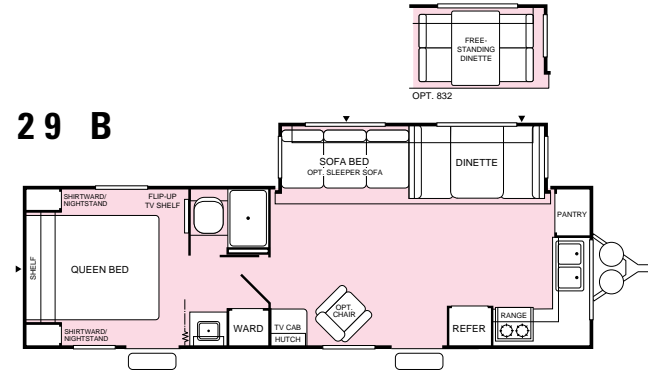
See the 2000 Owner's Manual for complete details. Park Trailer has full one-year warranty. See dealer for details.

Wilderness GL Floor Plans

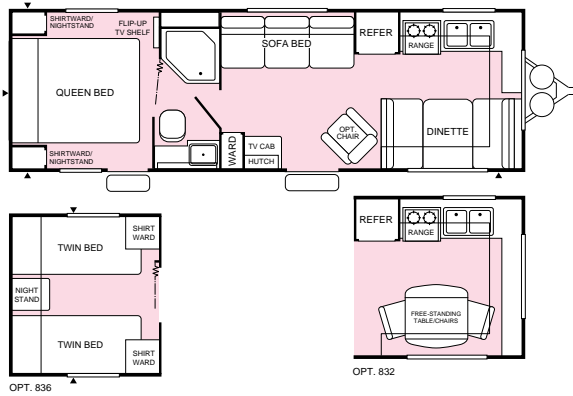
26 H



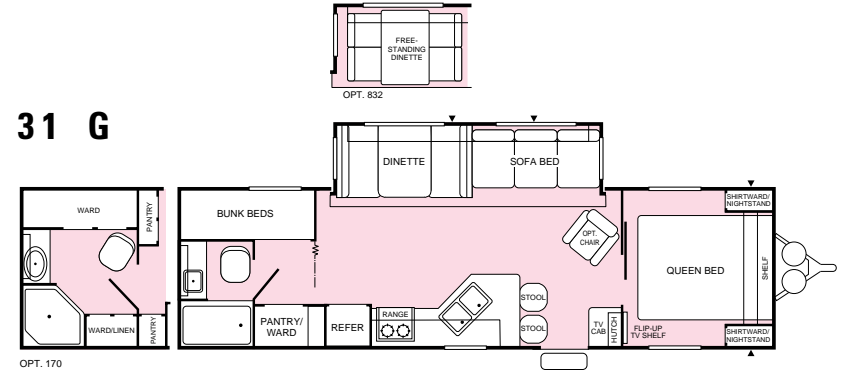
29 B



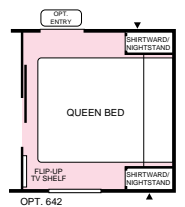
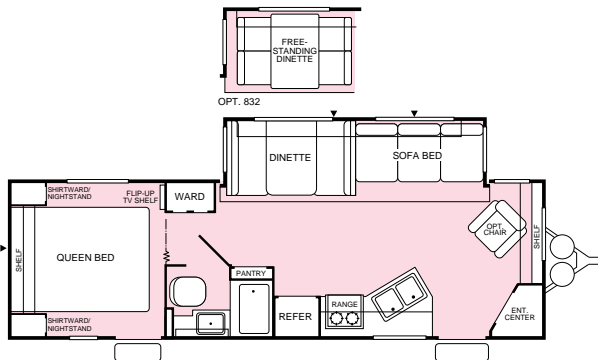
26 T



31 G



27 F



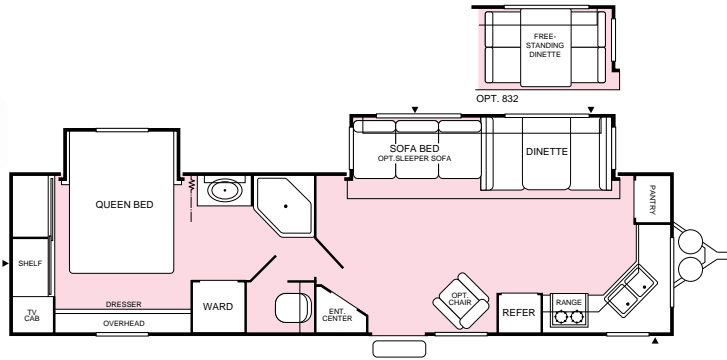
▲ = Exterior Storage

Wilderness GL Floor Plans

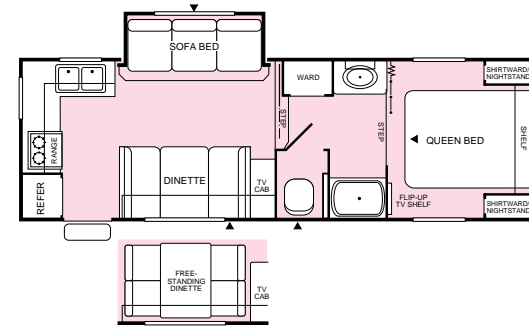
Travel Trailers & Fifth Wheels

new!

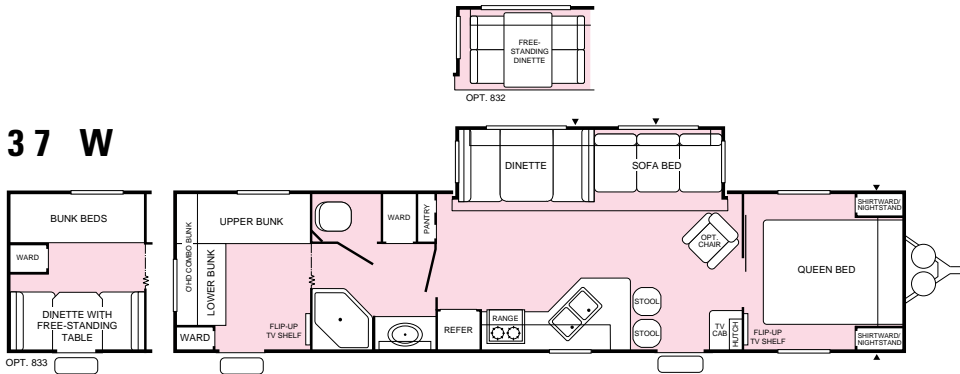
34 P



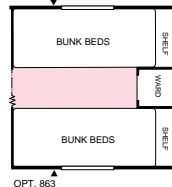
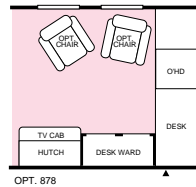
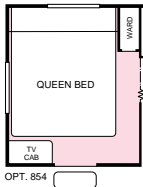
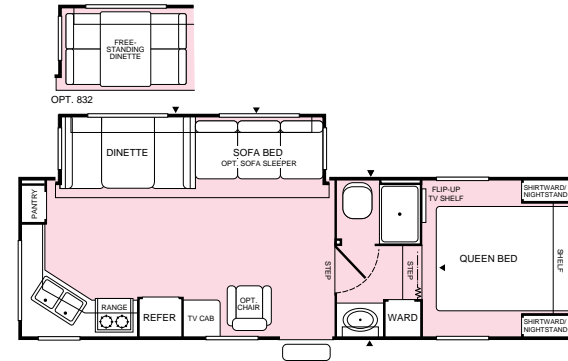
24 5P
fifth wheel



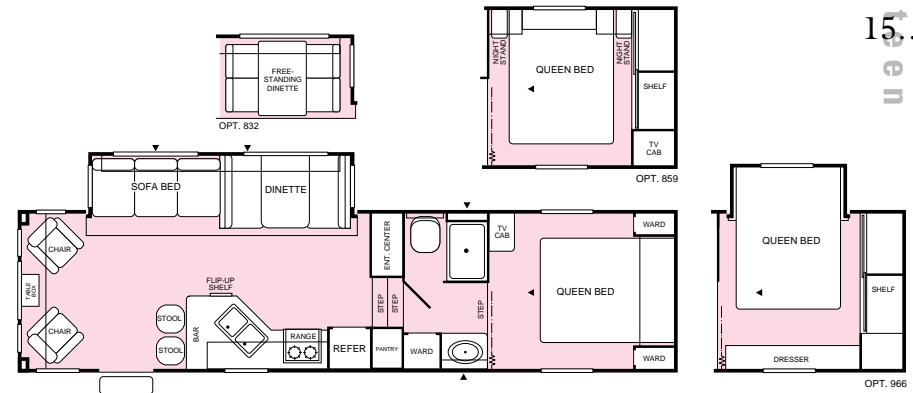
37 W



27 5J
fifth wheel



30 5G
fifth wheel

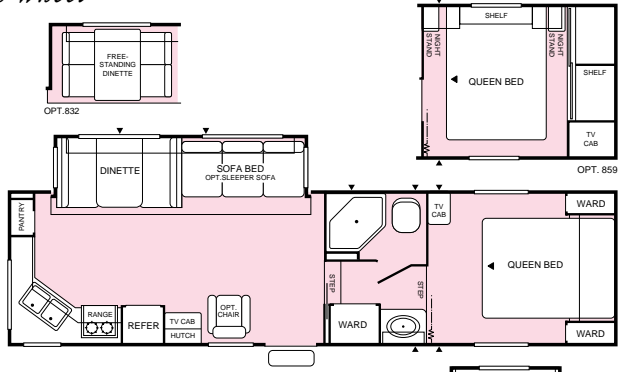


▲ = Exterior Storage

Wilderness GL Floor Plans

Fifth Wheels

30 5X
fifth wheel



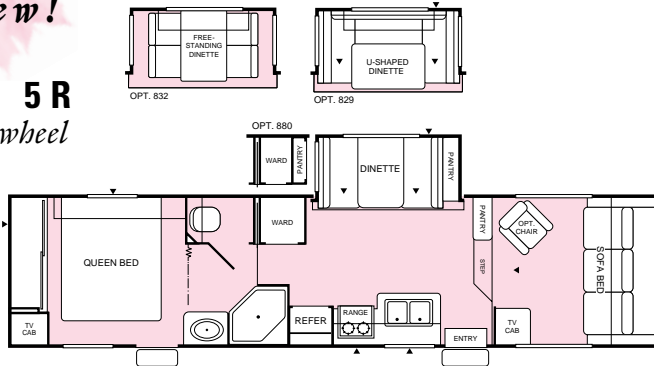
OPT. 832

OPT. 859

OPT. 966

new!

31 5R
fifth wheel



OPT. 832

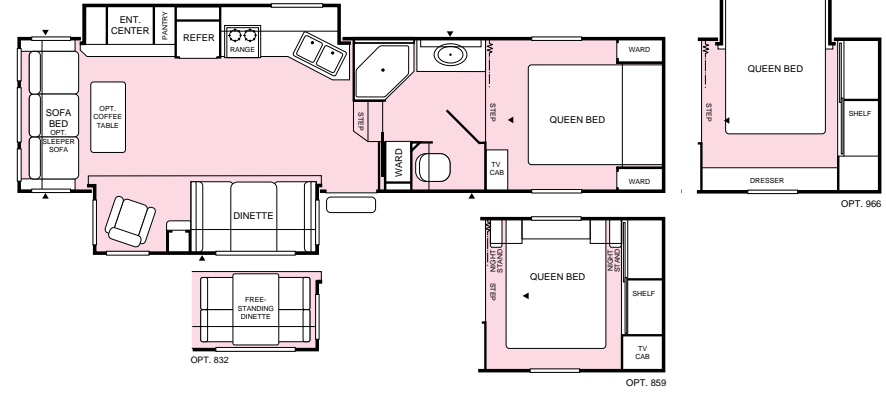
OPT. 829

OPT. 880

OPT. 966

▲ = Exterior Storage

32 5D
fifth wheel



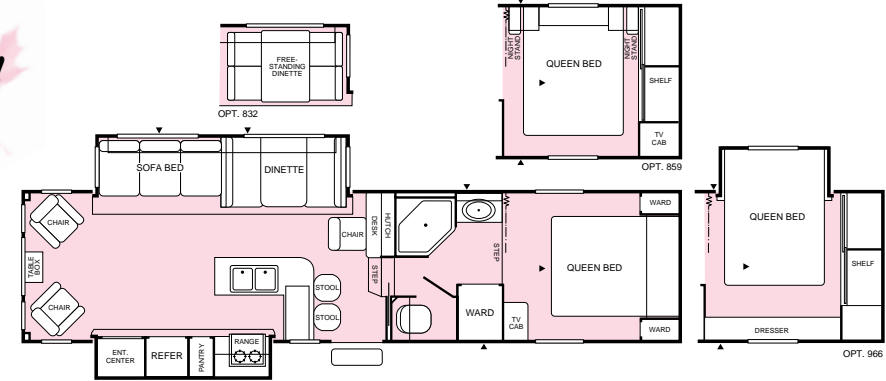
OPT. 832

OPT. 859

OPT. 966

new!

32 5F
fifth wheel

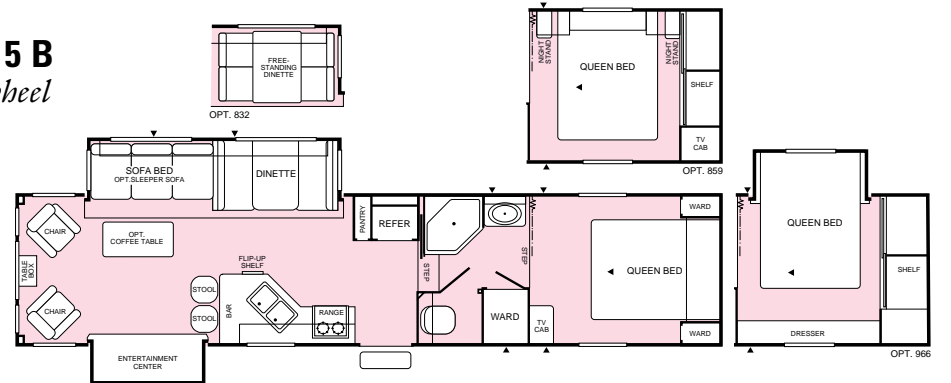


OPT. 832

OPT. 859

OPT. 966

34 5B
fifth wheel



OPT. 832

OPT. 859

OPT. 966

Wilderness GL Standard Features

Exterior

- Smooth Fiberglass Sidewalls
- Construction Steel Channel, or I-Beam Cambered Chassis
- Prewired for DSS Satellite
- Tandem Axle w/4-Wheel Electric Brakes
- Radial Ply Tires w/White Spoke Wheels
- Rear Bumper w/Sewer Hose Carrier
- Retractable Non-Skid Double or Triple Entry Step
- Radius Locking, Insulated Luggage Doors w/Finger Pulls
- Front Radiused Rockguard Awning (Select Models)
- One-Piece Seamless Rubber Roof
- Engineered Radius Roof Truss Rafters
- R-7 Blanket Fiberglass Insulation
- 30" Wide Main Entry Door w/Window (Most Models)
- Flush Combo Entry Latch/Dead Bolt Lock
- Reinforced Screen Door w/Lock Shield & Kick Panel
- Tinted Windows
- LPG Tank Cover (Travel Trailers)
- Skylight Roof Vents
- A&E® Patio Awning
- Convenience Lighting—Hitch and Roadside Utility
- Wall-Switched, Doorside Patio Light
- Welded, Dual Battery Rack (Travel Trailers)
- Waste Tank Single Point Termination Valve
- Sonic-Welded, Automotive-Style Clearance Lights
- G.F.I. Protected 120V Duplex Receptacle

Interior

- Quality Furniture by Flexsteel®
- Decor-Coordinated Designer Interiors
- Oak Frame Cabinet Doors w/Oak Raised Inserts
- Face Frame Cabinet Construction
- Overhead Dinette Storage Cabinet
- Box-Wrapped Valance Window Treatment w/Side Curtains
- Living Area & Bedroom Carpet w/Foam Padding
- Innerspring Mattresses
- Decor-Coordinated Bedspread w/Pillow Shams

- Wall-Mounted 120V Decor Light
- Ceiling-Mounted 120V Decor Light
- Wainscot Molding
- Miniblinds Throughout (Except Bunks)
- Curtains in Bunk Areas

Galley

- Double Bowl Porcelain Sink
- Single Lever Residential Faucet
- High Pressure Laminate Countertop
- Overhead Storage Cabinet Above Sink
- Pantry Cabinet w/Shelves (Most Models)
- 120V Appliance Receptacle at Countertop
- Spice Shelf
- Large Pot/Pan Drawer (Most Models)
- Knife Block
- Trash Bag Holder

Bath

- Large Lavy Bowl
- Medicine Cabinet w/Mirrored Oak Door
- Foot Operated Fresh Water Flush Toilet
- One-Piece ABS Tub Walls
- 12V Power Roof Exhaust Vent
- Shower Curtain
- G.F.I. Protected 120V Duplex Receptacle
- Wall-Switched Ceiling Light
- Skylight in Tub/Shower

Appliances/Equipment

- Electronic Microwave Oven w/Turntable
- Dometic® Double Door LP/Electric Refrigerator
- MagicChef® 3-Burner, High-Output Range w/Oven
- Range Hood w/12V Light and Exhaust Fan
- Wall-Mounted Systems Monitor Panel
- LP/D.S.I. Fast Recovery Water Heater, 6-Gallon Water Heater Bypass
- hydroflame® Forced Air, D.S.I. Furnace w/Thermostat
- In-Floor Rigid Heat Ducting
- In-Ceiling Rigid Air Conditioning Ducting

- Rechargeable Flashlight
- Dual 7-Gallon LPG Tanks w/Regulator & Auto-Changeover
- Smoke Detector
- Fire Extinguisher
- TV Antenna
- Freeze-Resistant Water Lines
- LPG Leak Detector

Electrical

- Electronic Converter w/Built-in Battery Charger
- 120V Central Electrical Panel
- 120V Duplex Receptacles Throughout
- 120V Ground Fault Circuit Protection
- 120V Patio Receptacle
- Wall-Switched Interior Lights
- Prewired for Roof Air Conditioner
- AM/FM Cassette Stereo
- Cable TV Hook-Up
- 12V Power Jack (Fifth Wheels Only)

Wilderness GL Popular Options

- Coleman® Ducted Central Air Conditioning
- Free-Standing Swivel Rocker
- Water Purifier
- Plank Flooring
- 120V/LP/D.S.I. Fast Recovery Water Heater
- Spare Tire
- AM/FM CD Player

*Not all models include all features.
See your dealer for complete details.*

Wilderness GL Specifications

Travel Trailers & Fifth Wheels

| Wilderness GL Models | 26 H | 26 T | 27 F | 29 B | 31 G | 34 P | 37 W | 24 5P |
|--|---------------------|---------------------|---------------------|---------------------|---------------------|---------------------|---------------------|---------------------|
| GVWR (Gross Vehicle Weight Rating) | 8,300 | 7,300 | 8,600 | 8,800 | 9,100 | 10,100 | 10,400 | 8,100 |
| Gross Dry Weight ¹ | 6,180 | 5,200 | 6,430 | 6,610 | 6,830 | 7,650 | 7,900 | 6,230 |
| Carrying Capacity ² | 2,120 | 2,100 | 2,170 | 2,190 | 2,270 | 2,450 | 2,500 | 1,870 |
| Hitch Dry Weight ¹ | 670 | 660 | 870 | 940 | 860 | 1,020 | 1,130 | 1,020 |
| Dry Axle Weight ¹ | 5,570 | 4,540 | 5,560 | 5,670 | 5,970 | 6,630 | 6,770 | 5,210 |
| Length ³ | 27' 8" | 28' 2" | 29' 2" | 30' 6" | 31' 10" | 35' 0" | 38' 5" | 25' 2" |
| Width ⁶ | 8' 0" | 8' 0" | 8' 0" | 8' 0" | 8' 0" | 8' 0" | 8' 0" | 8' 0" |
| Height ⁴ | 9' 6" | 9' 0" | 9' 6" | 9' 6" | 9' 6" | 9' 6" | 9' 6" | 11' 7" |
| Tires – Size (Radials) | ST225/ 75R 15(C) | ST205/ 75R 15(C) | ST225/ 75R 15(C) | ST225/ 75R 15(C) | ST225/ 75R 15(C) | ST225/ 75R 15(D) | ST225/ 75R 15(D) | ST205/ 75R 15(C) |
| Fresh Water Tank ⁵ – gal. | 40 | 40 | 40 | 40 | 40 | 40 | 40 | 40 |
| Gray Water Holding Tank ⁵ – gal. | 40 | 40 | 40 | 40/21 | 40 | 40/21 | 40 | 40/21 |
| Black Water Holding Tank ⁵ – gal. | 40 | 40 | 40 | 40 | 40 | 40 | 40 | 40 |
| LPG Capacity – gal. | 14 | 14 | 14 | 14 | 14 | 14 | 14 | 14 |
| Bed Size – Standard | 60"x75" Queen | 60"x75" Queen | 60"x75" Queen | 60"x75" Queen | 60"x75" Queen | 60"x75" Queen | 60"x75" Queen | 60"x75" Queen |
| Bed Size – Option | | 32"x75" Twin (2) | | | 29"x74" Bunk (2) | | 29"x76" Bunk (2) | 60"x75" Queen |
| Maximum Sleeping Capacity | 6 | 6 | 6 | 6 | 8 | 6 | 11 | 6 |
| Wilderness GL Models (cont.) | 27 5J | 30 5G | 30 5X | 31 5R | 32 5D | 32 5F | 34 5B | |
| GVWR (Gross Vehicle Weight Rating) | 9,400 | 11,300 | 10,900 | 12,100 | 12,100 | 12,300 | 13,600 | |
| Gross Dry Weight ¹ | 7,250 | 8,100 | 7,830 | 8,580 | 8,890 | 8,810 | 9,650 | |
| Carrying Capacity ² | 2,150 | 3,200 | 3,070 | 3,520 | 3,210 | 3,490 | 3,950 | |
| Hitch Dry Weight ¹ | 1,220 | 1,590 | 1,590 | 1,720 | 1,820 | 1,690 | 1,920 | |
| Dry Axle Weight ¹ | 6,030 | 6,510 | 6,240 | 6,860 | 7,070 | 7,120 | 7,730 | |
| Length ³ | 27' 10" | 32' 0" | 31' 3" | 33' 4" | 32' 11" | 33' 10" | 35' 10" | |
| Width ⁶ | 8' 0" | 8' 0" | 8' 0" | 8' 0" | 8' 0" | 8' 0" | 8' 0" | |
| Height ⁴ | 11' 7" | 11' 7" | 11' 7" | 11' 7" | 11' 9" | 11' 9" | 11' 9" | |
| Tires – Size (Radials) | ST225/ 75R 15(C) | ST225/ 75R 15(D) | ST225/ 75R 15(C) | LT215/ 85R 16(E) | ST225/ 75R 15(D) | LT225/ 85R 16(E) | LT235/ 85R 16(E) | |
| Fresh Water Tank ⁵ – gal. | 40 | 50 | 50 | 50 | 50 | 50 | 50 | |
| Gray Water Holding Tank ⁵ – gal. | 40/21 | 40 | 40/21 | 40 | 40 | 40 | 40/21 | |
| Black Water Holding Tank ⁵ – gal. | 40 | 40 | 40 | 40 | 40 | 40 | 40 | |
| LPG Capacity – gal. | 14 | 14 | 14 | 14 | 14 | 14 | 14 | |
| Bed Size – Standard | 60"x75" Queen | 60"x80" Queen | 60"x80" Queen | 60"x75" Queen | 60"x80" Queen | 60"x80" Queen | 60"x80" Queen | |
| Bed Size – Option | | 60"x75" Queen | 60"x75" Queen | 60"x75" Queen | 60"x75" Queen | 60"x75" Queen | 60"x75" Queen | |
| Maximum Sleeping Capacity | 6 | 6 | 6 | 6 | 6 | 6 | 6 | |

¹ All dry weights are based on standard model features and do not include optional features or equipment.

² Carrying capacity is determined by subtracting Gross Dry Weight from GVWR. Carrying capacity includes all fluids, optional equipment and personal cargo.

³ Trailer includes 3'6" for hitch, fifth wheel includes pin box.

⁴ Add 12" if equipped with optional roof air conditioner.

⁵ Approximate gallons.

⁶ Add 3" for awning.

Wilderness Features and Benefits



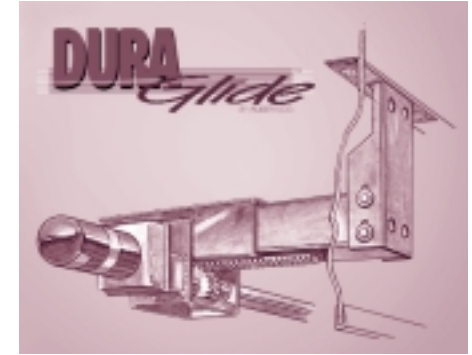
Name Brand Furniture and Appliances

Flexsteel®, Magic Chef® and Dometic® are just a few of the respected brand names you will find in your Wilderness to insure comfort, quality, and reliability.



Solid Construction

Whether it's steel, aluminum, fiberglass or wood, we always carefully choose the most appropriate materials for use in our towables.



Dura-Glide™ Slide-Room System

Our exclusive Dura-Glide™ System is the most reliable and durable available. Powered by an electric motor, its simple rack-and-pinion mechanism assures smooth, even, tooth-by-tooth operation.



Cabinet Storage Space

Wilderness' kitchen cabinets are residential in size—deep enough and wide enough to accommodate full-size dishes and tall enough for large cereal boxes.



Water Purifier

Pure drinking water is an important concern when you travel in your Wilderness. To ensure a good supply have your Wilderness equipped with this optional water purifier.



Centralized Water Area

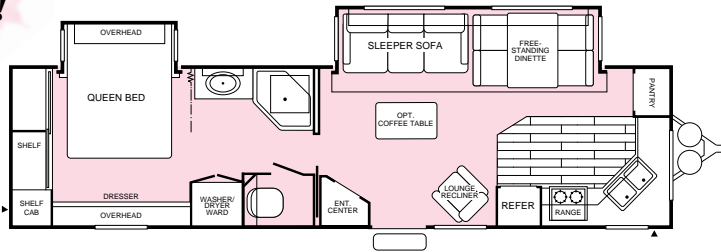
The water connections have been grouped together to make hooking up your RV easy and quick.

Wilderness GLX Floor Plans

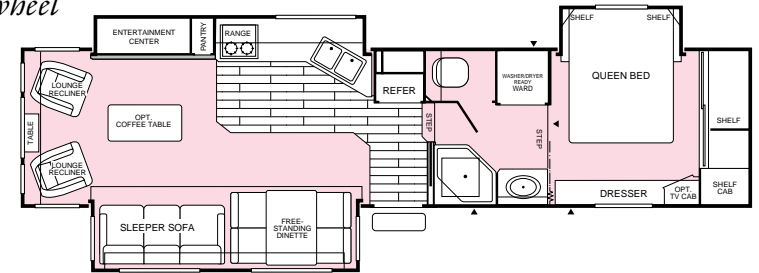
Travel Trailers & Fifth Wheels

new!

34 P

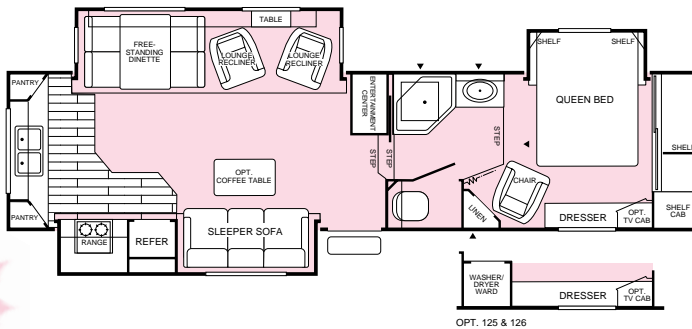


34 5L
fifth wheel

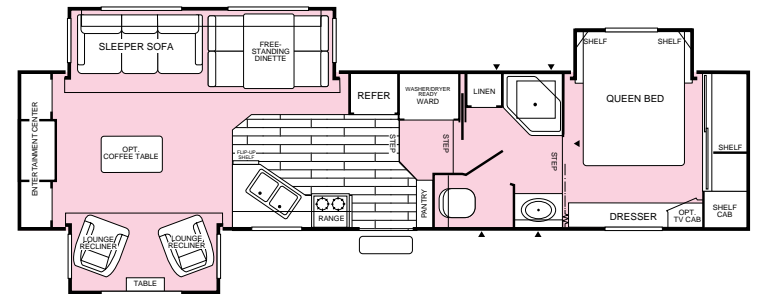


33 5M
fifth wheel

new!



35 5Y
fifth wheel



▲ = Exterior Storage

Wilderness GLX Standard Features & Specifications

Travel Trailers & Fifth Wheels

Exterior

- Smooth Fiberglass Exterior Sidewalls
- Fiberglass Front Cap
- Aluminum Frame Construction
- Dual Battery Compartment or Rack
- Integrated Tail Lights
- One-Piece Rubber Roof
- Fiberglass Insulation
- 30" Wide Radiused Main Entry Door
- Flush Mount, Combo Entry Latch/Dead Bolt Lock
- Convenience Lighting—Hitch/LP Tanks/Roadside
- High Strength Welded I-Beam, Cambered Chassis
- Exterior Shower
- Polyethylene Wheel Well Skirts (Fifth Wheels Only)
- Locking, Insulated, Radiused Luggage Doors w/Finger Pulls
- Large, Solar-Reflective White Framed Radiused Windows (Torque & Slider)
- 12V Power Jack (Fifth Wheels Only)
- Ladder
- Shock Absorbers
- In-Chassis Spare Tire Carrier
- Pass Through Exterior Storage (Fifth Wheels Only)
- Fully Enclosed, Heated Holding Tanks w/Remote Valve

- Power Landing Gear (Fifth Wheels Only)
- A&E® Patio Awning
- Large 12V Doorside Mounted Security Light

Interior

- Oak Framed Cabinet Doors w/Oak Raised Inserts
- Deluxe Carpet w/Foam Pad in Living Room and Bedroom
- Upgraded Innerspring Mattress
- Bed Top Lift Mechanism to Storage Area (Queen Bed)
- Oak Dinette Table w/Four Chairs
- Quality Flexsteel® Sleeper Sofa
- Free-Standing Flexsteel® Lounge Recliner
- Decor-Coordinated Bedspread w/Pillow Shams
- 120V Ceiling-Mount Decor Light in Dining Area
- 120V Wall-Mount Decor Lights in Living Area
- Designer Window Treatments with Miniblinds
- Adjustable Reading Lights Over Beds & Chairs
- Magazine Rack
- Knife Rack
- Plank Flooring at Entry

Appliances/Equipment

- Large Dometic® Double Door LP/Electric Refrigerator
- Raised Panel Refrigerator Door
- 3-Burner, High-Output Range w/Oven
- Wall-Mounted Systems Monitor Panel
- LP/120V D.S.I. Water Heater—10-Gallon
- hydroflame® D.S.I. Furnace w/Thermostat
- In-Floor Rigid Heat Ducting
- In-Ceiling Rigid Air Conditioning Ducting
- Deluxe AM/FM Stereo CD Player w/Speakers
- Park Cable TV Hook-up Connection
- Dual 7-Gallon LPG Tanks w/Sight Gauge & Auto-Changeover
- Electronic Microwave Oven w/Turntable
- Smoke Detector
- Fire Extinguisher
- TV Antenna
- Satellite Dish Ready
- Phone Jack
- Washer/Dryer Ready (Most Models)
- Rechargeable Flashlight

Galley

- Spice Tray
- Plank Flooring
- Knife Block

Bath

- Large Medicine Cabinet w/Mirrored Doors
- One-Piece ABS Tub/Shower Walls
- Glass Tub Enclosure
- Bath Skylight
- 12V Power Roof Exhaust Vent
- Fresh Water, Foot-Operated Flush Toilet
- Wall-Switched Ceiling Light
- 3-Bulb Vanity Light

Electrical

- 40-Amp, 12V All Electronic Converter w/Battery Charger
- 120V Central Electrical Panel
- 120V Ground Fault Circuit Protection
- 120V Patio Receptacle
- Wall-Switched Interior Lights
- Fluorescent Lights (Galley)

Wilderness GLX Popular Options

- Coleman® Ducted Central Air Conditioning
- Water Purifier
- Generator Ready
- Double Insulation in Ceiling and Floor
- Full Entertainment Center w/TV, VCR & CD Player w/Changer
- Day/Night Shades Throughout
- High Gloss Gel Coat Fiberglass Exterior

Not all models include all features.
See your dealer for complete details.

| Wilderness GLX Models | 34 P | 33 5M | 34 5L | 35 5T |
|--|---------------------|----------------------|----------------------|----------------------|
| GVWR (Gross Vehicle Weight Rating) | 10,400 | 13,100 | 13,700 | 13,600 |
| Gross Dry Weight ¹ | 7,930 | 10,180 | 10,550 | 10,430 |
| Carrying Capacity ² | 2,470 | 2,920 | 3,150 | 3,170 |
| Hitch Dry Weight ¹ | 1,100 | 1,850 | 2,030 | 2,160 |
| Dry Axle Weight ¹ | 6,830 | 8,330 | 8,520 | 8,270 |
| Length ³ | 34' 10" | 34' 7" | 35' 10" | 36' 3" |
| Width ⁶ | 8' 0" | 8' 0" | 8' 0" | 8' 0" |
| Height ⁴ | 9' 6" | 11' 9" | 11' 9" | 11' 9" |
| Tires – Size (Radials) | ST225/ 75R 15(D) | LT 235/ 85R 16(E) | LT 235/ 85R 16(E) | LT 235/ 85R 16(E) |
| Fresh Water Tank ⁵ – gal. | 40 | 60 | 60 | 60 |
| Gray Water Holding Tank ⁵ – gal. | 40/21 | 55/21 | 40/40 | 40/21 |
| Black Water Holding Tank ⁵ – gal. | 40 | 40 | 40 | 40 |
| LPG Capacity – gal. | 14 | 14 | 14 | 14 |
| Bed Size – Standard | 60"x 75" Queen | 60"x 75" Queen | 60"x 75" Queen | 60"x 75" Queen |
| Maximum Sleeping Capacity | 4 | 4 | 4 | 4 |

¹ All dry weights are based on standard model features and do not include optional features or equipment.

² Carrying capacity is determined by subtracting Gross Dry Weight from GVWR. Carrying capacity includes all fluids, optional equipment and personal cargo.

³ Trailer includes 3'6" for hitch, fifth wheel includes pin box.

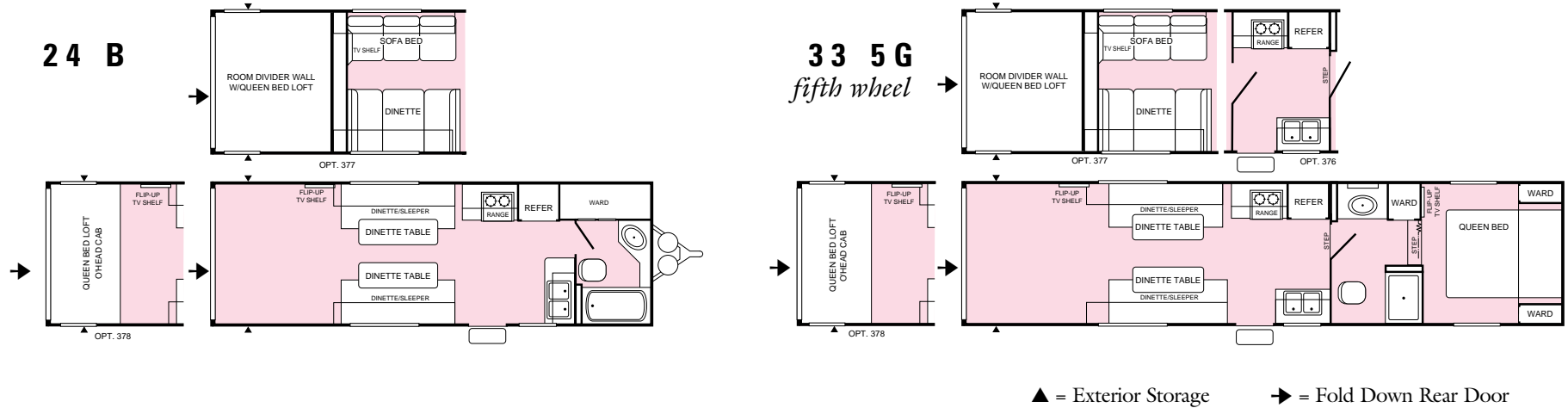
⁴ Add 12" if equipped with optional roof air conditioner.

⁵ Approximate gallons.

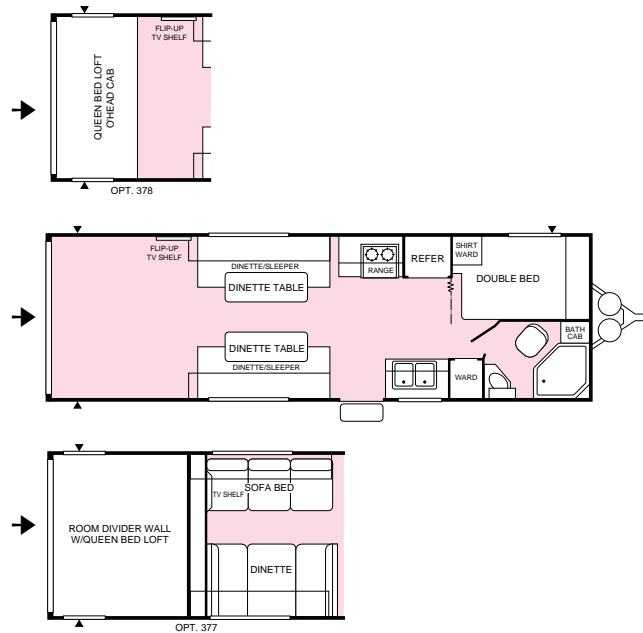
⁶ Add 3" for awning.

Wilderness SUT Floor Plans & Specifications

Travel Trailers & Fifth Wheel



26 A



| Wilderness SUT Models | 24 B | 26 A | 33 5G |
|--|---------------------------|---------------------------|---------------------------|
| GVWR (Gross Vehicle Weight Rating) | 9,500 | 9,600 | 11,600 |
| Gross Dry Weight ¹ | 6,010 | 6,150 | 7,480 |
| Carrying Capacity ² | 3,490 | 3,450 | 4,120 |
| Hitch Dry Weight ¹ | 820 | 920 | 1,850 |
| Dry Axle Weight | 5,190 | 5,230 | 5,630 |
| Overall Length ³ | 27' 10" | 29' 7" | 33' 7" |
| Storage Length – Standard | 13' 4" | 13' 7" | 14' 7" |
| Storage Length – w/Optional Wall | 7' 1" | 7' 1" | 7' 1" |
| Width ⁶ | 8' 5" | 8' 5" | 8' 5" |
| Height ⁴ | 11' 3" | 11' 3" | 11' 3" |
| Tires – Size (Radials) | ST225/75R 15(D) | ST225/75R 15(D) | ST225/75R 15(D) |
| Fresh Water Tank ⁵ – gal. | 50 | 50 | 50 |
| Gray Water Holding Tank ⁵ – gal. | 40 | 40 | 40 |
| Black Water Holding Tank ⁵ – gal. | 40 | 40 | 40 |
| LPG Capacity – gal. | 14 | 14 | 14 |
| Bed Size – Standard | 38" x 76" Dinette/Sleeper | 49" x 78" Double | 60" x 80" Queen |
| Bed Size – Option | 60" x 93" Queen Loft | 38" x 76" Dinette/Sleeper | 38" x 76" Dinette/Sleeper |
| Maximum Sleeping Capacity | 6 | 8 | 8 |

¹ All dry weights are based on standard model features and do not include optional features or equipment.

² Carrying capacity is determined by subtracting Gross Dry Weight from GVWR. Carrying capacity includes all fluids, optional equipment and personal cargo.

³ Trailer includes 3'6" for hitch, fifth wheel includes pin box.

⁴ Add 12" if equipped with optional roof air conditioner.

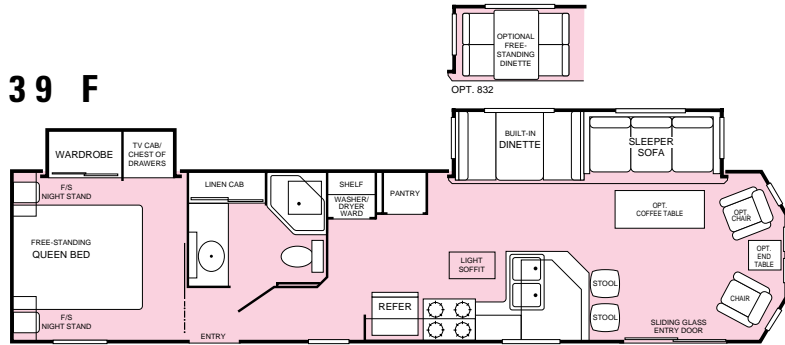
⁵ Approximate gallons.

⁶ Add 3" for awning.

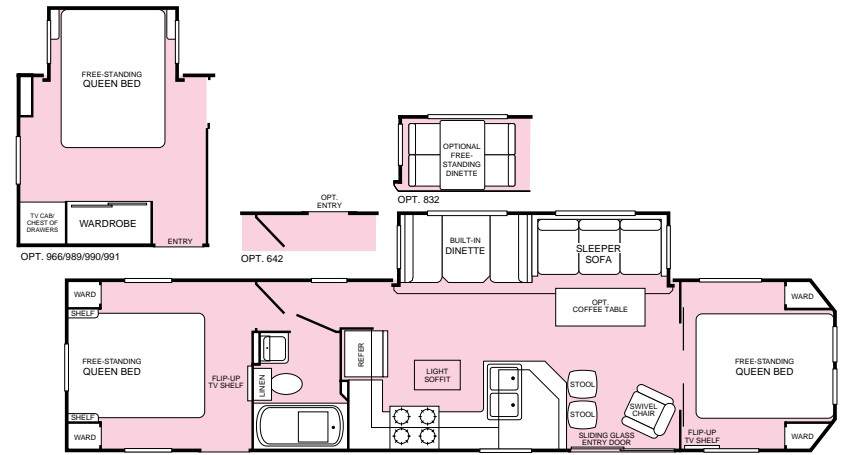
Wilderness Park Floor Plans & Specifications

Recreational Park Trailers

39 F

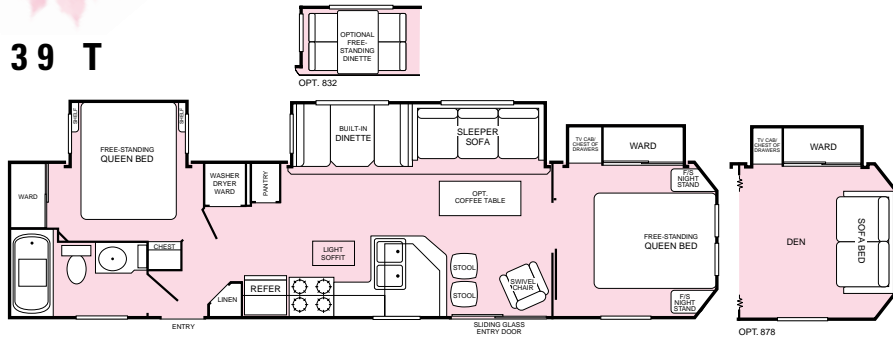


39 W



new!

39 T



OPT. 878

| Wilderness Park Models | 39 F | 39 T | 39 W |
|------------------------------------|-----------------|-----------------|------------------|
| GVWR (Gross Vehicle Weight Rating) | 11,000 | 11,000 | 10,800 |
| Gross Dry Weight ¹ | 8,380 | 8,760 | 8,440 |
| Hitch Dry Weight ¹ | 840 | 930 | 850 |
| Overall Length ² | 39' 10" | 39' 10" | 39' 10" |
| Body Length | 37' 3" | 37' 3" | 37' 3" |
| Width | 8' 6" | 8' 6" | 8' 6" |
| Height ³ | 10' 2" | 10' 2" | 10' 2" |
| Tires – Size (Radials) | ST225/75R 15 | ST225/75R 15 | ST225/75R 15 |
| Tire Load Range | D | D | D |
| Appliance LPG Capacity – gal. | 20 (Optional) | 20 (Optional) | 20 (Optional) |
| Bed Size – Standard | 60" x 80" Queen | 60" x 80" Queen | 60" x 80" Queen |
| Bed Size – Option | N/A | N/A | 54" x 75" Double |
| Maximum Sleeping Capacity | 6 | 8 | 9 |

¹ All dry weights are based on standard model features and do not include optional features or equipment.

² Includes 2'6" for hitch.

³ Add 12" if equipped with optional roof air conditioner.

N/A = Not available at time of printing.

FLEETWOOD RV AND MOTOR SPORTS: A WINNING TEAM

At Fleetwood RV, we've got plenty of vehicles on the road that we're proud of. But did you know we also have some special drivers we like boasting about, too? Like Winston Cup driver Dale Jarrett and the Robert Yates Racing Team. For years, Fleetwood RV has been a proud sponsor of these exciting professional racers and we invite you to take your part in the thrill of live racing action. Look for Fleetwood RV as the official Recreational Vehicle of the following race tracks to make the most of your day at the race: California Speedway, Daytona International Speedway, Phoenix International Raceway and Talladega Superspeedway.



IMPORTANT—PLEASE READ:

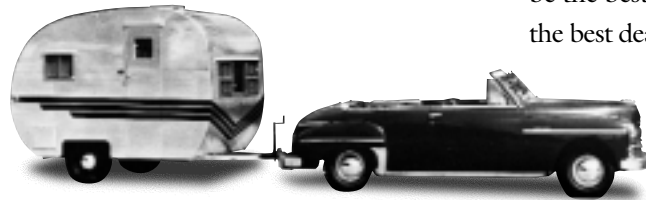
Product information and photography included in this brochure were as accurate as possible at the time of publication. Subsequent refinements may be evident in the actual product. Prices and specifications are subject to change without notice. Selected color items shown in the photographs are not part of the product unless specified. All liquid capacities are approximate and dimensions are nominal. Some models may not be available from all manufacturing plants. Floor plans are subject to change during the model year. Contact your dealer for complete details.

FLEETWOOD RV FOR 50 YEARS

Dear Friend,

This year is a very significant milestone for all of us at Fleetwood RV. Not only is this our new millennium model year, it is also the Golden Anniversary of our company. For 50 years, we have designed and built RVs so that our customers can travel the many beautiful highways and byways of America in comfort.

When Fleetwood began in 1950, we could only dream that 50 years later we would be the world's largest RV manufacturer, with



Fleetwood Sporter Trailer (circa 1950)



the most popular, highly-recognized RVs on the road. One thing's for sure—none of us could have done it alone. At Fleetwood, we have a team of the finest craftsmen, designers, engineers, and product line professionals—over 8,000 caring individuals from the plant floor to me—all working to be the best we can for you. We add to this the best dealer partners in the world so that you'll feel confident in your Fleetwood every mile of every stretch of road you travel.

Your local dealer is: Colton RV & Marine
3122 Niagara Falls Blvd.
North Tonawanda, NY 14120
(716) 694-0188
www.ColtonRV.com

CONTINUING THE COMMITMENT

For all of us at Fleetwood this first 50 years has been an exciting journey, from the early days of our original travel trailer and motor home prototypes to our current luxury models sporting the 50th Anniversary logo. We thank you for making us the great company we are today. Building the best product we can for your enjoyment is the key to our success, and you have my promise that we'll be here when you need us—for the next 50 years.

See you on the road!

Glenn Kummer
Chairman and CEO
Fleetwood Enterprises, Inc.

Colton RV
489 Bushkill Plaza LN #9665
Wind Gap, PA 18091
(610) 863-5239
www.ColtonRV.com

If your local dealer is not indicated, write to the address below,
call us toll-free 24-hours-a-day at

1-800-444-4905

or visit our website at www.fleetwood.com

FLEETWOOD® RV

America's Favorite Recreational Vehicle

Second Edition
Inventory Control No. 280002

© 1999 Fleetwood Enterprises, Inc.
Litho in USA 12/99

Fleetwood Enterprises, Inc. • RV Marketing • P.O. Box 7638 • Riverside, CA 92513-7638