

# GEO PRO

PROVIDING OUTDOOR FUN SINCE 1974.



**GEO PRO**  
TRAVEL TRAILERS

# Geo Pro

**THE ROCKWOOD GEO PRO LINE OF TRAILERS ARE FOR THOSE CAMPERS THAT HAVE CHOSEN TO DRIVE TODAY'S MORE FUEL EFFICIENT AND SMALLER SUV'S.**

With floor plan weights within these vehicles towing capability, Geo Pro is an exciting way to go camping using the vehicle you drive every day.

Geo Pro is now offering more standards and options than anyone in its class. Standard on most models include a AM/FM stereo with Bluetooth and a USB port, a 12Volt TV with a built in DVD Player, a rear ladder, a WIFI Ranger booster with available WIFI connectivity, a roof mount solar panel with a 1000 Watt converter, a Shower Miser Water Saver, plus many more standard features. Options include a 13,500 BTU AC, a tongue mount bike rack, an off road package that includes a lift kit and 15" Mud Rover radial tires and other great features.





G16BH



G16BH



G19FBS

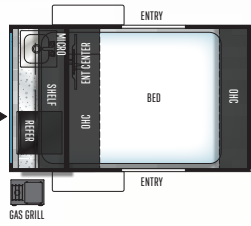
# Modern Amenities & Styling

**THE FLOOR PLAN YOU WANT IN THE SIZE YOU NEED.** We have custom designed our trailers with the best in style and amenities while keeping your towing needs in mind. Quality craftsmanship and attention to detail have been put into our Geo Pro travel trailers, all with you in mind. The well equipped Geo Pro G16TH is our very first toyhauler and allows you take your toys with you and get off the beaten path.

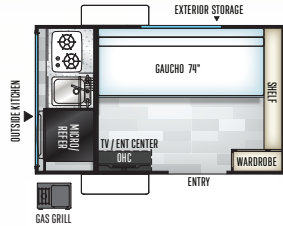


G16TH



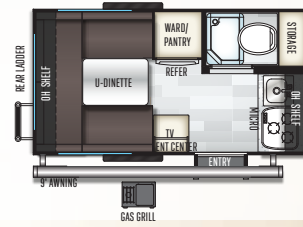


G12RK

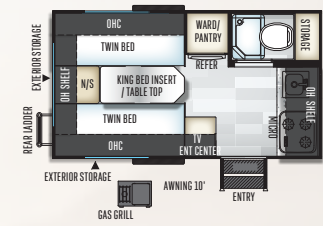


G12SRK

NEW

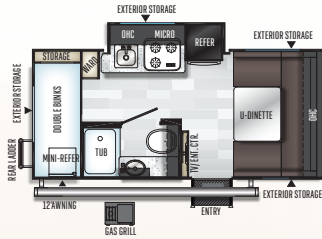


G14FK

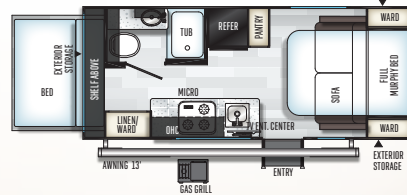


G15TB

NEW

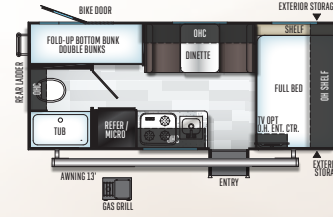


G16BH



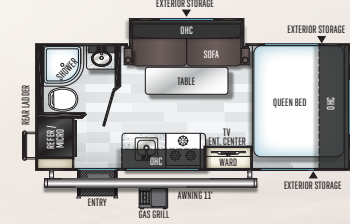
G17PR

NEW

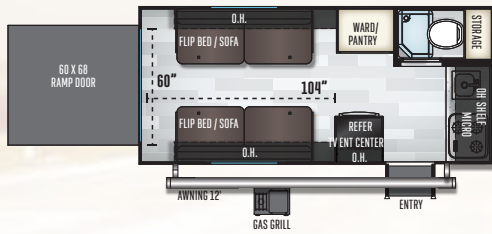


G19BH

NEW

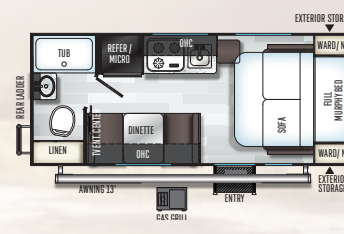


G19FBS

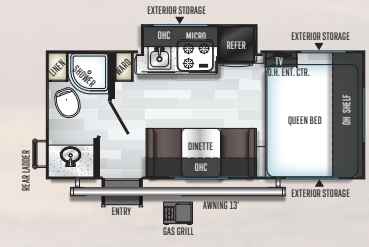


G16TH

NEW



G19FD



G19QB

NEW



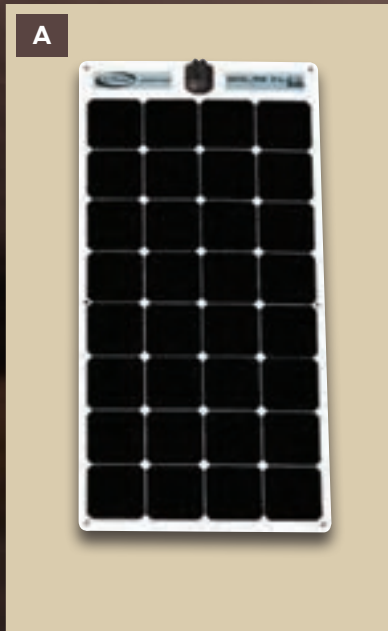
MODEL NUMBER	G12RK	G12SRK	G14FK	G15TB	G16BH	G16TH	G17PR	G19FD	G19FBS	G19BH	G19QB
UVW	1164	1763	2259	2483	2993	2842	3161	2829	3075	3088	3144
BASE DRY HITCH WEIGHT	162	258	331	366	420	530	452	390	413	360	413
CCC	798	1135	712	1383	927	1688	791	1061	838	772	769
LENGTH (HITCH TO BUMPER)	11' 4"	12'	14' 1"	15' 10"	18' 4"	18' 4"	20'	20'	20'	20'	20'
WIDTH	76"	84"	76"	88"	88"	88"	88"	88"	88"	88"	88"
HEIGHT W/ A/C	90"	90"	112"	115"	115"	117"	115"	115"	115"	115"	115"
INTERIOR HEIGHT	58"	58"	78"	78"	78"	78"	78"	78"	78"	78"	78"
FRESH WATER CAPACITY	20 gal	20 gal	26 gal	37 gal	37 gal	37 gal	37 gal	37 gal	37 gal	37 gal	37 gal
GRAY WATER CAPACITY	6 gal	6 gal	12 gal	12 gal	30 gal	12 gal	30 gal	30 gal	30 gal	30 gal	30 gal
BLACK WATER CAPACITY	NA	NA	12 gal	12 gal	30 gal	12 gal	30 gal	30 gal	30 gal	30 gal	30 gal

The Unloaded Vehicle Weight (UVW) listed represents the weight of one trailer with that model's standard equipment including the content of specified option packages.

\* See back cover for further specification definitions.

# Popular Features

**FEATURES THAT MAKE YOUR TRIPS FEEL LIKE HOME.** Rockwood takes careful consideration to each feature added into each product produced. Every detail is considered ranging from extra sleeping room, storage, comfort and convenience. Take time to review the features listed below and match them with the competition's products. We're confident you'll discover Rockwood is the superior choice.



- A Standard 100W Roof Mount Solar Panel w/ 1000w inverter (NA 12RK)
- B Shower Miser Water Saver (Std on all models with showers )
- C WIFI Ranger Sky 4 WIFI Booster with LTE available connectivity
- D Optional Tongue Mount Bike Rack
- E Dexter Torflex Axles:
  - Independent wheel suspension and self-damping action
  - Rubber cushioning eliminates metal-to-metal contact.
  - Forged torsion arm for maximum strength

Models are also equipped with E-Z Lube® System and Nev-R-Adjust® Brakes.

# Rockwood Geo Pro

## STANDARDS & OPTIONS

MODELS	G	MODELS	G	MODELS	G
<b>STANDARD PACKAGE A (N/A G12RK)</b>		Coleman Stove/Grill Combo	S	Water Heater, Gas/Electric (N/A G12RK)	S*
Roller Shades	S	Ground Solar Prep	S	Shower Miser Water Saver (NA G12rk, G12STK)	S*
12 Volt TV w/ DVD Player	S	<b>STANDARDS</b>		Power Awning (NA G12RK & G12SRK)	S*
AM/FM Stereo w/ Bluetooth and USB	S	Aluminum Cage Dinette Base dinette models)	S*	Black Tank Flush (N/A G12RK)	S*
Multidirectional TV Antenna	S	6 Sided Aluminum Cage Construction	S	360 Siphon Cap on Black Tank (N/A G12RK, G12SRK)	S*
Quick recovery Gas/Electric Water Heater	S	Vacuum Laminated Roof and Walls	S	Spare Tire W/ Carrier	S
Outside Speaker (N/A G12SRK)	S*	4 Frame Mounted Stabilizer Jacks (2 on G12RK, G12SRK)	S	Water-Pur Filtration System (N/A G12RK)	S*
100 Watt Roof Mount Solar Panel w/ 1000 Watt Inverter	S	MORryde Entry Steps (N/A G12RK, G12SRK)	S*	<b>OPTIONS</b>	
WiFi Ranger WiFi Booster Sky 4	S	Roof Ladder (NA G12RK, G12SRK)	S*	13,500 Low Profile Roof A/C	0
Power Awning (N/A G12SRK)	S*	Torsion Axle, Rubber-Ryde Suspension	S*	Chill Chaser Heat Strip For A/C (G12RK only)	S*
20,000 BTU Furnace	S	Nitro Filled Radial Tires	S	Manual Awning 12RK & 12SRK	0*
Coleman Stove/Grill Combo	S	Prewire for Back Up Camera (N/A G12RK, G12SRK, G16TH)	S*	CSA (Canadian Standards)	0*
2- 20# LP Bottles	S	Magnetic Baggage Door Catches	S	Gas Oven (G19BH, G19FBS, G19FD)	0*
Microwave	S	WiFi Ranger Sky 4 WiFi Booster, LTE Ready	S	Convection Microwave (N/A G12RK, G12SRK)	0*
Polished Alloy Wheels	S	Maxxair® Ventilation Fan and Vent Cover (Opt G12RK,		Pro Rac Mounting Bars (G12RK & G12SRK Only)	0*
Tinted Bonded Frameless Windows	S	N/A G14FK, G15TB & G16TH)	S*/0*	Pro Rac Mounting Bars w/ Removable Ladder	0*
Spare Tire	S	Power Vent Fan (G14FK, G15TB & G16TH Only)	S*	(N/A G12RK & G12SRK)	0*
Heated Mattress, (NA 14FK,16BH, 15TB, 16TH)	S*	Recessed Cooktop W/ Flush		Pro Rac Kayak, Bike, Tie Downs, Etc. Accessories	0
<b>STANDARD PACKAGE B (G12RK Only)</b>		Mount Cover (N/A G12RK, G12SRK)	S*	Tongue Mount Bike Rack	0
AM/FM Stereo w/ Bluetooth and USB	S	Microwave Oven	S	Off Road Pkg. includes 15" Mud Rover Radial Tires and a lift Kit	
12 Volt TV w/ DVD Player	S	Auto Gas/Electric Refrigerator		(Step extension on the 12RK and 12SRK)	0*
Multidirectional TV Antenna	S	(G19BH, G19FBS & G19FD) (N/A G12RK)	S*		
Outside Speaker	S	3-Way Refrigerator (N/A G12RK, G19BH, G19FBS & G19FD)	S		

STANDARDS & OPTIONS ARE SUBJECT TO CHANGE.

Look for our other popular lines of Rockwood camping trailers.



Rockwood Tent Campers



Rockwood Travel Trailers



Rockwood Fifth Wheels

**FREE MEMBERSHIP**  
to Forest River Owners' Group

www.forestriverfrog.com



**PRE-DELIVERY INSPECTION FACILITY**

20,000 square feet of quality assurance. The bare essentials for a premium product. This state-of-the-art facility gives immediate daily feedback to production for quality assurance in every unit built.

**Specification Definitions**

**GVWR (Gross Vehicle Weight Rating)** - is the maximum permissible weight of the unit when fully loaded. It includes all weights, inclusive of all fluids, cargo, optional equipment and accessories. For safety and product performance do NOT exceed the GVWR.

**GAWR (Gross Axle Weight Rating)** - is the maximum permissible weight, including cargo, fluids, optional equipment and accessories that can be safely supported by a combination of all axles.

**UVW (Unloaded Vehicle Weight)\*** - is the typical weight of the unit as manufactured at the factory. It includes all weight at the unit's axle(s) and tongue or pin and LP Gas. The UVW does not include cargo, fresh potable water, additional optional equipment or dealer installed accessories.

\*Estimated average based on standard build optional equipment.

**CCC (Cargo Carrying Capacity)\*\*** - is the amount of weight available for fresh potable water, cargo, additional optional equipment and accessories. CCC is equal to GVWR minus UVW. Available CCC should accommodate fresh potable water (8.3 lbs per gallon). Before filling the fresh water tank, empty the black and gray tanks to provide for more cargo capacity.

\*\* Estimated average based on standard build optional equipment

Each Forest River RV is weighed at the manufacturing facility prior to shipping. A label identifying the unloaded vehicle weight of the actual unit and the cargo carrying capacity is applied to every Forest River RV prior to leaving our facilities.

The load capacity of your unit is designated by weight, not by volume, so you cannot necessarily use all available space when loading your unit.

**Rockwood Warranty. Our Promise.**

**FOR DETAILS ON ROCKWOOD'S COMPLETE WARRANTY PROGRAM, SEE YOUR ROCKWOOD DEALER.** When it comes to backing products with the same quality and commitment it does when it begins the manufacturing process, the only name you have to remember when you're looking for a recreational vehicle is Rockwood. Rockwood offers the following additional limited warranties to the original purchasers. Consult written warranty for details.

1. Twelve-year vinyl roof warranty.
2. Two-year fiberglass warranty.
3. Ten-year Torflex® axle warranty.
4. One-year bumper to bumper warranty.
5. Five-year tent warranty



**Learn More**  
Scan this barcode using a QR Reader on your smart phone to learn more about Forest River.



A Berkshire Hathaway company.

201 WEST ELM MILLERSBURG, IN 46543 [WWW.FORESTRIVERINC.COM/ROCKWOOD](http://WWW.FORESTRIVERINC.COM/ROCKWOOD) 574.642.2640

**CUSTOMER SATISFACTION**



YOUR ROCKWOOD DEALER

Colton RV & Marine  
3122 Niagara Falls Blvd  
North Tonawanda, NY 14120  
(716) 694-0188  
[www.ColtonRV.com](http://www.ColtonRV.com)

Colton RV & Marine  
3443 Southwestern Blvd.  
Orchard Park, NY 14127  
(716) 957-3250  
[www.Coltonrv.com](http://www.Coltonrv.com)

**www.ForestRiverBuyLocal.com**

All information contained in this brochure is believed to be accurate at the time of publication. However, during the model year, it may be necessary to make revisions and Forest River, Inc., reserves the right to make all such changes without notice, including prices, colors, materials, equipment and specifications as well as the addition of new models and the discontinuation of models shown in this brochure. Therefore, please consult with your Forest River dealer and confirm the existence of any materials, design or specifications that are material to your purchase decision. Litho. U.S.A FOR 15B2 W: 2019.01.14



**24/7 EMERGENCY  
ROADSIDE ASSISTANCE  
WITH VEHICLE PURCHASE\***

- |                 |                         |
|-----------------|-------------------------|
| TOWING          | WINCH-OUT               |
| JUMP-STARTS     | MOBILE MECHANIC         |
| TIRE CHANGES    | TECHNICAL               |
| FLUID DELIVERY  | SUPPORT                 |
| LOCKOUT SERVICE | DEALER LOCATOR SERVICES |



\*VALID FOR 1 YEAR FROM DATE OF PURCHASE