

TIFFIN

CLASS-A

BOB TIFFIN LIMITED EDITION
ALLEGRO BUS



Premium Paint System

Our eight-step full-body paint system features premium grade paints sealed with four layers of clear coat with ultraviolet protection. An additional layer of high-performance film protects the front of the coach and select areas.



Our L1 and L2 premium paint schemes give you 6 different ways to make your Bob Tiffin Limited Edition Allegro

Bus your very own. To learn more, visit tiffinmotorhomes.com.

L1



REAR VIEW



FRONT VIEW

L1 CINDERWOOD



REAR VIEW



FRONT VIEW

L1 NASA



REAR VIEW



FRONT VIEW

L1 WATERFALL

L2

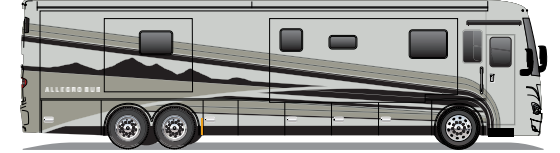


REAR VIEW



FRONT VIEW

L2 CINDERWOOD

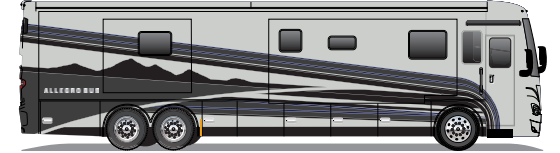


REAR VIEW

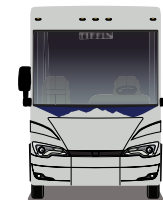


FRONT VIEW

L2 NASA



REAR VIEW



FRONT VIEW

L2 WATERFALL

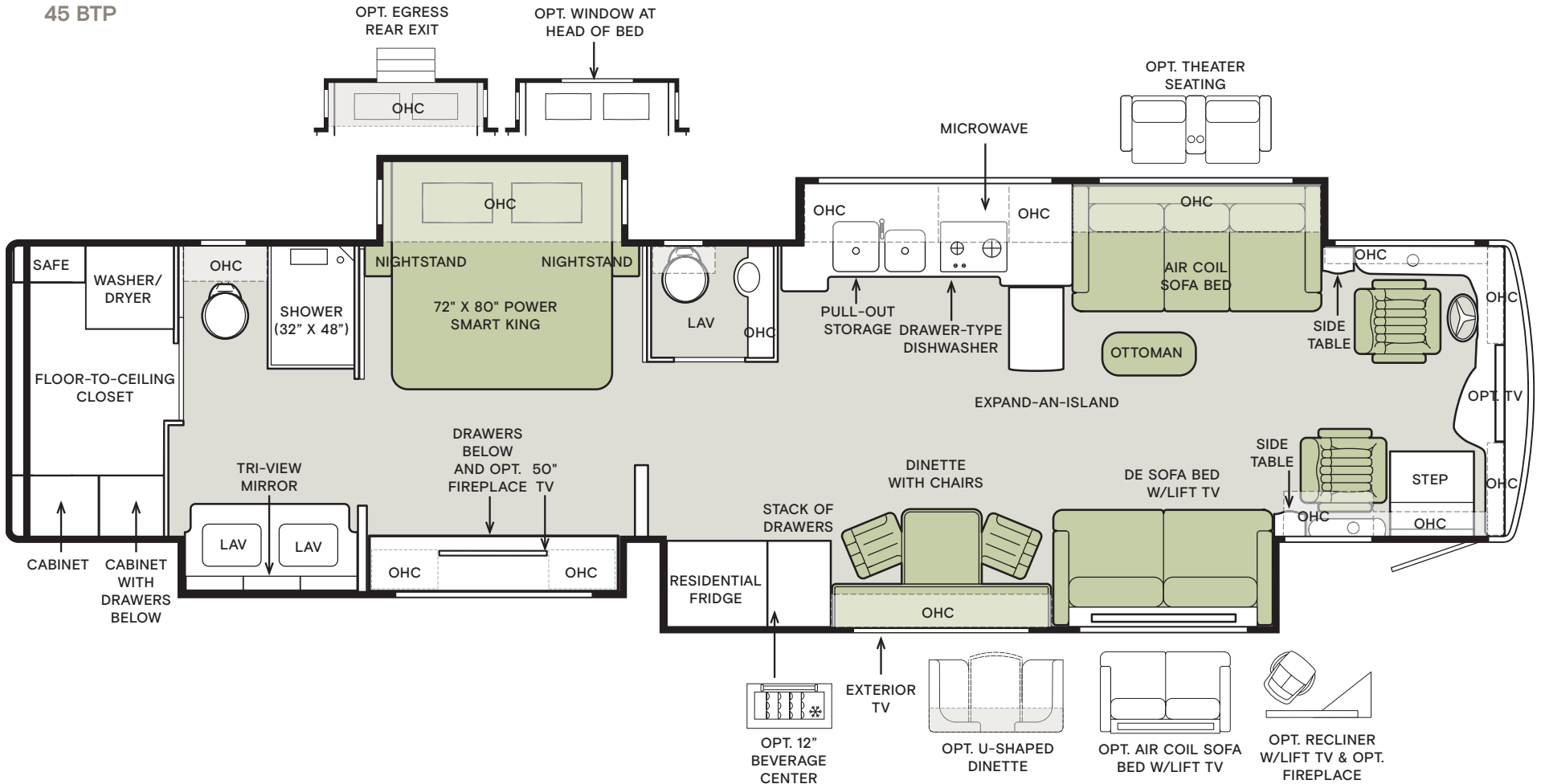
Images shown are representations of paint layouts only and do not reflect all exterior features or options. Colors shown may slightly differ from colors on actual product.

Floor Plan



The design of every Allegro Bus floor plan must meet four essential criteria:
 Maximum space, Optimal organization, Relaxation plus, and Elegant atmosphere.
 Tiffin's MORE Plans offer your family the most comfortable layout for life on the road.

45 BTP

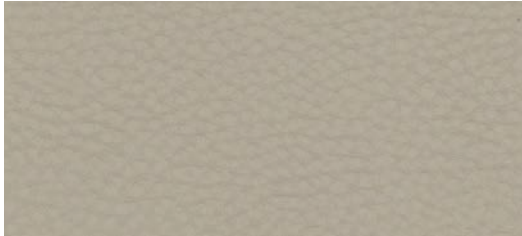


If optional furniture combinations are selected, window locations may vary from diagram shown.
 All options may not be available in every model. Because of progressive improvements and specifications, standard and optional equipment are subject to change without notice or obligation.
 For a complete and up-to-date list of available options and specifications, visit tiffinmotorhomes.com.

Interior Décor

Enjoy special interior options inspired by Bob Tiffin. Express yourself by choosing the cabinet finish that fits your style. In the Bob Tiffin Limited Edition Allegro Bus, you'll be able to travel in style no matter where your adventure takes you.

FURNITURE



RICE PAPER

FLOORING



CABINETS



WHITE LINEN



GLAZED HONEY NATURAL CHERRY



BLACK TRUFFLE



GLAZED CANYON CHERRY



PLATINUM

Images shown are representations of paint layouts only and do not reflect all exterior features or options. Colors shown may slightly differ from colors on actual product. Colors of interior decor options shown may vary from colors on actual product.

GREAT SMOKEY MOUNTAINS



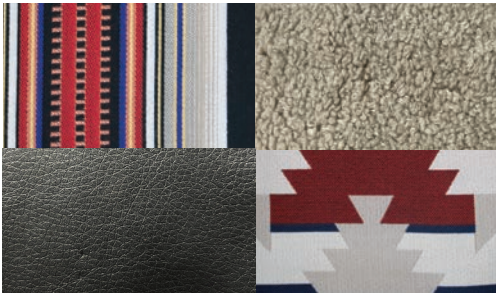
WINDOW TREATMENT



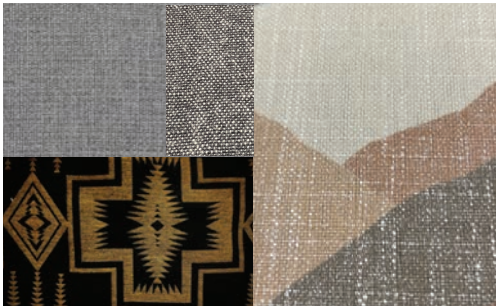
BACKSPLASH



COUNTERTOP



LIVING ROOM



MASTER SUITE



In recognition of Bob Tiffin's **82nd birthday**, only 82 of the limited edition specially designed coaches will be built. There are elements throughout inspired by Bob that have special meaning. As you step inside, there is a plaque that will be numbered from 01 through 82.

You will discover many other unique elements throughout the interior and exterior that make this a very special coach.



A numbered plaque will be located just inside the door of each bus.



Bob Tiffin's embroidered signature will be on the front seats for another special touch.



The interior décor color scheme is named the Great Smoky Mountains, suggesting mountains and water. However, many patterns and designs found throughout are inspired by Bob and Judy's love for the Southwest.



Other design elements inspired by Mr. Bob's antique car collection are used throughout the coach, like the front grill of a Packard. Bob's love of classic cars can also be found in the artwork, featuring his two favorite cars, Maggie and Mabel.

Specifications, Features, and Options

KEY : S : Standard Feature | O : Optional Feature; Additional costs may apply | D : Dependent; Availability is dependent on selection of another option | — : Not Available

| WEIGHTS AND MEASURES | 45 BTP |
|--|--------|
| DIMENSIONS | |
| Overall Length (approx.) ¹ | 45' |
| Wheel Base ² | 323" |
| Overall Width ¹ | 101" |
| Overall Height | 13' 3" |
| Minimum Garage Height | 14' |
| Interior Height | 83" |
| Interior Width | 96" |
| Basement Storage (cubic feet, approx.) | 257 |
| Square Footage (approx.) ³ | 440 |
| WEIGHT LIMITS | |
| GAWR-Front (pounds) | 18,000 |
| GAWR-Rear (pounds) | 23,000 |
| GVWR (pounds) | 52,000 |
| Maximum Trailer Weight (pounds) ⁴ | 15,000 |
| Hitch Rating (pounds) | 15,000 |
| GCWR (pounds) | 67,000 |

¹ The approximated coach width and length does not include side-view mirrors and rear ladders.

² On tag axle coaches, measurement is taken from the center of the steer axle to the centerline between the drive and tag axle.

³ Square footage was calculated with the slide-outs fully extended.

⁴ Maximum trailer weight is dependent on the loading and towing variables which include the GVWR, GAWR, and GCWR, as well as adequate trailer brakes.

⁵ Diesel Exhaust Fluid (DEF) is the active component used in Selective Catalytic Reduction (SCR) engines to reduce nitrogen oxide emissions by 90% to meet EPA standards.

⁶ Dependent on furniture and dinette options.

CHASSIS AND DRIVETRAIN

- Two-wheel Drive
- Aluminum Wheels
- Front and Rear 315/80R 22.5 Tires
- Combination Valid™ Air Leveling System with Hydraulic Leveling Jacks
- Integrated Leveling Controls Through Valid™ Instrument Cluster
- ZF Independent Front Suspension
- Front Sway Bar
- Custom Tuned Koni Shock Absorbers
- Side-mounted Radiator
- Full Air Brake System with Automatic Slack Adjusters
- Three-stage Compression Brake
- Manual Parking Brake
- Air Force One Tow Vehicle Brake System
- Dual Fuel Fill Capable
- Tire Pressure Monitoring
- Adaptive Cruise Control
- Automatic Traction Control
- Collision Mitigation with Forward Warning and Active Braking
- Electronic Stability Control

| CHASSIS OPTIONS | | 45 BTP |
|--------------------|---|--------|
| Engine | Cummins® L9 450 HP Diesel Engine with 1,250 lb-ft Torque ¹ | S |
| Alternator | 210-Amp Alternator | S |
| Transmission | Allison® 3000 MH 6-speed Automatic Transmission with Lock-up Torque Converter | S |
| Chassis Batteries | (2) 12-Volt Flooded Lead-Acid Chassis Batteries | S |
| Steerable Tag Axle | | S |
| Service Brakes | Tag Axle Drum Brakes | S |

¹ Peak horsepower achieved at 2,100 RPM. Peak torque achieved at 1,400 RPM.

CONSTRUCTION

- Seamless One-piece Gel-coat Fiberglass Molded Roof Cap
- 5 1/4" Formed Roof Insulation
- Tubular Aluminum Roof Skeleton Frames
- Extraordinaire™ Ducted Air Cooling System
- One-piece Molded Gel-coat Fiberglass Front and Rear Caps
- Steel Cockpit Overhead Support Frame
- Crane® Composites Noble® Select All-Composite Exterior Sidewalls
- Tubular Aluminum Wall Skeleton Frames
- High-performance Thermal Insulation in Sidewalls
- Engineered Wood Sub-flooring
- Laminated Elevated Sub-Flooring with 2 3/4" Thick Thermal Insulation
- Steel Basement Construction
- Rust Protective Undercoating
- Hydraulic Slide-out Mechanisms
- Extra Storage Chassis Construction ¹

¹ Floor is constructed flush with top of rear engine. Allows for more basement storage and eliminates step in rear bedroom or bathroom walking area.

| WEIGHTS AND MEASURES | 45 BTP |
|---------------------------------|---------|
| CAPACITIES | |
| Fuel Tank (gallons) | 150 |
| DEF Tank (gallons) ⁵ | 10 |
| Fresh Water (gallons) | 100 |
| Grey Water (gallons) | 100 |
| Black Water (gallons) | 55 |
| QUANTITIES | |
| Number of Slideouts | 4 |
| Sleeping Capacity ⁶ | 2 to 5 |
| Sleeping Areas ⁶ | 1 to 3 |
| Seat Belts ⁶ | 4 to 9 |
| Seating Capacity ⁶ | 7 to 11 |

| ELECTRICAL | | |
|--|--|--|
| <ul style="list-style-type: none"> • Hydronic Heating & Electronic Appliance Equipped Coach ¹ • Spyder Controls Multiplex System • Firefly Integrations Eclipse Module ² • Centralized 10" Spyder System Main Monitor • Passenger Console Spyder System Color Touchscreen • Interior Entryway Spyder System Color Touchscreen • Exterior Spyder System Color Touchscreen • Additional Spyder Color Touchscreens Throughout Coach • 10.0-Kilowatt Onan® Quiet Diesel Generator | <ul style="list-style-type: none"> • Generator Slide Tray • 2,800-Watt Pure Sine Wave Inverter Charger with Auto-Gen Start and Interior Remote Control ³ • (3) 15,000-BTU Low Profile Air Conditioners with Heat Pumps and Condensation Drains • Aqua-Hot® 450D Heat Exchanger ⁴ • 50-Amp Shore Power with Powered Retract Reel • Prep for Solar Panels ⁵ • Auxiliary Solar Port • Energy Management System • HD Over-the-air Antenna • Park Cable and Ground Satellite Hook-up | <ul style="list-style-type: none"> • In-motion Satellite Dish ⁶ • Blu-ray™ Player • Prewiring for Winegard® Travler™ Satellite • Satellite Receiver ⁷ • 12-Volt Breaker Panel • 12-Volt Disconnect Switch • Rotary Disconnect Switches for House Batteries, Chassis Batteries, and Inverter • Ground Fault Circuit Interrupter (GFCI) Outlets at Galley, Lavatories, and Sewer Bay • 110-Volt Exterior Receptacle • Surge Guard® Transfer Switch • USB Receptacles Throughout Coach |
| ELECTRICAL OPTIONS | | 45 BTP |
| House Batteries | (6) 6-Volt, 230-Amp Hours Flooded Lead-Acid House Batteries | S |
| | (6) 6-Volt, 300-Amp Hours Extended Cycle AGM House Batteries | O |
| | (3) 12-Volt, 270-Amp Hours Lithium House Batteries | O |
| Solar Panels | Battery Slide-out Tray ⁸ | D |
| | (3) 200-Watt Solar Panels with (1) 30-Amp Controller | O |
| Internet & Phone | (6) 200-Watt Solar Panels with (2) 30-Amp Controllers | O |
| | Prep for Wi-Fi Booster ⁹ | D |
| | Wi-Fi Booster ¹⁰ | O |
| | Starlink® Pro ¹¹ | S |

¹ Space heating, water heating, and cooking appliances are electrically powered. Formerly known as "All-Electric Coach".

² Download the accompanying Vegatouch app to control your coach locally offline using Bluetooth and remotely anywhere there's internet for the coach module (Local control only for slides and awning). Includes a free 90-day remote access trial.

³ Automatic generator start capabilities controlled through Spyder Controls Multiplex System.

⁴ Aqua-Hot® heat exchanger provides both heated air and water.

⁵ Includes docking ports for aftermarket solar panels.

⁶ High-definition programming is not available on a domed satellite antenna unless you subscribe to DISH Network®.

⁷ Requires subscription.

⁸ Standard with flooded and extended cycle AGM batteries. Not available with lithium batteries.

⁹ Standard unless Starlink Pro is optioned.

¹⁰ Not combinable with Starlink Pro option.

¹¹ Not combinable with Wi-Fi Booster option. Requires subscription.

PLUMBING

- Aqua-Hot® 450D Heat Exchanger ¹
- Aqua View Showermiser™
- Water Filter
- Water Pump Switch Access from Spyder System and Sewer Bay Board
- Low-point Water Drain Lines
- Black Holding Tank Flush System
- Gravity Water Fill
- Heated Water and Holding Tank Compartment
- SeeLevel™ Tank Monitor
- Centralized Exterior Sewer Bay with Gravity Black and Grey Evacuation Ports
- Exterior Rinse Hose with Shower Head
- Sewer Bay Hand Sanitizer and Paper Towel Holders
- Fresh Water Hose with Power Retract Reel
- Sewer Hose Storage

¹ Aqua-Hot® heat exchanger provides both heated air and water.

Specifications, Features, and Options (Cont'd)

KEY : S : Standard Feature | O : Optional Feature; Additional costs may apply | D : Dependent; Availability is dependent on selection of another option | - : Not Available

EXTERIOR

- Full-body Paint with (4) Layers of Clear Coat
- Striped Slide-out Endwalls
- High Performance Protective Film on Front Cap and Select Areas
- Girard® Powered Door Awning with Integrated LED Lighting
- Girard® Slide-out Toppers
- Side-swinging Exterior Storage Doors with Gas Shocks
- Lockable Handles on Compartment Doors
- Motion-sensor Lights in Cargo Bay
- 120-Volt and 12-Volt Outlets Inside Cargo Bays
- Pass-through Basement Storage
- Charcoal Carpet Cargo Walls
- Fiberglass Reinforced Plastic Basement Floor
- Frameless, Dual-Pane Windows
- Exterior Patio Light
- Fog Lights
- Daytime Running Lights
- Docking Lights
- Exterior Ground Effects Lighting
- Chrome Power Heated Side-View Mirrors with Integrated Cameras
- Exterior TV with Soundbar
- Fast Charge USB ports within Exterior TV Compartment
- Lightweight Entry Door with Integrated Screen
- Deadbolt Front Entrance Lock
- Lighted Entry Door Grab Handle
- Automatic Stainless Steel Double Entry Step
- Keyless Entry System for Front Entrance and Component Doors
- Mud Flaps
- Custom Rock Guard

| EXTERIOR OPTIONS | | 45 BTP |
|---|--|--------|
| Patio Awnings | (1) Girard® Roof-mounted Powered Patio Awning with Integrated LED Lighting and Dual Pitch Feature | S |
| | (2) Girard® Roof-mounted Powered Patio Awnings with Integrated LED Lighting and Dual Pitch Feature | S |
| Window Awnings | Girard® Powered Window Awning Package | S |
| Cargo Door Stainless Steel Rocker Trim | | S |
| Slide Trays ¹ | (1) Powered Storage Compartment Slide-out Tray | O |
| | (2) Powered Storage Compartment Slide-out Trays | O |
| Basement Freezer | | S |
| Exterior Lighting under Slide-out | | S |
| Lippert™ On-The-Go™ Telescoping Ladder ² | | S |

¹ Trays slide out on both sides of motorhome.

² All units will ship with a Lippert™ On-The-Go™ Prepped Receiver installed.

INTERIOR

- Handcrafted Overhead Cabinetry
- Solid Surface Step Well with Tile Inserts
- Powered Step Well Cover
- Storage Compartment Within Entry Steps
- Recessed Step Well Lighting
- Living Area TV
- Solid Surface Galley Countertop
- Handcrafted Slide-out Fascia
- Soft Touch Vinyl Ceiling
- Dimmable LED Lighting
- Prep for Washer and Dryer
- Carbon Monoxide Detector
- LPG Leak Detector
- Smoke Detector
- Fire Extinguisher
- Powered Solar and Privacy Shades
- Soft-closing Drawers
- Powered Roof Vents
- Central Vacuum System with VacPan® Automatic Dustpan
- Interior Grab Handle at Entry Door
- Egress Windows Throughout Coach

| INTERIOR OPTIONS | | 45 BTP |
|---|----------------------------------|--------|
| Interior Décor Packages | Great Smoky Mountain | S |
| | Ultrafabrics® Tottori Rice Paper | S |
| Cabinetry Stain | Shadow | O |
| | White Linen | O |
| | Glazed Canyon Cherry | O |
| | Glazed Honey Natural Cherry | O |
| | Black Truffle | O |
| | Platinum | O |
| Floor Tiles | Inset Glazed Porcelain Tile | S |
| | Border Glazed Porcelain Tile | S |
| Slide-out Flooring | Tile Slide-out Floors | S |
| Stacked Washer and Dryer | | S |
| Gold Heat® Dual Zones Heated Tile Floor | | S |

DRIVER'S COMPARTMENT

- Ultrafabrics® Tottori Power Driver and Passenger Seats
- Dual Driver And Passenger Seat Armrests
- Swivel Bases for Driver and Passenger Seats
- Powered Passenger Seat Footrest
- Integrated Seat Belts on Driver and Passenger Seats
- Lumbar Support on Driver and Passenger Seats
- Tilt and Telescoping Steering Wheel with Integrated Controls
- Adjustable Accelerator and Brake Pedals
- Ergonomic Dash with Carbon Fiber Accents
- Mounted Dash Fans
- Cupholders on Driver and Passenger Side
- Valid™ Liquid Crystal Display Instrument Cluster with Integrated Leveling Controls
- (2) Center Storage Drawers
- Generator Start & Stop Rocker Switch
- USB Dash Receptacles
- 12-Volt Dash Receptacle
- Backlit Dash Rocker Switches
- Passenger Console Wireless Phone Charger
- 7" Passenger Console Advanced Monitor System Touchscreen
- Driver Console Stationary Mount Phone Charger
- Driver and Passenger Map Lights
- One-piece Panoramic Windshield
- Single-motor Intermittent Windshield Wipers
- Automatic LED Headlights
- Side-view Cameras ¹
- Color Back-up Camera
- 10" Glass Panel Camera Monitor for Side-view, Back-up, and 360° View Cameras
- Blind Spot Monitoring System
- Advanced Monitor System featuring Media Center, Bluetooth®, and AM, FM, and Satellite Radio ²
- Ceiling Mounted Speakers
- JBL® Sound System ³
- In-dash Navigation System via Advanced Monitor System's 10" Glass Panel Touchscreen
- Overhead Cabinetry with Wooden Panel Doors
- Auxiliary Start Switch
- Concealed Air Horn
- Powered Opening Driver Side Window
- Solid, Non-opening Passenger Side Window
- Powered Solar and Privacy Windshield Shade
- Powered Solar and Privacy Shades on Side Windows

| DRIVER'S COMPARTMENT OPTIONS | | 45 BTP |
|------------------------------|--|--------|
| 360° View Camera | | O |
| Front Overhead TV | | O |

¹ Integrated within side-view mirrors and activated by turn signals.

² Includes a 10" Touchscreen LCD monitor for navigation system and entertainment, a 10" camera monitor, and a 7" passenger monitor. Subscription required for satellite radio. Now standard for all floorplans.

³ Includes amplifier and (2) subwoofers. Now standard for all floorplans.

| DINETTE AND LIVING AREA | | SLEEPS | SEATS | SEATBELTS | 45 BTP |
|--------------------------|---|--------|-------|-----------|--------|
| Driver Side Furniture | 80" Air Coil Sofa Bed with Lift TV ¹ | 1 | 3 | 3 | S |
| | 80" DE Sofa Bed with Lift TV ² | 1 | 3 | 3 | O |
| | Ottoman with Internal Storage ⁴ | - | - | - | D |
| Passenger Side Dinette | 75" Dinette with Chairs ⁵ | - | 2 | - | S |
| | 75" U-shaped Dinette | - | 4 | 2 | O |
| Passenger Side Furniture | 88" DE Sofa Bed ⁶ | 1 | 3 | 3 | S |
| | 88" Air Coil Sofa Bed ³ | 2 | 3 | 3 | O |
| | 88" Theater Seating | - | 2 | 2 | O |
| | Ottoman with Internal Storage ⁷ | - | - | - | D |

¹ Mattress measures 72" x 52" and includes internal pump. Lift TV deletes cabinetry over furniture.

² Piece of furniture converts to 73" x 49" sleeping area. Lift TV deletes cabinetry over furniture.

³ Mattress measures 72" x 59" and includes internal pump.

⁴ Standard unless theater seating option is chosen. Only one ottoman per motorhome.

⁵ Formerly known as "Dinette Computer Workstation". The printer bump-out was removed for more leg room. The keyboard and printer trays have been converted to a drawer and a fixed shelf to maximize storage. Includes (2) freestanding accent chairs and (2) wooden folding chairs.

⁶ Piece of furniture converts to 81" x 49" sleeping area.

⁷ Standard unless theater seating option is chosen. Only one ottoman per motorhome.

Specifications, Features, and Options (Cont'd)

KEY : S : Standard Feature | O : Optional Feature; Additional costs may apply | D : Dependent; Availability is dependent on selection of another option | — : Not Available

KITCHEN

- 1.7-Cubic Foot Smart Convection Microwave with Air Fry
- Double Bowl Kitchen Sink with Single Lever Faucet and Pull-down Sprayer
- Built-in Soap Dispenser
- Galley Overhead Cabinets
- with Pull-out Drawers
- Panoramic Galley Window
- Task Lighting
- Toe Kick Lighting
- Under Counter LED Accent Lighting
- Pantry Lighting
- Full Tile Backsplash
- Solid Surface Galley Countertop, Sink, and Cooktop Cover
- Pull-out Utility Box Located Under Sink

| KITCHEN OPTIONS | | 45 BTP |
|--|--|--------|
| Refrigerator | 25-Cubic Foot Stainless Steel Residential Refrigerator with French Doors and Bottom Freezer ¹ | S |
| Decorative Wooden Refrigerator Panel | | O |
| Cooking Appliances | Two-Burner Induction Cooktop | S |
| | Wolf® Induction Cooktop | O |
| InSinkErator® Instant Hot Water Faucet | | O |
| Drawer-style Dishwasher | | S |
| 12" Beverage Center ² | | O |
| Electronic Release Expand-An-Island | | S |

¹ Refrigerator volume is approximated.

² Not compatible with fireplace on 35 CP.

BEDROOM

- Under Bed Storage
- Bedside Windows
- Bed Comforter with Throw Pillows
- Handcrafted Privacy Door
- LED Reading Lights
- Nightstand with Solid Surface Tops
- Mounted Bedroom TV
- Centralized Entertainment Center¹
- Ceiling Fan
- Decorative Handcrafted Wood Ceiling Ring
- Safe

| BEDROOM OPTIONS | | 45 BTP |
|----------------------------------|---|--------|
| Mattress | Memory Foam King Mattress (72" x 80") with Power Smart Lift | S |
| Bed Slide | Overhead Cabinet with Headboard | S |
| | Window at Head of Bed ² | O |
| Shoe Rack | | S |
| Bedroom Storage | Walk-in Closet | S |
| | Solid Surface Countertops within Storage Spaces | S |
| Bedroom Fireplace | | O |
| Bedroom Egress Door ³ | | D (O) |

¹ Houses Blu-ray™ player, satellite receiver, and cable TV hook-up.

² Window option removes overhead cabinets.

³ Available as an add-on option when combined with overhead cabinet with headboard. Not available with window at head of bed.

BATHROOM

- (2) Porcelain Master Bathroom Sinks
- Solid Surface Lavatory Top
- Teak Folding Shower Seat
- Shower Head with Detachable Hand-held Shower Wand
- Shower Skylight
- Shower LED Light with Sliding Cover
- Towel and Toilet Paper Holders
- Medicine Cabinet with Tri view Vanity Mirror
- Roof Vent Fan
- Base Cabinet

| BATHROOM OPTIONS | | 45 BTP |
|---------------------|--|--------|
| Number of Bathrooms | (1) Bathroom and (1) Half-bath ¹ | S |
| Shower | Solid Surface Shower Walls with Inlaid Tile and Residential Glass Door (32" x 48") | S |
| Toilet | (1) Electric Gravity Flush Toilet and (1) Macerator Toilet | S |

¹ All half-baths contain a toilet and a solid surface countertop with a single porcelain sink.

Because of progressive improvements and specifications, standard and optional equipment are subject to change without notice or obligation. For a complete and up-to-date list of available options and specifications, visit tiffinmotorhomes.com.

FOR SALES CALL 256-356-8661 AND PARTS & SERVICE CALL 256-356-0261 OR VISIT TIFFINMOTORHOMES.COM

105 2ND ST NW RED BAY, AL 35582  

Colton RV & Marine
3122 Niagara Falls Blvd
North Tonawanda, NY 14120
(716) 694-0188
www.ColtonRV.com

Colton RV & Marine
3443 Southwestern Blvd.
Orchard Park, NY 14127
(716) 957-3250
www.Coltonrv.com



TIFFIN
MOTORHOMES

All trademarks and logos are owned or used under license by Tiffin Motor Homes, Inc. and include, but are not limited to: TIFFIN®, MANY ADVENTURES. ONE DREAM™, ALLEGRO®, ALLEGRO BREEZE®, ALLEGRO RED®, PHAETON®, ALLEGRO BUS®, ZEPHYR®, WAYFARER®, ROUGHING IT SMOOTHLY®, OPEN ROAD®, POWERGLIDE®, BYWAY™, and associated logos and emblems. Unauthorized use of any trademark of Tiffin Motor Homes, Inc. is strictly prohibited.

© Copyright 2024 Tiffin Motor Homes, Inc.

For all information concerning the limited warranty provided by Tiffin, please refer to the full written limited warranty set forth on the Tiffin website or held by our authorized dealerships. Please note, some interior furnishings not included. Revised: 01/07/24