

THE ALL-NEW TIFFIN GH1.

# GET OFF-GRID AND STAY THERE.



2025

Colton RV & Marine  
3122 Niagara Falls Blvd  
North Tonawanda, NY 14120  
(716) 694-0188  
[www.ColtonRV.com](http://www.ColtonRV.com)

Colton RV & Marine  
3443 Southwestern Blvd.  
Orchard Park, NY 14127  
(716) 957-3250  
[www.Coltonrv.com](http://www.Coltonrv.com)

**TIFFIN**  
**GH1**

# TAKE THE COMFORTS OF HOME OFF-ROAD.



## SUPERIOR BUILD QUALITY

Constructed with more durable composite materials for less wear and tear, along with superior insulation to withstand hot and cold temperatures. Ruggedized Flooring Material by Lonseal® designed with surface embossing for enhanced traction. Topseal layer added for durability to protect flooring from wear due to staining, soiling, and scuffing.

# TIFFIN

## CH1



## EQUIPPED STANDARD WITH AWD AND FOX SHOCK SYSTEM BY AGILE OFFROAD

Designed to give you a more comfortable and capable vehicle with predictable handling both on & off-road.



## OFF-ROAD READY

Designed with every component needed to make it off-road ready.

- ARB on board air compressor
- Custom racks and step rails
- LED lighting
- A/T BFG KO2 tires
- Optimal ground clearance for better traction on uneven terrain

## POWERFUL 540 AMP HOUR BATTLEBORN® BATTERY SYSTEM WITH VICTRON INVERTER

Power all your off the grid adventures with a reliable battery you can trust.



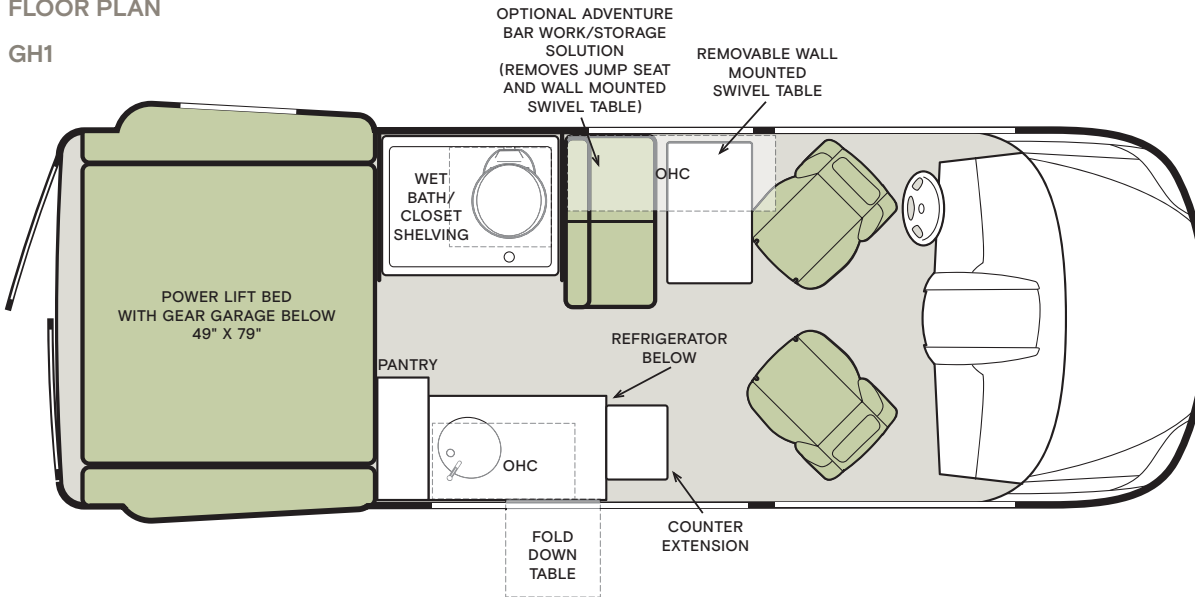
## ACCESS PORT FOR ROOFTOP ACCESSORY EXPANSION AND OPTIONAL FACTORY-INSTALLED STARLINK PRO

Easily stay connected with the ability to customize for your adventure.

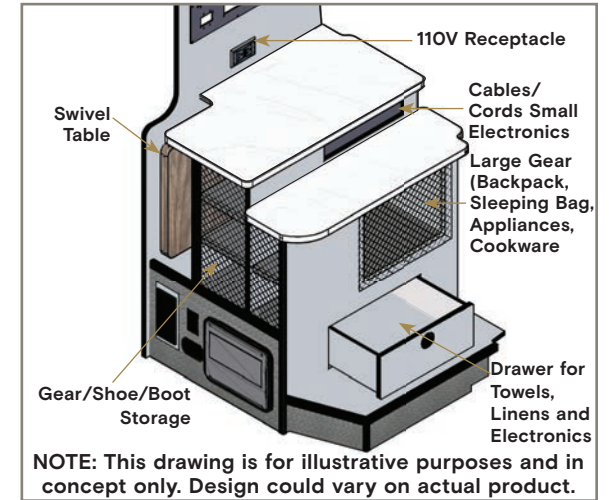


## FLOOR PLAN

GH1



## Optional Adventure Bar Work/Storage Solution



## PREMIUM PAINT SYSTEM



ARCTIC WHITE



BLUE GREY



SELENITE GREY



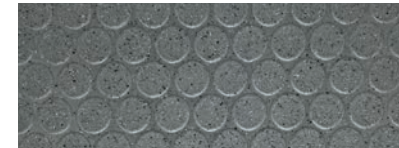
PEBBLE TAN

Images shown are representations of paint layouts only and do not reflect all exterior features or options. Colors shown may slightly differ from colors on actual product. For a complete and up-to-date list of available options and specifications, visit [tiffinmotorhomes.com](http://tiffinmotorhomes.com).

## Interior Décor

When it comes to the interior décor, we want to ensure we provide the style and durability you have in mind as an adventure seeker. In the 2025 Tiffin GH1, you'll be able to travel in style no matter where your adventure takes you.

## FLOORING



GREY NICKEL LONSEAL® FLOORING

## CABINETS AND COUNTERTOPS



OSAKA

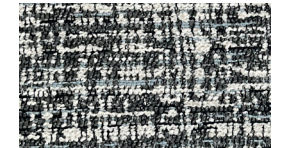


VENATO SPARKLE

## STARGAZER



UPHOLSTERY FABRIC



BEDDING FABRIC

Colors of interior decor options shown may vary from colors on actual product.



## GH1 Specifications

### WEIGHTS & MEASURES

- Overall Length (approx.): 19' 6"
- Overall Width: 92"
- Overall Height: 10"
- Interior Height: 75"
- Interior Width: 69"
- GVWR (pounds): 9,050
- Hitch Rating (pounds): 5,000
- GCWR (pounds): 13,930
- Fuel Tank (gallons): 24.5
- DEF Tank (gallons): 4.8
- Fresh Water (gallons): 26
- Grey Water (gallons): 22
- Cassette Toilet Tank (gallons): 4.5
- Sleeping Capacity: 2
- Sleeping Areas: 1
- Seat Belts: 2 to 4
- Seating Capacity: 4

### CHASSIS AND DRIVETRAIN

- Mercedes-Benz® 2500 Sprinter Cargo Van Chassis
- Mercedes-Benz® 2.0L 4-Cylinder Twin Scroll Turbo 211HP Diesel Engine with 332 lb-ft Torque
- All-Wheel Drive
- 220 Amp Primary / 250 Amp Secondary Alternators
- Mercedes-Benz® 9-Speed Shiftable Automatic
- Custom Offroad Tiffin Adventure Wheels
- Fox Shocks 2.5" Rear Shocks Replacement w/Front Auxiliary Shocks
- Front and Rear LT 245/70R 17 BF Goodrich® All-Terrain TA® KO2 Tires
- (1) 12-Volt AGM Chassis Battery
- Front Radiator
- Four Wheel ABS Brakes
- Manual Parking Brake
- Active Brake Assist (Collision Mitigation)
- Active Distance Assist Distronic® (Adaptive Cruise Control)
- Hill Start Assist
- Attention Assist
- Traffic Sign Assist
- Load Adaptive Electronic Stability Program (ESP)
- High Beam Assist
- Active Lane Keeping Assist
- Tire Pressure Monitoring
- Mercedes-Benz® Wireless Internet Access
- Roof Port Wiring Access for Aftermarket Electronics
- 12-Volt Breaker Panel
- 12-Volt Disconnect Switch
- USB Receptacles Throughout Coach
- Wire Prep for Starlink® Pro

### ELECTRICAL

- Hydronic Heating & Electronic Appliance Equipped Coach
- 3,000-Watt Victron Pure Sine Wave Inverter/Charger
- 540-Amp Hour Battle Born Lithium-Ion Battery Kit
- (1) 15,000-BTU Gree Eco-Cool Air Conditioner with Heat Pump, Soft-start and Bluetooth Capability
- Wall-mounted Thermostat with Built-in Temperature Sensor
- Aqua-Hot® 125 Modular Diesel Heat Exchanger <sup>1</sup>
- SmartPlug® Detachable 30-Amp Shore Power Cord
- (1) 220-Watt Solar Panel with (1) 30-Amp Controller

### ELECTRICAL OPTION

	GH1
Factory Installed Starlink® Pro	O
810-Amp Hour Max Power Lithium-Ion Battery Kit <sup>2</sup>	O

<sup>1</sup> Aqua-Hot® heat exchanger provides both heated air and water. <sup>2</sup> Replaces standard 540-Amp Hour Battery Kit

### PLUMBING

- Aqua-Hot® 125 Modular Heat Exchanger <sup>1</sup>
- Water Heater Bypass System
- Water Filter
- Water Pump
- Additional Water Inlet on Exterior for City Water Connection and Tank Fill
- Low-point Water Drain Lines
- Gravity Water Fill
- Exterior Water Fill Valve
- SeeLevel™ Tank Monitor
- Fresh Water Hookup for City Water and Tank Fill
- Sewer Hose Storage
- Galley Sink Drain Macerator Pump
- Fresh Water Recirculation System (Showermiser™)

<sup>1</sup> Aqua-Hot® heat exchanger provides both heated air and water.

### EXTERIOR

- (1) Girard® Side-mounted Powered Patio Awning with Integrated LED Lighting
- Low-Profile Roof Rack
- Tinted Acrylic Windows
- Single-Row Low-Profile Light Bar
- Exterior Patio Light
- Fog Lights
- LED Lights Under Exterior Running Boards
- Heated, Electrically Adjustable Side-view Mirrors
- Screen Door Package <sup>1</sup>
- Fixed Side-Mounted All-Welded Ladder
- Rear Mud Guards
- Low-Profile Running Board with 12-Volt Lighting
- Fold-down Table
- ARB On-Board Air Compressor w/ Front and Rear Chucks

<sup>1</sup> Includes screens for rear door and passenger side sliding door.

All options may not be available on every model. Because of progressive improvements and specifications, standard and optional equipment are subject to change without notice or obligation. Images shown are representations of paint layouts only and do not reflect all exterior features or options. Colors shown may slightly differ from colors on actual product. Colors of interior decor options shown may vary from colors on actual product. For a complete and up-to-date list of available options and specifications, visit [tiffinmotorhomes.com](http://tiffinmotorhomes.com).

For all information concerning the limited warranty provided by Tiffin, please refer to the full, written limited warranty set forth on the Tiffin website or held by our authorized dealerships.

FOR SALES CALL 256-356-8661 AND PARTS & SERVICE CALL 256-356-0261 OR VISIT [TIFFINMOTORHOMES.COM](http://TIFFINMOTORHOMES.COM)

105 2ND ST NW RED BAY, AL 35582 [f](https://www.facebook.com/tiffinmotorhomes) [i](https://www.instagram.com/tiffinmotorhomes)

All trademarks and logos are owned or used under license by Tiffin Motor Homes, Inc. and include, but are not limited to: TIFFIN®, MANY ADVENTURES. ONE DREAM™, ALLEGRO®, ALLEGRO BREEZE®, ALLEGRO RED®, PHAETON®, ALLEGRO BUS®, ZEPHYR®, WAYFARER®, ROUGHING IT SMOOTHLY®, OPEN ROAD®, BYWAY™, and associated logos and emblems.

Unauthorized use of any trademark of Tiffin Motor Homes, Inc. is strictly prohibited.

© Copyright 2024 Tiffin Motor Homes, Inc. Rev. 3/18/24

### INTERIOR

- Stargazer Interior Décor Package
- TecnoForm® Cabinetry
- Grey Nickel Plate Thermoplastic Polyolefin Lonseal® Flooring
- Dimmable LED Lighting
- Interior Multicolor Accent Lighting
- Carbon Monoxide Detector
- LPG Leak Detector
- Smoke Detector
- Fire Extinguisher
- Solar Shades
- Powered Roof Vents
- Solid Surface Countertop

### DRIVER'S COMPARTMENT

- Heated Leather Seats with Electronic Controls
- Swivel Bases for Driver and Passenger Seats
- Leather Wrapped Steering Wheel with Integrated Controls
- Keyless Start
- Rain Sensor for Windshield Wipers
- Automatic LED Headlights
- Parking Package with 360° View Camera
- Interior Rear-view Mirror
- Crosswind Assist
- Driver and Passenger Air Bags
- Blind Spot Monitoring System
- Emergency Call System
- Smartphone Integration For Apple Carplay® and Android™ Auto
- Mercedes-Benz® MBUX Multimedia System with 10.25" Touchscreen
- Tray for Smartphones with Charging Ports
- Intelligent Navigation
- Powered Windows
- Door-mounted Driver and Passenger Assist Handles
- Powered Door Locks
- Instrument Cluster with Color Display

### DINETTE AND LIVING AREA

- Space-Saving, Fully Adjustable, Luxury Jump Seat with Ultrafabrics® Montage (Seating for 4)
- Removable, Wall-mounted Swivel Table, and Overhead Cabinets

### DINETTE AND LIVING AREA OPTION

	GH1
Adventure Bar Work/Storage Solution (Removes Jump Seat)	O

### KITCHEN

- 12-Volt, 3.1-Cubic Foot Refrigerator with Freezer and Integrated Whiteboard
- Portable Single-burner Induction Cooktop
- 12-Volt Roof Vent Fan
- Stainless Steel Single Bowl Sink and Faucet with Built-in Sprayer
- Galley Overhead Cabinets with Rigid Aluminum Frame
- Removable Counter Extension

### BEDROOM

- 49" x 79" Power Lift Bed with Gear Garage Below

### BATHROOM

- 24" x 36" Wet Bath with Toilet Platform
- Handheld Shower Head
- Shower Skylight
- Cassette Toilet
- Dry-roll Toilet Paper Dispenser
- Roof Vent Fan
- Water-Tight Storage Compartment
- Fresh Water Recirculation System (Showermiser™)



For a complete and up-to-date list of available options and specifications, scan the QR Code with your mobile device or visit [tiffinmotorhomes.com](http://tiffinmotorhomes.com).