

DAYBREAK

DAMON MOTOR COACH

Colton RV & Marine
3122 Niagara Falls Blvd
North Tonawanda, NY 14120
(716) 694-0188
www.ColtonRV.com

Colton RV & Marine
3443 Southwestern Blvd.
Orchard Park, NY 14127
(716) 957-3250
www.Coltonrv.com



2008

LIFE BEGINS AT DAYBREAK.

The vagabond life. Going where you want to go and doing what you want to do, when you want to do it. It's life close to nature and close to loved ones. It's that relaxed cup of coffee by the lake. And it's life in one of the best motorhomes ever built — DayBreak by Damon.

A DayBreak motorhome is amazingly affordable — with an array of standard features and a flair for style unmatched by anything else in its price range. It's richly appointed with a long list of amenities you would typically find on higher-end vehicles.

And with all of this value, DayBreak is, a big, full-size, full-throttle wide-body with all the power and performance you're ever likely to need.

If you're thinking of jumping on board the RV experience and leaving boredom behind, DayBreak is the perfect place to start.

DayBreak is even more value-packed for 2008. Here are just a few of the highlights: A new floorplan with a king-size bed and a 26" LCD TV; two new décor packages — Morro Cove and Redwood Creek (along with popular Hickory Pointe from last year); a beautiful streamlined front cap; and a one-piece tinted windshield that improves the driver's vision and safety and provides a panoramic view of the road. A bigger 7" backup monitor system is also new for 2008, as are new furniture and valance packages. Big, beautiful faux leather captain's chairs recline and swivel for added comfort — a great standard feature.



A.



Deluxe Graphics

A. The living is easy in the vast DayBreak interior. The wide-body style is open and airy, plus the spacious slideouts give you even more "living" room.

B. Beautiful hardwood cabinets highlight the gourmet kitchen. Notice all of the storage space.

C. New captain's chairs are contemporary, comfy and adjust to your most comfortable driving position. All controls are easy to see and operate. There's a terrific AM/FM/CD player, MP3 compatible, to keep you entertained. And the backup monitor and camera increase safety and driver confidence.



B.



C.

Standard features add value to your motorhome. And DayBreak is as good as gold when it comes to standards — offering more than just about any competitive model in its price range.

THE GOLD STANDARD.

The side-mounted patio awning offers a cozy courtyard area that's a welcome respite from the hot summer sun. Automatic leveling jacks with added touchpad controls assure trouble-free operation. The heavy-duty trailer hitch lets you haul 5,000 pounds of whatever — fishing boat, trailer, even a "dinghy" car. An AM/FM radio and CD player in the dash area is MP3 ready. Plus the 27" color TV and (new this year) Toshiba® DVD package with player and control center let you enjoy your favorite shows and movies whenever the mood strikes you.



Tuscan Sand (optional)

A. The bunk beds are a terrific family option — especially if your family is a big one with small ones. These beds, plus the master bedroom, mean you can sleep four comfortably. And that doesn't include Damon's Dream Dinette that easily converts to a full-size bed for even more cozy sleeping options.

And you have storage aplenty. The oversized solid wood dresser and wardrobe (behind those beautiful mirrored doors) are elegant and well designed.

B. You'll find more storage in the solid wood lower cabinet drawers.

C. And even more storage outside in the huge pass-through storage compartments.

D. Lots of beautiful wood, and storage, too, in the generous bathroom.

E. You'll find a handy giant pantry next to the refrigerator double doors which include raised panel solid wood fronts. Pantry doors offer convenient full extension glides so you can see what's in the way back (which is usually what you're looking for).

F. The LCD TV in the bunk area will keep the kids entertained and occupied.



A.



B.



D.



E.



C.



F.

BEYOND COMPARISON.

There is really no comparison between DayBreak and the competition. DayBreak is simply head and shoulders above everybody else. Just check out the paint package, the décor treatments and especially the floor plans and you'll agree.

DÉCOR

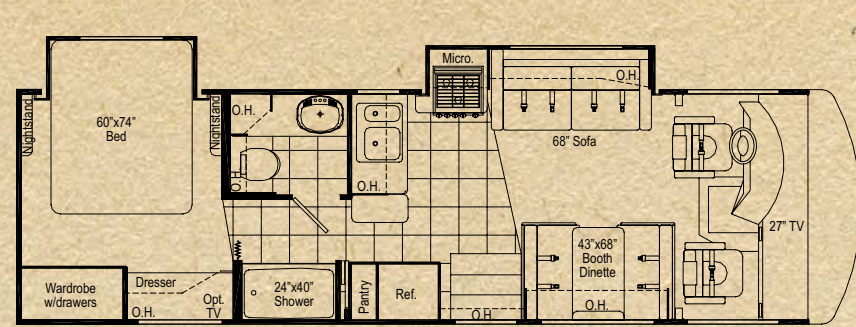
Several treatments, including a few new ones, make our décor packages harder than ever to choose. Everything is coordinated — fabrics, flooring, rich hardwood cabinetry and window treatments — to harmonize with DayBreak's surroundings and present a tasteful, timeless environment.

FLOOR PLANS

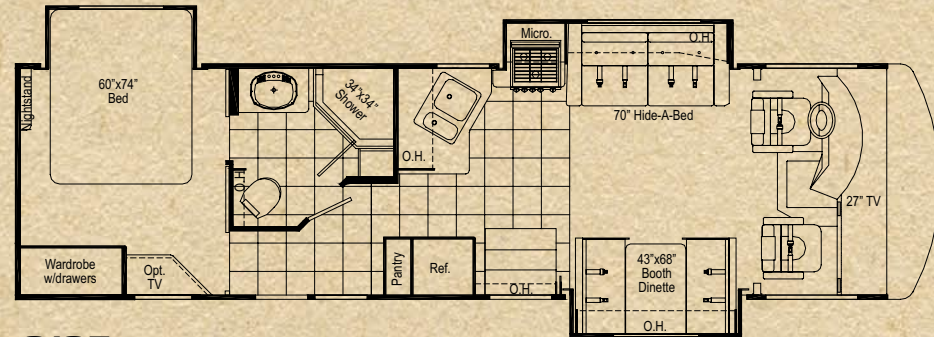
Just take a look at all of our floor plan options, especially the new 3578 plan with a king-size bed and LCD TV. You'll love it. All are smartly designed to provide the most spacious comfort and unsurpassed motorhome living.

PAINT

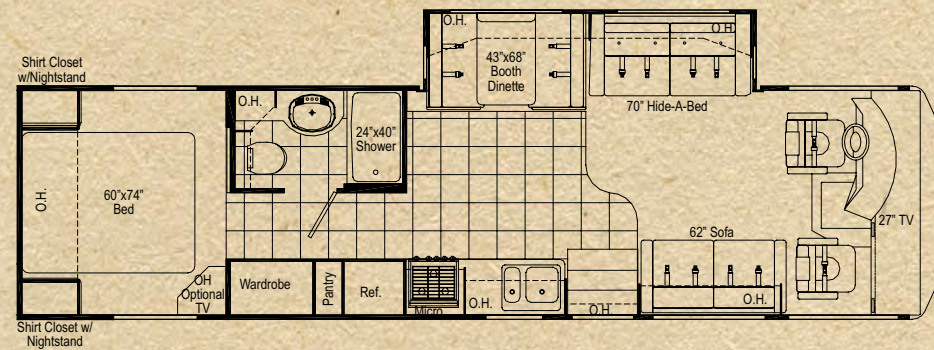
DayBreak's exterior paint package offers a wonderfully fluid, sweeping appearance. The bold, clean graphics are contemporary and eye-catching — far beyond what the competition offers.



3070
Living room and bedroom slideouts.
Private bath and queen bed.



3135
Triple slides: one in bedroom and opposing slides in living room. Full walk through bath with separate entrance from master bedroom.



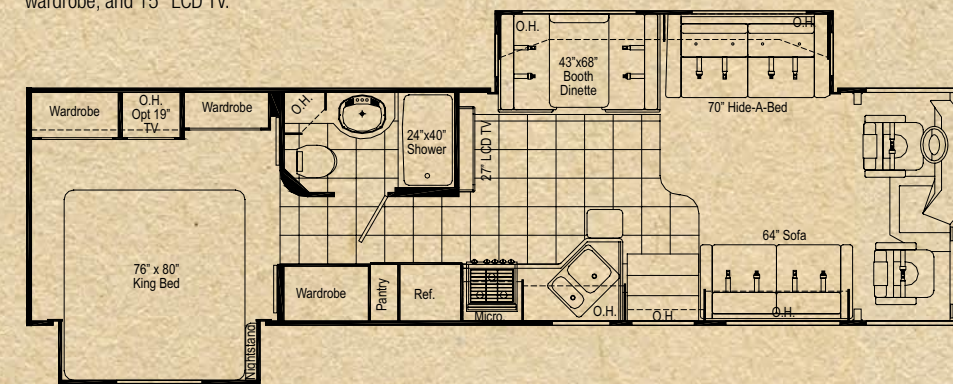
3270
Two sofas, living room slideout and private bath.



3274
Living room slideout, super bedroom slideout which includes wardrobe, private bath and shower.



3276
Living room slideout, super bedroom slideout which includes bunk beds and wardrobe, and 15" LCD TV.



3578
Sleep area for a family of 8, king size bed, private side bath, large kitchen with pantry and 27" LCD flat screen TV.

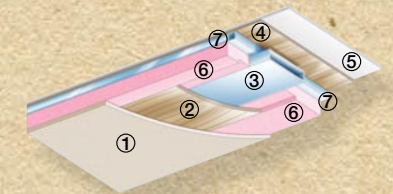
OUR "GOLDEN THREAD" — "VALUE BY DESIGN."

Damon has a golden thread that weaves its way into everything we do.

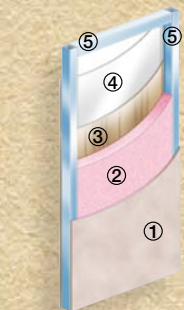
When we design motorhomes, we always design more standard features and value into them than our competitors. "Value by Design" we call it. It's our guiding principle, our way of doing business. When we offer more of your favorite amenities standard, we become more efficient. Construction is more streamlined. And you get more motorhome. For less.

"Value by Design." It's more than a golden thread, more than a slogan; it's our way of delivering more motorhome and value for less money, by design.

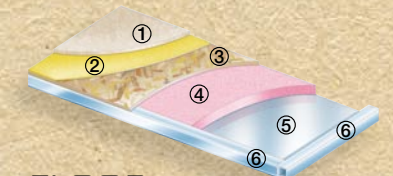
DAYBREAK CONSTRUCTION



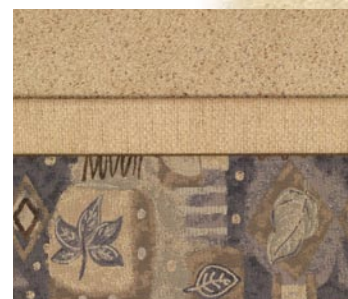
- ROOF**
- ① Padded ceiling
 - ② Lauan (wood)
 - ③ Air conditioning duct
 - ④ Insulation
 - ⑤ Aluminum frame
 - ⑥ Lauan (wood)
 - ⑦ TPO roofing



- SIDEWALLS**
- ① Interior panel
 - ② 1-1/2 block foam insulation
 - ③ Lauan backer
 - ④ Exterior fiberglass
 - ⑤ Aluminum frame (tubing)



- FLOOR**
- ① Carpet
 - ② Padding
 - ③ Structurwood® floor
 - ④ Insulation
 - ⑤ Galvanized metal
 - ⑥ Steel frame (tubing)



Morro Cove



Redwood Creek



Hickory Pointe



Cherry



Honey Maple

DAYBREAK STANDARD SPECIFICATIONS AND FEATURES

Exterior

Wide-body design
Rear ladder
Fiberglass front and rear caps
Side-mounted patio awning
Side-mounted awning over slideout(s)
White smooth fiberglass exterior with deluxe graphics
Radius-cornered domed TPO roof
Locking exterior storage doors
White-trimmed, radius-topped entrance door with deadbolt lock and black-trimmed window with shade and valance
Black-framed, radius-cornered windows
Patio light
Easy-to-clean, lighted, rotocast storage compartments
Full basement pass-through storage compartments

Chassis

Layer of neoprene vibration dampener
Stainless-steel wheel liners – Ford
Stainless-steel wheel liners – Workhorse (3070 and 3270 only)
Aluminum wheels with center hubs and lug nut covers – Workhorse (N/A on 3070 and 3270)
Front and rear mud flaps
Trailer hitch (5,000 tow/500 tongue lbs.)
Under-hood light
Emergency start circuit
Automatic transmission with overdrive
Automatic leveling jacks with touchpad controls

Entry

Double electric exterior entrance step
Battery access in stairwell

Cockpit

Vinyl covered dash with pod
MP3 compatible AM/FM/CD player (single-disc, in-dash)
Cruise control
Tilt steering wheel
Map light (single pancake)
Dash fans
Tinted wraparound one-piece windshield
Windshield privacy shade
Side-mounted power mirrors with heat
Reclining swivel faux leather captain's chairs
3-point, wall-mounted seat belts
Sun visors
Electronically controlled dash air conditioning
7" backup monitor system with audio
Drink holders

Living Area

Sofa bed (N/A on 3135, 3274 and 3276)
Hide-a-bed (N/A on 3070)
Lambrequin window treatments
Mini blinds throughout
100% nylon carpet with stain treatment and pad
27" color TV with full-function remote in front overhead with antenna, booster and co-ax connection (N/A on 3578)
26" color LCD TV with full-function remote with antenna, booster and co-ax connection (3578 only)

Kitchen

Refrigerator: flush-mounted, double-door
Refrigerator: raised-panel hardwood front (cherry or honey maple)
3-burner range with oven
Range cover

Microwave oven
Lighted power range hood
Monitor panel with LPG readout
Sink covers
Solid-wood, raised-panel cabinet doors (upper and lower)
Linoleum accented walk area
Booth dinette
Mini blind (always in kitchen)
Wallpaper border
Ball bearing drawer guides

Bedroom

Standard foam mattress
Bunk beds (3276 only)
Bedsprad and pillow shams with pillows (except bunk beds)
TV area and co-ax connection
15" LCD color TV (3276 only)
Mini blinds (always at bunk beds)
Framed mirror over bed

Bathroom

Shower with surround
Shower door
Skylight in shower
Power vent
Hand-flush toilet
Medicine cabinet
Hardwood-framed mirror
Linoleum throughout
Wallpaper border

Utilities

Air conditioner: Carrier® 13,500-BTU ducted central (front)
Remote thermostatically controlled air conditioning
Furnace: 31,000-BTU electronic ignition, floor-ducted with surface-mounted door

Water heater: 6-gallon gas with electronic ignition and surface-mounted door
Water heater bypass kit
Pre-wired for generator with auto changeover
Generator: 5.0 kW Generac® Impact™ (30-amp service only)
Converter: 60-amp
Dual 6-volt auxiliary batteries
Battery disconnect
30-amp, 120-volt service
Enclosed heated holding tanks
Black water tank flush
Telephone hookup
Pre-wired for roof-mounted satellite dish
Exterior GFCI receptacle
Carbon monoxide, LP gas and smoke detectors

Popular Options

Partial paint package
GelCoat poured sidewalls
Black-framed, dual-pane windows
Reclining swivel Flexsteel® faux leather captain's chairs
Sofa (faux leather) (3070, 3270 and 3578 only)
Hide-a-bed (faux leather) (N/A on 3070)
Day/night shades (except kitchen and at bunk beds)
Video package (DVD player and control center)
Refrigerator: large flush-mounted, double-door
Upgraded innerspring mattress
13" color TV (3070, 3135 and 3270 only)
19" color TV (3274, 3276 and 3578 only)
Air conditioner: Carrier® 13,500-BTU ducted central (rear)
Generator: 5.5 kW Onan® Marquis Gold™
50-amp, 120-volt service (requires 5.5 kW Onan® generator)
Exterior shower

| Weights and Measures | 3070 | 3135 | 3270 | 3274 | 3276 | 3578 |
|-------------------------------------|----------------|----------------|----------------|----------------|----------------|----------------|
| Chassis | Workhorse/Ford | Workhorse/Ford | Workhorse/Ford | Workhorse/Ford | Workhorse/Ford | Workhorse/Ford |
| Wheelbase | 190 | 208 | 216.5 | 228 | 228 | 228 |
| Overall length | 30'11" | 33'8" | 34'8" | 35'2" | 35'7" | 36'1" |
| Overall width | 101" | 101" | 101" | 101" | 101" | 101" |
| Overall height with AC | 12'0" | 12'0" | 12'0" | 12'0" | 12'0" | 12'0" |
| Std. weight (approx. lbs.) | 14,923/15,183 | 15,731/16,074 | 15,572/15,814 | 16,655/17,163 | 17,313/16,780 | 17,369*/16,969 |
| GVWR | 18K/20.5K | 21.2K/20.5K | 18K/20.5K | 21.2K/20.5K | 21.2K/20.5K | 21.2K/20.5K |
| GCWR | 22K/26K | 22K/26K | 22K/26K | 26K/26K | 26K/26K | 26K/26K |
| Fresh water (approx. gal.) | 65 | 65 | 65 | 65 | 65 | 65 |
| Grey/black water (approx. gal.) | 47/47 | 47/47 | 47/47 | 47/39 | 47/39 | 47/39 |
| Water heater (approx. gal.) | 6 | 6 | 6 | 6 | 6 | 6 |
| LP (lbs.) | 81 | 81 | 81 | 81 | 81 | 81 |
| Sleeping capacity | 4 | 5 | 5 | 4 | 6 | 6 |
| Exterior storage capacity (cu. ft.) | 116 | 93 | 163 | 174 | 131 | 166 |
| Interior drawers | 12 | 13 | 10 | 17 | 15 | 13 |
| Interior drawer capacity (cu. ft.) | 12 | 8.3 | 8.5 | 13.5 | 10 | 14 |
| Fuel capacity (approx. gal.) | 75 | 75 | 75 | 75 | 75 | 75 |

*Estimated weight



P.O. Box 2888 • Elkhart, IN 46515
Customer Service: 800-860-3812
Sales Department: 800-860-5658
www.DamonRV.com



DC 7/07 © 2007 Damon Motor Coach Printed in U.S.A.

Due to constant product improvements, the specifications, component parts and standard/optional equipment are subject to change without notice or obligation. Product photography or diagrams may show equipment that is optional. Damon Motor Coach reserves the right to make changes in prices and models and to discontinue models without notice or obligation. Components, parts or chassis may have been manufactured at times other than the model year indicated. All capacities are approximate and dimensions are nominal. All dry weights are based on standard model features and do not include optional features or equipment. Various RV components and features may differ to conform to local codes. Due to EPA environmental restrictions, engine power and torque ratings may change mid-year.