

Outback

Designed for a Lifetime of RVing



DSI
RVDA DEALER
SATISFACTION INDEX
AWARD WINNER

TRAVEL TRAILERS AND FIFTH WHEELS

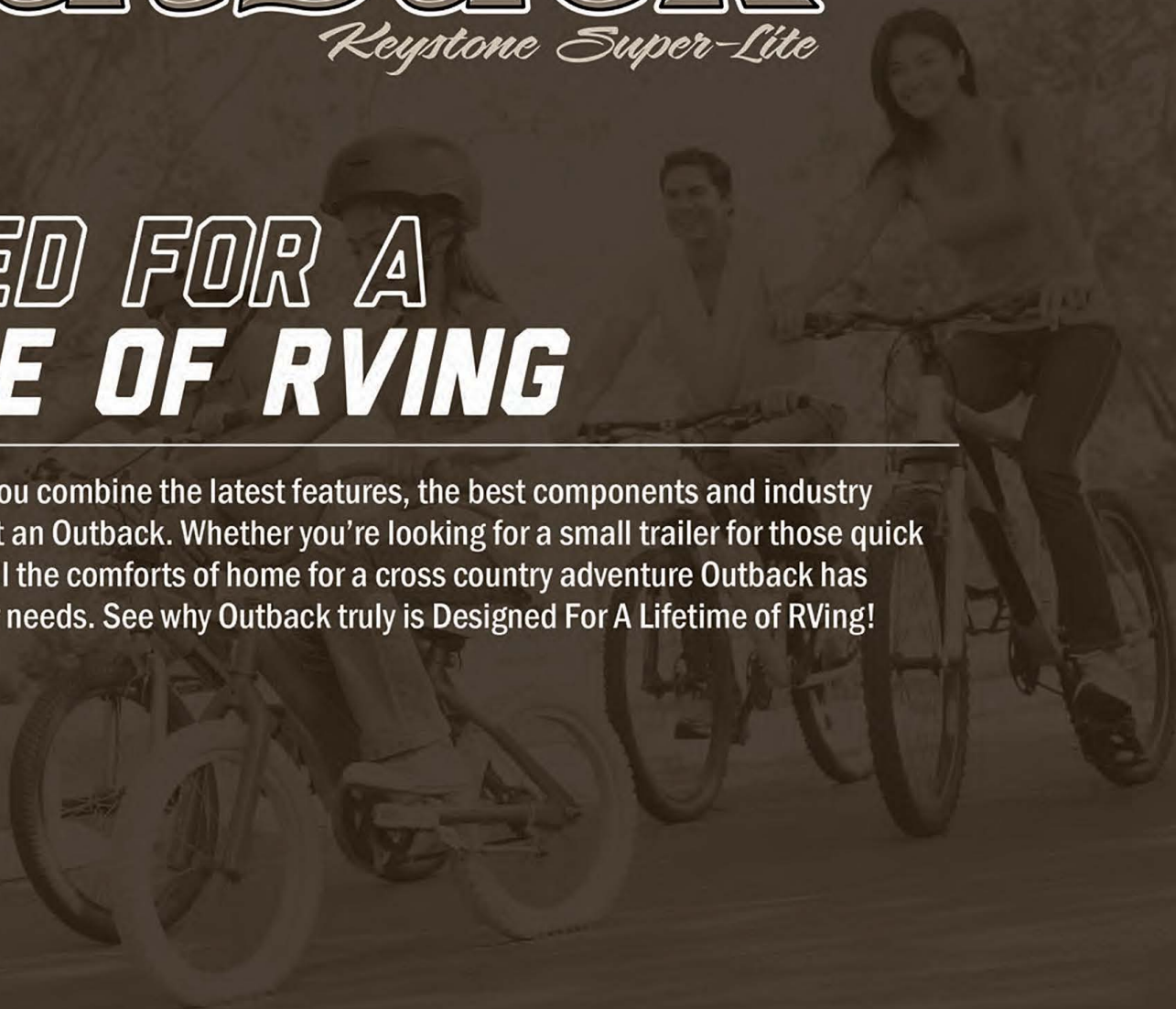
 **Keystone RV
Company**

Outback

Keystone Super-Lite

DESIGNED FOR A LIFETIME OF RVING

What do you get when you combine the latest features, the best components and industry leading quality? You get an Outback. Whether you're looking for a small trailer for those quick weekend getaways or all the comforts of home for a cross country adventure Outback has something that fits your needs. See why Outback truly is Designed For A Lifetime of RVing!





OUTBACK *Terra-Lite* TERRAIN

TOPS IN TOWING. Outback Terrain provides the comfort you need without all the weight. Get the maximum amount of space while minimizing your length in one of the Outback Terrain rear slide models. You will find towing an Outback Terrain is a breeze!



pages 4-8



OUTBACK *Super-Lite* TRAVEL TRAILERS

COMFORTABLY CAMPING. Maximum features, maximum storage and maximum comfort. You are going to find Outback Travel Trailers are designed for a lifetime of RVing.



pages 9-14



OUTBACK *Super-Lite* FIFTH WHEELS

SIZE MATTERS. All the room, storage and tow ability you expect in a 5th wheel in lengths that are manageable and easy to tow. Perfect for many half ton trucks!



pages 15-18





OUTBACK *Terra-Lite*
TERRAIN



299TBH BEDROOM



299TBH BUNK BEDS

OUTBACK TERRAIN TRAVEL TRAILERS



299TBH SHOWN IN TEAK DECOR

AERODYNAMIC FRONT PROFILE



15" TIRES

ENCLOSED UNDERBELLY

Outback TERRAIN TOPS IN TOWING

5

OUTBACK TERRAIN TOP FEATURES



Vaulted Ceilings adds interior height and increased cabinet space



Activity Lights on both sides provides abundant exterior lighting



Magnetic Door Catches are easy to use and will not break



32" High Definition Televisions are standard in most Outback Terrain models.



Power awning with LED strip light



No crank up Omni HDTV antenna



Enclosed underbelly



Steel truss roof system

OUTBACK TERRAIN TRAVEL TRAILERS

www.keystonerv.com/Outback-Terrain





Outback
TERRAIN

ROOF

1. Seamless One-Piece EPDM Tan Colored, Rubber Roof
2. Plywood Decking
3. R-14 Blanket Insulation
4. 5" Radius, Galvanized Steel Roof Trusses
5. Full Length Drip Rail

SIDEWALL

6. Gel-Coated Oyster Fiberglass Exterior
7. 1/8" Luan Wall Backing
8. R-7 Solid Block Foam Insulation
9. 1 1/2" Box Welded Aluminum Frame Walls
10. Interior Decorative Wall Board
11. Diamond Plate on Front Cap

FLOOR

12. Residential Grade Stain Resistant Carpet & Linoleum
13. Carpet Pad
14. Floor Decking
15. R-10 Block Foam Insulation
16. Welded Aluminum Floor Joists
17. Bottom Layer Luan Decking
18. Darco Vapor Barrier Wrap
19. One Piece, Polypropylene Enclosed and Heated Underbelly
20. In Floor Residential Ducted Heat

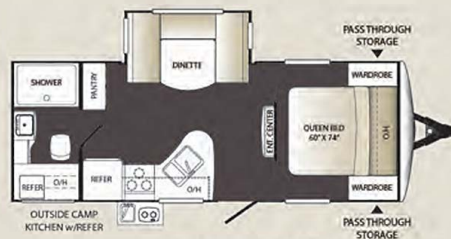
CHASSIS

21. 6" Powder Coated Steel I-Beam Frame (8" frame models - 299TBH and larger)
22. Leaf Spring Suspension System
23. EZ Lube Axles with 10" Electric Brakes
24. 15" Radial Tires/Aluminum Rims
25. 3-Step Entry Mounted to I-Beam Frame
26. Step Light

OUTBACK TERRAIN TRAVEL TRAILERS
CONSTRUCTION



210TRS



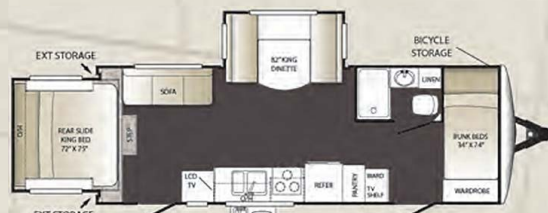
220TRB



230TRS



245TBH



250TRS



260TRS



265TRB



273TRL



299TBH

SPECIFICATIONS

	210TRS	220TRB	230TRS	245TBH	250TRS	260TRS	265TRB	273TRL	299TBH
SHIPPING WEIGHT	4710	5153	5087	TBD	5500	5758	6070	5734	6362
CARRYING CAPACITY	2290	1847	2413	TBD	2000	2042	1730	2066	2138
HITCH WEIGHT	510	610	555	TBD	515	675	650	675	790
EXTERIOR LENGTH	22' 10"	26' "	27' 0"	28' 5"	28' 5"	29' 3"	30'	30'	32' 6"
EXTERIOR WIDTH	8'	8'	8'	8'	8'	8'	8'	8'	8'
EXT. HEIGHT - A/C TOP	11' 4"	11' 4"	11' 4"	11' 4"	11' 4"	11' 4"	11' 4"	11' 4"	11' 4"
FRESH WATER (GAL.)	43	43	43	43	43	43	43	43	43
WASTE WATER (GAL.)	30	30	30	30	30	30	30	30	30
GRAY WATER (GAL.)	30	30	30	60	60	30	60	30	60
LP CAPACITY (LBS.)	40	40	40	40	40	40	40	40	40
AWNING	14'	12'	19'	14'	19'	15'	18'	16'	19'



OUTBACK TERRAIN STANDARDS AND OPTIONS

LIVING AREA

- Deluxe morgan cherry cabinetry
- 36" flush floor slides
- Large panoramic windows
- Pre-drilled and screwed cabinetry
- Custom designed box valance
- Linoleum flooring
- Large wood side drawers with steel guides
- Large overhead cabinets
- 32" HDTV (most models)
- Pleated shades
- Vaulted ceiling
- Decorative glass inserts
- Batten ceiling accents

KITCHEN

- Deep single basin sink with 3" drains
- Two door 6 cu. ft. refrigerator
- High-rise faucet
- 3 burner range with oven
- Microwave
- Upgraded laminate countertops

BEDROOM

- Deluxe innerspring mattress
- TV hook-up
- Jalousie windows for maximum ventilation
- Residential bedspread
- His and her lights
- Bedroom speakers
- 2 Full length wardrobes

BATHROOM

- Power roof vent
- Skylight over tub
- Tub surround
- Garden shower (most models)
- Deluxe medicine cabinet
- Large linen closet (most models)

APPLIANCES

- AM/FM/CD stereo with DVD player, MP3 hookup and bluetooth enabled (N/A 210, 230, 250, 260)
- Two door 6 cu. ft. refrigerator
- 3 burner range with oven
- Six gallon gas/electric DSI water heater by pass with 16.2 gallons per hour "quick recovery"
- 13,500 BTU AC wall thermostat

- 30,000 BTU furnace
- Microwave

EXTERIOR STANDARDS

- Oyster colored fiberglass
- Black framed tinted jalousie safety glass windows
- Triple radius entry step
- Black tank flush
- Extra large baggage doors, 1" thick with continuous hinge and rubberD-seal
- Extended drip caps and full length drip rail
- Porch light
- Hitch light
- Weather encapsulated body trim
- Exterior 120V receptacle
- Heated enclosed underbelly including tanks and valves
- LP tank cover
- Automotive style fender skirts
- Double welded dual battery brackets
- Exteriorspeakers
- Easy lube axles
- Outside camp kitchen
- Exterior quick connect LP hook-up
- Stabilizer jacks (4)
- Satellite prep
- Magnetic door holders
- Aluminum rims

WALLS - CONSTRUCTION

- Welded aluminum walls with R7 insulation
- Solid block foam insulation

ROOF

- 5" Radius, vaulted galvanized steel, tapered trusses on 16" centers
- One-piece TPO roof (tan)
- R14 blanket insulation

FLOOR

- 2" welded aluminum laminated floor
- R10 block foam insulation
- Wrapped vapor barrier
- Polypropylene enclosed heated underbelly encloses tanks and valves

CHASSIS

- Leaf spring equalizing suspension system
- Powder coated I-beam
- EZ lube axles

- 10" electric brakes
- 15" radial tires
- 15" spare tire, carrier & cover

UTILITIES

- 55-amp converter
- 20 lbs. LP bottles with auto changeover (2)
- Omni Directional TV antenna
- 30-amp shore power line
- LP leak detector
- Smoke detector
- Carbon monoxide detector
- Fire extinguisher
- Tinted safety glass windows
- Break-awayswitch
- Safety chains
- Manual slide backup on all electric slide outs
- Carbon monoxide detector

TERRAIN EXTERIOR GROUP*

- Colored fiberglass
- Laminated aluminum sidewalls
- Tinted safety glass windows
- Omni TV antenna
- Cable TV/Sat prep
- 15" Radial tires w/spare tire
- Stabilizer jacks
- Black tank flush
- Heavy duty easy lube axles
- Outside camp kitchen (most models)
- Electric awning w/LED strip lights
- Fully enclosed and heated underbelly
- Exteriorspeakers
- Patio light

TERRAIN INTERIOR GROUP*

- Vaulted ceiling
- AM/FM/CD/DVD Player - bluetooth enabled (N/A 210, 230, 250, 260)
- 3 Burnerrange with oven
- 32" LCD HDTV (most models)
- Skylight in bath
- Ducted A/C
- Microwave oven
- Pleated shades
- 6 Gal. gas electric DSI water heater with 16.2 quick recovery
- Large double door refrigerator
- Deluxe sleeper sofa

* Denotes STD Build Options

DECOR



HEARTHSTONE



TEAK



SUMMIT





OUTBACK *Super-Lite* TRAVEL TRAILERS



326RL DUAL REFRIGERATORS



326RL BEDROOM WITH OPTIONAL
REST-N-READ TILT SLEEP SYSTEM



326RL PANTRY

Outback
Super-Lite

326RL SHOWN IN TEAK DECOR

OUTBACK TRAVEL TRAILER TOP FEATURES



LED Lights use less energy, offer a softer light and produce little heat.



JT Strong Arm Stabilizer System is standard and greatly reduces trailer movement while in use.



Slam Latch Baggage Doors close tightly every time and are held up by magnetic door catches!



USB Charging Ports are conveniently located in the living area and the bedroom.



Stainless steel appliances (with 8 cubic foot refrigerator)



Tri-Fold Sleeper Sofas are easy to set up, require no electrical service and provide comfortable nights rest.



Power Tongue Jacks are standard on all Outback trailers and greatly reduce set up time.



The Heated and Enclosed Underbelly extends the camping season and provides better tow ability.



Floor Lights offer safe and convenient night time lighting.



Home stereo system with operating app



Outside kitchen (323BH, 312BH, 302FBH)



Rear roof ladder



No crank Omni HDTV antenna



Walkable steel truss roof system



Power awning with LED strip light





ROOF

1. Seamless One-Piece TPO Tan Colored Roof
2. 3/8" Fully Walkable Wood Decking
3. R-14 Blanket Insulation
4. 5" Radius, Galvanized Steel Roof Trusses
5. Full Length Drip Rail

SIDEWALL

6. Gel-Coated Colored Fiberglass Exterior
7. 1/8" Luan Wall Backing
8. R-7 Solid Block Foam Insulation
9. 1 1/2" Box Welded Aluminum Frame Walls
10. Interior Decorative Wall Board
11. Painted Gel Coat Molded Fiberglass Front Cap w/ LED lights

FLOOR

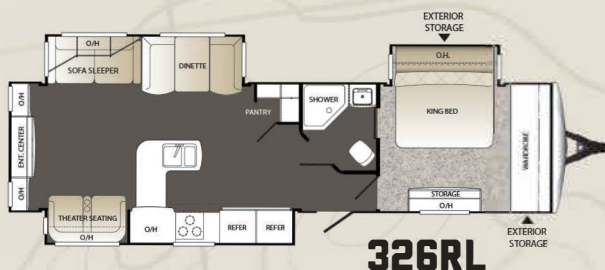
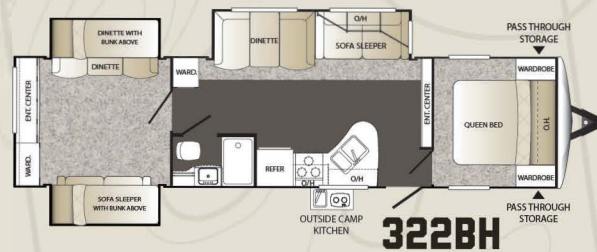
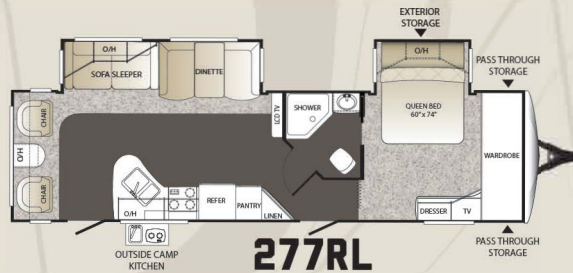
12. Residential Grade Stain Resistant Carpet and Linoleum
13. Carpet Pad
14. Floor Decking
15. R-10 Block Foam Insulation
16. Welded Aluminum Floor Joists
17. Bottom Layer Luan Decking
18. Darco Vapor Barrier Wrap
19. One Piece, Polypropylene Enclosed and Heated Underbelly
20. In Floor Residential Ducted Heat

CHASSIS

21. 8" Powder Coated Steel I-Beam Frame
22. Leaf Spring Suspension System
23. EZ Lube Axles with 10" Electric Brakes
24. 15" Radial Tires
25. 3-Step Entry Mounted to I-Beam Frame
26. Step Light

OUTBACK TRAVEL TRAILERS

CONSTRUCTION



SPECIFICATIONS

	277RL	298RE	312BH	316RL	322BH	323BH	324CG	326RL
SHIPPING WEIGHT	7320	7556	7915	7560	7990	8085	7825	8575
CARRYING CAPACITY	1680	1444	1585	1440	1930	1715	1975	1355
HITCH WEIGHT	870	925	1030	980	1120	1015	985	1130
EXTERIOR LENGTH	34' 10"	35' 2"	36'	35' 6"	36' 11"	36'	36' 10"	36' 11"
EXTERIOR WIDTH		8'		8'		8'		8'
EXT. HEIGHT - A/C TOP	10' 11"	10' 11"	10' 11"	10' 11"	10' 11"	10' 11"	10' 11"	10' 11"
FRESH WATER (GAL.)		53		53		53		53
WASTE WATER (GAL.)	34	34	34	34	34	34	34	34
GRAY WATER (GAL.)		68		34		68		68
LP CAPACITY (LBS.)	60	60	60	60	60	60	60	60
AWNING	19'	18'	18'	12'	18'	18'	18'	12'



OUTBACK TRAVEL TRAILER STANDARDS AND OPTIONS

LIVING AREA

- Upgraded furniture package
- Outback command center
- Deluxe morgan cherry cabinetry
- Lounge dinette
- 36" flush floor slides
- Large panoramic windows
- Pre-drilled and screwed cabinetry
- Custom designed box valance with soft curtains
- Linoleum flooring
- Large wood side drawers with steel guides
- Water soil, stain resistant fabrics
- Large overhead cabinets
- Residential tri-fold sleeper sofa
- 40" HDTV (N/A 277, 323)
- Pleated shades*
- Decorative wall lights*
- Vaulted ceiling
- Floor lights (2)
- USB charging port
- LED lighting
- Batten ceiling accent
- Tri-fold sofa sleeper

KITCHEN

- Deep double basin sink with 3" drains
- Trash can storage*
- Two door 8 cu. ft. refrigerator
- High-rise faucet*
- Utensil tray
- 3 burner range with oven*
- Microwave
- Upgraded laminate countertops
- Paper towel holder
- Stainless steel appliances

BEDROOM

- Deluxe innerspring mattress
- TV hook-up
- Jalousie windows for maximum ventilation
- Residential bedspread
- Deluxe headboard
- His and her lights
- Bedroom speakers
- 2 Full length wardrobes
- Recessed cubby storage w/110 volt outlets (most models)
- USB charging port

BATHROOM

- Power roof vent
- Skylight over tub
- Porcelain foot flush toilet
- Tub surround*
- Garden shower (N/A 312, 322)
- Deluxe medicine cabinet
- Large linen closet (most models)

APPLIANCES

- Stainless steel
- DVD player with bluetooth remote control app
- Two door 8 cu. ft. refrigerator
- 3 burner range with oven*
- Six gallon gas/electric DSI water heater by pass with 16.2 gallons per hour "quick recovery"*
- 13,500 BTU AC wall thermostat
- 30,000 BTU furnace
- Microwave

EXTERIOR STANDARDS

- Molded fiberglass front cap w/LED strip lights
- Black framed tinted jalousie safety glass windows
- Black tank flush
- Assist entry grab handle
- Extended drip caps and full length drip rail
- Two security lights (one on each side)*
- Porch light
- Hitch light
- Step light
- Weather encapsulated body trim
- Exterior 120 V receptacle
- Heated enclosed underbelly including tanks and valves
- LP tank cover
- Automotive style fender skirts
- Double welded dual battery brackets
- Exterior speakers
- Easy lube axles
- Outside camp kitchen (most models)*
- Exterior quick connect LP hook-up
- Stabilizer Jacks (4)
- LED Hitch lights
- Satellite prep
- Slam latch baggage doors w/magnetic door holders
- Rear ladder
- Power tongue jack
- JT strong arm jack stabilizers
- Black slide out endwalls
- Oyster colored sidewalls
- Water docking station
- Winterization hose kit

WALLS - CONSTRUCTION

- Welded aluminum walls with R7 insulation
- Solid block foam insulation

ROOF

- 5" Radius, vaulted galvanized steel, tapered trusses on 16" centers
- 3/8" roof decking
- One-piece TPO roof (tan)
- R14 blanket insulation

FLOOR

- 2" welded aluminum laminated floor
- R10 block foam insulation
- Wrapped vapor barrier
- Polypropylene enclosed heated underbelly encloses tanks and valves

CHASSIS

- Leaf spring equalizing suspension system
- Powder coated I-beam
- 10"- electric brakes
- 15" radial tires*
- 15" spare tire, carrier & cover*
- Aluminum rims*

UTILITIES

- 55-amp converter
- 30 lbs. LP bottles with auto changeover
- Omni directional hands-free TV/Radio antenna
- 50-amp shore power line
- LP leak detector
- Smoke detector
- Carbon monoxide detector*
- Fire extinguisher
- Tinted safety glass windows
- Break-away switch
- Safety chains
- Manual slide backup on all electric slide outs
- 12 Volt battery disconnect
- Carbon monoxide detector
- RVIA
- Radial Tires
- 15" spare tire, carrier, and cover
- Aluminum rims

OUTBACK DESIGNER PACKAGE*

- Wall border
- Cloth shower curtain (most models)
- Coat hooks (most models)
- Utensil rack
- Innerspring mattress
- Bedspread
- LP cover
- Pleated shades
- Decorative wall lights
- Trash can

OUTBACK COMFORT PACKAGE*

- 13,500 BTU ducted air conditioner
- TV antenna/cable
- AM/FM/CD stereo with bluetooth
- Microwave
- Entry handle

POPULAR OPTIONS

- Free-standing dinette (277, 298, 316, 324, 326)
- Second Air Conditioner
- 15,000 BTU Air Conditioner
- Fireplace (N/A 277, 323)

OUTBACK DIAMOND PACKAGE (OPTIONAL)

- Champagne medallion high gloss exterior fiberglass
- Fantastic fan
- Frameless windows
- Metal wrap awningw/LED lights
- Touch screen remote (controls slides, awning, exterior lights)
- Theaterseating (298, 326)
- Solid surface countertops w/pullout faucet
- Outback Rest-n-Read tilt sleep system

* Denotes STD Build Options



DECOR



HEARTHSTONE



TEAK



SUMMIT



OUTBACK *Super-Lite* FIFTH WHEELS



280FRE KITCHEN



280FRE BATHROOM



280FRE BEDROOM WITH QUEEN SIZE BED



280FRE SHOWN IN TEAK DECOR

OUTBACK FIFTH WHEEL TOP FEATURES

15



Vaulted Ceilings and front profile increase head room to 6' 10" at the end of the bed!



JT Strong Arm Stabilizer System is standard and greatly reduces trailer movement while in use.



Large Pass Through Storage compartments utilize Slam Latch Baggage Doors for easy access to all of your belongings.



USB Charging Ports are conveniently located in the living area and the bedroom.



Tri-Fold Sleeper Sofas are easy to set up, require no electrical service and provide comfortable nights rest.



The Utility Center contains most of your unit controls in one easily accessible location



The Heated and Enclosed Underbelly extends the camping season and provides better tow ability.



Home stereo system with operating app



LED Lights use less energy, offer a softer light and produce little heat.



Rear roof ladder



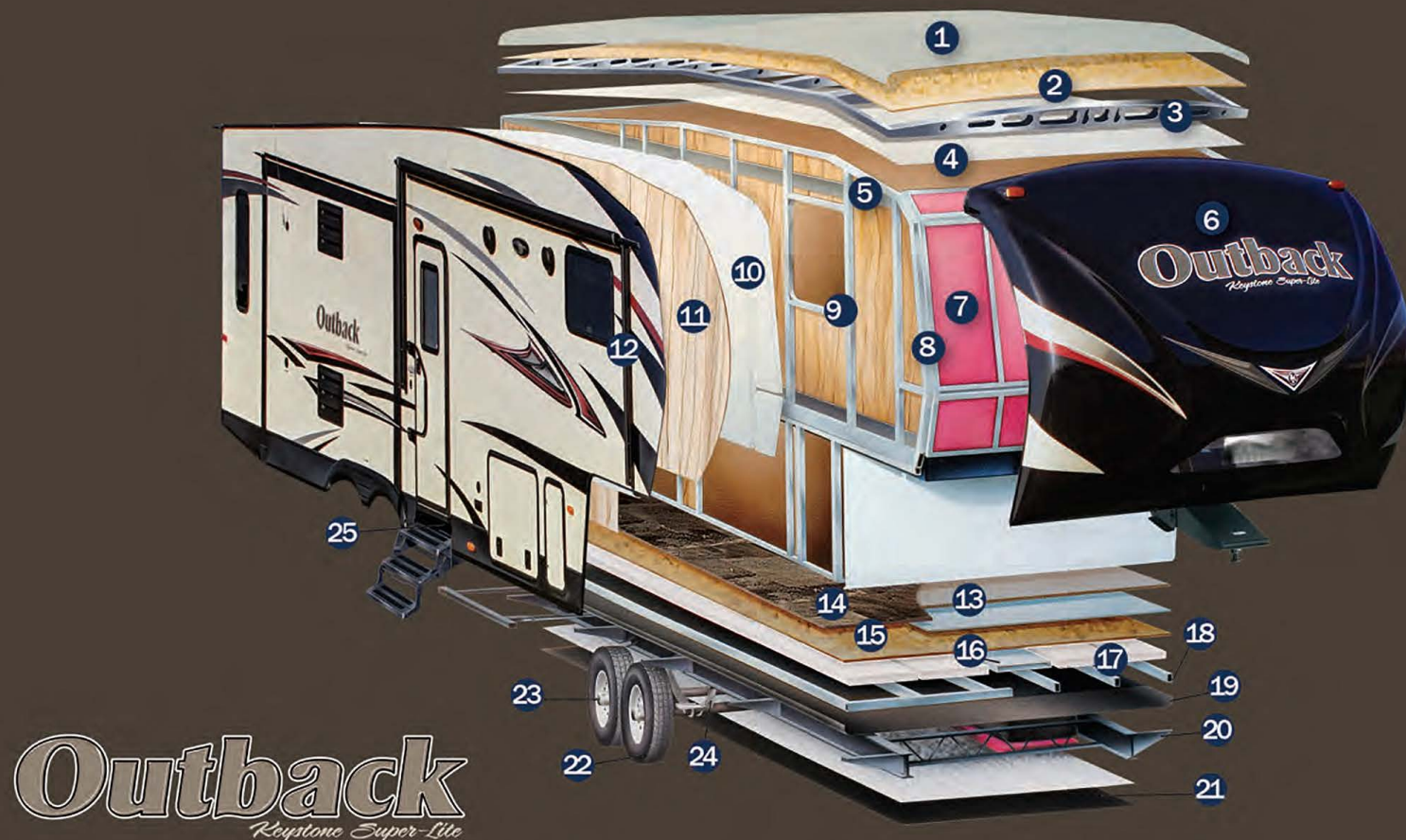
No crank Omni HDTV antenna



Walkable steel truss roof system

OUTBACK FIFTH WHEELS





Outback
Keystone Super-Lite

ROOF

1. Seamless One-Piece EPDM Rubber Roof
2. 3/8" Fully Walkable Wood Decking
3. 5" Radius Galvanized Steel Roof Trusses
4. 1/8" Vinyl Protected Ceiling Panel

SIDEWALL

5. Metal Backing EGG Strips
6. Aerodynamic Radius High Gloss Front Fiberglass Cap w/ Hitch Vision
7. R-9 Fiberglass Insulation End Walls
8. Box Welded Aluminum Side and End Walls
9. Corner Radius Window Inserts
10. R-9 Solid Block Foam Insulation
11. 1/8" Luan Wood Backing
12. Gel Coated Fiberglass Exterior

FLOOR

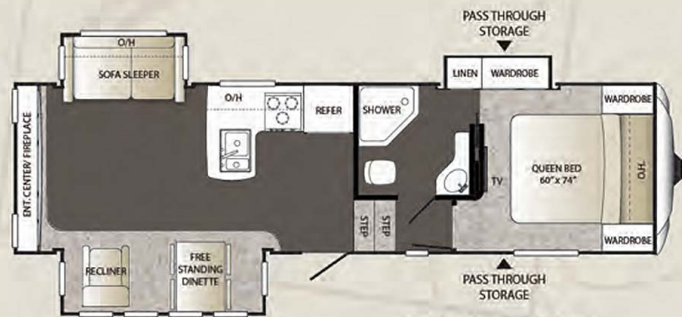
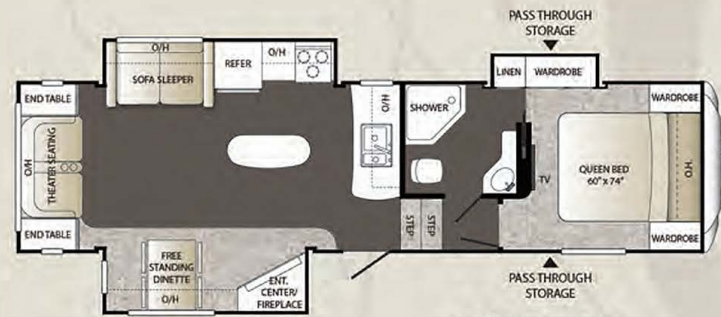
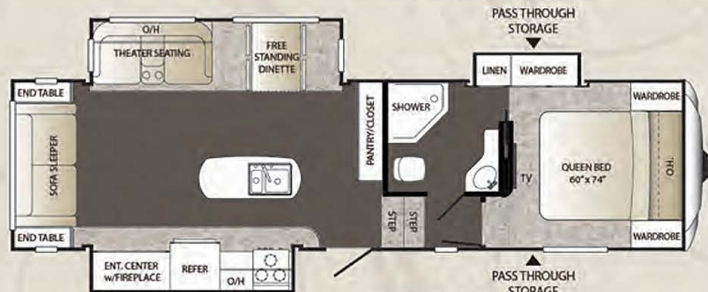
13. High Density Residential Carpet w/ Stain Resistance
14. Residential Grade Linoleum
15. Laminated Floor Decking
16. Residential In Floor Ducted Heat
17. Hi-Density Block Foam Insulation
18. Welded Box Frame Aluminum Floor Joists,
19. Darco Wrap Vapor Barrier

CHASSIS

20. 8" to 10" "Powder Coated" Steel I-beam Frame
21. One Piece, Polypropylene Enclosed and Heated Underbelly
22. 16" Radial Tires with Electric Brakes (N/A Sydney Super-Lite)
23. EZ Lube Axles
24. Leaf Spring Suspension System
25. Entry Step Light

OUTBACK FIFTH WHEELS

CONSTRUCTION

**280FRE****286FRL****296FRS****302FBH****315FRE**

SPECIFICATIONS

	280FRE	286FRL	296FRS	302FBH	315FRE
SHIPPING WEIGHT	8215	8650	8572	8815	8735
CARRYING CAPACITY	2275	1835	1928	1685	1740
HITCH WEIGHT	1690	1685	1715	1780	1675
EXTERIOR LENGTH	31'	32' 6"	32' 6"	33'	33'
EXTERIOR WIDTH	8'	8'	8'	8'	8'
EXT. HEIGHT - A/C TOP	13' 1"	13' 1"	13' 1"	13' 1"	13' 1"
FRESH WATER (GAL.)	53	53	53	53	53
WASTE WATER (GAL.)	34	34	34	34	34
GRAY WATER (GAL.)	68	34	68	68	68
LP CAPACITY (LBS.)	60	60	60	60	60
AWNING	15'	15'	15'	15'	15'



OUTBACK FIFTH WHEEL STANDARDS AND OPTIONS

LIVING AREA

- Upgraded furniture package
- Outback command center
- Deluxe morgan cherry cabinetry
- Lounge dinette
- 36" flush floor slides
- Large panoramic windows
- Pre-drilled and screwed cabinetry
- Custom designed box valance with soft curtains
- Linoleum flooring
- Large wood side drawers with steel guides
- Water soil, stain resistant fabrics
- Large overhead cabinets
- Residential tri-fold sleeper sofa
- 40" HDTV
- Pleated shades*
- Decorative wall lights*
- Vaulted ceiling
- Floor lights (2)
- USB charging port
- LED lighting
- Batten ceiling accent
- Tri-fold sofa sleeper
- Home stereo system with operating app

KITCHEN

- Deep double basin sink with 3" drains
- Trash can storage*
- Two door 8 cu. ft. refrigerator
- High-rise faucet*
- Utensil tray
- 3 burner range with oven*
- Microwave
- Upgraded laminate countertops
- Paper towel holder
- Stainless steel appliances

BEDROOM

- Deluxe innerspring mattress
- TV hook-up
- Jalousie windows for maximum ventilation
- Residential bedspread
- Deluxe headboard
- His and her lights
- Bedroom speakers
- 2 Full length wardrobes
- USB charging port

BATHROOM

- Power roof vent
- Skylight over tub
- Porcelain footflush toilet
- Tub surround*
- Garden shower
- Deluxe medicine cabinet
- Large linen closet (most models)

APPLIANCES

- DVD player with bluetooth remote control app (most models)
- Two door 8 cu. ft. refrigerator
- 3 burner range with oven*
- Six gallon gas/electric DSI water heater by pass with 16.2 gallons per hour "quick recovery"*
- 13,500 BTU AC wall thermostat
- 30,000 BTU furnace
- Microwave

EXTERIOR STANDARDS

- Molded fiberglass front cap w/LED strip lights
- Black framed tinted jalousie safety glass windows
- Black tank flush
- Assist entry grab handle
- Extended drip caps and full length drip rail
- Two security lights (one on each side)*
- Porch light
- Hitch light
- Step light
- Weather encapsulated body trim
- Exterior 12 OV receptacle
- Heated enclosed underbelly including tanks and valves
- LP tank cover
- Automotive style fender skirts
- Double welded dual battery brackets
- Exterior speakers
- Easy lube axles
- Exterior quick connect LP hook-up
- Stabilizer Jacks (2)
- LED Hitch lights
- Satellite prep
- Slam latch baggage doors w/magnetic door holders
- Rear ladder
- JT strong arm jack stabilizers
- Black slide out endwalls
- Oyster colored sidewalls

WALLS - CONSTRUCTION

- Welded aluminum walls with R7 insulation
- Solid block foam insulation

ROOF

- 5" Radius, vaulted galvanized steel, tapered trusses on 16" centers
- 3/8" roof decking
- One-piece TPO roof (tan)
- R14 blanket insulation

FLOOR

- 2" welded aluminum laminated floor
- R10 block foam insulation
- Wrapped vapor barrier
- Polypropylene enclosed heated underbelly encloses tanks and valves

CHASSIS

- Leaf spring equalizing suspension system
- Powder coated I-beam
- 10"- electric brakes
- 15" radial tires*
- 15" spare tire, carrier & cover*
- Aluminum rims*

UTILITIES

- 55-amp converter
- 30 lbs. LP bottles with auto changeover
- Omni directional hands-free TV/Radio antenna
- LP leak detector
- Smoke detector
- Carbon monoxide detector*
- Fire extinguisher
- Tinted safety glass windows
- Break-away switch
- Safety chains
- Manual slide backup on all electric slide outs
- 12 Volt battery disconnect
- Carbon monoxide detector
- Outside camp kitchen
- RVIA
- Radial Tires
- 15" spare tire, carrier, and cover
- Aluminum rims
- 50 amp service, wired and braced for second A/C
- Fireplace

OUTBACK DESIGNER PACKAGE*

- Oil rubbed bronze coat hooks (most models)
- Utensil rack
- Innerspring mattress
- Bedspread
- LP cover
- Pleated shades
- Decorative wall lights
- Trash can

OUTBACK COMFORT PACKAGE*

- 13,500 BTU ducted air conditioner
- TV antenna/cable
- AM/FM/CD stereo with bluetooth
- Microwave
- Entry handle
- Free-standing dinette (most models)

POPULAR OPTIONS

- Second Air Conditioner (Bedroom)
- 4 pt. electric leveling system

OUTBACK DIAMOND PACKAGE (OPTIONAL)

- Champagne medallion high gloss exterior fiberglass
- Fantastic fan
- Frameless windows
- Metal wrap awning w/LED lights
- Remote control operation of slides, awning, exterior lights
- Theater seating (N/A 280)
- Solid surface countertops w/pullout faucet
- Outback Rest-n-Read tilt sleep system

* Denotes STD Build Options



DECOR



HEARTHSTONE



TEAK



SUMMIT



www.keystonerv.com/Outback



MAKE IT A DIAMOND

OUTBACK TRAVEL TRAILERS AND FIFTH WHEELS ARE AVAILABLE WITH THE OPTIONAL DIAMOND PACKAGE (N/A ON OUTBACK TERRAIN)



1. Champagne Medallion High Gloss Exterior
2. Fantastic Fan
3. Frameless Windows

4. Metal Wrap Awning with LED Lights
5. Touch Screen Remote (controls slides, awning, exterior lights)
6. Theater Seating (296FRS, 286FRL and 298RE only)

7. Solid Surface Countertops with Pull-Out Faucet
8. Outback Rest-N-Read Tilt Sleep System



www.keystonerv.com/Outback-Terrain

www.keystonerv.com/Outback

Outback

Designed for a Lifetime of RVing



MEMBER
RVIA
RECREATION VEHICLES
INDUSTRY ASSOCIATION

Go RVing
Life's A Trip

YOUR LOCAL OUTBACK DEALER:

Colton RV
3122 Niagara Falls Blvd.
North Tonawanda, NY 14120
(716) 694-0188
(800) 628-4889
www.ColtonRV.com

Colton RV
3443 Southwestern Blvd.
Orchard Park, NY 14127
(716) 957-3250
(800) 628-4889
www.ColtonRV.com

2642 Hackberry Drive
PO Box 2000
Goshen, IN 46527-2000
(574) 535-2100



**Keystone RV
Company**

www.keystonerv.com

Product information is as accurate as possible at the date of publication of this brochure. Features, floor plans, and specifications are subject to change without notice. Please also consult Keystone's web site at keystonerv.com for more current product information and specifications. Tow Vehicle Disclaimer. CAUTION: Owners of Keystone recreational vehicles are solely responsible for the selection and proper use of tow vehicles. All customers should consult with a motor vehicle manufacturer or their dealer concerning the purchase and use of suitable tow vehicles for Keystone products. Keystone disclaims any liability or damages suffered as a result of the selection, operation, use or misuse of a tow vehicle. KEYSTONE'S LIMITED WARRANTY DOES NOT COVER DAMAGE TO THE RECREATIONAL VEHICLE OR THE TOW VEHICLE AS A RESULT OF THE SELECTION, OPERATION, USE OR MISUSE OF THE TOW VEHICLE.

NOVEMBER 2014