



**BIGFOOTRV.COM**



# TRUCK CAMPERS



1500 Series



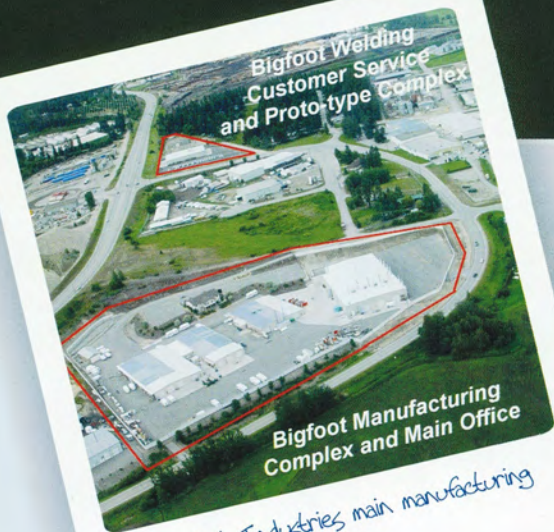
2500 Series



3000 Series



simply the best



Bigfoot Welding  
Customer Service  
and Proto-type Complex

Bigfoot Manufacturing  
Complex and Main Office

Bigfoot Industries main manufacturing  
facility and offices

## Message from the President:

Bigfoot Industries is pleased to be entering its twenty-ninth year of building excellence in recreational vehicles.

Our promise to you, our Valued Customers, is our assurance that we pay attention to your comments and ideas as we design our products with you in mind.

In your Bigfoot RV you will travel with all the classic as well as contemporary comforts of home. Bigfoot is legendary in expressing quality. Peace of mind and relaxation reign supreme as you take part in many spectacular Bigfoot excursions and adventures.

Being a Bigfoot Owner provides a special kind of freedom. We believe that all the memories you make in your Bigfoot will be exceptional ones.

Our Bigfoot Family sincerely appreciates your ongoing loyalty and support.

With your approval, Bigfoot Industries pays for your first year membership in the Bigfoot Owner's Club after the purchase of one of our Bigfoot products. For owners, past, present, and future, all it takes is to log onto [www.bigfootowners.com](http://www.bigfootowners.com) to participate in the activities and forums offered.

Sincerely yours,

Sharon Mayall  
President and CEO



# Bigfoot Quality



A Lean Certified manufacturing process assures a buyer that their unit has been inspected at every step of production, and even the slightest flaws are corrected before the unit moves to the next step of the assembly process.

In 2005 Bigfoot Industries was awarded Lean Certification as a world-class manufacturer of quality Motorhome, Truck Camper and Travel Trailer recreational products.

Our commitment to produce products at the highest standard of quality begins long before a unit enters the assembly line. With the end user in mind, Bigfoot Industries designs, selects materials and approaches production with the mindset of delivering the best quality to our customers.

To produce quality, each production line craftsman contributes to an efficient assembly process that eliminates waste of materials, inconsistencies in finishing and unnecessary requirements on the production line resources.



Owning a Bigfoot Truck Camper offers long-lasting, low maintenance adventuring. Designed, built and finished with you in mind, you will experience a lifetime of travelling enjoyment.

simply the best



# 1500 Series

Take off easily with the lightest and most aerodynamic of the Bigfoot Campers. The Bigfoot 1500 Series Truck Campers are constructed out of two molded gelcoat fiberglass shells which are insulated with one inch high density polystyrene foam. Whether you are climbing up to a secluded cranny high on a mountain, or discovering new country for the first time on wide open roads, your 1500 Series camper gets you there in comfort. The 1500 Series Truck Camper, available in both long and short-box floorplans, comes equipped with an impressive list of standard features, high quality appliances, and three stylish interior decors to choose from.



9.5FS Exterior

1500 Series Aluminum  
Rear Bumper Step



9.5FS Dinette  
Landscape Decor

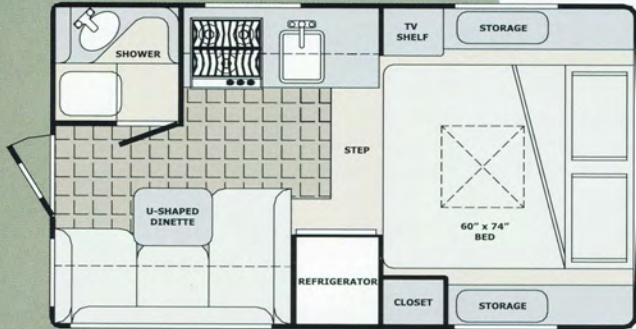


9.5FS Galley  
Cinnamon Oak



# 1500 Series

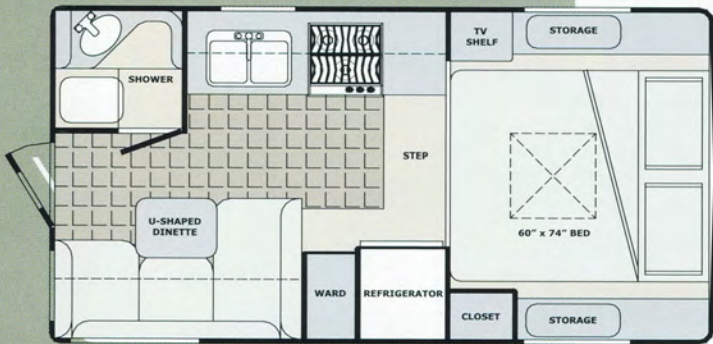
# Floorplans & Specifications



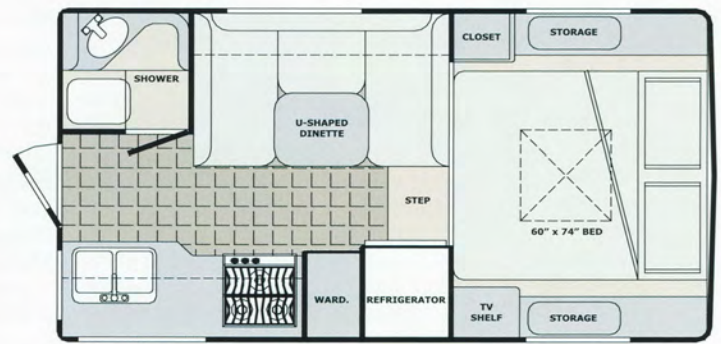
15C8.2 Shortbox



15C9.3 Shortbox



15C9.5FR



15C9.5FS

## 1500 Series Truck Camper Specifications

Units			15C8.2 Shortbox		15C9.3 Shortbox		15C9.5 FS & FR	
Overall Length	ft-in	mtr	15'-1"	4.59	16'-6"	5.03	16'-6"	5.03
Overall Height*	ft-in	mtr	7'-3"	2.21	7'-5"	2.26	7'-5"	2.26
Overall Width	ft-in	mtr	7'-11"	2.41	7'-11"	2.41	7'-11"	2.41
Interior Headroom	ft-in	mtr	6'-5"	1.95	6'-7"	2.03	6'-7"	2.03
Base Dry Weight	lbs	kg	1790	812	2100	953	1970	894
Fresh Water	US Gallon	litres	32	122	32	122	32	122
Grey Water	US Gallon	litres	11	42	11	42	11	42
Black Water	US Gallon	litres	14	53	14	53	14	53
LPG Capacity	lbs	litres	20	9	20	9	20	9
Water Heater	US Gallon	litres	6	23	6	23	6	23
Furnace	BTU		16,000		16,000		16,000	
Refrigerator (2 Way)	cu. ft.	litres	4	113	4	113	4	113

\*Truck Bed to top of Refrigerator Vent



# 1500 Series

# Features

	15C8.2FR	15C9.3	15C9.5FR	15C9.5FS
<b>EXTERIOR:</b>				
Lightweight Two Piece Fiberglass Exterior Shell	Std.	Std.	Std.	Std.
1" High Density EPS Insulation (R6)	Std.	Std.	Std.	Std.
Radius Corner Safety Glass Windows (c/w Screens)	Std.	Std.	Std.	Std.
Folding Assist Handle	Std.	Std.	Std.	Std.
Molded Propane Tank Storage Compartment	Std.	Std.	Std.	Std.
Sewer Hose Storage Compartment	Std.	Std.	Std.	Std.
Aluminum Rear Bumper	N/A	Std.	N/A	N/A
Radius Corner Compartment Doors	Std.	Std.	Std.	Std.
Cab Thru Window	Std.	Std.	Std.	Std.
Radius Corner Entry Door (c/w Deadbolt Lock and Gas Strut)	Std.	Std.	Std.	Std.
Blocking for Rear Awning	Std.	Std.	Std.	Std.
Step Bracket	Std.	Std.	Std.	Std.
Rack & Ladder	Std.	Std.	Std.	Std.
<b>INTERIOR:</b>				
Washable Vinyl Wall Paneling	Std.	Std.	Std.	Std.
Marine Quality Fabric Headliner	Std.	Std.	Std.	Std.
Face Framed Double Screwed Oak Styled Cabinets	Std.	Std.	Std.	Std.
Foam Mattress (60" x 74")	Std.	Std.	Std.	Std.
36" Headroom in Bunk	Std.	Std.	Std.	Std.
Shirt Closet in Bunk Area	Std.	Std.	Std.	Std.
Bedside Storage Boxes	Std.	Std.	Std.	Std.
TV Shelf	Std.	Std.	Std.	Std.
Venetian Blind in Galley	Std.	Std.	Std.	Std.
<b>KITCHEN AND APPLIANCES:</b>				
3 Burner Cooktop	Std.	Std.	Std.	Std.
Electronic Ignition 16,000 BTU Ducted Forced Air Furnace	Std.	Std.	Std.	Std.
Fluorescent Light in Galley	Std.	Std.	Std.	Std.
12-Volt Rangehood	Std.	Std.	Std.	Std.
Monitor Panel	Std.	Std.	Std.	Std.
Stainless Steel Sink	Single	Double	Double	Double
Cutting Board	Std.	Std.	Std.	Std.
Single Lever Faucet	Std.	Std.	Std.	Std.
20 lb. Propane Tank (c/w OPD Valve)	Std.	Std.	Std.	Std.
2-Way 4 cu. ft. Refrigerator	Std.	Std.	Std.	Std.
<b>ELECTRICAL:</b>				
Electrical 120-VAC/30-Amp Service	Std.	Std.	Std.	Std.
45-Amp DC Power Converter (c/w Battery Charger)	Std.	Std.	Std.	Std.
Pre-Wire for Roof Air and Microwave	Std.	Std.	Std.	Std.
Power Fan in Bathroom	Std.	Std.	Std.	Std.
Stereo Pre-Wire (c/w 2 Speakers & Antenna)	Std.	Std.	Std.	Std.
Battery Ready (c/w Battery Box)	Std.	Std.	Std.	Std.
Exterior Light	Std.	Std.	Std.	Std.
<b>PLUMBING:</b>				
City Water Hookup	Std.	Std.	Std.	Std.
12-Volt Demand Water Pump System	Std.	Std.	Std.	Std.
Molded Fiberglass Shower Enclosure	Std.	Std.	Std.	Std.
Water Heater By-Pass System	Std.	Std.	Std.	Std.
RV Anti-Freeze Pickup System	Std.	Std.	Std.	Std.
Footflush RV Toilet	Std.	Std.	Std.	Std.
Hot Water Heater (6 Gallon)	Std.	Std.	Std.	Std.
Enclosed Holding Tanks	Std.	Std.	Std.	Std.
<b>SAFETY:</b>				
MVSS 302 Fire Rated Automotive Fabric	Std.	Std.	Std.	Std.
Smoke Detector	Std.	Std.	Std.	Std.
Propane Detector	Std.	Std.	Std.	Std.
Fire Extinguisher	Std.	Std.	Std.	Std.
Carbon Monoxide Detector	Std.	Std.	Std.	Std.
Escape Hatch	Std.	Std.	Std.	Std.

"Std." = Standard, "Opt." = Optional, "Incl." = Included in Package, "POP" = Preferred Option Package, "N/A" = Not Available



# 1500 Series

# Options

	15C8.2FR	15C9.3	15C9.5FR	15C9.5FS
A & E Box Awning (8')	Opt.	Opt.	Opt.	Opt.
AC Roof - 11,000 BTU	Opt.	Opt.	Opt.	Opt.
Aluminum Rear Bumper Step	Opt.	Opt.	Opt.	Opt.
Auto Changeover (Propane Regulator)	Opt.	Opt.	Opt.	Opt.
Awning Rail	Opt.	Opt.	Opt.	Opt.
Battery Disconnect (Electronic)	Opt.	Opt.	Opt.	Opt.
Black Tank Rinse System	Opt.	Opt.	Opt.	Opt.
Camper 4 Step	Opt.	Opt.	Opt.	Opt.
Camper 5 Step	Opt.	Opt.	Opt.	Opt.
Day/Night Shades (Pleated)	Opt.	Opt.	Opt.	Opt.
Electronic Ignition Hot Water Heater (DSI)	Opt.	Opt.	Opt.	Opt.
Electric Jacks, Motors & Remote	Opt.	Opt.	Opt.	Opt.
Exterior Shower (c/w Winterizing Valves)	Opt.	Opt.	Opt.	Opt.
Fantastic Fan, Bathroom (Exhaust)	Opt.	Opt.	Opt.	Opt.
Fantastic Fan, Galley (Exhaust)	Opt.	Opt.	Opt.	Opt.
LCD TV Prep. Package (c/w Swing Arm)	Opt.	Opt.	Opt.	Opt.
LCD TV (Includes LCD TV Prep. Package)	Opt.	Opt.	Opt.	Opt.
Lift Kit Assembly (Ford/Dodge Trucks)	Opt.	N/A	N/A	N/A
Microwave Oven (.7 cu. ft.)	Opt.	Opt.	Opt.	Opt.
Optical Rear Vision Door	Opt.	Opt.	Opt.	Opt.
Oven (c/w 3 Burner Cooktop)	Opt.	Opt.	Opt.	Opt.
Porcelain Toilet Upgrade	Opt.	Opt.	Opt.	Opt.
Privacy Curtain	Opt.	Opt.	Opt.	Opt.
Rear Door Awning (54")	Opt.	Opt.	Opt.	Opt.
Rear View Camera System	Opt.	Opt.	Opt.	Opt.
Rear Window (Single Pane)	Opt.	Opt.	Opt.	Opt.
Rear Window (Thermal Pane)	Opt.	Opt.	Opt.	Opt.
Skylight (c/w Pleated Shade)	Opt.	Opt.	Opt.	Opt.
Solar Energy System (RV50 - c/w Solar Panel Pre-Wire)	Opt.	Opt.	Opt.	Opt.
Solar Panel Pre-Wire	Opt.	Opt.	Opt.	Opt.
Spring Filled Foam Mattress (60" x 74")	Opt.	Opt.	Opt.	Opt.
Stereo AM/FM - CD/DVD Player	Opt.	Opt.	Opt.	Opt.
Stereo AM/FM - CD Player	Opt.	Opt.	Opt.	Opt.
Twin Beds (30" x 74")	Opt.	Opt.	Opt.	Opt.
Wheel Well Access Door	Opt.	N/A	N/A	N/A
<b>WINTER PACKAGE:</b>				
Solar Reflective Thermal Pane Windows	Incl.	Incl.	Incl.	Incl.
Heated & Insulated Holding Tanks	Incl.	Incl.	Incl.	Incl.
Fantastic Fan (Exhaust)	Incl.	Incl.	Incl.	Incl.
<b>PREFERRED OPTION PACKAGE:</b>				
Bifold Range Cover	Incl.	Incl.	Incl.	Incl.
Dual Propane Tanks (20lb. ea.)	Incl.	Incl.	Incl.	Incl.
Electric Jack, Pre-Wire	Incl.	Incl.	Incl.	Incl.
Refrigerator Upgrade (2-Way 6 cu. ft. )	Incl.	Incl.	Incl.	Incl.
Hidden TV Antenna (c/w TV Booster)	Incl.	Incl.	Incl.	Incl.
Mechanical Jacks (Powder Coated)	Incl.	Incl.	Incl.	Incl.

"Std." = Standard, "Opt." = Optional, "Incl." = Included in Package, "POP" = Preferred Option Package, "N/A" = Not Available



# 2500 Series

You are always ready for any adventure when you own a Bigfoot 2500 Series Truck Camper. These basement model Truck Campers are designed with unique and extensive amounts of interior and exterior storage compartments, which make these particular models perfect to just pick up and go, leaving nothing behind. Bigfoot 2500 Series Truck Campers, available in both long and short-box model floorplans, are constructed out of two molded gelcoat fiberglass shells, which are insulated with one and one half inches of high density polystyrene foam, making these campers extremely durable and weatherproof.

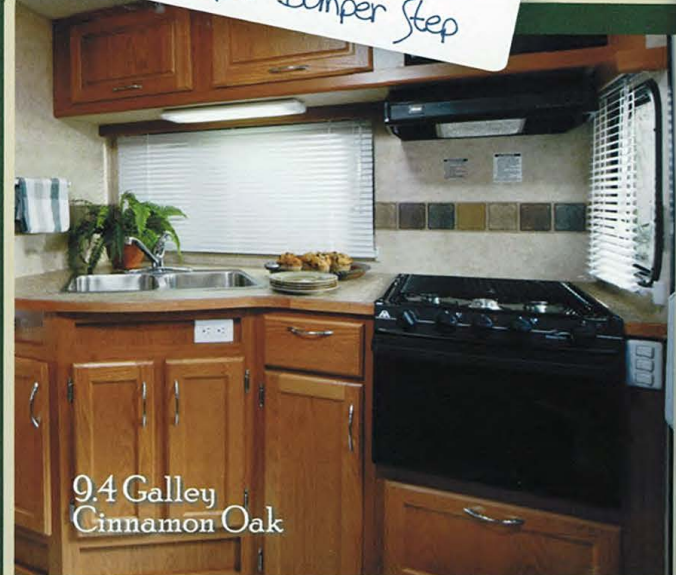


9.4 Shortbox Exterior

2500 Series Aluminum Rear Bumper Step



9.4 Dinette Landscape Decor



9.4 Galley Cinnamon Oak





...designed with purpose and comfort...



10.6E Exterior



10.6E Galley  
Cinnamon Oak

2500 Series



# 2500 Series

2500 Series  
Exterior Storage Compartment



Dually Bracket  
(Loading Position)



2500 Series Interior  
Basement Storage Access



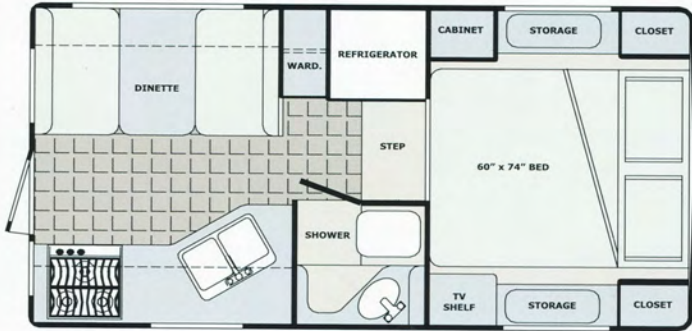
2500 Series  
Rear Awning



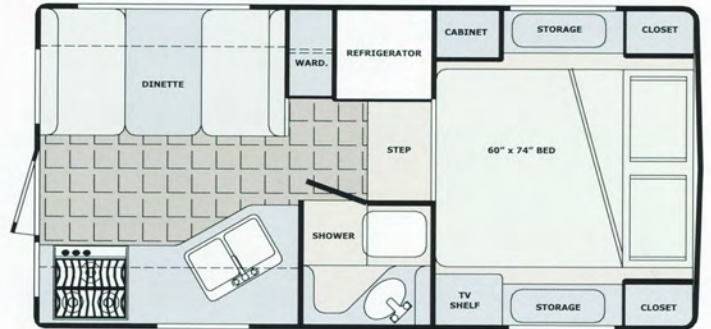
10.6E Optional Generator

# 2500 Series Floorplans

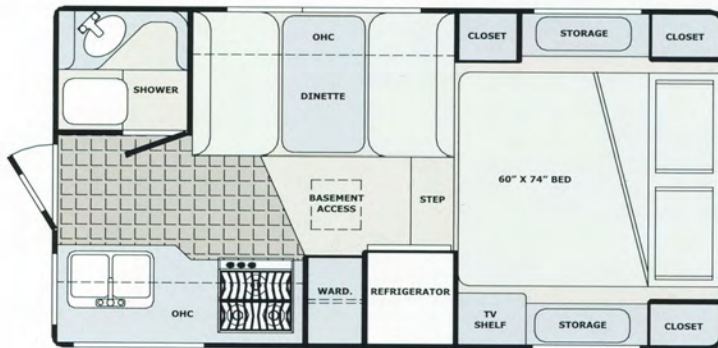
25C9.4 Shortbox



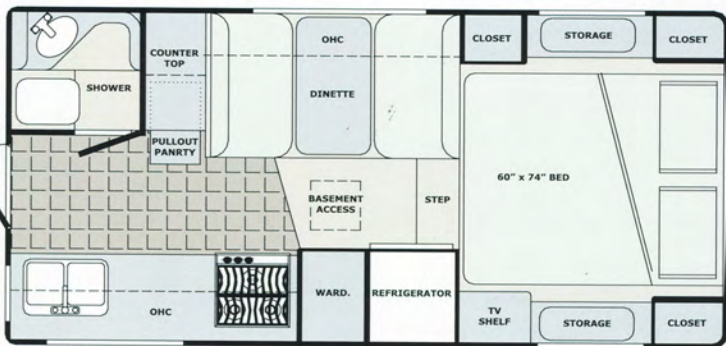
25C9.4 Longbox



OPT. GENERATOR

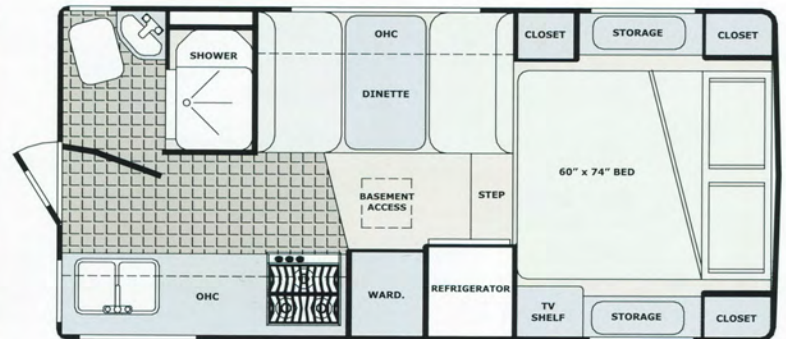


25C9.6E



25C10.5E

OPT. GENERATOR



25C10.6E

OPT. GENERATOR



# 2500 Series

# Features

## EXTERIOR:

	25C9.4SB	25C9.4LB	25C9.6E	25C10.5E	25C10.6E
Lightweight Two Piece Fiberglass Exterior Shell	Std.	Std.	Std.	Std.	Std.
1 1/2" High Density EPS Insulation (R8)	Std.	Std.	Std.	Std.	Std.
Radius Corner Safety Glass Windows (c/w Screens)	Std.	Std.	Std.	Std.	Std.
Folding Assist Handle	Std.	Std.	Std.	Std.	Std.
Molded Propane Tank Storage Compartment	Std.	Std.	Std.	Std.	Std.
Molded Fiberglass Basement Storage Compartment	Std.	Std.	Std.	Std.	Std.
Sewer Hose Storage Compartment	Std.	Std.	Std.	Std.	Std.
Aluminum Rear Bumper	Std.	N/A	N/A	Std.	Std.
Radius Corner Compartment Doors	Std.	Std.	Std.	Std.	Std.
Cab Thru Window	Std.	Std.	Std.	Std.	Std.
Radius Corner Entry Door (c/w Deadbolt Lock and Gas Strut)	Std.	Std.	Std.	Std.	Std.
Blocking for Rear Awning	Std.	Std.	Std.	Std.	Std.
Blocking for Roof Rack & Ladder	Std.	Std.	Std.	Std.	Std.
Mechanical Jacks (Powder Coated)	Std.	Std.	Std.	Std.	Std.
Step Bracket	Std.	Std.	Std.	Std.	Std.

## INTERIOR:

Washable Vinyl Wall Panelling	Std.	Std.	Std.	Std.	Std.
Marine Quality Fabric Headliner	Std.	Std.	Std.	Std.	Std.
Face Framed Double Screwed Oak Styled Cabinets	Std.	Std.	Std.	Std.	Std.
Foam Mattress (60" x 74")	Std.	Std.	Std.	Std.	Std.
42" Headroom in Bunk	Std.	Std.	Std.	Std.	Std.
Shirt Closet in Bunk Area	Std.	Std.	Std.	Std.	Std.
Day/Night Shades	Std.	Std.	Std.	Std.	Std.
Bedside Storage Boxes	Std.	Std.	Std.	Std.	Std.
TV Shelf	Std.	Std.	Std.	Std.	Std.
Venetian Blind in Galley	Std.	Std.	Std.	Std.	Std.

## KITCHEN AND APPLIANCES:

3 Burner Cooktop	Std.	Std.	Std.	Std.	Std.
Electronic Ignition 30,000 BTU Ducted Forced Air Furnace	Std.	Std.	Std.	Std.	Std.
Fluorescent Light in Galley	Std.	Std.	Std.	Std.	Std.
12-Volt Rangehood	Std.	Std.	Std.	Std.	Std.
Monitor Panel	Std.	Std.	Std.	Std.	Std.
Stainless Steel Sink	Double	Double	Double	Double	Double
Cutting Board	Std.	Std.	Std.	Std.	Std.
Single Lever Faucet	Std.	Std.	Std.	Std.	Std.
20 lb. Propane Tank (c/w OPD Valve)	Std.	Std.	Std.	Std.	Std.
2-Way 6 cu. ft. Refrigerator	Std.	Std.	Std.	Std.	Std.

## ELECTRICAL:

Electrical 120-VAC/30-Amp Service	Std.	Std.	Std.	Std.	Std.
45-Amp DC Power Converter (c/w Battery Charger)	Std.	Std.	Std.	Std.	Std.
Pre-Wire for Roof Air and Microwave	Std.	Std.	Std.	Std.	Std.
Power Fan in Bathroom	Std.	Std.	Std.	Std.	Std.
Stereo Pre-Wire (c/w 2 Speakers & Antenna)	Std.	Std.	Std.	Std.	Std.
Battery Compartment	Std.	Std.	Std.	Std.	Std.
Exterior Lights (3)	Std.	Std.	Std.	Std.	Std.

## PLUMBING:

City Water Hookup	Std.	Std.	Std.	Std.	Std.
12-Volt Demand Water Pump System	Std.	Std.	Std.	Std.	Std.
Molded Fiberglass Shower Enclosure	Std.	Std.	Std.	Std.	Std.
Water Heater By-Pass System	Std.	Std.	Std.	Std.	Std.
RV Anti-Freeze Pickup System	Std.	Std.	Std.	Std.	Std.
Footflush RV Toilet	Std.	Std.	Std.	Std.	Std.
Electronic Ignition Hot Water Heater (6 Gallon)	Std.	Std.	Std.	Std.	Std.
Enclosed Heated & Insulated Holding Tanks	Std.	Std.	Std.	Std.	Std.

## SAFETY:

MVSS 302 Fire Rated Automotive Fabric	Std.	Std.	Std.	Std.	Std.
Smoke Detector	Std.	Std.	Std.	Std.	Std.
Propane Detector	Std.	Std.	Std.	Std.	Std.
Fire Extinguisher	Std.	Std.	Std.	Std.	Std.
Carbon Monoxide Detector	Std.	Std.	Std.	Std.	Std.
Egress Window	Std.	Std.	Std.	Std.	Std.

"Std." = Standard, "Opt." = Optional, "Incl." = Included in Package, "POP" = Preferred Option Package, "N/A" = Not Available



# 2500 Series

# Options & Specifications

	25C9.4SB	25C9.4LB	25C9.6E	25C10.5E	25C10.6E
A & E Box Awning	8'	8'	8'	10'	10'
AC Roof - 11,000 BTU	Opt.	Opt.	Opt.	Opt.	Opt.
Aluminum Rear Bumper Step	Opt.	Opt.	Opt.	Opt.	Opt.
Awning Rail	Opt.	Opt.	Opt.	Opt.	Opt.
Battery Disconnect (Electronic)	Opt.	Opt.	Opt.	Opt.	Opt.
Black Tank Rinse System	Opt.	Opt.	Opt.	Opt.	Opt.
Camper 5 Step	Opt.	Opt.	Opt.	Opt.	Opt.
Camper 6 Step	Opt.	Opt.	Opt.	Opt.	Opt.
Electric Jacks, Motors & Remote	Opt.	Opt.	Opt.	Opt.	Opt.
Exterior Shower (c/w Winterizing Valves)	Opt.	Opt.	Opt.	Opt.	Opt.
Fantastic Fan, Bathroom (Exhaust)	Opt.	Opt.	Opt.	Opt.	Opt.
Fantastic Fan, Bunk (Exhaust)	Opt.	Opt.	Opt.	Opt.	Opt.
Fantastic Fan, Galley (Exhaust)	Opt.	Opt.	Opt.	Opt.	Opt.
Generator, Onan (2.5kw. Propane - Requires Gen. Ready Pkg.)	Opt.	N/A	N/A	Opt.	Opt.
Generator Ready Package	Opt.	N/A	N/A	Opt.	Opt.
Jack Brackets (Dually)	Opt.	Opt.	Opt.	Opt.	Opt.
LCD TV Prep. Package (c/w Swing Arm)	Opt.	Opt.	Opt.	Opt.	Opt.
LCD TV (Includes LCD TV Prep. Package)	Opt.	Opt.	Opt.	Opt.	Opt.
Microwave Oven (.7 cu ft.)	Opt.	Opt.	Opt.	Opt.	Opt.
Optical Rear Vision Door	Opt.	Opt.	Opt.	Opt.	Opt.
Porcelain Toilet Upgrade	Opt.	Opt.	Opt.	Opt.	Opt.
Privacy Curtain	Opt.	Opt.	Opt.	Opt.	Opt.
Rear Door Awning (54")	Opt.	Opt.	Opt.	Opt.	Opt.
Rear View Camera System	Opt.	Opt.	Opt.	Opt.	Opt.
Roll Away Shower Door	N/A	N/A	N/A	N/A	Opt.
Skylight (c/w Pleated Shade)	Opt.	Opt.	Opt.	Opt.	Opt.
Skylight in Shower	N/A	N/A	N/A	N/A	Opt.
Solar Energy System (RV50 - c/w Solar Panel Pre-Wire)	Opt.	Opt.	Opt.	Opt.	Opt.
Solar Panel Pre-Wire	Opt.	Opt.	Opt.	Opt.	Opt.
Stereo AM/FM - Cassette/CD Changer	Opt.	Opt.	Opt.	Opt.	Opt.
Stereo AM/FM - CD/DVD Player	Opt.	Opt.	Opt.	Opt.	Opt.
Stereo AM/FM - CD Player	Opt.	Opt.	Opt.	Opt.	Opt.
Solar Reflective Thermal Pane Windows	Opt.	Opt.	Opt.	Opt.	Opt.
Twin Beds (30" x 74")	Opt.	Opt.	Opt.	Opt.	Opt.
<b>PREFERRED OPTION PACKAGE:</b>					
Auto Changeover (Propane Regulator)	Incl.	Incl.	Incl.	Incl.	Incl.
Bifold Range Cover	Incl.	Incl.	Incl.	Incl.	Incl.
Dual Propane Tanks (20lb. ea.)	Incl.	Incl.	Incl.	Incl.	Incl.
Electric Jack, Pre-Wire	Incl.	Incl.	Incl.	Incl.	Incl.
Hidden TV Antenna (c/w TV Booster)	Incl.	Incl.	Incl.	Incl.	Incl.
Oven (c/w 3 Burner Cooktop)	Incl.	Incl.	Incl.	Incl.	Incl.
Rack & Ladder	Incl.	Incl.	Incl.	Incl.	Incl.
Spring Filled Foam Mattress (60" x 74")	Incl.	Incl.	Incl.	Incl.	Incl.

"Std." = Standard, "Opt." = Optional, "Incl." = Included in Package, "POP" = Preferred Option Package, "N/A" = Not Available

## 2500 Series Truck Camper Specifications

Units			25C9.4SB	25C9.4LB	25C9.6E	25C10.5E	25C10.6E
Overall Length	ft-in	mtr	16'-6" 5.03	16'-6" 5.03	16'-6" 5.03	17'-11" 5.46	17'-11" 5.46
Overall Height*	ft-in	mtr	8'-3" 2.51	8'-3" 2.51	8'-3" 2.51	8'-3" 2.51	8'-3" 2.51
Overall Width	ft-in	mtr	7'-11" 2.41	7'-11" 2.41	7'-11" 2.41	7'-11" 2.41	7'-11" 2.41
Interior Headroom	ft-in	mtr	6'-4" 1.93	6'-4" 1.93	6'-4" 1.93	6'-4" 1.93	6'-4" 1.93
Base Dry Weight	lbs	kg	2435 1104	2435 1104	2400 1089	2600 1179	2600 1179
Fresh Water	US Gal.	litres	38 144	38 144	50 190	50 190	50 190
Grey Water	US Gal.	litres	32 121	32 121	24 91	24 91	24 91
Black Water	US Gal.	litres	22 84	22 84	14 53	19 72	19 72
LPG Capacity	lbs	litres	20 9	20 9	20 9	20 9	20 9
Water Heater	US Gal.	litres	6 23	6 23	6 23	6 23	6 23
Furnace	BTU		30,000	30,000	30,000	30,000	30,000
Refrigerator (2 Way)	cu. ft.	litres	6 169	6 169	6 169	6 169	6 169

\*Truck Bed to top of Refrigerator Vent



# 3000 Series

Because you deserve the best, you will want to own a Bigfoot 3000 Series Truck Camper. Being the elite and most luxurious camper of the Bigfoot Truck Camper line-up, the wide-body, basement model 3000 Series, will take you anywhere you want to go. Spacious floorplans, made even more functional with slide-out rooms, offer extraordinary comfort. Hidden beneath its elaborate interior finishing are superior insulation values provided by the durable patented **Fibercore Wallsystem®** construction. The 3000 Series Truck Campers comes with an extensive list of standard features. On the job or getting away from it all, the 3000 Series Bigfoot Truck Camper delivers performance.



C1001 Exterior

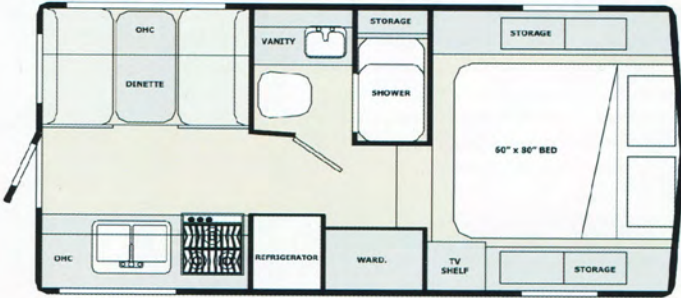


C1001 Round Table Dinette  
Landscape Decor  
Honey Oak



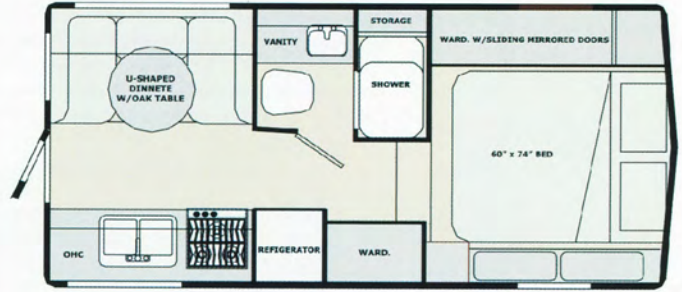
C1001 Galley  
Honey Oak

# Floorplans & Specifications



OPT. GENERATOR

**30C1001**  
shown with std. dinette, and std. bunk



OPT. GENERATOR

**30C1001**  
shown with opt. U-shape dinette, opt. bunk wardrobe



OPT. GENERATOR

**30C1002**  
shown with std. dinette, and std. bunk



OPT. GENERATOR

**30C1002**  
shown with opt. U-shape dinette, opt. bunk wardrobe

## 3000 Series Truck Camper Specifications

	Units		30C1001		30C1002	
	ft-in	mtr	ft-in	mtr	ft-in	mtr
Overall Length	ft-in	mtr	18'-4"	5.59	18'-10"	5.74
Overall Height*	ft-in	mtr	8'-1"	2.46	8'-1"	2.46
Overall Width	ft-in	mtr	8'-4"	2.54	8'-4"	2.54
Interior Headroom	ft-in	mtr	6'-4"	1.93	6'-4"	1.93
Base Dry Weight	lbs	kg	3006	1363	TBA	TBA
Fresh Water	US Gallon	litres	32	122	31	117
Grey Water	US Gallon	litres	32	122	32	121
Black Water	US Gallon	litres	32	122	21	79
LPG Capacity	lbs	litres	20	9	20	9
Water Heater	US Gallon	litres	6	23	6	23
Furnace		BTU		30,000		30,000
Refrigerator (2 Way)	cu. ft.	litres	6	169	6	169

\*Truck Bed to top of Refrigerator Vent

# 3000 Series



# 3000 Series

# Features

## EXTERIOR:

	30C1001	30C1002
Aluminum Framed Fibercore® Bonded Fiberglass Sidewalls c/w 1 1/2" Polyurethane Insulation (R12)	Std.	Std.
Fibercore® Bonded Ceiling c/w 2" Polyurethane Insulation (R14)	Std.	Std.
Slide Out Room with Fibercore® Bonded Fiberglass Sidewall c/w 1 1/2" Polyurethane Insulation (R12)	N/A	Std.
Fiberglass Roof	Std.	Std.
Radius Corner Safety Glass Windows (c/w Screens)	Std.	Std.
Folding Assist Handle	Std.	Std.
Molded Fiberglass Front Cap	Std.	Std.
Molded Fiberglass Rear Cap (c/w Bumper and Built-in Step)	Std.	Std.
Molded Propane Tank Storage Compartment	Std.	Std.
Molded Fiberglass Basement Storage Compartment (c/w Plastic Storage Tray)	Std.	Std.
Sewer Hose Storage Compartment	Std.	Std.
Radius Corner Compartment Doors	Std.	Std.
Cab Thru Window	Std.	Std.
Radius Corner Entry Door (c/w Deadbolt Lock and Gas Strut)	Std.	Std.
Blocking for Rear Awning	Std.	Std.
Blocking for Roof Rack & Ladder	Std.	Std.
Mechanical Jacks (Powder Coated)	Std.	Std.
Step Bracket	Std.	Std.

## INTERIOR:

Washable Vinyl Wall Paneling	Std.	Std.
Marine Quality Fabric Headliner	Std.	Std.
Face Framed Double Screwed Oak Styled Cabinets	Std.	Std.
Foam Mattress (60" x 80")	Std.	Std.
42" Headroom in Bunk Area	Std.	Std.
Day/Night Shades	Std.	Std.
Bedside Storage Boxes	Std.	Std.
TV Shelf	Std.	Std.
Venetian Blind in Galley	Std.	Std.

## KITCHEN AND APPLIANCES:

3 Burner Cooktop	Std.	Std.
Electronic Ignition 30,000 BTU Ducted Forced Air Furnace	Std.	Std.
Fluorescent Light in Galley	Std.	Std.
12 Volt Rangehood	Std.	Std.
Monitor Panel	Std.	Std.
Stainless Steel Sink	Double	Double
Cutting Board	Std.	Std.
Single Lever Faucet	Std.	Std.
20LB Propane Tank (c/w OPD Valve)	Std.	Std.
2-Way 6 cu. ft. Refrigerator	Std.	Std.

## ELECTRICAL:

Electrical 120VAC/30Amp Service	Std.	Std.
45-Amp DC Power Converter (c/w Battery Charger)	Std.	Std.
Pre-Wire for Roof Air and Microwave	Std.	Std.
Power Fan in Bathroom	Std.	Std.
Stereo Pre-Wire (c/w 4 Speakers & Antenna)	Std.	Std.
Molded Exterior Battery Compartment (c/w Pull Out Tray)	Std.	Std.
Exterior Lights (3)	Std.	Std.
Electric Jack, Pre-Wire	Std.	Std.

## PLUMBING:

City Water Hookup	Std.	Std.
12-Volt Demand Water Pump System	Std.	Std.
Molded Fiberglass Shower Enclosure	Std.	Std.
Water Heater By-Pass System	Std.	Std.
RV Anti-Freeze Pickup System	Std.	Std.
Porcelain Toilet	Std.	Std.
Electronic Ignition Hot Water Heater (6 Gallon)	Std.	Std.
Enclosed Heated & Insulated Holding Tanks	Std.	Std.

## SAFETY:

MVSS 302 Fire Rated Automotive Fabric	Std.	Std.
Smoke Detector	Std.	Std.
Propane Detector	Std.	Std.
Fire Extinguisher	Std.	Std.
Carbon Monoxide Detector	Std.	Std.
Egress Window	Std.	Std.

"Std." = Standard, "Opt." = Optional, "Incl." = Included in Package, "POP" = Preferred Option Package, "N/A" = Not Available





# 3000 Series

# Options

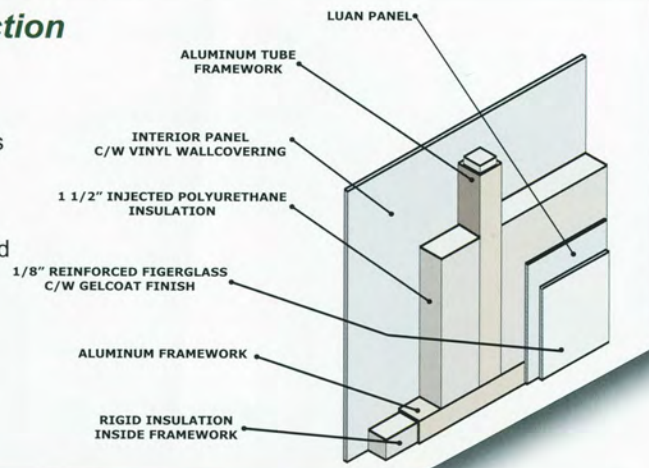
	30C1001	30C1002
Side Awning	Opt.	Opt.
AC Roof - 11,00 BTU	Opt.	Opt.
Battery Disconnect (Electronic)	Opt.	Opt.
Black Tank Rinse System	Opt.	Opt.
Camper 5 Step	Opt.	Opt.
Camper 6 Step	Opt.	Opt.
Electric Jacks, Motors & Remote	Opt.	Opt.
Exterior Shower (c/w Winterizing Valves)	Opt.	Opt.
Fantastic Fan, Bathroom (Exhaust)	Opt.	Opt.
Fantastic Fan, Bunk (Exhaust)	Opt.	Opt.
Fantastic Fan, Galley (Exhaust)	Opt.	Opt.
Generator, Onan Camp Power (2.5kw. Propane - Requires Gen. Ready Pkg.)	Opt.	Opt.
Generator Ready Package	Opt.	Opt.
Jack Brackets (Dually)	Opt.	Opt.
LCD TV Prep. Package (c/w Swing Arm)	Opt.	Opt.
LCD TV (Includes LCD TV Prep. Package)	Opt.	Opt.
Microwave Oven (1.0 cu ft.)	Opt.	Opt.
Optical Rear Vision Door	Opt.	Opt.
Privacy Curtain	Opt.	Opt.
Rear Door Awning (90")	Opt.	Opt.
Rear View Camera System (Color)	Opt.	Opt.
Roll Away Shower Door	Opt.	Opt.
Skylight (c/w Pleated Shade)	Opt.	Opt.
Slide Topper Awning	N/A	Opt.
U-Shaped Dinette (c/w Round Oak Table)	Opt.	Opt.
Bedside Wardrobe with Sliding Mirrored Doors (In lieu of Bedside Cabinet)	Opt.	Opt.
Solar Energy System (RV50)	Opt.	Opt.
Solar Panel Pre-Wire	Opt.	Opt.
Stereo AM/FM - Cassette/CD Changer	Opt.	Opt.
Stereo AM/FM - CD/DVD Player	Opt.	Opt.
Stereo AM/FM - CD Player	Opt.	Opt.
Solar Reflective Thermal Pane Windows	Opt.	Opt.
Twin Beds (N/A with Bedside Wardrobe Option)	30" x 74"	30" x 74"
<b>PREFERRED OPTION PACKAGE:</b>		
Auto Changeover (Propane Regulator)	Incl.	Incl.
Bifold Range Cover	Incl.	Incl.
Dual Propane Tanks (20lb. ea.)	Incl.	Incl.
Oven (c/w 3 Burner Cooktop)	Incl.	Incl.
Hidden TV Antenna (c/w TV Booster)	Incl.	Incl.
Rack & Ladder	Incl.	Incl.
Spring Filled Mattress (60" x 80")	Incl.	Incl.
Skylight in Shower	Incl.	Incl.

"Std." = Standard, "Opt." = Optional, "Incl." = Included in Package, "POP" = Preferred Option Package, "N/A" = Not Available

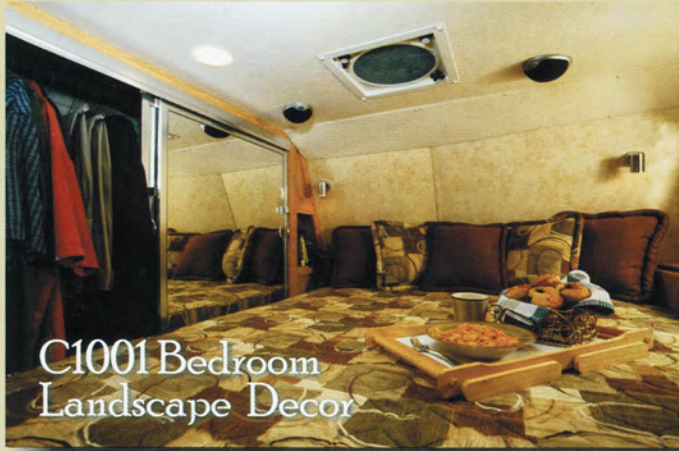
## Patented Sidewall Construction Technology

*Fibercore Wall System*™ is a design feature that is unique to Bigfoot 3000 Series models of Truck Campers, and cannot be found anywhere else in the RV industry.

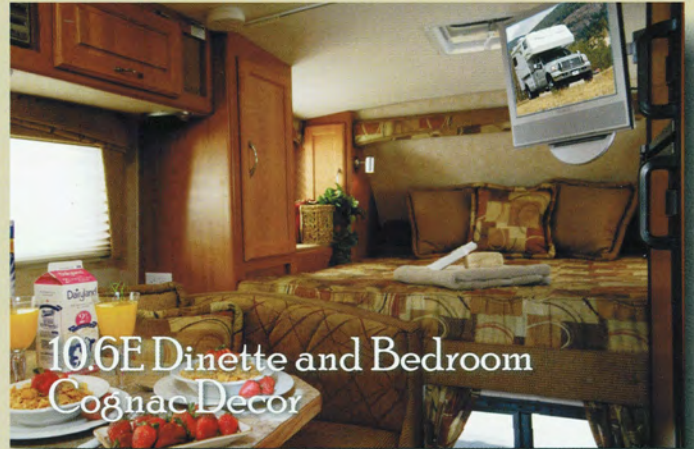
The wall, roof and floor of the RV are framed with an insulated tubular aluminium structure, and are then injected with a polyurethane insulation material that provides superior insulation values when compared to conventionally bonded sidewalls.



# Interior Decors



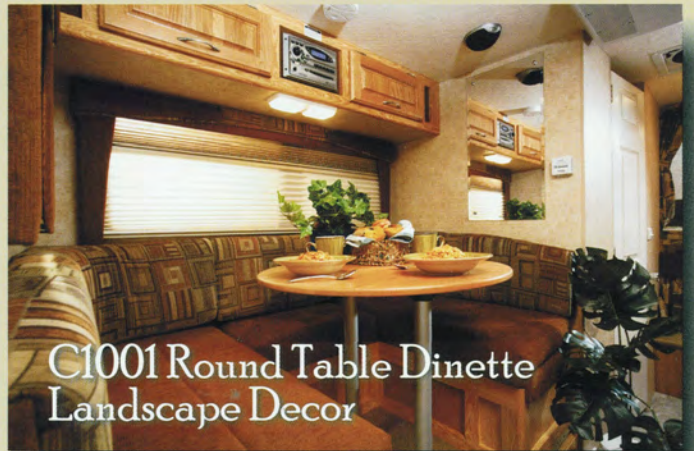
C1001 Bedroom  
Landscape Decor



10.6E Dinette and Bedroom  
Cognac Decor



Exterior Shower



C1001 Round Table Dinette  
Landscape Decor



C1001 Bathroom



9.5FS Dinette  
Nordic Decor

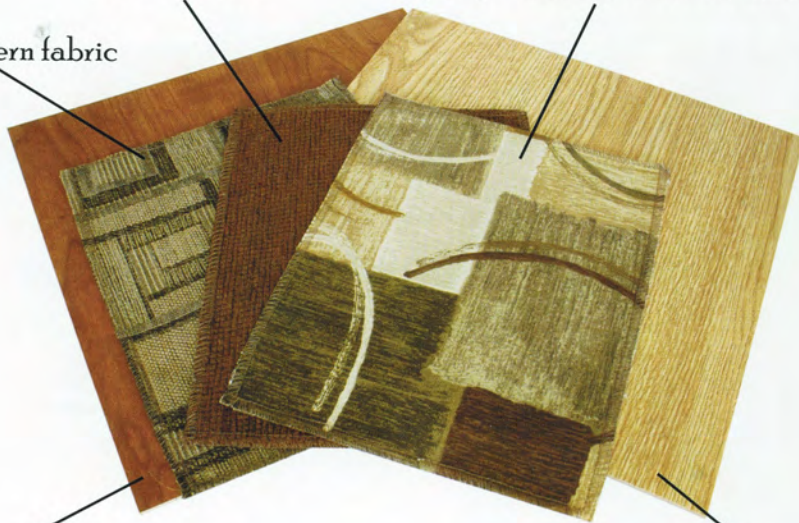
# Choose Your Decor



accent fabric

drapery/valance/mattress fabric

pattern fabric



cinnamon oak

honey oak



Cognac

Landscape

Nordic



Bigfoot Industries  
4114 Crozier Road, Armstrong,  
British Columbia, Canada V0E 1B6  
Phone: 250-546-2177

Please visit our website at  
[www.bigfootrv.com](http://www.bigfootrv.com)  
or  
[www.BigfootOwners.com](http://www.BigfootOwners.com)

# BIGFOOTRV.COM

## BIGFOOT WARRANTY

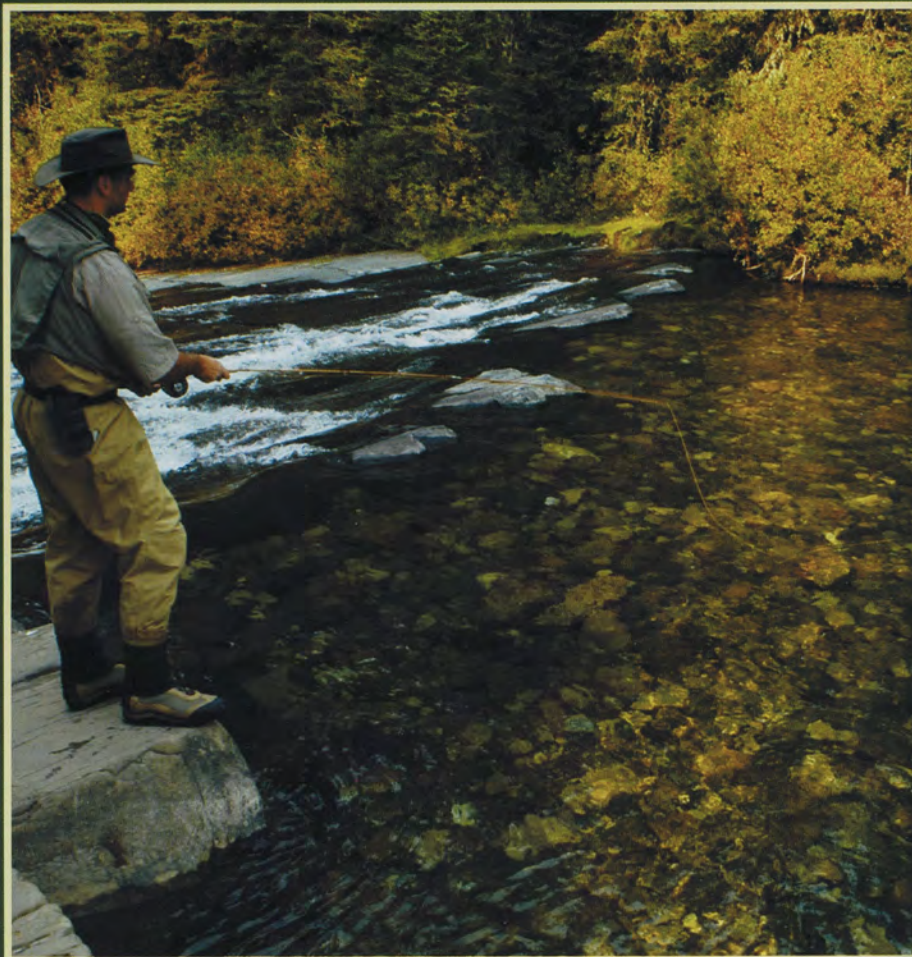
Bigfoot Industries provides a one-year limited warranty on all Bigfoot Products. In addition, Bigfoot Industries offers a three-year limited structural integrity warranty on all 1500 and 2500 Series models and a five-year limited structural integrity warranty on all 3000 and 4000 Series models.

Appliance warranties vary and are set by the respective manufacturer.

Please contact your dealer for complete details regarding warranty policies.

The information contained herein is as accurate as possible at the time of publication. Subsequent refinements and improvements may be evident in the actual products. All liquid capacities are approximate and dimensions are nominal. Some equipment and features illustrated may be optional, or for presentation purposes only.

This brochure may not be used for contractual purposes. Bigfoot Industries reserves the right to improve or modify its products without prior written notice.



notes:



Go RVing

Colton RV  
North Tonawanda, NY 14120  
(716) 694-0188  
(800) 628-4889  
[www.ColtonRV.com](http://www.ColtonRV.com)

Colton RV  
Orchard Park, NY 14127  
(716) 957-3250  
(800) 628-4889  
[www.Coltonrv.com](http://www.Coltonrv.com)

your local Bigfoot specialist