

# VIBE

CAMP ANYWHERE  
PKG







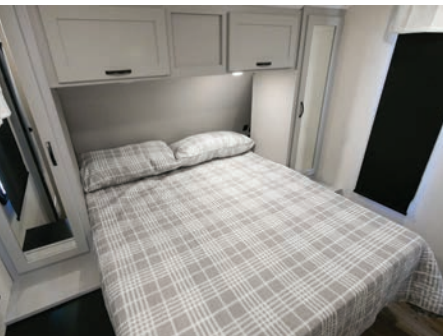
**BUNKHOUSE MODEL  
34BH**



**GRANITE DECOR**



**COUPLES COACH  
25RK**



**MOONSHINE DECOR**

## STANDARDS AND OPTIONS



EXTERIOR STANDARDS	INTERIOR STANDARDS	INFINITY PACKAGE	OPTIONS
<ul style="list-style-type: none"> <li>- Hyper Lyte Construction – Amazingly Light!!</li> <li>- Gel Coat Fiberglass w/ Upgraded Graphics Package</li> <li>- Laminated "Aluma Frame" Sidewalls/ Rearwall/Slideboxes</li> <li>- 2" Laminated Floor</li> <li>- 15,000 BTU Ducted A/C IPO 13.5K</li> <li>- High efficiency A/C Cooling System (Larger Duct Work)</li> <li>- Cable &amp; Satellite Prep</li> <li>- Digital TV Antenna w/ Booster</li> <li>- Extra Large, Aluminum Framed, Pass-thru Storage</li> <li>- One Touch Electric Awning</li> <li>- LED Lighted Exterior Speakers (2)</li> <li>- XL Grab Handle</li> <li>- Radial Tires Filled w/ Nitrogen</li> <li>- Heated and Enclosed Underbelly</li> <li>- Power Stabilizer Jacks</li> <li>- 2-20 lb. LP Bottles</li> <li>- 30" Friction Hinge Entry Door</li> <li>- Outside Kitchen on Select Models</li> <li>- Aluminum Wheels</li> <li>- Spare Tire</li> <li>- Outside shower</li> </ul>	<ul style="list-style-type: none"> <li>- Frosted Glass in Kitchen Cabinets</li> <li>- 3-Burner Cooktop w/ Stainless Steel 17" Oven</li> <li>- Large Single Bowl Stainless Steel Kitchen Sink</li> <li>- Upgraded 10.7 cu. ft. Residential Refer</li> <li>- 6 gal. G/E DSI Water Heater</li> <li>- Dometic Pedal Flush Toilet</li> <li>- Solid Surface Kitchen Countertops</li> <li>- Deluxe Wood Booth Table Top</li> <li>- 80" Interior Height</li> <li>- Hard Doors To Bedrooms For Privacy (Not Curtains)</li> <li>- Decorative Kitchen Back Splash</li> <li>- Large Trash Can w/ Designated Out-of-the-way Area</li> <li>- Upgraded Residential Style Carpet</li> <li>- Full Extension Ball Bearing Drawer Guides</li> <li>- Pot &amp; Pan Storage Under Dinette Seats</li> <li>- Tri-fold Sofa</li> <li>- Skylight Over Kitchen</li> <li>- Skylight Over Tub/Shower</li> </ul>	<ul style="list-style-type: none"> <li>- Modern Black Chef's Appliance Package</li> <li>- Bluetooth MP3/ DVD/CD/FM w/ Surround Sound</li> <li>- Stainless Steel Roll-up Sink Cover</li> <li>- Blackout Roller Shades</li> <li>- Black Tank Flush</li> <li>- 190w Roof Mounted Solar Panel w/ Battery &amp; Box</li> <li>- Upgraded Spring Faucet</li> <li>- Diamond Guard Front Radius</li> <li>- Mor/ryde Fold-Down Solid Step</li> <li>- 50" Flat Screen TV's in Most Models</li> <li>- LED Awning Light</li> <li>- Recessed Stove W/ Glass Cover</li> <li>- New 3/4 Front Fiberglass Cap W/ LED Light</li> <li>- Teddy Bear Series Bunk Mats (Bunkhouse Models)</li> <li>- Decorative Window Treatments (Living Room Only)</li> <li>- Solid Surface Countertops</li> <li>- Heated Tank Pads</li> </ul>	<ul style="list-style-type: none"> <li>- 2 Interior Decor Choices: Moonshine, Granite</li> <li>- Free Standing Table w/ 4 Chairs IPO Booth Dinette</li> <li>- 50 Amp Service w/ Wire &amp; Brace for 2nd A/C</li> <li>- 2nd 13.5K A/C in Bedroom (Requires 50 Amp)</li> </ul>

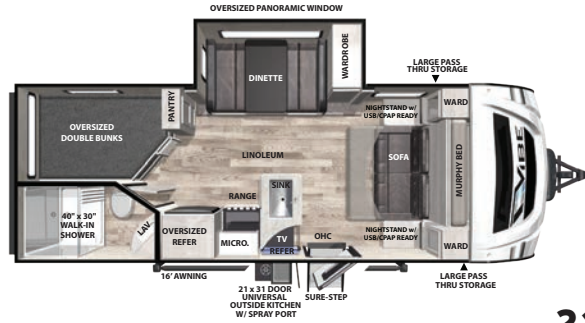
**V**  
**BUNKHOUSE MODEL**  
**26BH**



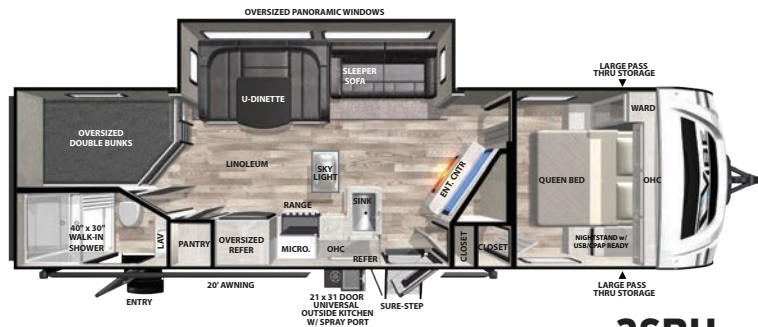




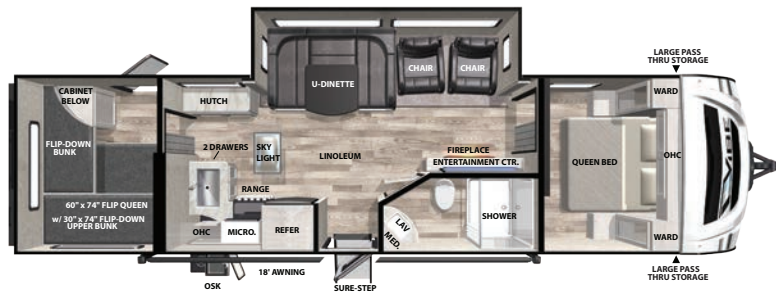
## BUNKHOUSE MODELS



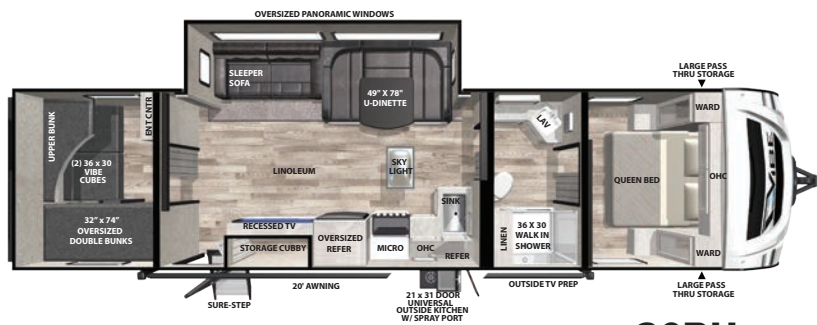
**21BH**



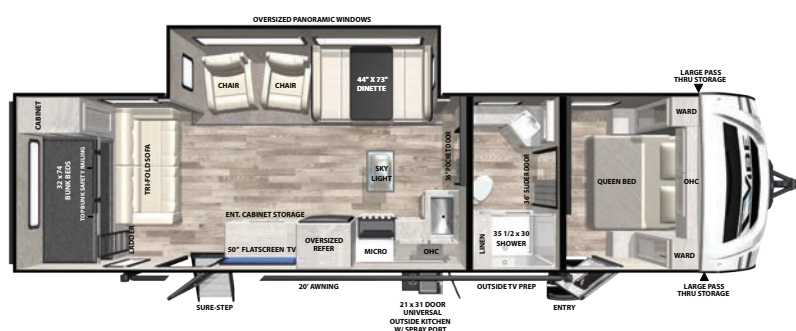
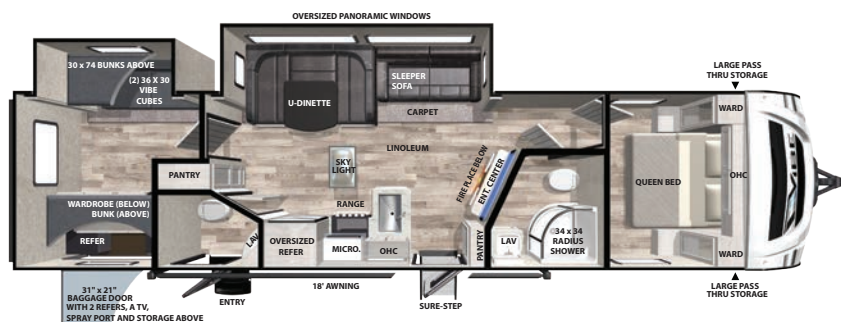
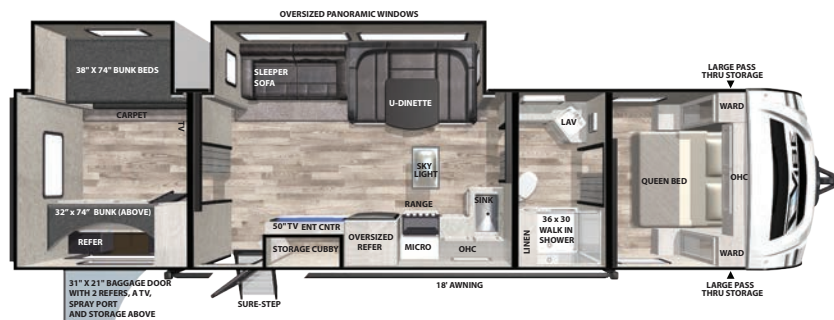
**26BH**



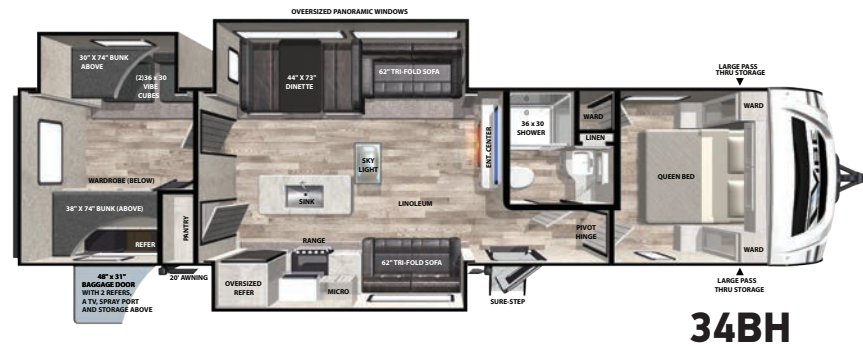
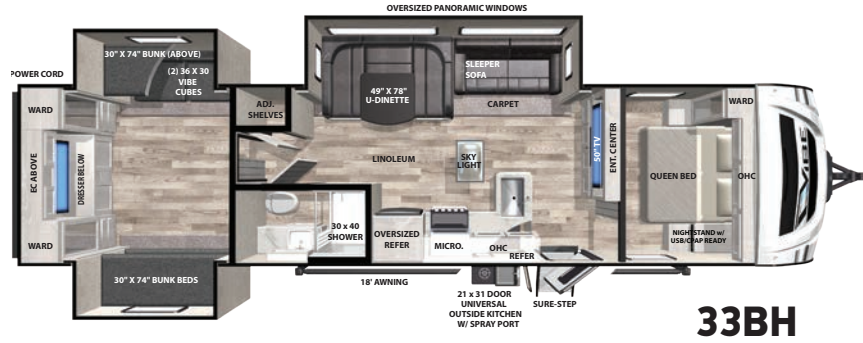
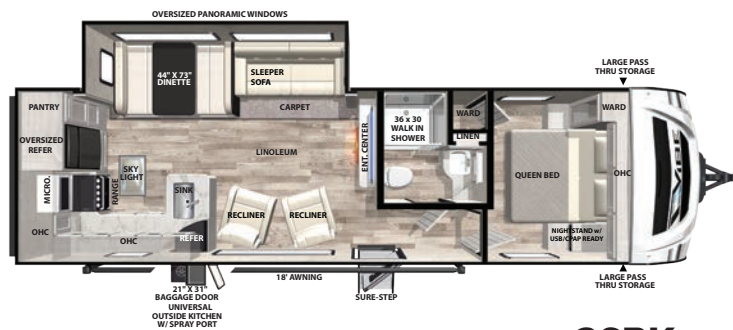
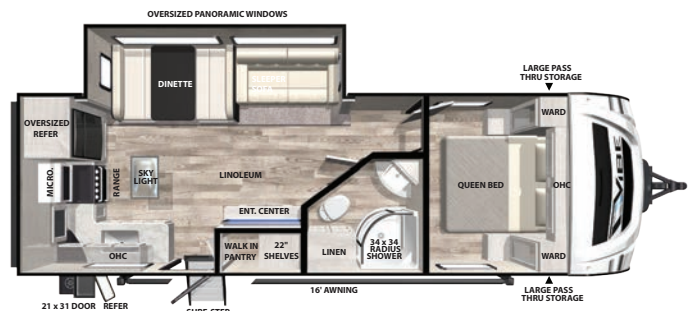
**27VB**



**28BH**



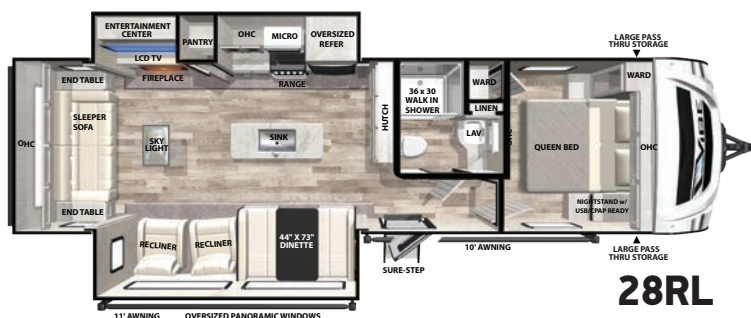
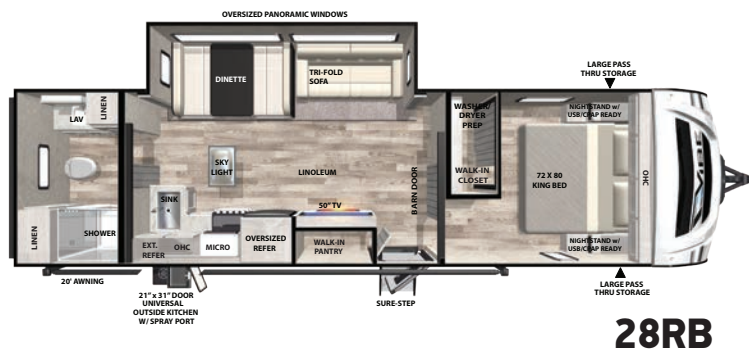
SPECIFICATIONS	21BH	26BH	27VB	28BH	29BH	32BH	32MS
Hitch Weight (lbs.)	636	835	890	930	1072	1074	1056
UVW	5,245	6,348	7,118	6,875	7,391	7,836	6,884
CCC (cargo cap.)	2,355	1,487	2,572	2,855	2,481	2,038	2,972
Exterior Length	25' 7"	33' 10"	35' 4"	36' 6"	38'	38' 3"	35' 8"
Exterior Height	11' 3"	11' 2"	11' 2"	11' 2"	11' 2"	11' 2"	11' 2"
Fresh Water (gal.)	40	40	40	40	40	40	40
Black Water (gal.)	30	30	30	30	30	60	30
Grey Water (gal.)	60	90	60	60	60	60	60
Awning Size	16'	20'	18'	20'	18'	18'	20'
Tire Size	14"	14"	15"	15"	15"	15"	15"

[illegible]





## COUPLES COACHES (CONT.).



SPECIFICATIONS	33BH	34BH	18RB	25RK	26RK	28RB	28RL	31ML
Hitch Weight (lbs.)	936	972	503	805	941	959	821	990
UVW	7,740	8,164	4,730	5,888	6,664	6,691	7,096	7,558
CCC (cargo cap.)	1,996	1,608	1,525	1,712	1,277	3,068	2,525	2,232
Exterior Length	38'	39' 5"	21' 11"	29' 2"	33' 6"	34' 2"	34' 5"	36' 2"
Exterior Height	11' 2"	11' 2"	11' 2"	11' 2"	11' 2"	11' 2"	11' 2"	11' 2"
Fresh Water (gal.)	40	40	40	40	40	40	40	40
Black Water (gal.)	30	30	30	30	30	30	30	30
Grey Water (gal.)	60	60	30	60	60	90	60	90
Awning Size	18'	20'	16'	16'	18'	20'	11'/10'	14'
Tire Size	15"	15"	14"	14"	14"	15"	15"	15"



#### PRE-DELIVERY INSPECTION FACILITY

20,000 square feet of quality assurance. The bare essentials for a premium product. This state-of-the-art facility gives immediate daily feedback to production for quality assurance in every unit built.



[www.ForestRiverBuyLocal.com](http://www.ForestRiverBuyLocal.com)



[www.forestriverfrog.com](http://www.forestriverfrog.com)

GVWR (Gross Vehicle Weight Rating) - is the maximum permissible weight of the unit when fully loaded. It includes all weights, inclusive of all fluids, cargo, optional equipment and accessories. For safety and product performance do NOT exceed the GVWR.

GAWR (Gross Axle Weight Rating) - is the maximum permissible weight, including cargo, fluids, optional equipment and accessories that can be safely supported by a combination of all axles.

UVW (Unloaded Vehicle Weight)\* - is the typical weight of the unit as manufactured at the factory. It includes all weight at the unit's axle(s) and tongue or pin and LP Gas. The UVW does not include cargo, fresh potable water, additional optional equipment or dealer installed accessories.

\*Estimated Average based on standard build optional equipment.

CCC (Cargo Carrying Capacity)\*\* - is the amount of weight available for fresh potable water, cargo, additional optional equipment and accessories. CCC is equal to GVWR minus UVW. Available CCC should accommodate fresh potable water (8.3 lbs per gallon). Before filling the fresh water tank, empty the black and gray tanks to provide for more cargo capacity.

\*\* Estimated average based on standard build optional equipment

Each Forest River RV is weighed at the manufacturing facility prior to shipping. A label identifying the unloaded vehicle weight of the actual unit and the cargo carrying capacity is applied to every Forest River RV prior to leaving our facilities.

The load capacity of your unit is designated by weight, not by volume, so you cannot necessarily use all available space when loading your unit.

All information contained in this brochure is believed to be accurate at the time of publication. However, during the model year, it may be necessary to make revisions and Forest River, Inc., reserves the right to make all such changes without notice, including prices, colors, materials, equipment and specifications as well as the addition of new models and the discontinuance of models shown in this brochure. Therefore, please consult with your Forest River dealer and confirm the existence of any materials, design or specifications that are material to your purchase decision.

# VIBE



Colton RV & Marine  
3122 Niagara Falls Blvd  
North Tonawanda, NY 14120  
(716) 694-0188  
[www.ColtonRV.com](http://www.ColtonRV.com)

Colton RV & Marine  
3443 South  
Orchard Park, NY 14127  
(716) 957-3250  
[www.Coltonrv.com](http://www.Coltonrv.com)



#### Learn More

Scan this barcode using a QR Reader on your smart phone to learn more about Forest River.



A Berkshire Hathaway company.

#### VIBE

401 CR 15, Elkhart, IN 46516  
(574) 296-2084  
[www.forestriverinc.com](http://www.forestriverinc.com)  
[www.forestriveraccessories.com](http://www.forestriveraccessories.com)

YOUR LOCAL VIBE DEALER