

Minnie Winnie and Minnie Winnie Premier



Minnie Winnie

Why Minnie Winnie | Minnie Winnie Premier?

- Five family-friendly floorplans
- Bunk beds (31H | 31HP)
- Available HDTVs
- Vinyl ceiling
- MCD solar/blackout shades (Premier Package)
- Large rear storage compartment
- Premier Package Upgrade

Minnie Winnie | Minnie Winnie Premier



Click on this icon throughout the brochure to link to more information on the web.



On the Cover: Minnie Winnie 31K Polar Standard Graphics
Minnie Winnie Premier 31KP Camel Deluxe Graphics

31KP Coastal with Coffee-Glazed Vienna Maple Cabinetry

A Classic Redefined

The popular Minnie Winnie® returns to the Winnebago® lineup, offering exciting features and more value than ever. Traveling families will appreciate having sleeping flexibility, including a private bedroom and cab overhead bed. A roomy living area with an available HDTV and DVD player provides a great place to relax after a day of family fun. Your storage needs are covered with a large exterior

storage compartment so you can bring along all your gear. If you are looking for more amenities and eye-catching exterior deluxe graphics, choose the Minnie Winnie Premier. Enjoy legendary Winnebago Industries® quality and performance at an extremely friendly price in the all-new Minnie Winnie and Minnie Winnie Premier.



Recognized Quality The RV Dealers Association bestows its annual Quality Circle Award based on dealer ratings to the manufacturers that provide exceptional products, service and support. Only one manufacturer has received this honor for seventeen consecutive years: Winnebago Industries®



Best in Class

See how Winnebago Industries takes motorhome design and function to the next level, and why we've earned the right to be called the Most Recognized Name in Motorhomes.®



Click on this icon throughout the brochure to link to more information on the web.



Lower Entrance Step is designed for easy access (Ford® Chassis) (Chevrolet® Chassis features a single pull-out step).



Above Door Storage Stow a few more items with this extra storage shelf.



HDTV with a DVD player comes with the Convenience and Appearance Package, as well as the Premier Package Upgrade.



Radio/Rearview Monitor System Listen to AM/FM radio or connect your iPod®/MP3 player to the 6" color, touch screen.



U-Shaped Dinette The 22R and 31K/31KP feature a roomy dinette that easily converts into a comfortable bed for overnight guests.





31KP Coastal with Coffee-Glazed Vienna Maple Cabinetry

With five Minnie Winnie floorplans to choose from, you're sure to find the ideal furniture arrangement to comfortably suit your dining and lounging needs. Watching your HDTV is made even more enjoyable while relaxing on the leatherette dinette or sofa/bed. Choose the Minnie Winnie Premier Package Upgrade with its Corian® galley countertop and MCD solar/blackout roller shades that allow you to set the ideal atmosphere in your coach, day or night.



31KP Sofa/Bed



Sofa as Bed



MCD Solar/Blackout Roller Shades



31KP Galley



31K Refrigerator

Wherever your travels take you, enjoy delicious meals made in the user-friendly galley featuring a microwave oven, three-burner range top and vented range hood. The Minnie Winnie features a double-door refrigerator and Wilsonart® high-definition laminate countertops. The Minnie Winnie Premier Package offers an upgrade to Corian® countertops, a sink cover, a large double-door refrigerator with raised panel door inserts, and an optional three-burner range with oven.



Full-Extension Drawer Slides



A private master bedroom with a walk-around queen bed on most models provides a welcome retreat during an extended vacation. The 31H/31HP is an excellent choice for the traveling family with bunk beds, a wardrobe, and a large chest of drawers.





Dash

Settle into an easy-to-drive RV with fully adjustable cab seats. Your dash radio options include an available Radio/Rearview Monitor System with 6" touch screen monitor, AM/FM stereo, iPod®/MP3 input and rear color camera. The Minnie Winnie Premier Package offers a brushed aluminum dash appliqué for a sportier look, along with optional power mirrors with defrost and a sideview camera system.



Radio/Rearview Monitor

Minnie Winnie | Minnie Winnie Premier

Exterior



One of the best features of the Minnie Winnie is its surprisingly generous cargo capacity, made possible by the large rear storage compartment. Available upgrades include a premium high-gloss fiberglass exterior, stainless steel wheel liners, and an electric patio awning. The Minnie Winnie Premier Package offers a deluxe graphic design with taupe sidewalls and upper and lower paint.



25B Rear Storage Compartment



Wheel Liner



Exterior Rear Storage



31KP Powered Patio Awning



Trailer Hitch

Fiberglass Roof The one-piece fiberglass roof is backed by a 10-year limited parts-and-labor roof skin warranty.

Rubber Can't Cut It Rubber roofs used by competitors can streak and degrade over time.

Thermo-Panel® Sidewalls By layering fiberglass and high-density block foam insulation with welded aluminum support structures, we create some of the industry's strongest, most durable and lightweight sidewalls.

E-Coating An electrodeposition coating helps protect critical steel components.

Embedded Steel Metal substructures embedded into the sidewall provide solid attachment points to keep cabinets and appliances mounted securely in place.

Solid Framework Aluminum extruded in our own facility to our exacting standards creates an extremely strong and solid structural framework.

Laser-Cut Tubing Precision laser cutters create precise joints in structural steel that are stronger and require less welding.



Interlocking Joints Specially engineered interlocking joints connect the floor, sidewalls and roof where competitors often rely on simple screws to bear the weight.



SUPER STRUCTURE

BUILT TO LAST

Every coach—from our smallest Class C to our largest diesel-pusher model—is built to Winnebago Industries'® legendary SuperStructure® construction standards. It's a process developed and refined over more than 50 years of building some of the strongest, most durable coaches in the industry.



TESTING Before rolling out of our factories, every coach undergoes an extensive 113-point inspection. Each coach also passes a high-pressure water test that simulates rain at a rate of 50-inches per hour to check for leaks. During the design process, our computer simulations, physical testing center, and rigorous test track ensure each model is built to last.



DETAILS At Winnebago Industries, we treat the features you can't see with the same care as the ones you can. Look in the access panels of some of our competitors' coaches and you'll see loose insulation and wires haphazardly strewn about. Winnebago Industries maintains a clean fit and finish throughout so your coach will last for the long haul.



BUILT IN-HOUSE We extrude our own aluminum. We rotocast our own plastic components. In fact, we manufacture most of our own parts so they are designed to fit the space, rather than fitting the space to an awkward off-the-shelf component size.



**SUPER
STRUCTURE**
BUILT TO LAST

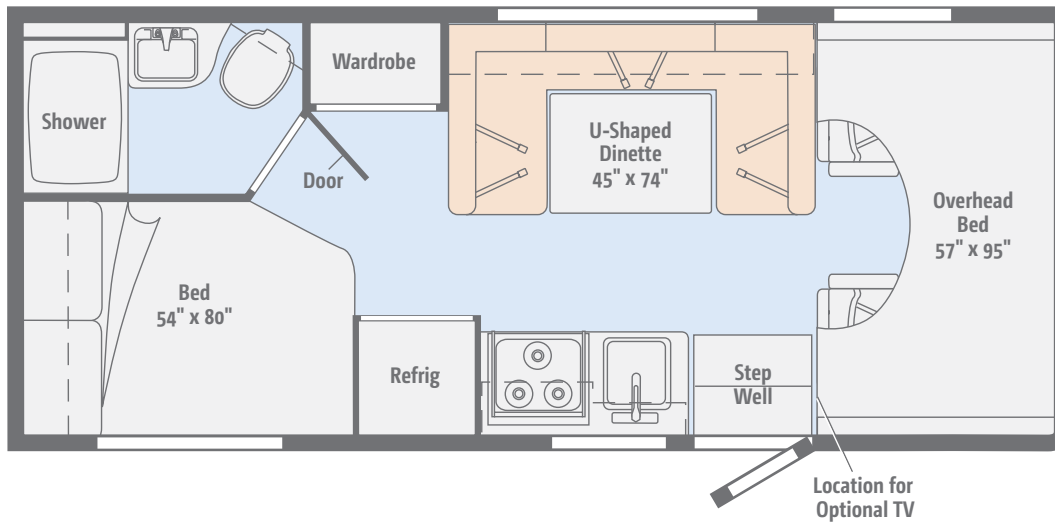
 Visit BetterBuiltRVs.com to gain real insight into what goes into a Winnebago Industries motorhome.

TAKE A TOUR We're proud of our processes, state-of-the-art facilities, and the people who make Winnebago Industries number one. We invite you to visit our complex in Forest City, Iowa, for a first-hand look at the dedication and technology behind every motorhome we build.



NEW 22R

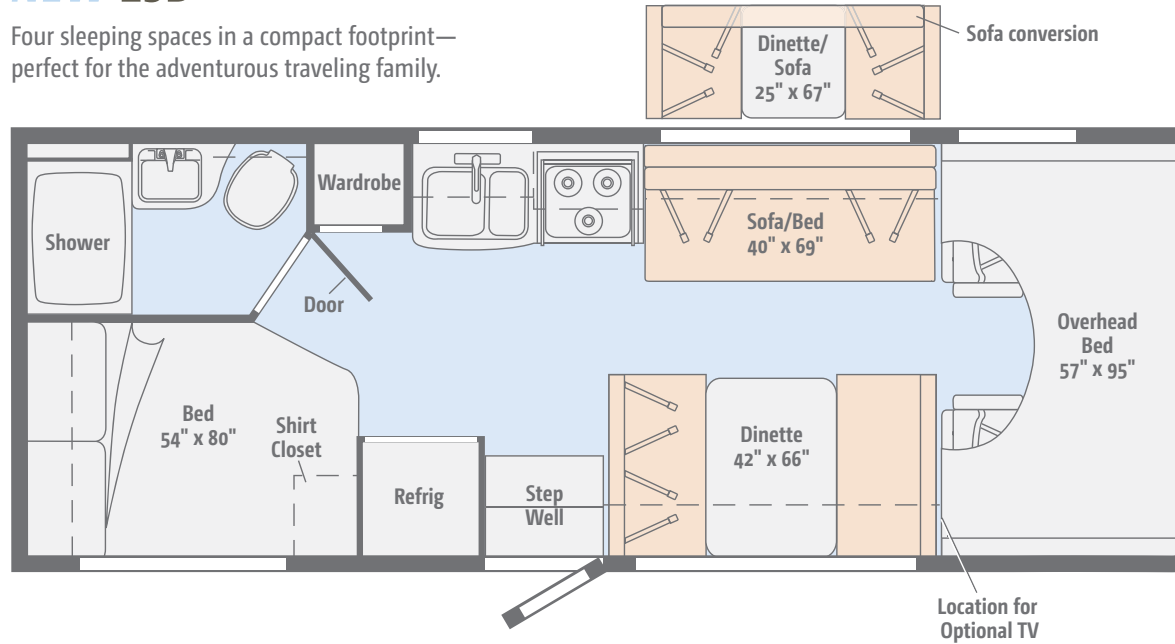
The U-shaped dinette and a rear corner bed make for comfortable places to relax when the driving day is done.



Dimensions shown are for sleeping space only and may vary due to styling differences. Dashed lines denote overhead storage areas. Floorplans and specifications are also available online at GoWinnebago.com.

NEW 25B

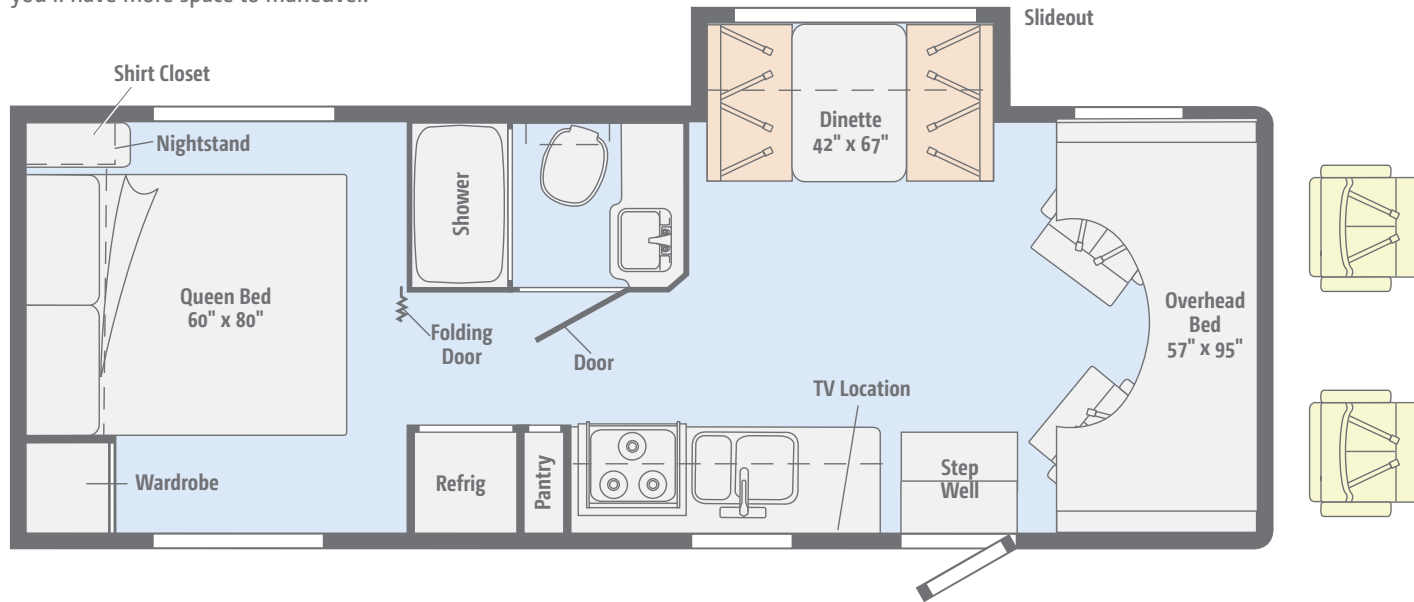
Four sleeping spaces in a compact footprint— perfect for the adventurous traveling family.



Dimensions shown are for sleeping space only and may vary due to styling differences. Dashed lines denote overhead storage areas. Floorplans and specifications are also available online at GoWinnebago.com.

NEW 27Q | 27QP

With its slideout dinette and a walk-around queen bed, you'll have more space to maneuver.

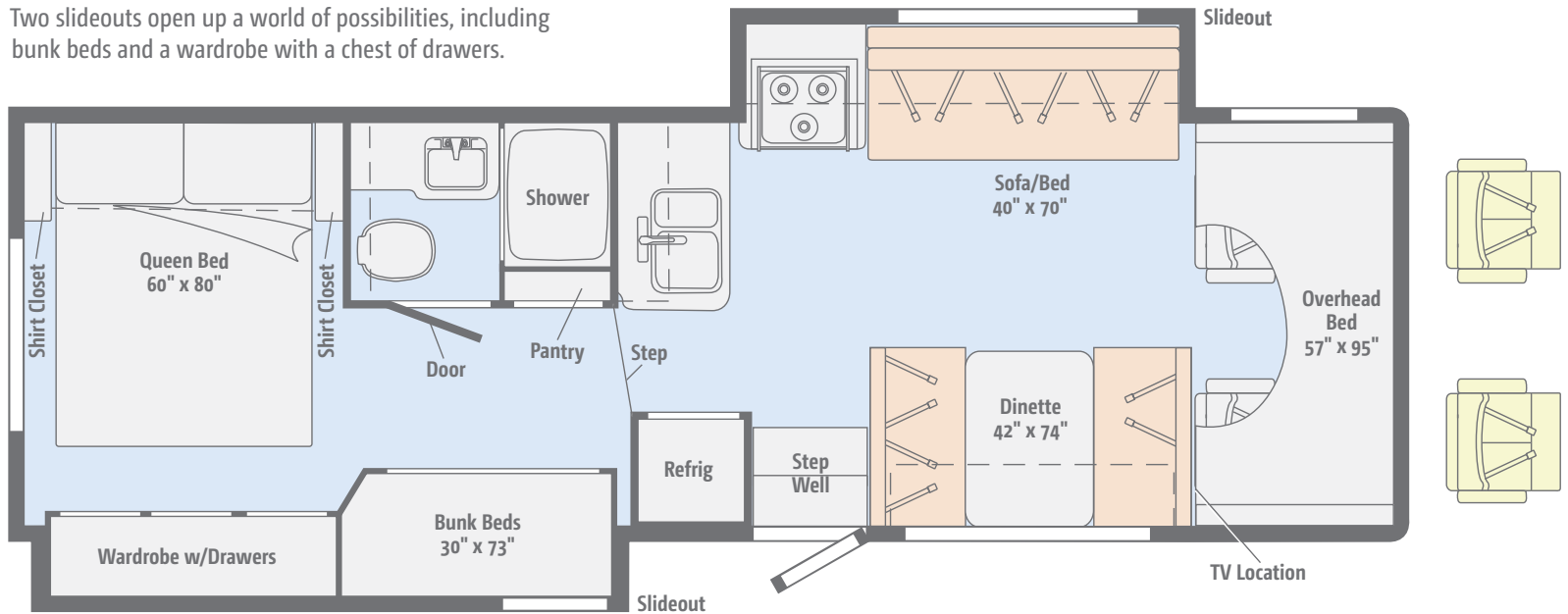


Leatherette	Premier Package Leatherette Cab seats with Upgrade	Vinyl

Dimensions shown are for sleeping space only and may vary due to styling differences. Dashed lines denote overhead storage areas. Floorplans and specifications are also available online at GoWinnebago.com.

NEW 31H | 31HP

Two slideouts open up a world of possibilities, including bunk beds and a wardrobe with a chest of drawers.

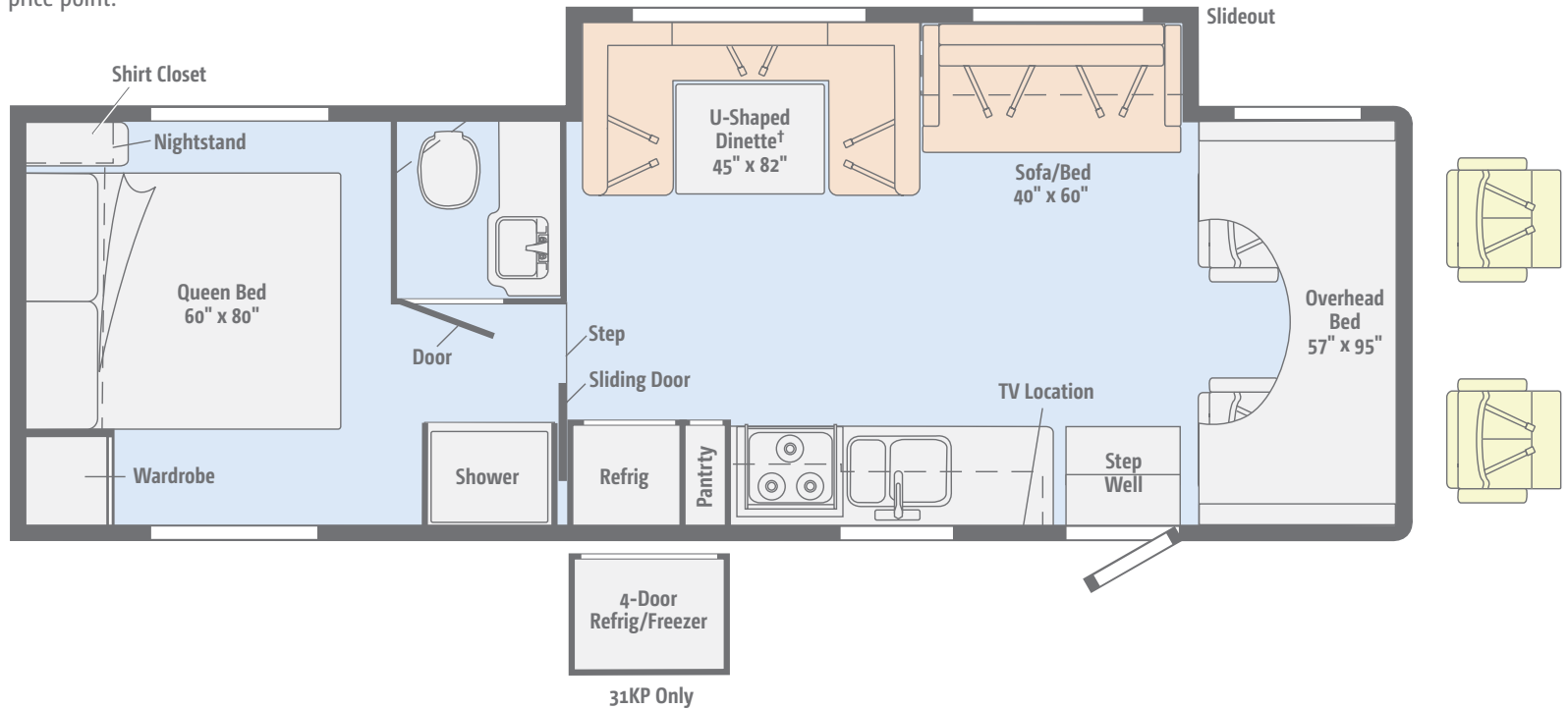


Leatherette	Premier Package Leatherette Cab seats with Upgrade	Vinyl

Dimensions shown are for sleeping space only and may vary due to styling differences. Dashed lines denote overhead storage areas. Floorplans and specifications are also available online at GoWinnebago.com.

NEW 31K | 31KP

The large slideout holds a sofa/bed and U-shaped dinette—a feature you don't often find at this price point.



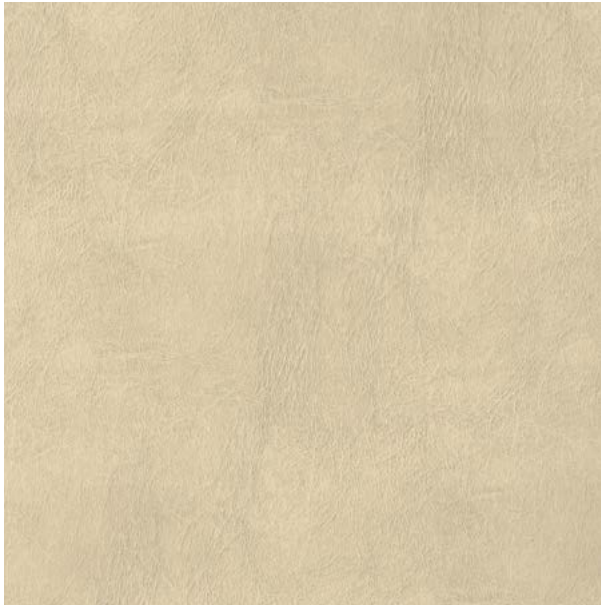
Leatherette	Premier Package Leatherette Cab seats with Upgrade	Vinyl

Dimensions shown are for sleeping space only and may vary due to styling differences. Dashed lines denote overhead storage areas. Floorplans and specifications are also available online at GoWinnebago.com.



Choose from three fabric collections. Select Forest Cherry or Coffee-Glazed Vienna Maple Cabinetry with the Minnie Winnie, each with Satin Nickel hardware. Choose from Coffee-Glazed Vienna Maple or Coffee-Glazed Honey Cherry with the Minnie Winnie Premier upgrade.

Coastal



Leatherette



Accent



Bedsread



HD Laminate Countertop



Corian Countertop
(Premier Galley)



Wall Board



Vinyl



Forest Cherry
(Minnie Winnie only)



Coffee-Glazed Vienna Maple



Coffee-Glazed Honey Cherry
(Minnie Winnie Premier only)



Choose from three fabric collections. Select Forest Cherry or Coffee-Glazed Vienna Maple Cabinetry with the Minnie Winnie, each with Satin Nickel hardware. Choose from Coffee-Glazed Vienna Maple or Coffee-Glazed Honey Cherry with the Minnie Winnie Premier upgrade.

Cider



Leatherette



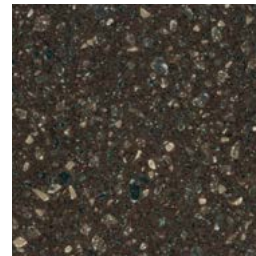
Accent



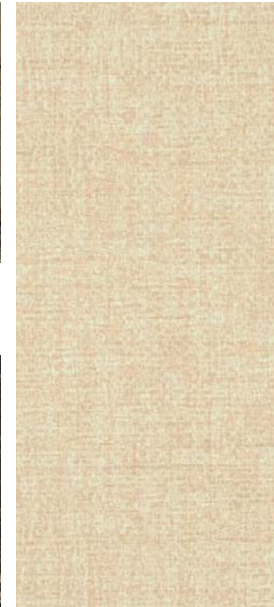
Bedspread



HD Laminate Countertop



Corian Countertop
(Premier Galley)



Wall Board



Vinyl



Forest Cherry
(Minnie Winnie only)



Coffee-Glazed Vienna Maple



Coffee-Glazed Honey Cherry
(Minnie Winnie Premier only)



Choose from three fabric collections. Select Forest Cherry or Coffee-Glazed Vienna Maple Cabinetry with the Minnie Winnie, each with Satin Nickel hardware. Choose from Coffee-Glazed Vienna Maple or Coffee-Glazed Honey Cherry with the Minnie Winnie Premier upgrade.

Sahara



Leatherette



Accent



Bedsread



HD Laminate Countertop



Corian Countertop
(Premier Galley)



Wall Board



Vinyl



Forest Cherry
(Minnie Winnie only)



Coffee-Glazed Vienna Maple



Coffee-Glazed Honey Cherry
(Minnie Winnie Premier only)

Minnie Winnie | Minnie Winnie Premier

Graphics & Paint



The Minnie Winnie offers a choice of standard graphics with white sidewalls or taupe sidewalls. The Minnie Winnie Premier comes with deluxe graphics and taupe sidewalls. Champagne sidewalls replacing Taupe sidewalls as running line change December 2013.



Polar (with white sidewalls)
STANDARD GRAPHICS



Desert (with taupe sidewalls)
STANDARD GRAPHICS



Camel (with taupe sidewalls)
DELUXE GRAPHICS



Weights & Measures

	22R	25B	27Q 27QP	31H 31HP	31K 31KP
Length	23'11"	26'5"	28'6"	32'7"	32'7"
Exterior Height ¹	11'	11'	11'1"	11'1"	11'2"
Exterior Width ²	8'5.5"	8'5.5"	8'5.5"	8'5.5"	8'5.5"
Exterior Storage ³ (cu. ft.)	61	76	83	85	101
Awning Length	14'	17'	17'	10'5"	20'
Interior Height	6'10"	6'10"	6'10"	6'10"/6'5.5"***	6'10"/6'5.5"***
Interior Width	8'	8'	8'	8'	8'
Freshwater Tank Capacity ⁴ (gal.)	40	40	44	44	44
Water Heater Capacity (gal.)	6	6	6	6	6
Holding Tank Capacity - Black/Gray ⁴ (gal.)	21/24	23/27	30/35	34/30	30/30
LP Capacity ⁵ (gal.)	18	18	18	18	18
Fuel Capacity (gal.)	55	55	55	55	55
GCWR ⁶ (lbs.)	13,000/18,500 ^A	18,500 ^A	22,000 ^B	22,000 ^B	22,000 ^B
GVWR (lbs.)	11,500 ^A	11,500 ^A	14,500 ^B	14,500 ^B	14,500 ^B
GAWR - Front (lbs.)	4,600 ^A	4,600 ^A	5,000 ^B	5,000 ^B	5,000 ^B
GAWR - Rear (lbs.)	7,800 ^A	7,800 ^A	9,600 ^B	9,600 ^B	9,600 ^B
Wheelbase	158"	182"	190"	190"	220"

**Rear of coach A - Ford E350 Chassis B - Ford E450 Chassis

Optional Package Upgrades

Convenience and Appearance Package auxiliary rear air springs (NA 22R, 25B), front bunk ladder, glass shower door, powered patio awning with LED lighting, HDTV w/DVD player, rear ladder, Radio/Rearview Monitor System, stainless steel wheel liners and valve extenders, 5,000-lb. hitch w/7 pin connector, premium high-gloss fiberglass skin in white or taupe

Comfort and Safety Package 15,000 BTU roof A/C, 80" bed, child seat tether, double-door refrigerator, vinyl floor covering throughout coach, 4,000-watt Cummins Onan® gas generator, high-definition laminate countertops, high-gloss fiberglass, in-dash radio/CD player, leatherette, patio awning, reinforced seat belt mounts, residential size toilet, roadside assistance, RVIA seal, sealed cabinet for cooktop, steel appliance tie-downs, steel stepwell

Minnie Winnie Premier Package Convenience and Appearance Package, Comfort and Safety Package, auxiliary start circuit, front fiberglass cab, deluxe exterior graphics, glazed cabinetry, Corian® countertop for galley w/undermount sink and Corian sink cover, fiberglass shower surround, soft vinyl ceiling, fiberglass running boards w/wheel lips, deluxe exterior mirror upgrade w/chrome heads and sideview camera, leatherette cab seats, large refrigerator w/raised panel inserts, 19" HDTV (2) bunk bed area (31HP), 24" HDTV bedroom (27QP, 31KP), 39" HDTV (31KP), black tank flush system, bunk privacy curtain, cabinet over U-Dinette (31KP), headboard, Dream Dinette™ table mechanism (27QP, 31HP), fabric/leatherette trim on U-Dinette (31KP), fold-over bedspread w/pillow fillers, dash appliqué, Jack digital HDTV antenna, LED ceiling lights, MCD solar/blackout roller shades (lounge, dinette, bedroom), porcelain toilet, rear trunk storage liner, stainless steel lavatory sink (31HP, 31KP), struts on overhead cabinet doors (31HP, 31KP), bath towel bar, (Two) deep-cycle, Group 24 batteries, single control faucets, window treatment upgrade

Premier Package Options Dual-glazed, thermo-insulated windows, 3-burner range w/oven, heated drainage system

Chassis

Ford® E350 Chassis (22R) 255-hp 5.4 L Triton® V8 engine, Torqshift™ 5-speed automatic transmission w/overdrive, 120-amp. alternator

Ford E350 Chassis (25B) 305-hp 6.8L SEFI Triton V10 engine, Torqshift 5-speed automatic transmission w/overdrive, 120-amp. alternator

Ford E450 Chassis (27Q/27QP, 31H/31HP, 31K/31KP) 305-hp 6.8L SEFI Triton V10 engine, Torqshift 5-speed automatic transmission w/overdrive, 120-amp. alternator

4-wheel ABS

Wheel covers (Ford Chassis)

OPTIONAL EQUIPMENT

Ford E350 Chassis (22R) 305-hp 6.8L SEFI Triton V10 engine, Torqshift 5-speed automatic transmission w/overdrive, 120-amp. alternator

Stainless steel wheel liners

Trailer Hitch 5,000-lb. drawbar/350-lb. maximum vertical tongue weight (22R, 25B, 27Q, 31H, 31K) (NA if Convenience and Appearance Package is ordered)



Ford E450 Chassis

Cab Conveniences

Cab seats armrests, lumbar support and multi-adjustable slide/recline (27Q swivel)

3-point seat belts

Air bags driver and passenger

12-volt powerpoint

Power steering w/tilt and cruise control

Power door locks

Sunvisors

Manual mirrors w/breakaway arms

OPTIONAL EQUIPMENT

Radio/Rearview Monitor System 6" LCD touch screen color monitor, remote, AM/FM stereo, iPod®/MP3 input, color rear camera



Interior

Amplified digital TV antenna system

Pleated night shades (lounge, dinette, and bedroom)

Mini blinds (galley)

Systems monitor panel

Roof vent (bedroom and front bunk area)

Powered roof vent (bath)

Cab privacy curtain

Tinted windows

Vinyl ceiling

OPTIONAL EQUIPMENT

26" HDTV w/DVD player and remote (22R, 25B, 31H)

32" HDTV w/DVD player and remote (27Q, 31K)

Tinted, dual-glazed, thermo-insulated windows

Galley

Microwave oven

3-burner range top w/storage below

Vented range hood

OPTIONAL EQUIPMENT

3-burner range w/oven

Bath

Shower curtain

Flexible showerhead

Skylight

Bedroom

Bunk beds w/covered foam mattresses, mattress covers, storage compartment and privacy curtains (31H)

Mattress cover (22R, 25B)

Bedsread (27Q, 31H, 31K)

OPTIONAL EQUIPMENT

Two HDTVs (31H bunk beds)

Exterior

Porch light

Running boards

Storage compartment

OPTIONAL EQUIPMENT

Slideout cover(s) (27Q, 31H, 31K)

Heating & Cooling System

20,000 BTU furnace (22R, 25B)

30,000 BTU furnace (27Q/27QP, 31H/31HP, 31K/31KP)

Electrical System

AC/DC load center, 45-amp. converter/charger

30-amp. power cord

TV jack and AC receptacle near entrance door

Deep-cycle, Group 24 battery

Coach battery disconnect system

Automatic dual-battery charge control

Plumbing System

City water hookup

On-demand water pump

6-gallon LP water heater w/electronic ignition

Permanent-mount LP tank w/gauge

OPTIONAL EQUIPMENT

Heated electric drainage system

Safety

LP, smoke and carbon monoxide detectors

10 BC fire extinguisher

Ground fault interrupter

Child seat tether anchor (NA 22R)

Warranty⁷

12-month/15,000-mile basic limited warranty⁸

36-month/36,000-mile limited warranty on structure⁸

10-year limited parts-and-labor warranty on roof skin⁸

- ¹ The height of each model is measured to the top of the tallest standard feature and is based on the curb weight of a typically equipped unit. The actual height of your vehicle may vary by several inches depending on chassis or equipment variations. Please contact your dealer for further information.
- ² Floorplans feature a wide-body design - over 96". In making your purchase decision, you should be aware that some states restrict access on some or all state roads to 96" in body width. Before making your purchase decision, you should confirm the road usage laws in the states of interest to you.
- ³ The load capacity of your motorhome is designated by weight, not by volume, so you cannot necessarily use all available space when loading your motorhome.
- ⁴ Capacities are based on measurements prior to tank installation. Slight capacity variations can result due to installation applications.
- ⁵ Capacities shown are tank manufacturer's listed water capacity (WC). Actual filled LP capacity is 80% of listing due to overfilling prevention device on tank.
- ⁶ Actual towing capacity is dependent on your particular loading and towing circumstances which includes the GVWR, GAWR, and GCWR, as well as adequate trailer brakes. Please refer to the Operator's Manual of your vehicle for further towing information.
- ⁷ See separate chassis warranty.
- ⁸ See your dealer for complete warranty information.

Winnebago Industries* continuing program of product improvement makes specifications, equipment, model availability, and prices subject to change without notice. Published content reflects the most current product information at time of printing. Please consult your dealer for individual vehicle features and specifications.

Colton RV & Marine
3122 Niagara Falls Blvd
North Tonawanda, NY 14120
(716) 694-0188
www.ColtonRV.com

Colton RV & Marine
3443 Southwestern Blvd.
Orchard Park, NY 14127
(716) 957-3250
www.Coltonrv.com

GoWinnebago.com Has All The Answers

Visit GoWinnebago.com on your computer, smartphone or tablet for the latest product information and updates.



PREFERRED CARE PROGRAM

We back our motorhomes with best-in-class support both before *and* after the sale:

- 12-month/15,000-mile basic limited warranty
- 36-month/36,000-mile limited warranty on structure
- 10-year limited parts-and-labor warranty on roof skin
- Complimentary 24-hour roadside assistance program



TRIP Saver
FAST TRACK PARTS

- TripSaver® Fast Track Parts guarantees that in-stock warranty parts ship directly to your dealer within 24 hours
- National dealer service network



WIT CLUB

Join the Club, Join the Fun

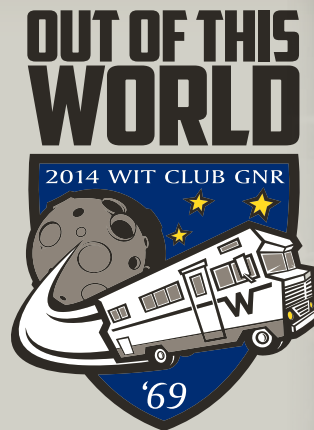
As a Winnebago motorhome owner, you are invited to join the WIT Club. It's a great way to take full advantage of your new coach and meet fun-loving WIT Club members from across the country who make motorhome adventures a way of life.



Members enjoy:

- Caravans and rallies
- Newsletters
- Local and state group activities
- RV travel benefits

See more at WITclub.com



Grand National Rally

In 1969, two things happened: Neil Armstrong took mankind's first steps on the moon, and Winnebago Industries' WIT Club launched its first Grand National Rally in Forest City, Iowa. Every year since then, thousands of rally-goers connect with old friends to enjoy concerts, tours, activities, and more. Blast off for an adventurous week in July to celebrate 45 years of interstate land roving at the 2014 "Out of This World" Grand National Rally. It's a mission you'll never forget!