



Surveyor

BY FOREST RIVER

Surveyor
LUXURY
BY FOREST RIVER

Surveyor
LEGEND
BY FOREST RIVER



A TOP SELLING LIGHT WEIGHT BRAND NATIONALLY
OVER 15 YEARS OF SUPERIOR CRAFTSMANSHIP AND EXPERIENCE



INTERIOR PANEL
INSULATION
AZDEL
FIBERGLASS
EXTERIOR

AZDEL® EXTERIOR CONSTRUCTION

XTRM PLY PVC ROOF MAXIMUM PROTECTION

- No Treatments Ever!
- 15 Year Warranty, 100% Coverage
- 2x the Tear Resistance of Rubber & TPO
- Stays Significantly Cooler Than Rubber & TPO
- No chalk, streaks, or spots



Pet Friendly

- PET BOWLS
- PET LEASH CONNECTION
- OUTSIDE SHOWER

Surveyor LEGEND

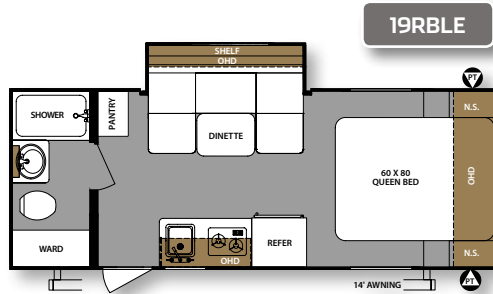
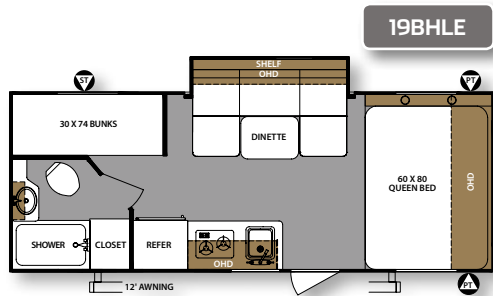
BY FOREST RIVER

ULTRA-LIGHT. LEGENDARY VALUE.

Superior craftsmanship is evident in every Surveyor Legend series. Lightweight floorplans are smartly designed for ultimate camping comfort, resulting in unmatched value in its class.

FLOORPLANS

ST=Storage PT=Pass Thru Storage OHD=Overhead Cabinet



SPECIFICATIONS**

MODEL	19BHLE	19RBLE
Unloaded Vehicle Weight	3599	3594
Cargo Carrying Capacity	1101	1166
Hitch Weight	300	360
Overall Length	23' 4"	23' 4"
Exterior Width	88"	88"
Exterior Height (with A/C)	10' 1"	10' 1"
Fresh Water (gal.)	36	36
Grey Water (gal.)	30	30
Black Water (gal.)	30	30
Awning Size	12'	14'

** We know weights and dimensions are an important part of your buying decision. Please refer to the back page for specification definitions.

BUILT TO A HIGHER STANDARD

- ALUMINUM CAGE CONSTRUCTION.** Aluminum framing around all openings resulting in the best structural integrity in its class.
- WALL CONSTRUCTION.**
 - Pinch roll laminated with 100% glue coverage.
 - Azdel exterior.
 - Block foam insulated.
- FULLY WALKABLE ROOF.** 16" on center aluminum trusses (N/A 19BHLE and 19RBLE) featuring 3/8" decking, residential insulation and PVC roof membrane for maximum durability and protection.
- ENCLOSED & HEATED UNDERBELLY.** Fully enclosed underbelly with radiant heat (model specific). Our 2 inch aluminum floor features block foam insulation and double layer plywood on the interior, offset for higher integrity.

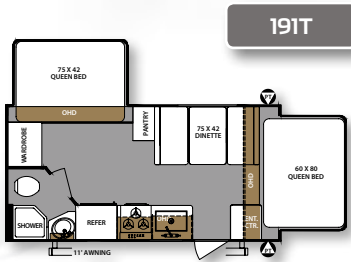


- DUCTED A/C** Unlike other manufacturers, every model we build comes standard with ducted A/C featuring adjustable vents throughout (N/A 19BHLE and 19RBLE).

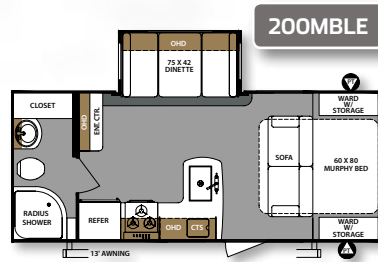


FLOORPLANS

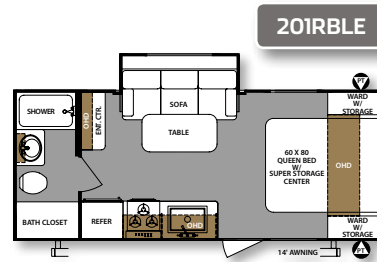
ST=Storage PT=Pass Thru Storage OHD=Overhead Cabinet



191T



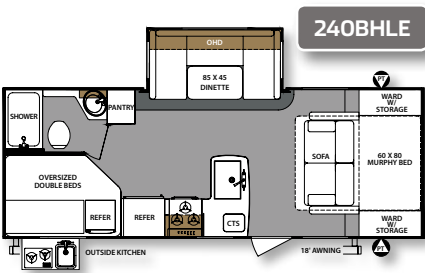
200MBLE



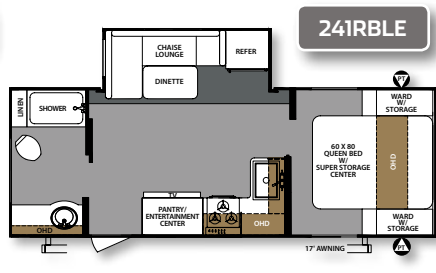
201RBLE



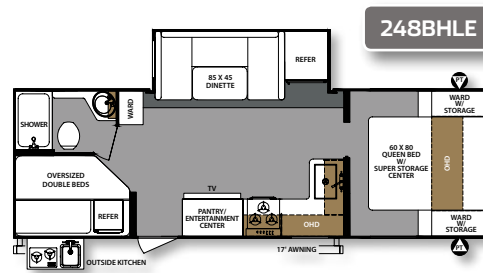
LEGEND
by Forest River



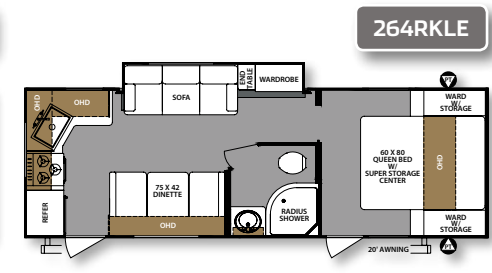
240BHLE



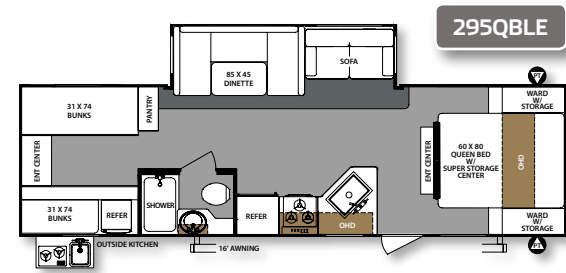
241RBLE



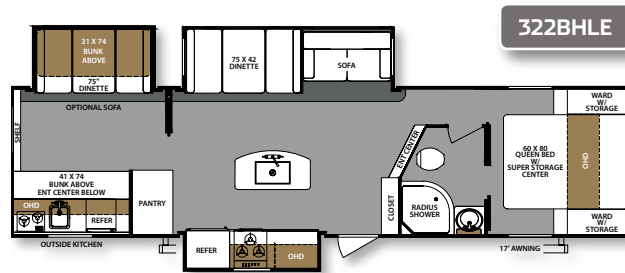
248BHLE



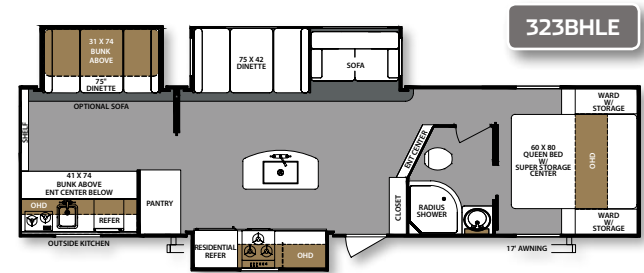
264RKLE



295QBLE



322BHLE



323BHLE

SPECIFICATIONS**

MODEL	191T	200MBLE	201RBLE	240BHLE	241RBLE	248BHLE	264RKLE	295QBLE	322BHLE	323BHLE
Unloaded Vehicle Weight	3396	4601	4158	5137	4961	5504	4886	5995	7404	7581
Cargo Carrying Capacity	1440	2879	1267	2380	2579	2106	2743	1782	2144	2015
Hitch Weight	436	480	425	517	540	610	629	777	748	796
Overall Length	20' 4"	23' 8"	24' 5"	25' 11"	27' 0"	29' 11"	29' 4"	33' 0"	37' 1"	37' 1"
Exterior Width	96"	96"	96"	96"	96"	96"	96"	96"	96"	96"
Exterior Height (with A/C)	10' 5"	11' 0"	10' 5"	11' 3"	11' 2"	11' 3"	10' 5"	11' 2"	11' 5"	11' 5"
Fresh Water (gal.)	46	46	46	46	46	46	46	46	46	46
Grey Water (gal.)	40	40	40	40	65	60	60	40	75	75
Black Water (gal.)	30	30	30	30	35	30	30	30	35	35
Awning Size	11'	13'	14'	18'	17'	17'	20'	16'	17'	17'

** We know weights and dimensions are an important part of your buying decision. Please refer to the back page for specification definitions.

#SURVEYORLIFEISGOOD
visit

[ForestRiverInc.com/
Surveyor](http://ForestRiverInc.com/Surveyor)

for more photos, virtual
tours, training videos and
the latest model
standards and
options.

Surveyor
LEGEND
BY FOREST RIVER



240BHLE

60 80
RESIDENTIAL SIZE MURPHY BEDS



240BHLE SHOWN IN COCOA DÉCOR



240BHLE, 248BHLE & 295QBLE



240BHLE SHOWN IN COCOA DÉCOR



241RBLE SHOWN IN CREAM DÉCOR



241RBLE SHOWN IN CREAM DÉCOR



248BHLE SHOWN IN COCOA DÉCOR



248BHLE SHOWN IN COCOA DÉCOR

Surveyor LUXURY

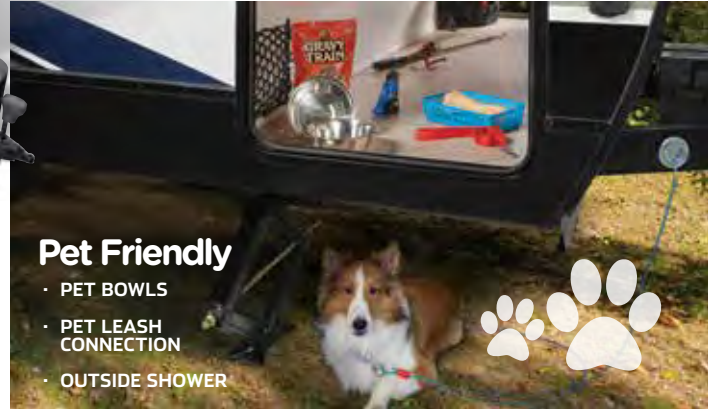
BY FOREST RIVER

A SUPERIOR LUXURY LIGHTWEIGHT.

The Surveyor Luxury series offers residential style kitchen cabinetry, spacious pantries, seamless kitchen countertops, dinettes with storage, large entertainment centers and residential size beds, resulting in affordable elegance in every floorplan. Surveyor value without compromise.

BUILT TO A HIGHER STANDARD

- 1 5 SIDE ALUMINUM CAGE CONSTRUCTION.**
Aluminum framing around all openings resulting in the best structural integrity in its class.
- 2 WALL CONSTRUCTION.**
• Pinch roll laminated with 100% glue coverage.
• Azdel exterior.
• Block foam insulated.
- 3 FULLY WALKABLE ROOF.**
16" on center aluminum trusses featuring 3/8" decking, residential insulation and PVC roof membrane for maximum durability and protection.
- 4 ENCLOSED & HEATED UNDERBELLY.**
Fully enclosed underbelly with radiant heat. Our 2 inch aluminum floor features block foam insulation and double layer plywood on the interior, offset for higher integrity.
- 5 3/4 FIBERGLASS CAP WITH WINDOW.**
Our luxury lineup features a 3/4 gelcoat fiberglass cap with front window, resulting in maximum protection and visibility.



Pet Friendly

- PET BOWLS
- PET LEASH CONNECTION
- OUTSIDE SHOWER



WASHER/DRYER PREP
(33KFKDS ONLY)



271RLS SHOWN IN COCOA DÉCOR



250FKS



267RBSS SHOWN IN CREAM DÉCOR

#SURVEYORLIFEISGOOD
visit
[ForestRiverInc.com/
Surveyor](http://ForestRiverInc.com/Surveyor)
for more photos, virtual
tours, training videos and
the latest model
standards and
options.

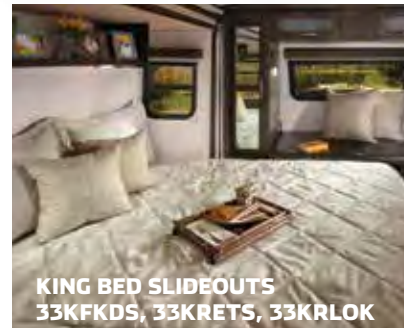
250FKS



33KRLOK SHOWN IN COCOA DÉCOR



33KFKDS SHOWN IN CREAM DÉCOR



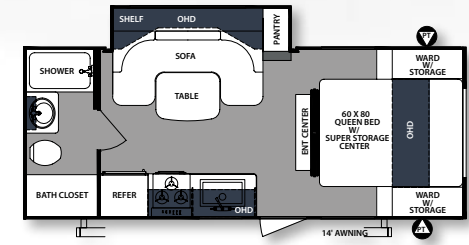
KING BED SLIDEOUTS
33KFKDS, 33KRETS, 33KRLOK



OVERSIZED POTS & PANS
STORAGE (SELECT MODELS)

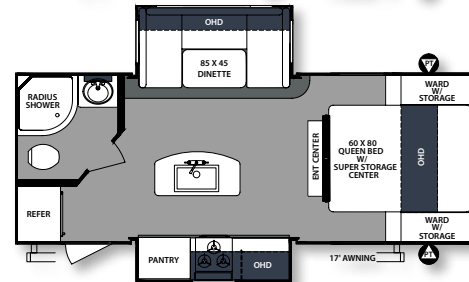
FLOORPLANS

ST=Storage PT=Pass Thru Storage OHD=Overhead Cabinet



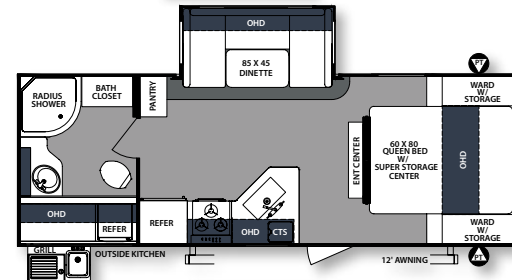
220RBS*

* WEST COAST
PRODUCTION ONLY

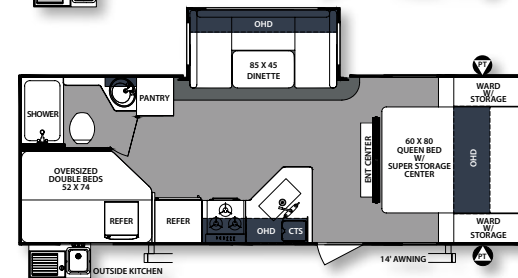


226RBD5*

* WEST COAST
PRODUCTION ONLY



243RBS



245BHS

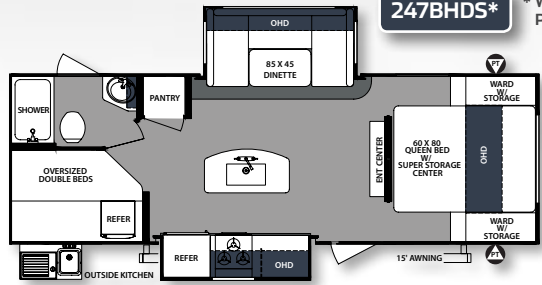
SPECIFICATIONS**

MODEL	220RBS*	226RBD5*	243RBS	245BHS	247BHD5*	250FKS	251RKS	265RLD5	266RLD5	267RBSS	271RLS	287BHSS	33KRETS	33KRLOK	33KFKDS
Unloaded Vehicle Weight	4523	5028	5174	5204	5836	5543	5721	6036	6089	5787	5580	6065	7473	7614	7128
Cargo Carrying Capacity	1008	2630	2380	2422	1745	2232	2047	1726	1689	1831	1976	1545	2157	1951	2547
Hitch Weight	531	658	554	626	581	775	768	762	778	618	556	610	830	765	875
Overall Length	24' 11"	25' 10"	27' 8"	28' 3"	29' 4"	28' 9"	29' 6"	31' 3"	31' 3"	30' 11"	30' 5"	32' 10"	36' 5"	36' 11"	36' 11"
Exterior Width	96"	96"	96"	96"	96"	96"	96"	96"	96"	96"	96"	96"	96"	96"	96"
Exterior Height (with A/C)	10' 5"	11' 0"	11' 0"	11' 0"	11' 3"	11' 3"	11' 2"	11' 2"	11' 2"	11' 3"	11' 3"	11' 3"	11' 5"	11' 5"	11' 5"
Fresh Water (gal.)	46	46	46	46	46	46	46	46	46	46	46	46	46	46	46
Grey Water (gal.)	40	40	40	40	70	60	60	40	40	60	40	60	75	75	60
Black Water (gal.)	30	30	30	30	30	30	30	30	30	30	30	30	35	35	30
Awning Size	14'	17'	12'	14'	15'	21'	20'	18'	18'	19'	21'	19'	20'	21'	21'

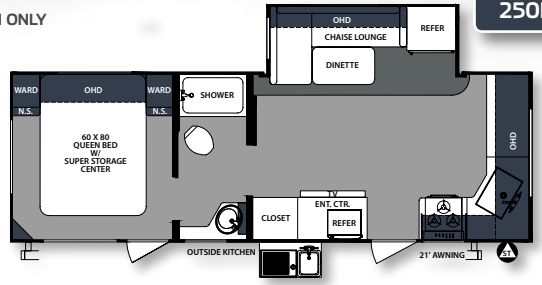
* WEST COAST PRODUCTION ONLY ** We know weights and dimensions are an important part of your buying decision. Please refer to the back page for specification definitions.

247BHDS*

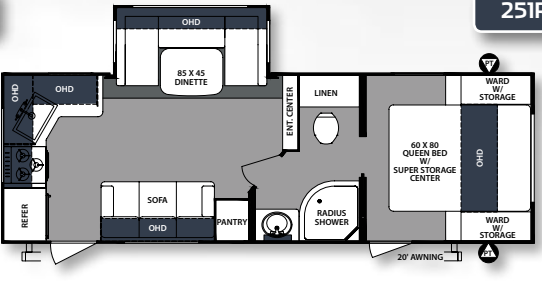
* WEST COAST
PRODUCTION ONLY



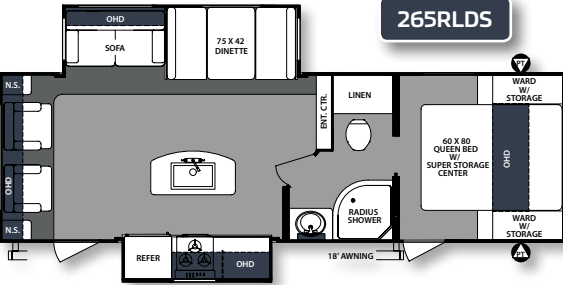
250FKS



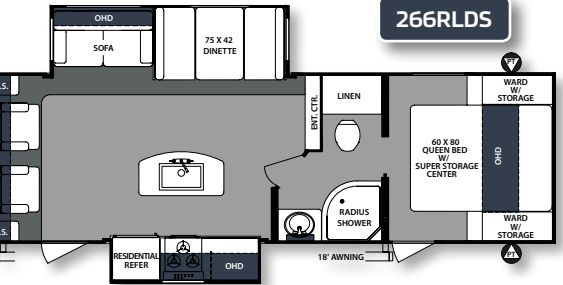
251RKS



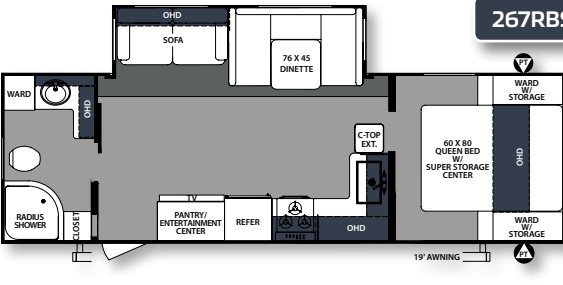
265RLDS



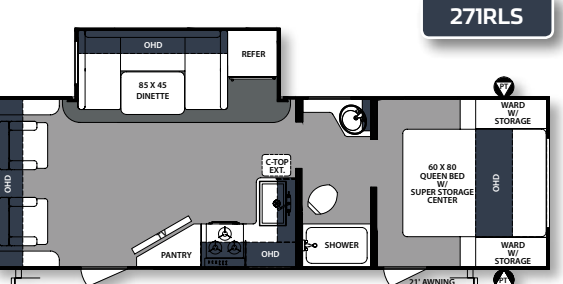
266RLDS



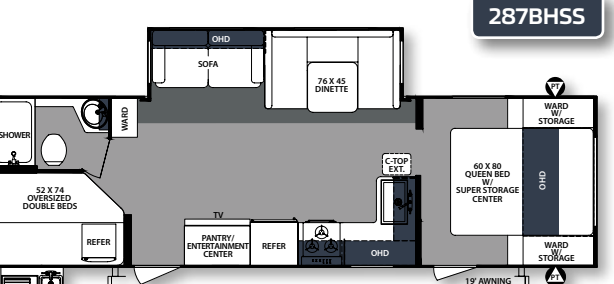
267RBSS



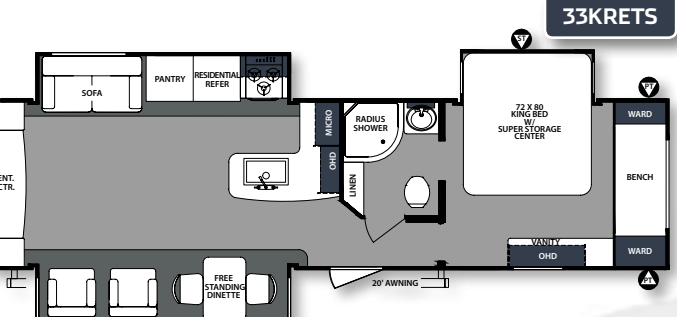
271RLS



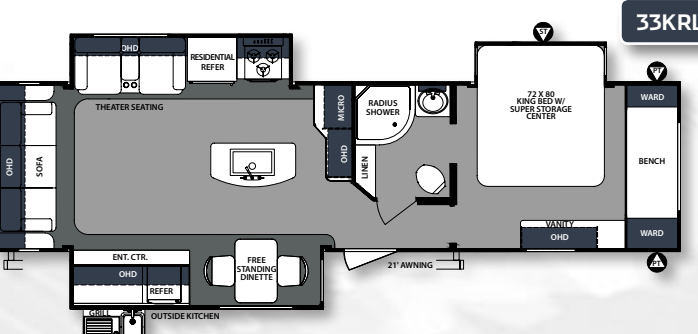
287BHSS



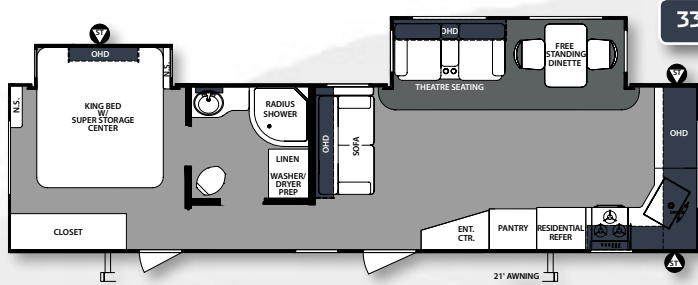
33KRETS

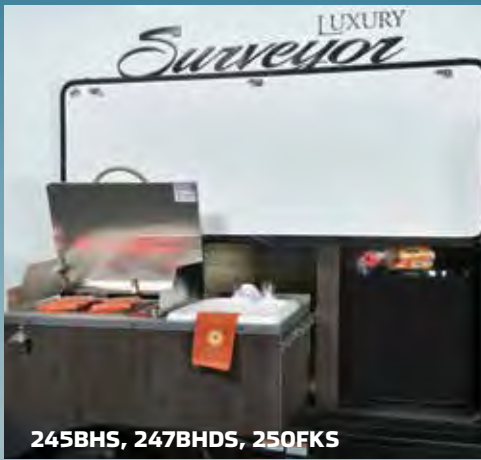


33KRLOK



33KFKDS

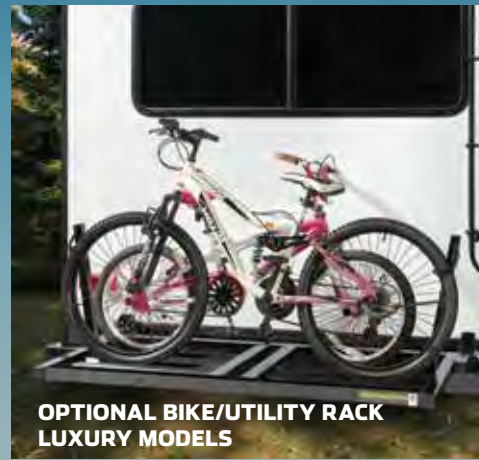




245BHS, 247BHDS, 250FKS



33KRLOK



OPTIONAL BIKE/UTILITY RACK
LUXURY MODELS



52 CU. FT. PASS THRU STORAGE
(SELECT MODELS)

FREE MEMBERSHIP to Forest River Owners' Group

www.forestriverfrog.com



Forest River Owner "Digital Kit" App

Now you can have your Owner's Manual with you wherever you are. Download our FREE App from the App Store or Google Play and you'll have the information right at your fingertips.



PRE-DELIVERY INSPECTION FACILITY

20,000 square feet of quality assurance. The bare essentials for a premium product. This state-of-the-art facility gives immediate daily feedback to production for quality assurance in every unit built.

CUSTOMER SATISFACTION



www.ForestRiverBuyLocal.com

GVWR (Gross Vehicle Weight Rating) - is the maximum permissible weight of the unit when fully loaded. It includes all weights, inclusive of all fluids, cargo, optional equipment and accessories. For safety and product performance do NOT exceed the GVWR.

GAWR (Gross Axle Weight Rating) - is the maximum permissible weight, including cargo, fluids, optional equipment and accessories that can be safely supported by a combination of all axles.

UVW (Unloaded Vehicle Weight)* - is the typical weight of the unit as manufactured at the factory. It includes all weight at the unit's axle(s) and tongue or pin and LP Gas. The UVW does not include cargo, fresh potable water, additional optional equipment or dealer installed accessories.

*Estimated Average based on standard build optional equipment.

CCC (Cargo Carrying Capacity)** - is the amount of weight available for fresh potable water, cargo, additional optional equipment and accessories. CCC is equal to GVWR minus UVW. Available CCC should accommodate fresh potable water (8.3 lbs per gallon). Before filling the fresh water tank, empty the black and gray tanks to provide for more cargo capacity.

** Estimated average based on standard build optional equipment.

Each Forest River RV is weighed at the manufacturing facility prior to shipping. A label identifying the unloaded vehicle weight of the actual unit and the cargo carrying capacity is applied to every Forest River RV prior to leaving our facilities. The load capacity of your unit is designated by weight, not by volume, so you cannot necessarily use all available space when loading your unit.

Surveyor
BY FOREST RIVER

Surveyor Division
Forest River, Inc.
2405 Century Dr.
Goshen, IN 46528
(574) 642.3119

www.forestriverinc.com/surveyor
www.forestriveraccessories.com



24/7 EMERGENCY ROADSIDE ASSISTANCE WITH VEHICLE PURCHASE*

TOWING	WINCH-OUT
JUMP-STARTS	MOBILE MECHANIC
TIRE CHANGES	TECHNICAL
FLUID DELIVERY	SUPPORT
LOCKOUT	DEALER LOCATOR
SERVICE	SERVICES



*VALID FOR 1 YEAR FROM DATE OF PURCHASE



Learn More

Scan this barcode using a QR Reader on your smart phone to learn more about Forest River.



A Berkshire Hathaway company.

All information contained in this brochure is believed to be accurate at the time of publication. However, during the model year, it may be necessary to make revisions and Forest River, Inc., reserves the right to make all such changes without notice, including prices, colors, materials, equipment and specifications as well as the addition of new models and the discontinuance of models shown in this brochure. Therefore, please consult with your Forest River dealer and confirm the existence of any materials, design or specifications that are material to your purchase decision. 12/18

©Copyright 2018 Forest River Inc - All Rights Reserved.

Your Local Surveyor Dealer

Colton RV & Marine
3122 Niagara Falls Blvd
North Tonawanda, NY 14120
(716) 694-0188
www.ColtonRV.com

Colton RV & Marine
3443 Southwestern Blvd.
Orchard Park, NY 14127
(716) 957-3250
www.Coltonrv.com