



Colton RV & Marine
3122 Niagara Falls Blvd
North Tonawanda, NY 14120
(716) 694-0188
www.ColtonRV.com

Colton RV & Marine
3443 Southwestern Blvd.
Orchard Park, NY 14127
(716) 957-3250
www.Coltonrv.com

TIFFIN MOTORHOMES
WHEREVER YOU GO, WE GO.

FULL BODY PAINT SCHEMES



Gold Coral



Maroon Coral



Nasa



Silver Sand



Sunlit Sand



Rocky Mountain Brown

MECHANICAL SPECIFICATIONS

Automotive

STANDARD EQUIPMENT ON ALL MODELS:

- Allison 3000 MH 6-speed Automatic Transmission with Lock-up (Torque Converter)
- Side Mounted Radiator
- Two-stage Compression Engine Brake
- Aluminum Wheels
- Four Air Bags on 36' & 40'
- Six Air Bags on 43'
- ABS Brakes
- Cruise Control
- VIP Smart Wheel
- Fog Lights
- Emergency Start Switch
- Adjustable Gas & Brake Pedals
- Independent Front Suspension

| FREIGHTLINER CHASSIS: | 36 QSP | 40 QXP | 43 QBP | 43 QGP | 43 QRP |
|--------------------------------------|--------|------------|------------|------------|------------|
| Cummins ISL 450 HP / 1250 Lb. Torque | NA | S | S | S | S |
| GVWR | NA | 34,600 Lb. | 44,600 Lb. | 44,600 Lb. | 44,600 Lb. |
| GAWR - Front | NA | 14,500 Lb. | 14,500 Lb. | 14,500 Lb. | 14,500 Lb. |
| GAWR - Rear | NA | 20,000 Lb. | 20,000 Lb. | 20,000 Lb. | 20,000 Lb. |
| GAWR - Tag Axle | NA | NA | 10,000 Lb. | 10,000 Lb. | 10,000 Lb. |
| GCWR | NA | 44,500 Lb. | 54,500 Lb. | 54,500 Lb. | 54,500 Lb. |
| Alternator Amps | NA | 160 | 160 | 160 | 160 |
| Trailer Hitch Capacity | NA | 10,000 Lb. | 10,000 Lb. | 10,000 Lb. | 10,000 Lb. |
| Fuel Tank (Gallons) - Dual Fuel Fill | NA | 150 | 150 | 150 | 150 |
| DEF Tank* (Gallons) | NA | 13 | 13 | 13 | 13 |

| POWERGLIDE® CHASSIS: | 36 QSP | 40 QXP | 43 QBP | 43 QGP | 43 QRP |
|--------------------------------------|------------|------------|------------|------------|------------|
| Cummins ISL 450 HP / 1250 Lb. Torque | S | S | S | S | S |
| GVWR | 36,600 Lb. | 36,600 Lb. | 49,900 Lb. | 49,900 Lb. | 49,900 Lb. |
| GAWR - Front | 15,600 Lb. | 15,600 Lb. | 15,600 Lb. | 15,600 Lb. | 15,600 Lb. |
| GAWR - Rear | 22,000 Lb. | 22,000 Lb. | 22,000 Lb. | 22,000 Lb. | 22,000 Lb. |
| GAWR - Tag Axle | NA | NA | 13,300 Lb. | 13,300 Lb. | 13,300 Lb. |
| GCWR | 46,600 Lb. | 46,600 Lb. | 59,900 Lb. | 59,900 Lb. | 59,900 Lb. |
| Alternator Amps | 170 | 170 | 170 | 170 | 170 |
| Trailer Hitch Capacity | 10,000 Lb. | 10,000 Lb. | 10,000 Lb. | 10,000 Lb. | 10,000 Lb. |
| Fuel Tank (Gallons) - Dual Fuel Fill | 150 | 150 | 150 | 150 | 150 |
| DEF Tank* (Gallons) | 15 | 15 | 15 | 15 | 15 |

* Diesel Exhaust Fluid (DEF) is the active component used in Selective Catalytic Reduction (SCR) engines to reduce nitrogen oxide emissions by 90% to meet EPA standards.

| OVERALL: | 36 QSP | 40 QXP | 43 QBP | 43 QGP | 43 QRP |
|---|---------|---------|---------|---------|---------|
| Overall Length (Approximate) | 36' 11" | 40' 4" | 43' 6" | 43' 6" | 43' 6" |
| Overall Height with Roof Air (Maximum) | 12' 7" | 12' 7" | 12' 7" | 12' 7" | 12' 7" |
| Interior Height | 84" | 84" | 84" | 84" | 84" |
| Overall Width | 101" | 101" | 101" | 101" | 101" |
| Interior Width | 96" | 96" | 96" | 96" | 96" |
| Fresh Water (Gallons) | 90 | 90 | 90 | 90 | 90 |
| Black Water (Gallons) | 50 | 50 | 50 | 50 | 50 |
| Grey Water (Gallons) | 70 | 70 | 70 | 70 | 70 |
| LPG Tank (Gallons; 80% Capacity Limit) | 35 | 35 | 24 | 24 | 24 |
| Basement Storage (Cubic Feet - Approximate) | 105 | 145 | 125 | 125 | 125 |
| Wheel Base | 238" | 276" | 294" | 294" | 294" |
| Tire Size | 295/80R | 295/80R | 295/80R | 295/80R | 295/80R |
| Minimum Garage Height | 13' | 13' | 13' | 13' | 13' |

Structural

STANDARD EQUIPMENT ON ALL MODELS:

- One-piece Molded Fiberglass Roof Cap
- Laminated Floor, Sidewall & Roof
- Steel/Aluminum Reinforced Structure

Exterior

STANDARD EQUIPMENT ON ALL MODELS:

- Fiberglass Front & Rear Caps
- Dual Fuel Fills
- BASF Full Body Paint with Front Cap Protective Film
- Large Tinted One-piece Windshield
- 17.5" Heated Chrome Power Mirrors with Remote Adjustment
- Single Motor Intermittent Wipers
- Undercoating
- 30" Wide Entry Door with Deadbolt
- Keyless Entry Door System
- Double Electric Step
- Exterior 32" TV
- Hydraulic Automatic Leveling Jacks
- Dual Pane Tinted Windows
- Amber Patio Light
- Automatic Door Awning
- Automatic Patio Awning
- Window Awning Package
- Slide-out Awnings with Metal-wrapped Covers
- Pass-thru Basement Storage
- Lockable Swing-out Exterior Storage Doors with Gas Shocks
- Heated Water & Holding Tank Compartments
- Tank Monitor Pad Located at Dump Station
- Auto Generator Start
- Six House Batteries
- Custom Mud Flap
- 50 Amp Service
- Power Cord Reel - 50 Amp
- Park Telephone Ready
- Cable Ready TV
- Black Holding Tank Flush System
- 110 V Exterior Receptacle
- Water Filter
- SeeLevel Tank Monitor
- Docking Lights
- Exterior Rinse Hose with Soap Dispenser & Paper Towel Holder
- Spotlight with Remote
- Concealed Air Horn
- Low Profile In-motion Satellite Dish
- Digital TV Antenna
- CB Radio Antenna
- Power Fantastic® Roof Vent with 3-speed Fan
- Roof Ladder
- Quiet A/C Roof-ducted System
- Luggage Compartment Lights
- Magnum Sine Wave Inverter

| AVAILABLE OPTIONS: | 36 QSP | 40 QXP | 43 QBP | 43 QGP | 43 QRP |
|--|--------|--------|--------|--------|--------|
| One Storage Compartment Slide-out Tray | O | O | O | O | O |
| Two Storage Compartment Slide-out Trays | NA | O | O | O | O |
| Onan® 8,000 KW Generator with Two Low Profile Roof Air Conditioners with Heat Pumps | S | S | NA | NA | NA |
| Onan® 10,000 KW Generator with Three Low Profile Roof Air Conditioners with Heat Pumps | NA | O | S | S | S |
| Power Solar Shade Integrated in Awning | O | O | O | O | O |
| 125 Watt Solar Panel | O | O | O | O | O |
| Pre-wired for Winegard Traveler Satellite | O | O | O | O | O |
| Basement Freezer / Refrigerator (with All Electric Option) | O | O | O | O | O |

Driver's Compartment

STANDARD EQUIPMENT ON ALL MODELS:

- 37" Front Overhead TV
- 12 V Disconnect Switch
- ITC Courtesy Light in Stepwell
- Adjustable Gas & Brake Pedals
- Driver's Side Power Window
- Adjustable Seatbelt Brackets
- Power Ultra Leather Driver & Passenger Seats Including Passenger Power Footrest
- Passenger Seat Console Box with Built-in Magazine Rack
- Color Rear Vision Monitor System with Side-view Cameras
- Side-view Cameras Activated by Turn Signals
- Contemporary Wrap Around Dash with Glare Reduction
- 12 V / 110 V Phone Jack Receptacle
- Power Solar / Privacy Windshield Shade
- CD Player & AM/FM Stereo
- 18" VIP Smart Steering Wheel
- Lighted Switches
- Computer Slide-out Tray in Dash with Lock-out Rails
- Fire Extinguisher
- Dual Dash Fans
- Beverage Tray

| AVAILABLE OPTIONS: | 36 QSP | 40 QXP | 43 QBP | 43 QGP | 43 QRP |
|--|--------|--------|--------|--------|--------|
| Handheld CB Radio | O | O | O | O | O |
| Satellite Radio (Requires Subscription) | O | O | O | O | O |
| In-dash Stereo / Navigational System | O | O | O | O | O |
| Rearview Mirror with Compass & Outside Temperature | O | O | O | O | O |

Living Area/Dinette

STANDARD EQUIPMENT ON ALL MODELS:

- Ultra Leather DE Sofa Bed on Passenger's Side
- Cloth DE Sofa Bed on Driver's Side
- 12 V Receptacle & Phone Jack at Dinette
- Full Ceramic Tile Floor
- Booth Dinette with Laminated Tabletop & Solid Surface Edging

| AVAILABLE OPTIONS: | 36 QSP | 40 QXP | 43 QBP | 43 QGP | 43 QRP |
|--|--------|--------|--------|--------|--------|
| Freestanding Dinette with Computer Workstation | O | O | O | O | O |
| Freestanding Dinette with Built-in Cabinets | O | O | O | O | O |
| Ultra Leather DE Sofa / Sleeper on Passenger's Side | S | S | NA | S | S |
| Cloth DE Sofa / Sleeper on Passenger's Side | O | O | NA | O | O |
| Ultra Leather Air Coil Hide-A-Bed Sofa on Passenger's Side | NA | O | O | O | O |
| Cloth Air Coil Hide-A-Bed Sofa on Passenger's Side | NA | O | O | O | O |
| Ultra Leather J Sofa / Sleeper on Passenger's Side | NA | NA | S | NA | NA |
| Ultra Leather DE Sofa / Sleeper on Driver's Side | O | O | O | O | O |
| Cloth DE Sofa / Sleeper on Driver's Side | O | O | O | O | O |
| Ultra Leather Air Coil Hide-A-Bed on Driver's Side | O | NA | NA | NA | NA |
| Cloth Air Coil Hide-A-Bed on Driver's Side | O | NA | NA | NA | NA |
| Ultra Leather Magic Bed on Driver's Side | O | O | O | O | O |
| Cloth Magic Bed on Driver's Side | O | O | O | O | O |
| Combo Sofa / Booth Dinette - Cloth | O | O | O | O | O |
| Combo Sofa / Booth Dinette - Ultra Leather | O | O | O | O | O |
| Leather Lift Recliners (2) on Driver's Side | O | O | O | O | O |

Kitchen

STANDARD EQUIPMENT ON ALL MODELS:

- Polished Solid Surface Countertops
- Solid Surface Sink & Stove Covers
- Expand-an-island
- 2½" Deep Lighted Toe Kick
- Single Lever Sink Faucet with Built-in Sprayer
- Residential Double Bowl Stainless Steel Sink
- Residential Stainless Steel Refrigerator with Icemaker (6 Batteries)
- Stainless Steel Convection Microwave with Exterior Venting
- 2-burner Glass Cooktop
- 12 V Fluorescent Light
- Galley Soap Dispenser
- Sink & Stove Cover Racks (Underneath the Sink)

AVAILABLE OPTIONS:

| | 36 QSP | 40 QXP | 43 QBP | 43 QGP | 43 QRP |
|---|--------|--------|--------|--------|--------|
| 3-burner Cooktop with Gas Oven (NA with Dishwasher) | O | O | O | O | O |
| Dishwasher (Drawer Type) | O | O | O | O | O |
| Gas / Electric Refrigerator (4 Batteries) | O | O | O | O | O |

Bath

STANDARD EQUIPMENT ON ALL MODELS:

- Medicine Cabinet with Vanity Lights
- Solid Surface Vanity Top & Bowl
- Cove Crown Molding
- Electric Flush Toilet
- Skylight in Shower with Sliding Solar Cover
- Fantastic 3-speed Fan (Water Closet Only)
- Vessel Sink Bowls in Rear Bath (43' Models Only)

AVAILABLE OPTIONS:

| | 36 QSP | 40 QXP | 43 QBP | 43 QGP | 43 QRP |
|---|--------|--------|--------|--------|--------|
| 41" Molded Fiberglass Shower | S | NA | NA | NA | NA |
| 36" Molded Fiberglass Shower with Radius Door | NA | S | S | S | S |

Bedroom

STANDARD EQUIPMENT ON ALL MODELS:

- Innerspring Queen Mattress (60" x 80")
- Bed Comforter with Throw Pillows
- Wood Headboard
- Solid Surface Nightstand Tops
- Wardrobe with Automatic Light
- Solar / Privacy Shades
- Pre-wired for DVD & Satellite Receiver
- Laundry Hamper
- 32" TV
- Ceiling Fan

AVAILABLE OPTIONS:

| | 36 QSP | 40 QXP | 43 QBP | 43 QGP | 43 QRP |
|--|--------|--------|--------|--------|--------|
| King Bed (72" x 80") | NA | O | O | O | O |
| Select Comforti™ Queen Mattress (60" x 80") | O | O | O | O | O |
| Select Comforti™ King Mattress (72" x 80") | NA | O | O | O | O |
| Memory Foam Queen Mattress (60" x 80") | O | O | O | O | O |
| Memory Foam King Mattress (72" x 80") | NA | O | O | O | O |
| Tile Flooring in Bedroom | NA | NA | O | O | NA |
| Security Safe | O | O | O | O | O |

General Interior

STANDARD EQUIPMENT ON ALL MODELS:

- 7' Ceilings
- Soft Touch Vinyl Ceilings
- Raised Panel Cabinet Doors
- Recessed Ceiling Lighting
- Adjustable Shelving in Some Cabinets
- Air Driven Step Well Cover
- Washer / Dryer Ready
- SeeLevel Tank Monitor
- Smoke Detector
- Central Vacuum Cleaner with VacPan
- Carbon Monoxide Detector
- Multiplex Lighting System
- Ceramic Tile Flooring in Kitchen, Bath, Entrance Landing & Living Room
- Complete Cable Wiring Interfacing with Surround Sound & Satellite Receiver
- Enclosed Surround Sound Speakers
- LPG Leak Detector
- Energy Management System
- Power Solar / Privacy Shades

AVAILABLE OPTIONS:

| | 36 QSP | 40 QXP | 43 QBP | 43 QGP | 43 QRP |
|--|--------|--------|--------|--------|--------|
| Combo Washer / Dryer with Overhead Storage Area | O | O | O | O | O |
| Stacked Washer / Dryer | O | O | O | O | O |
| 10-gallon DSI Gas/Electric Water Heater | S | S | NA | NA | NA |
| Two 30,000 BTU Ducted Furnaces | S | S | NA | NA | NA |
| All Electric Coach | O | O | O | O | O |
| Hydronic Heating System (Required on All Electric Coach) | O | O | S | S | S |
| Tankless Gas Water Heater (NA with All Electric Coach) | O | O | NA | NA | NA |
| 32" TV / Entertainment Center | S | S | NA | NA | NA |
| 37" TV / Entertainment Center | NA | NA | S | S | S |

All options may not be available in all models. Because of progressive improvements, specifications, standard & optional equipment are subject to change without notice or obligation.

INTERIOR SPECIFICATIONS



Cherry Wood



Natural Cherry



Glazed Cordovan



Glazed Cherry



Glazed Honey



White Chocolate (Bath)

AVAILABLE ONLY
WITH GLAZED CHERRY, GLAZED
HONEY, OR GLAZED CORDOVAN

| | BEDROOM MAIN & ACCENT | LIVING AREA SOFA & ACCENT | DINETTE | CARPET | TILE | COUNTERTOP |
|--|--------------------------|------------------------------|---------|--------|------|------------|
| Creme Brulée | | | | | | |
| Latte | | | | | | |
| Nocturne | | | | | | |
| Triple Crown FABRICS BY RALPH LAUREN | | | | | | |

AllLEGRO Bus cabinet doors are made of solid wood. Cabinet finishes are available in combination with any fabric scheme. Options may not be available for every model. Specifications and standard or optional equipment subject to change without notice or obligation.

BEDROOM SUITE FABRIC



Creme Brulée



Latte



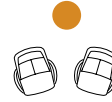
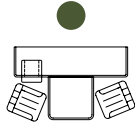
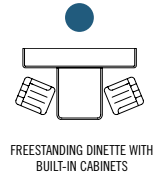
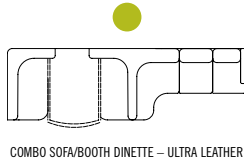
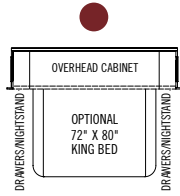
Nocturne



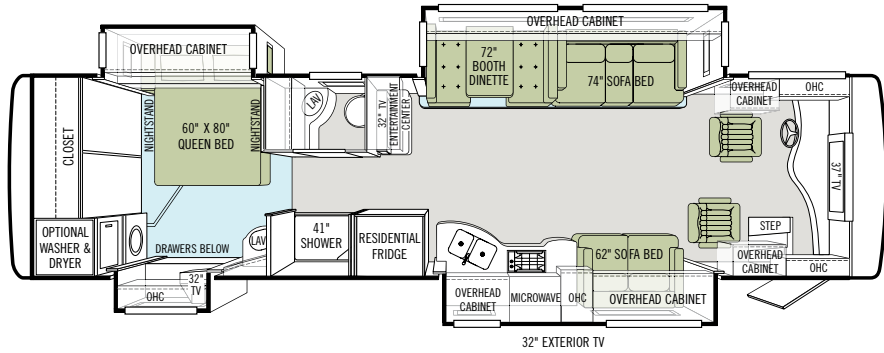
Triple Crown
FABRICS BY RALPH LAUREN

FLOOR PLANS

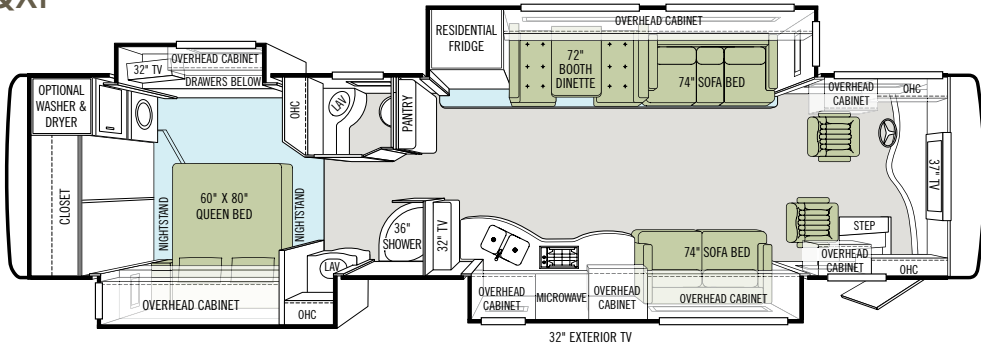
Option Key



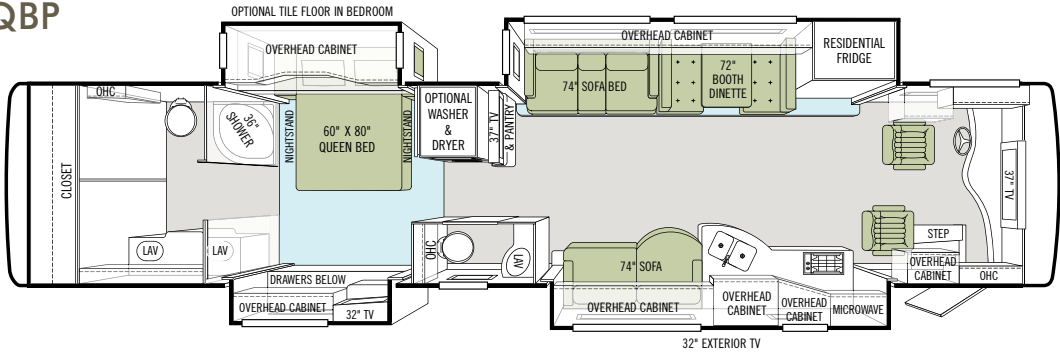
36 QSP



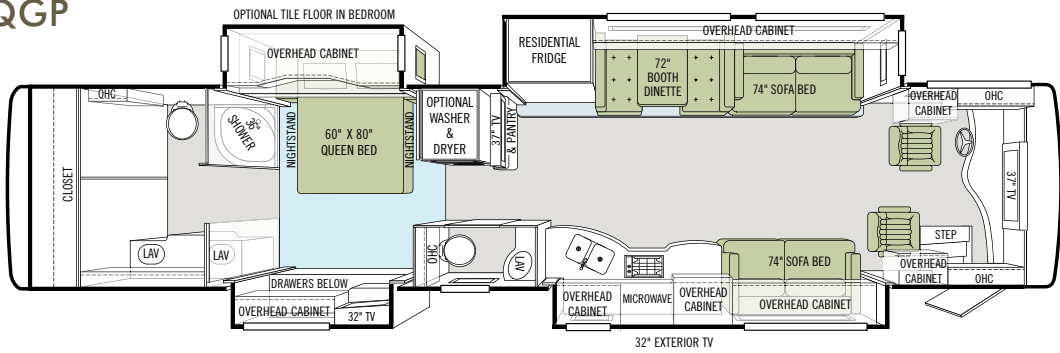
40 QXP



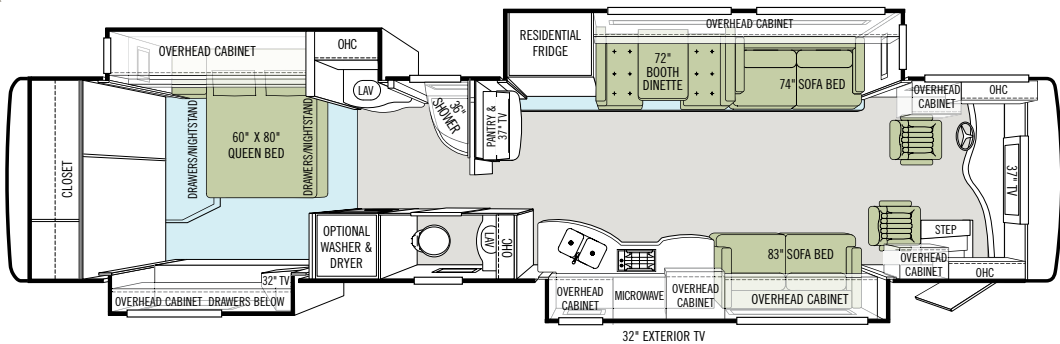
43 QBP



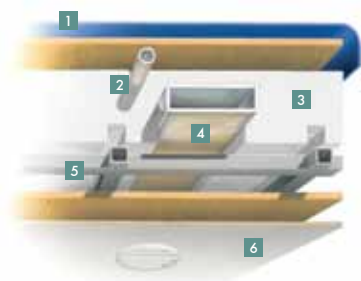
43 QGP



43 QRP

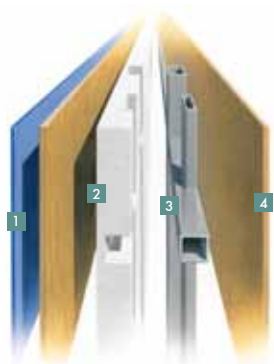


CONSTRUCTION SPECIFICATIONS



Roof

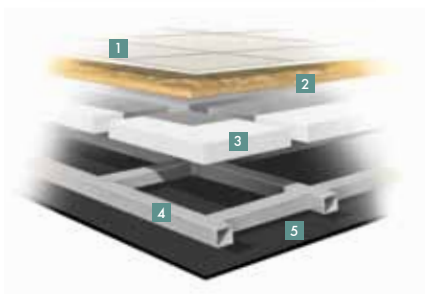
1. One-piece, moisture resistant molded fiberglass roof cap provides insulation and strength and prevents water intrusion
2. A/C Condensation Drainage System that runs internally through the roof insulation and down the sidewalls, redirecting water underneath the motor home
3. 5½" formed insulation
4. Quiet Air Cooling System with return air and foil-wrapped cooling exhaust ducts
5. Durable, tubular aluminum roof skeleton
6. Easy-to-clean soft touch vinyl ceiling panel



Sidewall

1. Gel-coat fiberglass outside wall panel
2. High-performance thermal insulation
3. Durable, yet lightweight, tubular aluminum wall skeleton
4. Decorative inside wall panel

All sidewalls are approximately 2" thick



Floor

1. Ceramic tile floor bonded to high-impact oriented strand board
2. High-level engineered oriented strand board
3. High-performance thermal insulation
4. Durable, tubular floor skeleton
5. Woven moisture barrier material

10-YEAR LIMITED UNITIZED CONSTRUCTION WARRANTY The structural integrity of the entire coach is guaranteed for the next 10 years. Warranty includes wall separation and inner frame weakness.

5-YEAR LIMITED LAMINATION WARRANTY We guarantee against all exterior fiberglass delamination or wall separation.



TIFFIN MOTORHOMES

WHEREVER YOU GO, WE GO.

105 2ND STREET NW RED BAY, AL 35582 CALL 256.356.8661 FAX 256.356.8219
FOR PARTS AND SERVICE CALL 256.356.0261

Phaeton®, Allegro®, Allegro Breeze®, Allegro RED®, Allegro Bus®, Zephyr®, Roughing It Smoothly®, Open Road® and Pusher® are registered trademarks of Tiffin Motorhomes. For more specifics on what makes a Tiffin Motorhome, go to tiffinmotorhomes.com