

# Free Spirit



**Leisure**  
Travel Vans Ltd.



**Page 1 - Experience a Leisure Travel Van**

**Page 2 - Daimler Chrysler Chassis**

**Page 3 - Free Spirit Tour**

**Page 4 - Floorplans**

**Page 5- Color Combinations**

**Page 6- Free Spirit LSS**

**Page 7- Specifications**

**Page 8- Available Features**

**Page 9 - LTV Family**

# Never Compromising Comfort, Space, Quality & Safety

Leisure Travel Vans is the industry leader in quality and innovations as a manufacturer of Class B Motorhomes for the past 27 years. Our products have earned and sustained a reputation for being the most dependable and the highest in quality and workmanship and we continue to incorporate the newest technologies and composite with full consideration for the environment.

## Leisure Travel Van's Reputation

LTV is a company steeped in tradition of building the highest quality, best performing motorhomes on the market. Our Corporate philosophy is not to be the biggest, but the best! Keeping in mind the goal of supplying superior products that offer excellent values to dealers and in turn the consumers. This means providing high quality products, that retain their value, with the features that people dream of. We believe that the Sprinter chassis will be the standard by which most

Class B will be compared, leading the industry in residual value.

Leisure Travel Vans Research and Development department is dedicated to maintaining our reputation as the leader in quality and innovation for the Class "B" and "B+" products, now and in the future. We feel this approach will insure success in our plan to achieve continued growth and expansion through the addition of quality dealers in select markets.



## Give yourself the opportunity to experience a Leisure Travel Vans today.

The Free Spirit is your well-deserved reward. You have earned the right to discover what superior driving pleasure is all about. This vehicle balances form with function. The Free Spirit is based on the Daimler Chrysler Sprinter van powered by a Mercedes Benz Diesel engine and innovatively designed by the skilled engineers at Leisure Travel Vans and Daimler Chrysler.





# Sprinter 2500



## Mercedes Benz Power

The Free Spirit is built on the German engineered DaimlerChrysler Sprinter 2500 super high roof van. It is powered by an amazingly quiet Mercedes Benz engine, featuring the latest generation common rail direct injection (CDI) system. The 2.7 litre, 5 cylinder power house produces 154 hp at 3800 rpm - making it feel more like a V8, while offering a noteworthy fuel efficient 22 mpg plus with a 500 mile range.

Service intervals are recommended at every 10,000 miles with maintenance at every 20,000 miles during the estimated one half million mile plus engine life.

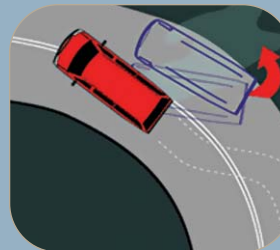
## Safety

The Dodge Sprinter features four-wheel antilock disc brakes for improved steering control under extreme braking and/or slippery conditions.

Other safety features include:

- Driver and front-passenger air bags
- Driver and front-passenger seat belts with pretensioners
- Acceleration skid control (ASR) advanced traction control system
- Electronic brake distribution
- Three-point seat belts for all passengers
- Electronic stability program (ESP), reduces the chance of skidding while helping the driver handle critical situations more effectively
- Available remote-powered central locking system to ensure security for your vehicle and almost as important-whatever is locked within it

The Free Spirit has endured various safety tests to ensure that the driver and passengers travelling in the vehicle can feel secure. The most recent accomplishment was the pull test of the front swivel seats and the 3rd (lounge) seat. These items surpassed the FMVSS standards.



# Free Spirit Tour

## Storage

The abundance of storage space in the Free Spirit consists of a large wardrobe closet, deep overhead cabinets, kitchen cupboards, tip out tray, cutlery drawer, pull out pantry, side and rear door pockets, optional basement storage, storage space underneath the dinettes and optional sofa.

## Spacious Kitchen

The kitchen area is equipped with ample counter space with a flip up extension, recessed glass-top 2 burner stove and rounded sink, microwave and 4 cubic foot refrigerator (raised for easy access), 5 cup coffee maker, spice rack and paper towel holder, fantastic fan exhaust system.

## Private Bathroom

The enclosed wetbath holds a hand-held shower, flip up sink, Thetford toilet, medicine cabinet, flip up table, 110-volt plug, and a bathroom fan.

## Sleeping/Living Area

Located in the rear of the coach is the sleeping area. This placement is ideal for having to avoid crawling over the bed to get to the bathroom.

Two choices of sleeping arrangements:

1. Dinette by day and the choice of 2 single beds or one 68" x 75" bed by night.
2. Power sofa with two 3 point seat belts and a center lap belt. With the push of a button, the sofa converts to a double bed or a 68" x 75" bed with the use of the 2 ottomans.

## 3S Sleeping Area

The 210B 3S floorplan consists of a lounge seat with a 3 point seat belt, located behind the front passenger seat. The front seat swivels combines with the lounge seat to make a single 23" x 71" bed. The front table package is available for the ability to dine at the front of the coach, or for sitting around socializing while the beds remain made up in the rear.

## Behind the Wheel

The cab portion of the Free Spirit has been customized for added convenience and comfort while driving. The adjustable factory seats are recovered in color coordinated high quality fabric and filled with a dual density softer seating foam. Front carpeted floor mats and an optional wood dash with panel inserts take away the "commercial vehicle" look.

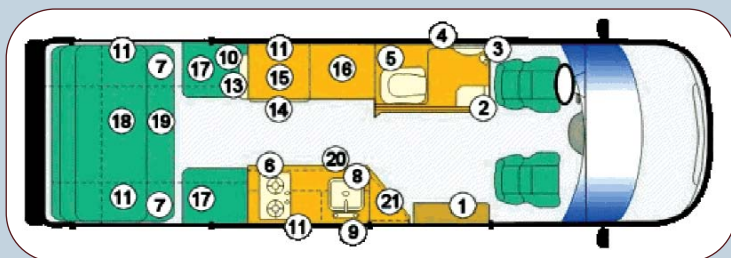
# Free Spirit Floorplans

**Free Spirit 210B** is the most popular floorplan. It is equipped with the kitchen on the passenger side of the unit with the corner cabinet included in the kitchen setup.

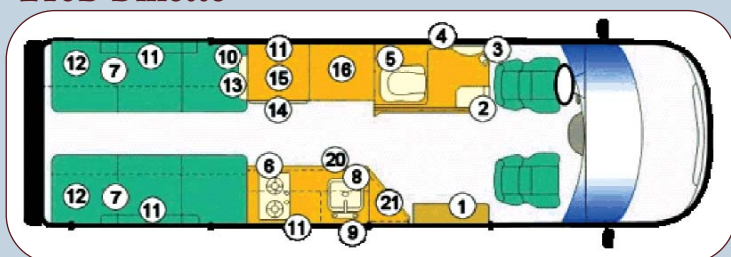
**Free Spirit 210B 3S** is equipped with same setup as the 210B model but has the addition of a 3rd seat (with seatbelt) in lieu of the corner cabinet.

The long dinettes (2 single beds) are standard where the optional electric sofa is available instead of the long dinettes. Both setups make into a 68" x 75" bed. This applies to the 210B and the 210B 3S.

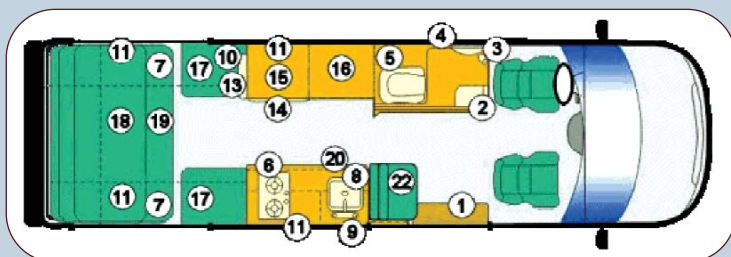
## 210B Sofa



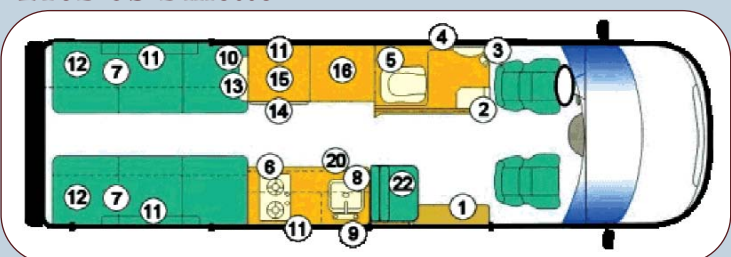
## 210B Dinette



## 210B 3S Sofa



## 210B 3S Dinette



1. Entrance
2. Flip-up table
3. Flip-up Sink
4. Shower Head
5. Toilet
6. Stove
7. Storage above
8. Sink
9. Coffee Maker
- 10./13. Television
11. Storage Above
12. Long Dinette
14. Fridge
15. Microwave Above
16. Wardrobe Closet and storage below
17. Short Dinette
18. Sofa in normal position
19. Sofa in bed position
20. Pantry below
21. Corner cabinet storage
22. 3rd seat - makes into single bed with the passenger seat



# Color Combinations



## Cabinetry



Desert sand



Garnet



Champagne



Shadow Grey

## Flooring



Fern Green

# Free Spirit LSS



Each year Leisure Travel Vans produces a limited amount of Free Spirit's on a silver chassis, named the Free Spirit LSS. These motorhomes have all the same great features of the regular Free Spirit 210B & 210B3S, with the addition of a few special features, which include: Standard Cherry, Maple or Honey Birch cabinets, a Fantastic Fan with rain sensor, silver colored chassis, specially designed decal package, silver colored optional awning, and Shadow Grey or Garnet color choices. New for 2006, LTV is offering the option of having your LSS upgraded with painted graphics instead of decals (as shown in orange and blue). See your local dealer for more information.

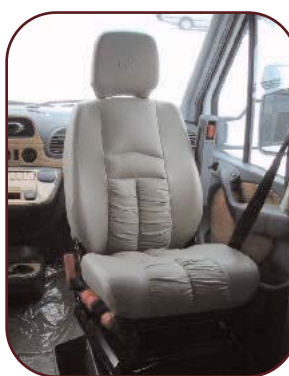




# Specifications

Cargo Carry Capacity (CCC based on 2 people)	1541 lbs.
Gross Vehicle Weight (GVWR)	8550 lbs.
Unloaded Vehicle Weight (UVW)	6446 lbs.
Towing Capacity	5000 lbs.
Tongue Weight	500 lbs.
Fresh Water Tank	26 US Gal. 99 Litres
Grey Water Tank	21 US Gal. 79 Litres
Black Water Tank	9.8 US Gal. 37.1 Litres
Hot Water Tank (LP/110)	6 US Gal. 22.7 Litres
Propane Tank	11.5 US Gal. 39 lbs.
Height (interior)	73" (6'1")
Height (exterior with A/C)	114" (9'6")
Height (exterior with out A/C)	104" (8'8")
Height (exterior with low profile A/C)	110" (9'2")
Length (exterior)	264" (22')
Width (interior at floor)	68" (5'6")
Width (exterior)	83.5" (6'11.5")
Wheelbase	159"

<b>Engine</b>	MBE 2.7 litre turbo, 5 cylinder Diesel
<b>Transmission</b>	MBE 5-speed Auto with Overdrive
<b>Horse Power</b>	154 @ 3800 rpm
<b>Torque</b>	243 ft.lbs @ 1600 - 2400 rpm
<b>Max. Speed</b>	86 mph
<b>Steering</b>	Rack and Pinion
<b>Brakes</b>	4-wheel disc with ABS
<b>Air Bags</b>	Front Driver and Passenger
<b>Fuel Tank</b>	26.4 gallons (US) 100 Litres



## Options (All Models)

- > Electric rear sofa
- > "Ultraleather" seating
- > Flexsteel Ultraleather/swivel/power seats
- > Swivel Seats
- > Front table package
- > Maple/Honey Birch/Cherry cabinetry
- > Rear door screen
- > Front windows screens
- > Grill screen
- > LCD TV and DVD player
- > Rear view mirror w/compass & temp.
- > Wood dash and panel inserts
- > Back up camera with monitor
- > Satellite Radio
- > Bug deflector
- > Basement storage with tire carrier
- > Awning
- > Painted side and rear windows
- > Low profile air conditioner
- > Roof air conditioning with heat strip
- > Generator
- > Trailer wiring
- > Dual Control Firestone Ride Rite Air Suspension
- > Maintenance Free AGM 2nd Coach battery
- > Microwave/convection oven
- > Inner spare tire cover
- > European privacy shades

Rearview Mirror



Ultraleather Sofa



Awning



Tire Cover/Inner Tire Cover



Wood Dash



Bug Deflector



Basement Storage



microwave/convection oven



# Available Features

## Standard Features (All Models)

- > Outside shower
- > Class 3 certified trailer hitch with step bumper
- > Pre-connected 18' sewer hose with hassle free dump system
- > Urethane and Silent Ride Undercoat
- > Convex and heated mirrors
- > Ground effects and decal package
- > Alloy wheels
- > Hot water heater (110 volt & LP)
- > Flush-mounted day/night shades with valances
- > Removable front floor mats
- > Large bathroom with double doors
- > Toilet and handheld shower
- > Flip up sink and table
- > Winterization water pump tee
- > Maintenance Free AGM Coach battery
- > Large wardrobe closet
- > Spice rack with paper towel holder
- > Microwave and Coffee Maker
- > Slide out pantry
- > Recessed state of the art glass stove and rounded sink
- > Garbage bag holder
- > Fantastic Fan with temperature control
- > Locking table pedestals with sliding table
- > Under cabinet halogen lighting
- > Solid wood doors and corners
- > 16,000 BTU furnace
- > Rear single beds - convert into one large bed (68" x 75")
- > Propane tee

Corner Cabinet



Pullout Pantry



Furnace &  
A/C Control



Interior Stove



Exterior Shower



Command Centre



Step Bumper with Hitch



4 cu.ft Fridge



Kitchen Sink



Bathroom



Hassle Free Dump System



Hose for Dump System





# LTV Family



Leisure Travel Vans takes pride in maintaining the high level of quality and finish that we are known for. Components are developed and fabricated on-site in beautiful Morden, Manitoba Canada, approximately 130 miles North of Grand Forks, N.D. Leisure Travel Vans equips the vehicles with quality cabinetry built in our own woodshop, and with specially designed interior and exterior trim formed in the plastics department. Factory seat covers are replaced by Leisure Travel Vans' experienced sewing department using long lasting up-to-date fabrics, and an in house paint shop applies the automotive paint on specific areas of each unit. To reduce road noise and protect from the harsh elements, a stone guard and sound deadening insulation, along with a special urethane is used to coat the undercarriage of the van.

## Family Ties

Over the past 27 years, LTV has forged an important family connection with our many owners. Once a year we organize an Owner's Rally, which is a fun way for owners to meet and learn more about the travel possibilities of a Leisure Travel Van. LTV also assists the 15 regional owners chapters with their own area rallies. The various rallies are a great way to maintain valuable relationships with LTV family members.





# Peace of Mind

Leisure Travel Vans is committed to providing you with uncompromising value for your investment.

## Warranty Protection

### LTV Warranty

3 years or 36,000 miles/60,000 km

### Appliances

Covered by the individual warranties offered by their respective manufacturer.

### Chrysler Warranty

Chassis — 3 years/36,000 miles/60,000 km

For full chassis warranty, you must contact your local authorized sprinter dealer.



**Leisure**  
Travel Vans Ltd.

\*Product improvement is a continuing process at Leisure Travel Vans (1999) Ltd. Thus we reserve the right to change the specifications on any and all products without prior notice; errors and omissions expected. Leisure Travel Vans (1999) Ltd. is under no obligation to undertake modifications to units manufactured prior to changes in specifications. Units shown with optional equipment.

Visit [www.leisurevans.com](http://www.leisurevans.com)  
or call 877-288-8088

#### Corporate Office

Box 1208, Hwy 3 East  
Morden, Manitoba  
R6M 1B1 • Canada  
Phone: 204-822-3009  
Fax: 204-822-5505

#### US Address (mailing only)

Box 68  
Walhalla, North Dakota  
58282 • United States

Colton RV  
3122 Niagara Falls Blvd  
North Tonawanda, NY 14120  
(716) 694-0188  
[www.ColtonRV.com](http://www.ColtonRV.com)

Colton RV  
3443 Southwestern Blvd.  
Orchard Park, NY 14127  
(716) 957-3250  
[www.Coltonrv.com](http://www.Coltonrv.com)

dealer stamp