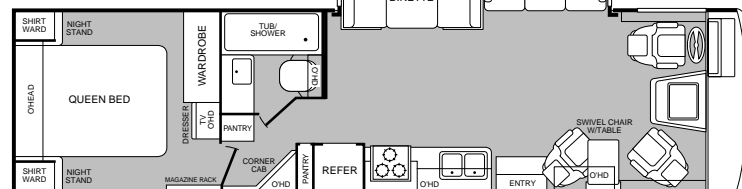
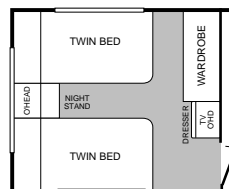
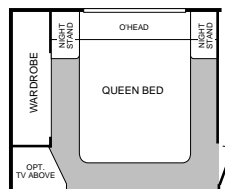
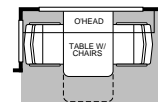
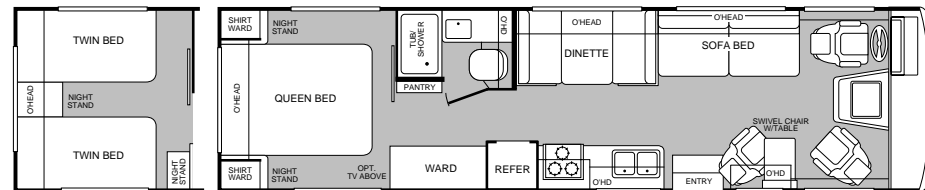
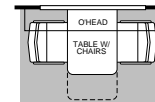
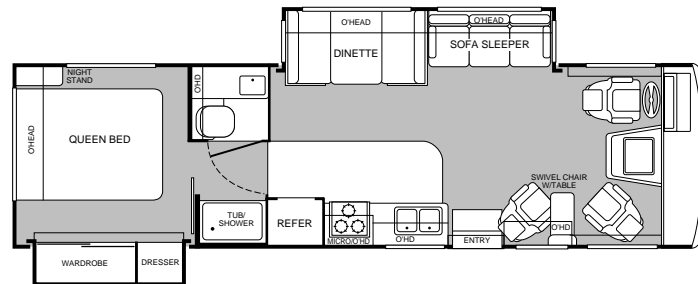
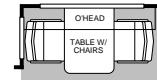
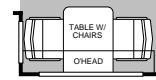
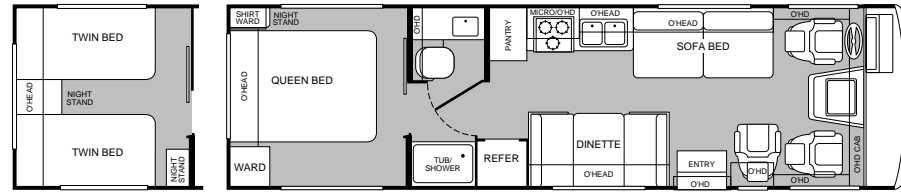


**The motor home that shows
a little work can go a long way.**

Pound for pound, Boulder is one hard-working motor home that runs long on both function and family fun. Just have a seat in the motor home that revolutionized the industry and began a multitude of imitators and you'll see why Boulder also has the lock on brand loyalty with the most avid RV adventure club in the country. Boulder's spacious floor plans make it the perfect place to host friendly after adventure get-togethers. The Flex-O-Later® dinette system allows for easy adjustments and ample storage space for supplies below, and sturdy mortise and tenon oak cabinetry stands up to any hard knocks. A 3500 lb. Workhorse, 5000 lb. Ford towing capability makes bringing toys like jet skis, motorcycles, or personal watercraft effortless. And brand-name appliances, stylish furnishings, and our optional E-Z Glide™ Room Slide-out System make sure the only "roughing it" you do is on the outside of your Boulder in the wide open spaces.

2000 Bounder Floor Plans



NEW FOR
2000

MODEL 31M

- Dinette or Optional Table with Chairs
- Lounge Chair
- Large Pantry
- Optional Twin Beds
- Tub/Shower

NEW FOR
2000

MODEL 31W

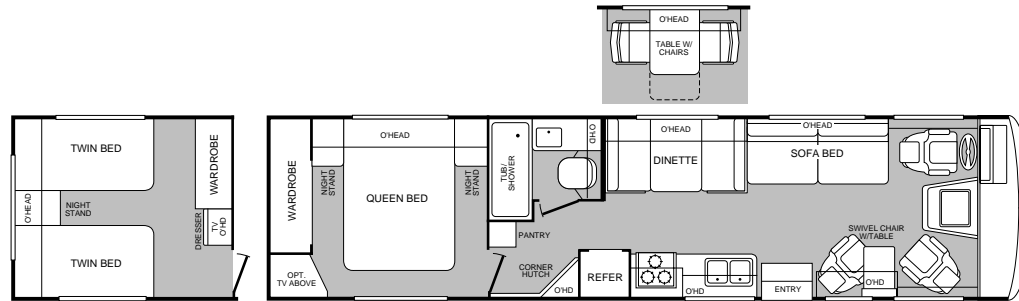
- Dinette or Optional Table with Chairs
- Swivel Chair with Table
- Wardrobe/Dresser Slide-Out
- Fully Enclosed Bathroom

MODEL 32H

- Dinette or Optional Table with Chairs
- Swivel Chair with Table
- Large Wardrobe
- Optional Twin Beds
- Fully Enclosed Bathroom

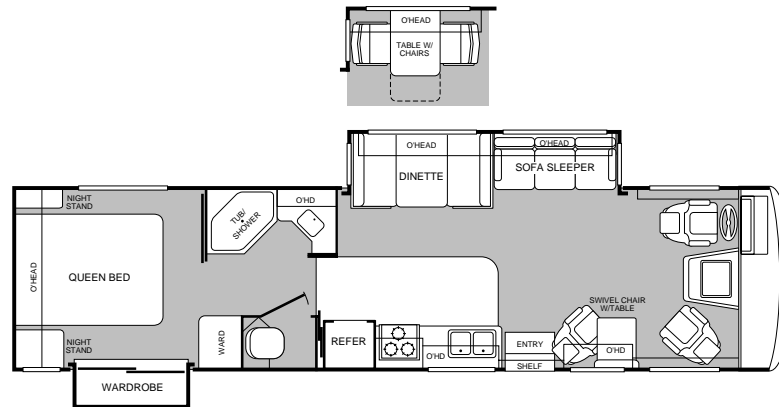
MODEL 34D

- Dinette or Optional Table with Chairs
- Living Room Slide-Out
- Swivel Chair with Table
- Optional Dometic® Side-by-Side Refrigerator
- 3 Bedroom Configurations
- Fully Enclosed Bathroom
- Extra Large Tub/Shower



MODEL 34J

- Swivel Chair with Table
- Optional Table with Chairs
- Island Queen Bed
- Optional Twin Beds
- Fully Enclosed Bathroom
- Extra Large Tub/Shower



NEW FOR
2000

MODEL 34T

- Optional Table with Chairs
- Living Room Slide-Out
- Swivel Chair with Table
- Private Toilet
- Wardrobe Slide-Out



MODEL 36S

- Optional Table with Chairs
- Living Room Slide-Out
- Swivel Chair with Table
- Optional Dometic® Side-By-Side Refrigerator
- Optional Washer/Dryer
- 3 Bedroom Configurations
- Private Toilet

2000 Bounder Standard Features

EXTERIOR AUTOMOTIVE

Large, Curved Aerodynamic Windshield
Undercoating
Stainless-Steel Wheel Simulators
Underhood Utility Light
Steel Surface on Bulkhead
Trailer Hitch with 4-Point Electrical Hook-Up
Large Single Headlamps with Turn Signal
Rear Camera Ready
Windshield Wipers with Wet Arm

Vacubond Lower/Upper Floor
Vacubond Walls with Smooth Exterior Fiberglass
Radiused Roof with Ducted A/C
Rubber Roof
Steel Floor/Wall/Ceiling Framing
Power Platform II

INTERIOR

3 Interior Decors
Skylight In Tub/Shower
Wall-to-Wall Nylon Carpet with Carpet Pad
Vinyl Floor Covering (Galley & Bathroom)
Wood Drawers
Roller Guide Drawer Slides with Transit Ship Locks
Radius Corner Cabinetry
Brass Finished Cabinet Hardware
Driver/Passenger Reclining Bucket Seats
Mini Blinds (Vinyl)—Entry
Mini Blinds (Wood)
Bedspread with Decor Pillows
Innerspring Mattress
Oak Cabinet Doors & Drawers
Window Coverings
Oak Bath Door Trims
Trash Basket in Galley
Molded Fiberglass Tub/Shower with
One-Piece Enclosure
Residential Seat Styling
Entry Rail (Oak & Brass)
Raised Panel, Overhead Cabinet Doors
Oak Flat Panel, Base Cabinet Doors
Adjustable Cabinet Shelves (Selected Cabinets)
Sink Cutting Board
Solid Divider Doors
Large, Double Stainless-Steel Sink
Oak Wood Grain

INTERIOR AUTOMOTIVE

Intermittent Wiper Control
Double Swivel Sun Visors with Map Pockets
Engine Cover Convenience Tray
Cruise Control
Low Profile Engine Cover
Radio with Cassette AM/FM/MX—Electronic Tuning
Battery Disconnect System
Auto A/C Heater Combo
Radio Switch—Main/Auxiliary
Soft Surface Automotive Dash
Tilt Steering Wheel
Tilt-Up Instrument Panel
Driver/Passenger Captain's Chairs
with Reclining Back/Slide Controls
3-Point Seat Belts on Driver/Passenger Seats

EXTERIOR

Full Fiberglass Front Cap
One-Piece, Swing-Down Engine Access Door
Roto Cast, Front Quarter Panels
Roto Cast, Rear Wheel Well Trims
Aerodynamic Bus Styling
Entry Door with Deadbolt Latch
Slider Windows Throughout
Aluminum/Painted Front Grille
Bounder Logo Badging
Utility Compartment with Exterior Shower
Roof Ladder
Exterior Assist Handle
Remote Rear View Mirror
20' Sewer Hose
Park Cable Receptacle
Awning Rail/Drip Molding (Both Sides)
Power Entry Step
Dual Battery Charge Control
Under-Floor Spare Tire
Porch Light
3 Colorway Graphics to Match Decor
Lower Body Accent Paint

EXTERIOR STORAGE

Insulated Luggage Doors
Single Paddle/Metal Latches
Continuous One-Piece Bulb Seal
Hidden, Stainless-Steel Latch Rods
Lighted Compartments
Steel Seal Frames
Carpeted Luggage Compartment
Pass-Through Storage

INTERIOR LIGHTING

Wardrobe Lighting
Fluorescent Ceiling Lighting with Dual Bulb
Decor Lighting
Incandescent Lighting

APPLIANCES

20" Panasonic® TV In Front Overhead
Smoke Detector
LP Detector
CO Detector
6-Gallon, Quick Recovery Water Heater with D.S.I.
22" 3-Burner, High-Output Cook Top with Oven
Light/Power Range Hood with Spice Rack
Folding Range Cover
Single A/C High Efficiency with Solar Panel
Water Heater Bypass
Marine Toilet with Water Saver
Toilet Tank "Sani-flush" System
1-cu.ft. Microwave
8-cu.ft. Dometic® Double Door Refrigerator
Single-Lever Galley Faucet
Water Filter with Faucet
Demand Water Pump with Filter
Power Bath Vent
Fantastic® Power Roof Vent in Galley
Fire Extinguisher
Telephone Jack
Rear Speakers In Bedroom
A/C Ready
Monitor Panel

ELECTRICAL

Patio Receptacle
120V/12V AC/DC Converter Central Electrical Panel
120V/12V Wire Raceway
3-Way Water Pump Switching
4.0kW Onan® Generator
30-amp Service
Wall Switches
Dual 6V/Deep-Cycle 218-amp House Battery
VCR Ready

Product information and photography included in this brochure were as accurate as possible at the time of publication. For the most current product information and changes, please visit our Website at www.fleetwood.com or contact your local Fleetwood dealer. Subsequent refinements may be evident in the actual product. Prices and specifications are subject to change without notice. All fuel and liquid capacities are approximate and dimensions are nominal. Fleetwood has designed its motor home brands to provide a variety of potential uses for its customers. Each unit features the optimum storage, fluid, seating and sleeping capabilities. Though the customer enjoys this potential, he/she also has the responsibility to select the proper combinations of loads without exceeding the chassis weight capacities.

New Bounder Features For 2000

Our engineering may set us apart from the rest. But the things you'll notice most when you and your family take a trip are the top-of-the-line features. This year we have, once again, added to an already large list of features with the following:

- **CB Radio Ready Option**
- **New Easy-to-Clean Entry Treads**
- **Illuminated Porch Light Switch**
- **High Line Utility Compartment**
- **Toilet Tank "Sani-flush" System**
- **Optional Stacked Compact Disc Player**

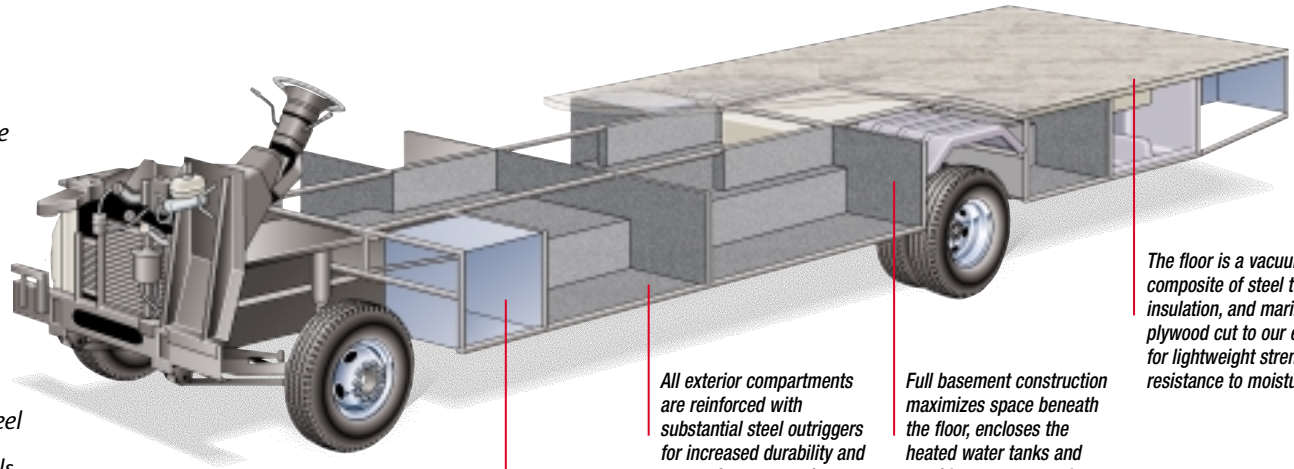
NEW FOR
2000NEW FOR
2000NEW FOR
2000

2000 Bounder Options

EXTERIOR AUTOMOTIVE	31M	31W	32H	34D	34J	34T	36S
Workhorse Chassis 7.4L Vortec Engine	Opt	N/A	Opt	Opt	Opt	N/A	Opt
Ford Chassis 6.8L Engine	Opt	Opt	Opt	Opt	Opt	Opt	Opt
Rear Vision Camera	Opt	Opt	Opt	Opt	Opt	Opt	Opt
EXTERIOR	31M	31W	32H	34D	34J	34T	36S
Awning—USA	Opt	Opt	Opt	Opt	Opt	Opt	Opt
4-Point Manual Hydraulic Leveler—Workhorse	Opt	N/A	N/A	N/A	Opt	N/A	Std
4-Point Manual Hydraulic Leveler—Ford	Opt	Std	Opt	Std	Opt	Std	Std
INTERIOR AUTOMOTIVE	31M	31W	32H	34D	34J	34T	36S
Dash Fans	Opt	Opt	Opt	Opt	Opt	Opt	Opt
CB Radio Ready	Opt	Opt	Opt	Opt	Opt	Opt	Opt
Stereo AM/FM CD Player	Opt	Opt	Opt	Opt	Opt	Opt	Opt
AM/FM Cassette with Stack CD Player	Opt	Opt	Opt	Opt	Opt	Opt	Opt
INTERIOR	31M	31W	32H	34D	34J	34T	36S
Glass Shower Door with Bright Brass Frame	N/A	N/A	N/A	N/A	N/A	Std	Std
Headboard	N/A	N/A	N/A	Std	N/A	Std	Std
Rear Panasonic® Television with Island Queen Bed	N/A	N/A	N/A	Opt	Opt	N/A	Opt
Rear Panasonic® Television with Remote	Opt	Opt	Opt	Opt	Opt	Opt	Opt
CSA Sofa Lock	Std	Std	Std	Std	Std	Std	Std
Lounge Recliner	N/A	Opt	Opt	Opt	Opt	Opt	Opt
Coffee Table	N/A	N/A	N/A	Opt	N/A	Opt	Opt
Dinette Table w/Free Standing Extension & Chairs	Opt	Opt	Opt	Opt	Opt	Opt	Opt
Shower Curtain	N/A	N/A	Std	Std	Std	N/A	N/A
SLEEPING ACCOMMODATIONS (STANDARD)	31M	31W	32H	34D	34J	34T	36S
Sofa Bed	46"x 76"	N/A	46"x 76"	N/A	46"x 76"	N/A	46"x 76"
Sofa Sleeper	N/A	51 1/2" x 71 1/2"	N/A	51 1/2" x 71 1/2"	N/A	51 1/2" x 71 1/2"	N/A
Dinette	42"x 74"	42"x 74"	42"x 74"	42"x 74"	42"x 74"	42"x 74"	42"x 74"
Queen Bed	60"x 80"	60"x 80"	60"x 80"	60"x 75"	60"x 80"	60"x 80"	60"x 80"
SLEEPING ACCOMMODATIONS (OPTIONAL)	31M	31W	32H	34D	34J	34T	36S
Sofa Sleeper	N/A	N/A	N/A	N/A	N/A	N/A	Opt
Island Bed with Full Wardrobe	N/A	N/A	N/A	Opt	Std	N/A	Opt
Twin Beds with Nightstand	39"x 75"	N/A	39"x 75"	39"x 75"	39"x 75"	N/A	39"x 75"
SLIDE-OUT	31M	31W	32H	34D	34J	34T	36S
Living Room—Dinette Table & Chairs/Sofa	N/A	N/A	N/A	Opt	N/A	Opt	Opt
Living Room—Dinette/Sofa	N/A	Std	N/A	Std	N/A	Std	Std
Bedroom Wardrobe—Closet/Organizer	N/A	Std	N/A	N/A	N/A	Std	N/A
ELECTRICAL	31M	31W	32H	34D	34J	34T	36S
7.0kW Onan® Generator	Opt	Opt	Opt	Opt	Opt	Opt	Opt
5.0kW Onan® Generator	Opt	Opt	Opt	Opt	Opt	Opt	Opt
ECC Climate Control	Opt	Opt	Opt	Opt	Opt	Opt	Opt
ECC w/13.5/11M A/C w/5.0kW Generator Upgrade	Opt	Opt	Opt	Opt	Opt	Opt	Opt
ECC w/13.5/11M A/C w/7.0kW Generator Upgrade	Opt	Opt	Opt	Opt	Opt	Opt	Opt
5.0kW Generator—Onan® Dual A/C Ready Upgrade	Opt	Opt	Opt	Opt	Opt	Opt	Opt
7.0kW Generator—Onan® Dual A/C Ready Upgrade	Opt	Opt	Opt	Opt	Opt	Opt	Opt
CSA 5.0kW Gen—Onan®/DL A/C Ready Upgrade	Opt	Opt	Opt	Opt	Opt	Opt	Opt
CSA 7.0kW Gen—Onan®/DL A/C Ready Upgrade	Opt	Opt	Opt	Opt	Opt	Opt	Opt
CSA ECC w/Dual A/C 5.0kW Generator Upgrade	Opt	Opt	Opt	Opt	Opt	Opt	Opt
CSA ECC w/Dual A/C 7.0kW Generator Upgrade	Opt	Opt	Opt	Opt	Opt	Opt	Opt
CSA Package—Workhorse	Opt	N/A	N/A	Opt	Opt	N/A	Opt
CSA Package—Ford	Opt	Opt	Opt	Opt	Opt	Opt	Opt
APPLIANCES	31M	31W	32H	34D	34J	34T	36S
Furnace 20M BTU/35M BTU (Dual)	N/A	N/A	N/A	N/A	N/A	N/A	Std
Furnace 34M BTU	Std	Std	N/A	N/A	N/A	N/A	N/A
Furnace 35M BTU	N/A	N/A	Std	N/A	N/A	N/A	N/A
Furnace 42M BTU	N/A	N/A	N/A	Std	Std	Std	N/A
Dual Roof A/C High Efficiency BTU with Solar Panel	Opt	Opt	Opt	Opt	Opt	Opt	Opt
Convection Microwave	Opt	Opt	Opt	Opt	Opt	Opt	Opt
VCR/VHS	Opt	Opt	Opt	Opt	Opt	Opt	Opt
Washer/Dryer	N/A	N/A	N/A	N/A	N/A	N/A	Opt
Side-By-Side Refrigerator with Ice Maker	N/A	N/A	N/A	Opt	N/A	N/A	Opt
Dual A/C 13.5M BTU with Solar Battery Charger	Opt	Opt	Opt	Opt	Opt	Opt	Opt
CSA Convection Microwave	Opt	Opt	Opt	Opt	Opt	Opt	Opt
DSS Manual Lift/Satellite Dish	Opt	Opt	Opt	Opt	Opt	Opt	Opt

The Power Platform II Makes The Difference

Bounder's quality begins long before the features come on board. We begin by building on our exclusive Power Platform II, a unique truss design welded together using tubular steel that's durable, strong, and dependable. The result is a quiet and nearly flawless ride, increased floor strength, and substantially more storage space below. An all-steel foundation further reduces stress loads on the sidewalls and minimizes chassis flex on uneven roads.



Drawing is for illustrative purpose only to highlight aspects of motor home construction. Actual motor home design depends on model and is subject to change.

Easy access compartments let you get to Bounder's batteries and dual-battery charge control.

All exterior compartments are reinforced with substantial steel outriggers for increased durability and years of cargo carrying.




Full basement construction maximizes space beneath the floor, encloses the heated water tanks and provides easy-to-reach pass-through storage.

The floor is a vacuum-bonded composite of steel tubing, foam insulation, and marine-grade plywood cut to our exact specs for lightweight strength and resistance to moisture.

2000 Bounder Specifications

	<div>NEW FOR 2000</div>	<div>NEW FOR 2000</div>				<div>NEW FOR 2000</div>	
FORD CHASSIS	31M	31W	32H	34D	34J	34T	36S
Engine CID	415	415	415	415	415	415	415
Wheel Base	190"	208"	208"	208"	208"/247"	208"	228"
GVWR lbs/kgs (1)	18,000/8,163	20,500/9,299	20,500/9,299	20,500/9,299	20,500/9,299	20,500/9,299	20,500/9,299
Front GAWR lbs/kgs (2)	7,000/3,175	7,000/3,175	7,000/3,175	7,000/3,175	7,000/3,175	7,000/3,175	7,000/3,175
Rear GAWR lbs/kgs (2)	11,000/4,989	13,500/6,123	13,500/6,123	13,500/6,123	14,500/6,577	13,500/6,123	13,500/6,123
Base Weight lbs/kgs (3)	13,900/6,304	15,540/7,048	14,360/6,514	15,651/7,099	15,540/7,048	16,150/7,328	16,160/7,329
GCWR lbs/kgs (4)	23,000/10,431	25,500/11,565	25,500/11,565	25,500/11,565	25,500/11,565	25,500/11,565	25,500/11,565
Hitch Rating/Tongue Weight lbs	5,000/500	5,000/500	5,000/500	5,000/500	5,000/500	5,000/500	5,000/500
Hitch Rating/Tongue Weight kgs	2,268/227	2,268/227	2,268/227	2,268/227	2,268/227	2,268/227	2,268/227
Fuel Capacity gal/lbs	75/450	75/450	75/450	75/450	75/450	75/450	75/450
Fuel Capacity gal/kgs	75/204	75/204	75/204	75/204	75/204	75/204	75/204

	31M	31W	32H	34D	34J	34T	36S
WORKHORSE CHASSIS	31M	31W	32H	34D	34J	34T	36S
Engine CID	454	N/A	454	454	454	N/A	454
Wheel Base	190"	N/A	208"	208"/247"	208"/247"	N/A	208"/247"
GVWR lbs/kgs (1)	17,000/7,710	N/A	18,000/8,163	20,000/9,072	20,000/9,072	N/A	20,000/9,072
Front GAWR lbs/kgs (2)	6,000/2,721	N/A	6,000/2,721	6,000/2,721	6,000/2,721	N/A	6,000/2,721
Rear GAWR lbs/kgs (2)	11,000/4,987	N/A	12,000/5,443	14,500/6,577	14,500/6,577	N/A	14,500/6,577
Base Weight lbs/kgs (3)	13,200/5,986	N/A	13,800/6,259	15,690/7,116	14,700/6,667	N/A	16,300/7,392
GCWR lbs/kgs (4)	20,500/9,297	N/A	21,000/9,524	21,000/9,524	21,000/9,524	N/A	21,000/9,524
Hitch Rating/Tongue Weight lbs	3,500/350	N/A	3,500/350	3,500/350	3,500/350	N/A	3,500/350
Hitch Rating/Tongue Weight kgs	1,588/159	N/A	1,588/159	1,588/159	1,588/159	N/A	1,588/159
Fuel Capacity gal/lbs	75/450	N/A	75/450	75/450	75/450	N/A	75/450
Fuel Capacity gal/kgs	75/204	N/A	75/204	75/204	75/204	N/A	75/204

							
DIMENSIONS	31M	31W	32H	34D	34J	34T	36S
Overall Length	31' 4"	31' 10"	32' 10"	34' 10"	34' 10"	34' 10"	36' 10"
Overall Height	11' 8"	11' 8"	11' 8"	11' 8"	11' 8"	11' 8"	11' 8"
Overall Width (maximum)	102"	102"	102"	102"	102"	102"	102"
Interior Height (maximum)	79"	79"	79"	79"	79"	79"	79"
Interior Width (maximum)	96"	96"	96"	96"	96"	96"	96"

STORAGE CAPACITY (CU.FT.)	31M	31W	32H	34D	34J	34T	36S
Exterior (Ford/Workhorse) Est.	N/A	N/A	N/A	110/88	113/107	94/94	84/79

LIQUID CAPACITIES (GALLONS/LITERS)	31M	31W	32H	34D	34J	34T	36S
Fresh Water	100/378	100/378	100/378	100/378	100/378	100/378	100/378
Water Heater	6/23	6/23	6/23	6/23	6/23	6/23	6/23
Body-Waste Holding	50/189	50/189	50/189	50/189	50/189	50/189	50/189
Grey-Water Holding	50/189	50/189	50/189	50/189	50/189	50/189	50/189
Appliance LPG Tank (wc/see note)	25/95	25/95	25/95	25/95	25/95	25/95	25/95

Note: Tank manufacturer's listed water capacity (wc). Actual filled LP capacity is 80% of listing due to safety shutoff required on tank.

1. GVWR (Gross Vehicle Weight Rating): Means the maximum permissible weight of this motor home. The GVWR is equal to or greater than the sum of the unloaded vehicle weight plus the net carrying capacity.
2. GAWR (Gross Axle Weight Rating): Means the maximum permissible loaded weight a specific axle is designed to carry.
3. Base Weight: Means the weight of the motor home without fuel, options, water, cargo, or passengers.
4. GCWR (Gross Combination Weight Rating): Means the value specified by the motor home manufacturer as the maximum allowable loaded weight of this motor home with its towed trailer or towed vehicle. Towing and braking capacities may differ. Refer to Fleetwood and chassis manufacturer manuals for complete information.

N/A = Information not available at time of publication.

FLEETWOOD® RV

Fleetwood Enterprises, Inc.
RV Marketing
P.O. Box 7638
Riverside, CA 92513-7638



Your local Fleetwood RV dealer is:

Colton RV
North Tonawanda, NY 14120
(716) 694-0188
(800) 628-4889
www.ColtonRV.com

Colton RV
Orchard Park, NY 14127
(716) 957-3250
(800) 628-4889
www.ColtonRV.com

TO FIND A FLEETWOOD DEALER near you, call 24 hours a day at 1-800-444-4905 or visit our Website at www.fleetwood.com

FOR CUSTOMER ASSISTANCE, call toll free 24 hours a day at 1-800-322-8216, visit our Website, or you may write to Fleetwood Enterprises, Inc., P.O. Box 7638, Riverside, CA 92513-7638.

Product information and photography included in this brochure were as accurate as possible at the time of publication. For the most current product information and changes, please visit our Website at www.fleetwood.com or contact your local Fleetwood dealer. Subsequent refinements may be evident in the actual product. Prices and specifications are subject to change without notice. All fuel and liquid capacities are approximate and dimensions are nominal. Fleetwood has designed its motor home brands to provide a variety of potential uses for its customers. Each unit features the optimum storage, fluid, seating and sleeping capabilities. Though the customer enjoys this potential, he/she also has the responsibility to select the proper combinations of loads without exceeding the chassis weight capacities.

© 1999 Fleetwood Enterprises, Inc.

Inventory Control Number 130002/2nd Edition 12/99



This award certifies that Fleetwood has met Ford's rigid quality standards for modifying a Ford chassis.