

2007

D A M O N

# CHALLENGER

M O T O R C O A C H



Colton RV & Marine  
3122 Niagara Falls Blvd  
North Tonawanda, NY 14120  
(716) 694-0188  
[www.ColtonRV.com](http://www.ColtonRV.com)

Colton RV & Marine  
3443 Southwestern Blvd.  
Orchard Park, NY 14127  
(716) 957-3250  
[www.Coltonrv.com](http://www.Coltonrv.com)

*Challenging the idea  
that luxury has to  
cost a fortune.*

# CHALLENGING THE IDEA THAT L

You get what you pay for, right?  
You pay a lot and you feel like  
you should get a lot. Pay a little  
and you usually get burned.

Not so with the new Damon  
Challenger.

With Challenger, you pay a little for  
a full size wide body and you get  
more than you would ever expect.  
Luxury amenity for luxury amenity,  
nobody in our price range comes  
close to challenging Challenger.  
For luxury or for value. Consider  
this: Damon is the only company  
that offers a quality Carrier® air  
conditioner – standard. Carrier is  
a trusted, national brand that will  
provide years of trouble-free cooling.  
Other exceptional amenities include  
an AM/FM/CD player in the cock-  
pit, an innovative 7" backup monitor  
with audio, a VCR/DVD package  
and much more. All standard.

*Model 372, Malabar Heights/Dark Oak*



# LUXURY HAS TO COST A FORTUNE.



Challenger's beautiful interior is a welcome haven – there's luxury everywhere, including the nooks and crannies. Like the spacious pantry, the antique brass fixtures and the beautiful solid cabinets. And don't forget Challenger's new Dream Dinette that converts from a cozy dinette to a comfortable bed in one easy step.

There's more, of course. Read on and discover how Challenger not only challenges the laws of economics, but totally redefines them.

# CHALLENGER BUT THE REAL



*Spacious bedroom with rear desk.  
Model 372, Malabar Heights/Dark  
Oak decor shown here.*



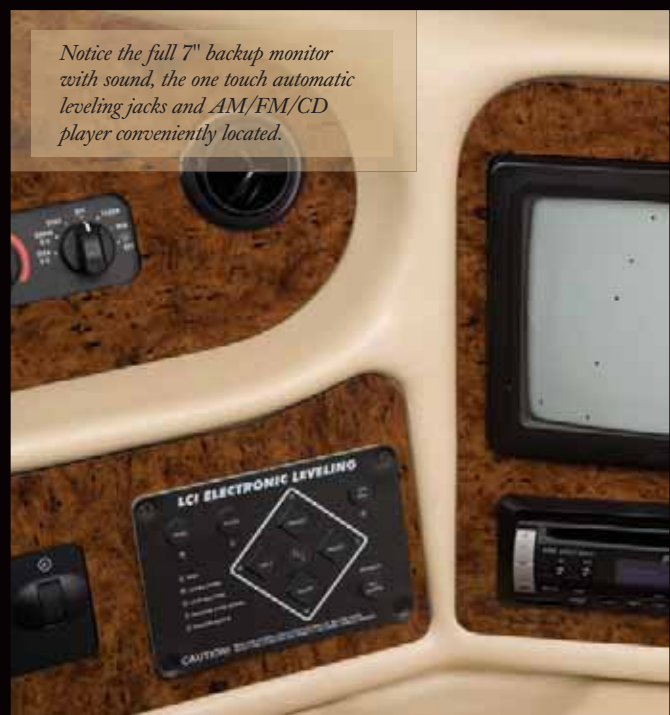
*Sleek contemporary cockpit puts all  
instruments well within reach. In addition,  
there's a convenient AM/FM/CD player  
and backup monitor system with audio.*



*Comfy bathroom with rich solid wood  
framed medicine cabinet and glass  
shower door.*



*Spacious pantry  
with full extension  
drawer guides.*



*Notice the full 7" backup monitor  
with sound, the one touch automatic  
leveling jacks and AM/FM/CD  
player conveniently located.*

# R'S INTERIOR IS STRIKINGLY BEAUTIFUL. AL BEAUTY IS ITS PRICE.



Damon's Dream Dinette converts from a beautiful dinette to a comfortable bed in one easy lever-flipping action. It can even be done with one hand. The result is additional sleeping space when family and friends show up unexpectedly.

A new, larger 7" backup monitor with audio makes backing up safer and easier. In addition, heated, automotive-style exterior power mirrors won't frost up in cold weather.

An enormous pass-through storage compartment in Challenger's full basement lets you bring along just about everything you would ever need - including the kitchen sink.

New for 2007 is a giant 27" color TV over the cockpit with full-function remote, antenna booster and cable jack.

The 5.5 kW Onan® (Marquis Gold™) generator is the gold standard of generators and is now standard on Challenger. It's quieter, easier to service and more efficient than competitive products.

## DECORATIVE DETAILS.

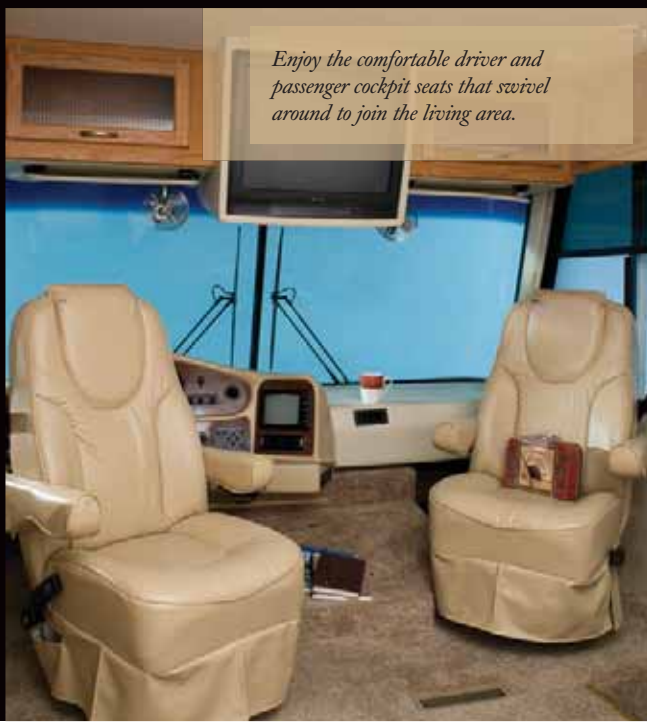
There's added quality of the beautiful antique brass kitchen and bath fixtures, cabinet door pulls and knobs and interior lighting packages available in Challenger.

The domed TPO roof offers one piece construction with no seams that assures long life and durability.

An optional driver's door and power window add safety and convenience.

Challenger's 60-amp converter-charger helps run more appliances for added convenience, plus assures long life and fast recharging cycles.

*Enjoy the comfortable driver and passenger cockpit seats that swivel around to join the living area.*



# IN A CLASS BY ITSELF.

## PAINT

Choose from clean, bold design packages. Few other motorhomes in Challenger's class offer this many choices. Whichever one you choose, it's sure to turn heads.



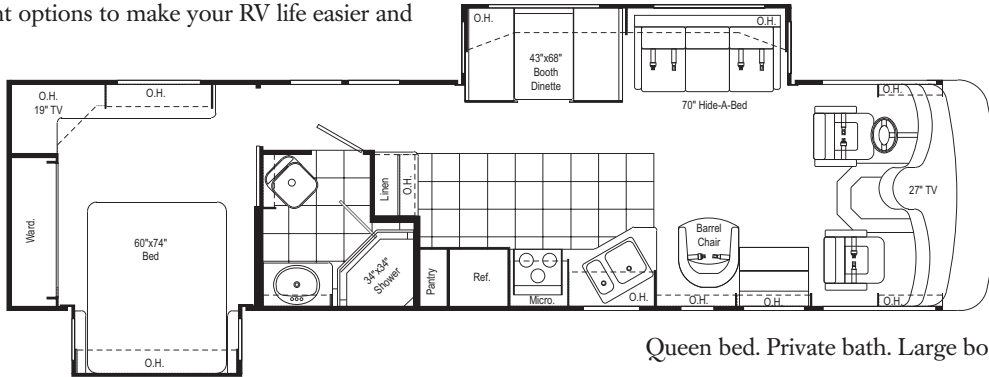
**DELUXE GRAPHICS**



**BEIGE METALLIC**

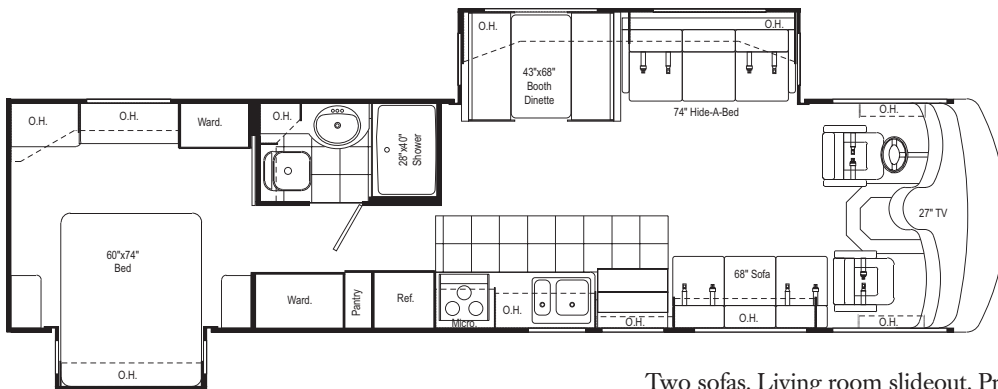
## FLOOR PLANS AND OPTIONS

Challenger offers a variety of floor plans that offer the utmost in luxury, comfort and roominess. Plus, there are many convenient options to make your RV life easier and more efficient.



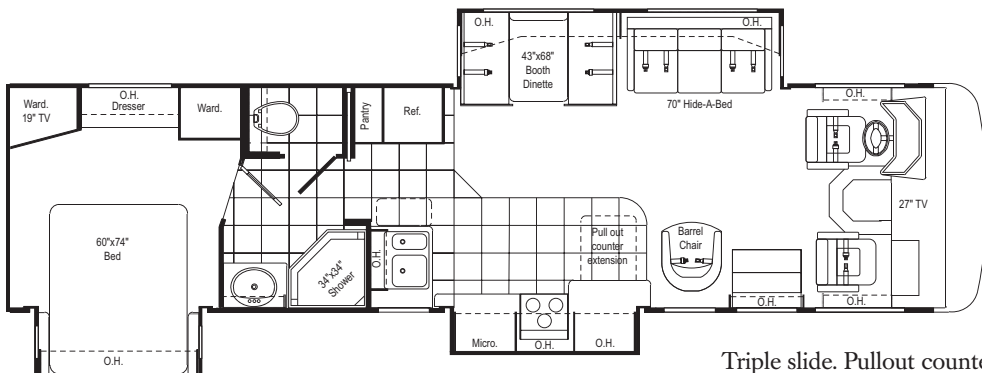
**348**

Queen bed. Private bath. Large booth dinette.



**353**

Two sofas. Living room slideout. Private bath.



**355**

Triple slide. Pullout counter extension.

**DÉCOR**

Challenger offers several decorative environments including your favorite fabrics, solid woods and window treatments. All are designed to provide you with a color coordinated look that's high-fashion and all-comfort.



**NEWPORT SQUARE**



**MALABAR HEIGHTS**



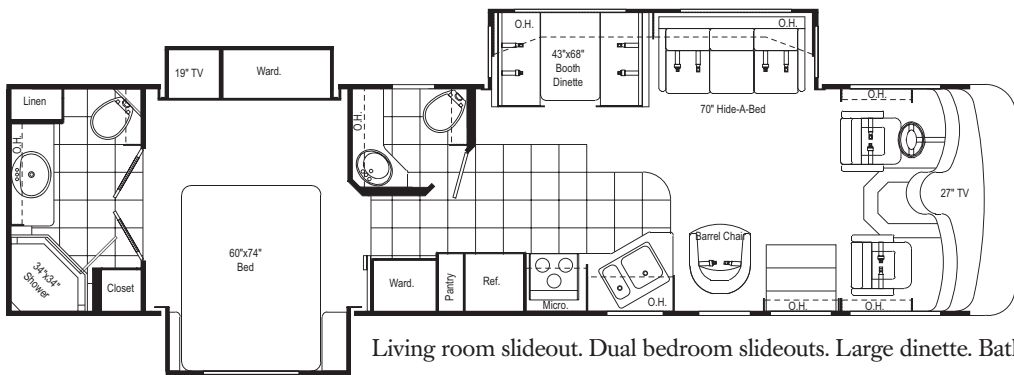
**PARADISE PARK**



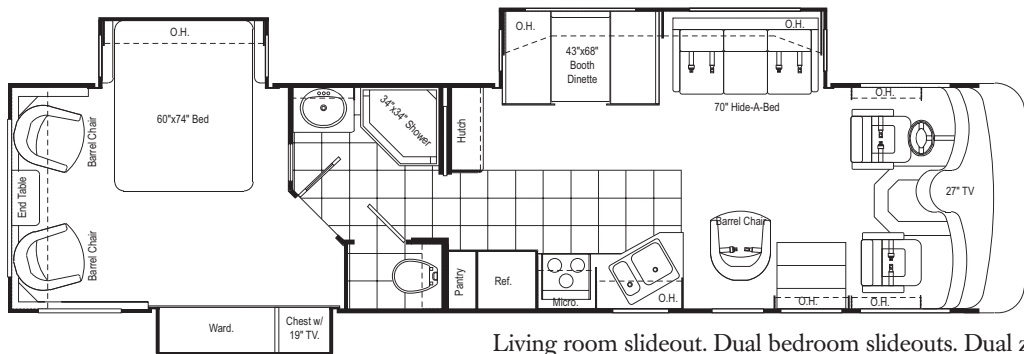
**DARK OAK**



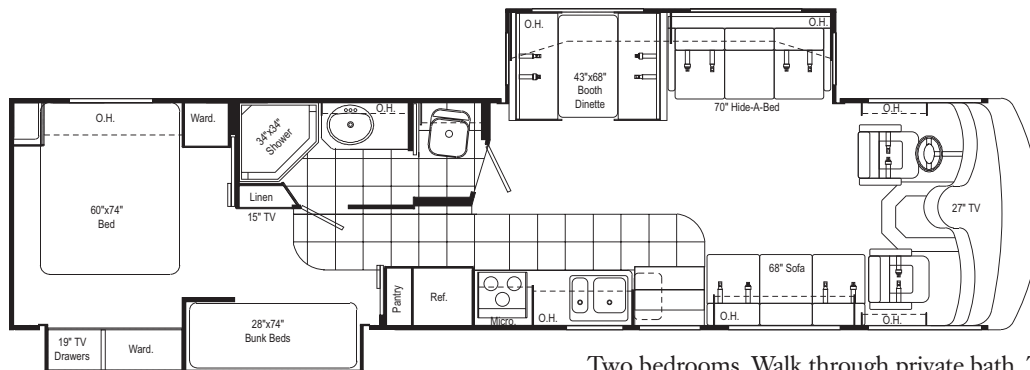
**HONEY MAPLE**



**370**  
Living room slideout. Dual bedroom slideouts. Large dinette. Bath and a half.



**372**  
Living room slideout. Dual bedroom slideouts. Dual zone living.



**376**  
Two bedrooms. Walk through private bath. Two sofas.

# CHALLENGER STANDARD SPECIFICATIONS AND FEATURES

## EXTERIOR

- Fog lights
- Wide-body design
- Radius-cornered domed TPO roof
- Rear ladder
- Aerodynamic front and rear fiberglass caps
- Side-mounted patio awning
- Side-mounted awning over slideout(s)
- White smooth fiberglass exterior with deluxe graphics
- Locking exterior storage doors
- White-trimmed, radius-topped entrance door with deadbolt lock and black-trimmed, clear window with shade and valence
- Black-framed, radius-corner slider windows
- Patio light
- Easy-to-clean, lighted, rotocast storage compartments
- Full basement pass-through storage
- Gas strut-supported storage doors

## CHASSIS

- Automatic one touch leveling jacks with touchpad controls
- Front and rear mud flaps
- Stainless-steel wheel liners
- Trailer hitch (5,000 tow lbs./500 tongue lbs.)
- Emergency start circuit
- Under-hood light
- Automatic transmission with overdrive
- Layer of neoprene vibration dampener



A cavernous cargo area lets you bring everything you'll ever need on the road.

## WEIGHTS AND MEASURES

|                                     | 348            | 353            | 355            | 370            | 372            | 376            |
|-------------------------------------|----------------|----------------|----------------|----------------|----------------|----------------|
| Chassis                             | Workhorse/Ford | Workhorse/Ford | Workhorse/Ford | Workhorse/Ford | Workhorse/Ford | Workhorse/Ford |
| Wheelbase                           | 228            | 228            | 228            | 242            | 242            | 242            |
| Overall length                      | 36'1"          | 36'1"          | 36'1"          | 37'0"          | 37'7"          | 37'7"          |
| Overall width                       | 101"           | 101"           | 101"           | 101"           | 101"           | 101"           |
| Overall height with AC              | 12'0"          | 12'0"          | 12'0"          | 12'0"          | 12'0"          | 12'0"          |
| Std. weight (approx. lbs.)          | 17,256/17,206  | 17,236/17,186  | 17,957/17,515  | 18,091/18,035  | 18,361/17,940  | 18,308/17,984  |
| GVWR                                | 20.7K/20.5K    | 20.7K/20.5K    | 20.7K/20.5K    | 22K            | 22K            | 22K            |
| GCWR                                | 26K            | 26K            | 26K            | 26K            | 26K            | 26K            |
| Fresh water (approx. gal.)          | 71             | 71             | 71             | 71             | 71             | 71             |
| Grey/black water (approx. gal.)     | 53/53          | 53/53          | 53/53          | 78/53          | 53/53          | 53/53          |
| LP (lbs.)                           | 104            | 104            | 104            | 104            | 104            | 104            |
| Sleeping capacity                   | 4              | 5              | 4              | 4              | 4              | 6              |
| Exterior storage capacity (cu. ft.) | 200            | 166            | 200            | 216            | 169            | 225            |
| Interior drawers                    | 20             | 19             | 10             | 20             | 15             | 15             |
| Interior drawer capacity (cu. ft.)  | 13             | 13.5           | 9              | 13             | 11             | 9.5            |
| Fuel capacity (approx. gal.)        | 75             | 75             | 75             | 75             | 75             | 75             |

## CHASSIS

Quality construction starts with the chassis. And Challenger uses only the finest: Either a robust, rugged Ford® or Workhorse® chassis, depending on the floorplan you choose.



Due to constant product improvements, the specifications, component parts and standard/optional equipment are subject to change without notice or obligation. Product photography or diagrams may show equipment that is optional. Damon Motor Coach reserves the right to make changes in prices and models and to discontinue models without notice or obligation. Components, parts or chassis may have been manufactured at times other than the model year indicated. All capacities are approximate and dimensions are nominal. All dry weights are based on standard model features and do not include optional features or equipment. Various RV components and features may differ to conform to local codes. Due to EPA environmental restrictions, engine power and torque ratings may change mid-year.

## ENTRY

- Electric exterior entrance step
- Battery access in stairwell

## COCKPIT

- Vinyl covered dash with pod
- Electronically controlled dash air conditioning
- AM/FM/CD player (single disc, in-dash)
- Cruise control
- Tilt steering wheel
- Map lights (single pancake)
- Dash fans
- Tinted wraparound windshield
- Windshield privacy shade
- Side-mounted power mirrors
- Reclining swivel captain's chairs
- 3-point, wall-mounted seat belts
- Sun visors
- 7" Backup monitor system with audio
- Drink holders

## LIVING AREA

- Barrel chair(s) (n/a on 353 & 376)
- Hide-a-bed
- Sofa bed (passenger side) (353 & 376 only)
- Lambrequin window treatments
- Day/night shades (except kitchen or bunk beds)
- 100% nylon carpeting with stain treatment and padding
- 27" color TV in cockpit overhead with full-function remote, antenna booster and jack

- Video package (VCR/DVD player and control center)
- Soft-touch padded vinyl ceiling

## KITCHEN

- Refrigerator: flush-mounted, double-door
- Refrigerator: raised-panel, solid wood front (dark oak or honey maple)
- 3-burner range and oven
- Folding range cover
- Microwave oven
- Lighted power range hood
- Monitor panel with LPG readout
- Wallpaper border
- Ball bearing drawer guides
- Sink cover
- Vinyl tile flooring
- Solid wood, raised-panel cabinet doors throughout (upper and lower)
- Dream Dinette

## BEDROOM

- Standard mattress
- Bedspread and pillow shams with pillows
- Bunk beds (376 only)
- TV area and jack
- 19" color TV
- 15" LCD color TV (376 only)
- Pin-up lights
- Overhead cabinet in bedroom slideout (n/a on 370)

## BATHROOM

- Vinyl tile flooring
- Shower with surround
- Shower door
- Skylight in shower
- Power vent
- Foot-flush toilet
- Wallpaper border

## UTILITIES

- Air conditioner: 13,500-BTU ducted central (front)
- Air conditioner: 13,500-BTU ducted central (rear)
- Remote thermostatically controlled air conditioning
- Furnace: 35,000-BTU electronic ignition, floor-ducted
- Water heater: 6-gallon gas with electronic ignition

- Water heater bypass kit
- Generator: 5.5 kW Onan® Marquis Gold™
- Converter: 60-amp
- Battery disconnect
- 50-amp, 120-volt service
- Enclosed heated potable and holding tanks
- Black water tank flush
- Telephone hookup
- Cable TV/satellite hookup
- Pre-wired for roof-mounted satellite dish
- Exterior TV prep
- Exterior GFCI receptacle
- Carbon monoxide detector, LP gas and smoke detectors



Challenger's Carrier® roof-mounted air conditioner is run by this programmable remote-control thermostat.

## POPULAR OPTIONS

- Partial paint package
- Upgraded high-gloss sidewall
- Black-framed, dual-pane windows
- Computer tray on passenger side
- Driver's door with slider window
- Corner-mounted power mirrors with heat
- Ultra-leather, reclining swivel captain's chairs
- Euro recliner with leather seating surface and ottoman (n/a on 353 & 376)
- Hide-a-bed (faux leather)
- Sofa (faux leather) (353 & 376 only)
- Upgraded innerspring mattress
- Refrigerator: large flush-mounted, double-door
- Freestanding dinette with two chairs
- Two folding chairs (optional with freestanding dinette)
- Fantastic® power vent
- Computer table IPO chair (optional on 372)
- Water heater: 6-gallon gas/electric with electronic ignition
- Exterior shower



P.O. Box 2888 • Elkhart, IN 46515  
 Customer Service: 800-860-3812  
 Sales Department: 800-860-5658  
[www.DamonRV.com](http://www.DamonRV.com)



DC B/06 © 2006 Damon Motor Coach Printed in U.S.A.