

PREMIUM & ULTRA-LITE TRAVEL TRAILERS

kestonerv.com/outback

OUTBACK



The ultimate
ownership experience.

The ultimate ownership experience.

The goal of Keystone RV Company is to surprise and delight our owners at each and every touchpoint. We're happy when our campers are happy, and we are committed to providing the very best ownership experience in the industry.



**Keystone RV
Company**

1 EASIER SHOPPING.

At Keystone, we make choosing an RV as easy as finding the Big Dipper on a dark summer night. With comprehensive online product information, Key Connect™ product advisors, and an unparalleled dealer network, we will help you select the perfect RV for your family's adventure.

2 INNOVATIVE THINKING.

The road's a nicer place when you have the industry's smartest features behind you. Keystone leads the pack in patented innovations that make our RVs safer, more comfortable, and easier to operate.

3 LONG HAUL QUALITY.

To keep you on the road, there are certain things we just won't build a Keystone RV without. Game-changing features like our Unified Wiring Standard, Tru-Fit™ five-point slide construction, and no-fail Tuf-Lok™ A/C duct joiners combined with exhaustive testing and inspections are some of the reasons why Keystone is able to offer our owners the industry's best 3-year limited structural warranty.

4 WORRY-FREE CUSTOMER SERVICE.

Wherever the road takes you, you're never too far from an authorized Keystone service center. We also offer live service assistance, ultra-fast parts shipping, online maintenance tips and tricks, and a single-point warranty claims policy. *That's* peace of mind.

5 KEYSTONE NATION.

When you choose Keystone, you become a part of one of the largest camping families in the country. We're Keystone Nation. A friendly community where people share photos, travel tips and amazing stories – all in the spirit of camaraderie and adventure. Come join us.

Experience the Outback lifestyle by visiting [#keystoneoutback](#)



OUTBACK



PREMIUM TRAVEL TRAILERS | ULTRA-LITE TRAVEL TRAILERS

Designed to exceed expectations.

Uncommon comfort. Stunning features. Innovative amenities. At Keystone Outback, details matter. We are passionate about crafting each and every one of our full-sized and ultra-lite travel trailers to include inventive details that surprise and delight our owners. From small things, like new built-in pet kennels (in most models)—to big things, like larger windows that bring in the natural beauty of the outside. Outback continues to redefine the camping adventure. Outback: Adventure Elevated.

For more information, please visit keystonerv.com/outback

Keystone EXCLUSIVE Innovations

Year after year, Keystone RV's experienced team delivers Built For the Long Haul quality you expect and exclusive innovations you won't find anywhere else.



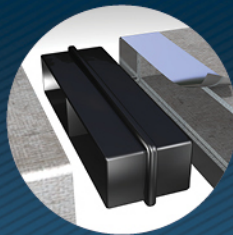
3-year Limited Structural Warranty, 1-year Limited Base Warranty

Every new Keystone RV comes with the industry's best three-year limited structural warranty AND a one-year limited base warranty. Ask your dealer, visit keystonerv.com, or call Keystone Owner Relations for details.



KeyTV™

No more connection guesswork or poor reception. KeyTV offers a game-changing, single point of control of over-the-air, cable, and satellite feeds. Visit us online for more information.



Tuf-Lok™ A/C Duct Joiners

Crush resistant design securely joins ductwork and A/C units, and drastically reduces chilled-air leaks to boost cooling efficiency and comfort.



Color-Coded Wiring Standard

Easy-to-trace circuits simplify electrical and entertainment system troubleshooting.



In-floor Heating Ducts

Distributes heat evenly for greater comfort.



4G LTE and Wi-Fi prep

All Outbacks are equipped with a new antenna that integrates 4G LTE and Wi-Fi with standard VHF/UHF/AM/FM reception.



Tru-Fit™ Slide Construction

A more durable slide room design that minimizes functional motor and structural stress, resists leaking.

Convenience

Cutting-edge technology and amenities that make RV operation easier than ever.



Optional Norco 7.3 BAL Leveling System

Easy setup with push of a button. Automatic and unassisted RV leveling.



ULTRA FRAME TRAVEL TRAILER FRAME

U.S. PATENTS 8-461010 & 4536603 & 8,661,631
AND OTHER PATENTS PENDING

Norco Chassis

One of the industry's most durable lightweight frames, engineered entirely from HSLA steel utilizing durable huck-bolt assembly.



MCD Roller Shades

Upgraded shades provide ultimate comfort and convenience.



Backsplash

Designer inspired backsplash provides residential feel and easy clean up.



48" Fireplace

Sit back and relax indoors with the largest fireplace in the industry.



Low-Profile Vent Hood

Provides more usable space while cooking.



Pet Friendly Kennel

Easily accessible kennel doubles as a spacious under bed storage space.



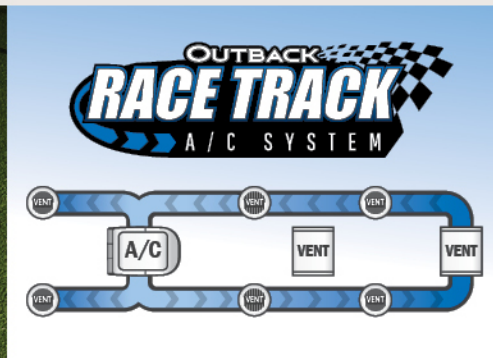
Outdoor Kitchen

Large refrigerator, overhead cabinet storage, cooktop, upgraded metal countertop and sink with hot and cold water.



LCI SolidStep®

Safe and secure main entry with extendable legs and feet for maximum stability.



Dual-Ducted A/C System

Air moves in a circular pattern through two ducts for maximum efficiency and cooling.

Luxury

An all new look with sleek appliances and top-line features that are made to stand out.



more product detail at
www.keystonerv.com/Outback



Interiors

The design process for Outback's current look involved constant owner input and re-imagining of the latest residential trends. Our interior décor reflects a cozy "modern farmhouse" style that will delight those in search of a bright, comfortable environment. We have laser-focused on every detail both obvious and not from our stunning sliding barn doors and crafted color palette, to vaulted ceilings and Real Touch 3D high-definition wall coverings that offer natural texture and movement. We want our unique design to make you feel as though you could switch on the TV, cozy up to the large fireplace, and feel right at home.



Modern Farmhouse

Designer-inspired décor with contemporary wood grain finishes.



All of the Comforts of Home

Inviting living space with upgraded furniture and large panoramic windows.





more product detail at
www.keystonerv.com/Outback

Outback | PREMIUM TRAVEL TRAILERS

- Durable automotive-grade painted front caps
- Drop-frame design on 300ML and 340BH models with 25% more pass-through storage
- All baggage storage doors with metal slam latches
- Rock Run pull-out storage racks on 328RL, 330RL, and 341RD models
- Ultra-stable and secure LCI SolidStep® steps on main entries (N/A 324CG)
- Extended living space with adjustable awnings on all models and a second awning on 328RL and 300ML models
- Convenient, integrated command center for power tongue jack and stabilizer jacks with optional auto-leveling upgrade
- All-new designer-inspired décor featuring contemporary finishes, forged-iron pendant lights above islands, solid surface countertops, tile backsplash and feature walls
- KeyTV™ Keystone's revolutionary single-source, easy-to-use controller for over-the-air, cable and satellite television
- 50" televisions (in most models)
- Stunning 48" fireplaces (N/A 335CG)
- More usable counter space with Furrion® flush-mounted glass cooktop and 21" oven
- Galley slide rooms redesigned with easy-to-clean flooring
- Dual ducted A/C system
- 30" x 40" bedroom picture window
- 60" x 80" mattresses (300ML, 335CG, and 340BH models)
- Pet kennels built into all bed bases
- Digital thermostat
- Arched rafters for extra head room



Automotive Grade Front Caps
KeyGuard chip and rock protection.



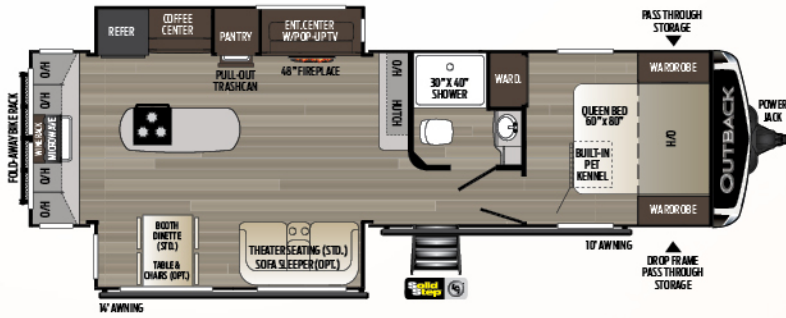
Furrion® Kitchen Appliances
Modern aesthetics and precise performance.



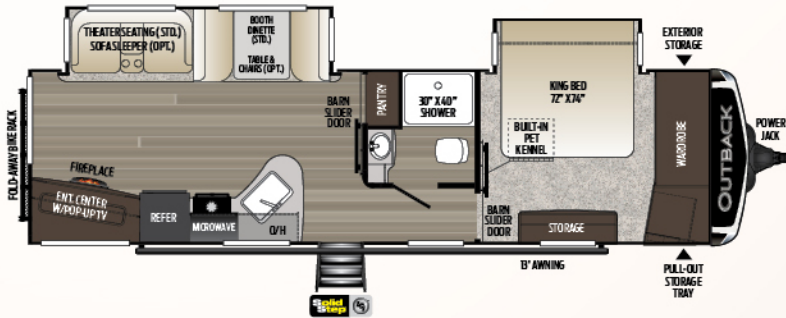
King Bed Suite
Large king size mattress with overhead storage (324CG, 328RL, 330RL and 341RD models).



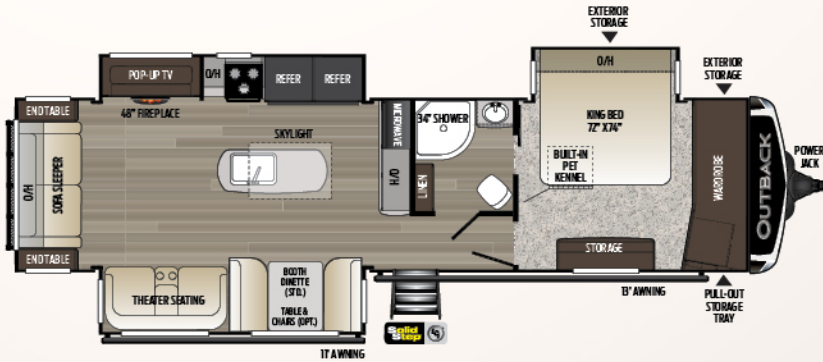
Pendant Lighting
Farmhouse pendant lighting adds a touch of designer inspired flare to your home-away from home.



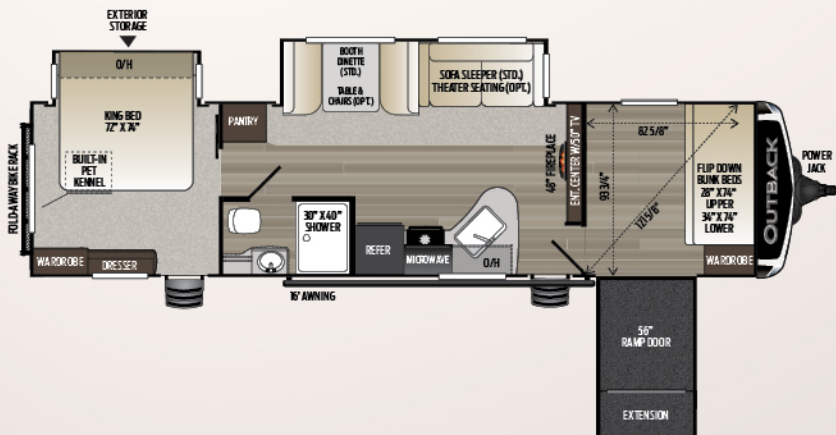
300ML | Mid-living room, two slides
Weight: 7900 LBS. | Length: 34' 9"



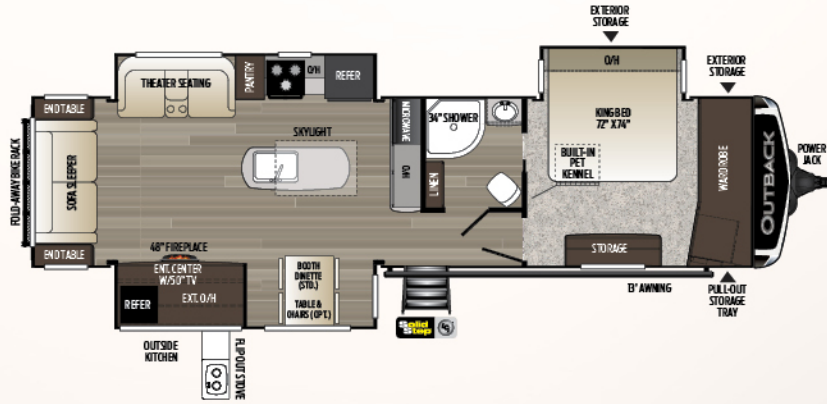
313RL | Rear entertainment, two slides
Weight: 7795 LBS. | Length: 35'



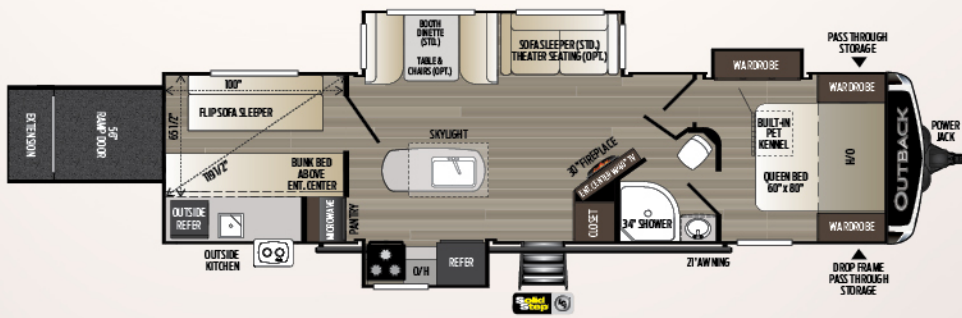
328RL | Rear living, three slides—inc. bedroom
Weight: 8767 LBS. | Length: 37' 7"



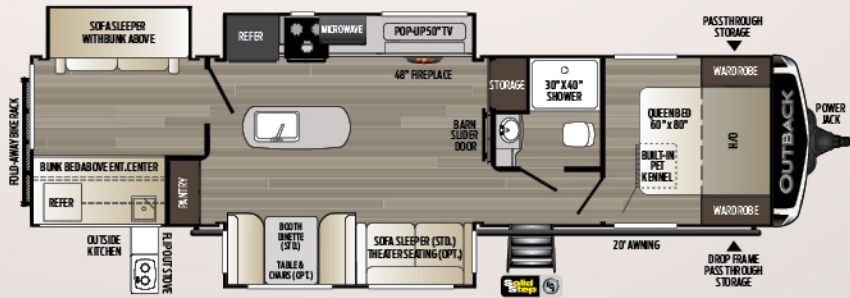
324CG | Cargo garage, two slides
Weight: 7974 LBS. | Length: 37' 1"



330RL | Rear living, three slides, outside kitchen
Weight: 8125 LBS. | Length: 37'



335CG | Cargo garage, two slides
Weight: 8125 LBS. | Length: 37'



340BH | Three-slide bunkhouse, outside kitchen
Weight: 8787 LBS. | Length: 38' 6"



341RD | Rear den entertainment, three slides
Weight: 8425 LBS. | Length: 38' 1"



more product detail at
www.keystonerv.com/Outback

Outback | ULTRA-LITE TRAVEL TRAILERS

- Durable automotive grade painted front caps
- Ultra-stable and secure LCI SolidStep® steps on main entries (N/A 210URS, 240URS)
- Outdoor living space with adjustable awnings (all models)
- ASA backup camera prep
- Friction-hinge entry doors
- 33% larger, 30-pound propane tanks on all models
- 28% larger, 60-gallon fresh water tanks on all models
- All-new designer-inspired décor featuring contemporary finishes, modern backsplash
- KeyTV™ Keystone's revolutionary single-source, easy-to-use controller for over-the-air, cable and satellite television
- More usable counter space with Furrion's® flush-mounted glass cooktop and low-profile hood vent
- LED accent lighting in dinette
- Pull-out trash bins (221UMD and 280URD models)
- Dual ducted A/C system
- Porcelain toilets
- 60" x 80" mattresses (N/A 210URS, 240URS)
- Pet kennels built into bed bases (N/A 210URS, 240URS)
- Laundry chutes (N/A 210URS, 240URS)
- Digital thermostats
- Arched rafters for extra head room
- Electric stabilizer jacks



Automotive Grade Front Caps
KeyGuard chip and rock protection.



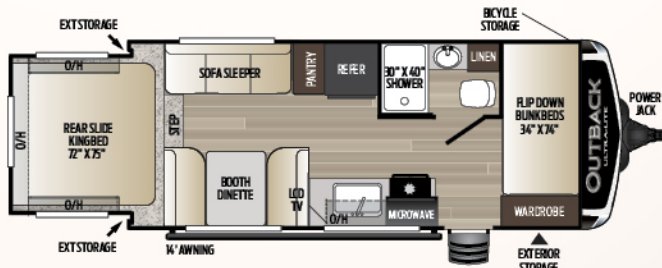
Furrion® Kitchen Appliances
Modern aesthetic and precise performance.



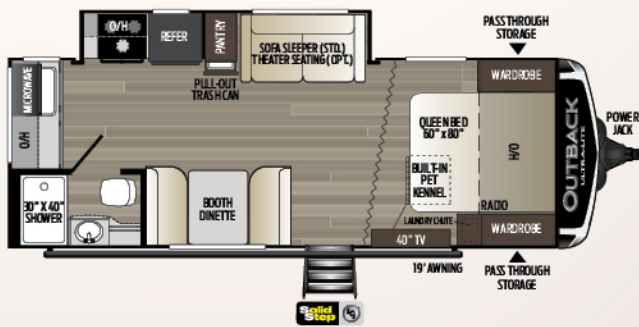
60" x 80" Mattresses
Large queen size mattress with overhead storage (N/A 210URS and 240URS models).



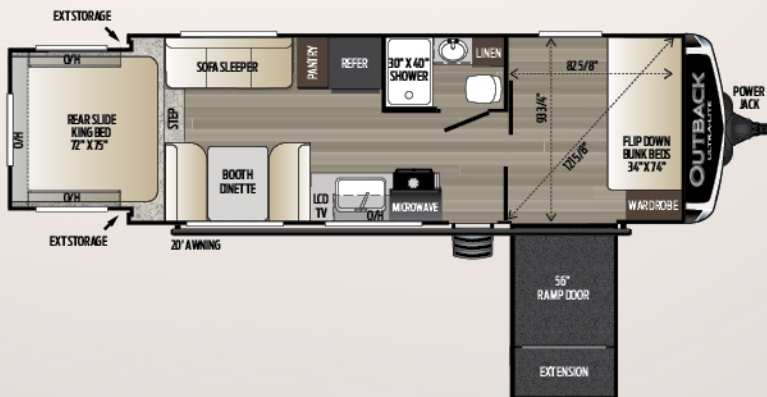
Countertop with Undermount Sink and Pull-out Faucets
Residential undermount sink keeps water from getting underneath and pull-out faucet reaches all corners of the sink.



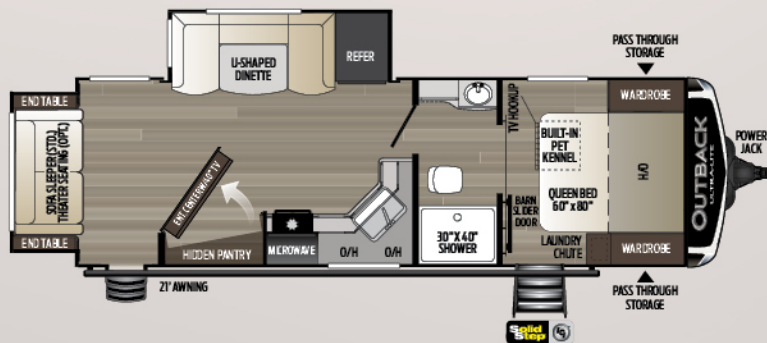
210URS | Double bunkhouse, rear bedroom slide
Weight: 4590 LBS. | Length: 23'



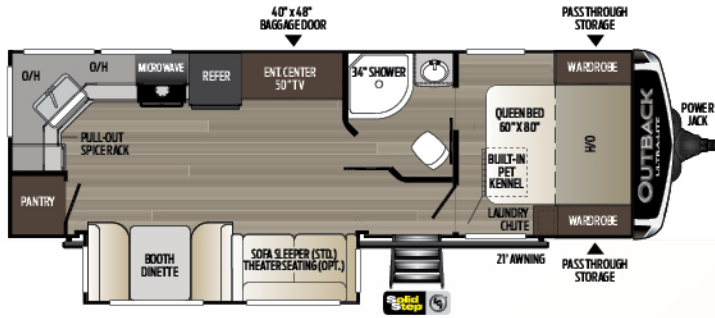
221UMD | Mid-dinette, rear bath
Weight: 4971 LBS. | Length: 27'



240URS | Cargo garage, rear bedroom slide
Weight: 5189 LBS. | Length: 28' 3"

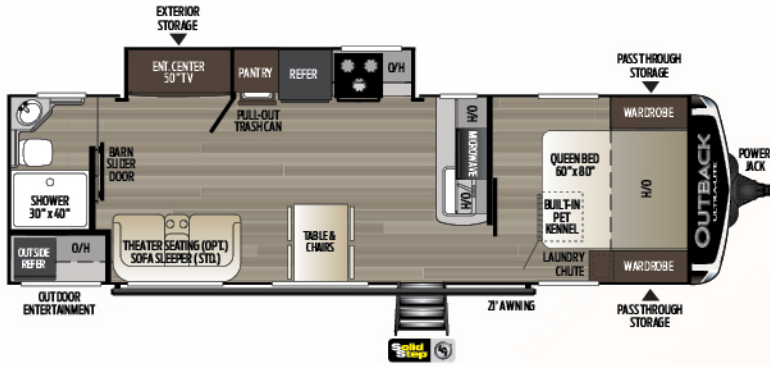


252URS | Hidden pantry, extra large bathroom vanity
Weight: 6210 LBS. | Length: 29' 7"



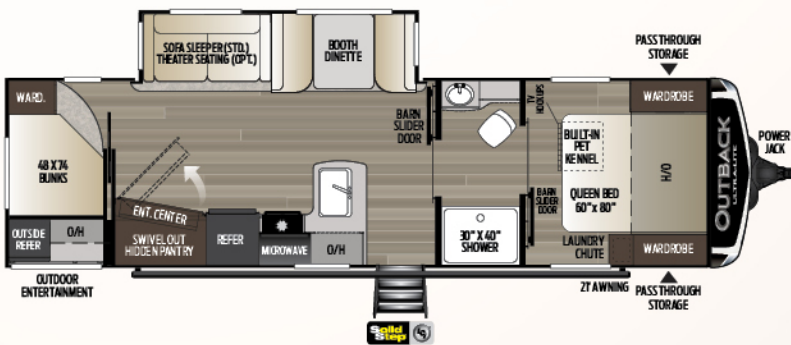
260UML

Mid-living room, rear kitchen
Weight: 5755 LBS. | Length: 30' 6"



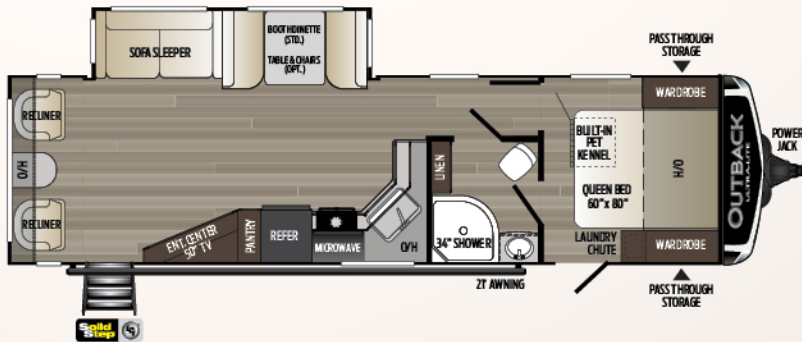
280URB

Rear bath, mid-living, outside entertainment
Weight: 6004 LBS. | Length: 32' 6"



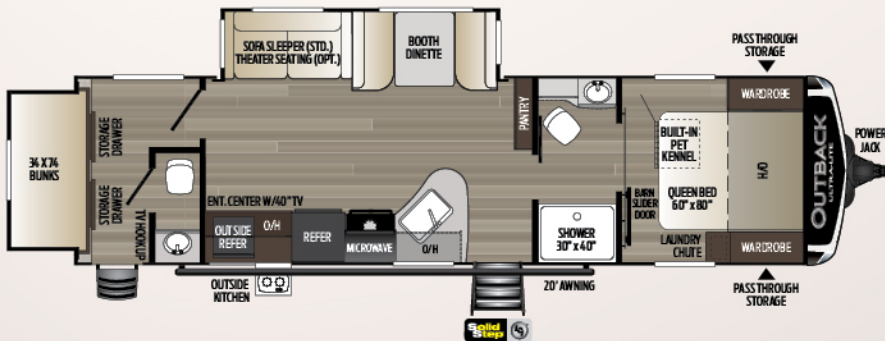
291UBH

Rear double bunk, outside kitchen
Weight: 6494 | Length: 33' 8"



299URL

Rear living, dual entry bath
Weight: 6111 LBS. | Length: 33' 11"



301UBH

Rear-slide bunkhouse, 1/2 bath
Weight: 7006 LBS. | Length: 34' 9"

PREMIUM TRAVEL TRAILERS

| MODEL | WEIGHT | CARRYING CAPACITY | HITCH WEIGHT | FRESH WATER | WASTE WATER | GRAY WATER | LPG | LENGTH* | WIDTH | HEIGHT | AWNING |
|-------|--------|-------------------|--------------|-------------|-------------|------------|-----|---------|-------|--------|---------|
| 300ML | 7900 | 1600 | 1050 | 60 | 38 | 76 | 60 | 34' 9" | 8' | 11' 2" | 14'/10' |
| 313RL | 7795 | 2205 | 1025 | 60 | 38 | 76 | 60 | 35' | 8' | 11' 4" | 21' |
| 324CG | 7974 | 2526 | 870 | 60 | 38 | 76 | 60 | 37' 1" | 8' | 11' 4" | 16' |
| 328RL | 8767 | 1733 | 1075 | 60 | 38 | 76 | 60 | 37' 7" | 8' | 11' 4" | 11'/13' |
| 330RL | 8839 | 1661 | 1100 | 60 | 38 | 76 | 60 | 37' 7" | 8' | 11' 4" | 13' |
| 335CG | 8125 | 2375 | 1155 | 60 | 38 | 76 | 60 | 37' | 8' | 11' 4" | 21' |
| 340BH | 8787 | 1713 | 1040 | 60 | 38 | 76 | 60 | 38' 6" | 8' | 11' 4" | 20' |
| 341RD | 8425 | 2075 | 1045 | 60 | 38 | 76 | 60 | 38' 1" | 8' | 11' 4" | 21' |

ULTRA-LITE TRAVEL TRAILERS

| MODEL | WEIGHT | CARRYING CAPACITY | HITCH WEIGHT | FRESH WATER | WASTE WATER | GRAY WATER | LPG | LENGTH* | WIDTH | HEIGHT | AWNING |
|--------|--------|-------------------|--------------|-------------|-------------|------------|-----|---------|-------|--------|--------|
| 210URS | 4590 | 1910 | 485 | 60 | 30 | 30 | 60 | 23' | 8' | 11' 1" | 14' |
| 221UMD | 4971 | 2229 | 600 | 60 | 30 | 30 | 60 | 27' | 8' | 11' 1" | 19' |
| 240URS | 5189 | 2401 | 590 | 60 | 30 | 30 | 60 | 28' 3" | 8' | 11' 1" | 20' |
| 252URS | 6210 | 1580 | 790 | 60 | 30 | 60 | 60 | 29' 7" | 8' | 11' 1" | 21' |
| 260UML | 5755 | 1845 | 600 | 60 | 30 | 60 | 60 | 30' 6" | 8' | 11' 1" | 21' |
| 280URB | 6004 | 1596 | 650 | 60 | 30 | 60 | 60 | 32' 6" | 8' | 11' 1" | 21' |
| 291UBH | 6494 | 1706 | 655 | 60 | 30 | 60 | 60 | 33' 8" | 8' | 11' 1" | 21' |
| 299URL | 6111 | 1579 | 695 | 60 | 30 | 60 | 60 | 33' 11" | 8' | 11' 1" | 21' |
| 301UBH | 7006 | 2494 | 900 | 60 | 60 | 60 | 60 | 34' 9" | 8' | 11' 2" | 20' |

DISCLAIMER: Product information is as accurate as possible as of the date of publication of this brochure. All features, floor plans, and specifications in this brochure are subject to change without notice. Please also consult Keystone's web site at www.keystonerv.com for more current product information and specifications. Tow Vehicle Disclaimer. CAUTION: Owners of Keystone recreational vehicles are solely responsible for the selection and proper use of tow vehicles. All customers should consult with a motor vehicle manufacturer or their dealer concerning the purchase and use of suitable tow vehicles for Keystone products. Keystone disclaims any liability or damages suffered as a result of the selection, operation, use or misuse of a tow vehicle. KEYSTONE'S LIMITED WARRANTY DOES NOT COVER DAMAGE TO THE RECREATIONAL VEHICLE OR THE TOW VEHICLE AS A RESULT OF THE SELECTION, OPERATION, USE OR MISUSE OF THE TOW VEHICLE. *Length is defined as the distance from the centerline of hitch pin/coupler to rear bumper of trailer. Please review owner's manual prior to purchase for more information on service warranties, extended use, towing and maintenance. Owner's manuals can be found at keystonerv.com.

PREMIUM OUTBACK TRAVEL TRAILERS

COMFORT PACKAGE (MANDATORY)

50 AMP service/wire and framed for 2nd A/C, 15K BTU ducted air conditioner, 35K BTU high capacity furnace, detachable power cord, backup camera prep, solar prep, quick recovery water heater, hand glazed ash cabinetry, solid surface countertops, AM/FM/CD/DVD player (Bluetooth enabled), luxury appliances, 48" fireplace (30" on 335CG), 8 cu. ft. refrigerator (two 8 cu. ft. refrigerators in 328RL only), 21" flush mount stove, high-rise faucet w/pull-out sprayer, trash can, utensil rack, coat hooks (most models), tri-fold sofa, MCD roller shades, LED puck lights, MaxStor dinette w/LED directional lighting (N/A 330RL), carbon monoxide detector, residential innerspring mattress with bedspread

PREMIUM PACKAGE (MANDATORY)

Polar White high gloss exterior fiberglass, full fiberglass front cap w/rock guard, slam pass-thru baggage doors, rear max cargo rack, LP cover, MORryde steps, black tank flush, radial tires w/15" spare, aluminum wheels, LED lit power awning, XL entry handle, omni directional antenna, exterior convenience utility center, heated and enclosed underbelly w/ designated heat duct to subfloor, moisture barrier floor enclosure, hi-density roof insulation w/attic vent, walk-on roof

OPTIONS

7.3 BAL leveling system, free standing dinette, theater seating (300ML, 324CG, 335CG, 340BH), 2nd A/C

ULTRA-LITE OUTBACK TRAVEL TRAILERS

ULTRA-LITE EXTERIOR GROUP (MANDATORY)

Polar White colored fiberglass, painted front cap, laminated aluminum framed sidewalls, omni directional TV antenna, satellite prep, battery disconnect, cable TV, radial tires w/ spare, stabilizer jacks, black tank flush, easy lube axles, quick connect LP line, friction hinge entry doors, electric awning w/LED lights, heated and enclosed underbelly w/designated heat duct to subfloor, moisture barrier floor enclosure, exterior speakers, magnetic door catches, aluminum rims, 15K A/C, 6 gallon gas/electric DSI water heater, 30 lb. LP tanks w/cover

ULTRA-LITE INTERIOR GROUP (MANDATORY)

AM/FM/CD/DVD player (Bluetooth enabled), ceiling speakers, 21" oven w/glass top, LED HD TV, skylight in bath, ducted A/C, microwave, 8 cu. ft. refrigerator, USB charging ports, tri-fold sleeper sofa (jack-knife sofa - 210UMD, 240URS), MaxStor dinette, high-rise faucet w/pull-out sprayer, pleated shades, luxury appliances, hand glazed ash cabinet doors, porcelain toilet, LED lights, laundry chute (N/A 210UMD, 240URS), 35K BTU high capacity furnace, built-in pet kennel, sink cover, digital thermostat

ULTRA-LITE OPTIONS

Free-standing dinette (221UMD, 299URL), Theater seating (221UMD, 260UML, 280URB, 301UBH), 50 AMP service/wire and braced for 2nd A/C (N/A 210, 221, 240), 2nd A/C (N/A 210, 221, 240)

STANDARDS AND OPTIONS

TT Premier Travel Trailers
 ULTT Ultra-Lite Travel Trailers

| | TT | ULTT |
|---|----|------|
| LIVING AREA | | |
| Upgraded furniture package | ● | ● |
| Pre-drilled and screwed hand-glazed ash cabinetry | ● | ● |
| Large panoramic windows | ● | ● |
| Vinyl flooring | ● | ● |
| 40"/50" HDTV (most models) | ● | ● |
| MCD roller shades* | ● | |
| Vaulted ceiling | ● | |
| USB charging port | ● | |
| LED lighting and (2) LED floor lights | ● | ● |
| Fireplace | ● | |
| KITCHEN | | |
| Deep, single basin sink with 3" drains | ● | ● |
| Trash can storage* | ● | ● |
| Two door 8 cu. ft. refrigerator | ● | ● |
| High-rise faucet w/pull-out sprayer* | ● | ● |
| Utensil tray | ● | ● |
| 3-burner range with oven and microwave* | ● | ● |
| Solid surface countertops* | ● | |
| Skylights over islands | ● | |
| BEDROOM | | |
| Deluxe innerspring mattress | ● | ● |
| TV hook-up | ● | ● |
| Jalousie windows for maximum ventilation | ● | ● |
| USB charging port | ● | ● |
| Built-in pet kennel storage | ● | ● |
| BATHROOM | | |
| Power roof vent and skylight over tub | ● | ● |
| Porcelain foot-flush toilet | ● | ● |
| Tub surround* | ● | ● |
| Radius shower (H/A 300ML, 340BH) | ● | ● |
| APPLIANCES | | |
| AM/FM/CD stereo w/DVD player, MP3 hookup and Bluetooth enabled | ● | ● |
| Two door 8 cu. ft. refrigerator (black) | ● | ● |
| Range with oven and microwave (3 burner)* | ● | ● |
| 6-gallon gas/electric DSI water heater w/quick-recovery capacity of 16.2 gallons per hour | ● | ● |
| 15,000 BTU AC wall thermostat and 35,000 BTU furnace | ● | ● |
| EXTERIOR | | |
| Painted fiberglass front cap w/LED strip lights and rock guard | ● | ● |
| Polar White fiberglass with black framed, tinted safety glass windows | ● | ● |
| Black tank flush | ● | ● |
| Assist entry grab handle | ● | ● |
| Heated enclosed underbelly | ● | ● |
| Lippert Step Above® steps | ● | ● |
| 30 lb. LP bottles | ● | ● |

| | TT | ULTT |
|---|----|------|
| Backup camera prep | ● | ● |
| Double welded dual battery brackets with battery disconnect | ● | ● |
| Exterior speakers | ● | ● |
| Dexter® E-Z Lube® axles | ● | ● |
| Exterior quick connect LP hook-up | ● | ● |
| Power stabilizer jacks with auto-leveling option | ● | |
| Stabilizer jacks (4) with power tongue jack | | ● |
| Satellite prep | ● | ● |
| Slam-latch baggage doors with magnetic door holders | ● | |
| Rear ladder | ● | |
| Water docking station | ● | ● |
| Friction-hinge entry door | ● | ● |
| Rear max cargo rack | ● | |
| Welded aluminum walls with R-7 solid block foam insulation | ● | ● |
| ROOF | | |
| 5' radius, vaulted galvanized steel, tapered trusses on 16" centers | ● | |
| Galvanized steel, trusses on 16" centers | | ● |
| 3/8" roof decking | ● | |
| One-piece TPD roof (tan) | ● | ● |
| R-14 equivalent blanket insulation | ● | ● |
| FLOOR | | |
| 2" welded aluminum laminated floor with R-10 equivalent block foam insulation | ● | ● |
| Wrapped vapor barrier | ● | ● |
| Polypropylene heated underbelly (encloses tanks and valves) | ● | ● |
| CHASSIS | | |
| Powder coated MX6 frame from BAL w/leaf spring equalizing suspension system | ● | ● |
| Dexter E-Z Lube® axles with 10" electric brakes | ● | ● |
| 15" radial tires on aluminum wheels with spare* | ● | |
| 14" radial tires on aluminum wheels with spare | | ● |
| UTILITIES | | |
| 55-AMP converter | ● | ● |
| 30 lb. LP bottles with auto changeover | ● | ● |
| Furrion 4G LTE and Wi-Fi ready | ● | ● |
| 50-AMP shore power line | ● | |
| Detachable 50-AMP shore power line | | ● |
| Fire extinguisher, carbon monoxide detector, LP lead detector, smoke detector | ● | ● |
| Breakaway switch and safety chains | ● | ● |
| Manual slide backup on all electric slide-outs | ● | ● |
| RVIA | ● | ● |
| OPTIONS | | |
| 50-AMP shore power line | ● | |

BUILT FOR THE LONG HAUL



PRINT 10.2019



Colton RV
North Tonawanda, NY 14120
(716) 694-0188
(800) 628-4889
www.ColtonRV.com

Colton RV
Orchard Park, NY 14127
(716) 957-3250
(800) 628-4889
www.Coltonrv.com