

ROCKWOOD

FREEDOM » PREMIER » HIGH WALL » HARD SIDE CAMPERS

ROCKWOOD

FREEDOM » PREMIER » HIGH WALL » HARD SIDE CAMPERS





1910



ROCKWOOD

FREEDOM

YES, YOU'RE CAMPING, BUT THAT DOES NOT MEAN YOUR COMFORT STAYS HOME.

With features available like the three-speed Create-A-Breeze ventilation fan to pull in fresh outside ambient air so you remain comfortable at night and swing level galley to keep kitchen utensils in their place are simple amenities that add tremendously to the comfort of your vacation. It's your vacation. Do it right..

Water Pump with Filter (Std.)



Easy Glide Scissorpole Bed Supports
(Except LTDs)



Toylok Mounted Locking System
(Std. 232XR, 282TXR, 2280BH, HW316TH,
A122BH, A122TH Only)



Heated Mattress (Std. Opt.)



Outside Grill with Work Table (Std.
Freedom, Premier, Hard Side, High Wall)



EZ Reach Storage Trunk (Some Models)



Crank Down Stabilizer Jack (Std.)



Swing Down Galley (Except LTDs, Hard Side, High Wall)

ROCKWOOD

PREMIER

THE ROCKWOOD PREMIER IS THE TOP TENT CAMPER ON THE MARKET TODAY.

The expansive EZ Reach storage trunk for that extra cargo space, a comfortable, heated, inner-spring mattress, for a peaceful night's sleep, large slide out dinette for a more spacious interior and the convenient power lift system for easier setup are some of the basic features that really make your camper a Premier.

Easy Opening Deluxe Pull-up Curtains.
(Std. Premier and High Wall)



LED Bunk Light and Fan
(Std. Premier & High Wall)



Metal Full Extension Drawer Guides (Std.)



Bike Rack Option (Most Models)



Fantastic Fan (Except LTDs.)



Outside Shower
(Incl. w/ Hot Water Pkg:
Std: Premier, Hard Side,
High Wall and Opt: Freedom)



Solar Panel Prep (Std. all models)
The Zamp 40 amp. portable solar panel shown is sold separately.



One-Piece Door (Except LTD's, Hard Side)
and Large Entry Assist Handle (Except LTD's)





2716G



06

HW296



ROCKWOOD

HIGH WALL

KISS THE CAMPGROUND BATH HOUSE GOODBYE.

Welcome to the Rockwood High Wall Series. We have designed this series for the camping family who wants the refinement of larger vacationing units in a light-weight camper. Ample counterspace, upgraded appliances, convenient pull-up curtains providing a wide view of the surroundings and tasteful interiors make this camper a gorgeous option to experience.

AM/FM Stereo with CD Player

(Std. Premier, Hard Side & High Wall, HW296 Std. w/ AM/FM/CD Stereo with DVD Player)

Hanging Wardrobe

(Opt. all Models Except Freedom, Hard Side & LTD's)

Power Lift (Std. Premier, High Wall and Freedom XR models. Opt. MAC/LTD)

Double Entry Step

(Std. Freedom XR Models, All HW Models, and Hard Side A212HW)



Beautiful Hardwall Shower with a residential-style flush toilet complete with 12-gallon black and gray water holding tank and monitor panel. (Std. High Wall)



Black Water Hose Storage (Std. HW models)



Add-a-Room with Privacy Panels (Opt. all Models Except Hard Side)





C

K

B

A

F

ROCKWOOD
Premier

N

G

M

L

H

I

D

ROCKWOOD

SUPERIOR CONSTRUCTION



- A** Three Stage Double Arm Lifter Posts (NA Hard Side)
- B** Fiberglass Vacuum Bonded Radius Roof w/ No Center Seam (NA Hard Side)
- C** Five-Piece Vinolon Supreme Tenting (NA Hard Side)
- D** E-Z Crank Down Stabilizer Jacks w/Sand Pads
- E** Full Perimeter Aluminum Bed Frames (NA Hard Side)
- F** Plywood Bunk Ends (NA Hard Side)
- G** Seven-Way Pigtail Wiring
- H** Under Floor 20 Gallon Fresh Water Tank (LTDs 11 Gallon Above Floor)
- I** Powder Coated Tubular Steel Frame
- J** Powder Coated Rafter Poles and Bed Bows (NA Hard Side)
- K** Air Conditioner Reinforcing Laminated Into Roof (NA Hard Side)
- L** Steel Belted Radial Tires
- M** Easy Lube System (Except LTDs)
- N** Smooth Fiberglass Vacuum Bonded Exterior (NA on Freedoms)
- O** One-Piece Door (Except LTDs & Hard Side)



DEXTER TORFLEX

(Standard on Premier, High Wall and Hard Side Models)

- Independent wheel suspension and self-damping action
- Rubber cushioning eliminates metal-to-metal contact.
- Forged torsion arm for maximum strength

Most models are also equipped with E-Z Lube® System and Nev-R-Adjust® Brakes.

ROCKWOOD

HARD SIDE

QUITE POSSIBLY THE BEST OF BOTH WORLDS.

When you combine the solid exterior of a travel trailer with a Premier tent camper, you get the Rockwood Hard Side Series, giving your camping experience the best of both. Bringing a smooth, fiberglass vacuum bonded exterior with a quick, easy set up, while retaining the towing and storage advantages of a tent camper, the Hard Side camper is the perfect blend.



Gas Strut Lift Assist
(Std. Hard Side Only)



Molded LP Bottle Covers
(Std. Hard Side, High Wall Only)



Power Roof Lift Assist
(Std. A192HW, A194HW, A212HW Only)



Hard Side Awning & Screen Room option.



SPECIFICATIONS

Model number of any particular unit does not necessarily reflect the overall length of the unit itself.

MODEL	A122	A122S	A122SXR	A128S	A122BH	A122TH	A192HW	A194HW	A212HW
BASE/DRY UNIT WEIGHT	1893	1955	2085	1948	1943	2186	2100	2052	2332
BASE DRY HITCH WEIGHT	247	283	300	290	268	354	330	327	336
BASE DRY AXLE WEIGHT	1646	1672	1785	1658	1675	1832	1770	1725	1996
CARGO CAPACITY	1005	1217	1217	1046	1217	1630	1192	1237	966
BOX SIZE	12'	12'	12'	12'	12'	12'	12'	12'	14'
TRAILER SIZE (CLOSED W/ HITCH)	17' 1"	18' 11"	19' 11"	18' 11"	19' 2"	22' 1"	18' 11"	18' 11"	20' 10"
HEIGHT (CLOSED)	60"	60"	65"	60"	60"	65"	66"	66"	67"
FRESH WATER CAPACITY	26	26	26	26	26	26	26	26	26

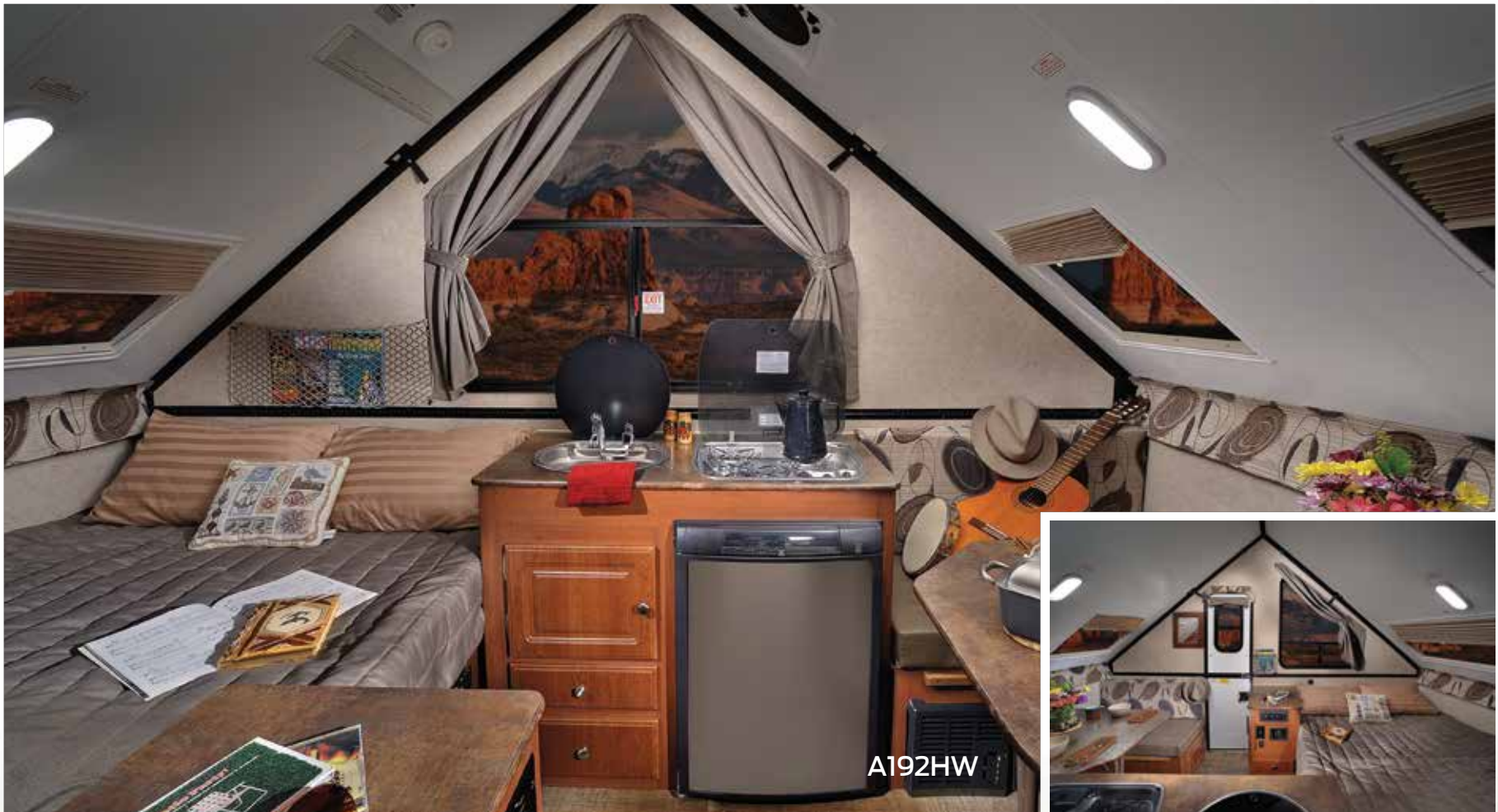
The Base/Dry Unit Weight listed represents the weight of one trailer with that model's standard equipment including the content of specified Option Packages. The actual weight of a trailer with its specific option content is documented on the yellow weight tag attached to the unit when weighed upon completion. This weight is provided for use in comparison to the manufacturer's published towing capacity of potential tow vehicles.



A122TH



A192HW



ROCKWOOD PREMIER

SPECIFICATIONS

Model number of any particular unit does not necessarily reflect the overall length of the unit itself.

MODEL	23176	25146	25166	27166
BASE/DRY UNIT WEIGHT	2445	2446	2473	2555
BASE DRY HITCH WEIGHT	358	303	292	370
BASE DRY AXLE WEIGHT	2087	2143	2181	2185
CARGO CAPACITY	894	838	800	796
BOX SIZE	12'	12'	12'	14'
TRAILER SIZE (Closed w/ Hitch)	19' 1"	19' 1"	19' 1"	19' 4"
HEIGHT (Closed)	61"	61"	61"	61"
TRAILER LENGTH (Open)	23' 9"	23' 9"	23' 9"	25' 9"
FRESH WATER CAPACITY	26	26	26	26

The Base/Dry Unit Weight listed represents the weight of one trailer with that model's standard equipment including the content of specified Option Packages. The actual weight of a trailer with its specific option content is documented on the yellow weight tag attached to the unit when weighed upon completion. This weight is provided for use in comparison to the manufacturer's published towing capacity of potential tow vehicles.

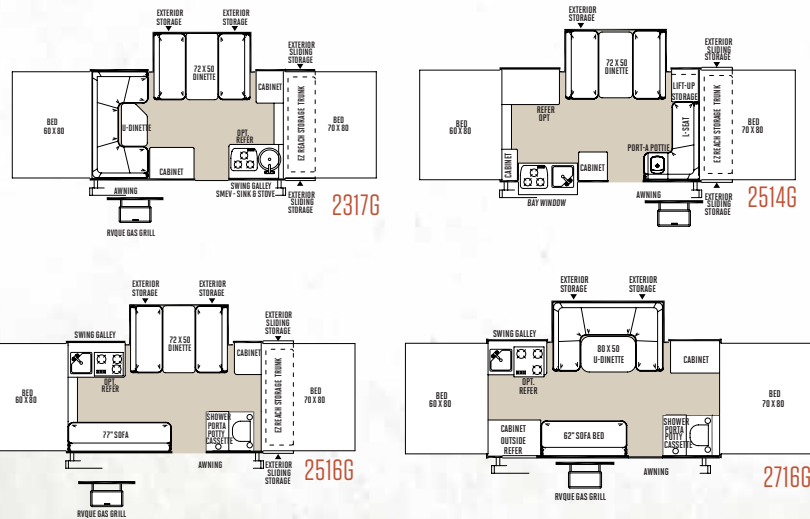
ROCKWOOD HIGH WALL

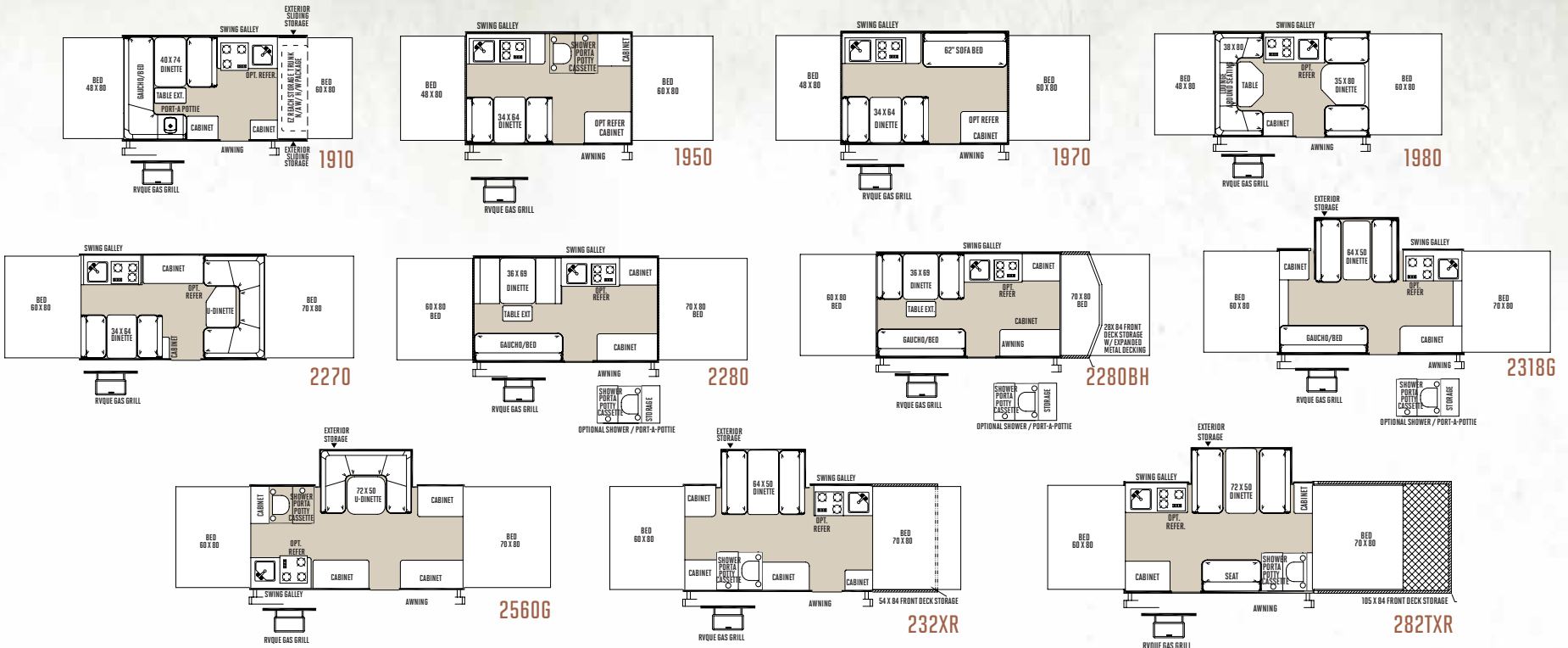
SPECIFICATIONS

Model number of any particular unit does not necessarily reflect the overall length of the unit itself.

MODEL	HW 276	HW 277	HW 296	HW 316TH
BASE/DRY UNIT WEIGHT	2806	2962	3135	3738
BASE DRY HITCH WEIGHT	279	370	373	337
BASE DRY AXLE WEIGHT	2527	2592	2762	3401
CARGO CAPACITY	935	870	1217	2317
BOX SIZE	14'	14'	16'	14'
TRAILER SIZE (Closed w/ Hitch)	19' 4"	19' 4"	21' 4"	28' 4"
HEIGHT (Closed)	71"	71"	72"	72"
TRAILER LENGTH (Open)	25' 9"	25' 9"	27' 9"	33' 9"
FRESH WATER CAPACITY	26	26	26	26
GRAY WATER CAPACITY	12	12	12	12
BLACK WATER CAPACITY	12	12	12	12

The Base/Dry Unit Weight listed represents the weight of one trailer with that model's standard equipment including the content of specified Option Packages. The actual weight of a trailer with its specific option content is documented on the yellow weight tag attached to the unit when weighed upon completion. This weight is provided for use in comparison to the manufacturer's published towing capacity of potential tow vehicles.





ROCKWOOD FREEDOM

SPECIFICATIONS

Model number of any particular unit does not necessarily reflect the overall length of the unit itself.

MODEL	1910	1950	1970	1980	2270	2280	2280BH	2318G	2560G	232XR	282TXR	1640LTD	1940LTD
BASE/DRY UNIT WEIGHT	1944	1732	1764	1737	2006	2050	2122	2153	2364	2579	2975	1344	1493
BASE DRY HITCH WEIGHT	245	240	252	219	293	331	382	313	249	310	219	190	174
BASE DRY AXLE WEIGHT	1699	1492	1512	1518	1713	1719	1740	1840	2115	2269	2756	1154	1319
CARGO CAPACITY	1032	917	866	866	966	966	991	891	866	1212	2317	683	762
BOX SIZE	10'	10'	10'	10'	12'	12'	12'	12'	14'	12'	12'	8'	10'
TRAILER SIZE (Closed w/ Hitch)	17' 1"	15' 3"	15' 3"	15' 3"	17' 2"	17' 2"	18' 8"	17' 2"	19' 2"	21' 9"	26'	12'	14'
HEIGHT (Closed)	57"	57"	57"	57"	57"	57"	57"	57"	57"	62 1/2"	62 1/2"	56"	56"
TRAILER LENGTH (Open)	20' 4"	20' 1"	20' 1"	20' 1"	23' 10"	23' 10"	23' 10"	23' 10"	26' 5"	26' 5"	30' 8"	17' 1"	20' 1"
FRESH WATER CAPACITY	20	26	20	20	20	20	20	20	26	26	26	11	11

The Base/Dry Unit Weight listed represents the weight of one trailer with that model's standard equipment including the content of specified Option Packages. The actual weight of a trailer with its specific option content is documented on the yellow weight tag attached to the unit when weighed upon completion. This weight is provided for use in comparison to the manufacturer's published towing capacity of potential tow vehicles.

STANDARDS & OPTIONS

MODELS	LTD	F	P	HW	HS
STANDARD & OPTIONAL FEATURES					
Cherry Interior with "Tile-Look" Linoleum	--	--	S	S	S
Hickory Interior with "Tile-Look" Linoleum	S	S	--	--	--
Two-Tone Fabric Interiors	S	S	S	S	S
Residential Style Kitchen Faucet	S	S	S	--	S
Stainless Steel Look Appliances and Sink	--	--	S	S	S
Double Pan Sink with High Rise Faucet (HS: A194HW, A212HW Only)	--	--	--	S	S*
Electric Water Pump	S	S	S	S	S
Hot Water Package (Incl. Water Filter, Outside Shower, Six Gallon DSI Hot Water Heater) (F: 1910, 1970, 1980, 2270, 2280, 2280BH, 2318G)	--	0*	S	S	S
Port-a-Potty (F: 1910 Only P: 2514G HS: A122, A122S, A122BH, A122TH, A128S, A192HW, A212HW Only)	--	S*	S*	--	S*
Shower Cassette Package Incl. Water Filtration System, Six Gallon DSI Hot Water Heater, Demand Water Pump, and Cassette Toilet (Opt. F: 2280, 2280BH, 2318G) (Std. F: 1950, 2560G, 232XR, 282TXR, P: 2516G 2716G HW: 194HW)	--	S*/0*	S*	--	S*
Hard Wall Shower with Residential Flush Toilet and Monitor for Holding Tanks, Battery and Water Pump Switch	--	--	--	S*	--
Antifreeze Inlet to Bypass Fresh Water Tanks When Winterizing	S	S	S	S	S
Fold Over Galley with Upper and Lower Storage (Std. P: 2514G Only)	S	--	S*	--	--
Two Burner Free-Standing Range	S	--	--	--	--
Swing Level Galley with Storage (N/A P: 2514G, 2317G)	--	S	S*	--	--
Permanently Mounted 3-Burner Indoor Range w/ Stove Cover	--	S	--	--	--
Permanently Mounted 3-Burner Indoor Range w/ Glass Stove Top Cover	--	--	S	--	S
Three Burner Glass Top Stove with Oven (HS: A194HW, A212HW Only)	--	--	--	S	S*
Microwave	--	--	--	S	S

MODELS	LTD	F	P	HW	HS
Large Built-In Icebox	S	S	S	--	--
110V Electric Outside Accessible Refer (P: 2716G Only)	--	--	S*	--	--
3 Way Refer 1.9 cu. ft.	0	0	--	--	--
3 Way Refer 2.5 cu. ft.	--	--	0	--	S
Extra Large 3 Way Refer (HS: A194HW, A192HW, A212HW Only)	--	--	--	0	S*
Free Standing Lite-Ply Table-High Pressure Laminate (Most Models)	S	S	S	S	S
Comfortable Family Style Dinette w/ 4" Cushions	S	OPA	S	S	S
Residential Style Raised Panel Doors	--	--	S	S	S
Wood Drawers w/ Full Extension Metal Guides	S	S	S	S	S
Large Clothes Bar	--	--	S	S	S
Hanging Wardrobe	--	--	0	0	--
Hanging Pantry	--	0	0	0	--
AM/FM Stereo with CD player	--	--	S	S	S
AM/FM Stereo with CD and DVD player (HW296 Only)	--	--	--	S*	--
TV Outlet with Cable and Satellite Hook Up	--	S	S	S	S
LCD TV (HW296 Only)	--	--	--	S*	--
30 Amp Detachable Power Cord w/ Storage Bag	--	S	S	S	S
25 Amp Converter w/ Built in Battery Charger	S	--	--	--	--
35 Amp Converter w/ Built in Battery Charger	--	S	S	S	S
12V Safety Breaker	S	S	S	S	S
Roof Vent	S	--	--	--	--
Create-A Breeze Three Speed Fantastic Fan	--	SO	SO	SO	SO
Air Conditioner Wiring Kit	0	0	0	0	--
10k BTU Cool Cat Heat Pump	--	--	--	--	S
13.5k BTU Air Conditioner (Factory Installed)	--	--	--	0	--
20k BTU Forced Air Furnace w/ Electric Ignition	0	0	0	0	0
Interior Floor Lights	--	--	--	S	S
2 Ceiling LED Lights w/ Jacks for Accessories	S	--	--	--	--
2 Ceiling LED Lights	--	--	--	--	S
3 Ceiling LED Lights w/ Jacks for Accessories	--	S	S*	--	--

MODELS	LTD	F	P	HW	HS
4 Ceiling LED Lights w/ Jacks for Accessories (P: 2716G Only)	--	--	S*	S	--
Bunk LED Light with Fan	--	--	S	S	--
LED Bunk Light (F: 2318G, 2560G, 232XR, 282TXR Only)	--	S*	S	S	--
LP Leak/Carbon Monoxide Detector	S	S	S	S	S
Privacy Curtains	S	OPA	S	S	S
Deluxe Pull Up Curtains	--	--	S	S	--
Roof Valances	--	OPA	S	S	--
Quilted Top Bed Mattresses	S	S	--	--	--
Quilted Top Innerspring Mattresses (HS: A122, A122S, A122BH, 122TH Only)	--	--	S	S	S*
Quilted Top 60" x 80" Innerspring Mattresses (HS: A192HW A212HW Only)	--	--	--	--	S*
Thermostatically Controlled Heated Mattresses (HS: A122, 122S, A122BH, A122TH, A192HW, A212HW Only)	SO	SO	SO	SO	S*
Leaf-Spring Axle	S	S	--	--	--
Independent Torsion Axles	--	--	S	S	S
Easy Lube Axles	--	S	S	S	S
Spare Tire, Cover and Mount	S	OPB	OPI	OPI	S
12" Radial Tires	S	--	--	--	--
13" Radial Tires (F: Except XR Models)	--	S*	--	--	--
13" Radial Tires w/ Aluminum Wheels (HS: Except TH Models)	--	--	S	--	S*
14" Radial Tires w/ Aluminum Wheels (Std. HS: A212HW) (Note: Dual Axle Models HW296, HW316TH)	--	--	--	S	--
15" Mud Rover Radial Tires, Aluminum Wheels (Std. A122TH, A122SXR Only). With Shocks (Std. F: 232XR, 282TXR Only) (Note: Dual Axle Model F: BR2BTSC)	--	S*	--	--	S*
Electric Brakes	0	S	S	S	S
Slam Latches on Front Trunk Side Doors (P: 2317G, 2514G, 2516G Only)	--	--	S*	--	--
EZ Reach Storage with Sliding Tray on All Front Trunk Models (HS: A192HW, A194HW, A212HW Only)	--	S*	S*	--	S*

LTD = LIMITED, F = FREEDOM, P = PREMIER, HW = HIGH WALL, HS = HARD SIDE | S = STANDARD, SO = STANDARD OPTION, O = OPTIONAL, -- NOT AVAILABLE, TP OR CP = OPTION PACKS, * = SELECTED MODELS



MODELS	LTD	F	P	HW	HS
28.5" Front Storage Deck w/ 200 # Weight Capacity (Std. F: 2280BH, HS: A122BH Only)	--	S*	--	--	S*
54" Frt. Storage Deck w/ 650 # Wt. Capacity (Std. F: 232XR)	--	S*	--	--	--
57" Frt. Storage Deck w/ 650 # Wt. Capacity (Std. HS: A122TH)	--	--	--	--	S*
105" Front Storage Deck w/ 1300 # Weight Capacity (Std. F: 282TXR, HW: HW316TH Only)	--	S*	--	S*	--
Toylok Mounted Locking System (F: 232XR, 282TXR, 2280BH HW: HW316TH HS: A122BH, A122TH)	--	S*	--	S*	S*
(4) Bike Rack (N/A F: 232XR, 282TXR HS: A122TH, HW: HW316TH) (Note: HS: A122 - 2 Bikes only)	0	0*	0	0*	0*
Power Lift System (Std. F: 232XR, 282TXR)	0	0*	S	S	--
Built-in A-Frame Mounting Provision for Equalizer					
Hitch Bar Installation	S	S	S	S	S
Battery Box and Wiring Kit	0	S	S	S	S
Solar Panel Prep	S	S	S	S	S
20 lb. LP Bottle	S	S	S	--	--
Dual 20 lb. LP Bottles with Cover and Automatic LP Regulator (Std. F: 232XR, 282TXR Only)	0	0*	0	--	--
Dual 20 lb. LP Bottles with Molded Hard Cover and Automatic LP Regulator	--	--	--	S	S
Diamond Plated Lower Front Cap	--	--	S	S	S
Diamond Plated Front, Rear and Side Skirt (F: 232XR, 282TXR Only)	--	S*	--	--	--
Awning	S	OPB	OPI	OPI	--
Awning/Screen Room	--	--	--	--	0
Screen Room w/ Privacy Panels	0	0	0	0	--
Outdoor Gas Grill w/ Worktable	0	S	S	S	S
Outside Speaker	--	--	S	S	S
Patio Light (LTD: 1940 Only)	S*	OPA	S	S	S

MODELS	LTD	F	P	HW	HS
Courtesy Light on Front (F: 2280BH, 232XR, 282TXR, HW: 316TH, HS: All Models)	--	S*	--	--	S
110V Exterior Outlet (LTD: 1940 only)	S*	OPA	S	S	S
Black Water Hose Storage	--	--	--	S	--
Door Step	S	OPB*	OPI	OPI	S
Double Door Step (F: 232XR, 283TXR Only, HW: All Models, HS: A122H, A122SXR, A212HW)	--	S*	--	S	--
One Piece Screen Door	--	S	S	S	--
Vented Entrance Door Window w/ Screen	--	--	--	--	S
Folding Grab Handle	--	S	S	S	S
Exterior Graphic Design	S	S	S	S	S
OPTION PACKAGE 1 (Incl. Spare Tire, Tire Bracket, Tire Cover, Installed Step, Awning)	--	--	0	0	--
OPTION PACKAGE A (Incl. Privacy Curains, Roof Valances, 4" Foam Cushions w/ Cover, Under Floor 20 Gallon Fresh Water Tank, A/C Bracing, Patio Light, 110V Exterior Outlet)	--	0	--	--	--
OPTION PACKAGE B (Incl. Spare Tire, Tire Bracket, Tire Cover, Installed Step, Awning)	--	0	--	--	--
STANDARD CONSTRUCTION FEATURES					
Completely Enclosed Living Area	--	--	--	--	S
Fiberglass Vacuum Bonded Roof with Metal Interior Roof	--	--	--	--	S
Gas Strut Lift Assist	--	--	--	--	S
Power Roof Lift Assist (HS: A192HW, A194HW, A212HW Only)	--	--	--	--	S*
Large Rear Roof Tinted Sky Light with Shade	--	--	--	--	S
Two Front Roof Tinted Windows with Shades	--	--	--	--	S
Fiberglass Vacuum Bonded Radius Roof w/ No Center Seam	S	S	S	S	--
Steel Air Conditioner Vent Reinforcing Laminated Into Roof	S	OPA	S	S	--

MODELS	LTD	F	P	HW	HS
CP 3-Stage Double Arm Lifter Posts	S	S	S	S	--
Smooth Fiberglass Vacuum Bonded Exterior w/ Black Accents	--	--	S	S	S
Lower Door Operational in Closed Position	S	S	S	S	--
Five Piece Sectionalized Vinolon Supreme Tenting Tent Permanently Attached on Bunk Ends and Slide Out	S	S	S	S	--
Plywood Bunk Ends	S	S	S	S	--
Full Perimeter Aluminum Bed Frames	S	S	S	S	--
Easy Glide Scissor Pole Bed Supports	--	S	S	S	--
Powder Coated Rafter Poles and Bed Bows	S	S	S	S	--
Tinted Vinyl Windows	S	S	S	S	--
Large, Opening Picture Window	--	--	--	--	S
One Piece Undercoated Structure Wood Floor	S	S	S	S	S
Powder Coated Tubular Steel Frame	S	S	S	S	S
Rear Crank Down Stabilizer Jacks w/ Sand Pads	S	--	--	--	--
(4) E-Z Crank-Down Stabilizer Jacks w/ Sand Pads	--	S	S	S	S
Seamless, High Density Polyethylene Wheel Wells	S	S	S	S	S
11 Gallon Fresh Water Tank	S	--	--	--	--
Under Floor 20 Gallon Fresh Water Tank	--	S	S	S	S
12 Gallon Gray Water Holding Tanks	--	--	--	S	--
12 Gallon Black Water Holding Tank	--	--	--	S	--
2000 lb. Tongue Jack w/ Swivel Wheel	S	S	S	S	S
Power Front Jack	--	--	--	0	0
7-Way Pigtail Plug	S	S	S	S	S

LTD = LIMITED, F = FREEDOM, P = PREMIER, HW = HIGH WALL, HS = HARD SIDE | S = STANDARD, SO = STANDARD OPTION, O = OPTIONAL, -- NOT AVAILABLE, TP OR CP = OPTION PACKS, * = SELECTED MODELS



PRE-DELIVERY INSPECTION FACILITY

20,000 square feet of quality assurance. The bare essentials for a premium product. This state-of-the-art facility gives immediate daily feedback to production for quality assurance in every unit built.



Forest River, Inc. encourages our customers to purchase their Forest River products from a local dealership whenever possible for the following reasons:

It is the goal of Forest River, Inc. that all of our RV owners fully enjoy the RV experience and that customer satisfaction meets or exceeds their expectations!

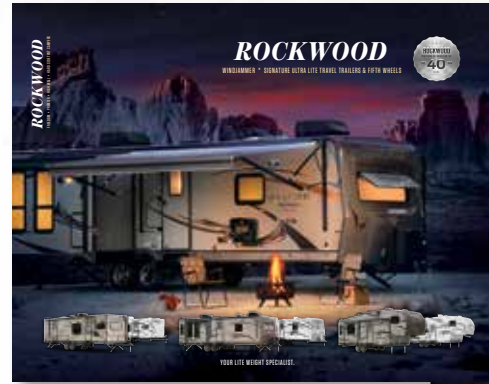
- 1) Forest River, Inc. dealers are independently owned and operated businesses so priority service and scheduling is at their discretion and is often provided to customers that purchased their unit at that dealership.
- 2) Purchasing locally allows customers to establish meaningful relationships with a dealer, enhancing the RV experience through assistance with product questions, user tips or RV regulations for your state or country, and much more!
- 3) Canadian customers must meet requirements to bring an RV purchased out of the country to their home. These requirements may involve additional inspections and certifications, taxes and fees. Your local Canadian Dealer is a professional at meeting these requirements.
- 4) Scheduling timely warranty repairs and adjustments through a local dealership provides far greater flexibility and convenience to you, the customer!

24/7 EMERGENCY ROADSIDE ASSISTANCE

For a worry-free ownership experience Forest River includes one year of Coach-Net RV Technical & Roadside Assistance with each RV purchase. Whether new to the RV lifestyle or an experienced RV enthusiast, Forest River owners have 24/7 access to technical, operational and emergency road service coverage throughout the US & Canada. Coach-Net's fast, dependable service is just a phone call away.

Coach-Net[®]
RV Technical & Roadside Assistance

Look for our other popular lines of Rockwood camping trailers.



WINDJAMMER, SIGNATURE ULTRA LITE TT & FW



ULTRA LITE, ULTRA V, MINI LITE AND ROO

ROCKWOOD

WARRANTY

For details on Rockwood's complete warranty program, see your Rockwood dealer. When it comes to backing products with the same quality and commitment it does when it begins the manufacturing process, the only name you have to remember when you're looking for a recreational vehicle is Rockwood. Rockwood offers the following additional limited warranties to the original purchasers. Consult written warranty for details.

1. Five-year roof warranty,
 2. Twenty-five-year floor warranty,
 3. Five-year frame warranty,
 4. Five-year tent warranty,
 5. Five-year warranty on torsion axle suspension,
 6. Limited lifetime warranty of lifter system,
 7. One-year bumper to bumper.
- Ask your dealer about the available lifetime structural warranty.

YOUR ROCKWOOD DEALER

Colton RV
North Tonawanda, NY 14120
(716) 694-0188
(800) 628-4889
www.ColtonRV.com

Colton RV
Orchard Park, NY 14127
(716) 957-3250
(800) 628-4889
www.Coltonrv.com

201 WEST ELM MILLERSBURG, IN 46543 | WWW.FORESTRIVERINC.COM/ROCKWOOD
574.642.2640



Learn More
Scan this barcode using a QR Reader on your smart phone to learn more about Forest River.



A Berkshire Hathaway company.

All specifications contained herein are based on the latest product information at time of printing. Forest River reserves the right to make changes in colors, materials, equipment and specifications at any time without notice and assumes no responsibility for any errors in this brochure. Litho. U.S.A. W: 2014.04.03